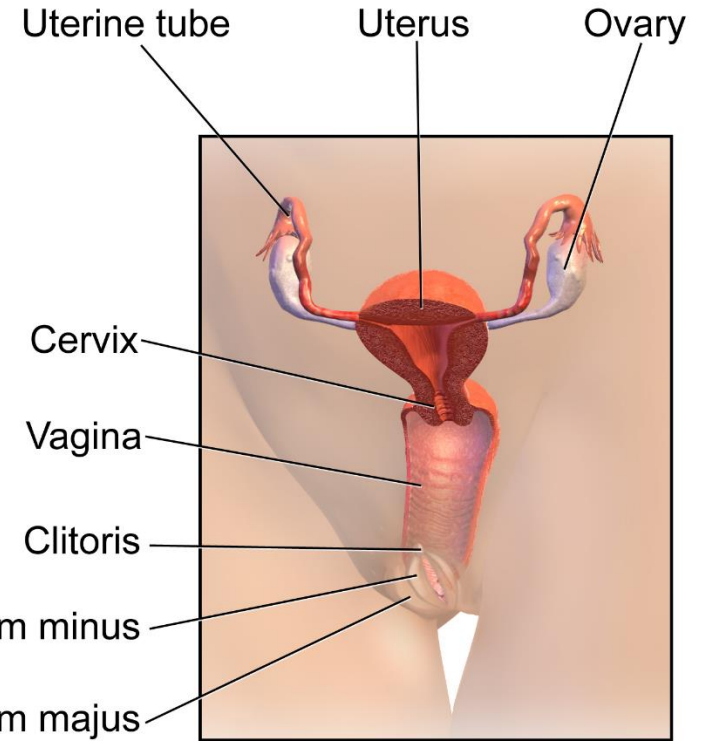
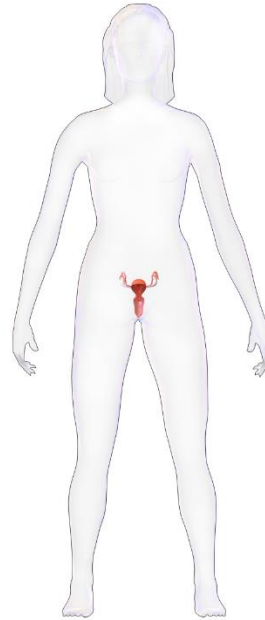


Female Genital System



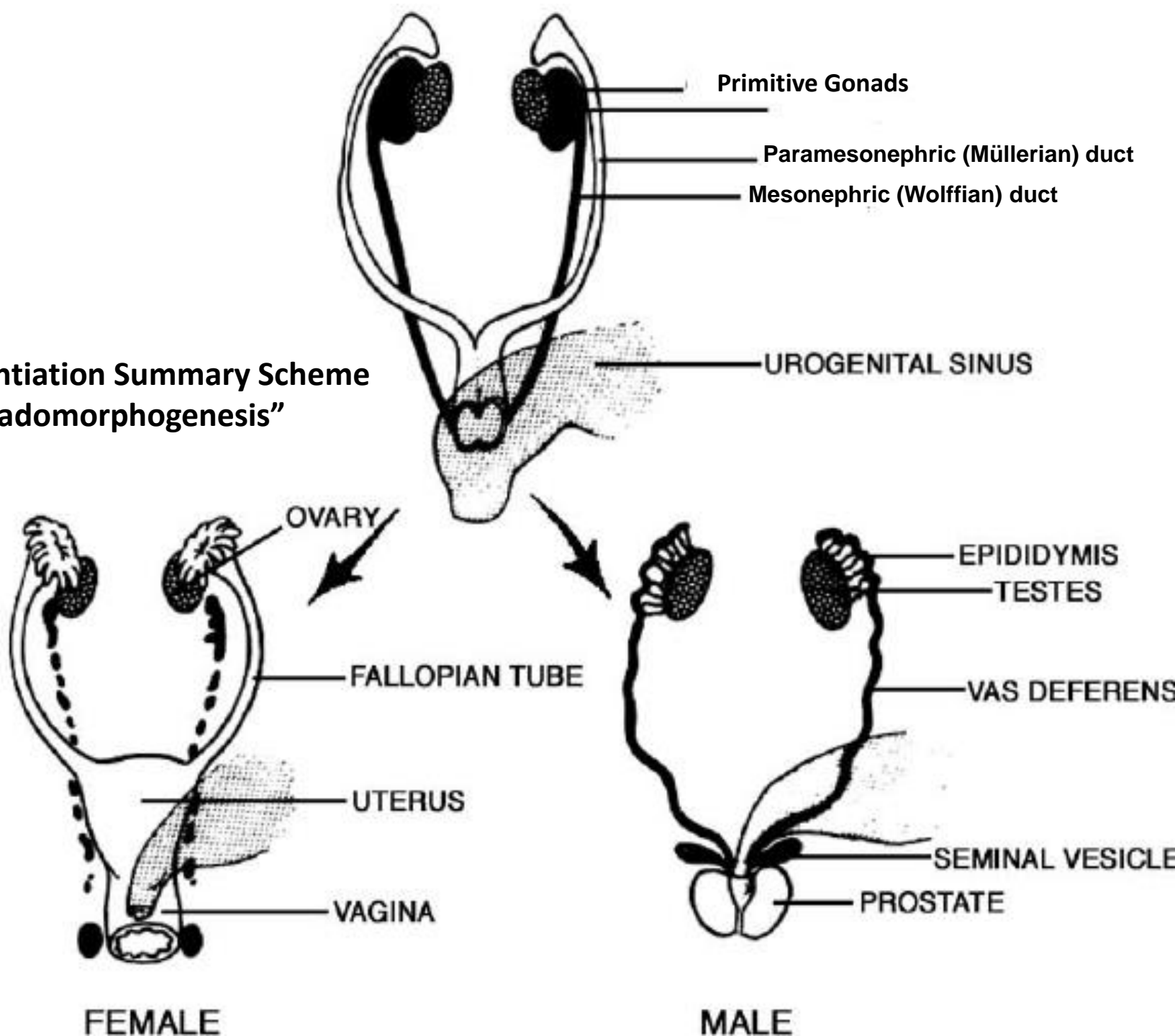
Department of Anatomy
Second Faculty of Medicine
Charles University

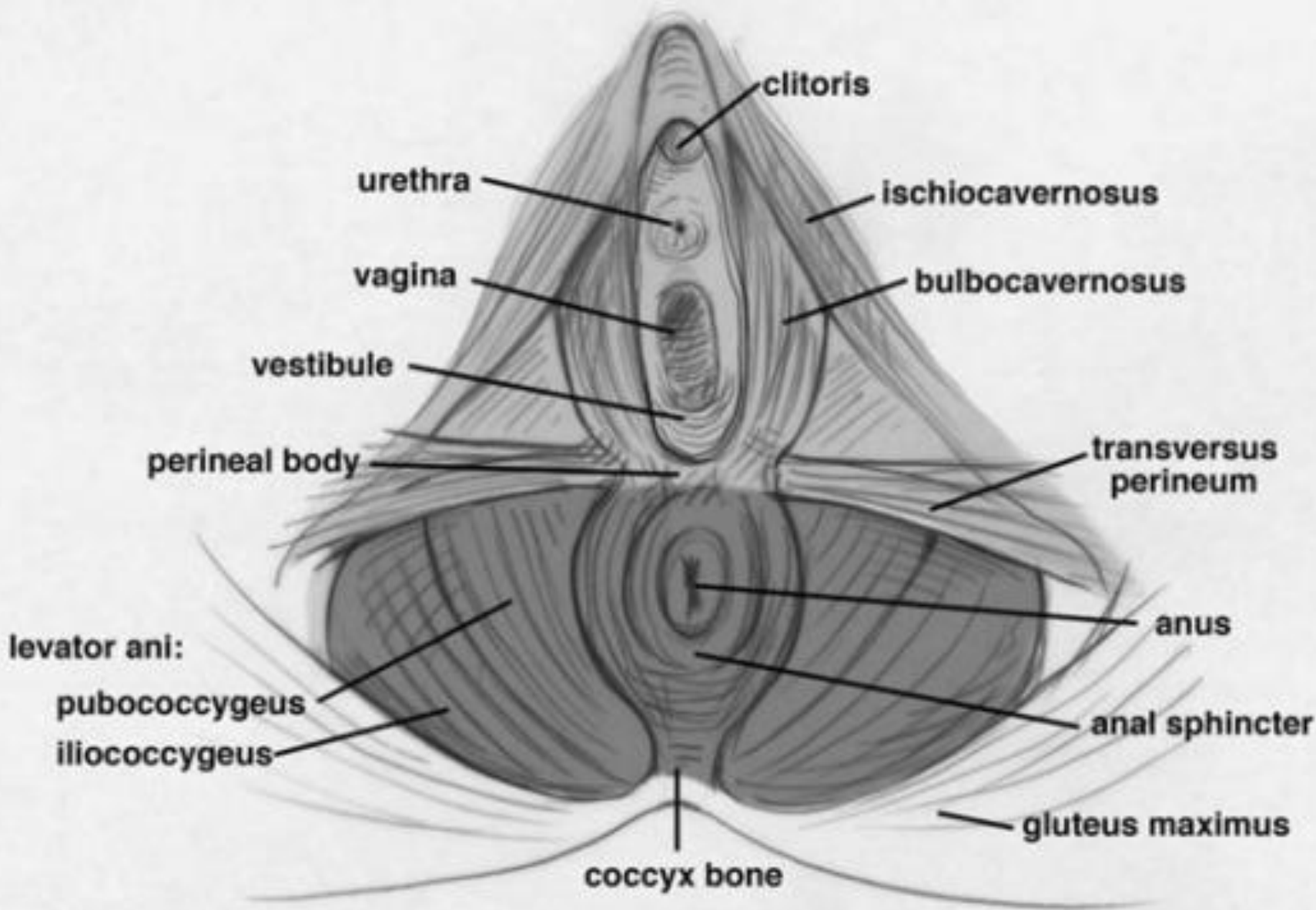


MUDr. Azzat Al-Redouan

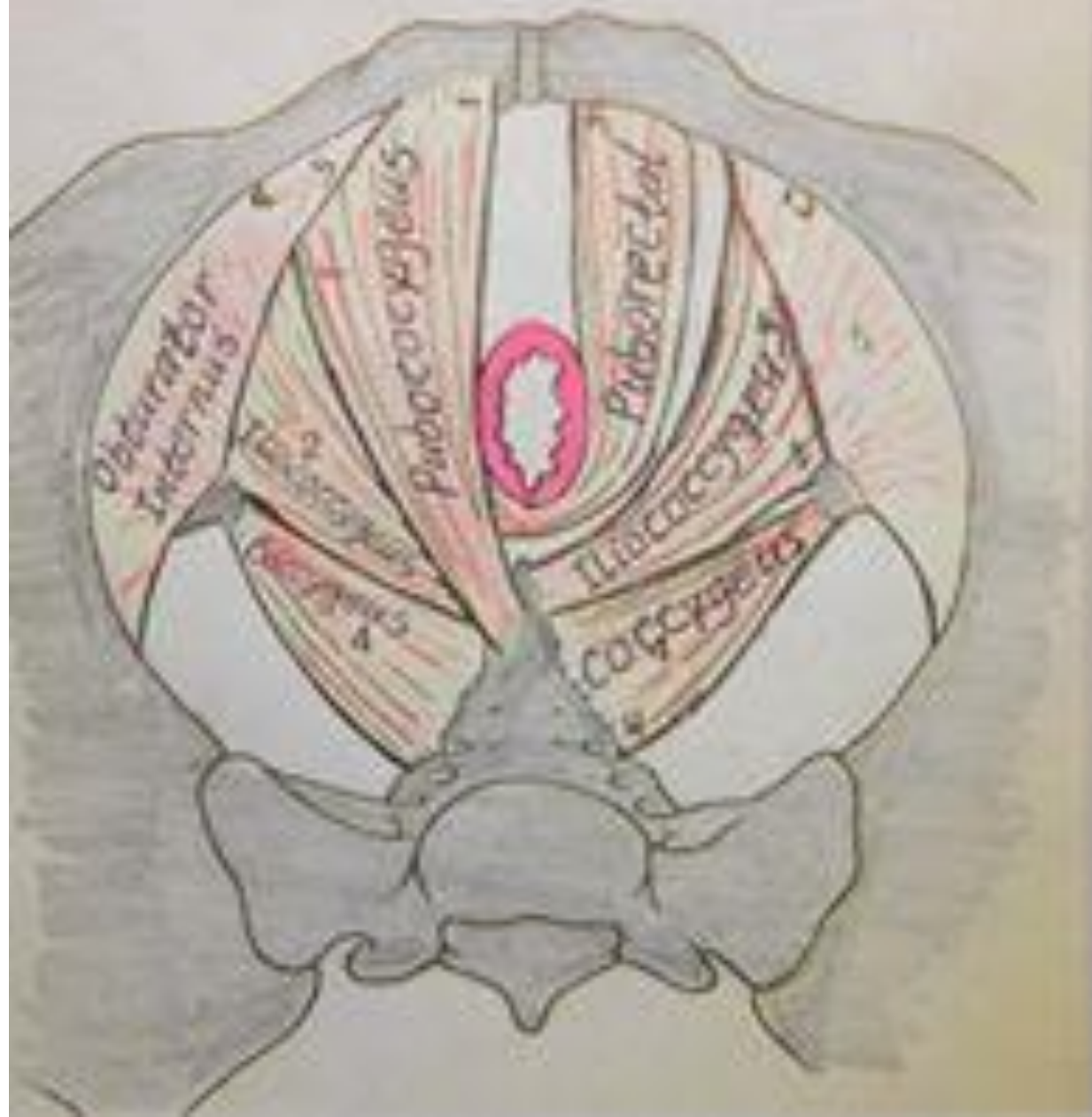
The Female Reproductive System

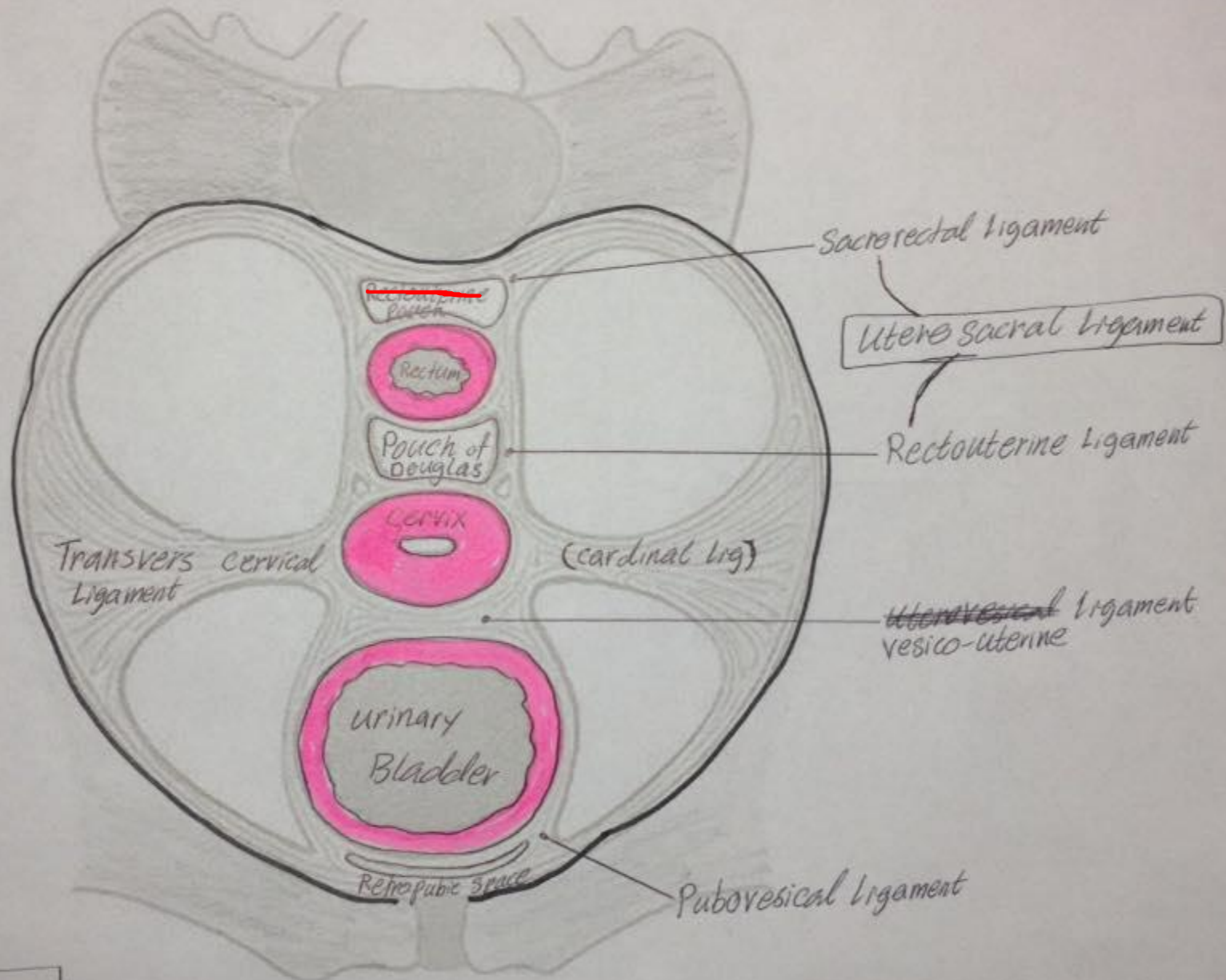
**Sex Differentiation Summary Scheme
"Gonadomorphogenesis"**



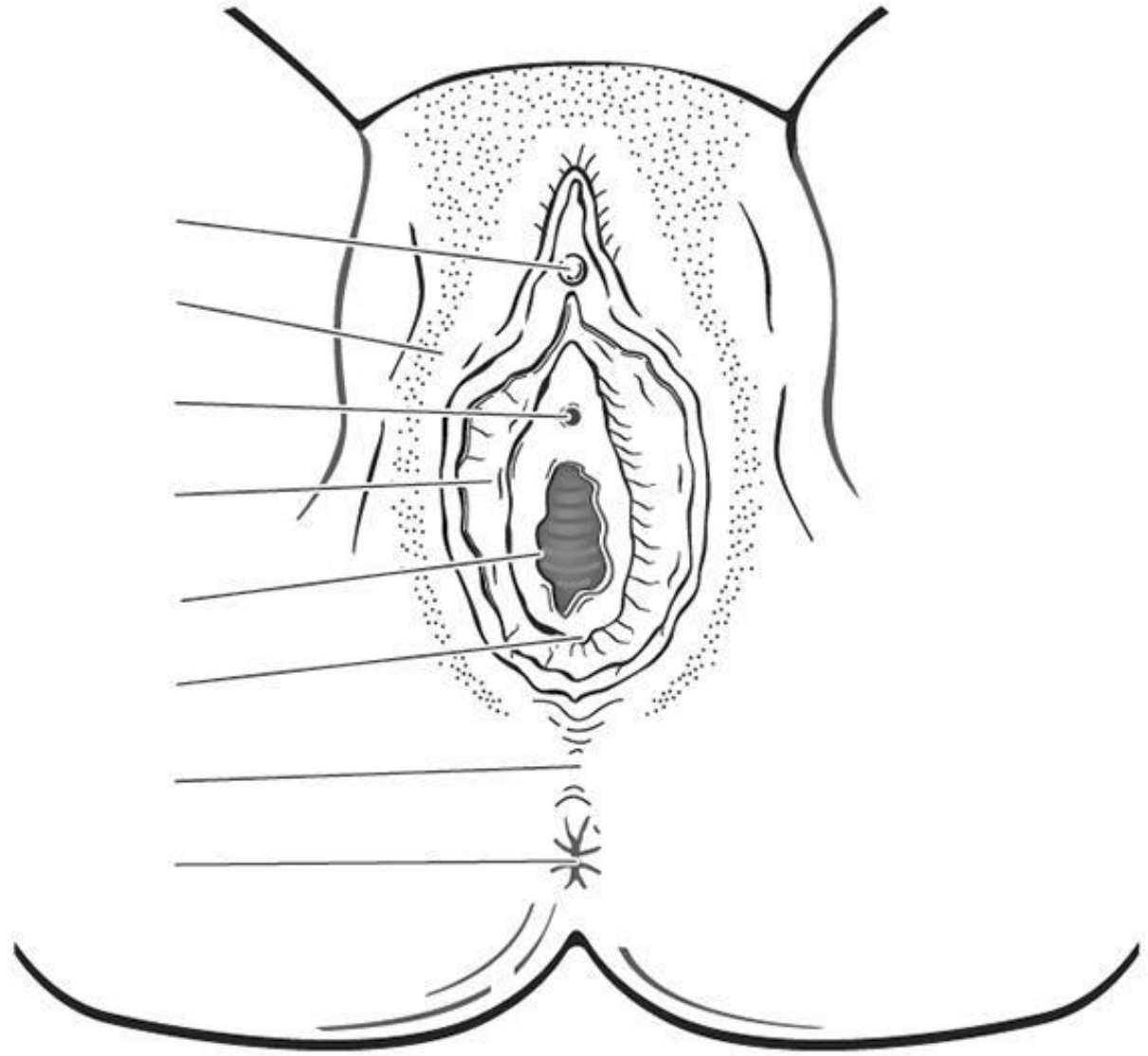


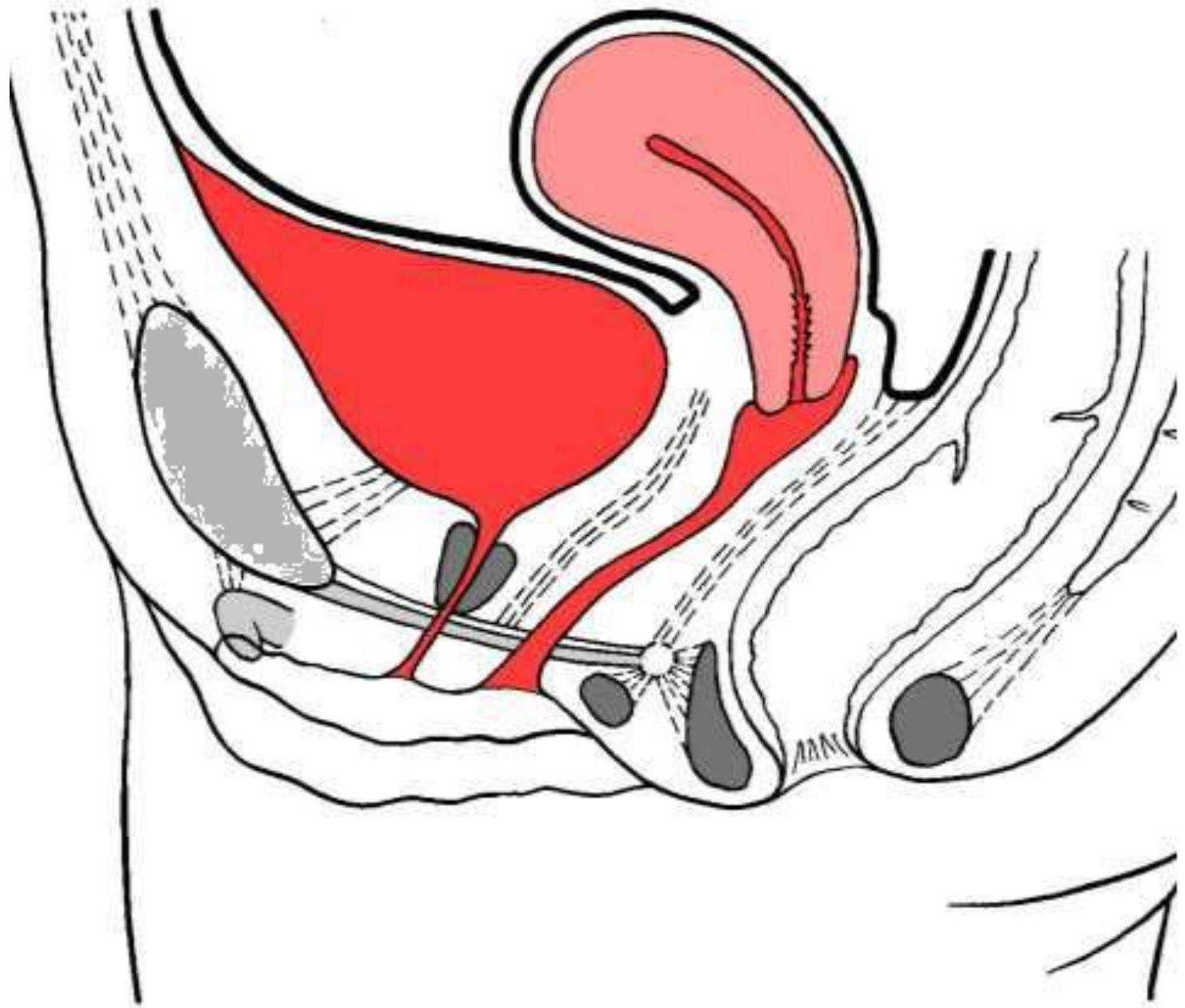
Levator ani (1,2,3) and coccygeus (4)





Parametrium





Displaced Positions of the Uterus:



Anteflexed



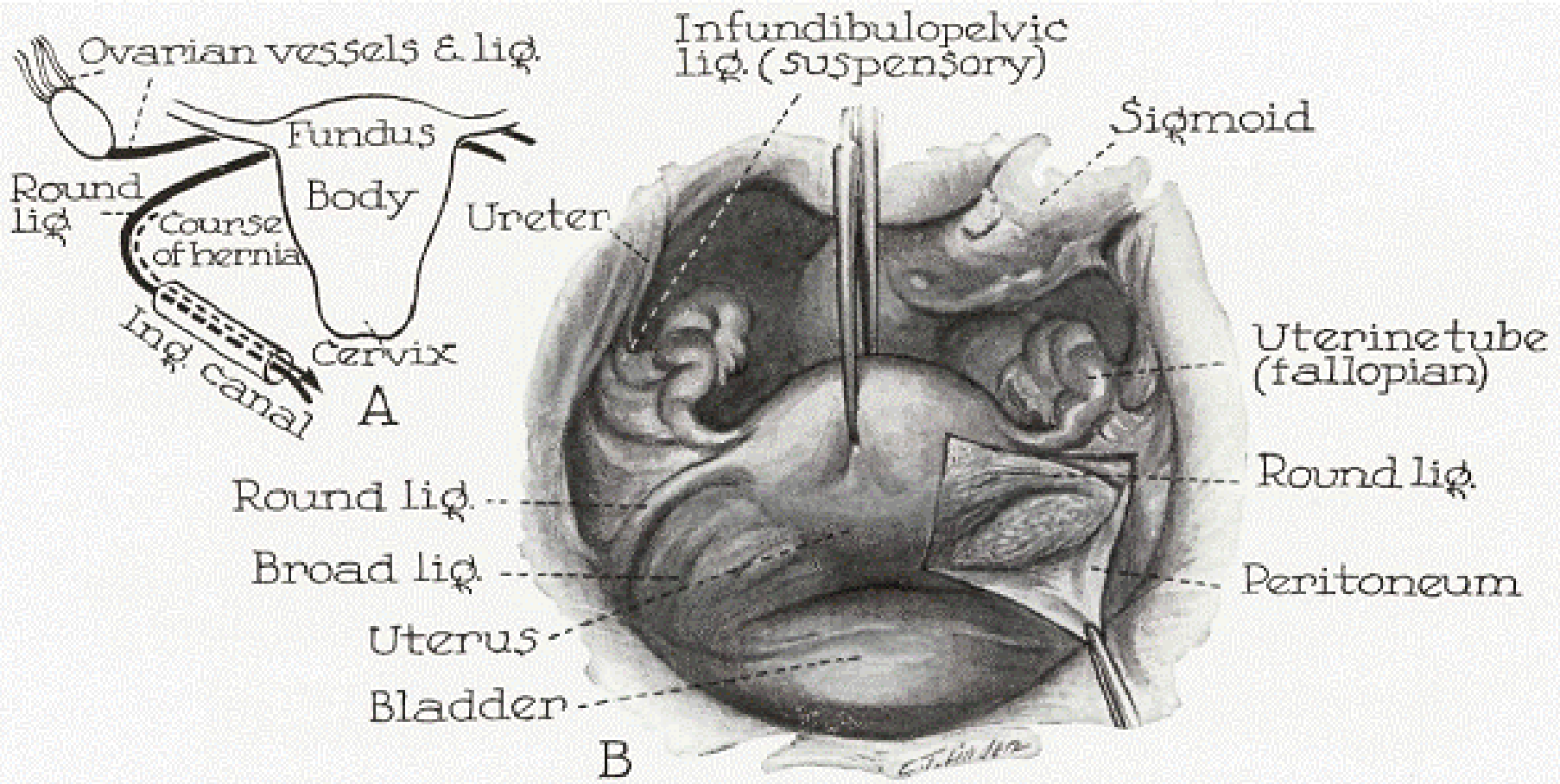
Retroflexed



Retrocessed



Retroverted





Gen THI
S MB

Suprapubic View

Ovarian
Ligament

Bladder

Ovarian
Ligament

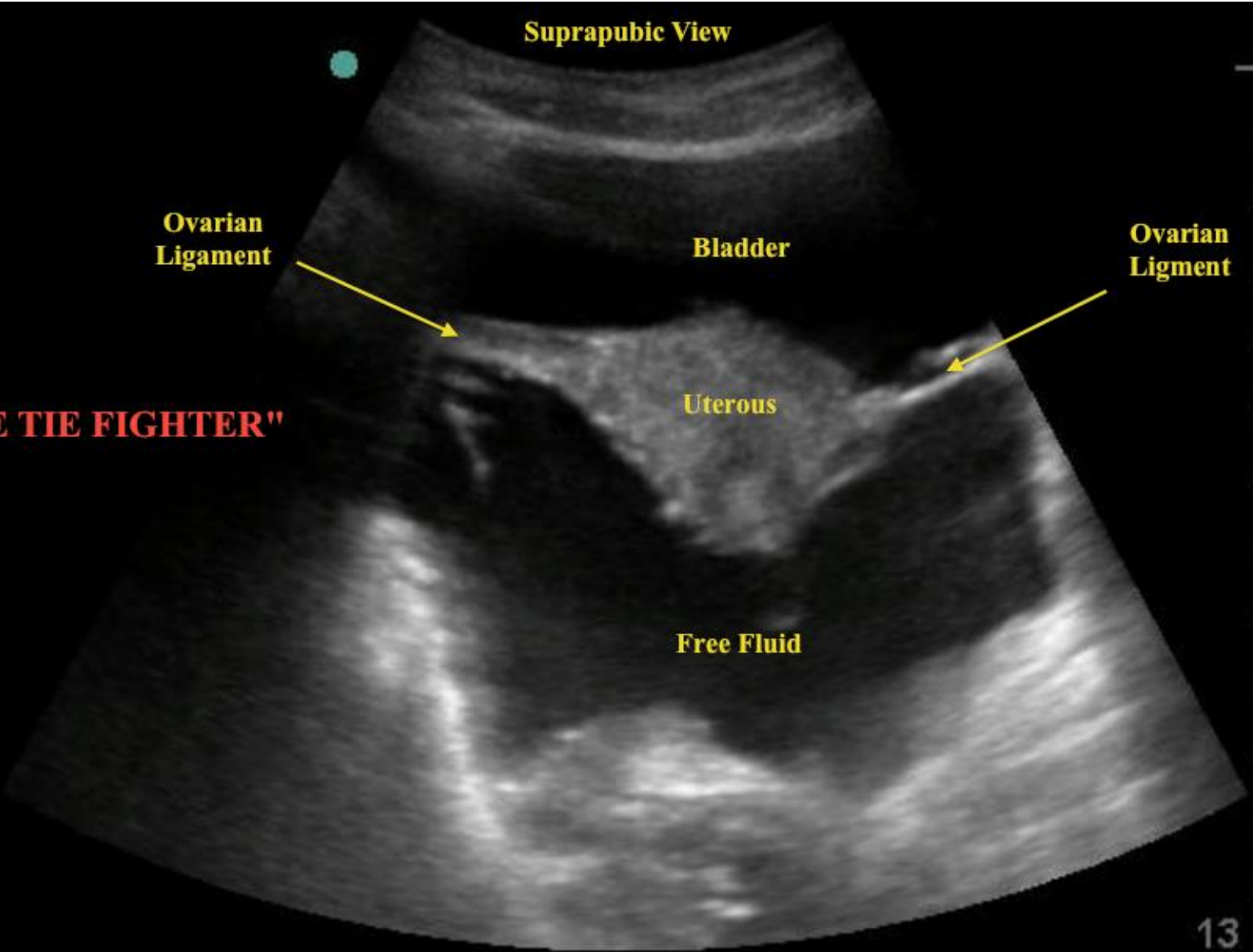
Uterous

"THE TIE FIGHTER"

Free Fluid

Abd
- C60
98%
MI
1.0
TIS
0.1
33
A
B

Cine



Gen THI
S MB

Suprapubic View

Abd
- C60



98%

MI

1.0

TIS

0.1



Free Fluid

Probe not making good
contact with skin or lack of gel
in this area of probe

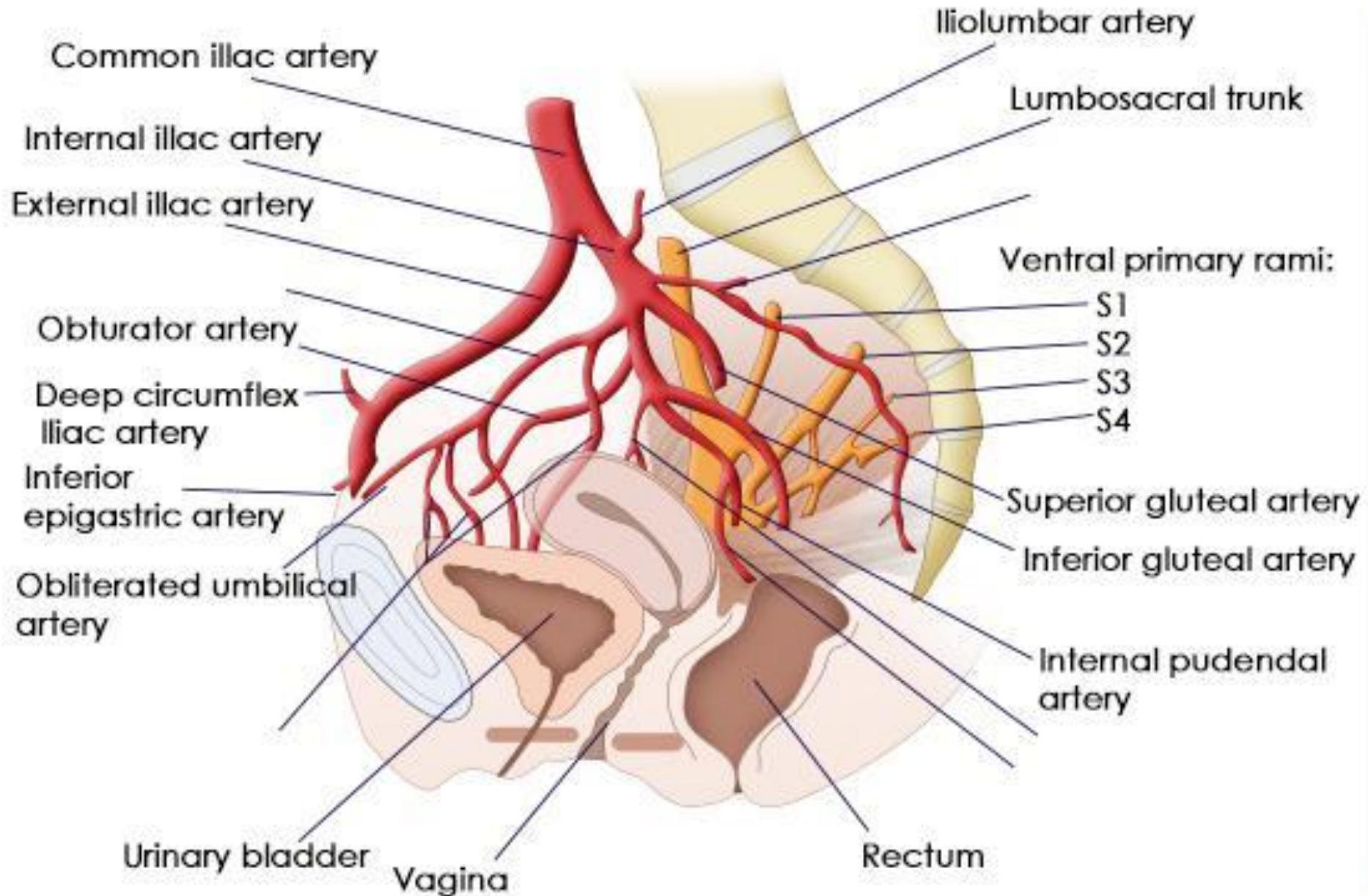
Uterous

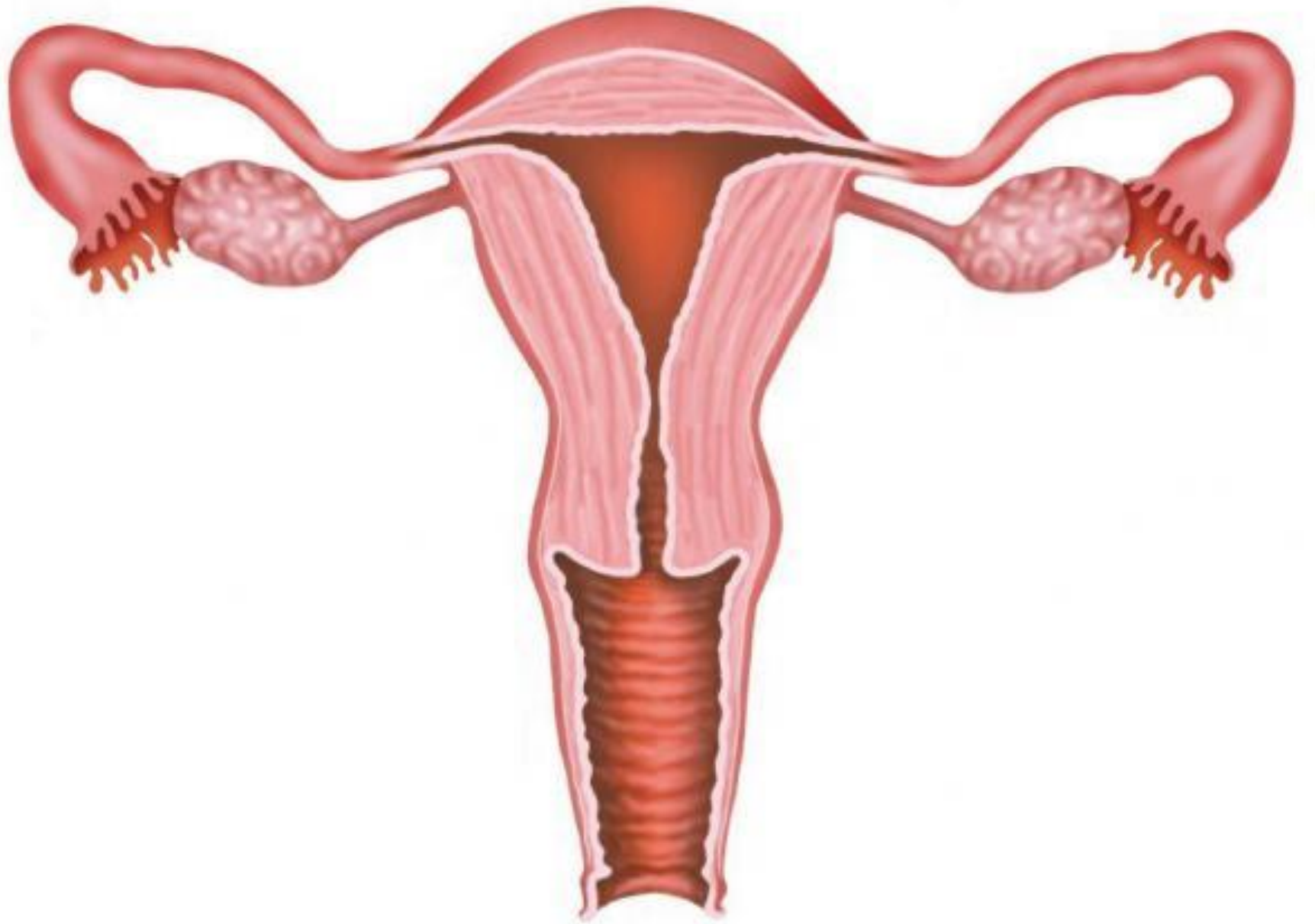


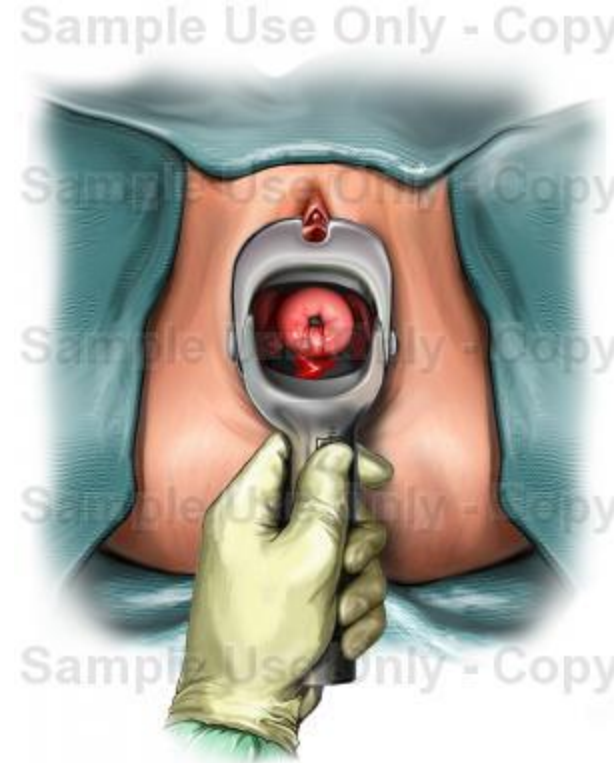
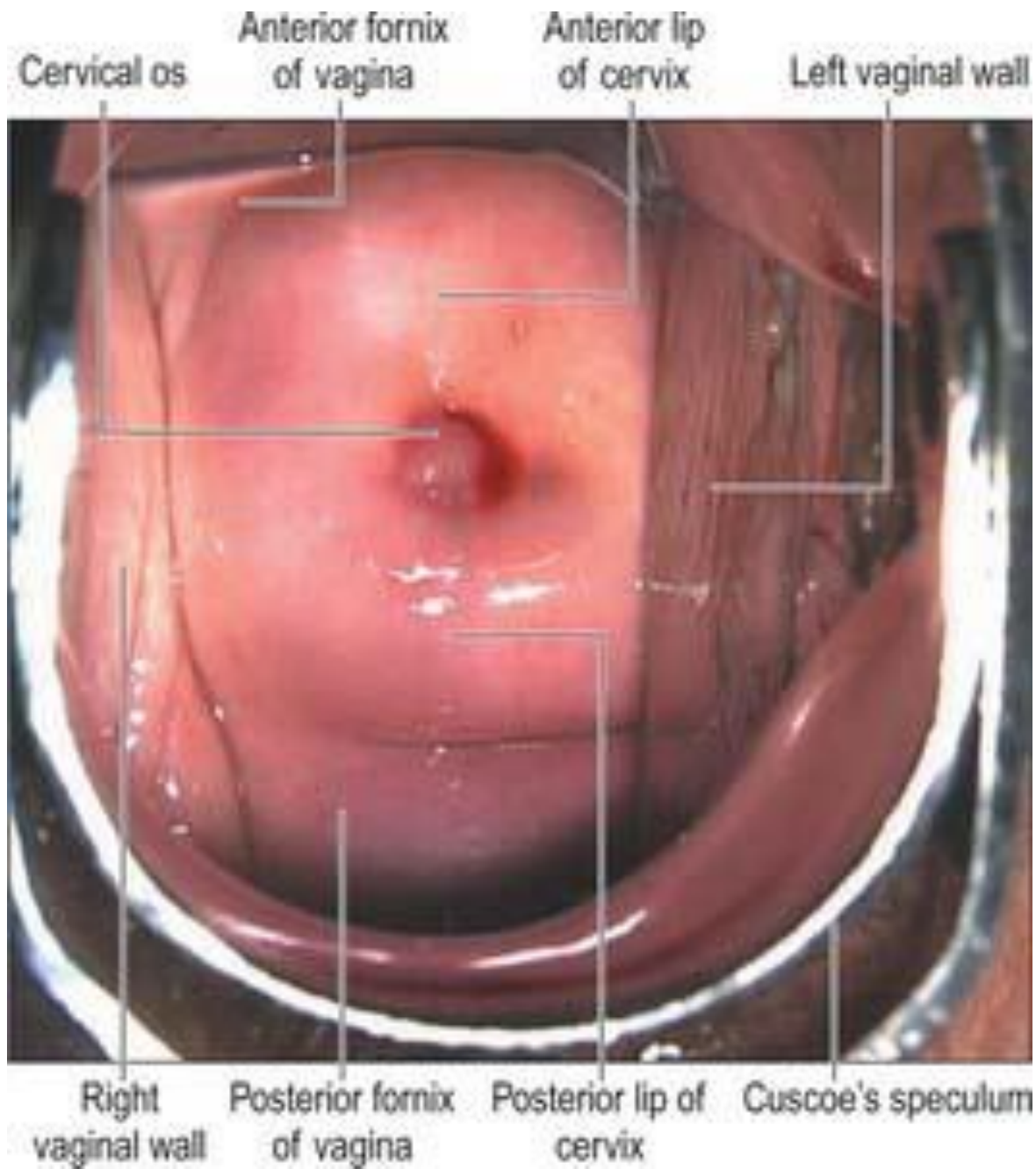
Free Fluid

* Denotes the small part of the bladder
that is visible in this view

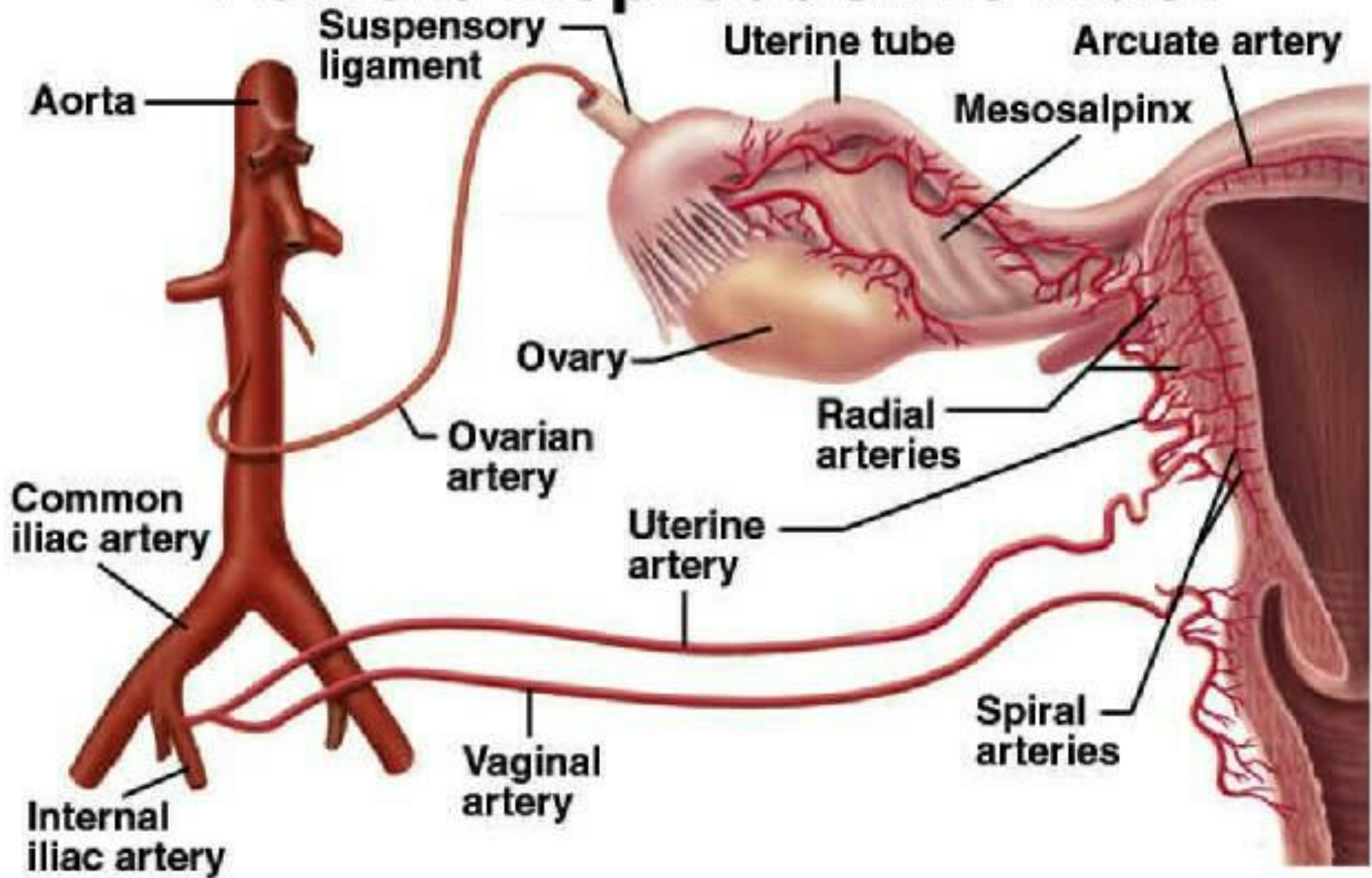
COMMON ILIAC ARTERY AND ITS BRANCHES (FEMALE)

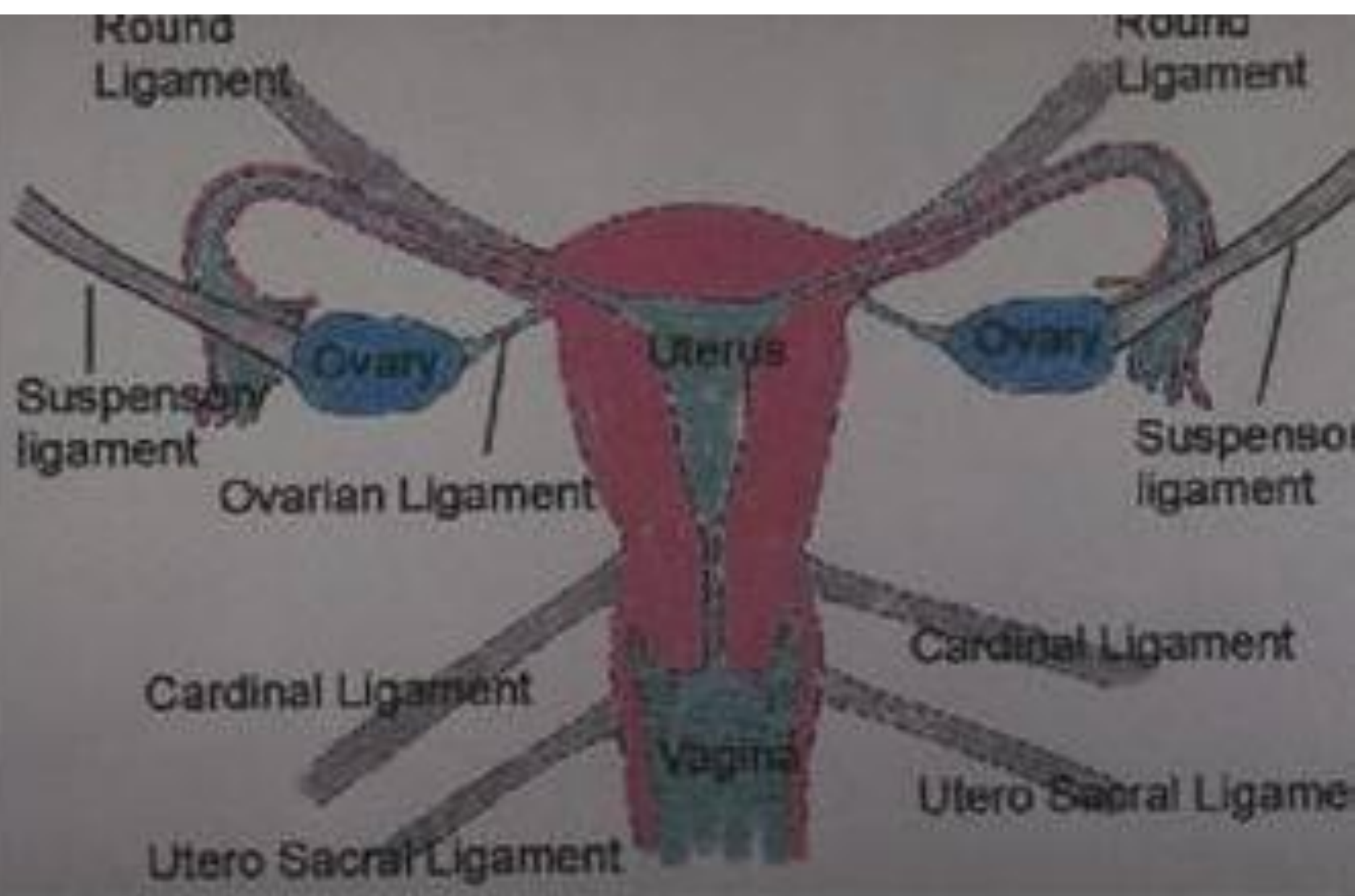


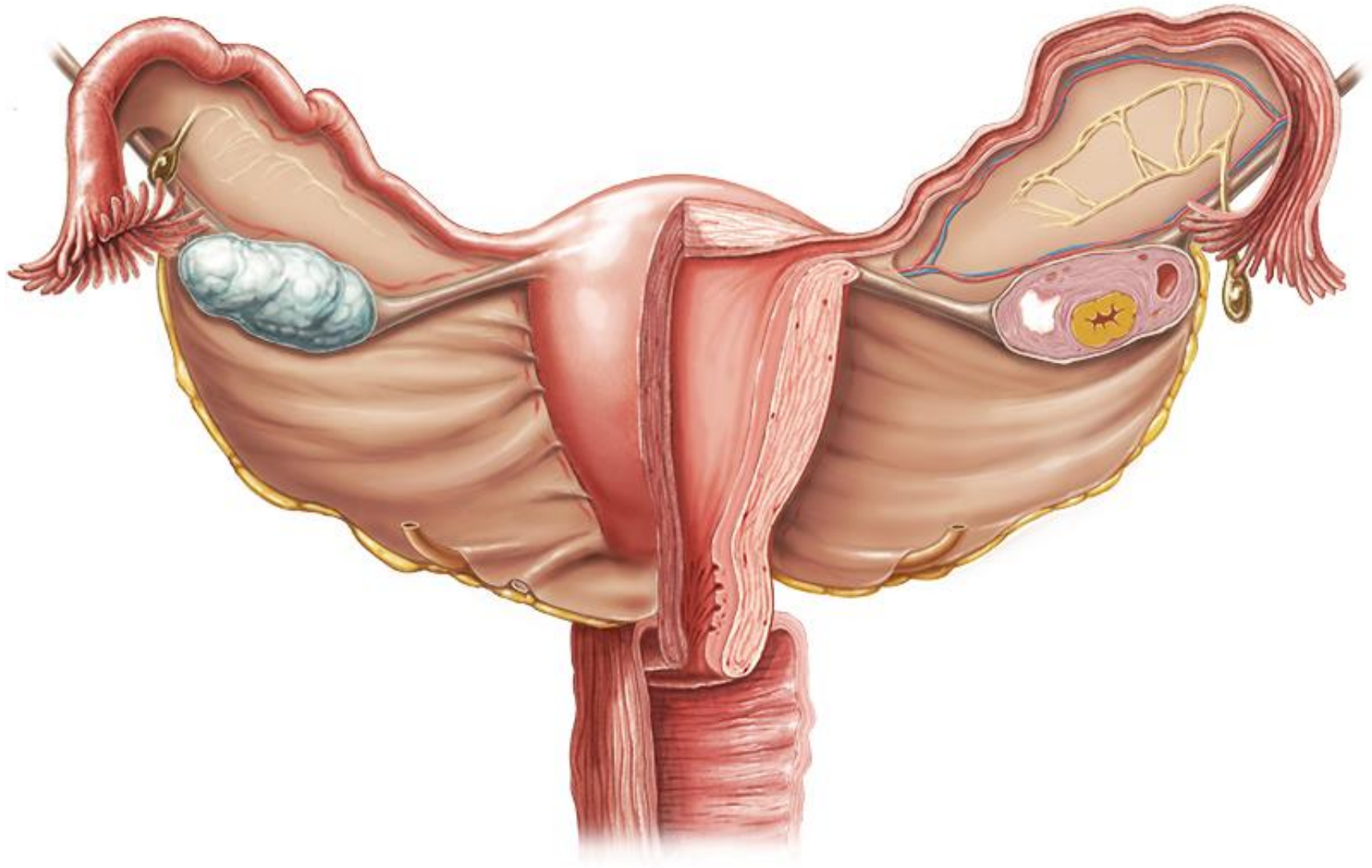


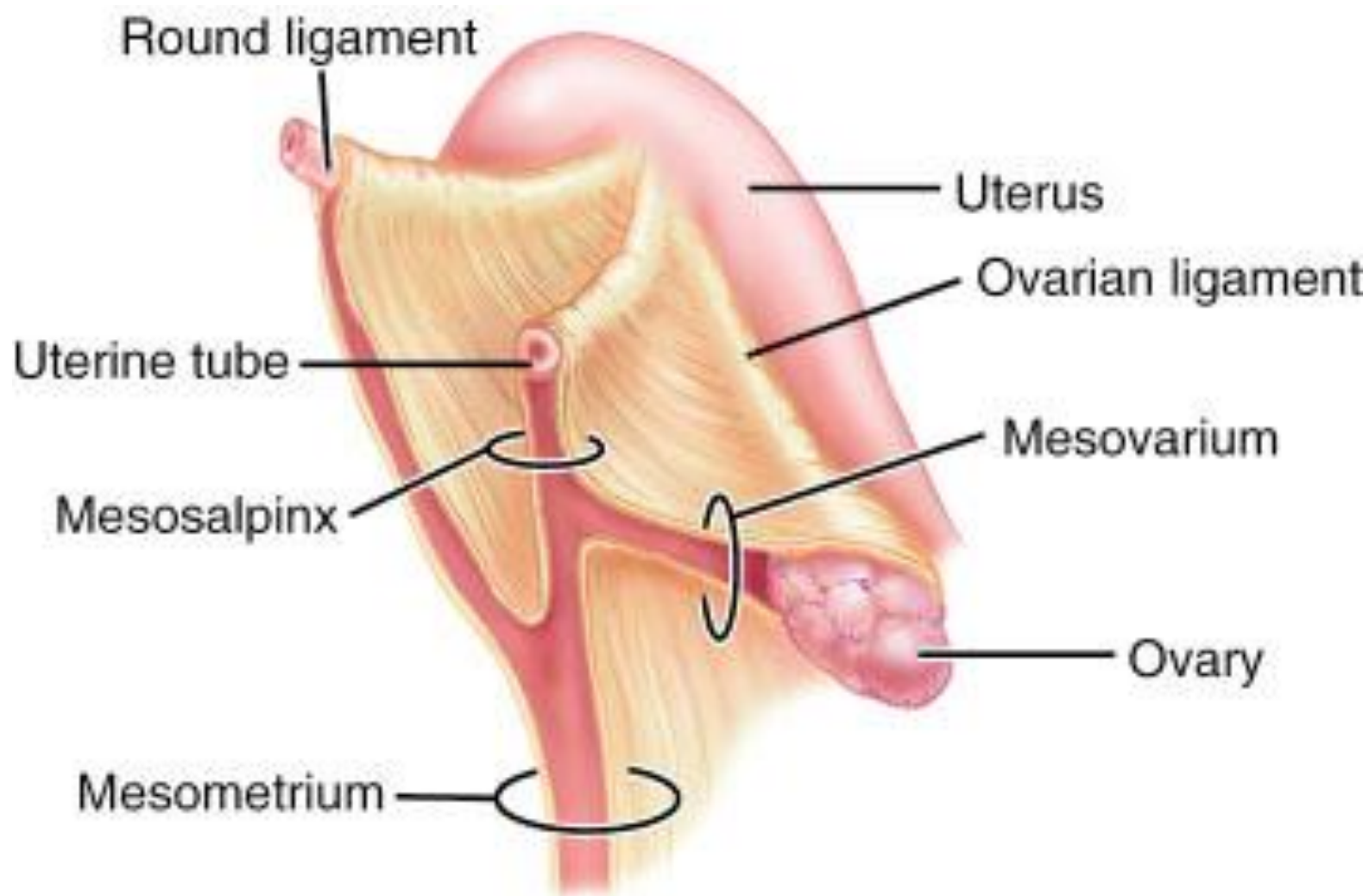


Blood Supply to Female Reproductive Tract



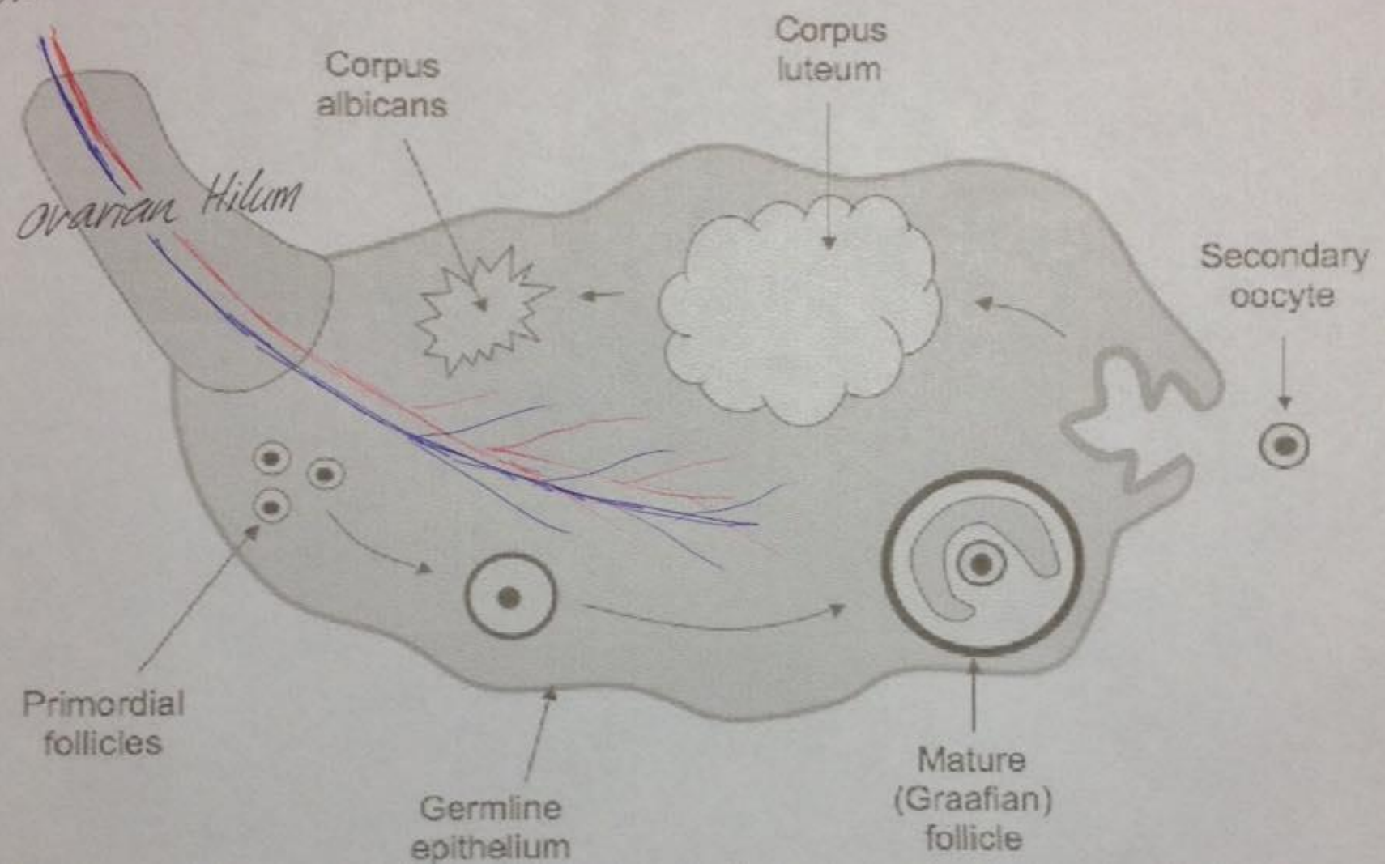


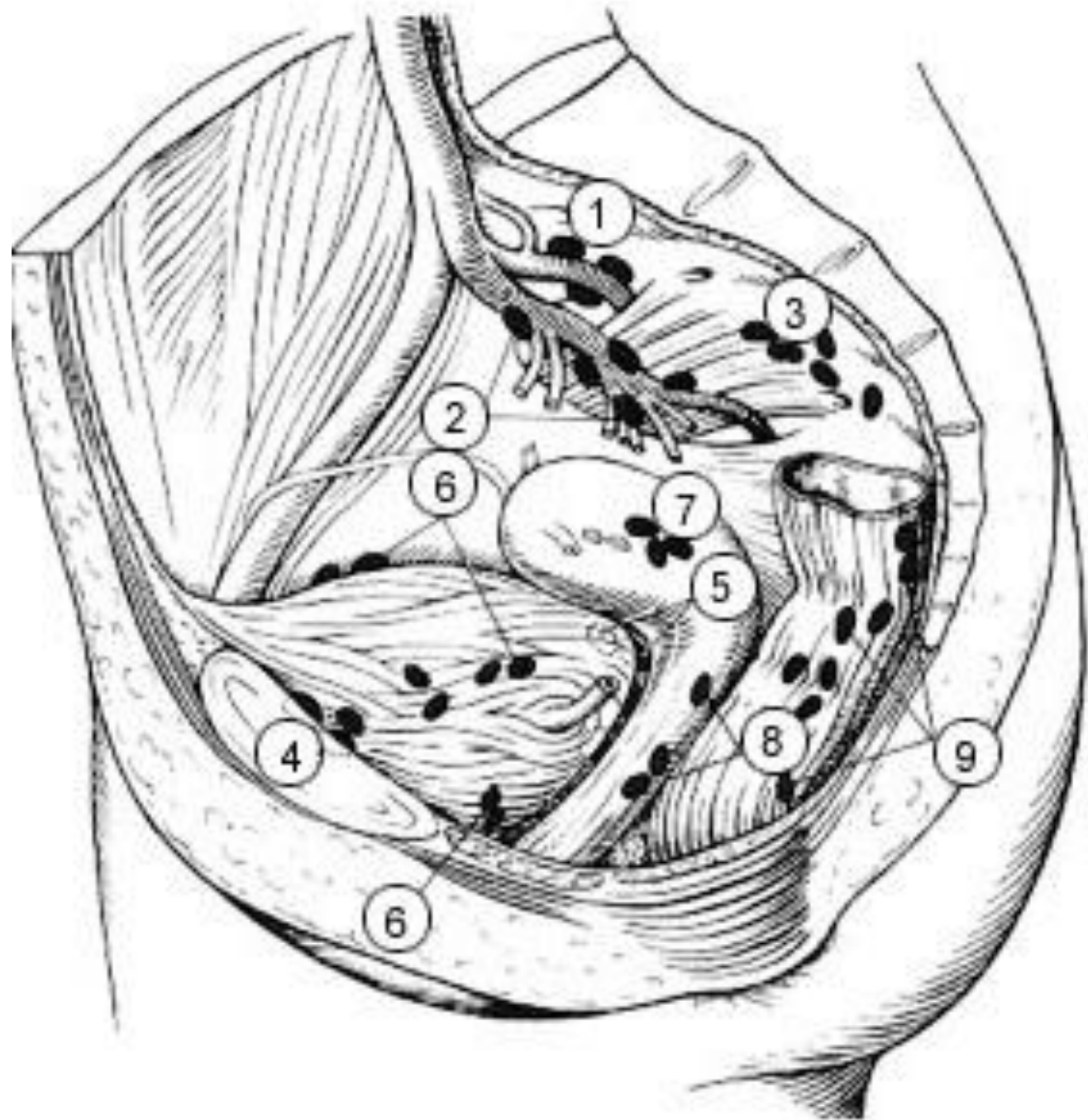


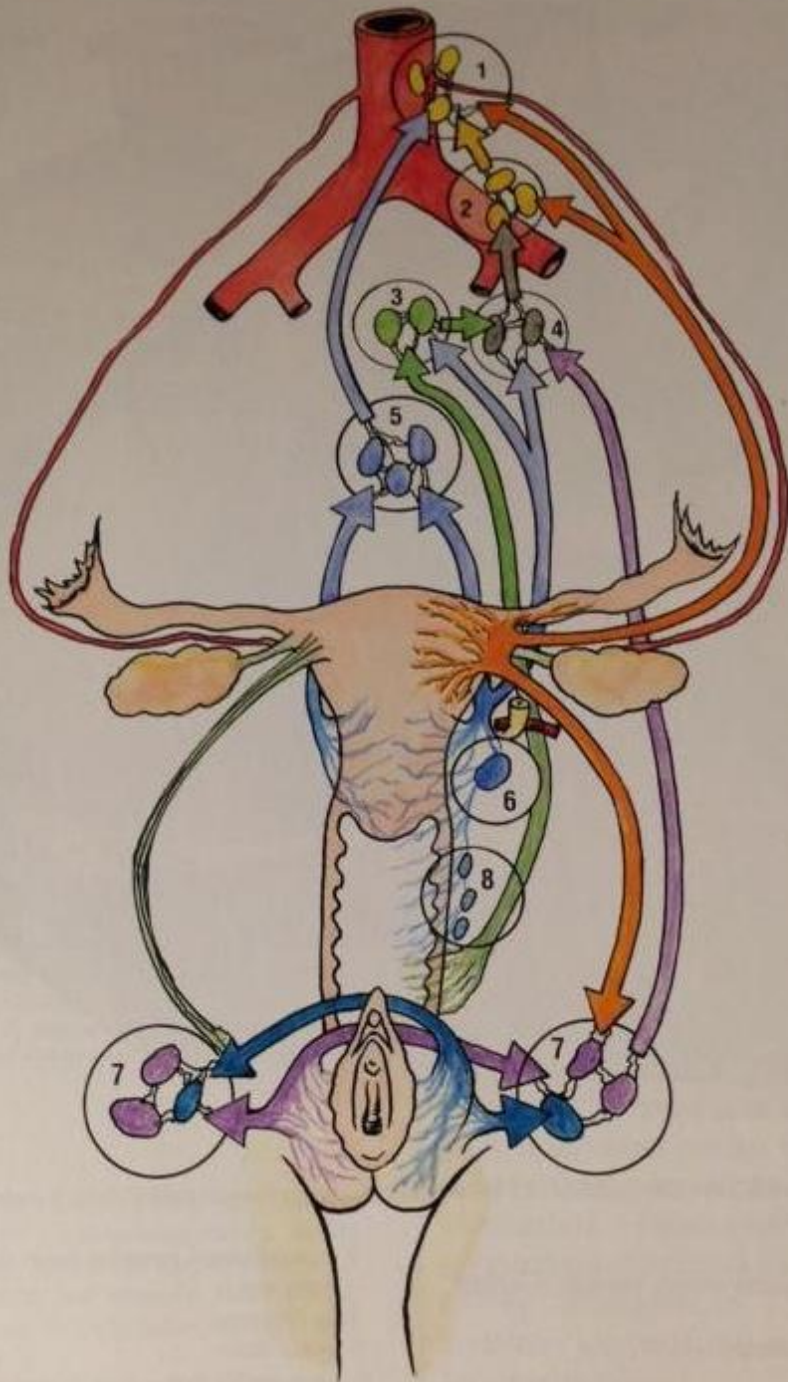


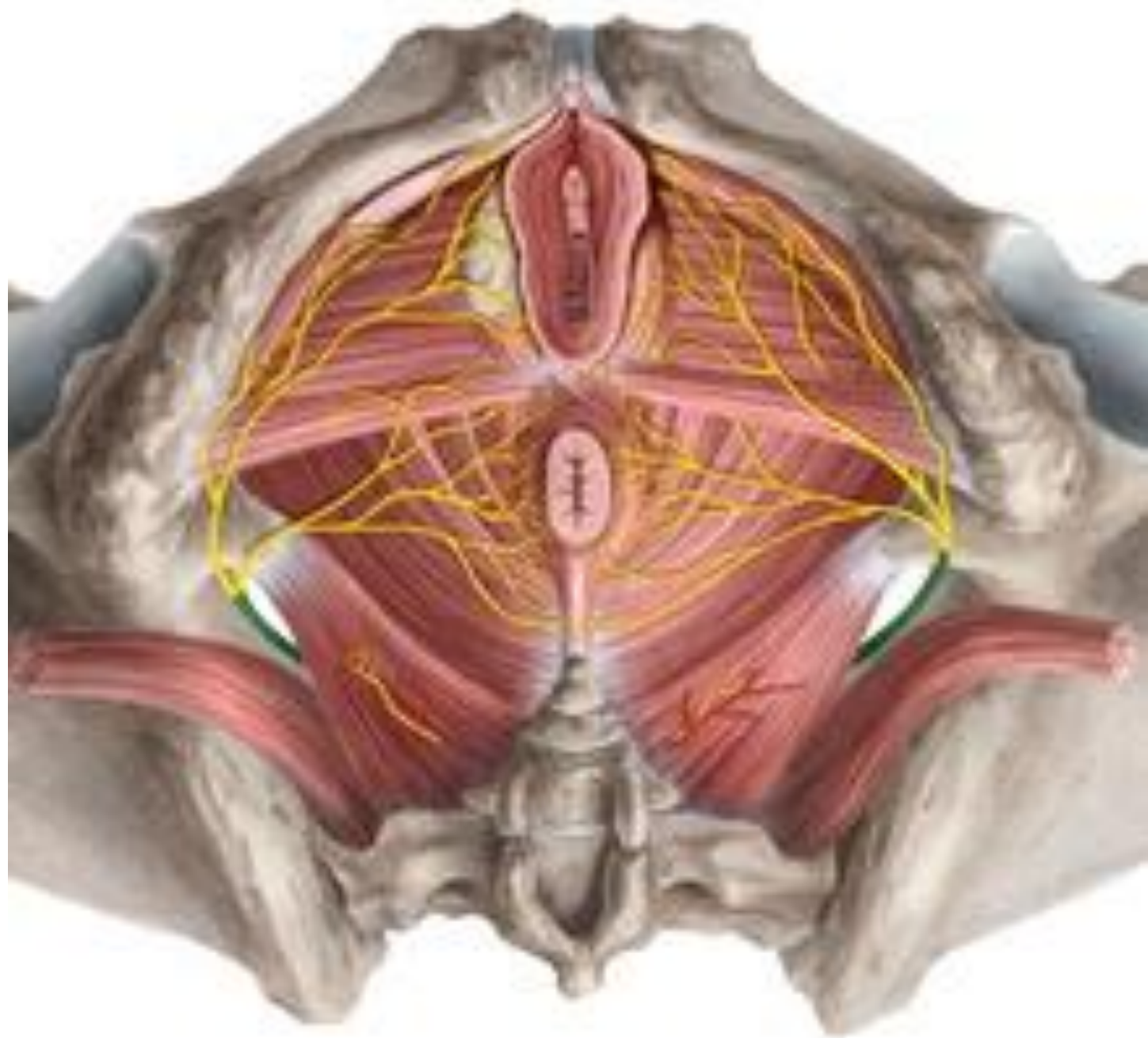
Ovary Cross Section

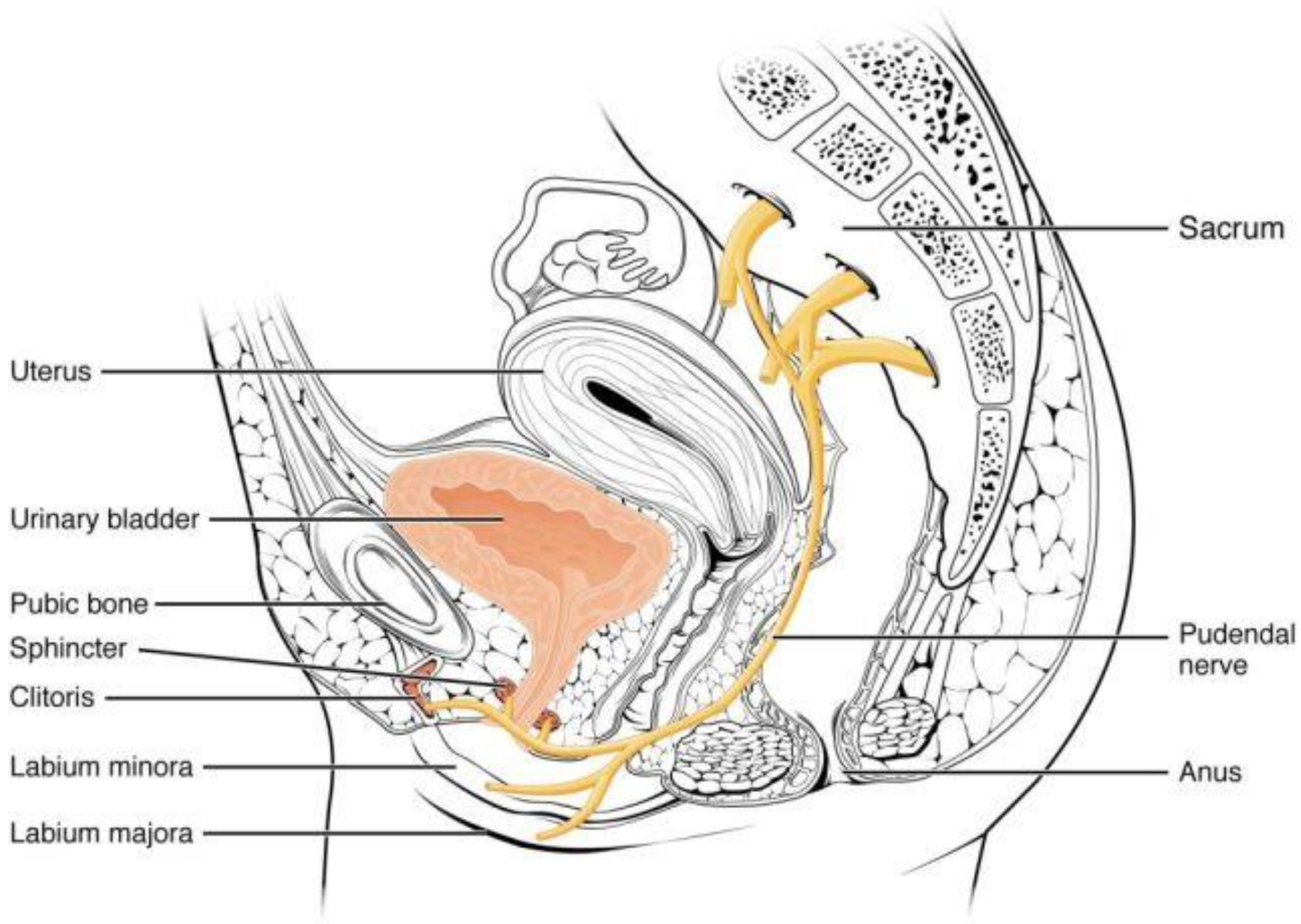
Ovarian v.
Ovarian a.

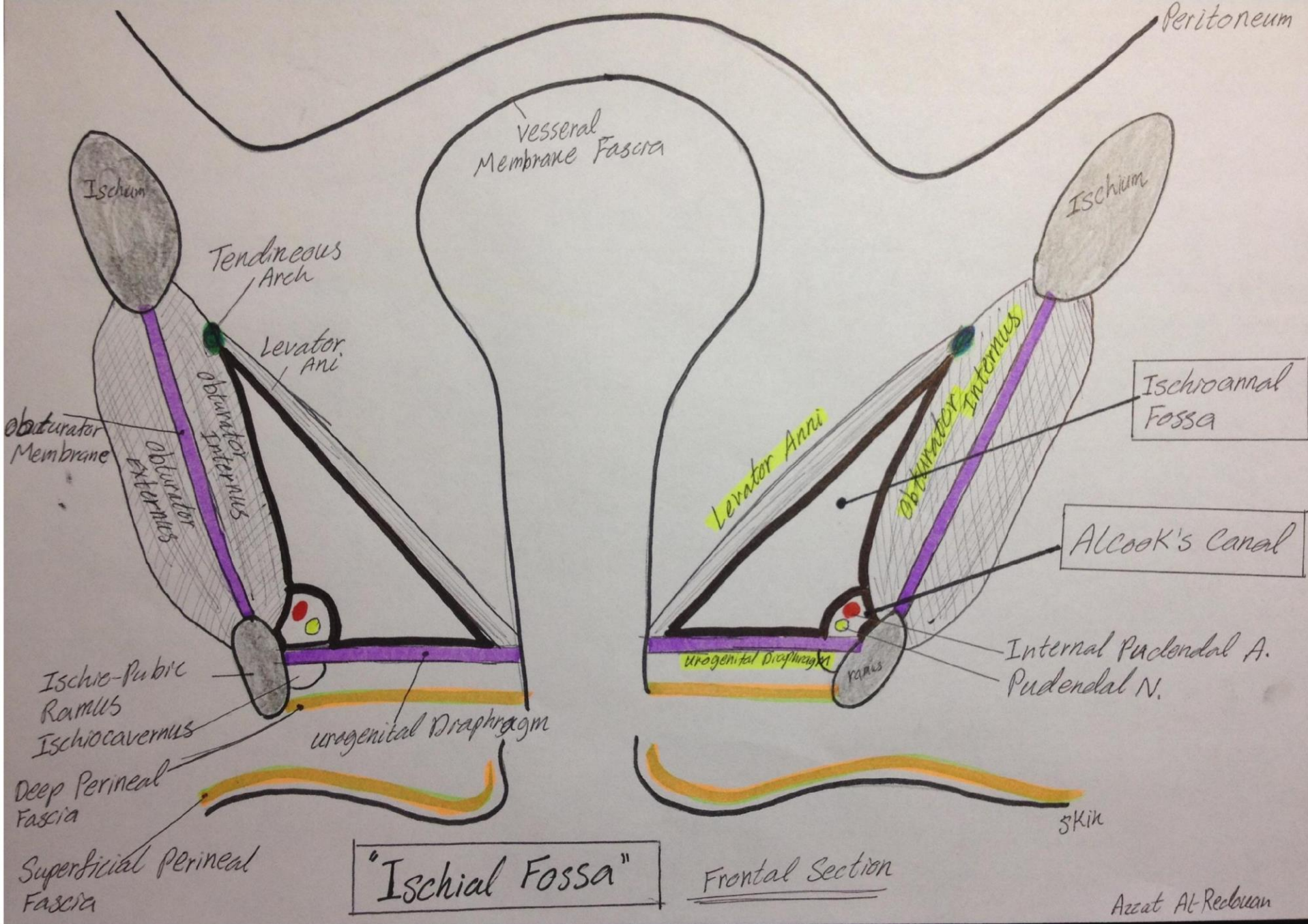












"Ischial Fossa"

Frontal Section

Azzat Al-Reebuan

