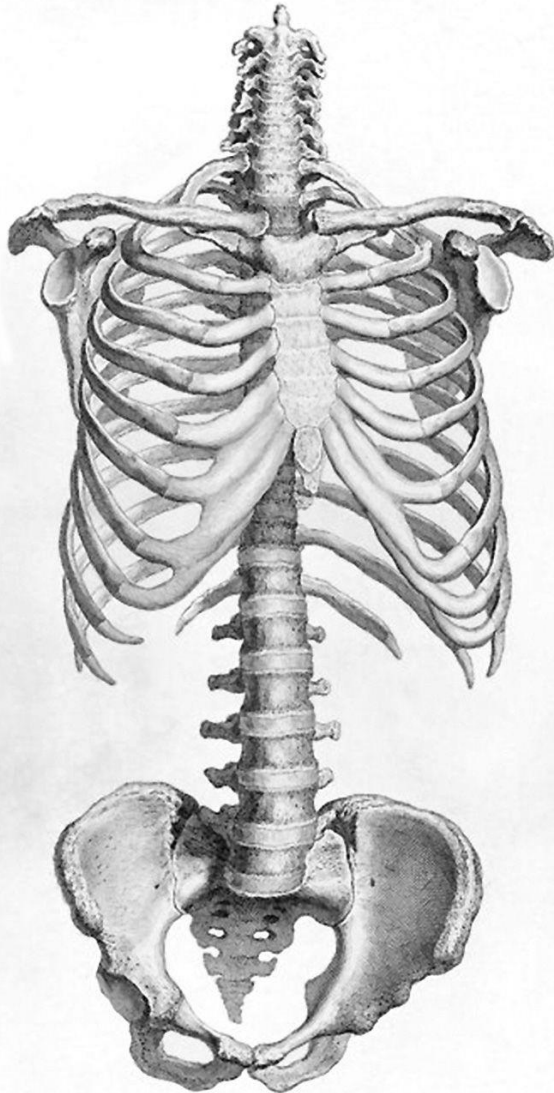


Axial Skeleton & Joints

XIX



Department of Anatomy
Second Faculty of Medicine
Charles University

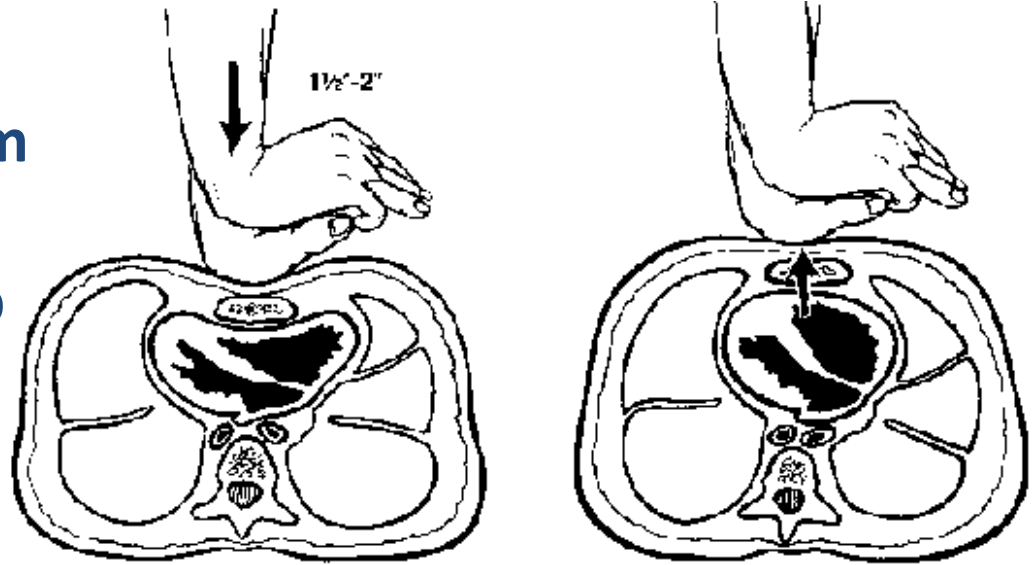
MUDr. Azzat Al-Redouan

Skeleton Demonstration

**** Palpate the whole spine on a colleague of yours or on your pet!*

What is the concept of CPR?

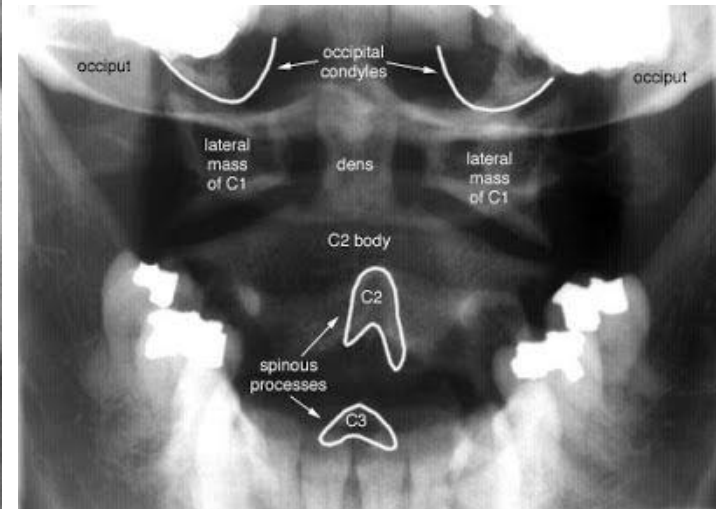
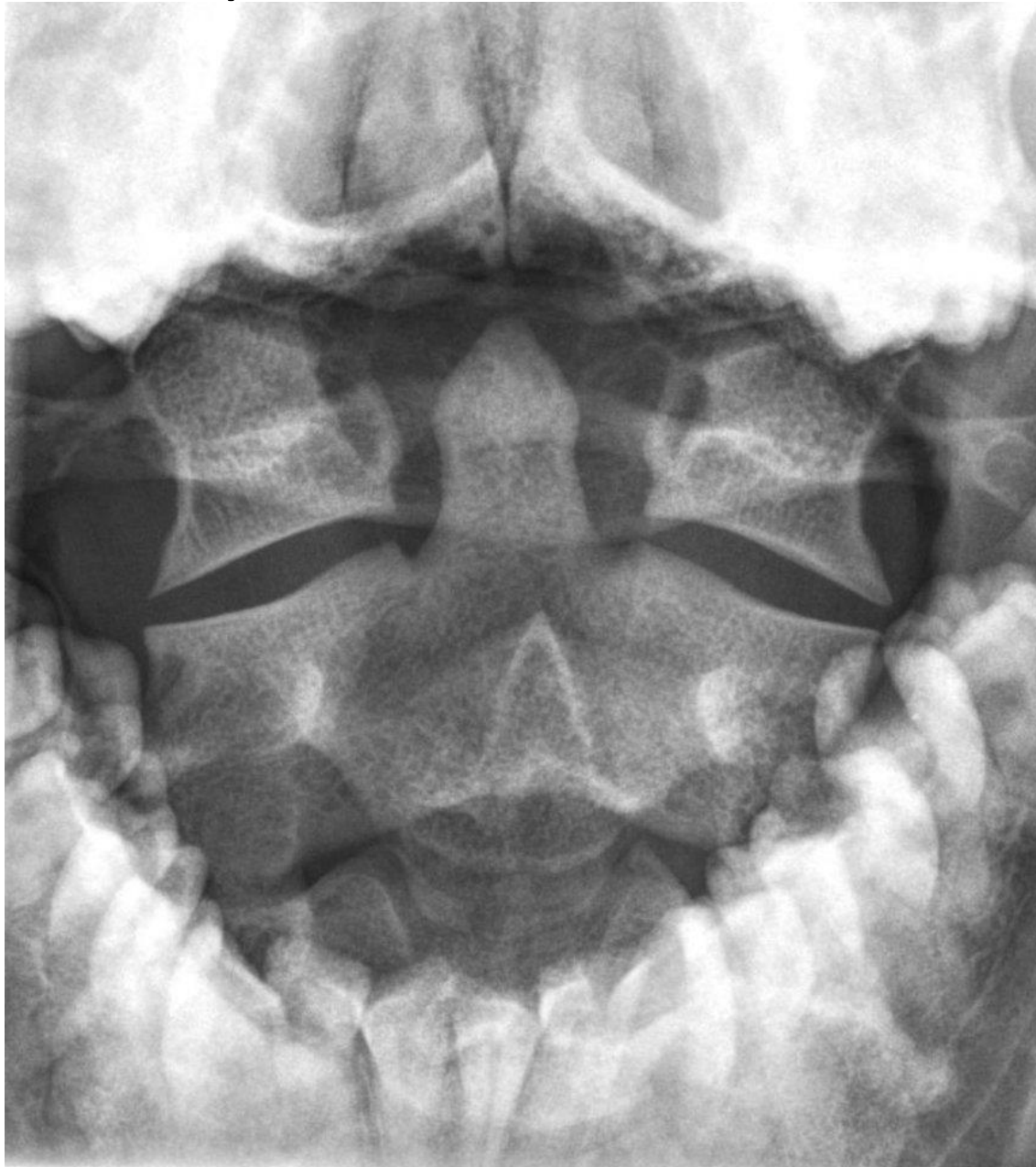
Sequentially squeezing the heart between the **sternum** and **thoracic vertebrae**
→ generate artificial pump



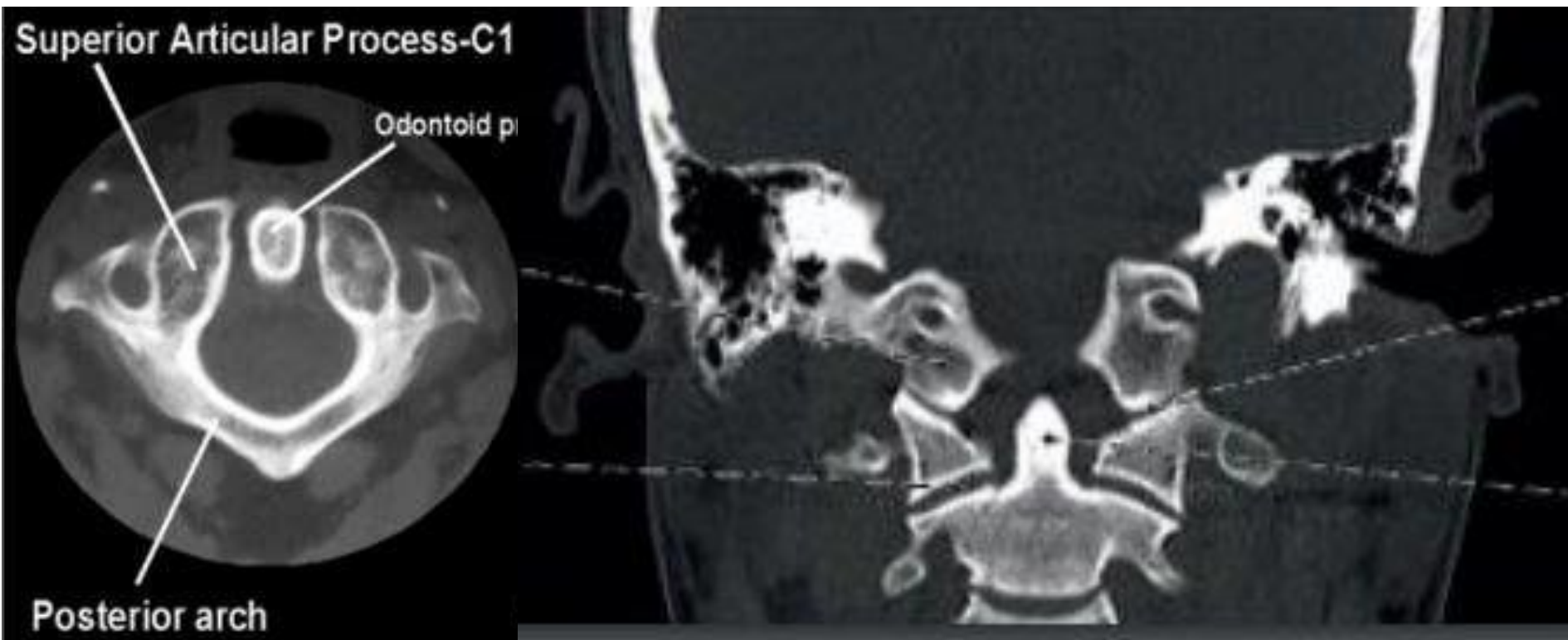
Axial Skeleton X-Rays



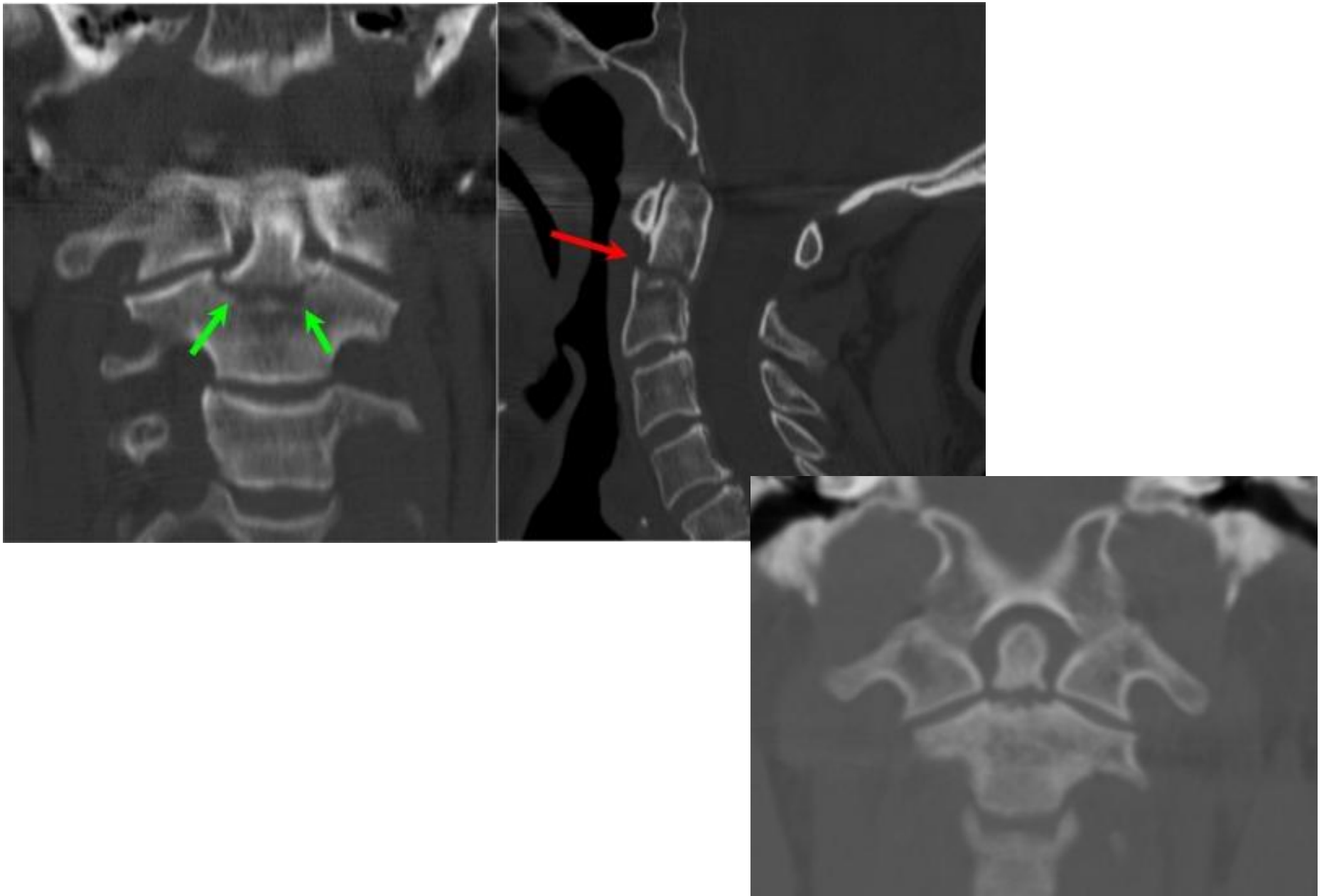
Open Mouth Odontoid Radiograph (Xray)



Axial Skeleton CT



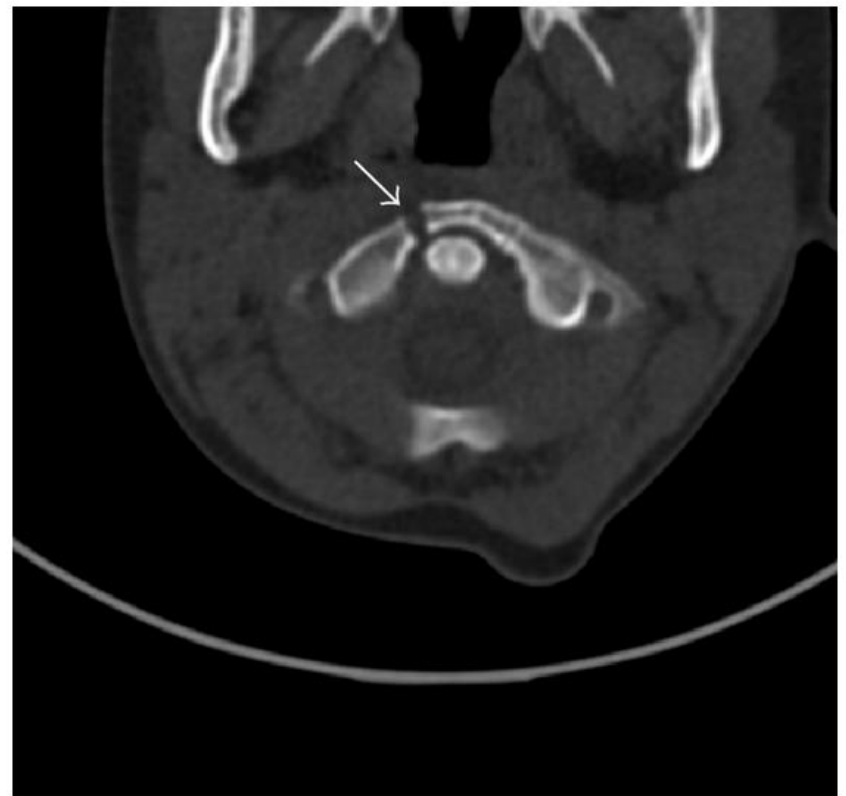
Odontoid Fractures



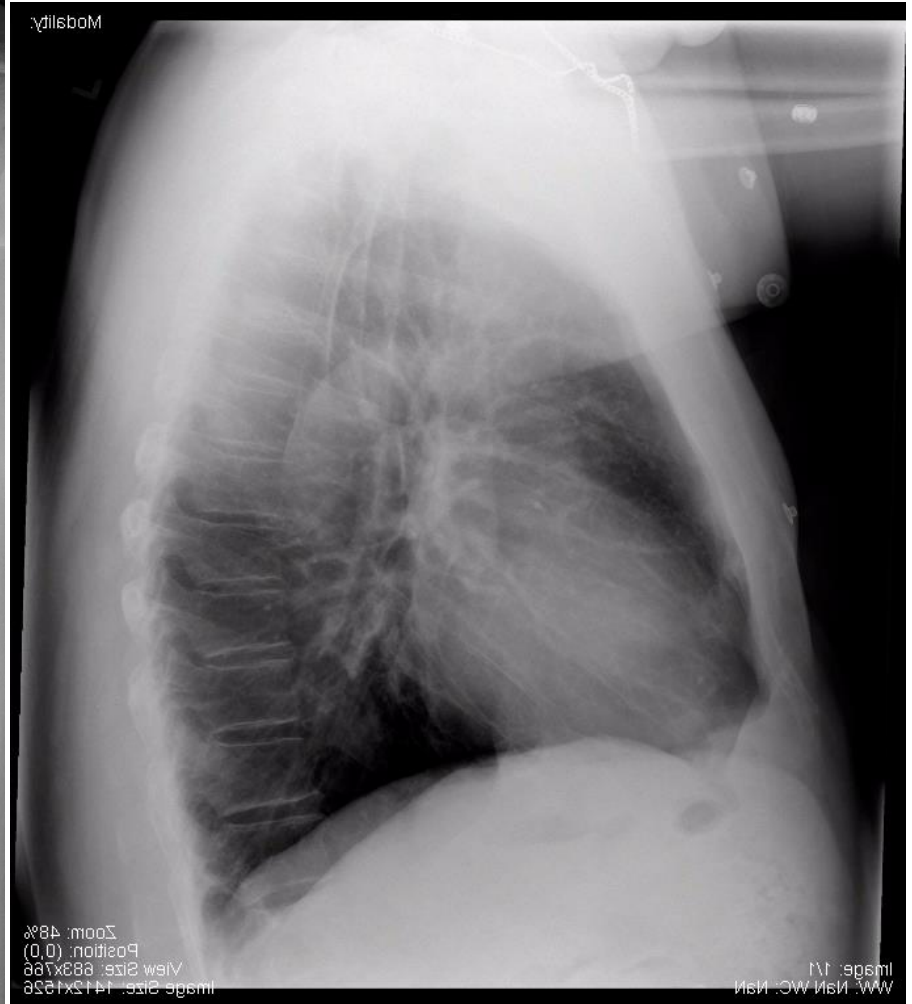
Displacement



Arch Fracture



Axial Skeleton X-Rays



Axial Skeleton X-Rays



Spine Deformities



Scoliosis

Spine is "S"
or "C" shaped



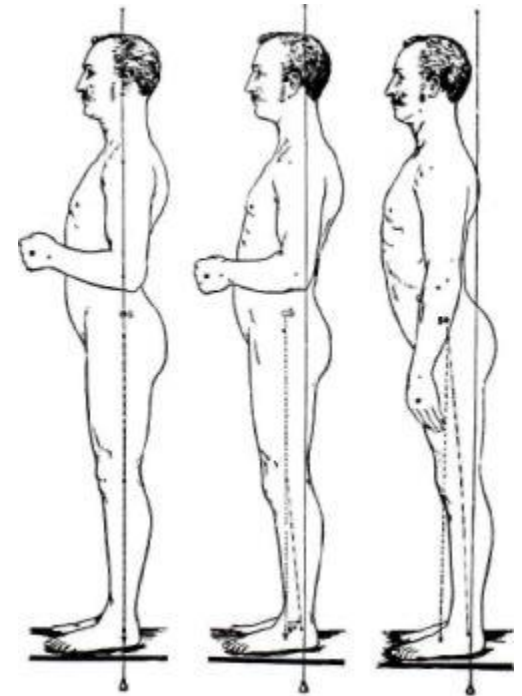
Kyphosis

Thoracic spine
curves outward

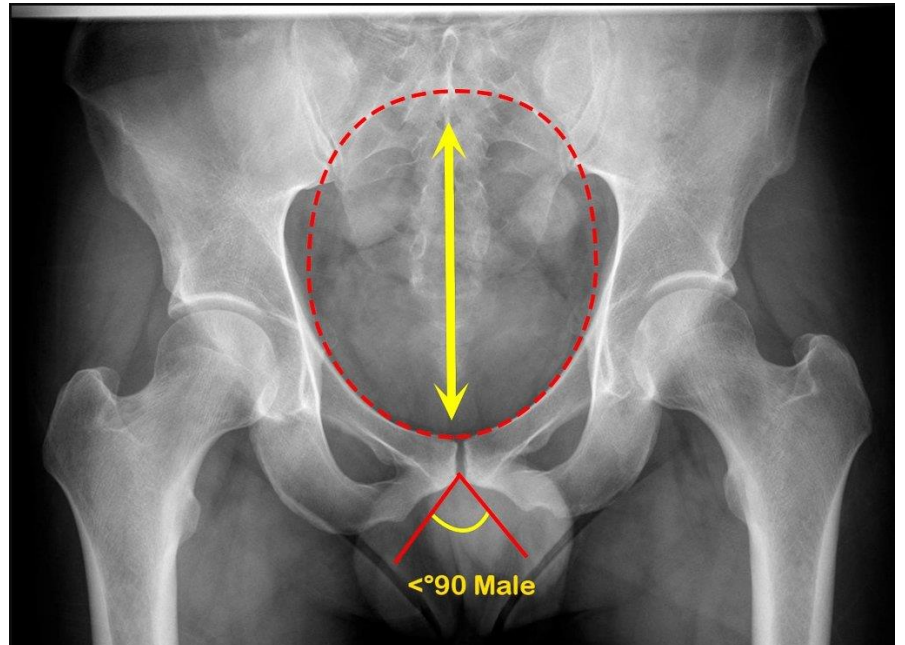
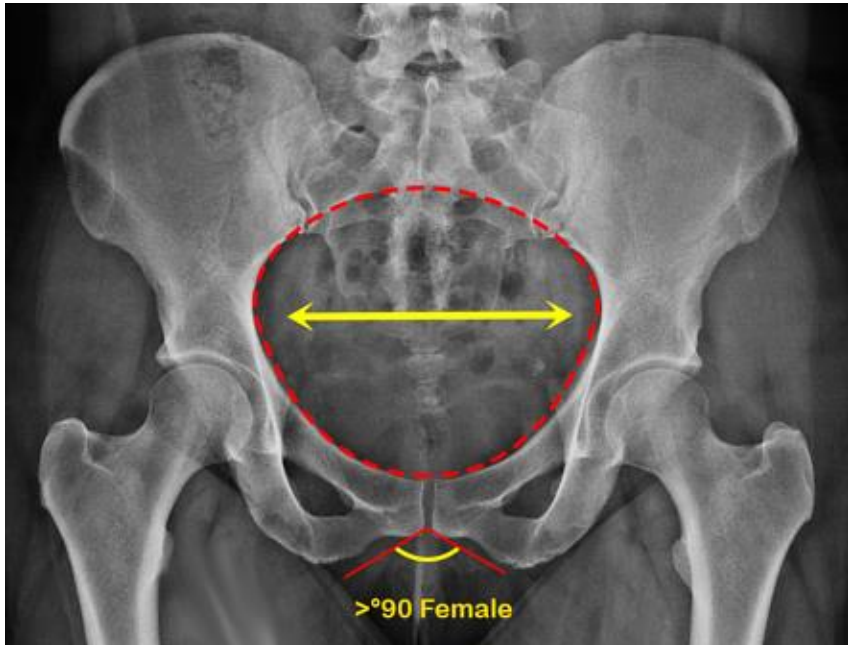


Lordosis

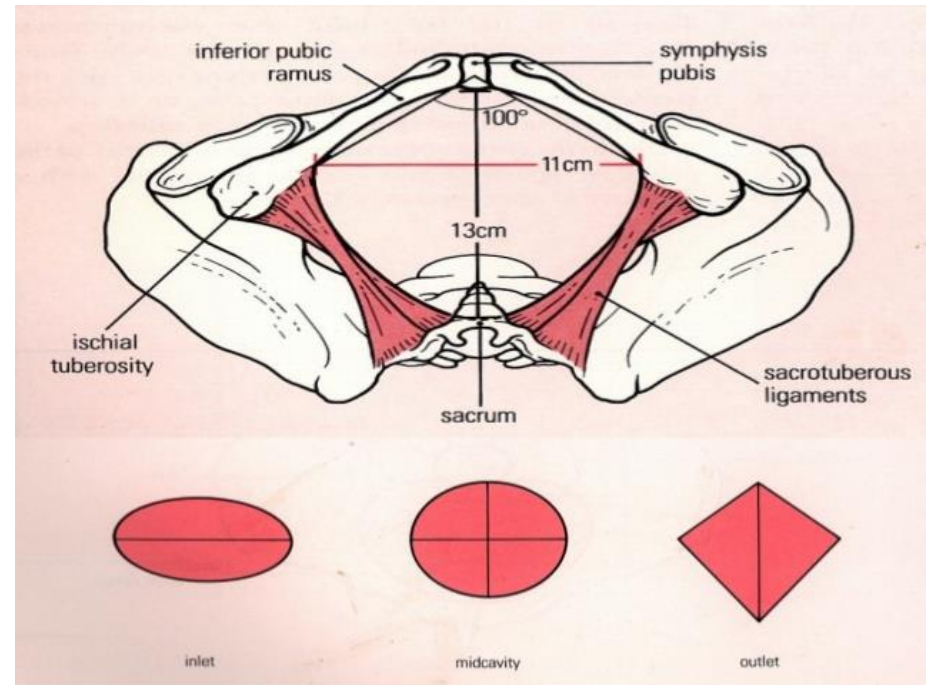
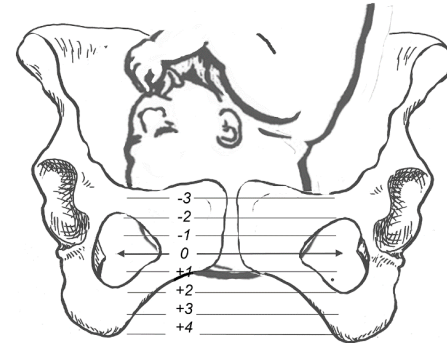
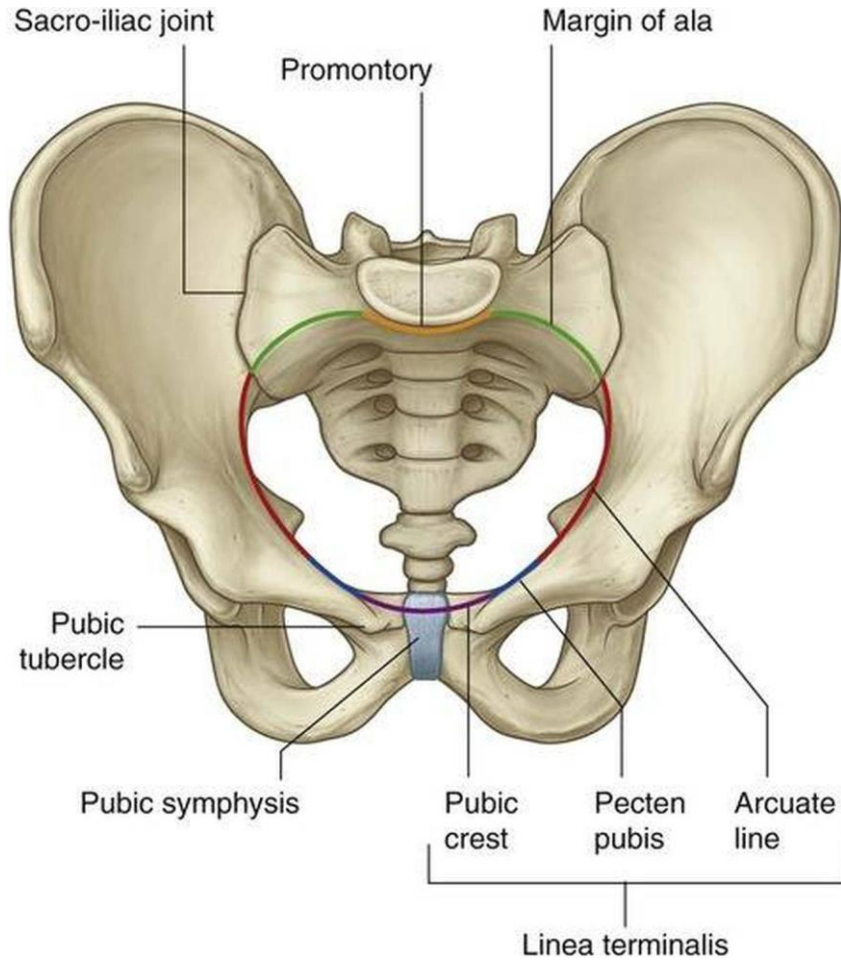
Lumbar spine
curves inward



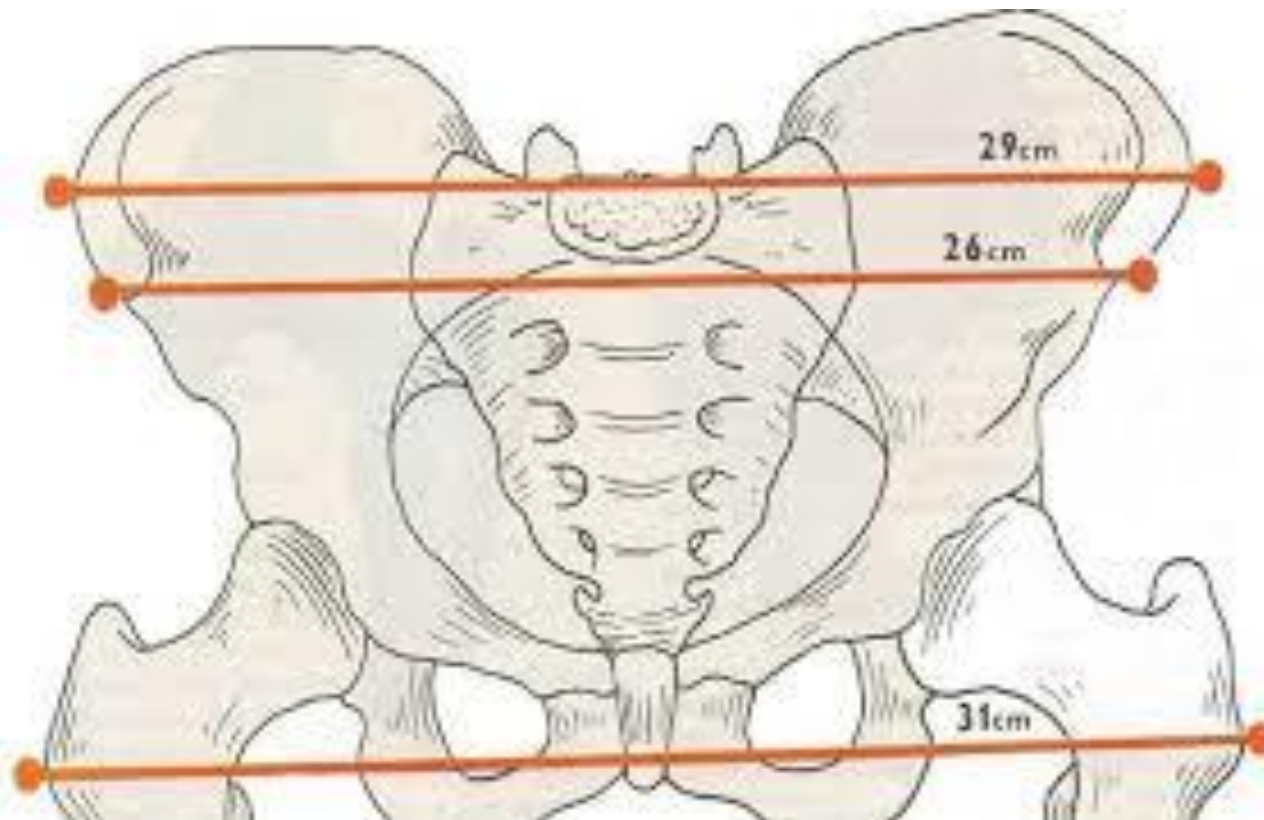
The Pelvis



Pelvic Inlet and Outlet



Pelvic External Diameters



Pelvic Internal Diameters

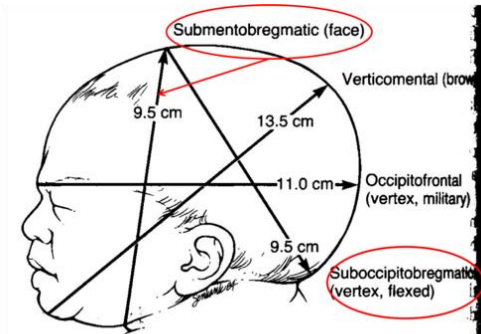
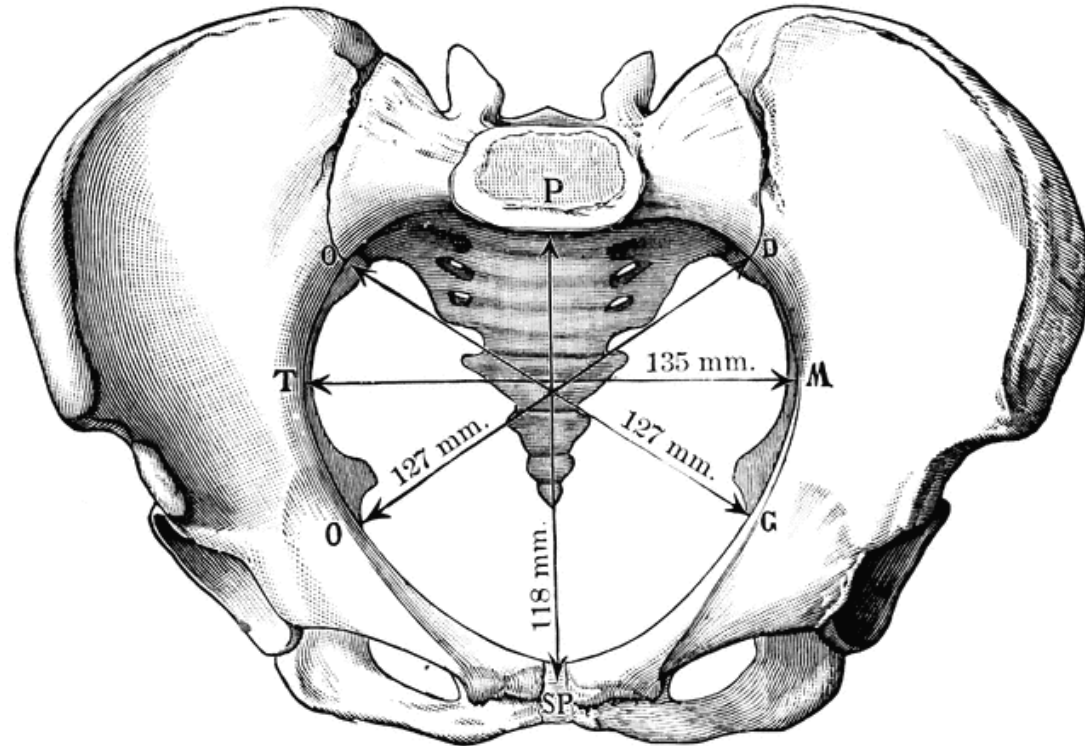
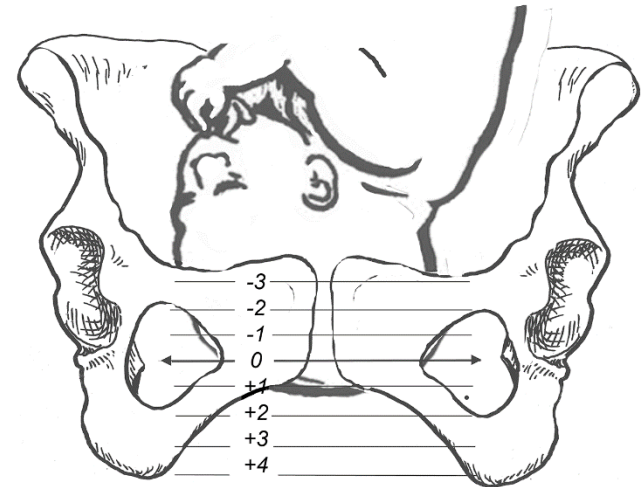
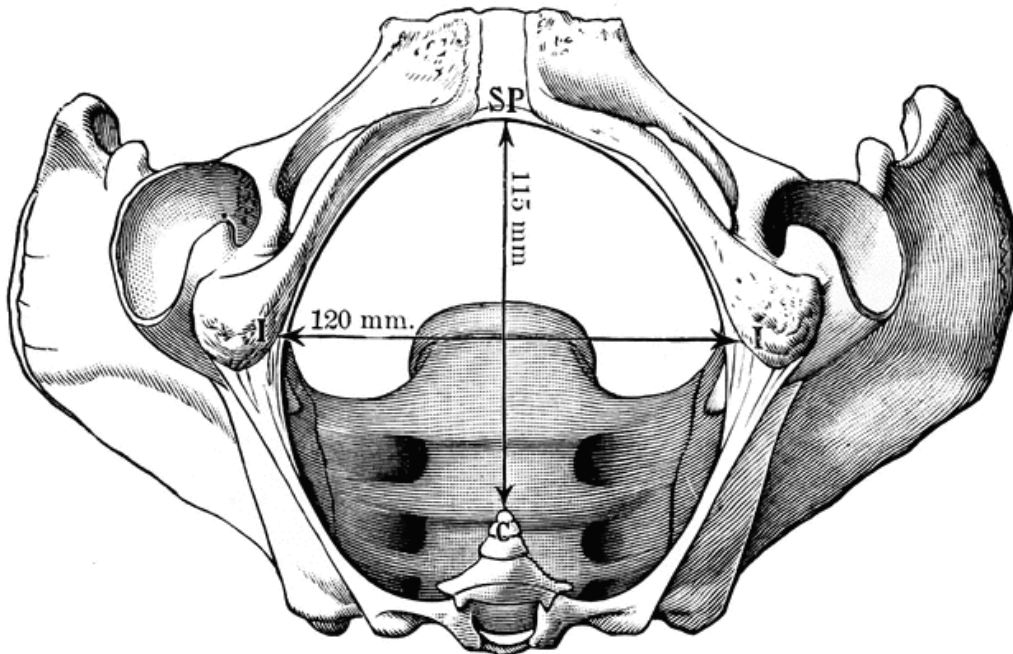
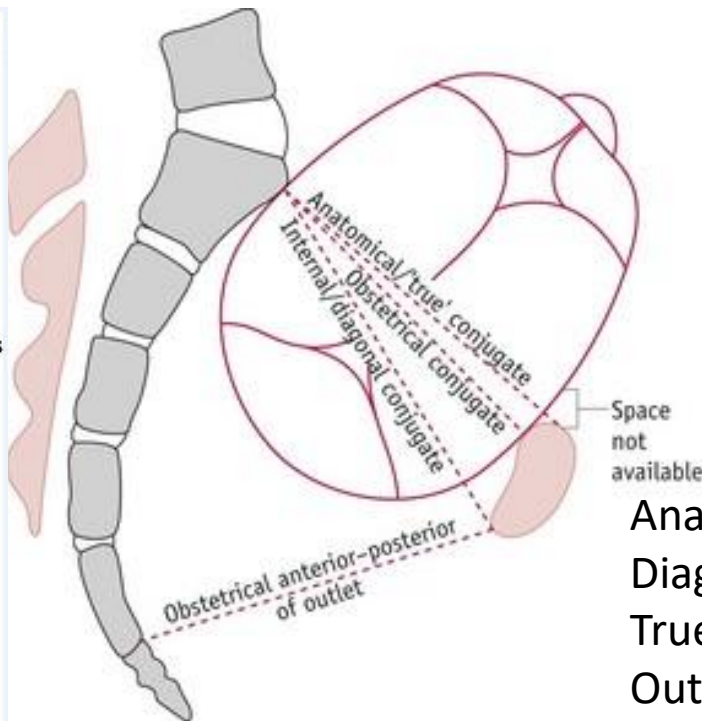
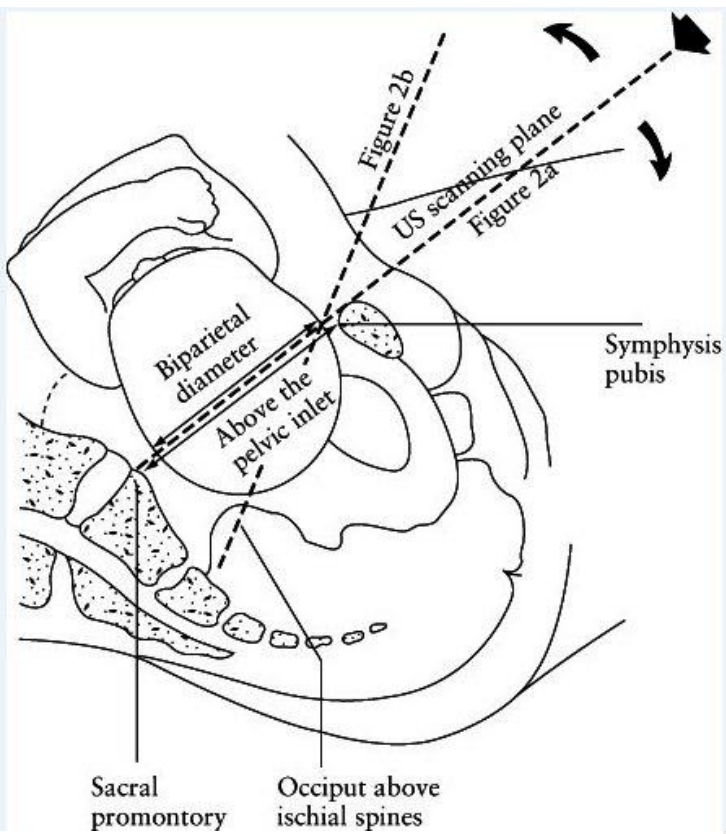


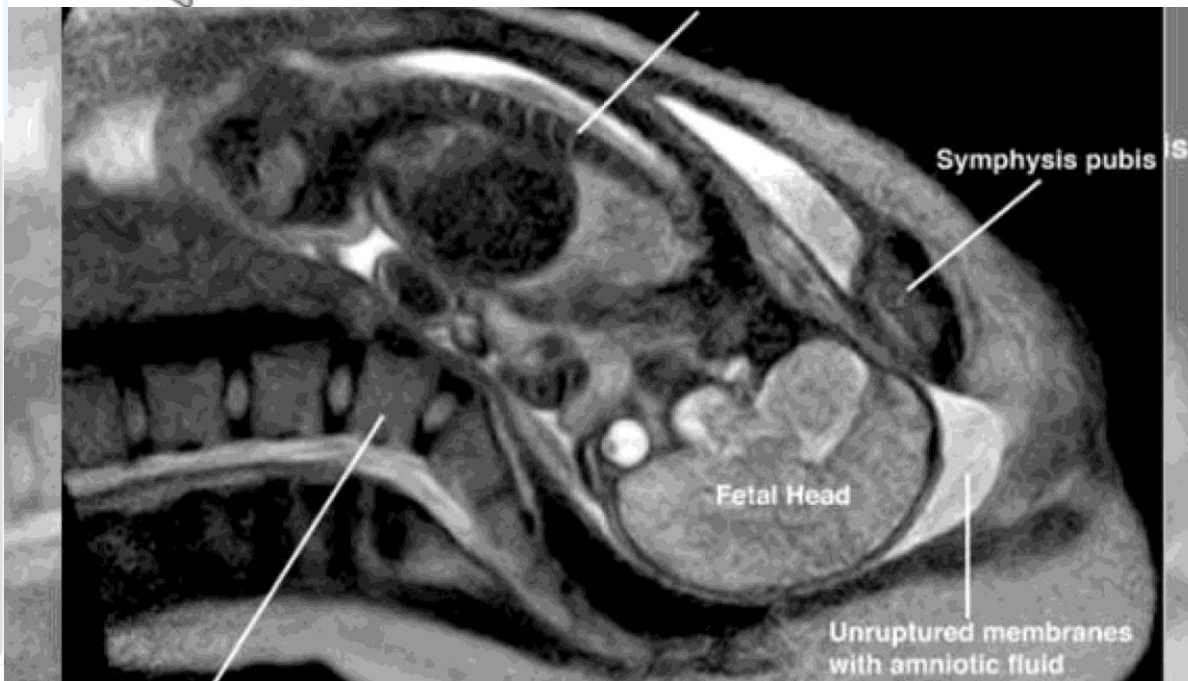
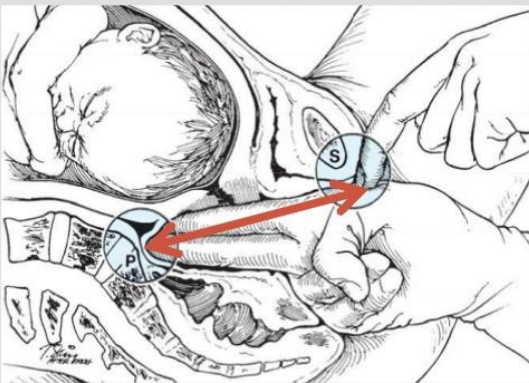
Fig. 13-2 Possible presenting diameters of the average term fetal skull.



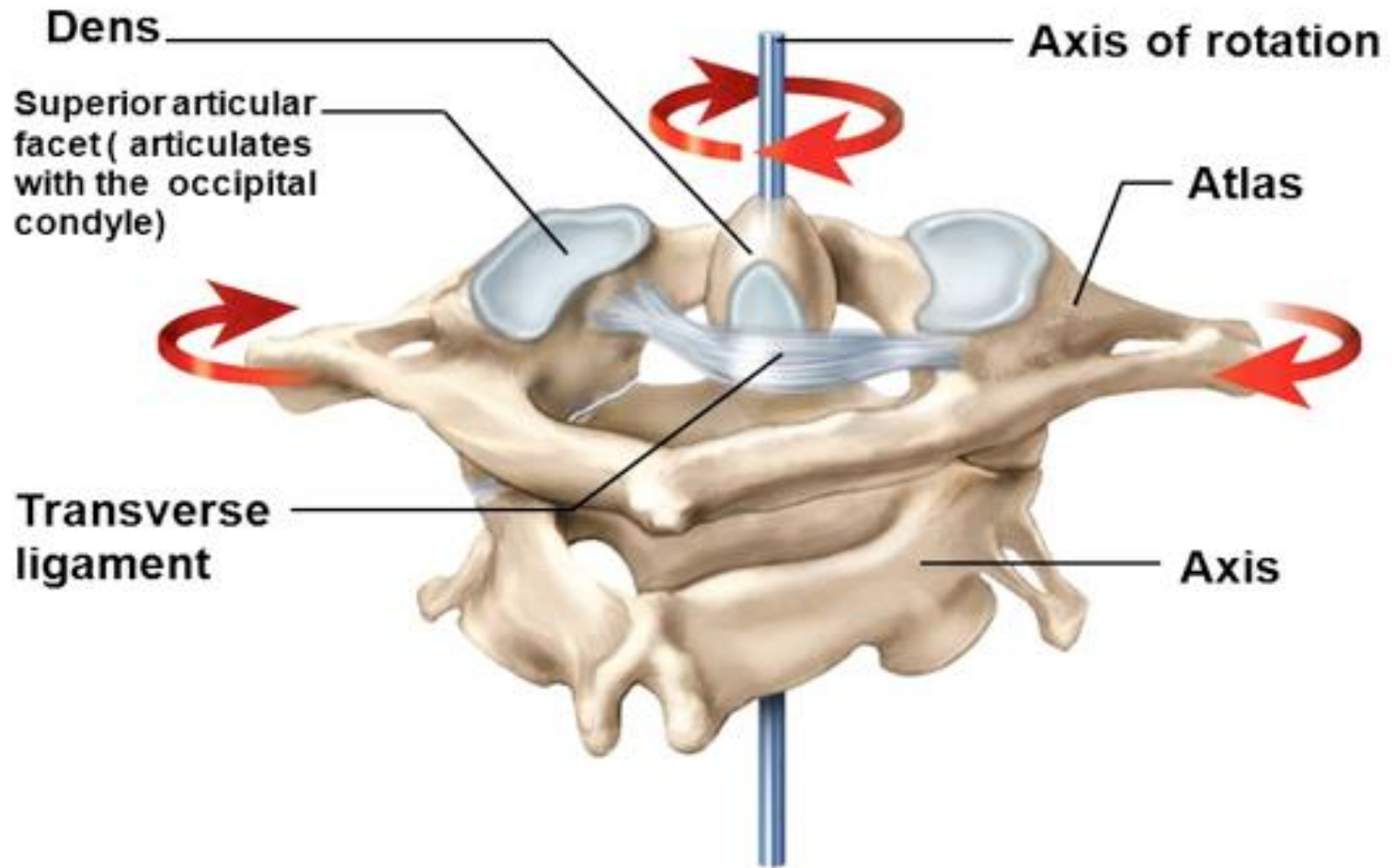


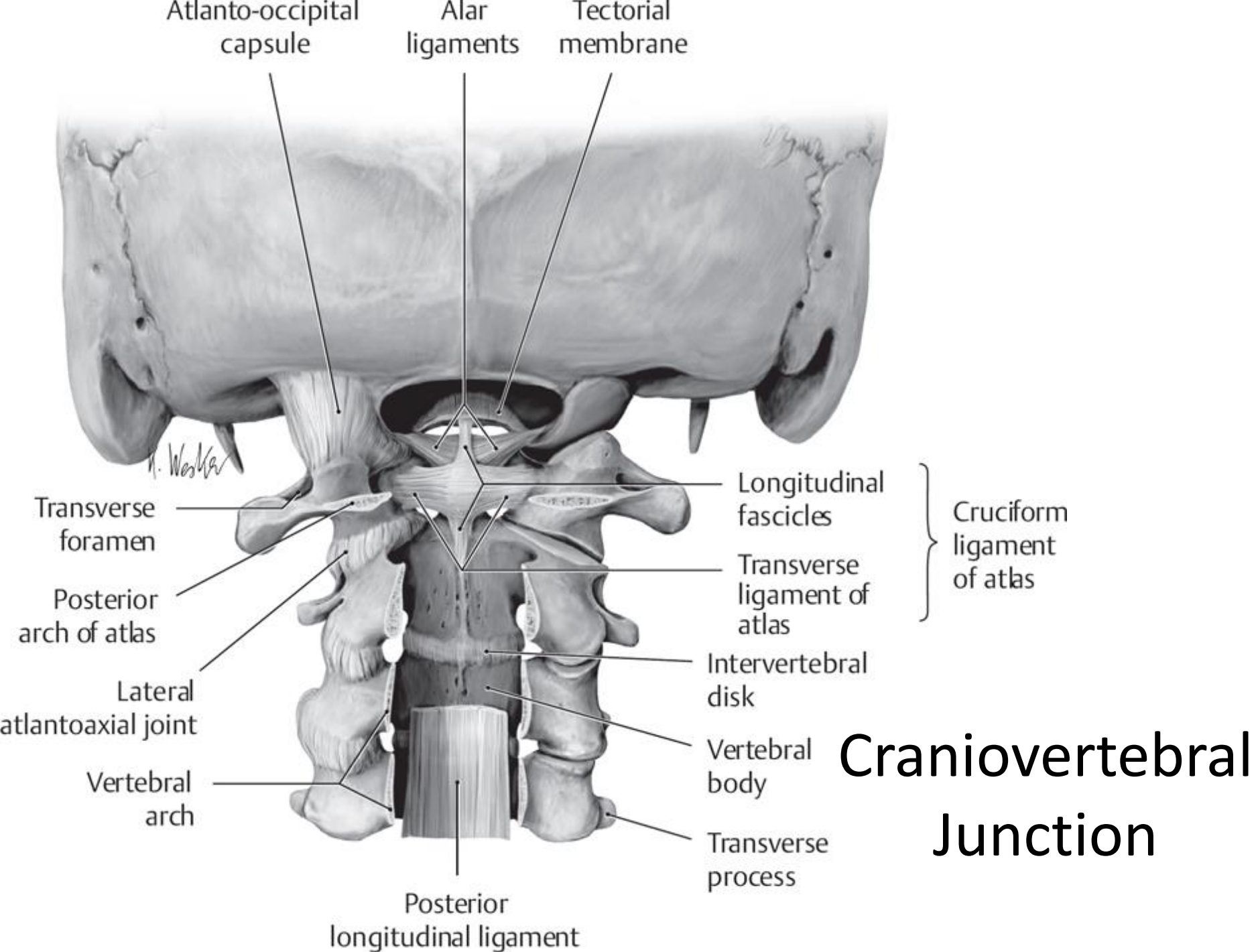
Anatomical Conj. 12cm
 Diagonal Conj. 12.5cm
 True Conj. 10.5cm
 Outlet 9.5cm → 11.5cm

VAGINAL EXAMINATION TO DETERMINE THE DIAGONAL CONJUGATE

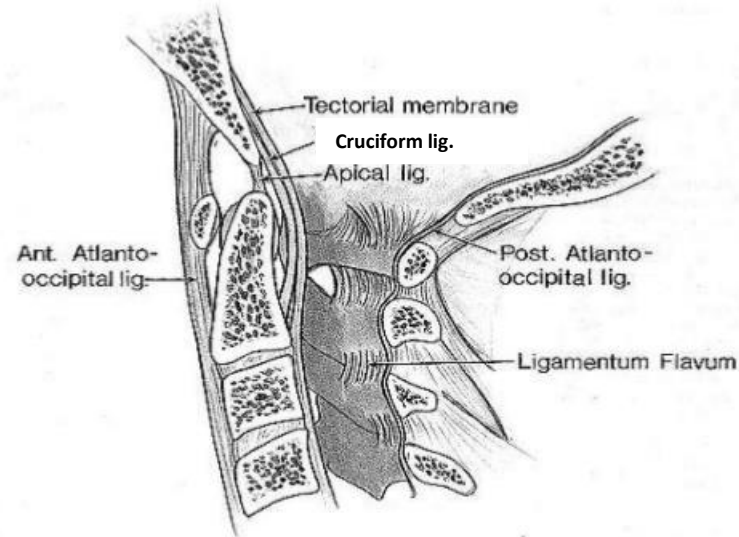
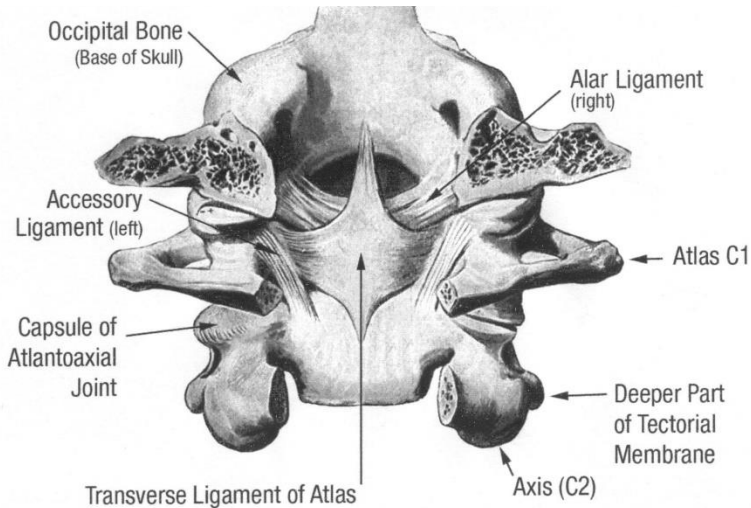
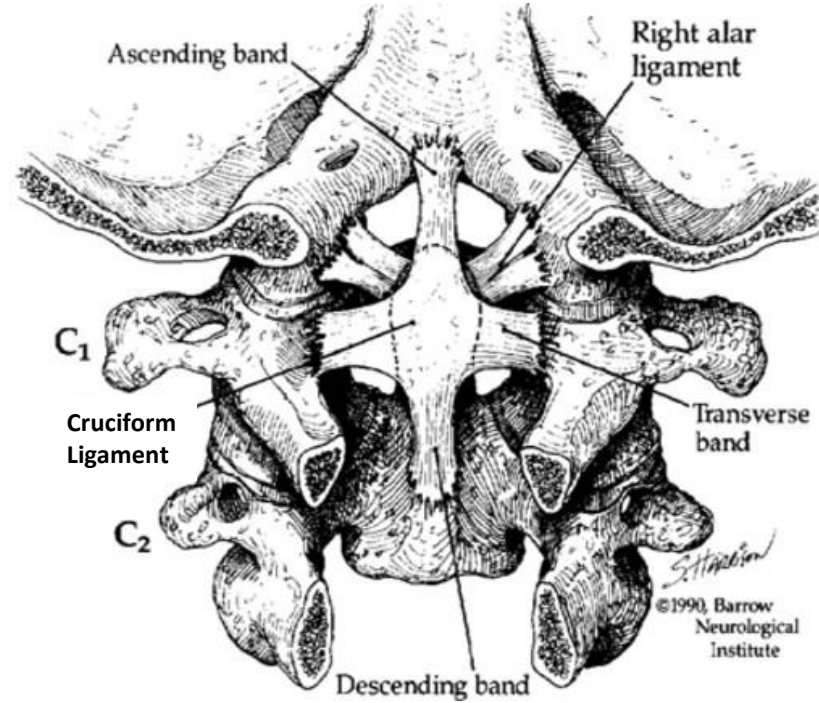
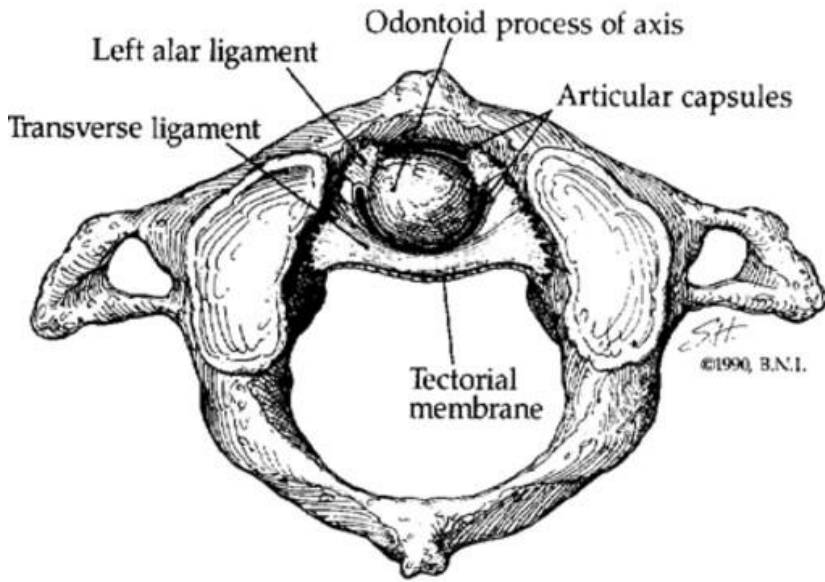


Atlantoaxial joint (pivot joint)



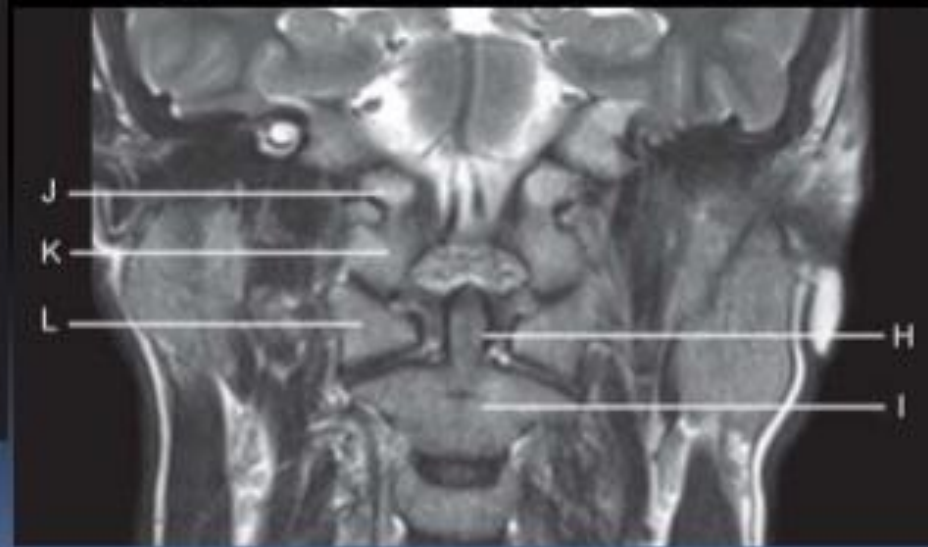
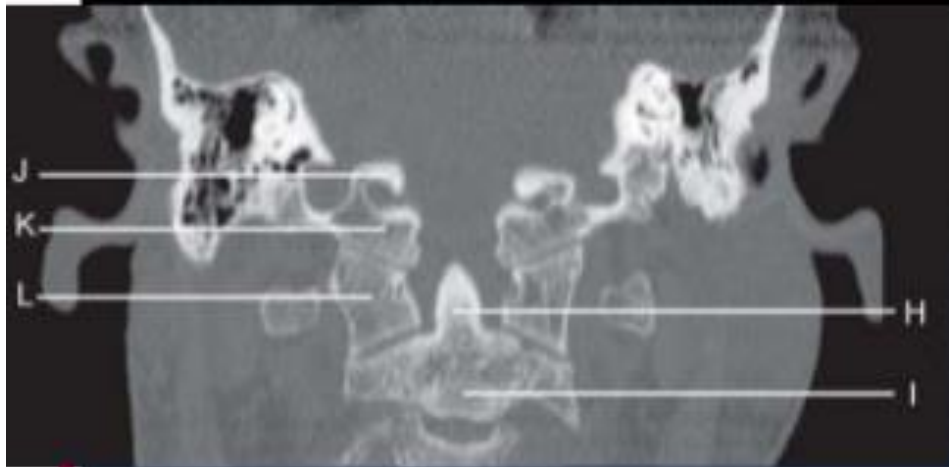
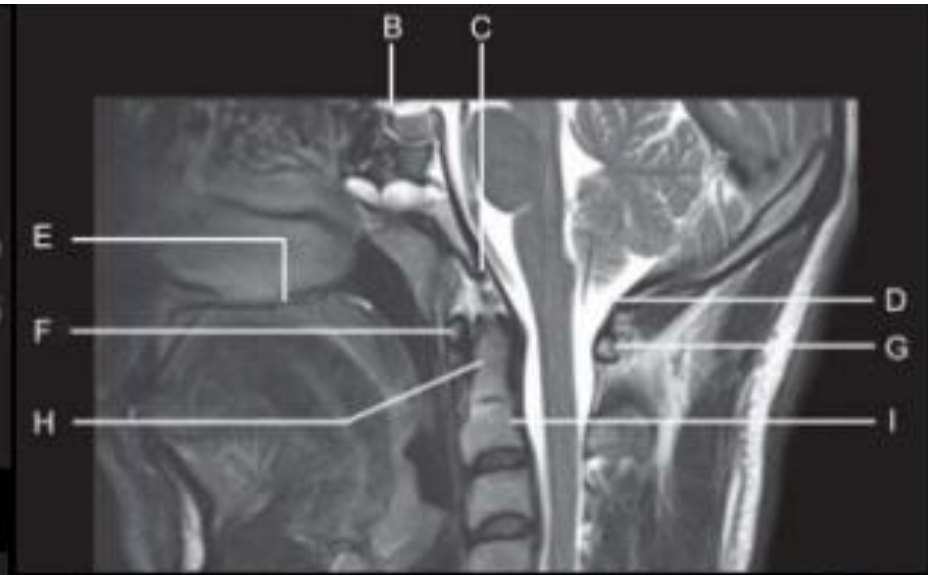
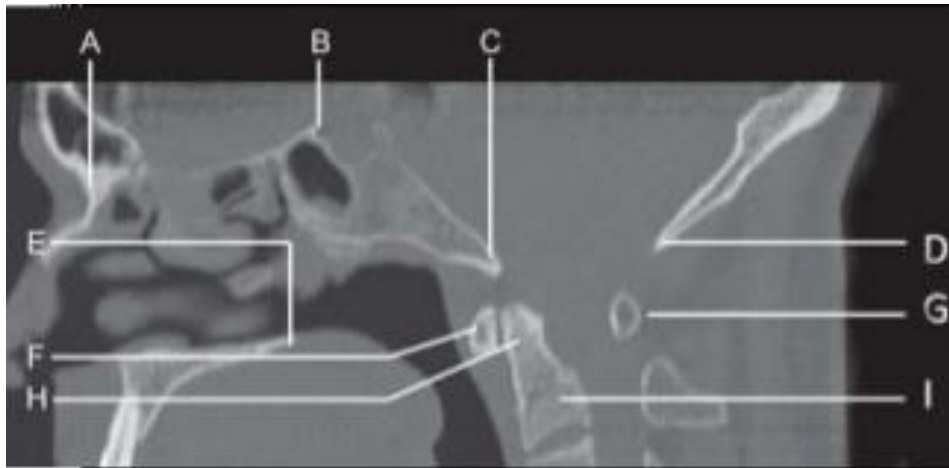


Craniovertebral Junction



Upper Cervical Spine: Posterior to Anterior View with Ligaments

Craniovertebral Junction MRI

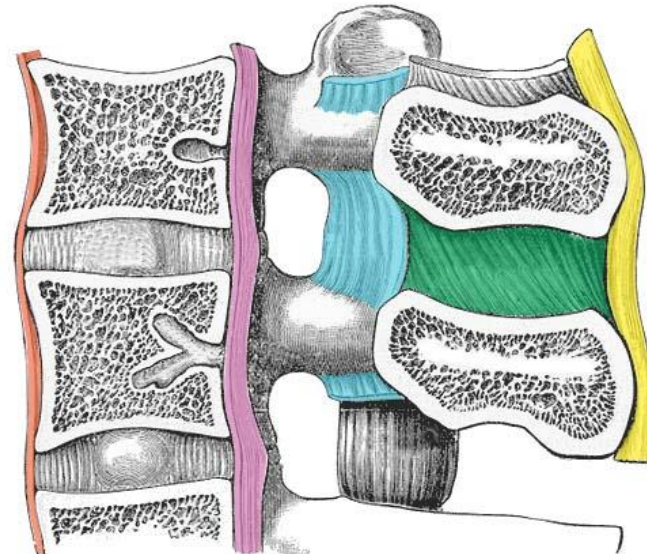
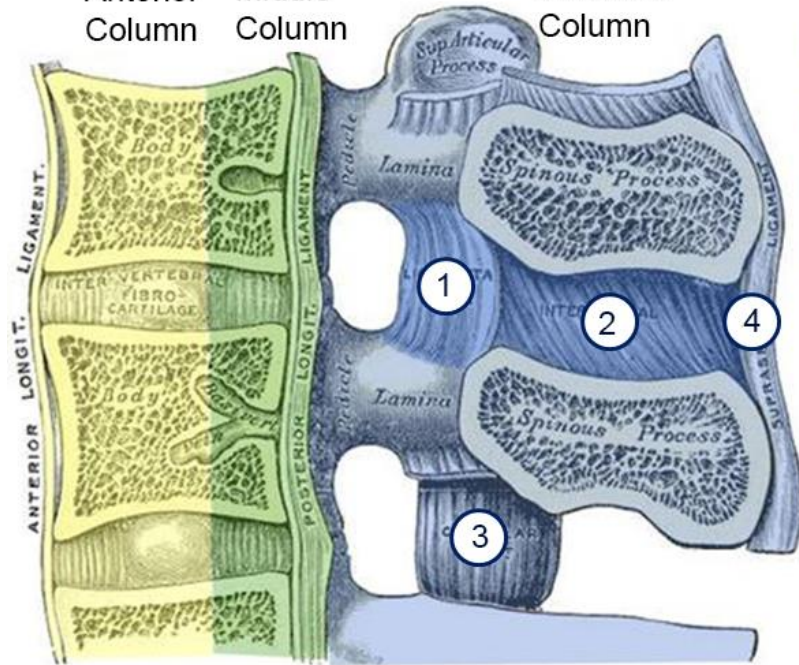


Axial Skeleton ligament arrangement

■ Anterior Column
■ Middle Column
■ Posterior Column

Posterior Ligamentous Complex

- ① Ligamentum flavum
- ② Interspinous ligament
- ③ Facet capsule
- ④ Supraspinous ligament

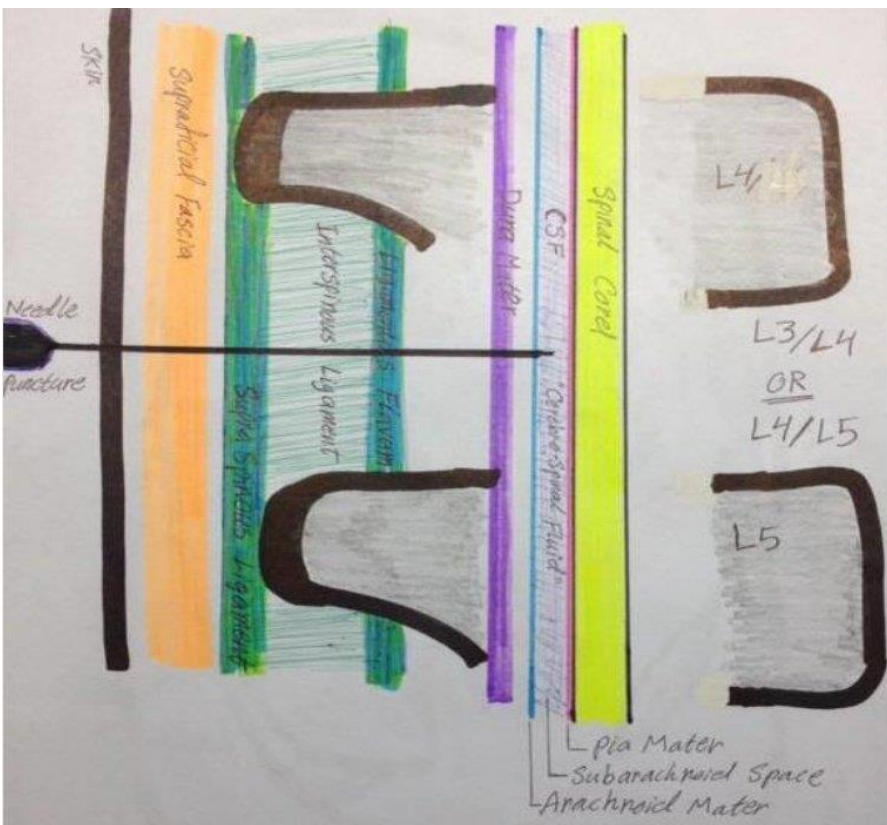


- Anterior longit. ligament
- Posterior longit. ligament
- Ligamentum flavum
- Interspinous ligament
- Supraspinous ligament

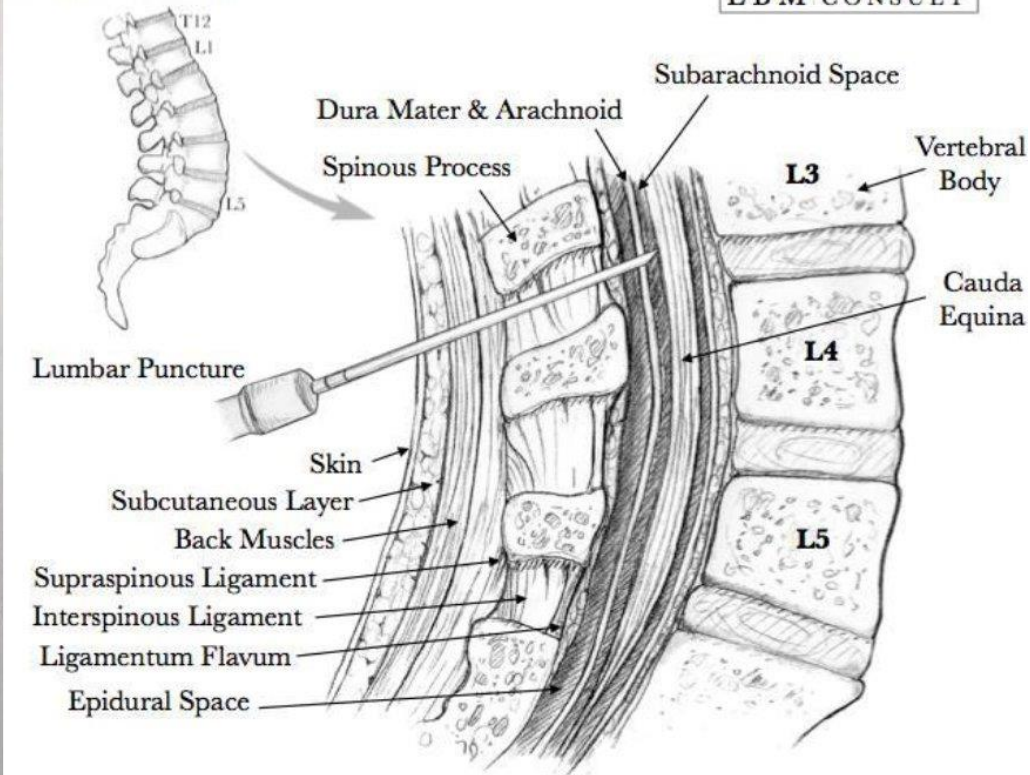
Axial Skeleton MRI



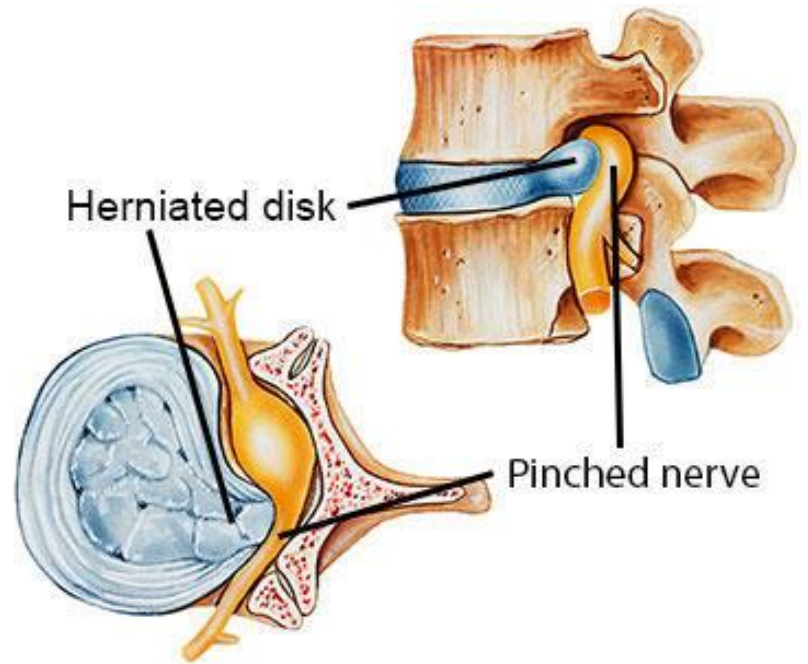
Lumbar Puncture



Lumbar Puncture



Herniated disk



Herniated disk MRI

