

Course of vessels and nerves in limbs



Radovan Hudák
David Kachlík

Department of Anatomy
2. LF UK

Arteries of upper limb

Heart

Arcus aortae

(Truncus brachiocephalicus)

Arteria subclavia

1. Arteria axillaris

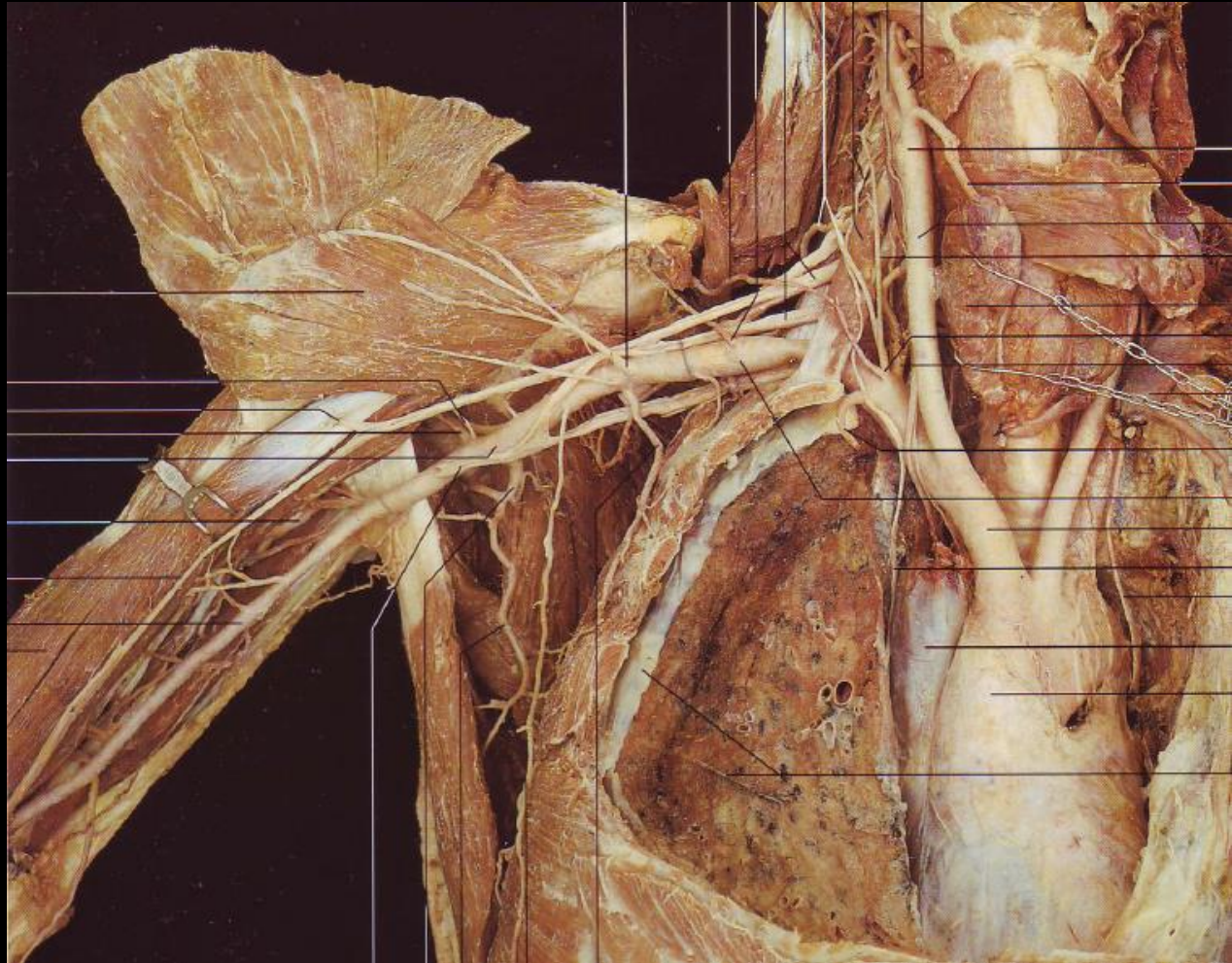
2. Arteria brachialis

3. Arteria radialis

4. Arteria ulnaris

- Arcus palmaris superficialis

- Arcus palmaris profundus



Arteries of upper limb

Heart

Arcus aortae

(Truncus brachiocephalicus)

Arteria subclavia

1. Arteria axillaris

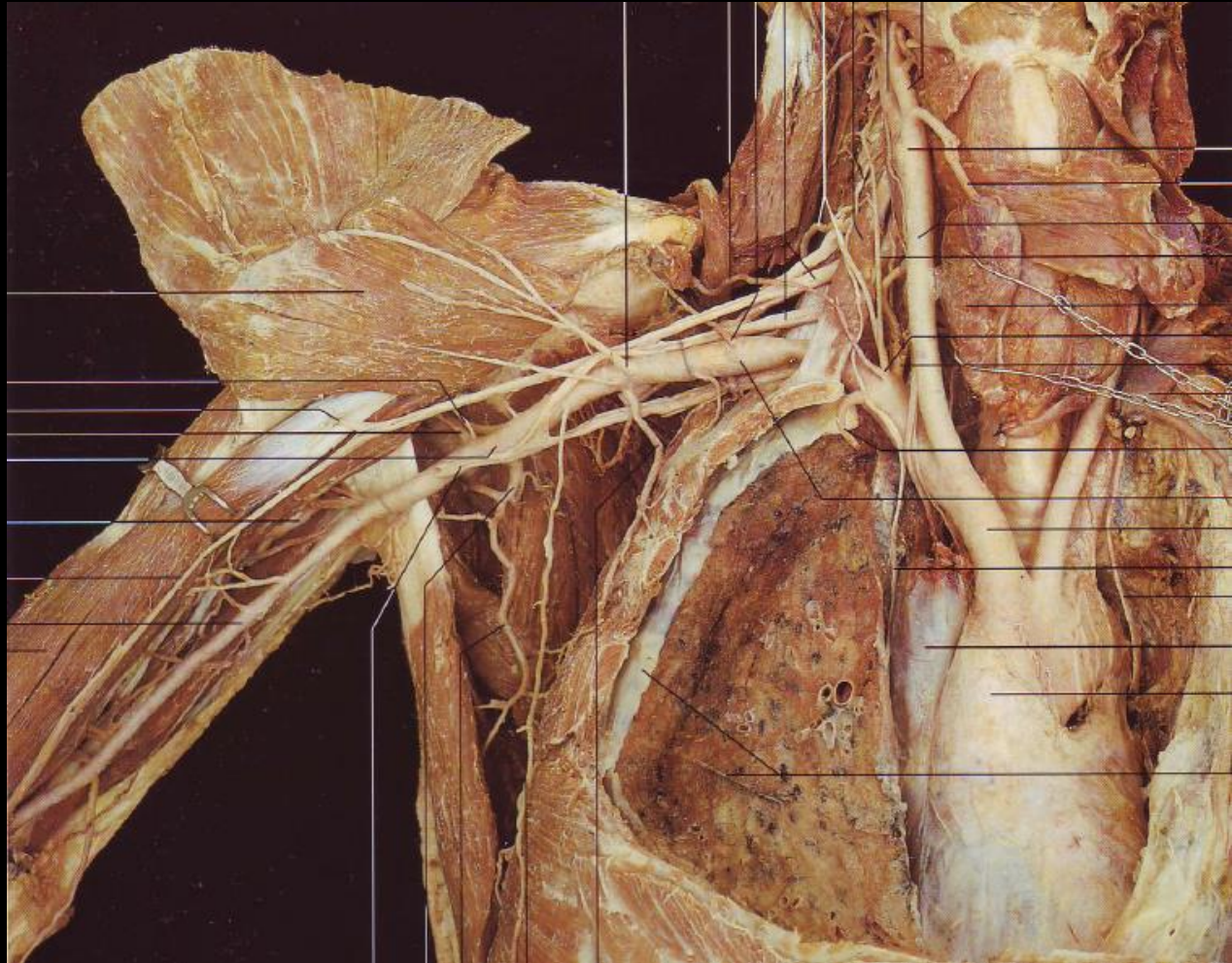
2. Arteria brachialis

3. Arteria radialis

4. Arteria ulnaris

- Arcus palmaris superficialis

- Arcus palmaris profundus



Arteria subclavia

Srdce
Arcus aortae
(Truncus
brachiocephalicus)

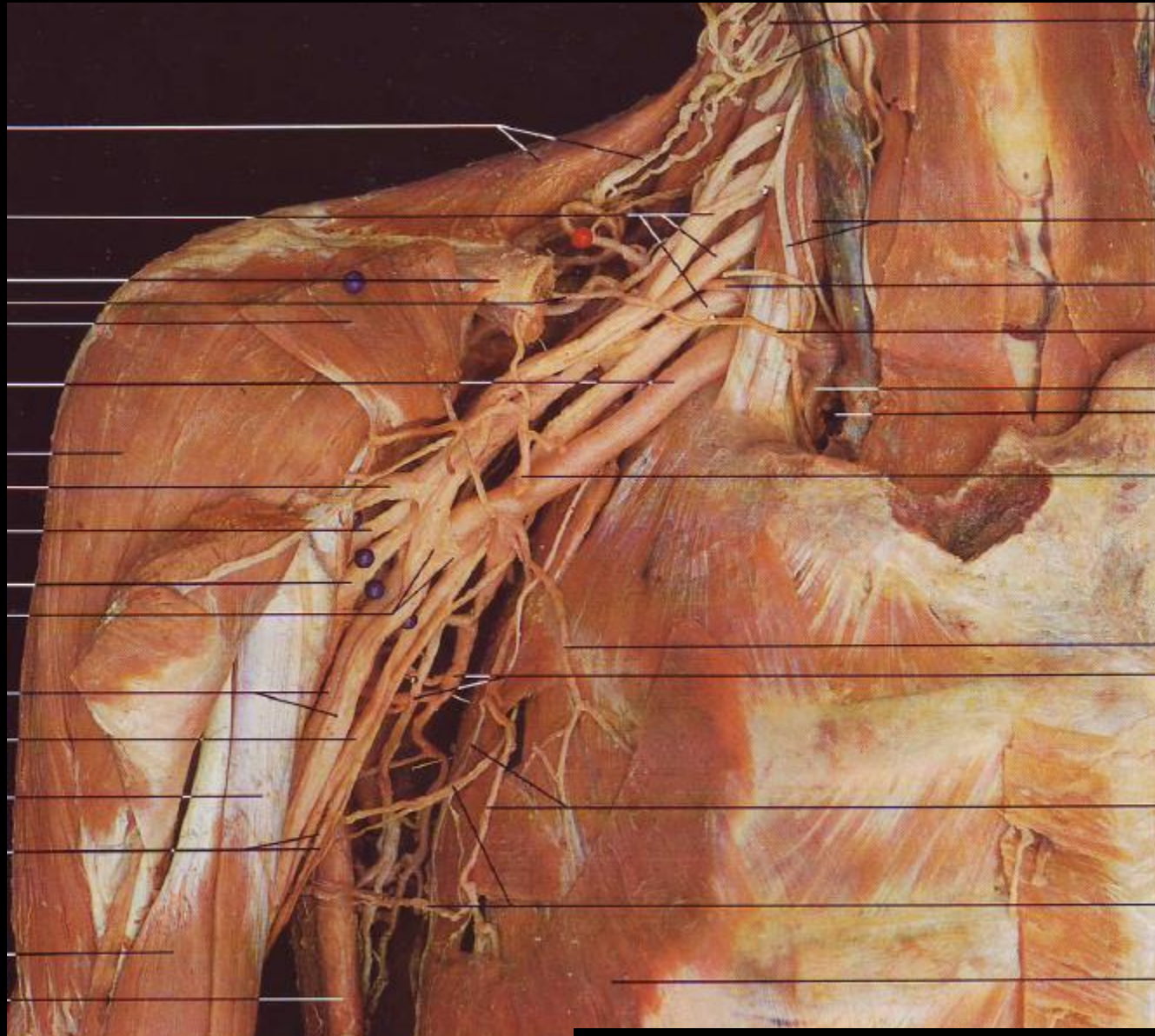
Arteria subclavia

Course:

1. across 1st rib
2. through
fissura scalenorum
3. Across 1st rib changes
name into a. axillaris

Important branch:

Arteria suprascapularis

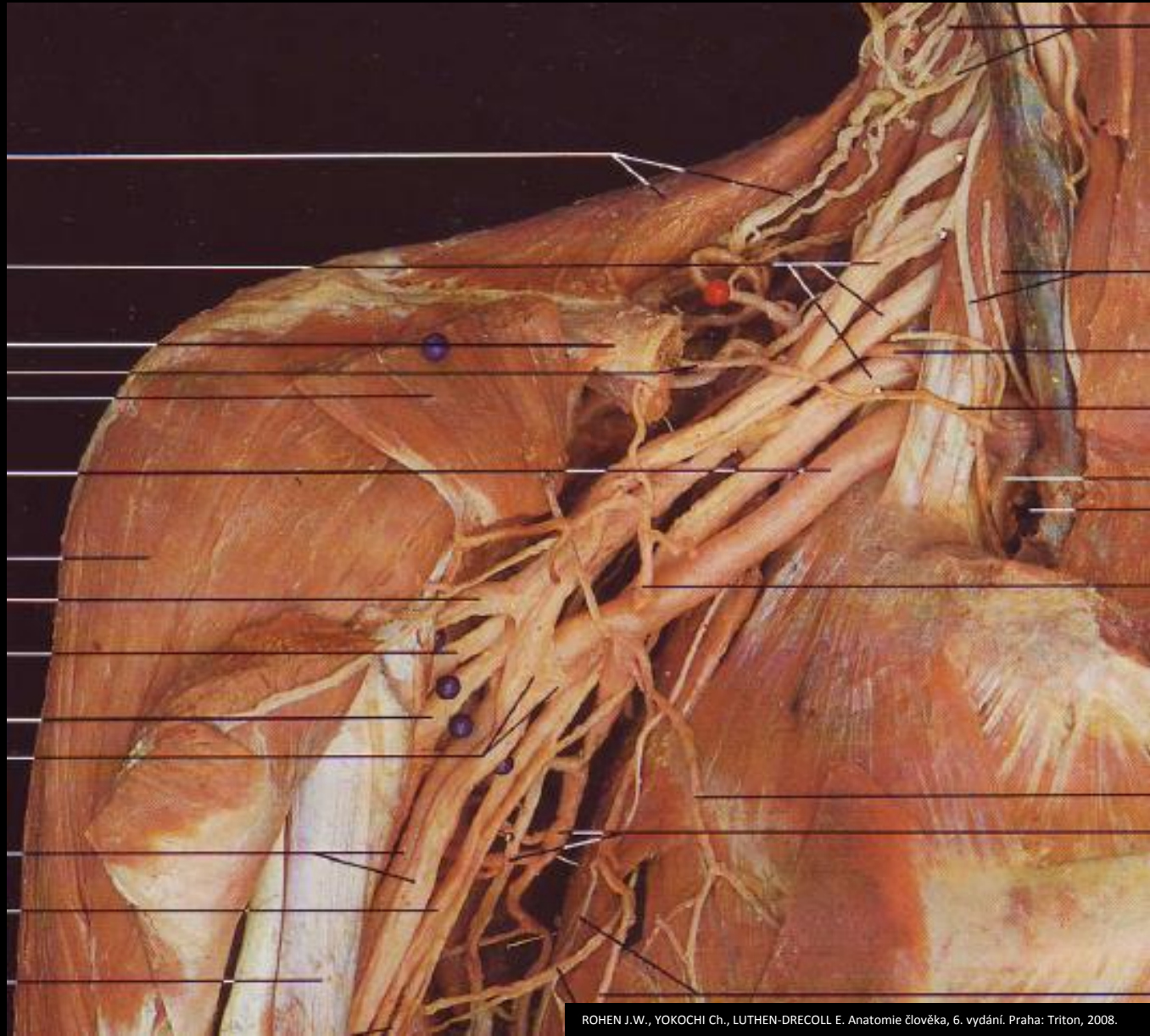


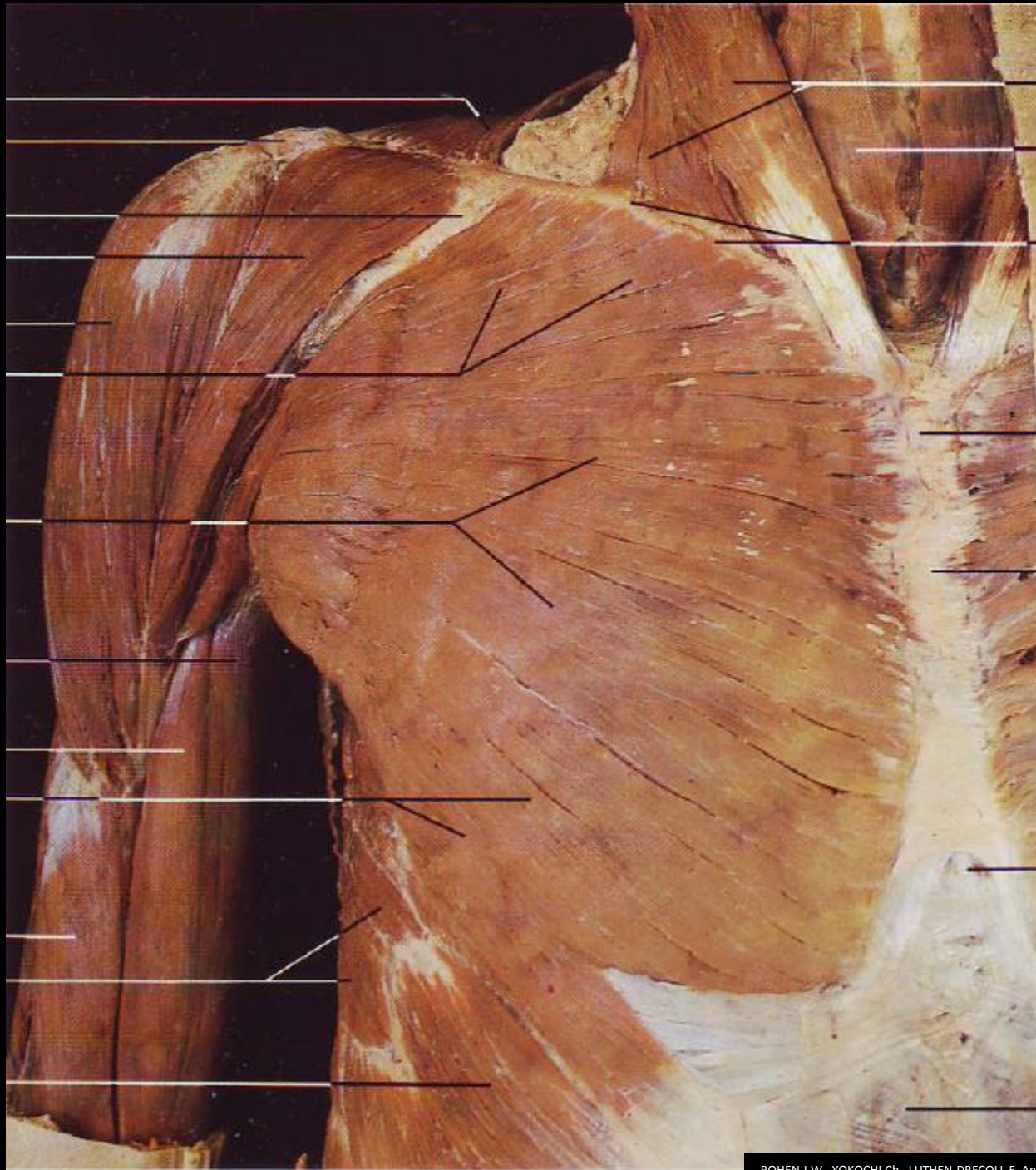
Arteria subclavia

Arteria suprascapularis

Course:

1. In front of m. scalenus anterior
2. across lig. transversum scapulae superius
3. into fossa supraspinata
4. through incisura spinoglenoidalis
5. into fossa infraspinata







Arteria axillaris

- continuation of a. subclavia
- within fossa axillaris

Course:

1. across 1st rib
2. behind m. pectoralis minor
3. to inferior margin of m. latissimus dorsi

Important branches:

Arteria thoracoacromialis
Arteria thoracica superior
Arteria thoracica lateralis
Arteria subscapularis
Arteria circumflexa scapulae
Arteria thoracodorsalis
Arteria circumflexa
humeri anterior + posterior



Arteria axillaris

Arteria thoracica lateralis

Course:

- descends on m. serratus anterior



Arteria axillaris

Arteria subscapularis

- 1 Arteria circumflexa scapulae
- through foramen omotricipitale

- 2 Arteria thoracodorsalis
- descends on m. latissimus dorsi



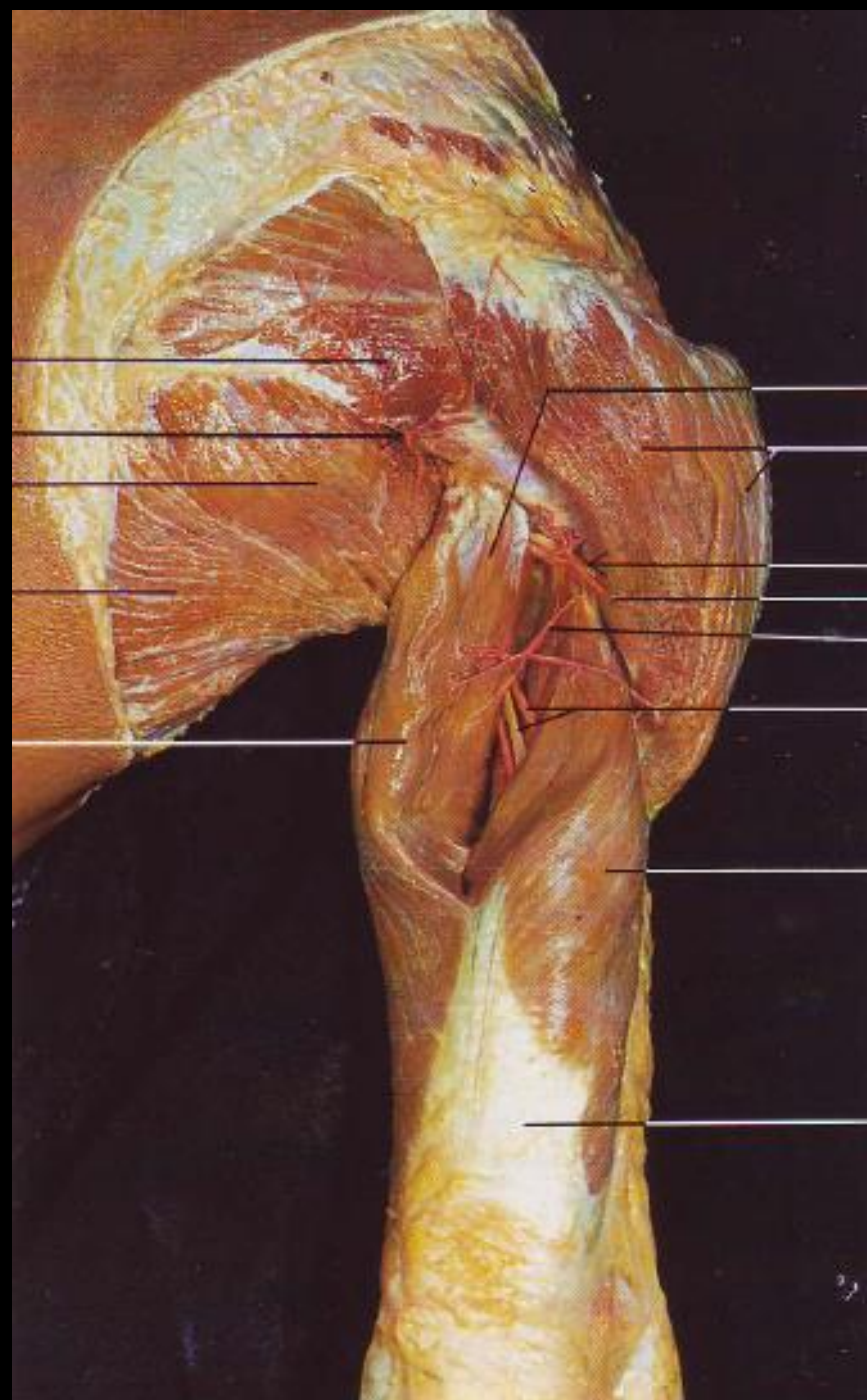
Arteria axillaris

Arteria circumflexa humeri posterior

Course:

- together with n. axillaris

1. through foramen humerotricipitale
2. into m. deltoideus



Arteria brachialis

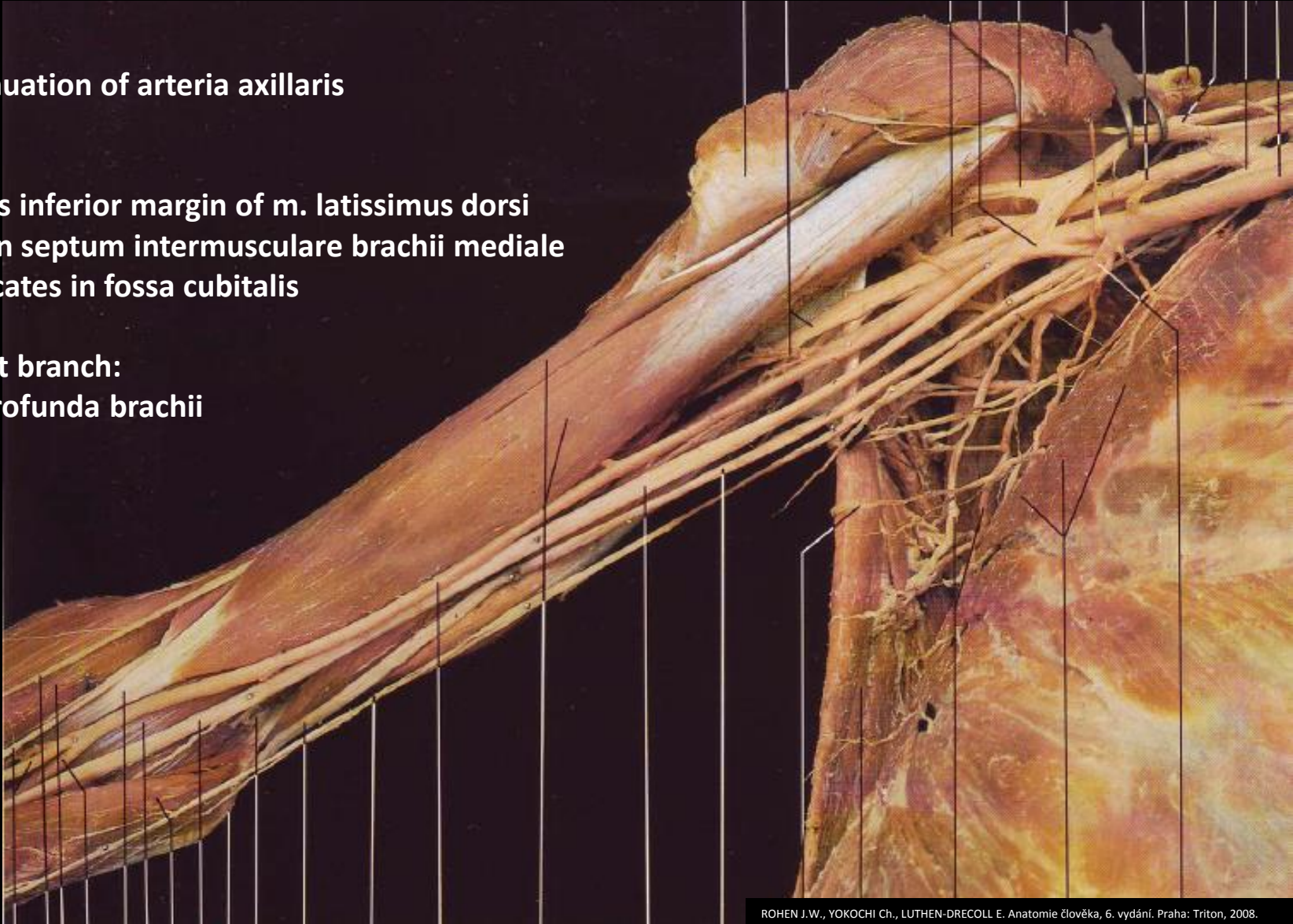
- continuation of arteria axillaris

Course:

1. across inferior margin of m. latissimus dorsi
2. within septum intermusculare brachii mediale
3. bifurcates in fossa cubitalis

Important branch:

Arteria profunda brachii

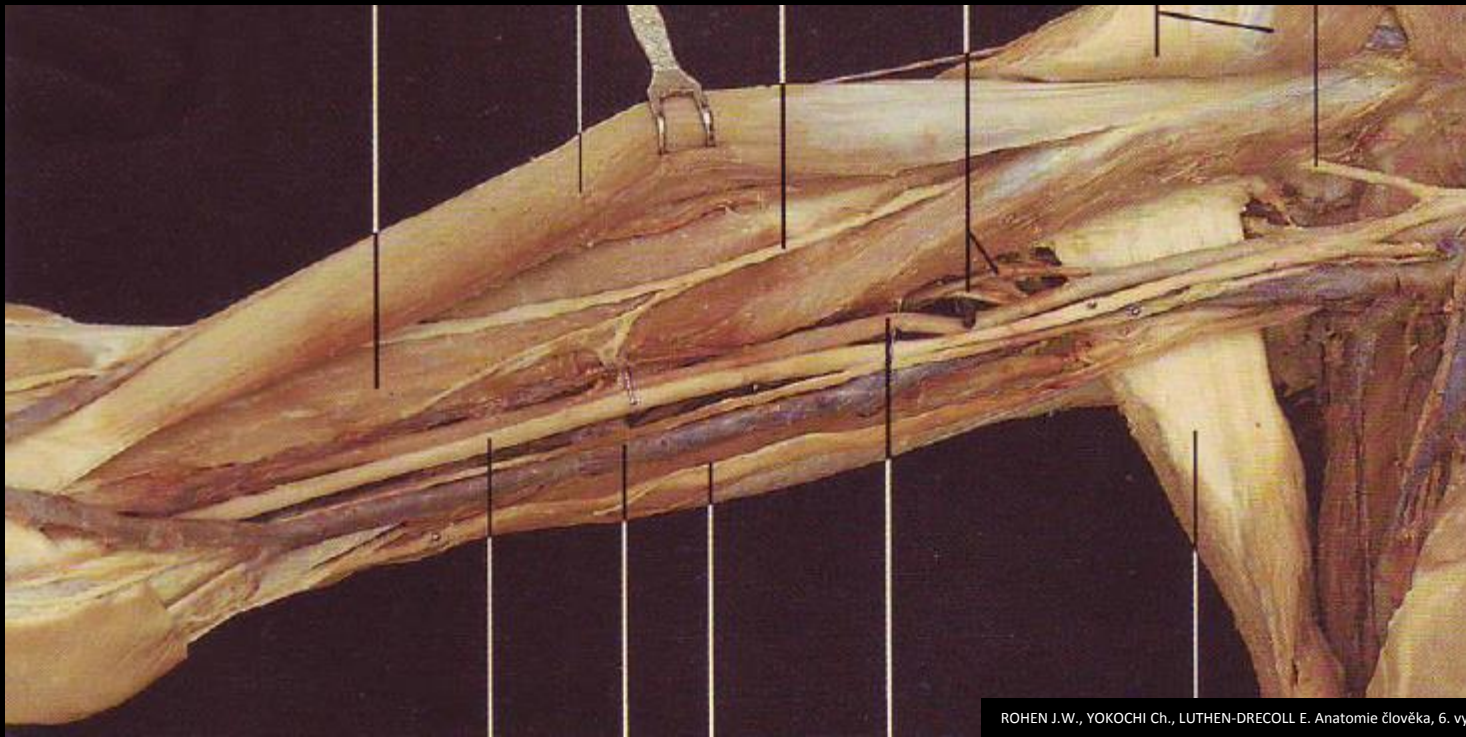


Arteria brachialis

- continuation of arteria axillaris

Course:

1. across inferior margin of m. latissimus dorsi
2. within septum intermusculare brachii mediale
3. bifurcates in fossa cubitalis



Arteria brachialis

Arteria profunda brachii

Course:

- together with n. radialis
- within canalis nervi radialis

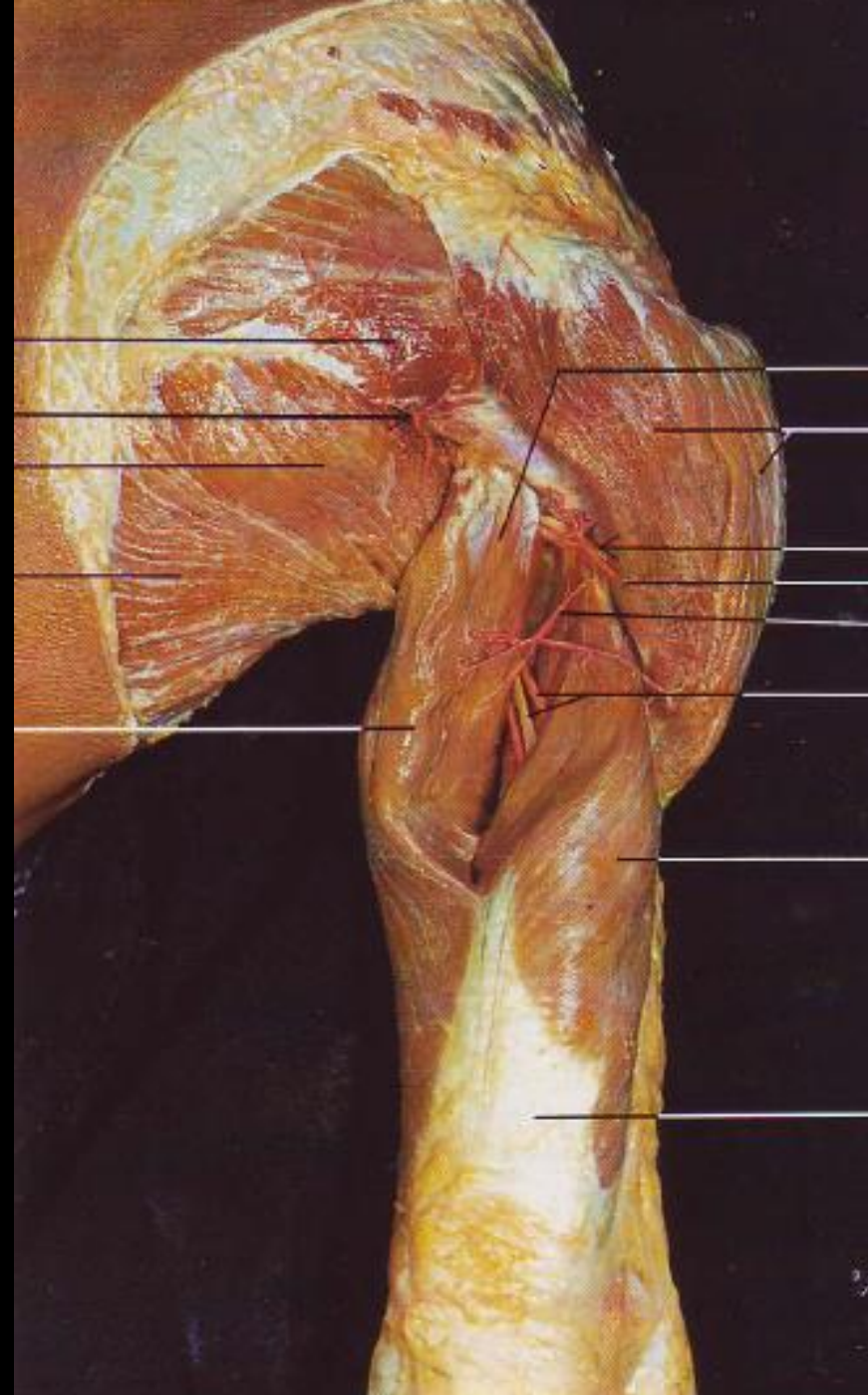


Arteria brachialis

Arteria profunda brachii

Course:

- together with n. radialis
- within canalis nervi radialis



Arteria brachialis

- continuation of arteria axillaris

Course:

1. across inferior margin of m. latissimus dorsi
2. within septum intermusculare brachii mediale
3. bifurcates in fossa cubitalis



Arteria brachialis

- continuation of arteria axillaris

Course:

1. across inferior margin of m. latissimus dorsi
2. within septum intermusculare brachii mediale
3. together with n. medianus
4. passing under aponeurosis bicipitalis
5. bifurcates in fossa cubitalis into a. radialis and a. ulnaris



Arteria brachialis

- continuation of arteria axillaris

Course:

1. across inferior margin of m. latissimus dorsi
2. within septum intermusculare brachii mediale
3. together with n. medianus
4. passing under aponeurosis bicipitalis
5. bifurcates in fossa cubitalis into a. radialis and a. ulnaris



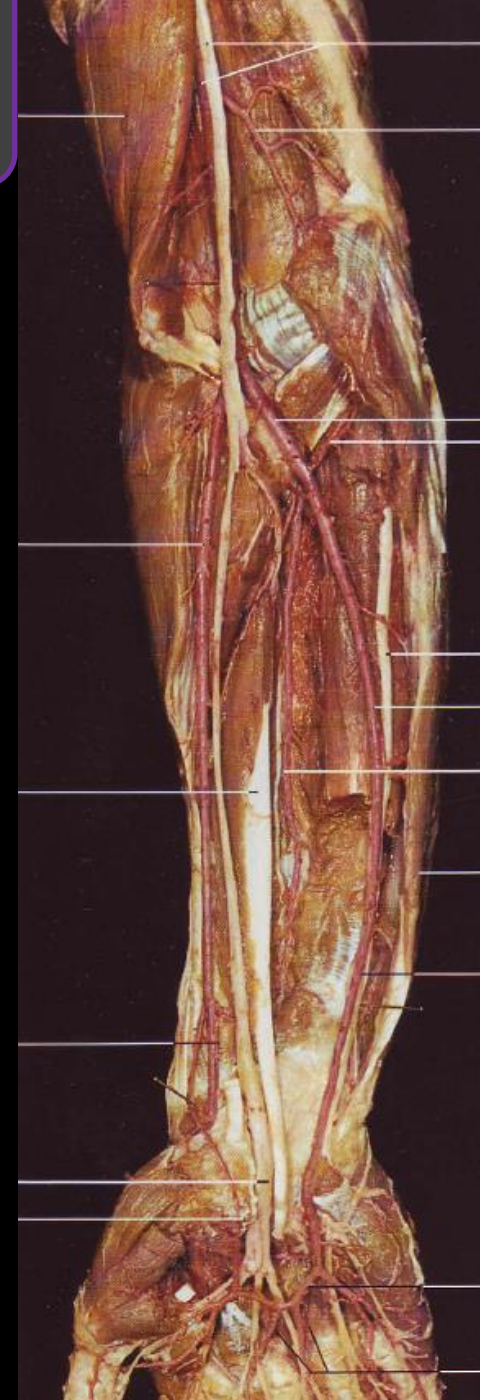
Arteria radialis et ulnaris

Arteria radialis

- lateral continuation of arteria brachialis
- together with r. superficialis n. radialis

Arteria ulnaris

- medial continuation of arteria brachialis
- together with n. ulnaris



Arteria radialis

- lateral continuation of arteria brachialis
- together with r. superficialis n. radialis

Course

1. from fossa cubitalis
2. between m. brachioradialis and m. pronator teres
3. between m. brachioradialis and m. flexor carpi radialis
4. between processus styloideus radii and os scaphoideum
5. through foveola radialis
6. first intermetacarpal space (of Guiot)
7. spatium palmare medium

In the palm it anastomoses with a. ulnaris
- continues as arcus palmaris profundus



Arteria radialis

- lateral continuation of arteria brachialis
- together with r. superficialis n. radialis

Course

1. from fossa cubitalis
2. between m. brachioradialis and m. pronator teres
3. between m. brachioradialis and m. flexor carpi radialis
4. between processus styloideus radii and os scaphoideum
5. through foveola radialis
6. first intermetacarpal space (of Guiot)
7. spatium palmare medium

In the palm it anastomoses with a. ulnaris

- continues as arcus palmaris profundus



Arteria radialis

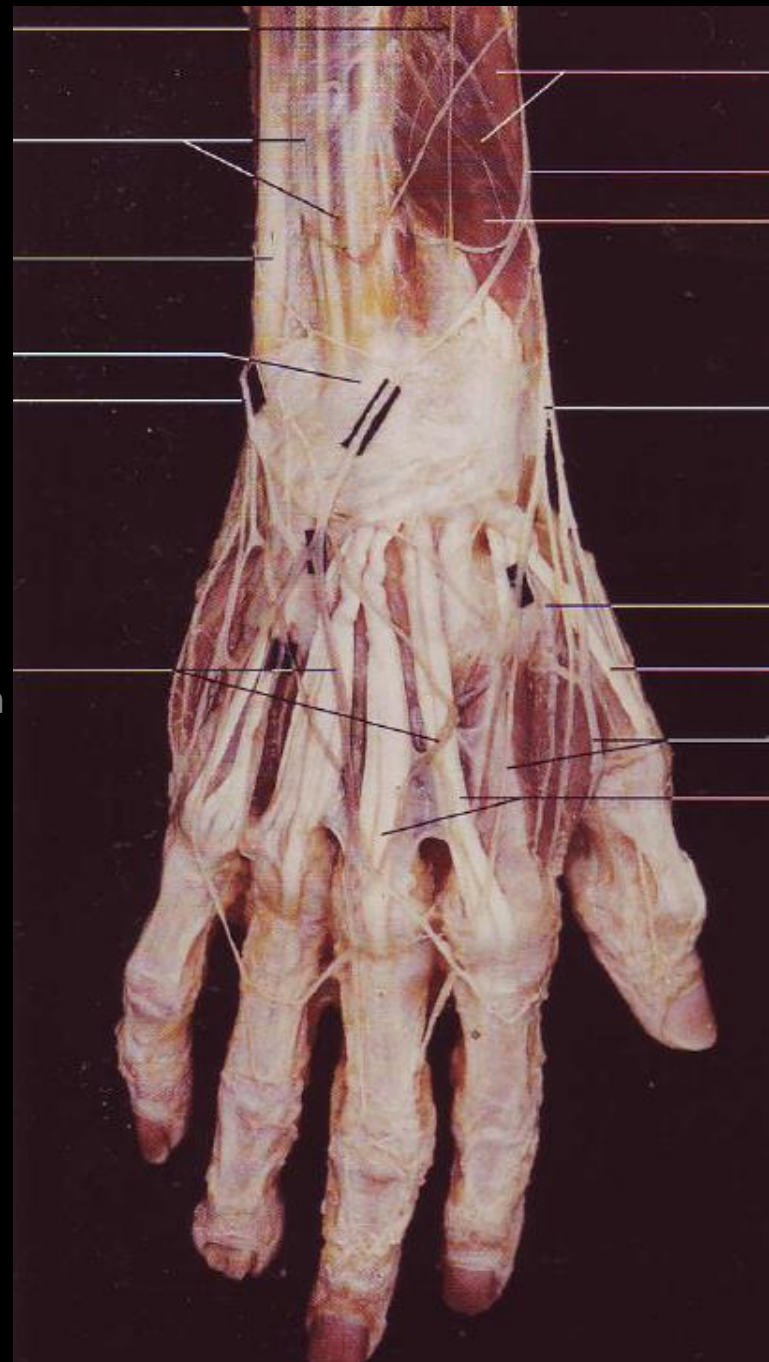
- lateral continuation of arteria brachialis
- together with r. superficialis n. radialis

Course

1. from fossa cubitalis
2. between m. brachioradialis and m. pronator teres
3. between m. brachioradialis and m. flexor carpi radialis
4. between processus styloideus radii and os scaphoideum
5. through foveola radialis
6. first intermetacarpal space (of Guiot)
7. spatium palmare medium

In the palm it anastomoses with a. ulnaris

- continues as arcus palmaris profundus



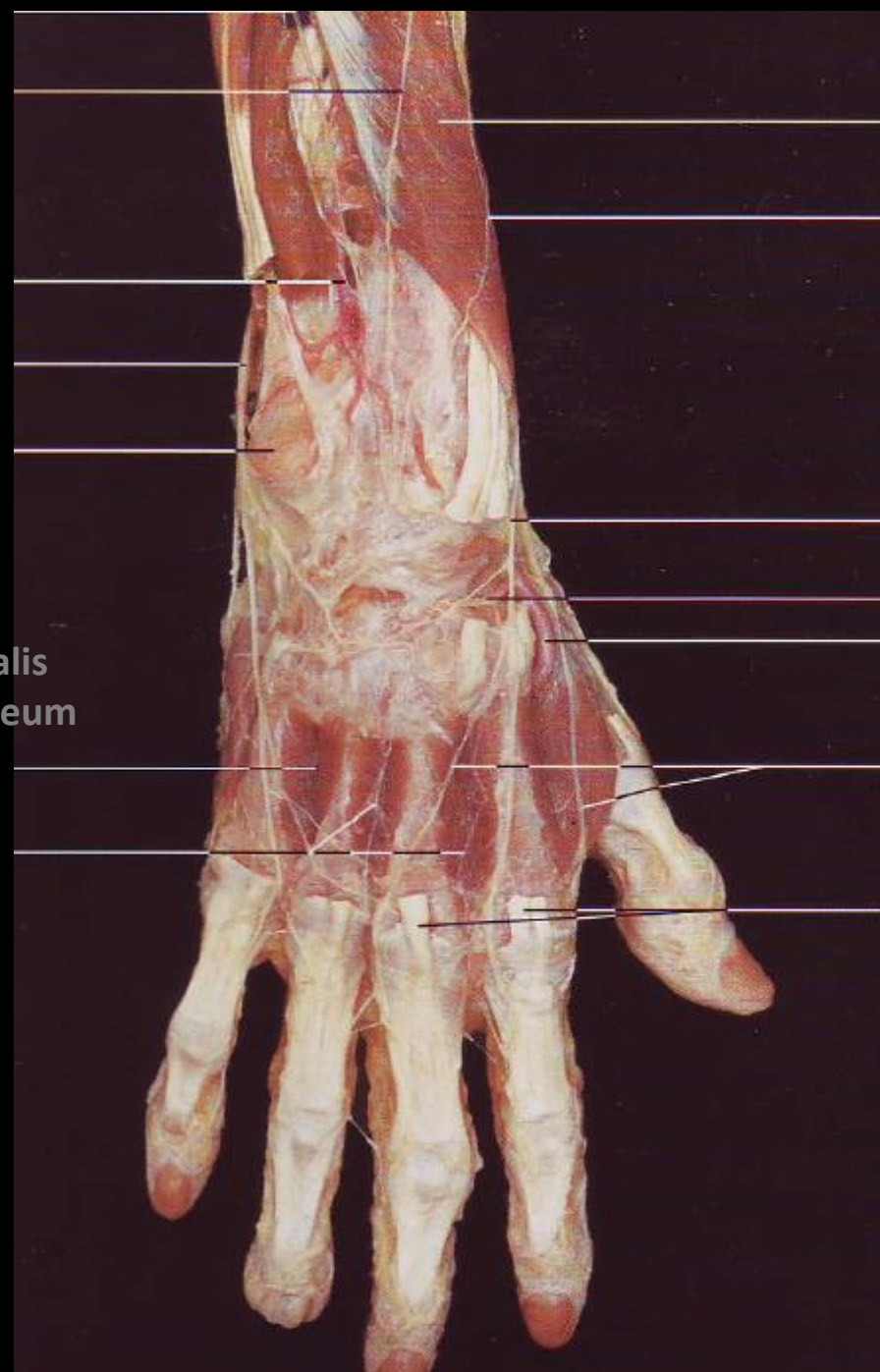
Arteria radialis

- lateral continuation of arteria brachialis
- together with r. superficialis n. radialis

Course

1. from fossa cubitalis
2. between m. brachioradialis and m. pronator teres
3. between m. brachioradialis and m. flexor carpi radialis
4. between processus styloideus radii and os scaphoideum
5. through foveola radialis
6. first intermetacarpal space (of Guiot)
7. spatium palmare medium

In the palm it anastomoses with a. ulnaris
- continues as arcus palmaris profundus



Arteria radialis

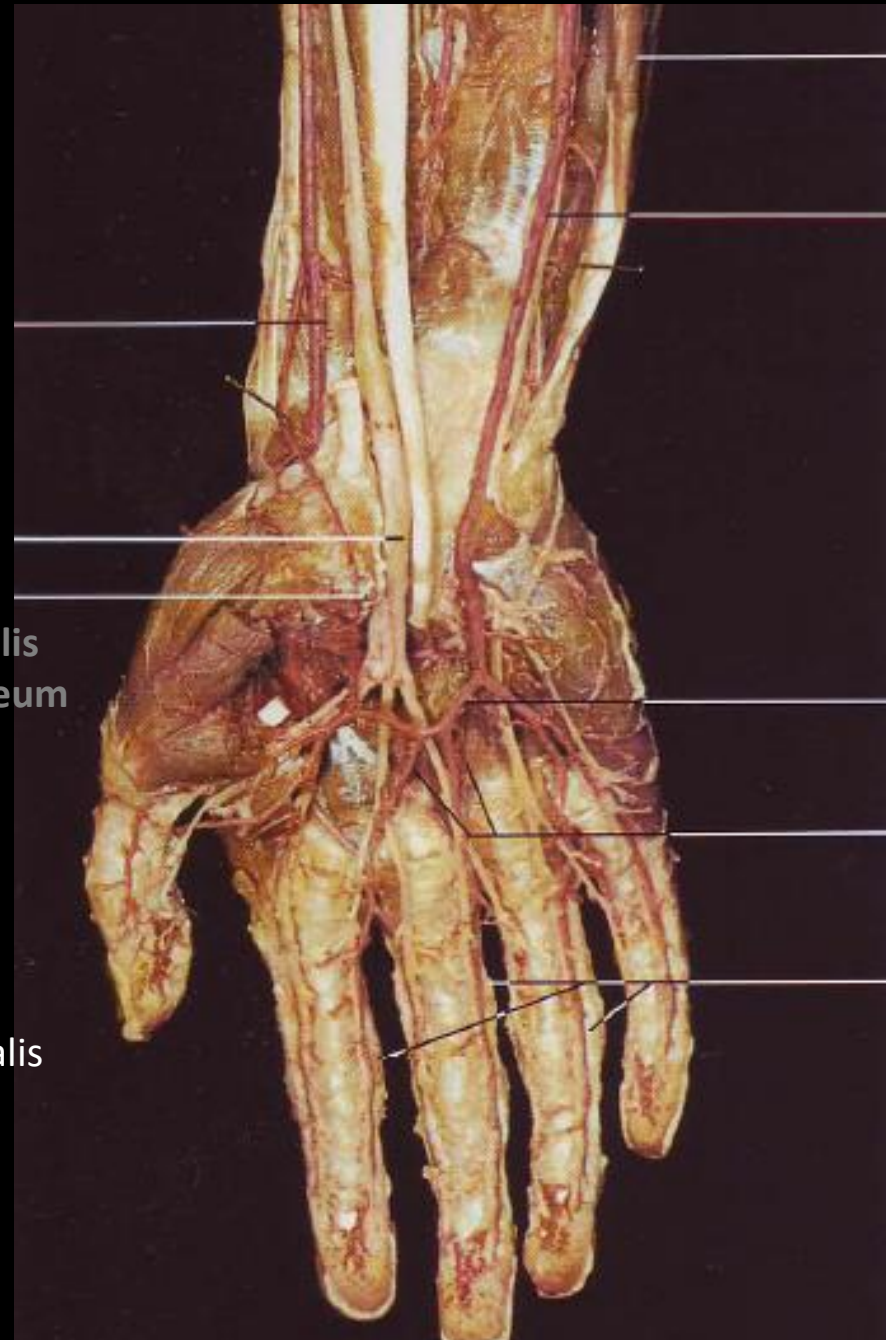
- lateral continuation of arteria brachialis
- together with r. superficialis n. radialis

Course

1. from fossa cubitalis
2. between m. brachioradialis and m. pronator teres
3. between m. brachioradialis and m. flexor carpi radialis
4. between processus styloideus radii and os scaphoideum
5. through foveola radialis
6. first intermetacarpal space (of Guiot)
7. spatium palmare medium

In the palm it anastomoses with a. ulnaris

- continues as arcus palmaris profundus
- its r. superficialis contributes to arcus palmaris superficialis



Arteria ulnaris

- **medial continuation of arteria brachialis**
- **together with n. ulnaris**

Course:

1. from **fossa cubitalis**
2. between m. flexor digitorum superficialis et profundus
3. between m. flexor digitorum superficialis and m. flexor carpi ulnaris
4. through **canalis ulnaris (of Guyon)**
5. **spatium palmare medium**

In the palm it anastomoses with a. radialis

- continues as **arcus palmaris superficialis**
- its r. profundus contributes to **arcus palmaris profundus**



Arteria ulnaris

- medial continuation of arteria brachialis
- together with n. ulnaris

Course:

1. from fossa cubitalis
2. between m. flexor digitorum superficialis et profundus
3. between m. flexor digitorum superficialis and m. flexor carpi ulnaris
4. through canalis ulnaris (of Guyon)
5. spatium palmare medium

In the palm it anastomoses with a. radialis

- continues as arcus palmaris superficialis
- its r. profundus contributes to arcus palmaris profundus



Arteria ulnaris

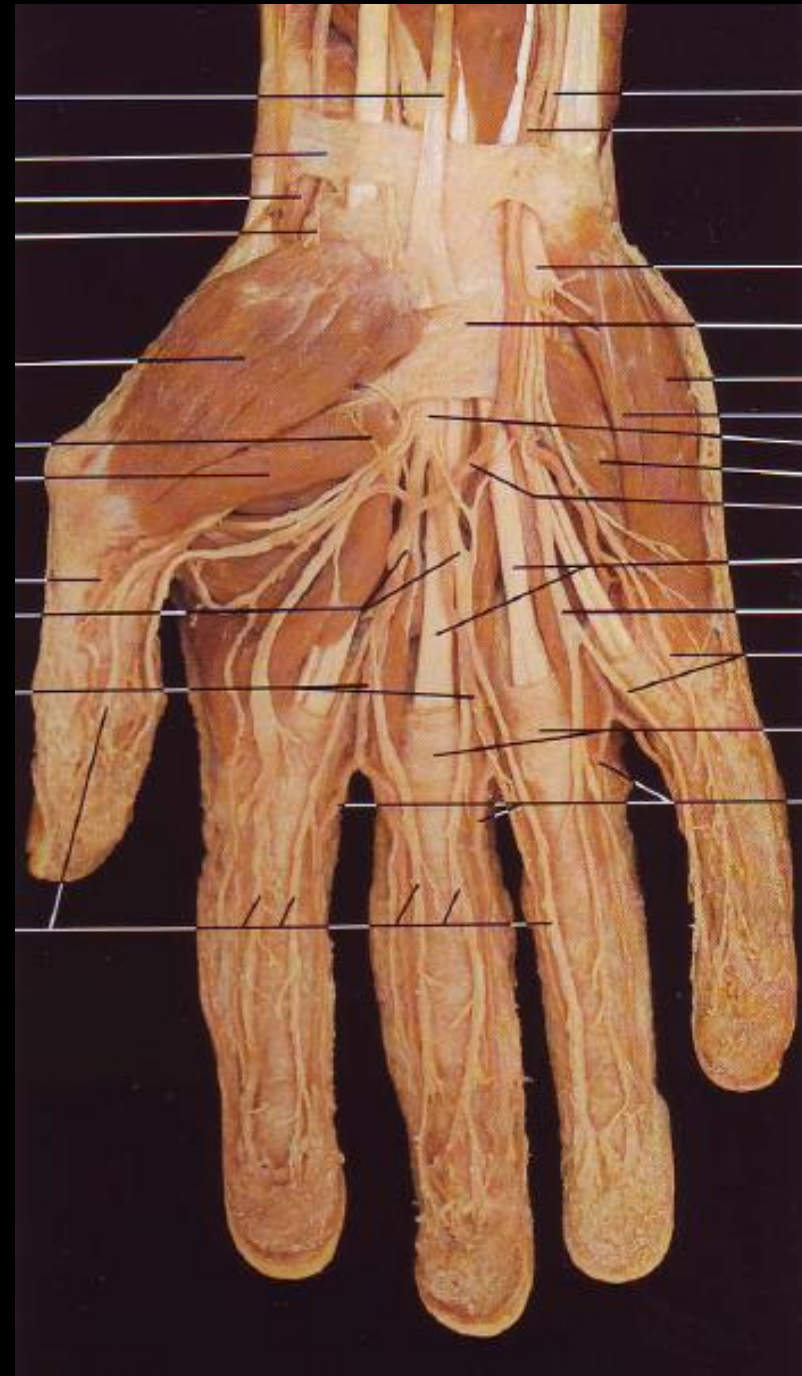
- medial continuation of arteria brachialis
- together with n. ulnaris

Course:

1. from fossa cubitalis
2. between m. flexor digitorum superficialis et profundus
3. between m. flexor digitorum superficialis and m. flexor carpi ulnaris
4. through canalis ulnaris (of Guyon)
5. spatium palmare medium

In the palm it anastomoses with a. radialis

- continues as arcus palmaris superficialis
- its r. profundus contributes to arcus palmaris profundus



Veins of upper limb

Deep veins:

- follow arteries and are doubled as high as fossa axillaris

Venae radiales

Venae ulnares

Venae brachiales

Vena axillaris

Vena subclavia

Superficialis veins:

Vena basilica

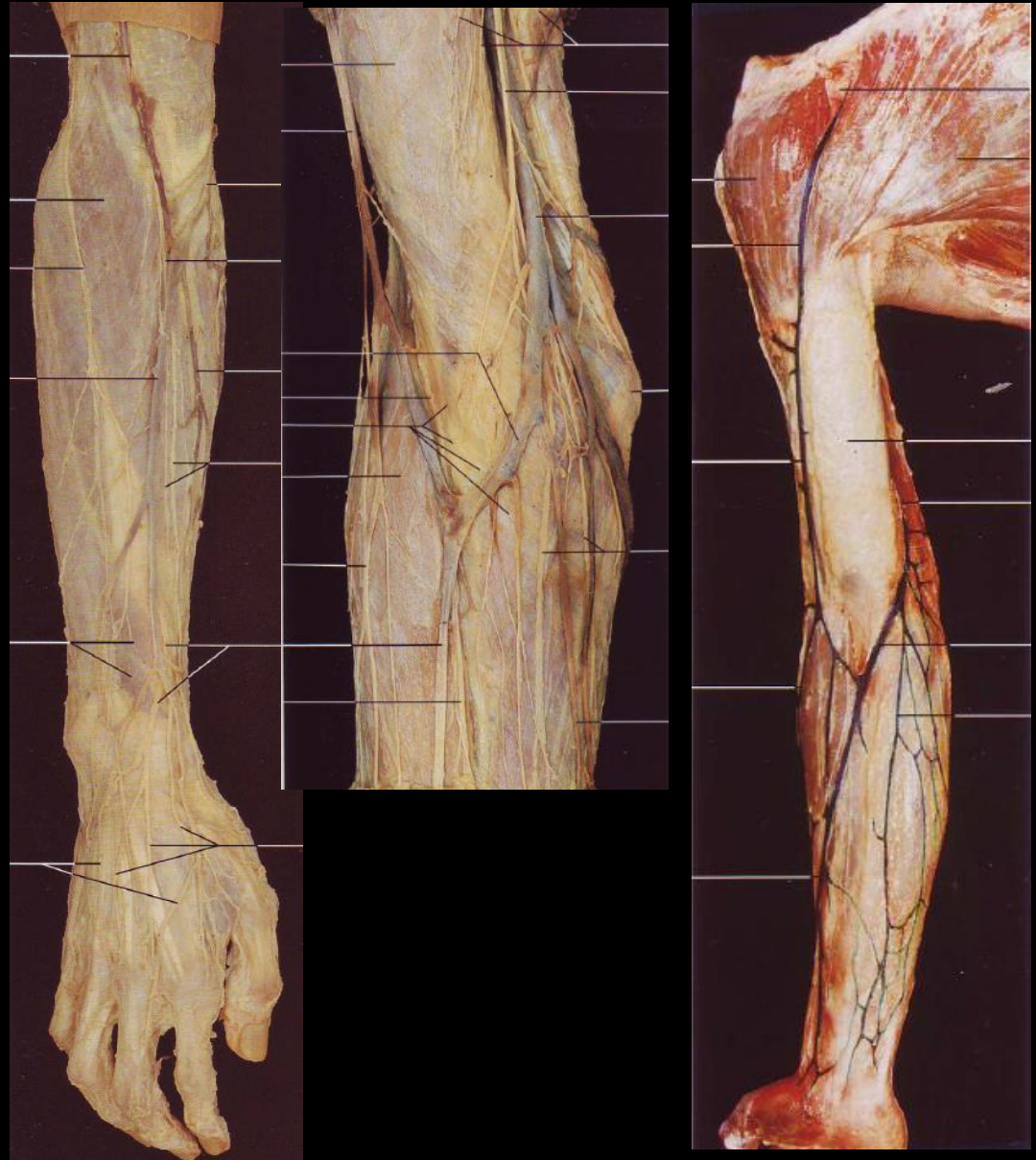
- along medial side into v. brachialis
- with n. cutaneus antebrachii medialis

Vena cephalica

- along lateral side do v. axillaris
- with s n. cutaneus antebrachii lateralis

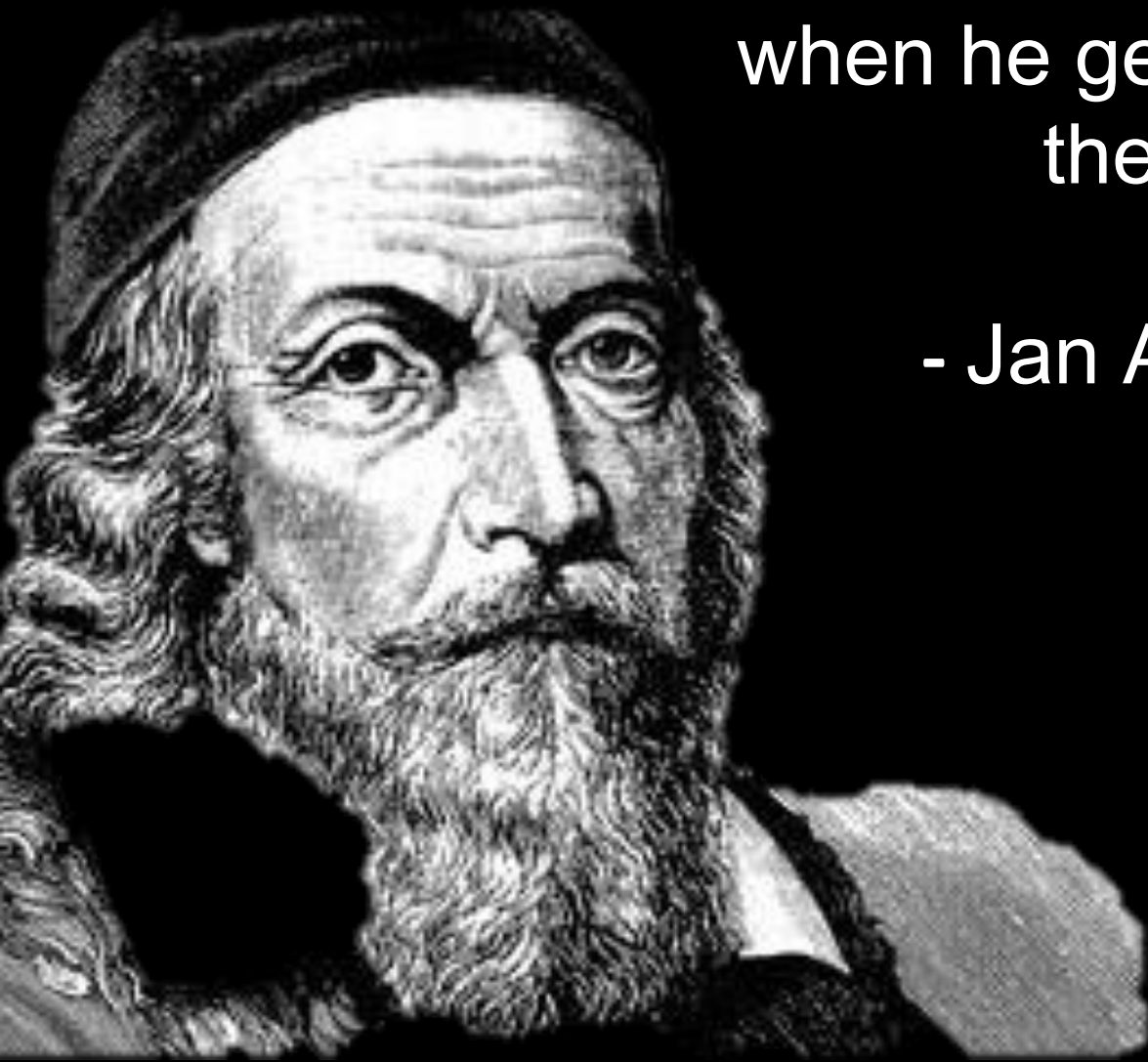
Vena mediana cubiti

Vena mediana antebrachii



„When the teacher tells the pupils something,
they will forget. When he shows them, they
will rather remember. But only
when he gets them involved,
they will understand“

- Jan Amos Komenský -



Nerves of upper limb

Plexus brachialis

1. Truncus superior
2. Truncus medius
3. Truncus inferior

Course:
through fissura scalenorum

Plexus brachialis

1. Fasciculus medialis
2. Fasciculus lateralis
3. Fasciculus posterior

Course:
within fossa axillaris around
a. axillaris



Nerves of upper limb

Plexus brachialis

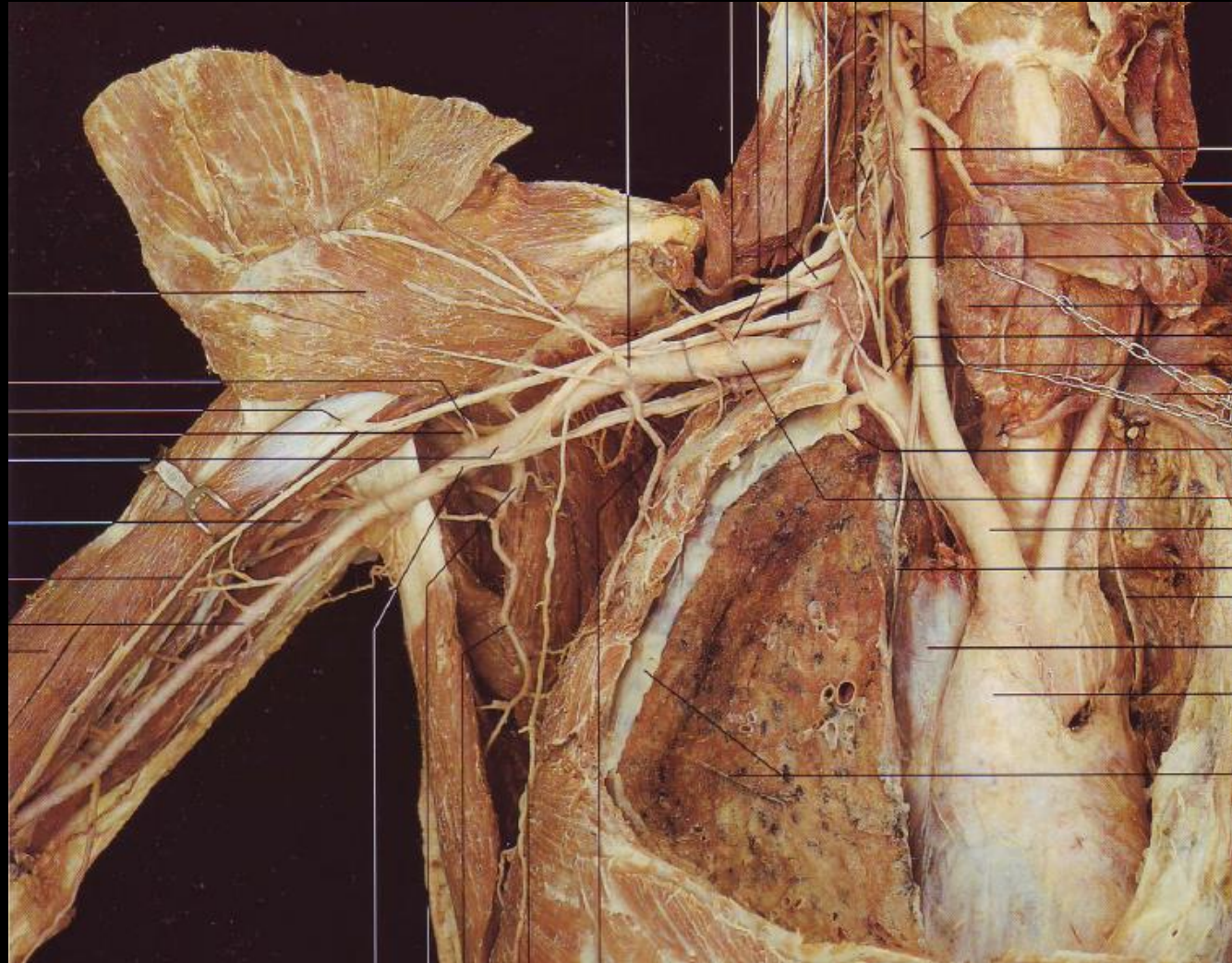
– **pars supraclavicularis:**

Nervus thoracicus longus
Nervus suprascapularis
Nervi pectorales
Nervus thoracodorsalis
Nervus dorsalis scapulae
Nervus subclavius

Plexus brachialis

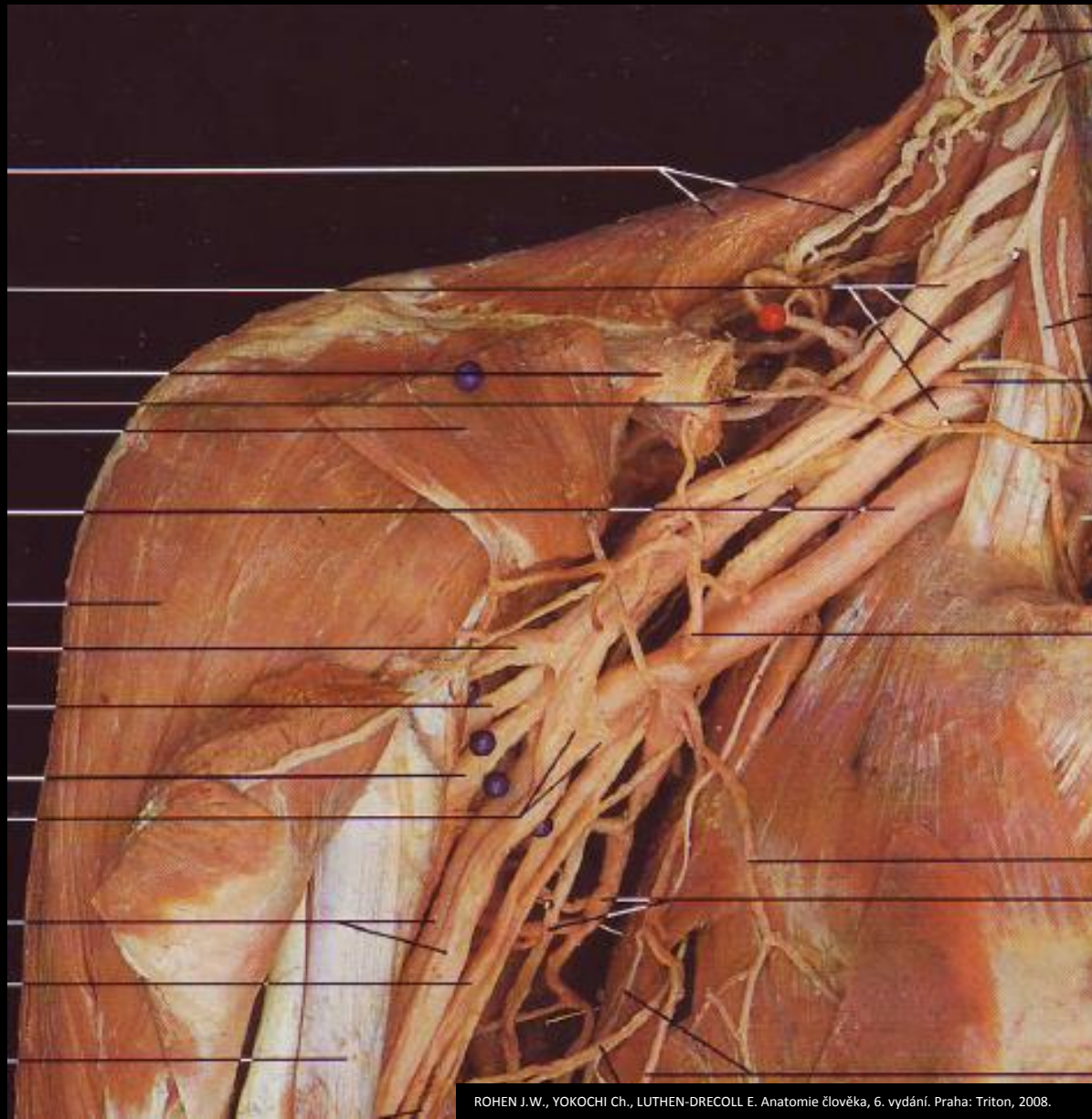
– **pars infraclavicularis:**

Nervus musculocutaneus
Nervus medianus
Nervus ulnaris
Nervus radialis
Nervus axillaris



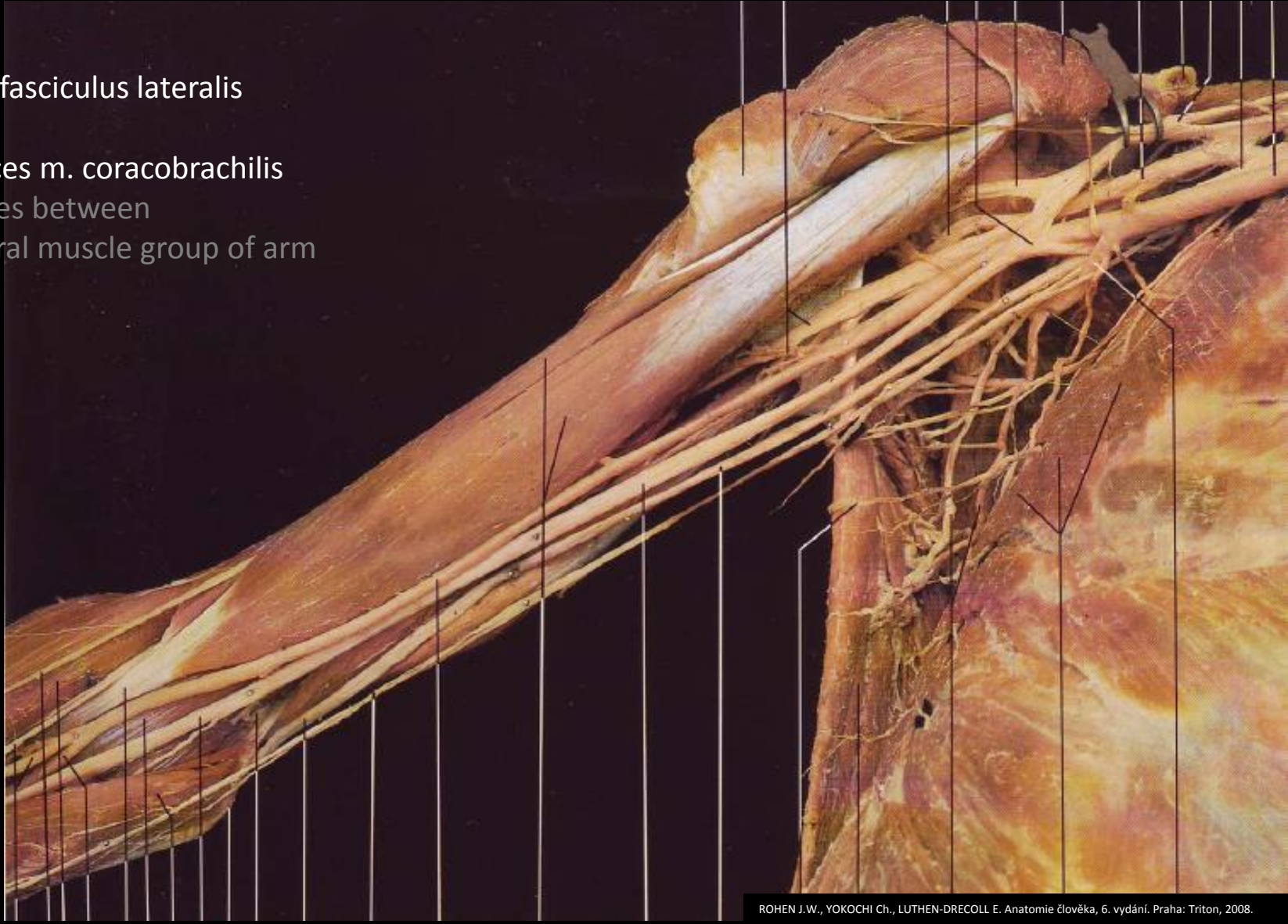
Plexus brachialis – pars supraclavicularis

- 1. Nervus thoracicus longus**
 - descends on m. serratus anterior with vasa thoracica lateralia
- 2. Nervus suprascapularis**
 - with s vasa suprascapularia
 - through incisura scapulae under lig. transversum scapulae superius
 - through incisura spinoglenoidalis under lig. transversum scapulae inferius
- 3. Nervus pectoralis medialis et lateralis**
 - deep in trigonum clavipectorale
 - with rr. pectorales from a. trhoracoacromialis
- 4. Nervus thoracodorsalis**
 - with vasa thoracodorsalia
- 5. Nervus dorsalis scapulae**
 - with vasa dorsalia scapulae
- 6. Nervus subclavius**



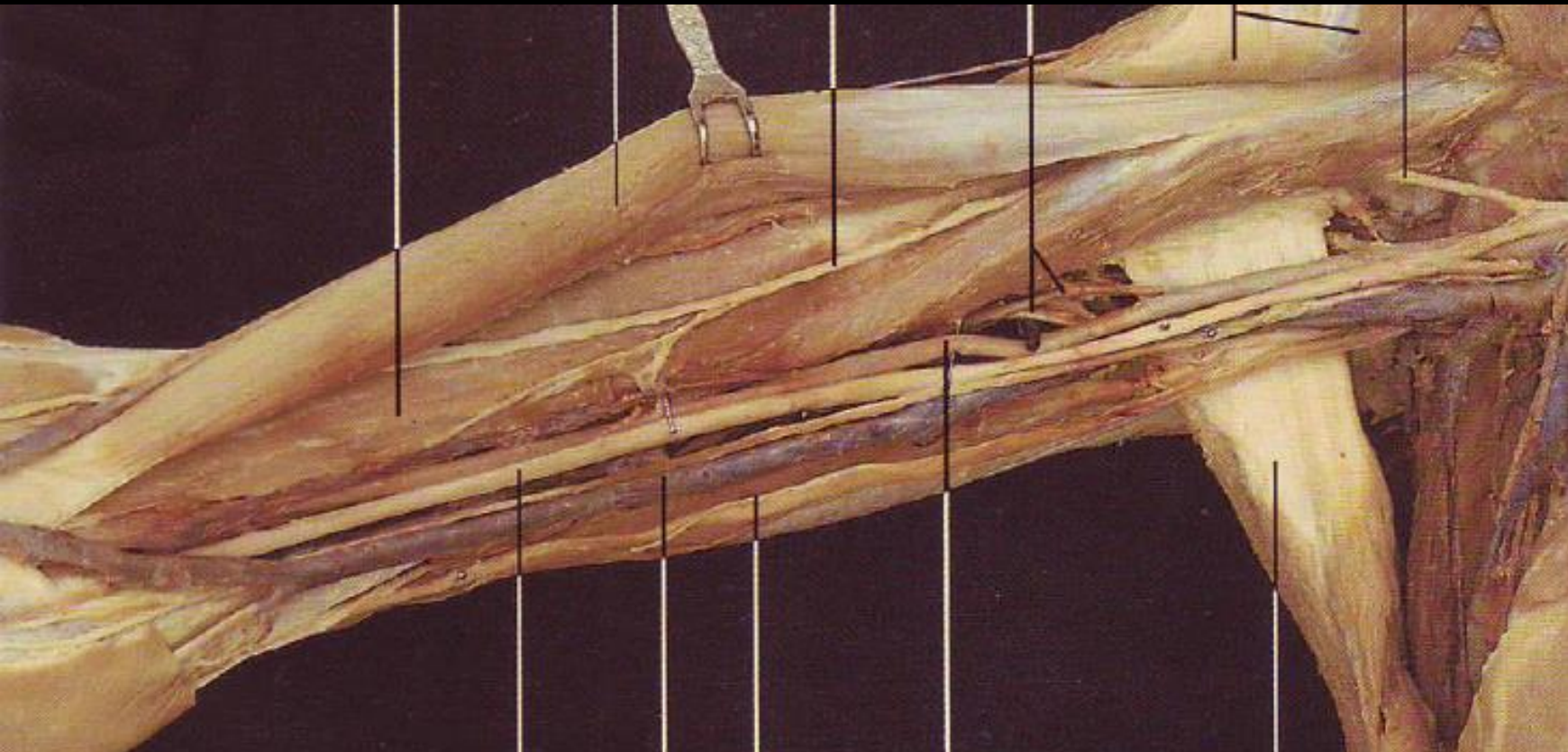
Nervus musculocutaneus

- from fasciculus lateralis
- 1. pierces m. coracobrachialis
- 2. passes between ventral muscle group of arm



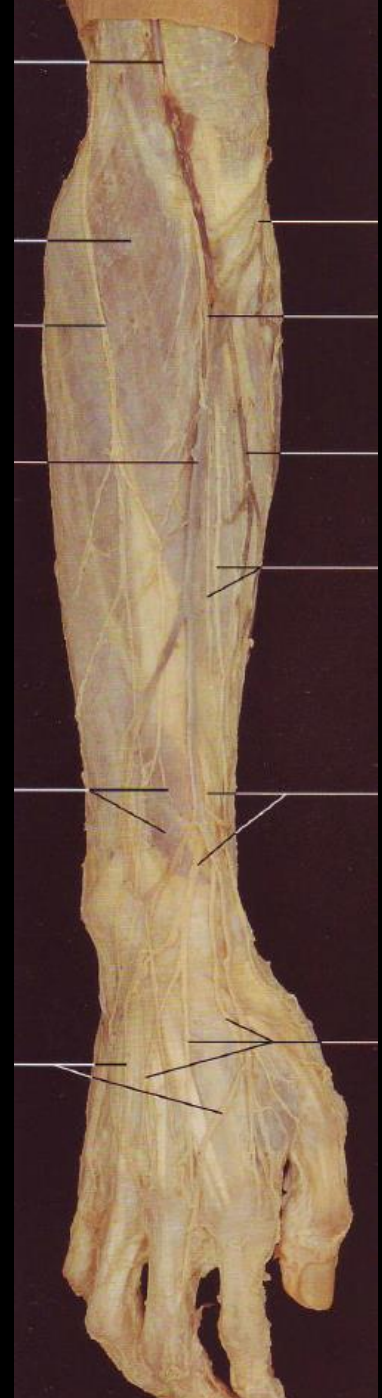
Nervus musculocutaneus

- from fasciculus lateralis
- 1. pierces m. coracobrachialis
- 2. passes between ventral muscle group of arm
- 3. continues into fossa cubitalis
- 4. along lateral side of forearm



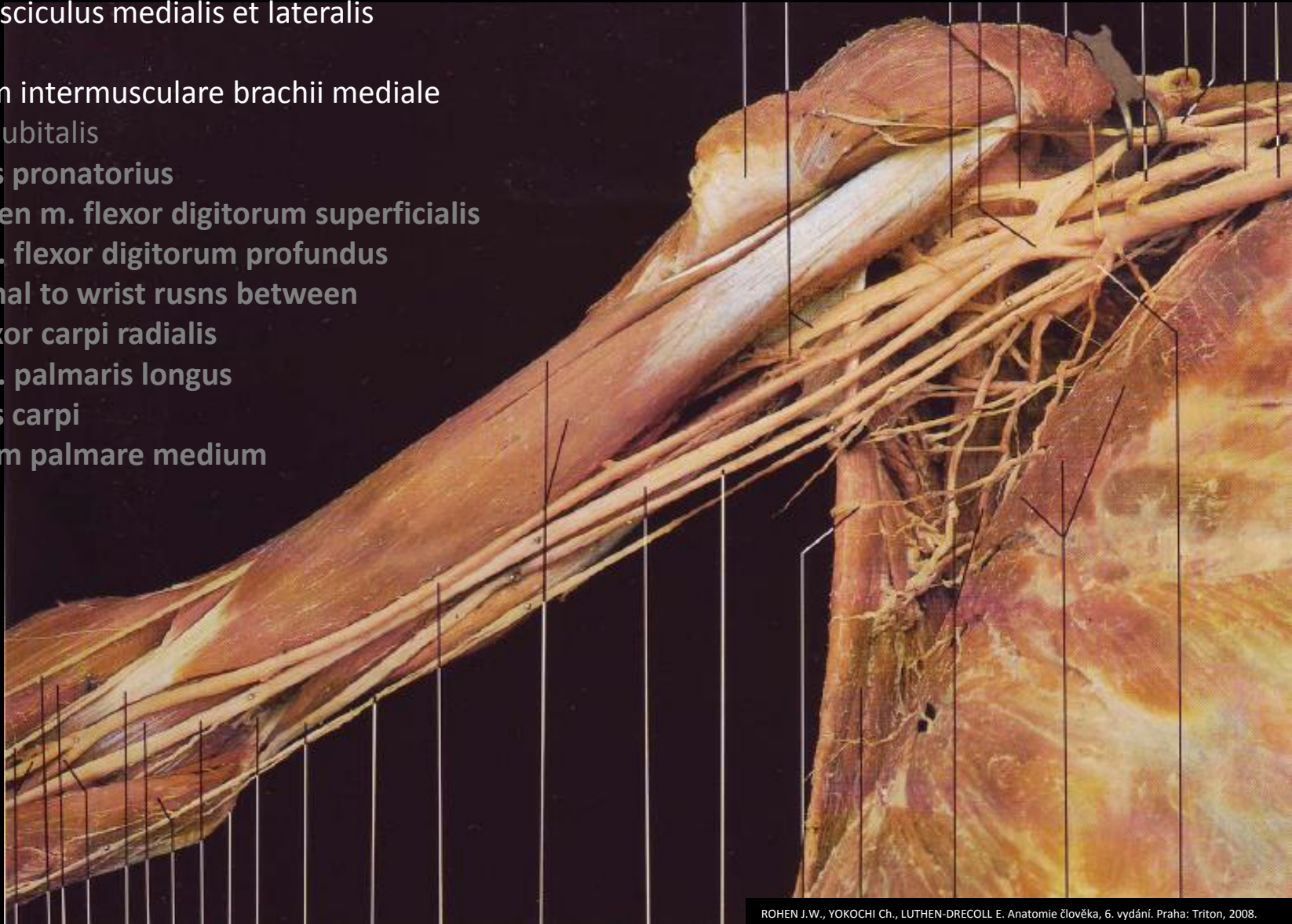
Nervus musculocutaneus

- from fasciculus lateralis
- 1. pierces m. coracobrachialis
- 2. passes between ventral muscle group of arm
- 3. continues into fossa cubitalis
- 4. along lateral side of forearm



Nervus medianus

- from fasciculus medialis et lateralis
- 1. septum intermusculare brachii mediale
- 2. fossa cubitalis
- 3. canalis pronatorius
- 4. between m. flexor digitorum superficialis and m. flexor digitorum profundus
- 5. proximal to wrist runs between m. flexor carpi radialis and m. palmaris longus
- 6. canalis carpi
- 7. spatium palmare medium



Nervus medianus

- from fasciculus medialis et lateralis
- 1. septum intermusculare brachii mediale
- 2. fossa cubitalis
- 3. canalis pronatorius
- 4. between m. flexor digitorum superficialis and m. flexor digitorum profundus
- 5. proximal to wrist runs between m. flexor carpi radialis and m. palmaris longus
- 6. canalis carpi
- 7. spatium palmare medium



Nervus medianus

- from fasciculus medialis et lateralis
- 1. septum intermusculare brachii mediale
- 2. fossa cubitalis
- 3. canalis pronatorius**
- 4. between m. flexor digitorum superficialis and m. flexor digitorum profundus
- 5. proximal to wrist runs between m. flexor carpi radialis and m. palmaris longus
- 6. canalis carpi
- 7. spatium palmare medium



Nervus medianus

- from fasciculus medialis et lateralis
- 1. septum intermusculare brachii mediale
- 2. fossa cubitalis
- 3. canalis pronatorius**
- 4. between m. flexor digitorum superficialis and m. flexor digitorum profundus**
- 5. proximal to wrist runs between m. flexor carpi radialis and m. palmaris longus
- 6. canalis carpi
- 7. spatium palmare medium



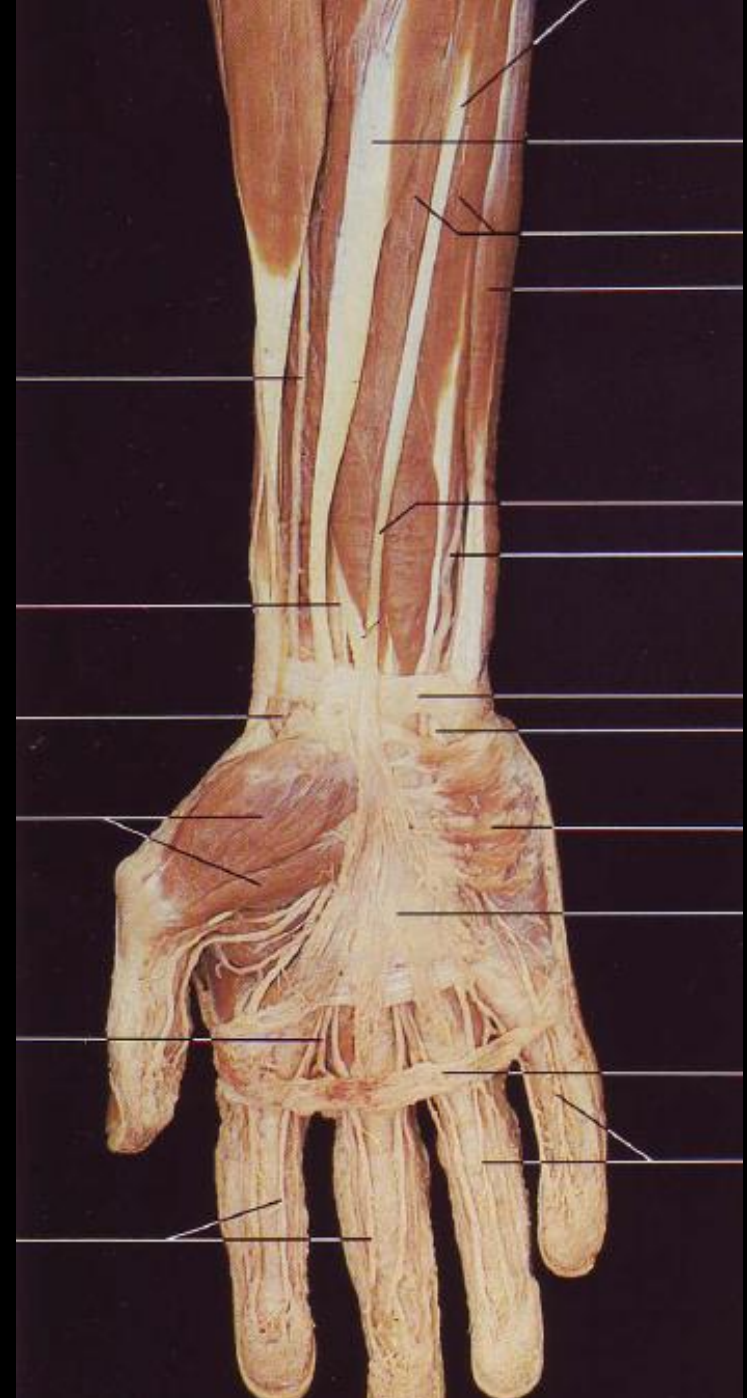
Nervus medianus

- from fasciculus medialis et lateralis
- 1. septum intermusculare brachii mediale
- 2. fossa cubitalis
- 3. canalis pronatorius
- 4. **between m. flexor digitorum superficialis and m. flexor digitorum profundus**
- 5. proximal to wrist runs between m. flexor carpi radialis and m. palmaris longus
- 6. canalis carpi
- 7. spatium palmare medium



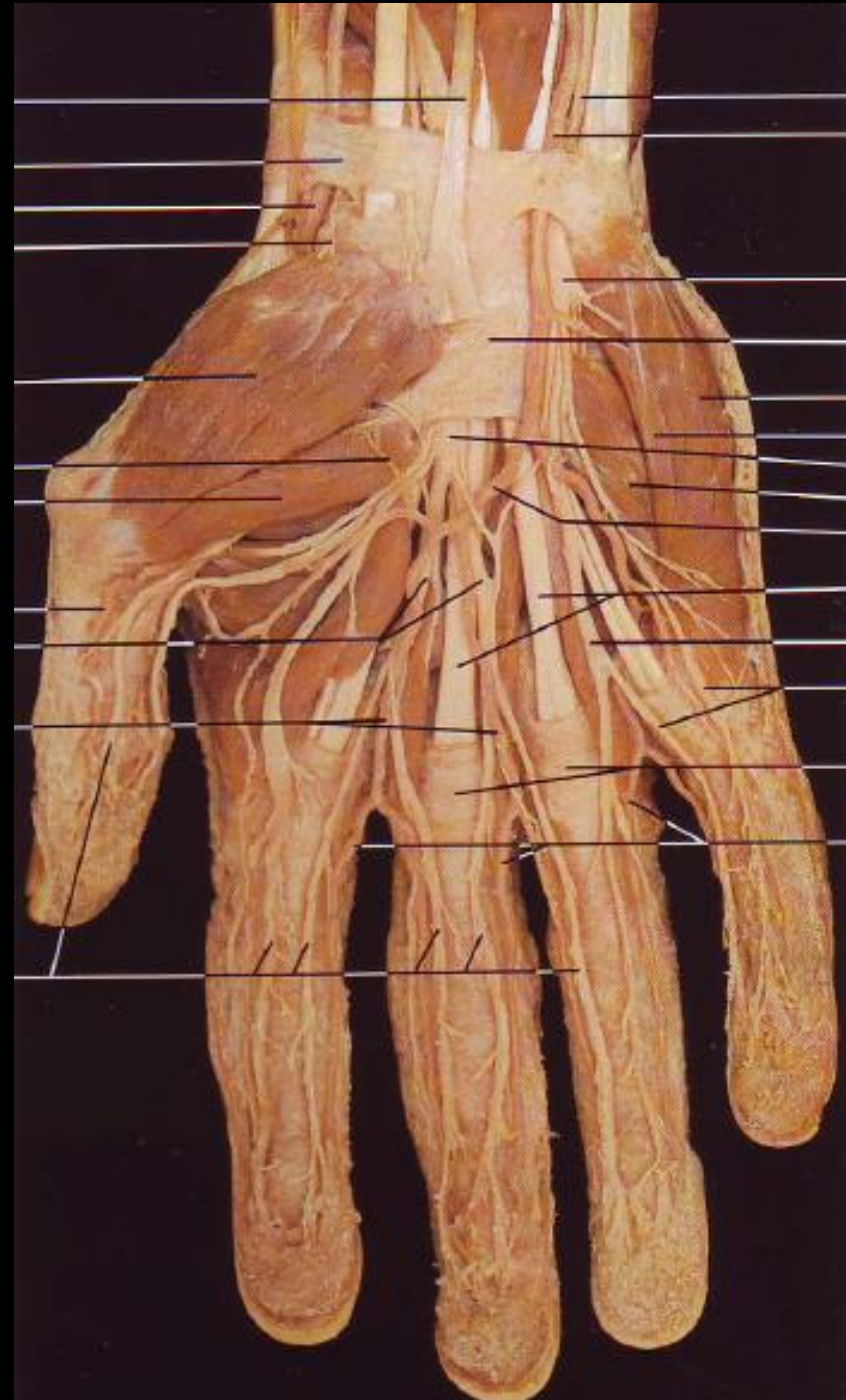
Nervus medianus

- from fasciculus medialis et lateralis
- 1. septum intermusculare brachii mediale
- 2. fossa cubitalis
- 3. **canalis pronatorius**
- 4. **between m. flexor digitorum superficialis and m. flexor digitorum profundus**
- 5. **proximal to wrist runs between m. flexor carpi radialis and m. palmaris longus**
- 6. **canalis carpi**
- 7. **spatium palmare medium**



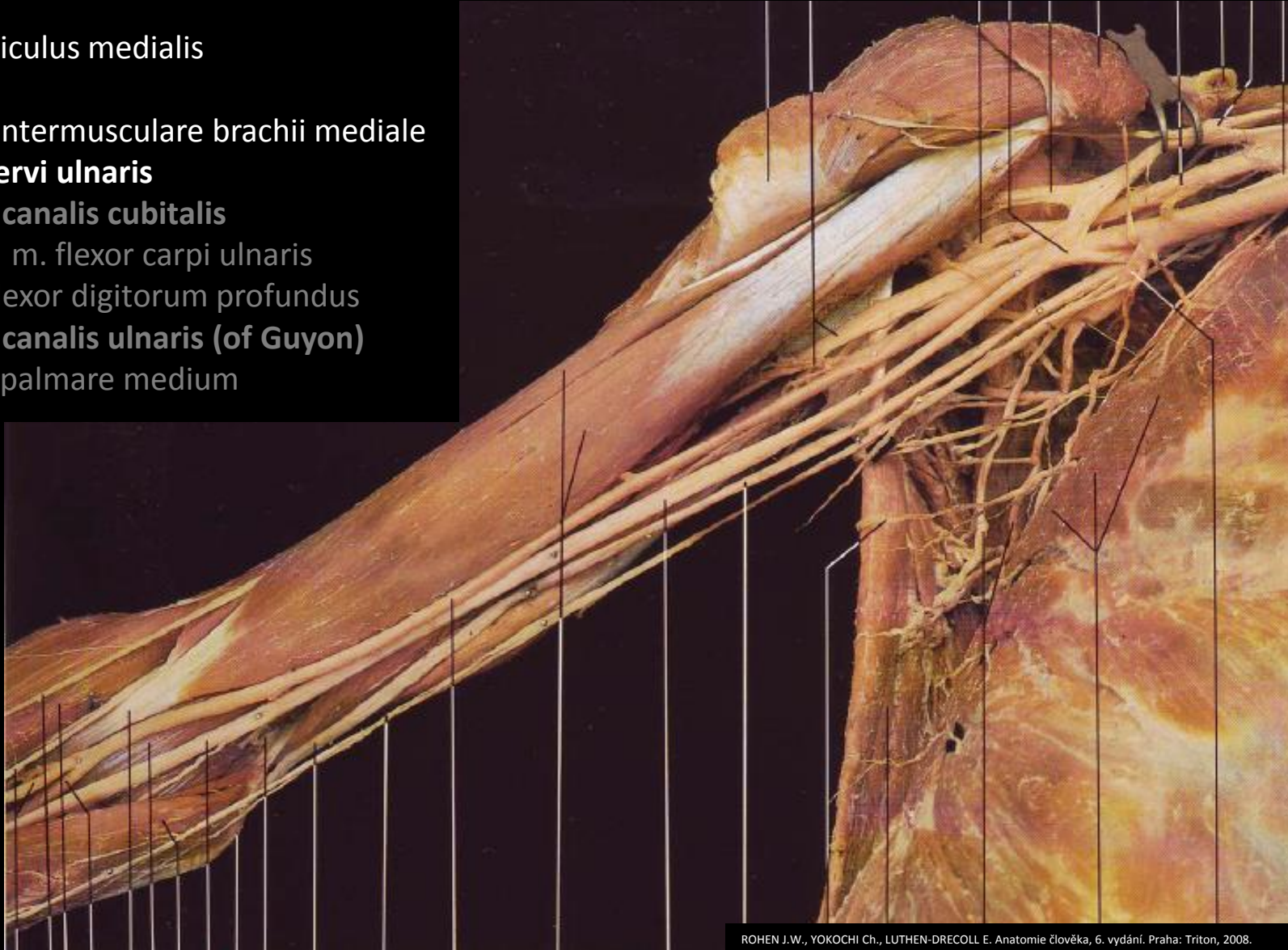
Nervus medianus

- from fasciculus medialis et lateralis
- 1. septum intermusculare brachii mediale
- 2. fossa cubitalis
- 3. **canalis pronatorius**
- 4. **between m. flexor digitorum superficialis and m. flexor digitorum profundus**
- 5. **proximal to wrist runs between m. flexor carpi radialis and m. palmaris longus**
- 6. **canalis carpi**
- 7. **spatium palmare medium**



Nervus ulnaris

- from fasciculus medialis
- 1. septum intermusculare brachii mediale
- 2. **sulcus nervi ulnaris**
- 3. **through canalis cubitalis**
- 4. between m. flexor carpi ulnaris and m. flexor digitorum profundus
- 5. **through canalis ulnaris (of Guyon)**
- 6. spatium palmare medium



Nervus ulnaris

- from fasciculus medialis
- 1. septum intermusculare brachii mediale
- 2. **sulcus nervi ulnaris**
- 3. **through canalis cubitalis**
- 4. between m. flexor carpi ulnaris and m. flexor digitorum profundus
- 5. **through canalis ulnaris (of Guyon)**
- 6. spatium palmare medium



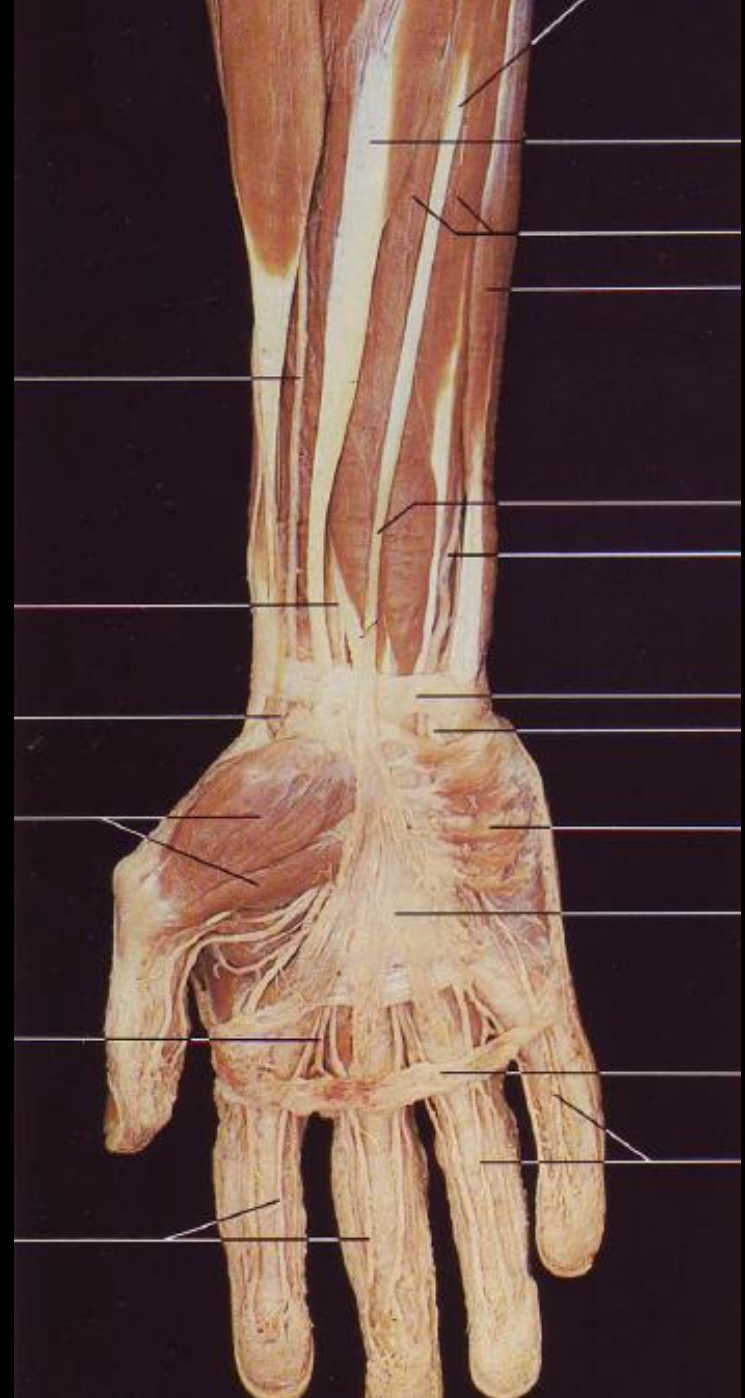
Nervus ulnaris

- from fasciculus medialis
- 1. septum intermusculare brachii mediale
- 2. **sulcus nervi ulnaris**
- 3. **through canalis cubitalis**
- 4. between m. flexor carpi ulnaris and m. flexor digitorum profundus
- 5. **through canalis ulnaris (of Guyon)**
- 6. spatium palmare medium



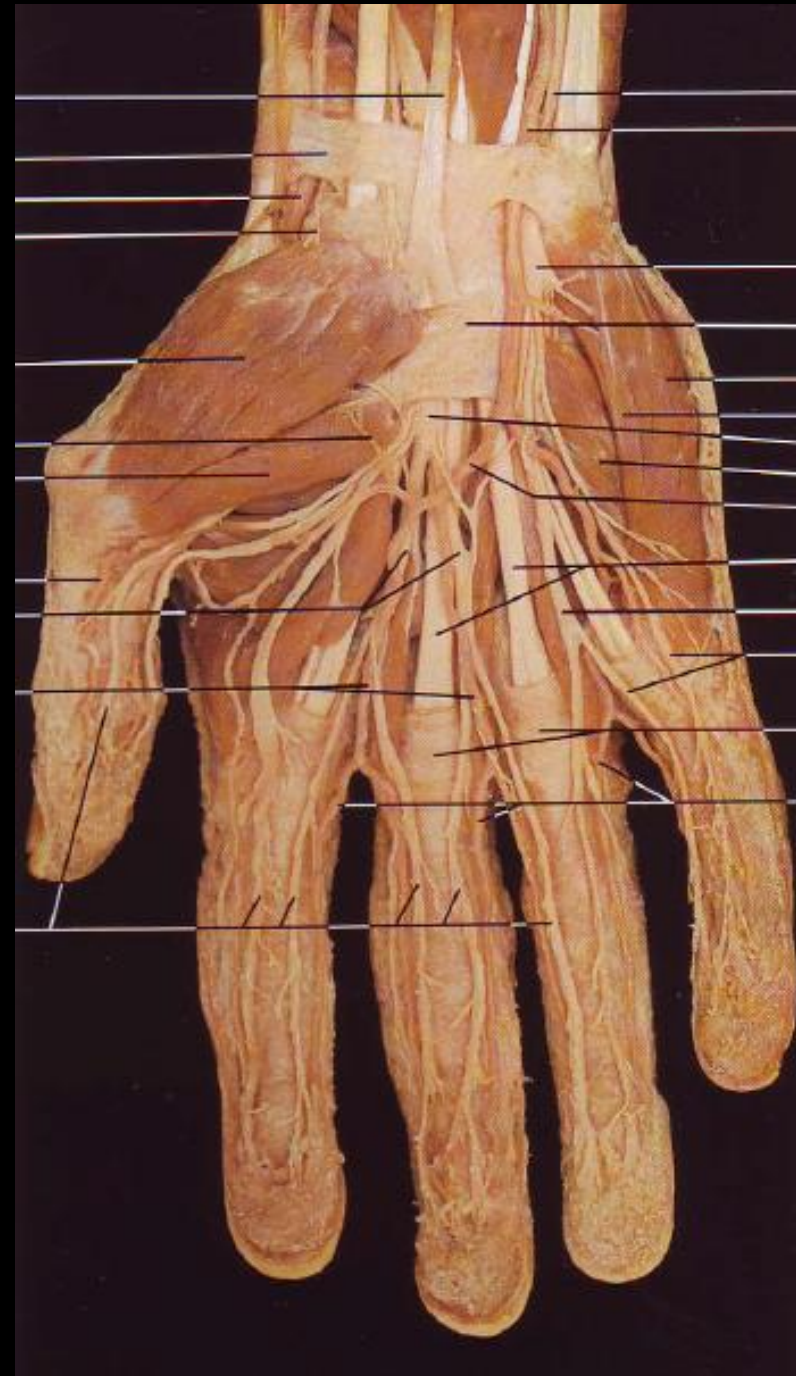
Nervus ulnaris

- from fasciculus medialis
- 1. septum intermusculare brachii mediale
- 2. **sulcus nervi ulnaris**
- 3. **through canalis cubitalis**
- 4. between m. flexor carpi ulnaris and m. flexor digitorum profundus
- 5. **through canalis ulnaris (of Guyon)**
- 6. spatium palmare medium



Nervus ulnaris

- from fasciculus medialis
- 1. septum intermusculare brachii mediale
- 2. **sulcus nervi ulnaris**
- 3. **through canalis cubitalis**
- 4. between m. flexor carpi ulnaris and m. flexor digitorum profundus
- 5. **through canalis ulnaris (of Guyon)**
- 6. spatium palmare medium

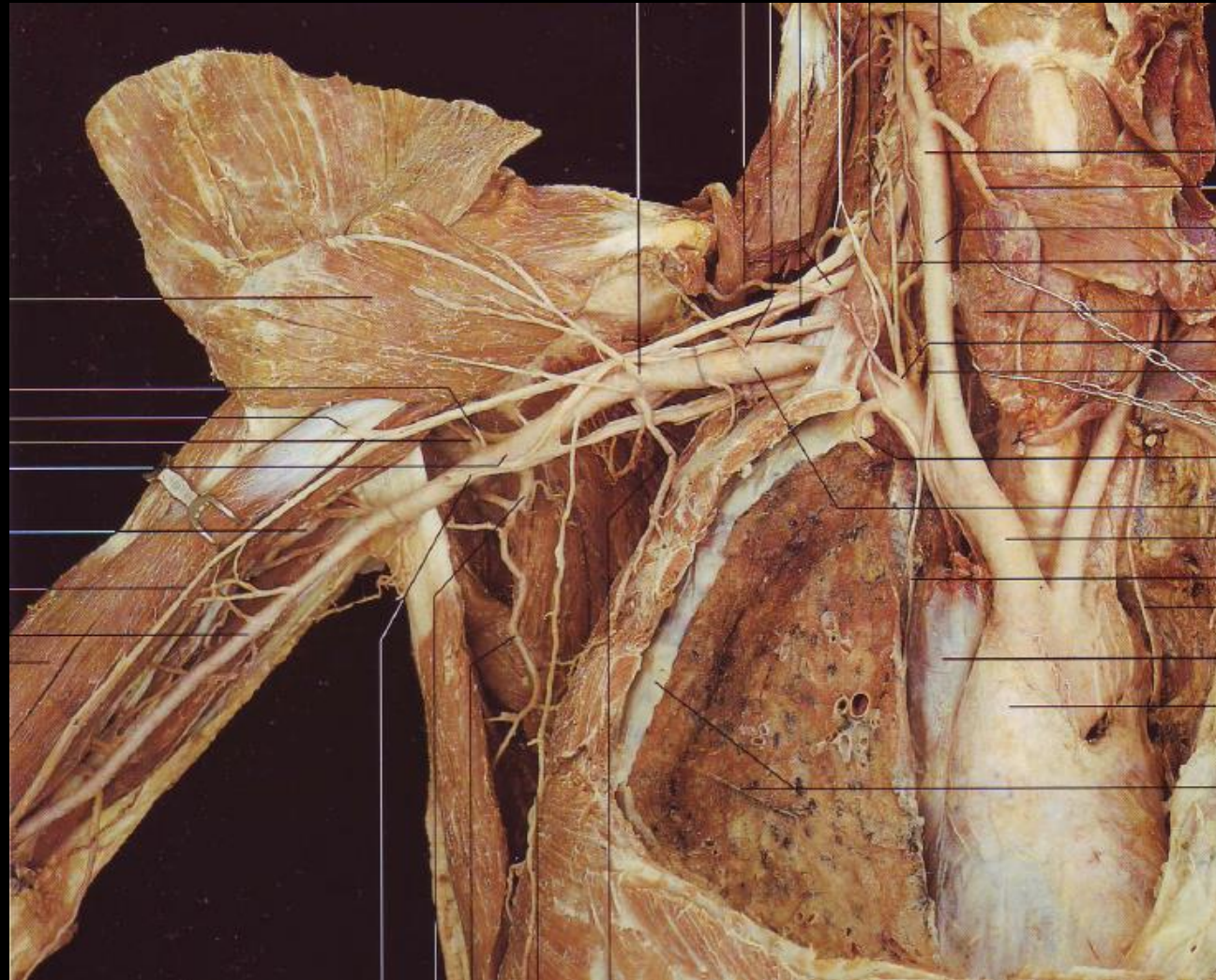


Nervus axillaris

- from fasciculus posterior

foramen humerotricipitale

- with vasa circumflexa
humeri posteriora

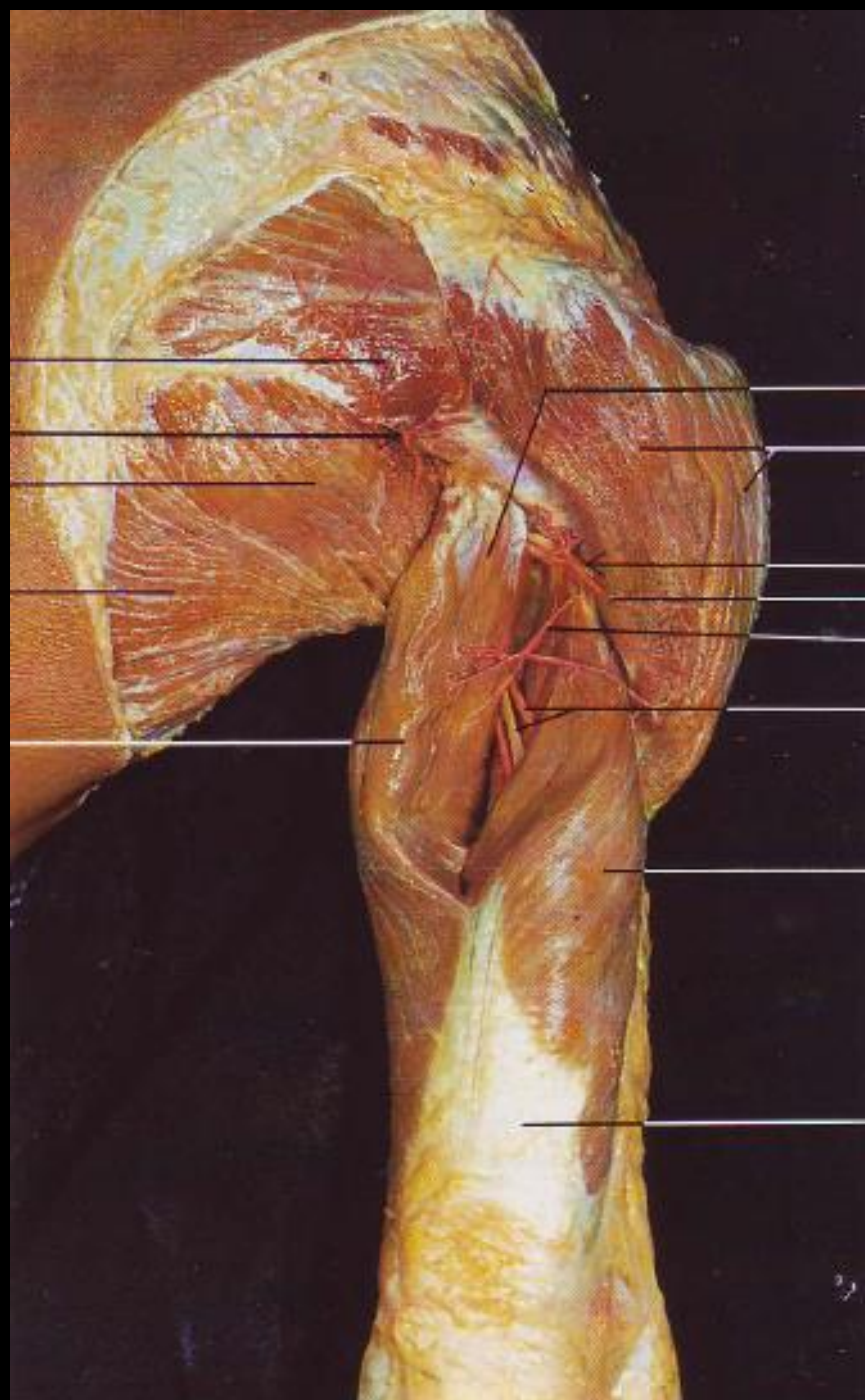


Nervus axillaris

- from fasciculus posterior

foramen humerotricipitale

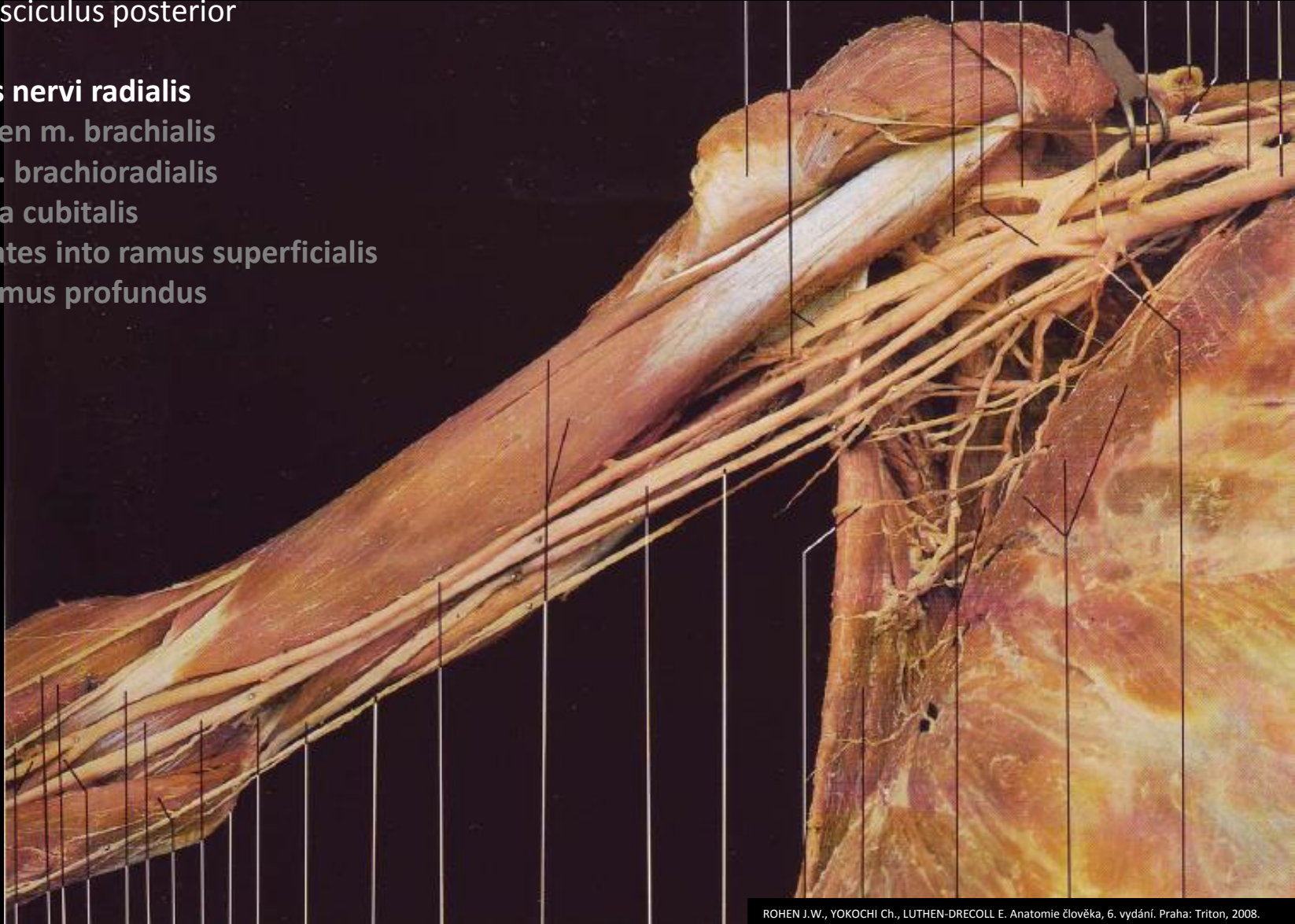
- with vasa circumflexa
humeri posteriora



Nervus radialis

- from fasciculus posterior

1. **canalis nervi radialis**
2. **between m. brachialis and m. brachioradialis**
3. **in fossa cubitalis bifurcates into ramus superficialis and ramus profundus**



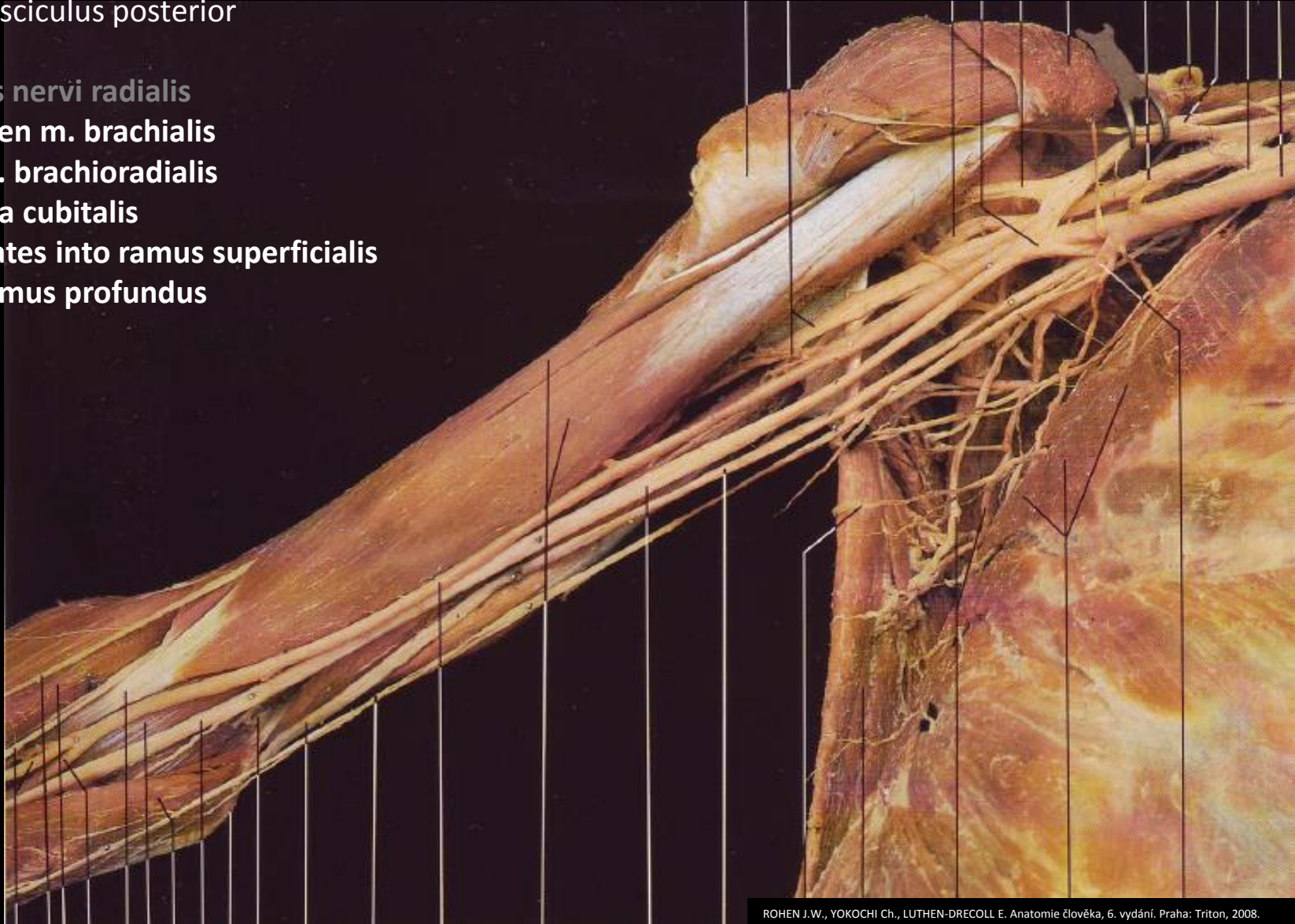
Nervus radialis

- from fasciculus posterior
- 1. **canalis nervi radialis**
- 2. **between m. brachialis and m. brachioradialis**
- 3. **in fossa cubitalis bifurcates into ramus superficialis and ramus profundus**



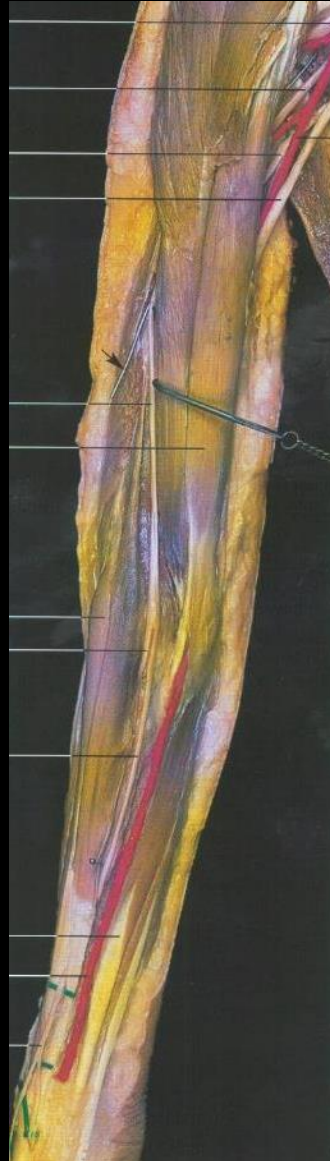
Nervus radialis

- from fasciculus posterior
- 1. **canalis nervi radialis**
- 2. **between m. brachialis and m. brachioradialis**
- 3. **in fossa cubitalis bifurcates into ramus superficialis and ramus profundus**



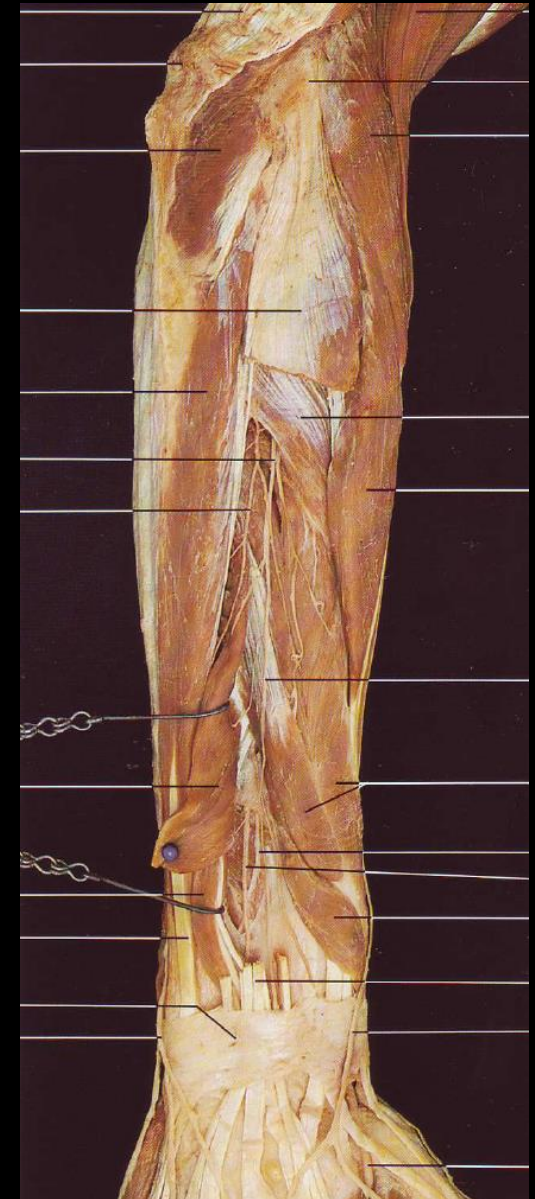
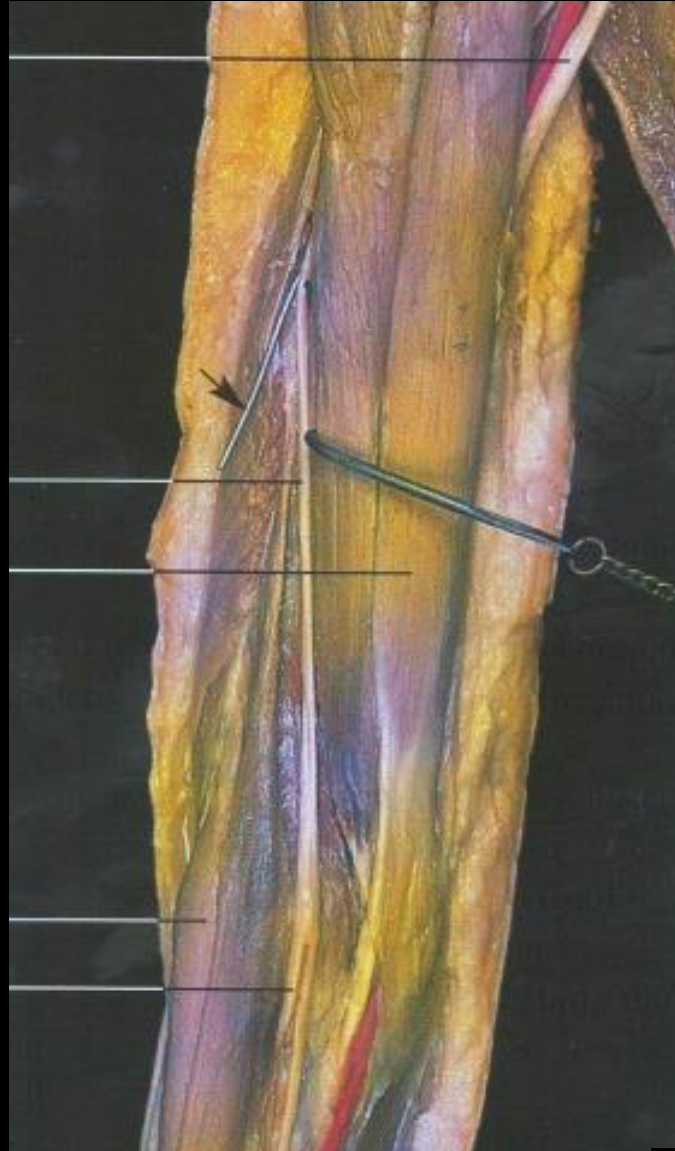
Nervus radialis

- from fasciculus posterior
- 1. canalis nervi radialis
- 2. between m. brachialis and m. brachioradialis
- 3. in fossa cubitalis bifurcates into ramus superficialis and ramus profundus



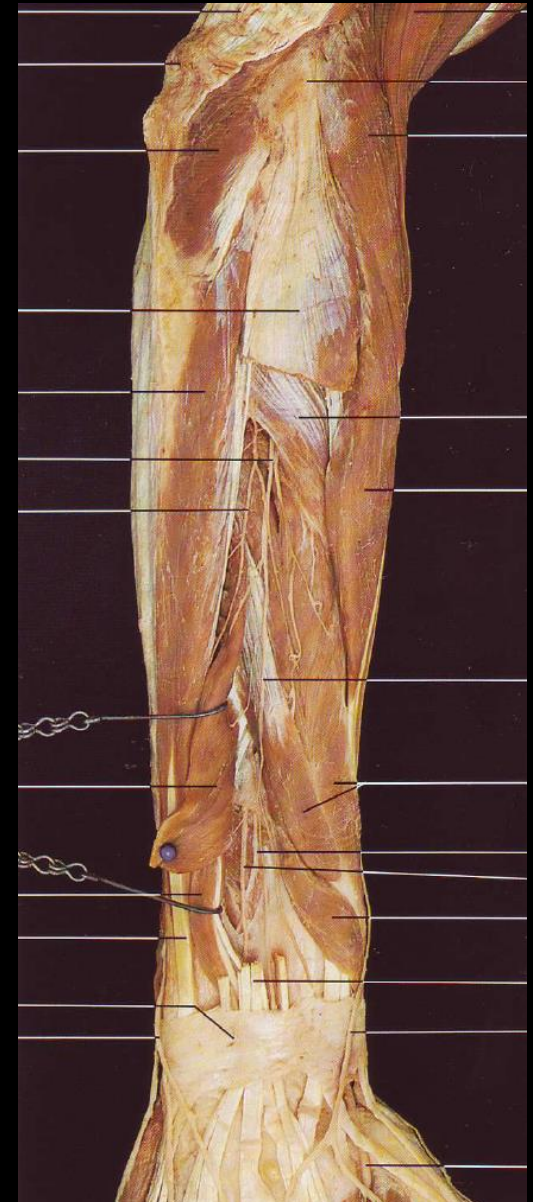
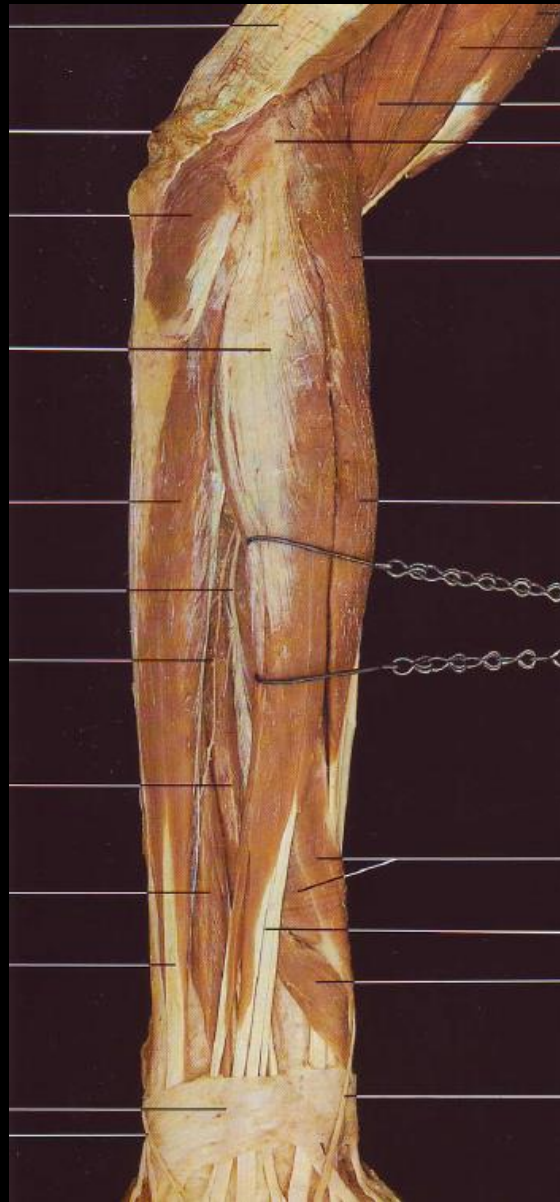
Nervus radialis – ramus profundus

- from fasciculus posterior
- 1. canalis nervi radialis
- 2. between m. brachialis and m. brachioradialis
- 3. in fossa cubitalis bifurcates into ramus superficialis and ramus profundus
- 4. **canalis supinatorius**
- 5. **into dorsal muscles group of forearm (= n. interosseus posterior)**



Nervus radialis – ramus profundus

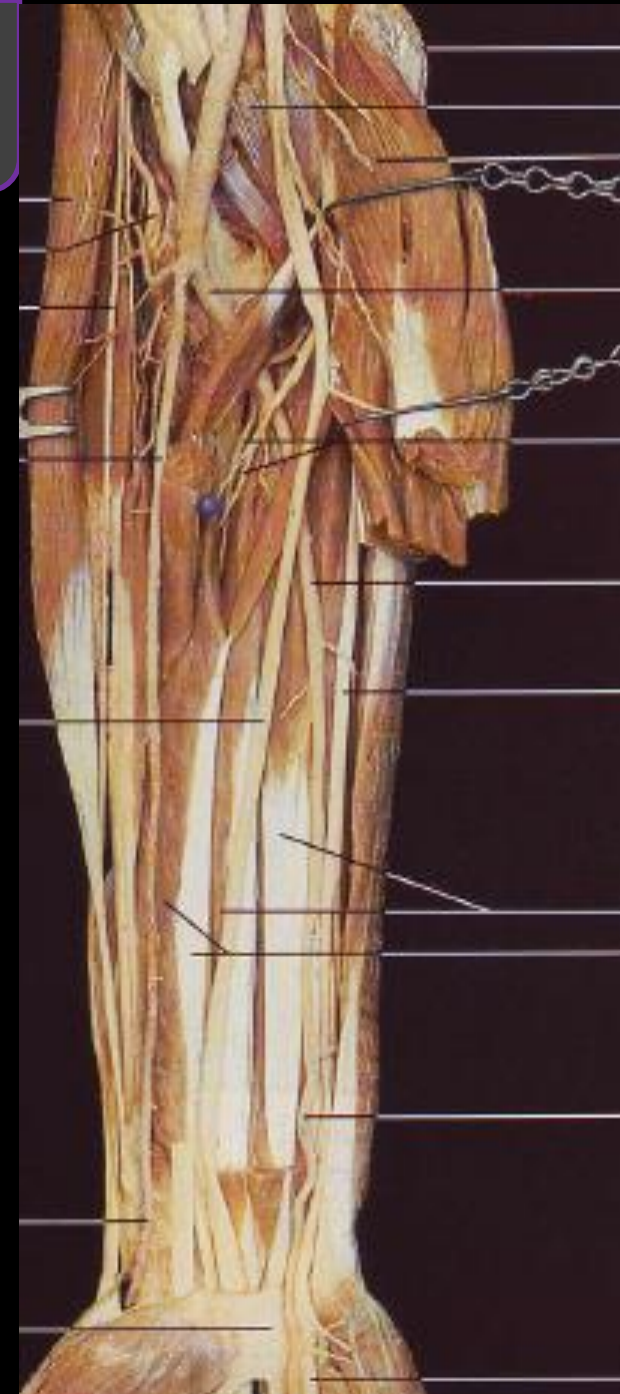
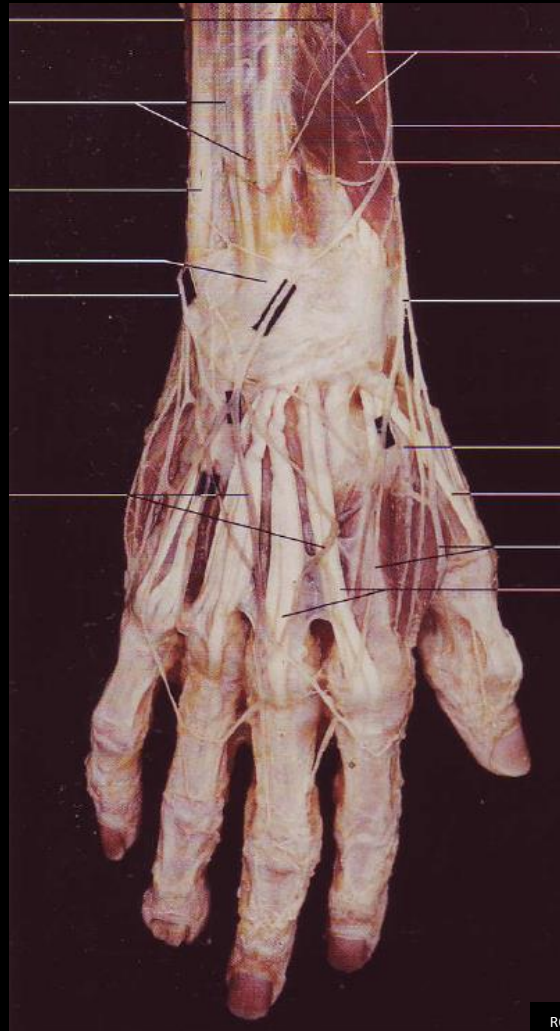
- from fasciculus posterior
- 1. canalis nervi radialis
- 2. between m. brachialis and m. brachioradialis
- 3. in fossa cubitalis bifurcates into ramus superficialis and ramus profundus
- 4. canalis supinatorius**
- 5. into dorsal muscles group of forearm**
(= n. interosseus posterior)



N. radialis – ramus superficialis

- from fasciculus posterior

1. canalis nervi radialis
2. between m. brachialis and m. brachioradialis
3. in fossa cubitalis bifurcates into ramus superficialis and ramus profundus
4. **between m. brachioradialis and m. flexor carpi radialis**
5. **across foveola radialis**



Topographical anatomy is the base



Vessels of lower limb

Arteries:

Arcus aortae

Aorta thoracica

Aorta abdominalis

Arteria iliaca communis

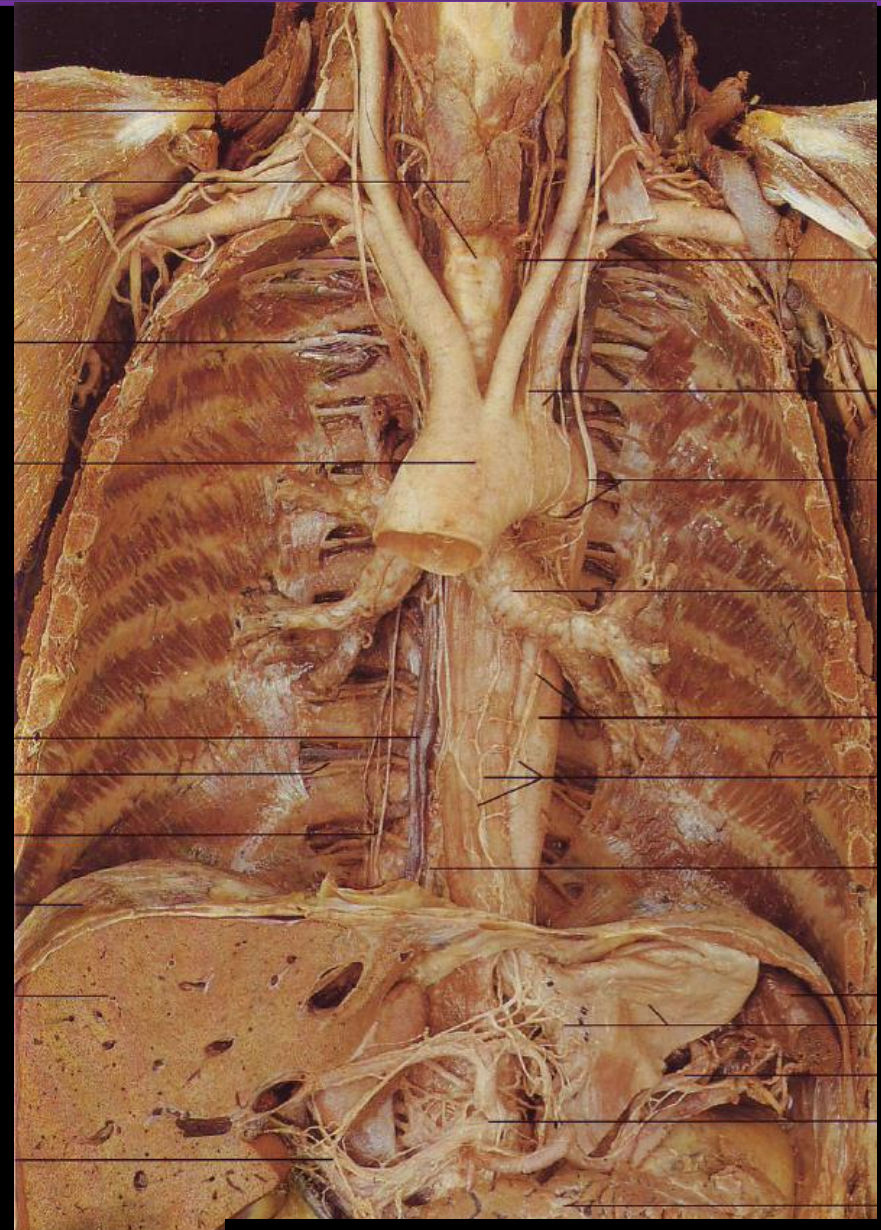
1. Arteria iliaca externa

2. Arteria femoralis

3. Arteria poplitea

4. Arteria tibialis posterior
– a. dorsalis pedis

5. Arteria tibialis anterior
– a. plantaris medialis et lateralis



Vessels of lower limb

Tepny:

Arcus aortae

Aorta thoracica

Aorta abdominalis

Arteria iliaca communis

1. Arteria iliaca externa

2. Arteria femoralis

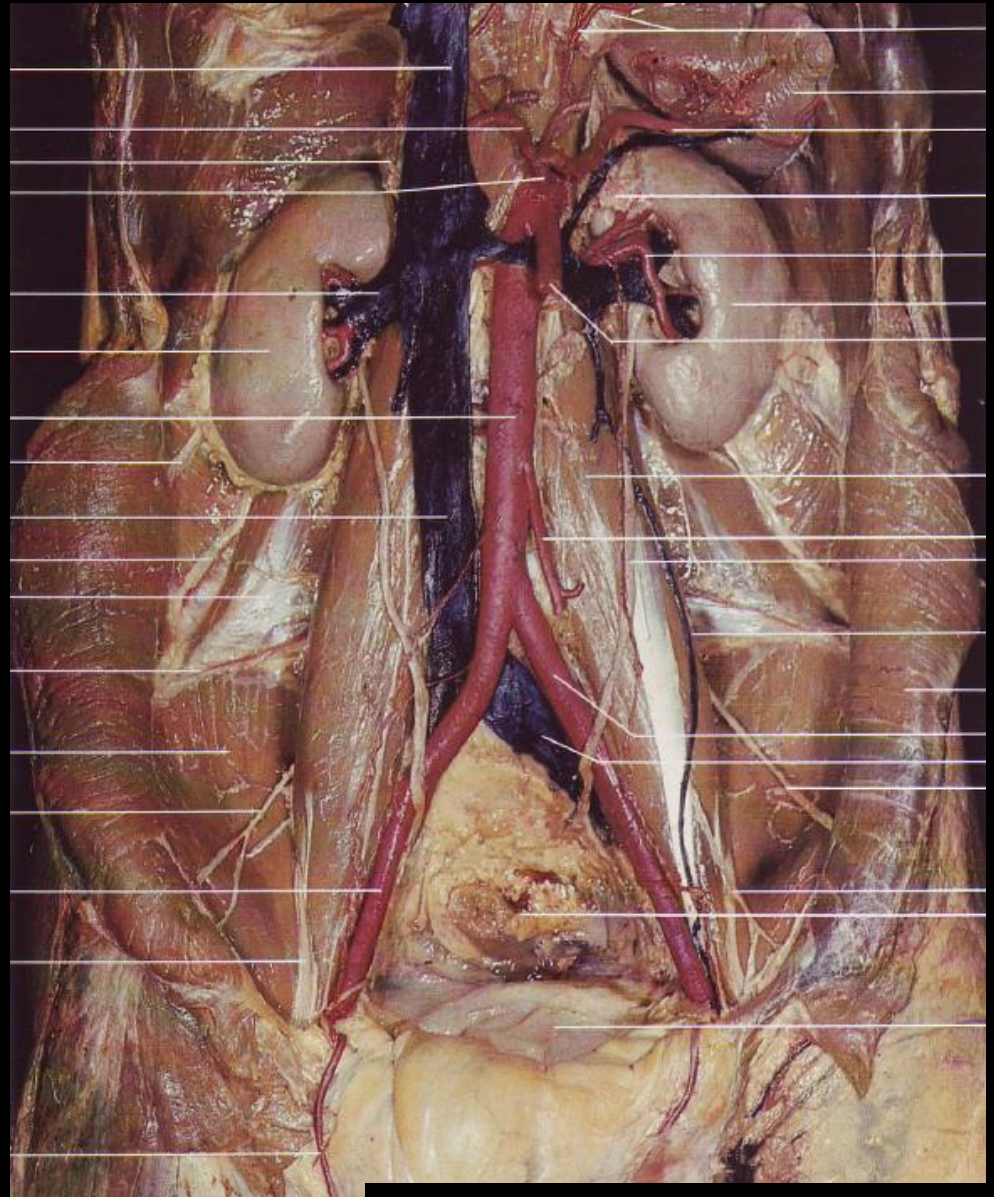
3. Arteria poplitea

4. Arteria tibialis posterior

– a. dorsalis pedis

5. Arteria tibialis anterior

– a. plantaris medialis et lateralis



Vessels of lower limb

Arteries:

Arcus aortae

Aorta thoracica

Aorta abdominalis

Arteria iliaca communis

1. Arteria iliaca externa

2. Arteria femoralis

3. Arteria poplitea

4. Arteria tibialis posterior
– a. dorsalis pedis

5. Arteria tibialis anterior
– a. plantaris medialis et lateralis



Arteria iliaca externa

- ventral branch from arteria iliaca communis
- courses withi greater pelvis

Course:

1. towards lacuna vasorum (vascular space)

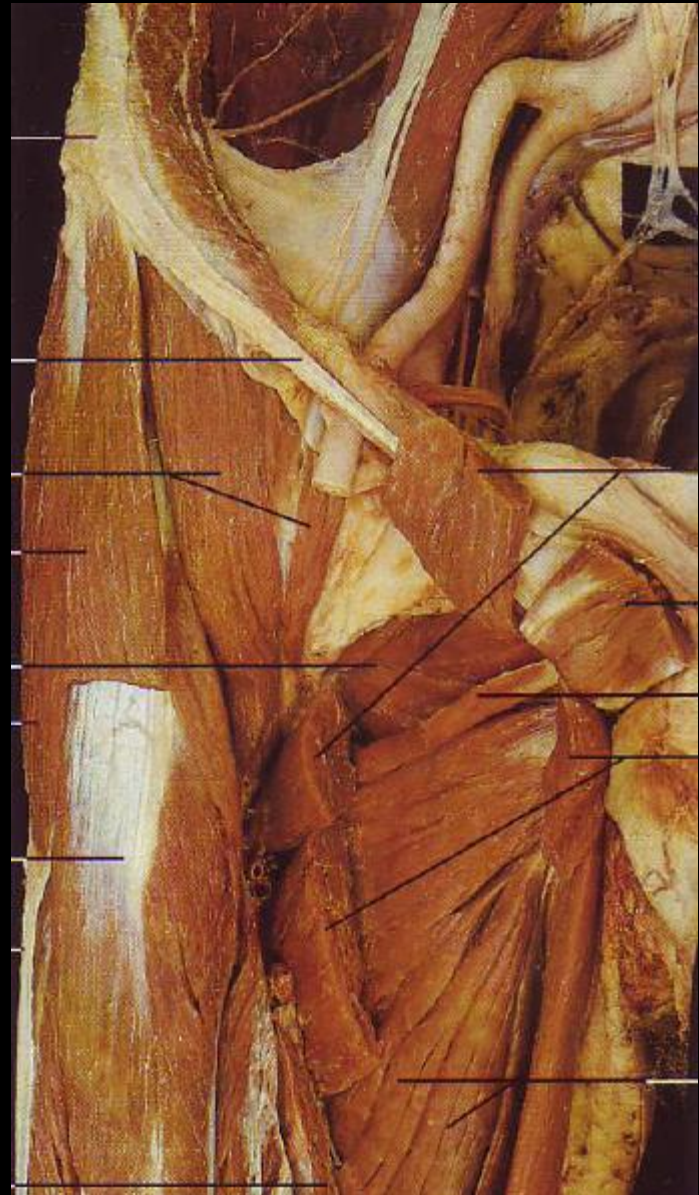
Important branches:

Arteria epigastrica inferior

- ascends between mezi fascia transversalis and ligamentum interfoveolare

Arteria circumflexa ilium profunda

- along external margin of greater pelvis



Arteria femoralis

- continuation of arteria iliaca externa
- runs along ventromedial aspect of thigh

Course:

1. from lacuna vasorum
2. within trigonum femorale and fossa iliopectinea
3. through canalis adductorius (of Hunter)
4. through hiatus adductorius

Important branch:

Arteria profunda femoris

- between m. adductor longus
and m. adductor magnus

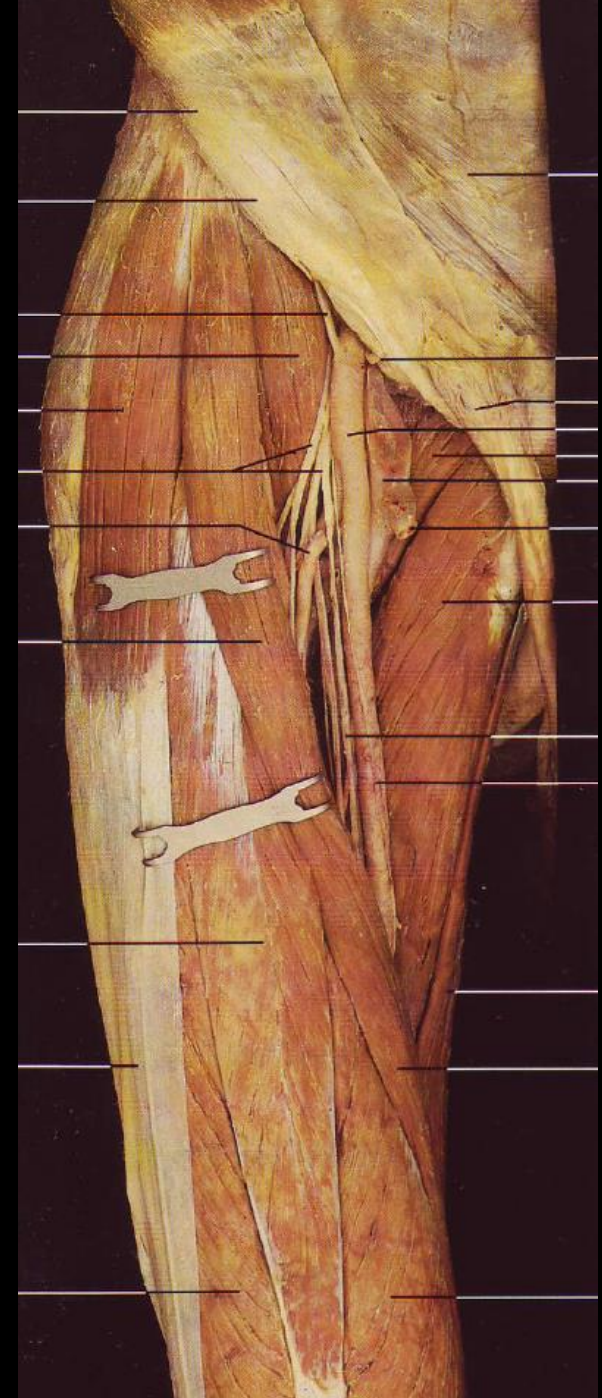
Smaller branches

Arteria circumflexa ilium superficialis

Arteria epigastrica superficialis

Arteria pudenda externa profunda et superficialis

Arteria genus descendens



Arteria femoralis

- continuation of arteria iliaca externa
- runs along ventromedial aspect of thigh

Course:

1. from lacuna vasorum
2. within trigonum femorale and fossa iliopectinea
3. through canalis adductorius (of Hunter)
4. through hiatus adductorius

Important branch:

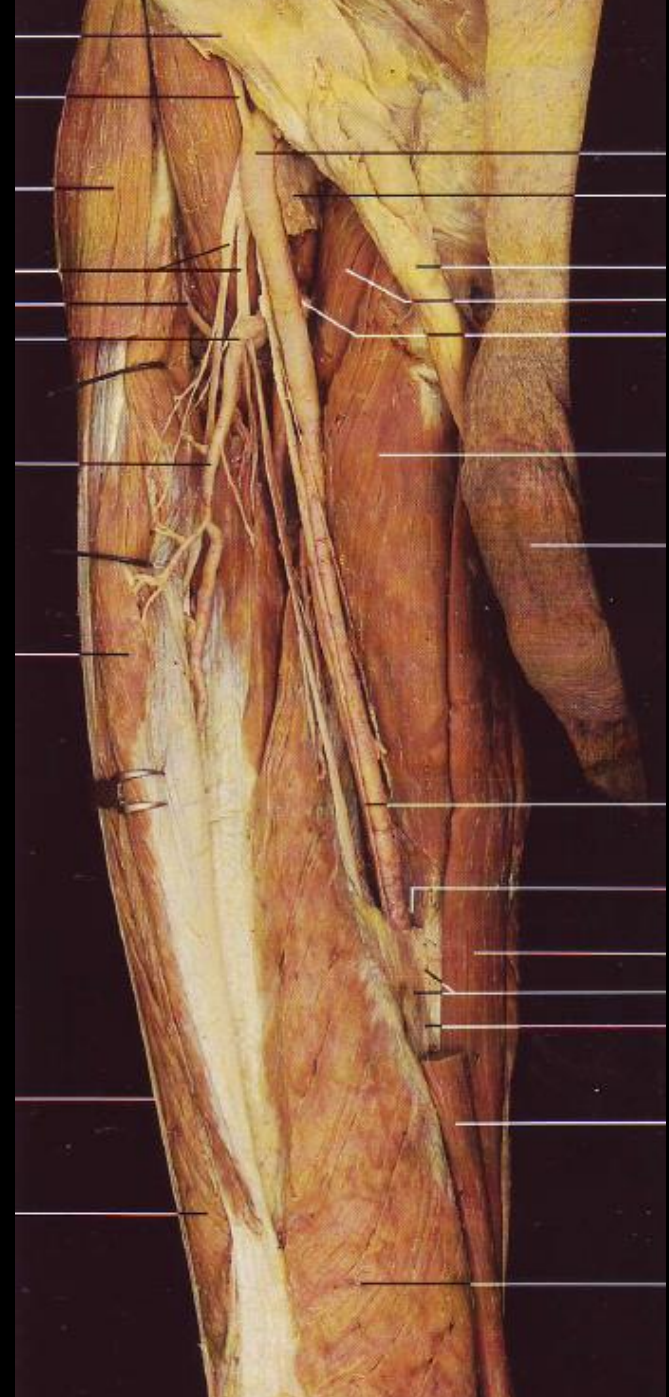
Arteria profunda femoris

- between m. adductor longus
and m. adductor magnus

Branches of arteria profunda femoris

Arteria circumflexa femoris medialis et lateralis

Arteria perforans prima, secunda, tertia



Arteria poplitea

- continuation of arteria femoralis
- within fossa poplitea

Course:

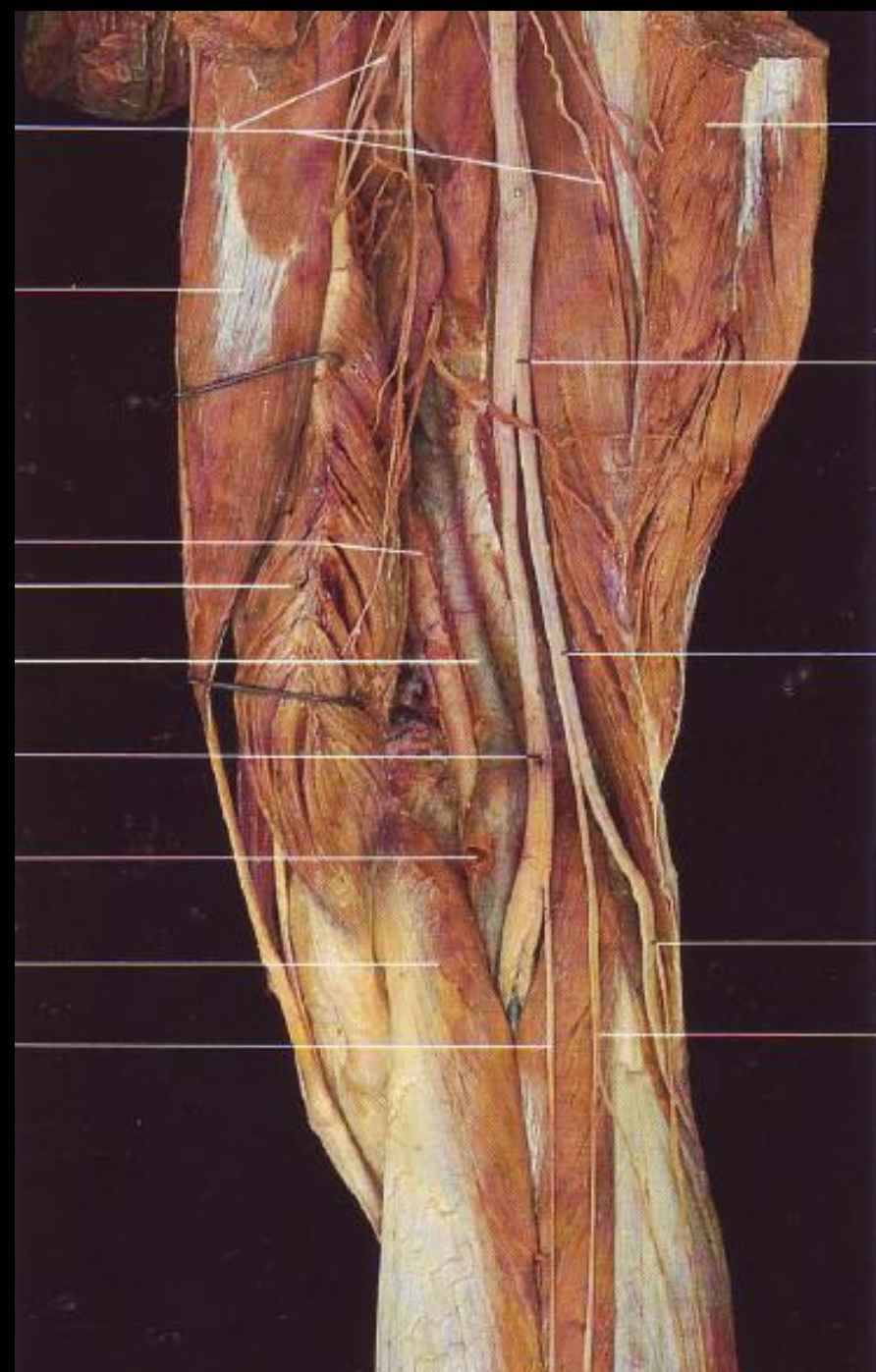
1. from hiatus adductorius
2. medially, under
v. poplitea and n. tibialis
3. down to inferior margin of m. popliteus

Branches of arteria poplitea

Arteria genus superior medialis et lateralis

Arteria genus media

Arteria genus inferior medialis et lateralis



Arteria poplitea

- continuation of arteria femoralis
- within fossa poplitea

Course:

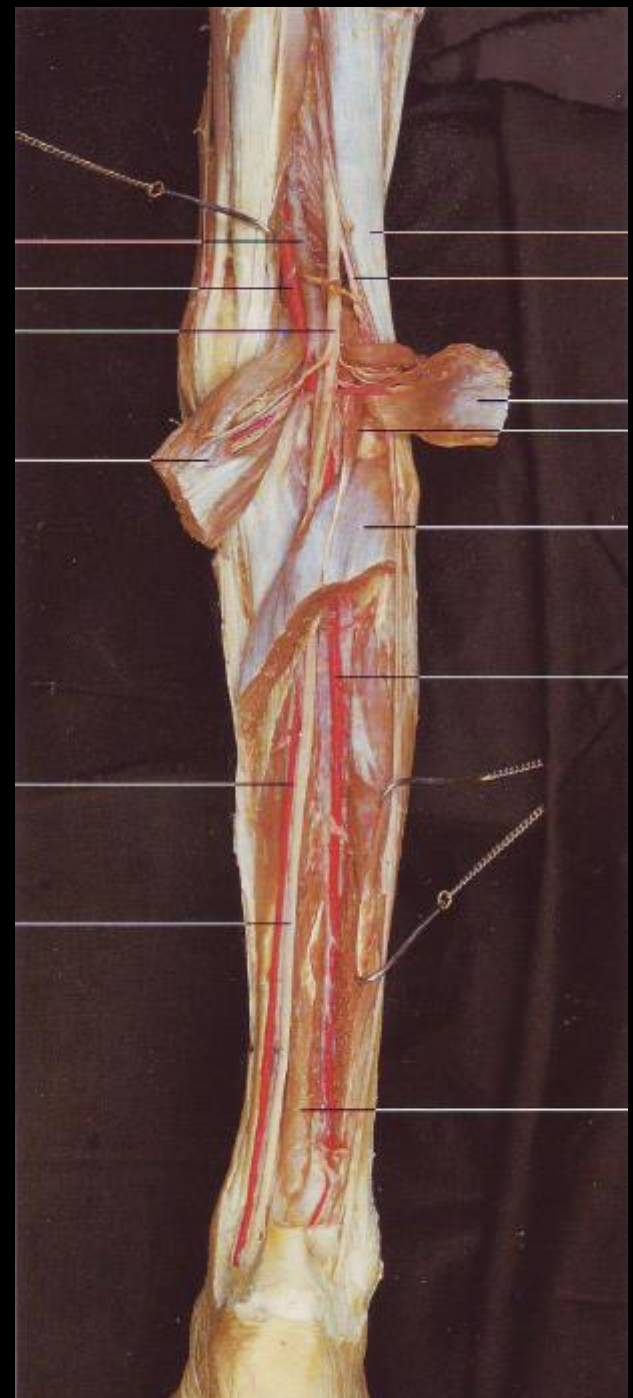
1. from hiatus adductorius
2. medially, under
v. poplitea and n. tibialis
3. down to inferior margin of m. popliteus

Branches of arteria poplitea

Arteria genus superior medialis et lateralis

Arteria genus media

Arteria genus inferior medialis et lateralis



Arteria tibialis anterior

- ventral continuation of arteria poplitea
- within anterior compartment of leg
- with n. fibularis profundus

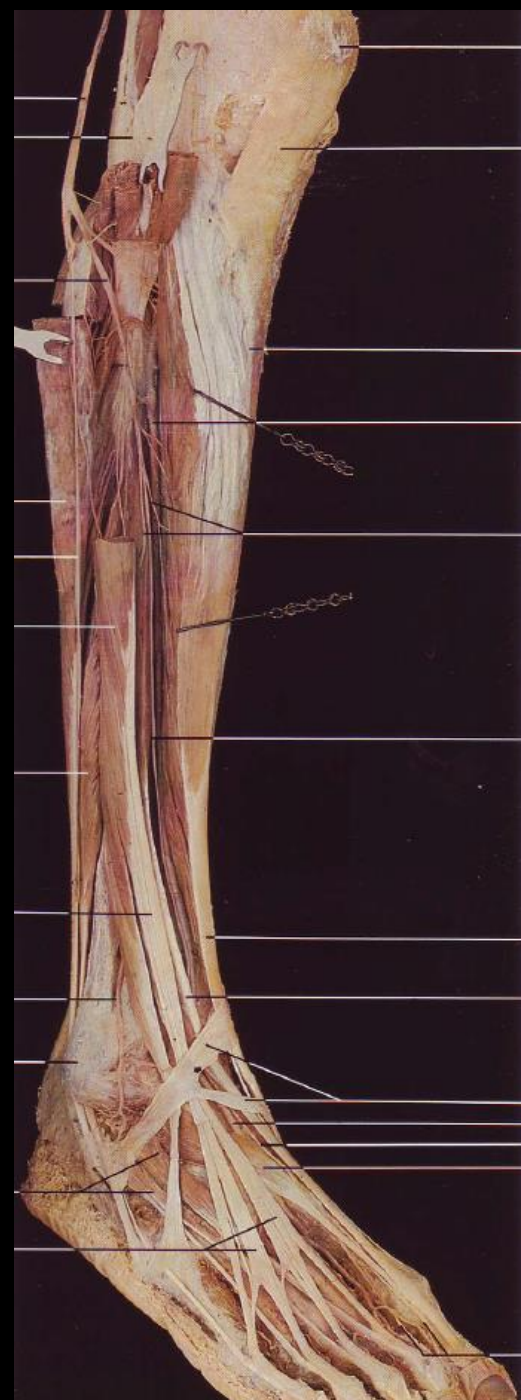
Course:

1. through **membrana interossea cruris**
2. between **m. tibialis anterior** and **m. extensor hallucis longus**

Important branches:

Arteria dorsalis pedis

- continuation on the dorsum of foot
- between tendons of **m. extensor hallucis longus** and **m. extensor digitorum longus**

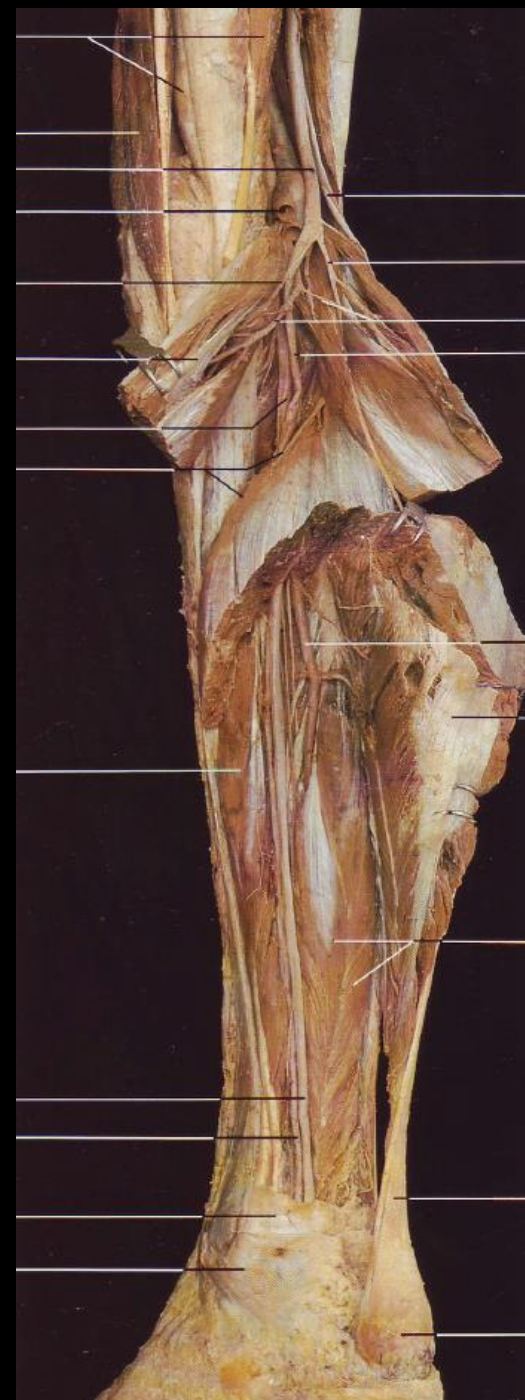


Arteria tibialis posterior

- dorsal continuation of arteria poplitea
- within posterior compartment of leg
- with n. tibialis

Course:

1. under arcus tendineus musculi solei
2. through canalis malleolaris



Arteria tibialis posterior

- dorsal continuation of arteria poplitea
- within posterior compartment of leg
- with n. tibialis

Course:

1. under arcus tendineus musculi solei
2. through canalis malleolaris
 - here bifurcates into a. plantaris medialis et lateralis

Important branches:

Arteria fibularis

- within canalis musculofibularis (of Hyrtl)



Arteria tibialis posterior

- dorsal continuation of arteria poplitea
- within posterior compartment of leg
- with n. tibialis

Course:

1. under arcus tendineus musculi solei
2. through canalis malleolaris
 - here bifurcates into a. plantaris medialis et lateralis

Important branches:

Arteria fibularis

- within canalis musculofibularis (of Hyrtl)

Arteria plantaris medialis

- along the medial side of sole

Arteria plantaris lateralis

- along the lateral side of sole
- both join to form **arcus plantaris**



Veins of lower limb

Deep veins:

- follow arteries and are doubled as high as fossa poplitea

Venae tibiales anteriores

Venae tibiales posteriores

Venae fibulares

Vena poplitea

Vena femoralis

Vena profunda femoris

Vena femoralis comunnis

Superficial veins:

Vena saphena magna

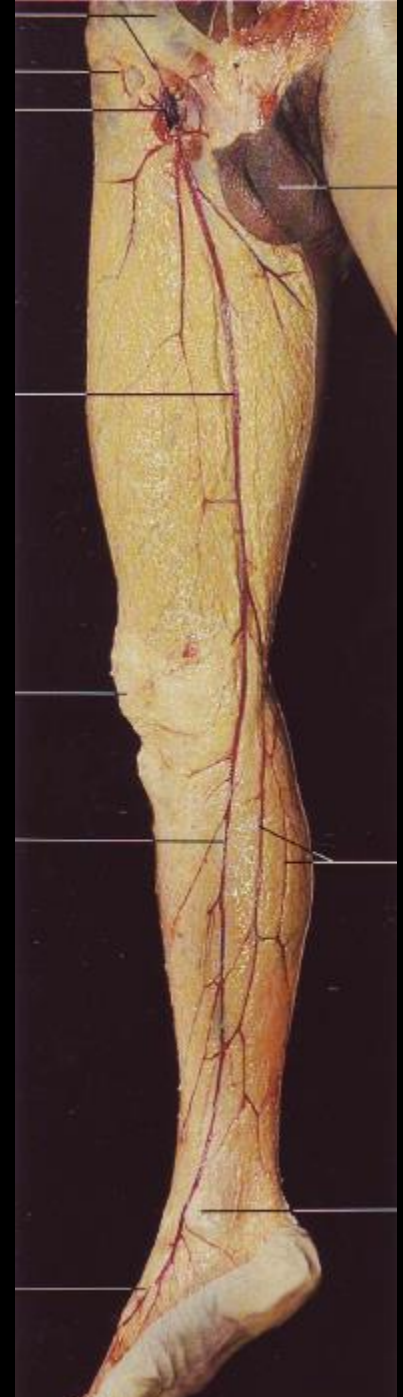
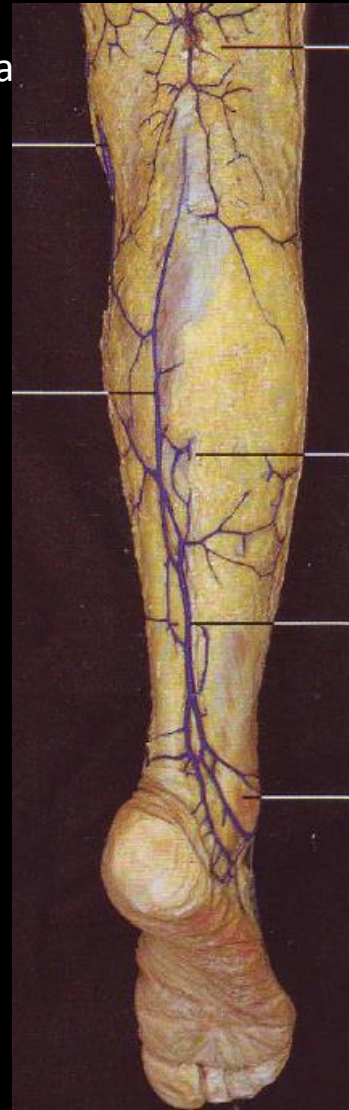
- along the medial side of leg and thigh
- with n. saphenus (in leg only)

Vena saphena parva

- along the dorsal aspect of leg
- with n. suralis

Extensio cranialis venae saphenae parvae

- along the dorsal aspect of thigh
- with n. cutaneus femoris posterior



Nerves of lower limb

Plexus lumbalis:

Nervus femoralis

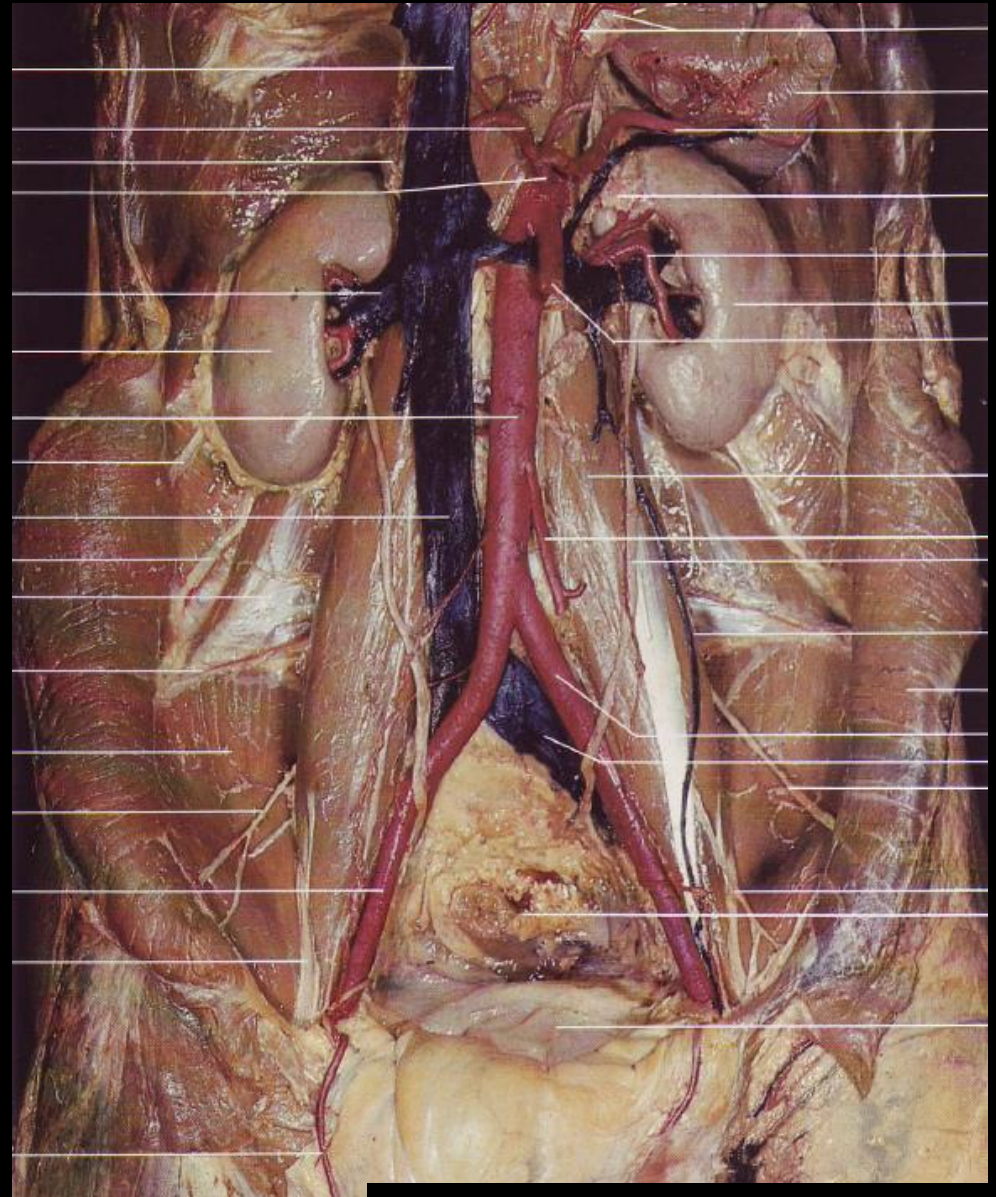
Nervus obturatorius

Plexus sacralis:

Nervus ischiadicus

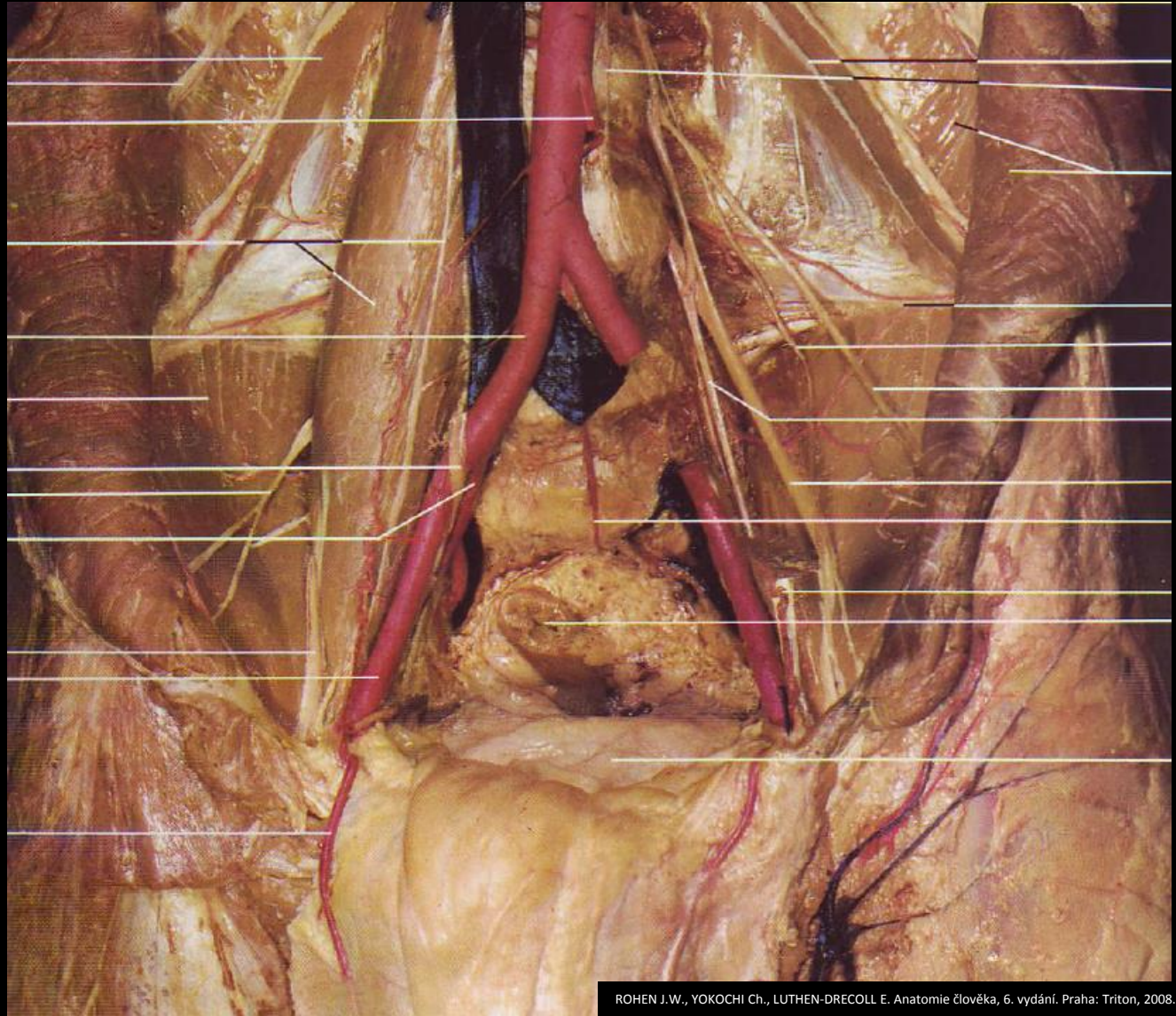
Nervus gluteus superior

Nervus gluteus inferior



Nervus femoralis

- lateral to m. psoas major
- 1. through lacuna musculorum (muscular space) – here is medial to m. iliopsoas



Nervus femoralis

- lateral to m. psoas major

1. lacuna musculorum
2. trigonum femorale
and fossa iliopectinea

Important branches:

Nervus saphenus

1. canalis adductorius (of Hunter)
2. pierces lamina vastoadductoria superficially
3. medial aspect of thigh, together with v. saphena magna



Nervus femoralis

- lateral to m. psoas major

1. lacuna musculorum
2. trigonum femorale
and fossa iliopectinea

Important branches:

Nervus saphenus

1. canalis adductorius (of Hunter)
2. pierces lamina vastoadductoria superficially
3. medial aspect of thigh, together with v. saphena magna



Nervus femoralis

- lateral to m. psoas major

1. lacuna musculorum
2. trigonum femorale
and fossa iliopectinea

Important branches:

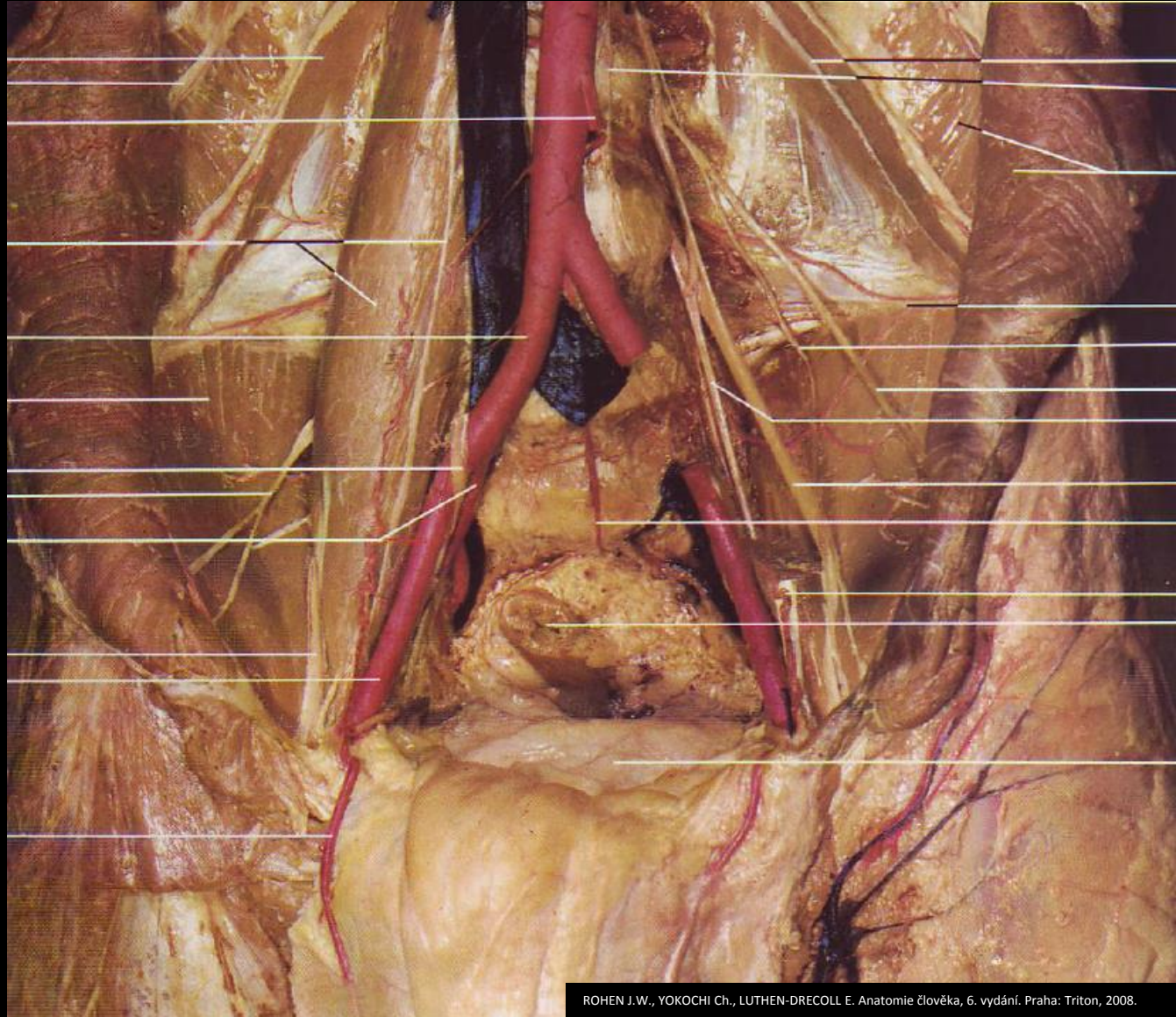
Nervus saphenus

1. canalis adductorius (of Hunter)
2. pierces lamina vastoadductoria superficially
3. medial aspect of thigh, together with v. saphena magna



Nervus obturatorius

- medial to m. psoas major
- 1. canalis obturatorius with vasa obturatoria
- 2. within medial muscle group of thigh



Nervus ischiadicus

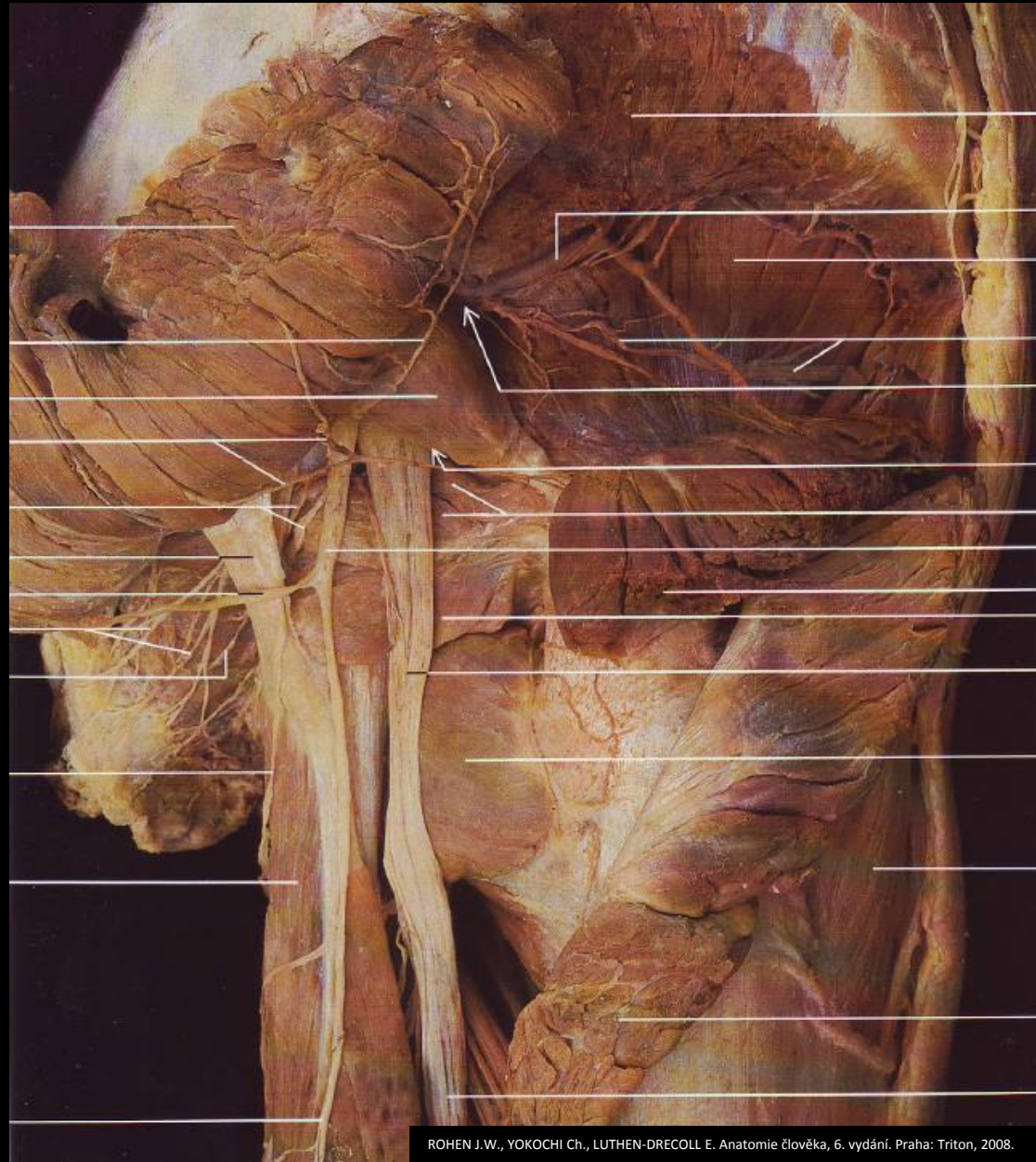
- from plexus sacralis
- 1. foramen infrapiriforme
- 2. between m. biceps femoris and m. semitendinosus et semimembranosus
- 3. fossa poplitea – bifurcation into n. tibialis and n. fibularis communis



Nervus ischiadicus

- from plexus sacralis

1. foramen infrapiriforme
2. between m. biceps femoris and m. semitendinosus et semimembranosus
3. fossa poplitea – bifurcation into n. tibialis and n. fibularis communis



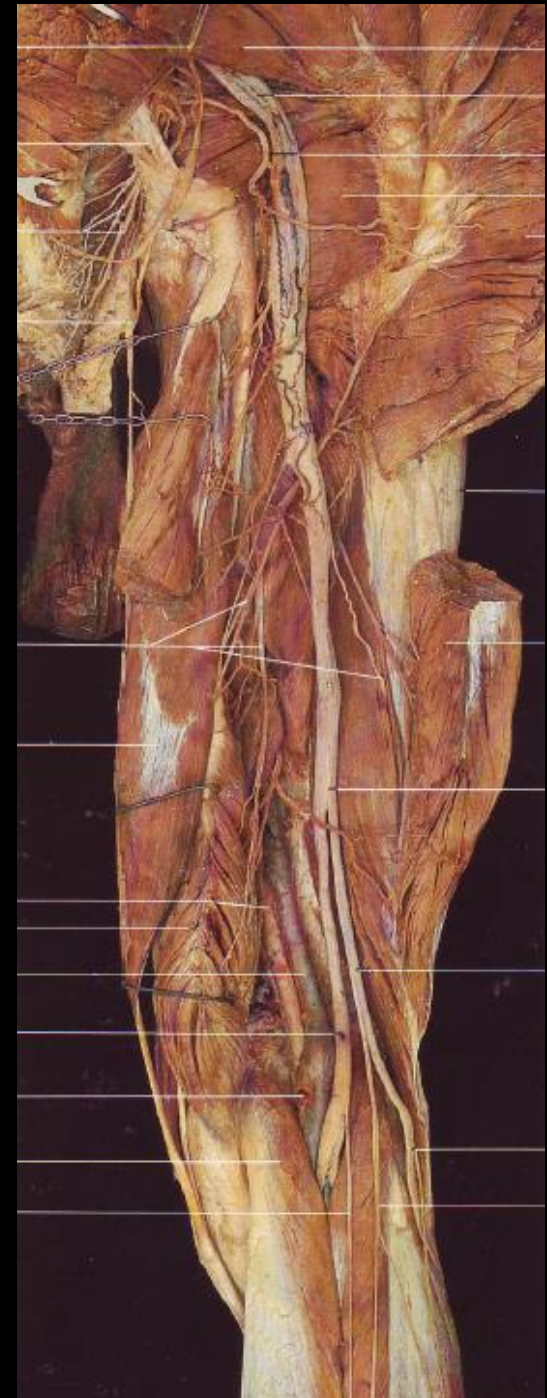
Nervus ischiadicus

- from plexus sacralis
- 1. foramen infrapiriforme
- 2. between m. biceps femoris and m. semitendinosus et semimembranosus
- 3. fossa poplitea – bifurcation into n. tibialis and n. fibularis communis



Nervus ischiadicus

- from plexus sacralis
- 1. foramen infrapiriforme
- 2. between m. biceps femoris and m. semitendinosus et semimembranosus
- 3. fossa poplitea – bifurcation into n. tibialis and n. fibularis communis



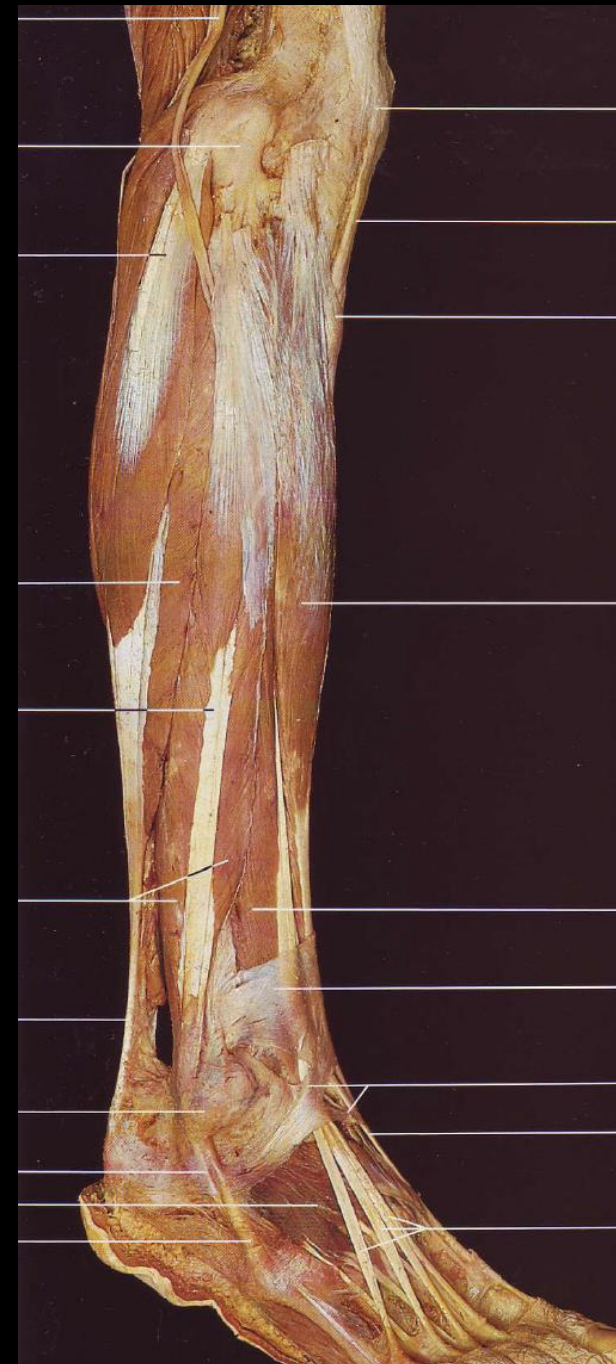
Nervus fibularis communis

- lateral terminal branch of n. ischiadicus
1. fossa poplitea
 2. behind caput fibulae
 3. canalis fibularis – bifurcation into n. fibularis superficialis et profundus



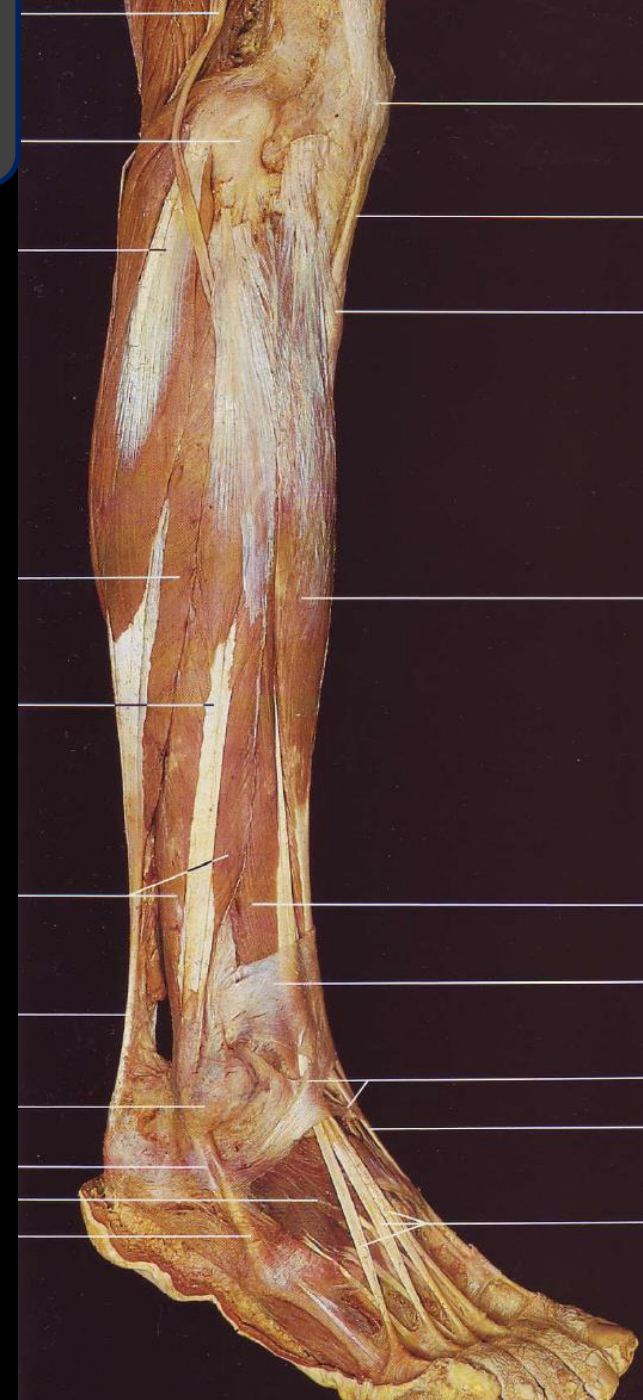
Nervus fibularis communis

- lateral terminal branch of n. ischiadicus
1. fossa poplitea
 2. behind caput fibulae
 3. canalis fibularis – bifurcation into n. fibularis superficialis et profundus



Nervus fibularis superficialis

- superficial terminal branch of n. fibularis communis
- 1. between m. fibularis longus and m. fibularis brevis
- 2. pierces fascia cruris superficially on ventral aspect of leg
- 3. superficial to retinaculum mm. extensorium superius et inferius
- 4. descends to dorsal aspect of foot



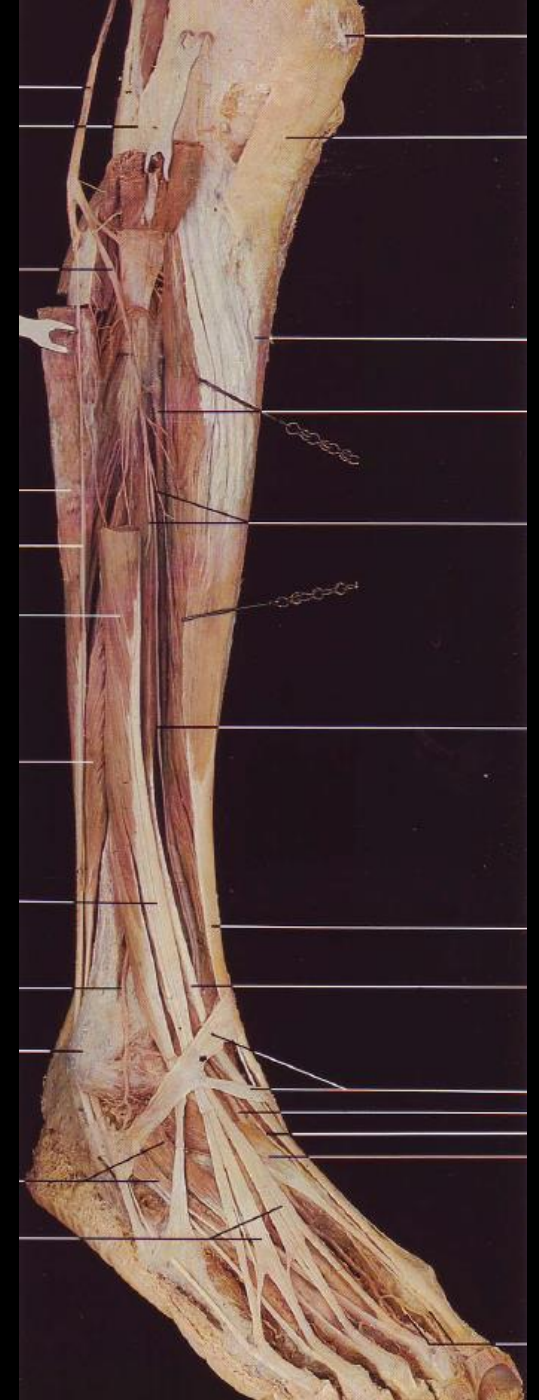
Nervus fibularis superficialis

- **superficial terminal branch of n. fibularis communis**
- 1. **between m. fibularis longus and m. fibularis brevis**
- 2. **pierces fascia cruris superficially on ventral aspect of leg**
- 3. **superficial to retinaculum mm. extensorium superius et inferius**
- 4. **descends to dorsal aspect of foot**



Nervus fibularis profundus

- deep terminal branch of n. fibularis profundus
 - with vasa tibialia anteriora
1. within anterior compartment of thigh
 2. between m. tibialis anterior and m. extensor hallucis longus
 3. deep to retinaculum mm. extensorium superius et inferius
 4. deep at dorsal aspect of foot with vasa dorsalia pedis



Nervus fibularis profundus

- deep terminal branch of n. fibularis profundus
 - with vasa tibialia anteriora
1. within anterior compartment of thigh
 2. between m. tibialis anterior and m. extensor hallucis longus
 3. deep to retinaculum mm. extensorium superius et inferius
 4. deep at dorsal aspect of foot with vasa dorsalia pedis



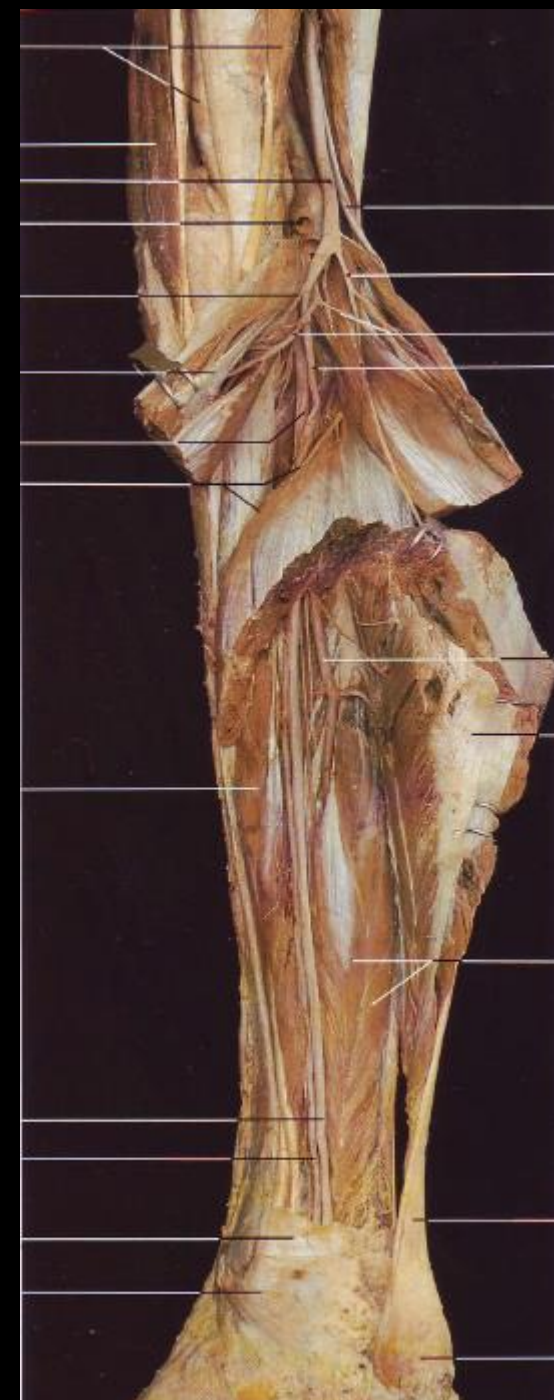
Nervus tibialis

- medial terminal branch of n. ischiadicus
 - with vasa tibialia posteriora
1. fossa poplitea
 2. under arcus tendineus musculi solei
 3. between m. triceps surae
a deep layer of posterior muscle group of leg
 4. through canalis malleolaris (below retinaculum mm. flexorum) – bifurcation into n. plantaris medialis et lateralis



Nervus tibialis

- medial terminal branch of n. ischiadicus
 - with vasa tibialia posteriora
1. fossa poplitea
 2. under arcus tendineus muscoli solei
 3. between m. triceps surae
a deep layer of posterior muscle group of leg
 4. through canalis malleolaris (below retinaculum mm. flexorum)
– bifurcation into n. plantaris medialis et lateralis



Nervus tibialis

- medial terminal branch of n. ischiadicus
 - with vasa tibialia posteriora
1. fossa poplitea
 2. under arcus tendineus musculi solei
 3. between m. triceps surae
a deep layer of posterior muscle group of leg
 4. through canalis malleolaris (below retinaculum mm. flexorum) – bifurcation into n. plantaris medialis et lateralis
 5. into sole

Terminal branches:

Nervus plantaris medialis

Nervus plantaris lateralis



Nervus tibialis

- medial terminal branch of n. ischiadicus
 - with vasa tibialia posteriora
1. fossa poplitea
 2. under arcus tendineus muscoli solei
 3. between m. triceps surae
a deep layer of posterior muscle group of leg
 4. through canalis malleolaris (below retinaculum mm. flexorum) – bifurcation into n. plantaris medialis et lateralis
 5. into sole

Terminal branches:

Nervus plantaris medialis

Nervus plantaris lateralis



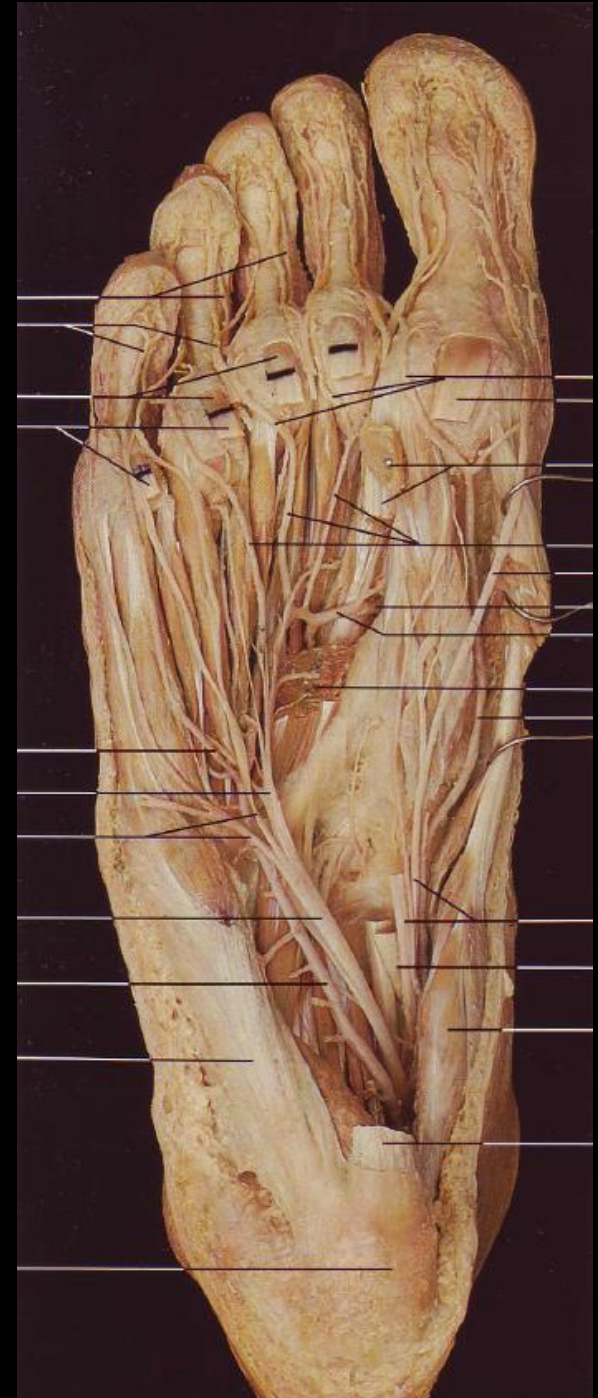
Nervus tibialis

- medial terminal branch of n. ischiadicus
 - with vasa tibialia posteriora
1. fossa poplitea
 2. under arcus tendineus muscoli solei
 3. between m. triceps surae
a deep layer of posterior muscle group of leg
 4. through canalis malleolaris (below retinaculum mm. flexorum) – bifurcation into n. plantaris medialis et lateralis
 5. into sole

Terminal branches:

Nervus plantaris medialis

Nervus plantaris lateralis



Nervi glutei

Nervus gluteus superior

- with vasa glutea superiora

1. foramen suprapiriforme

Nervus gluteus inferior

- with vasa glutea inferiora

1. foramen infrapiriforme

