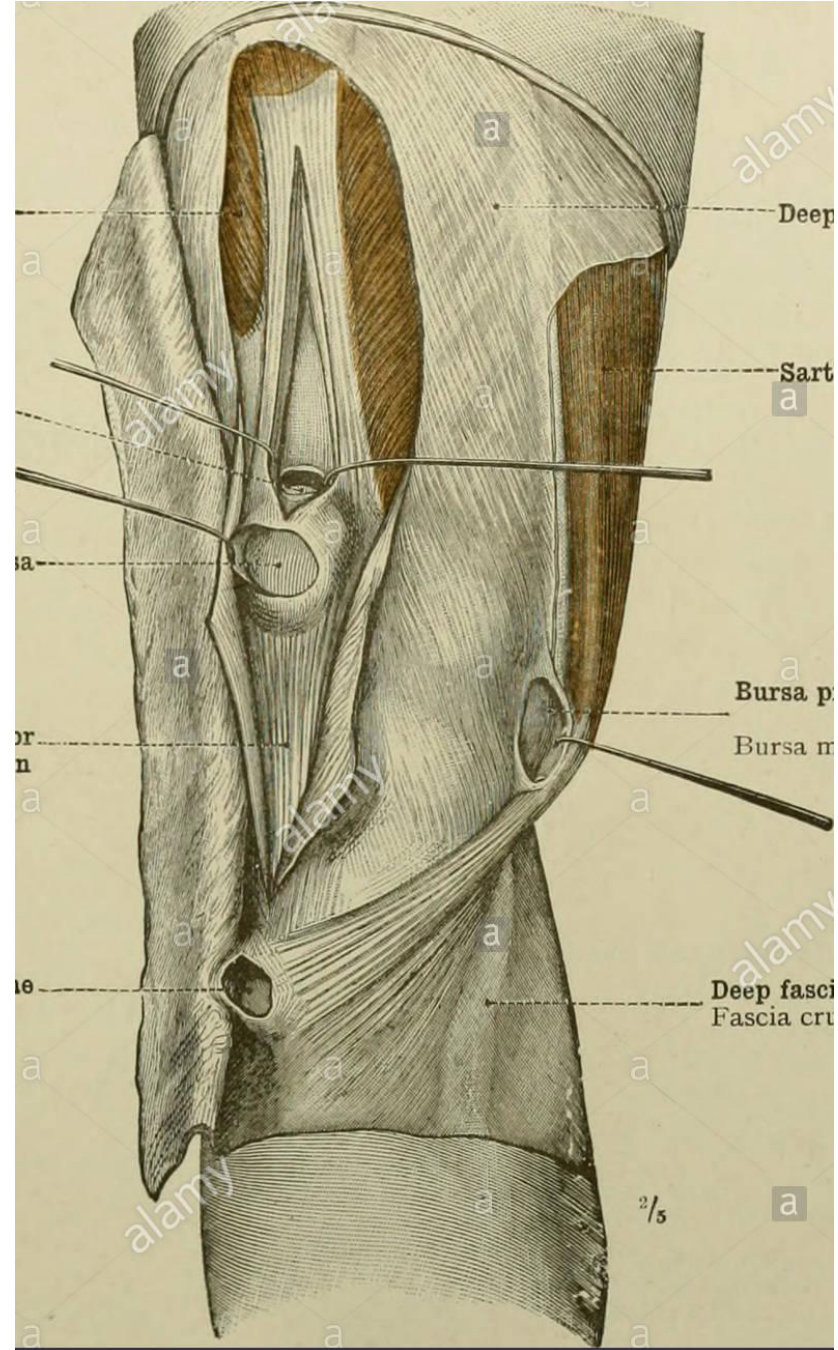
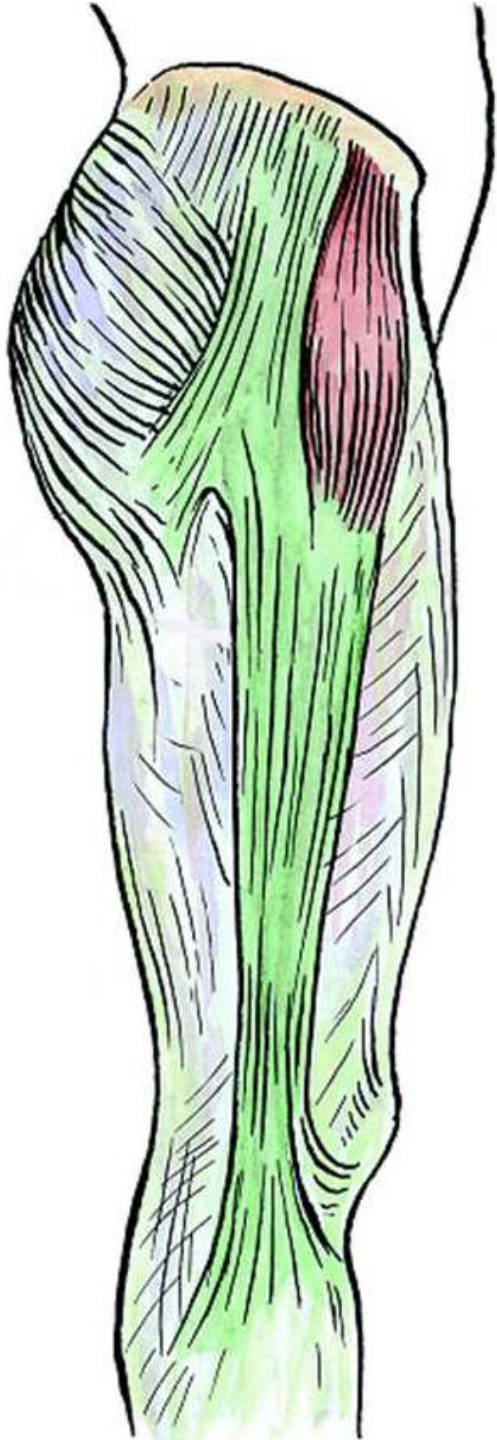


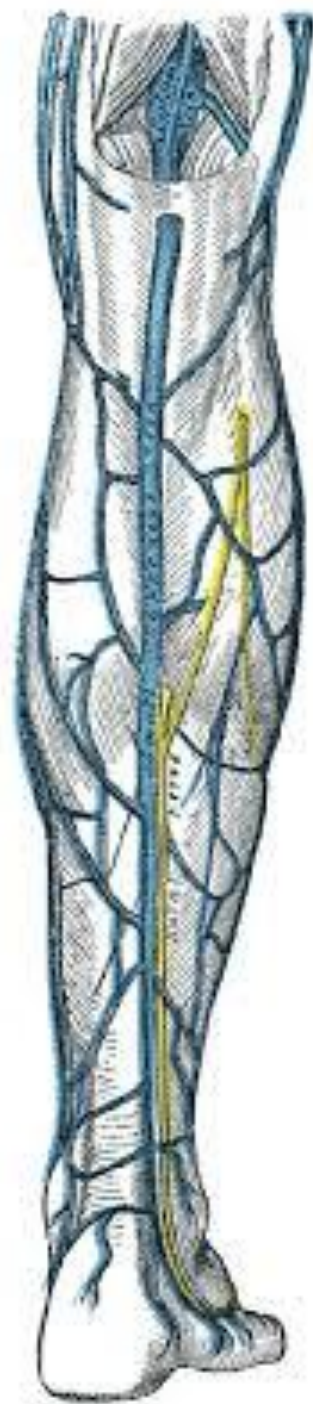
LOWER LIMB COMPARTMENTS

MUDr. Azzat Al-Redouan



Department of Anatomy
Second Faculty of Medicine
Charles University





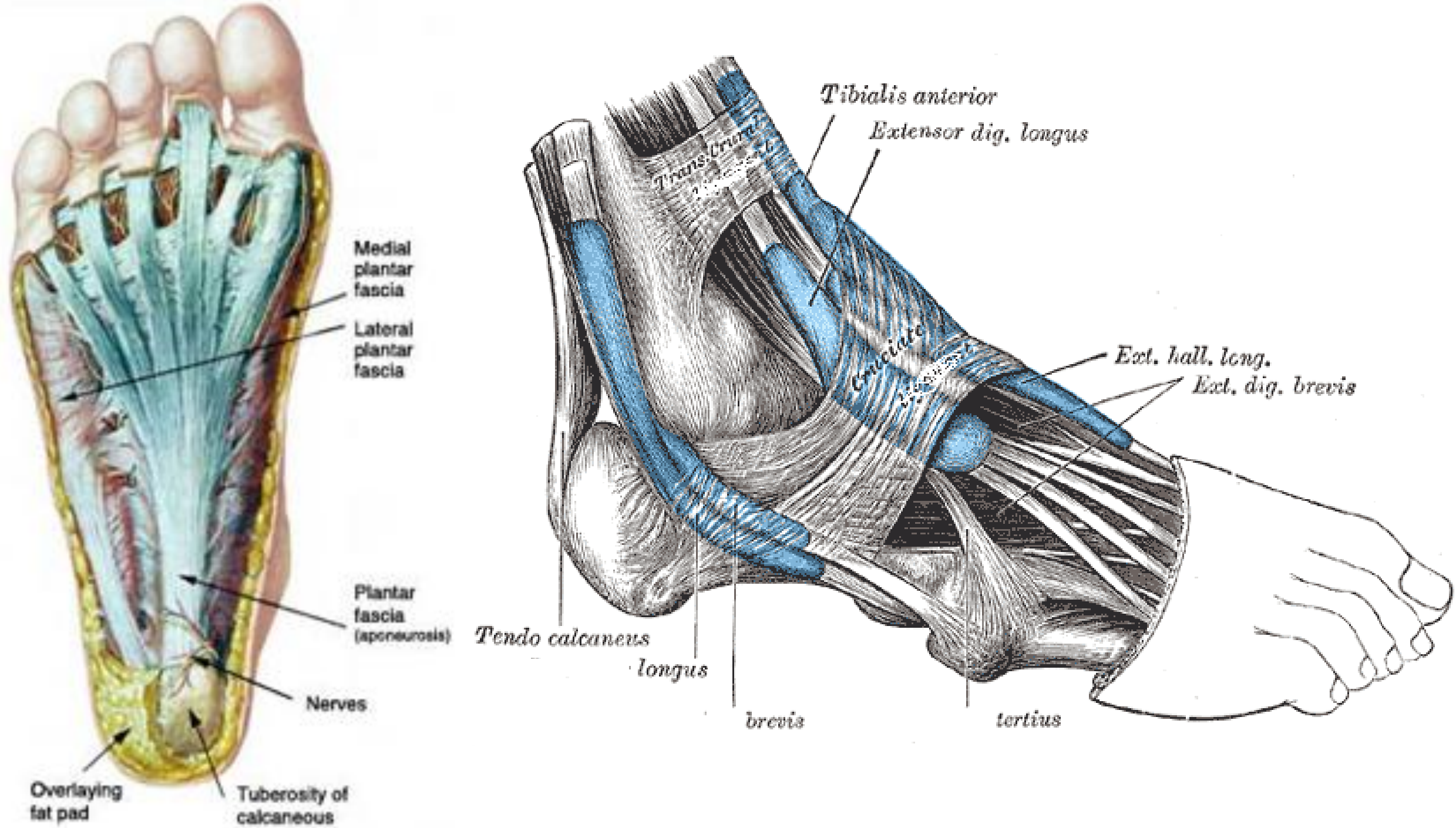
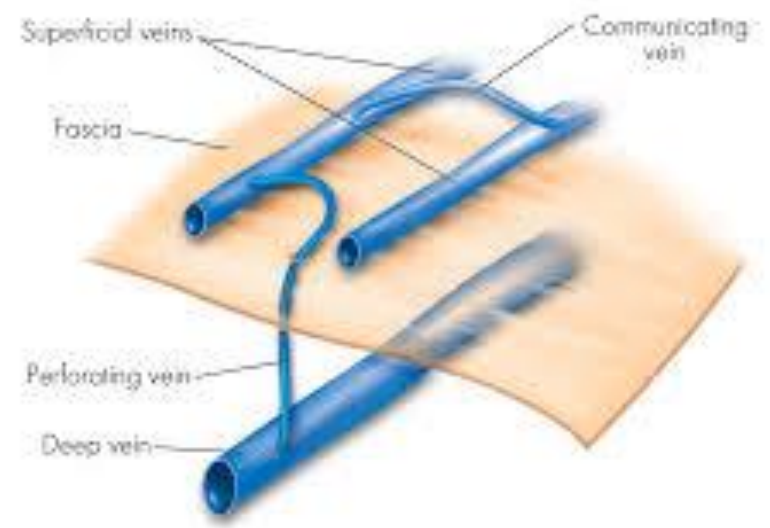
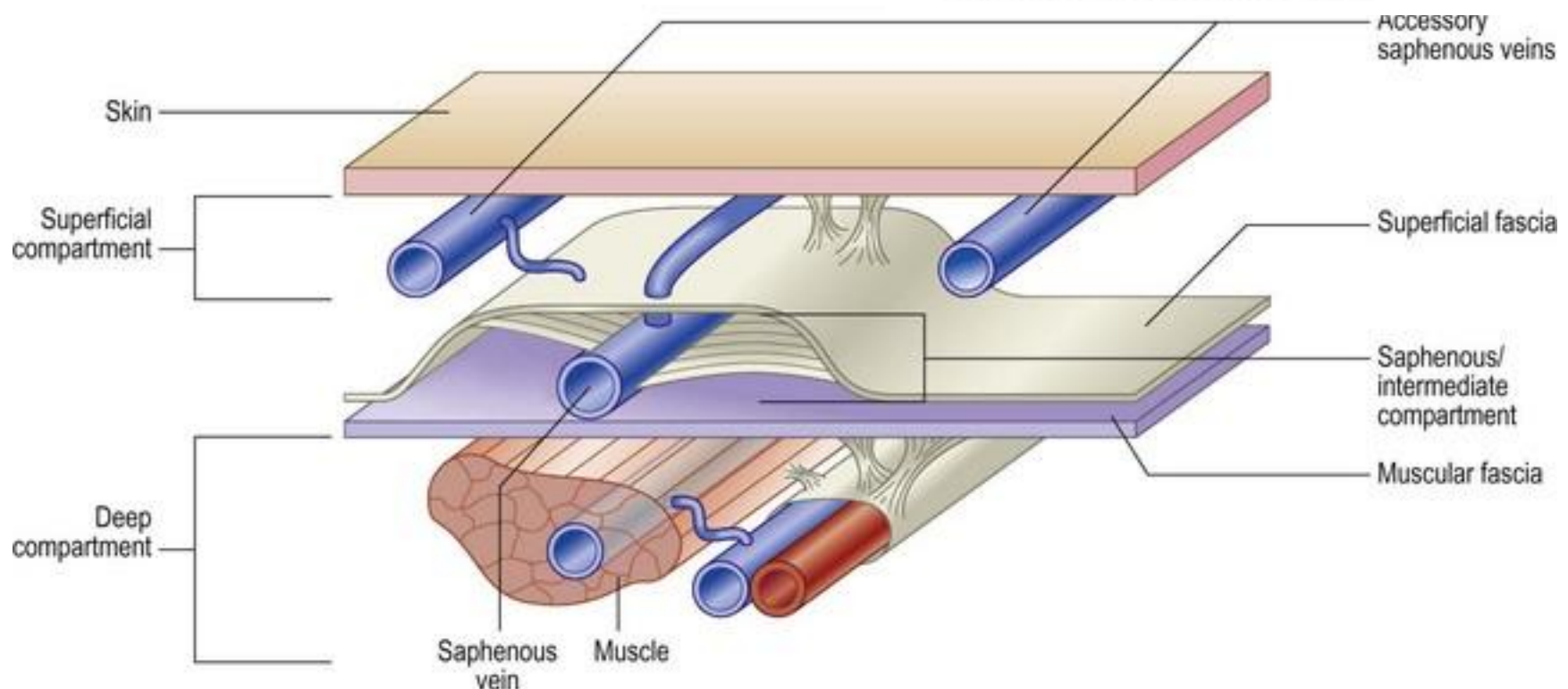
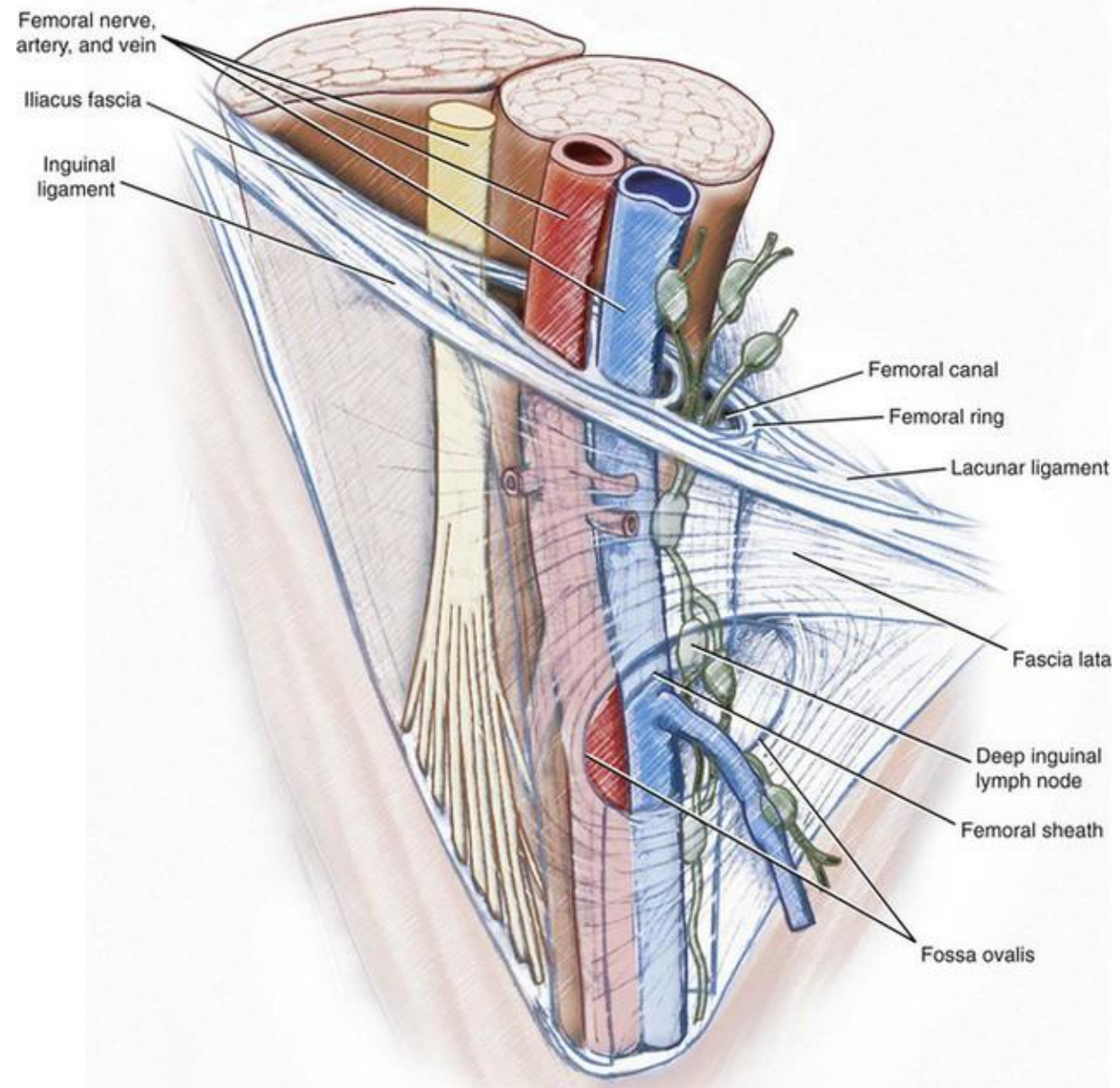


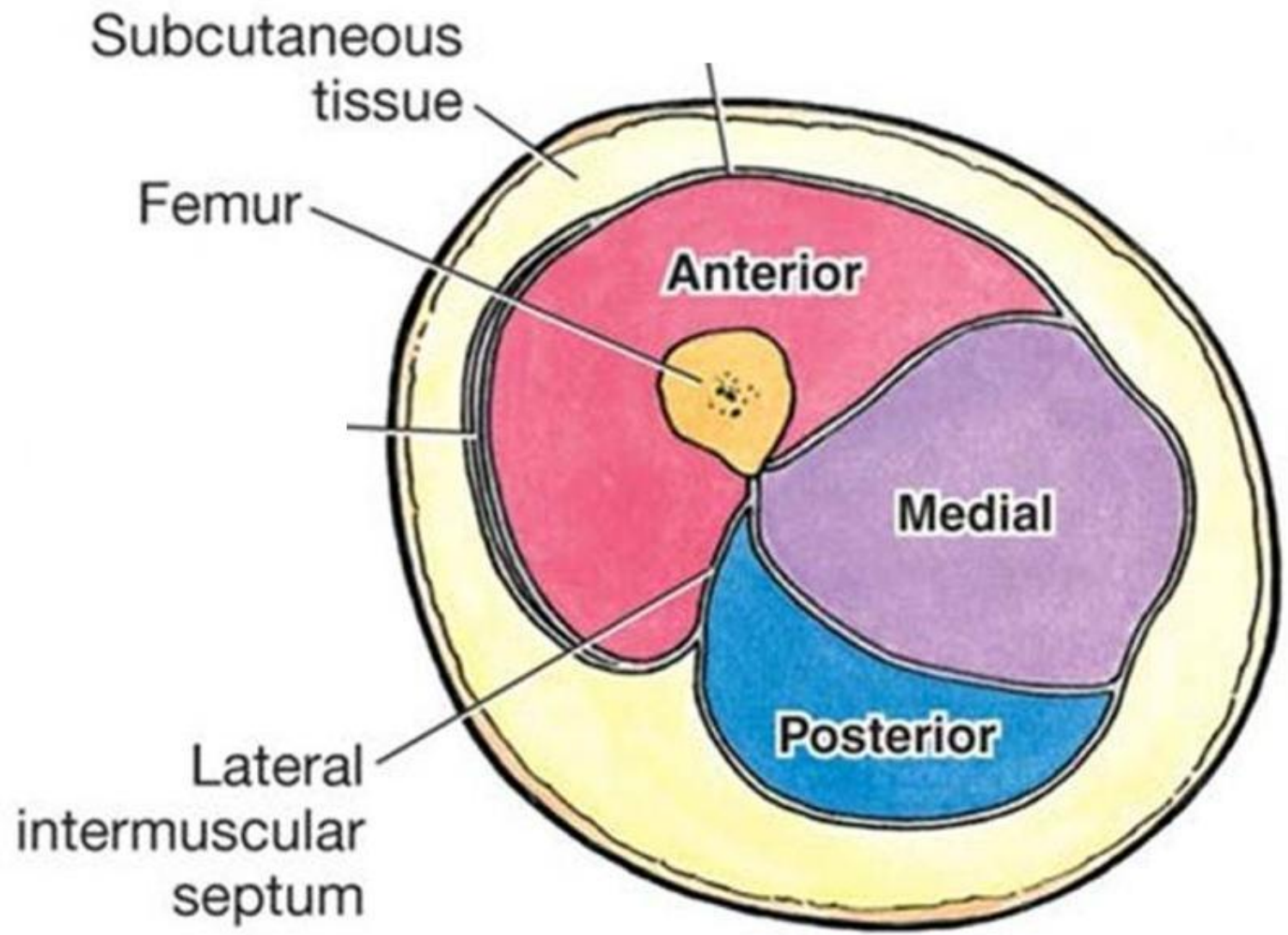
FIGURE 1

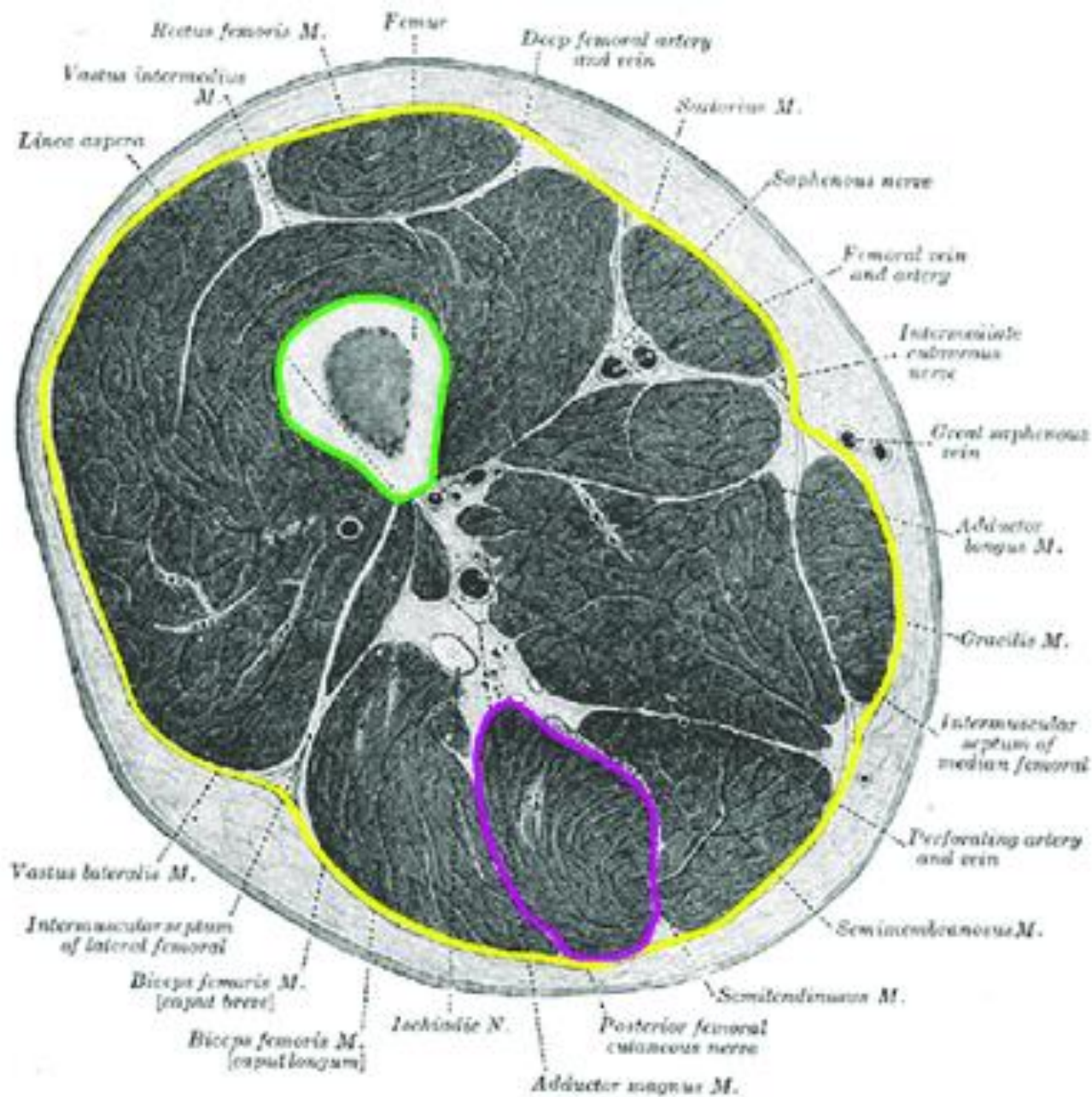
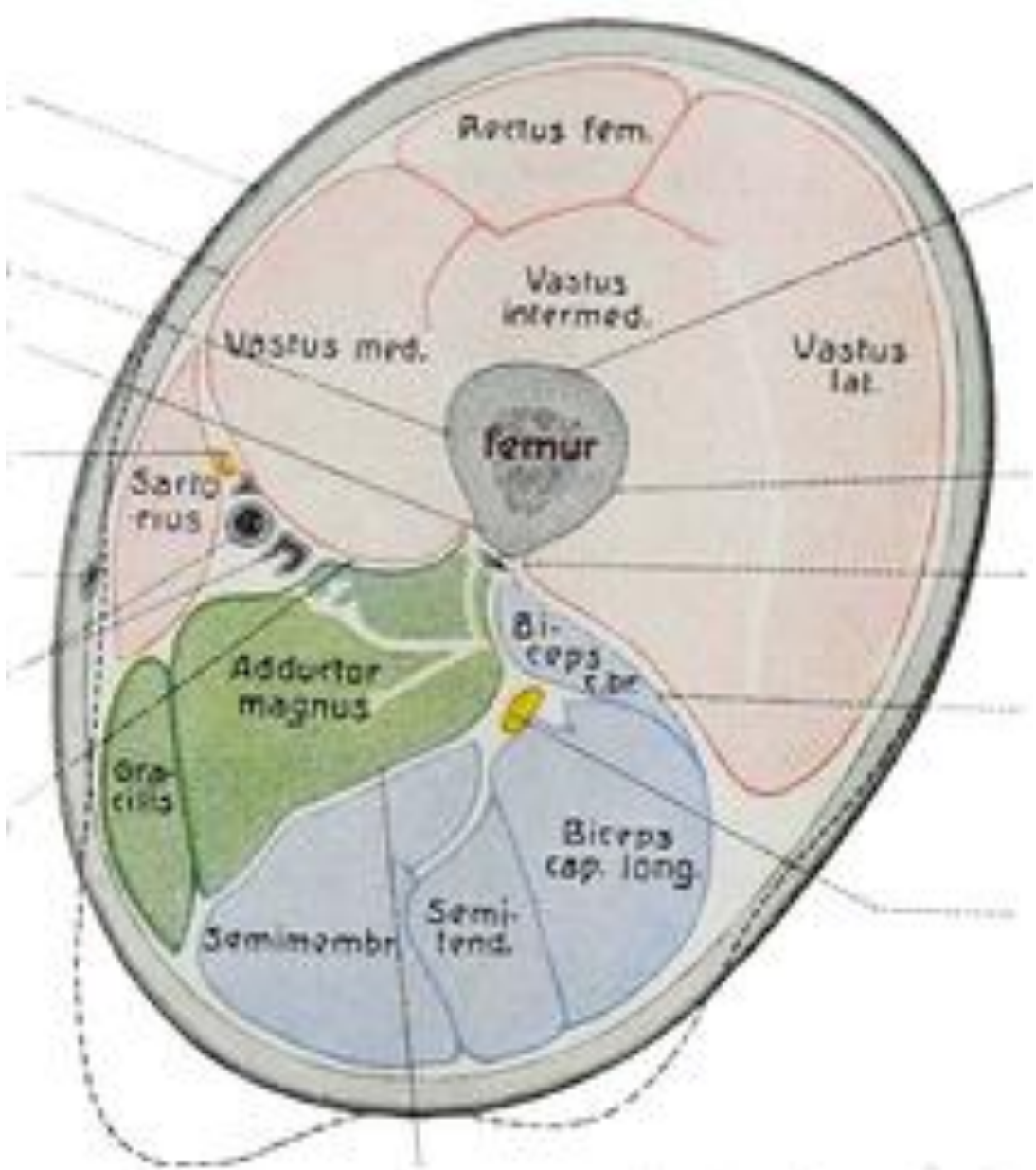


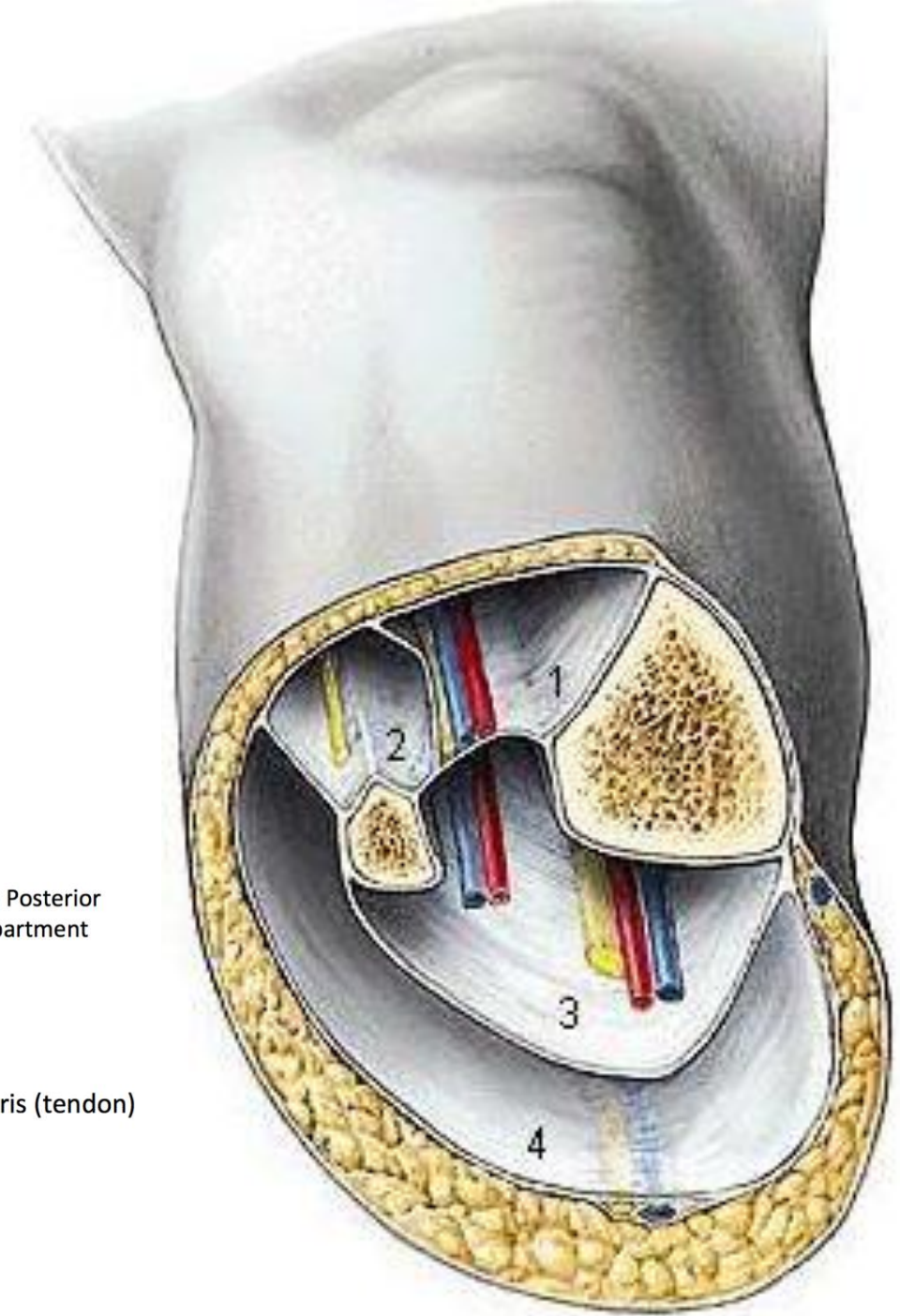
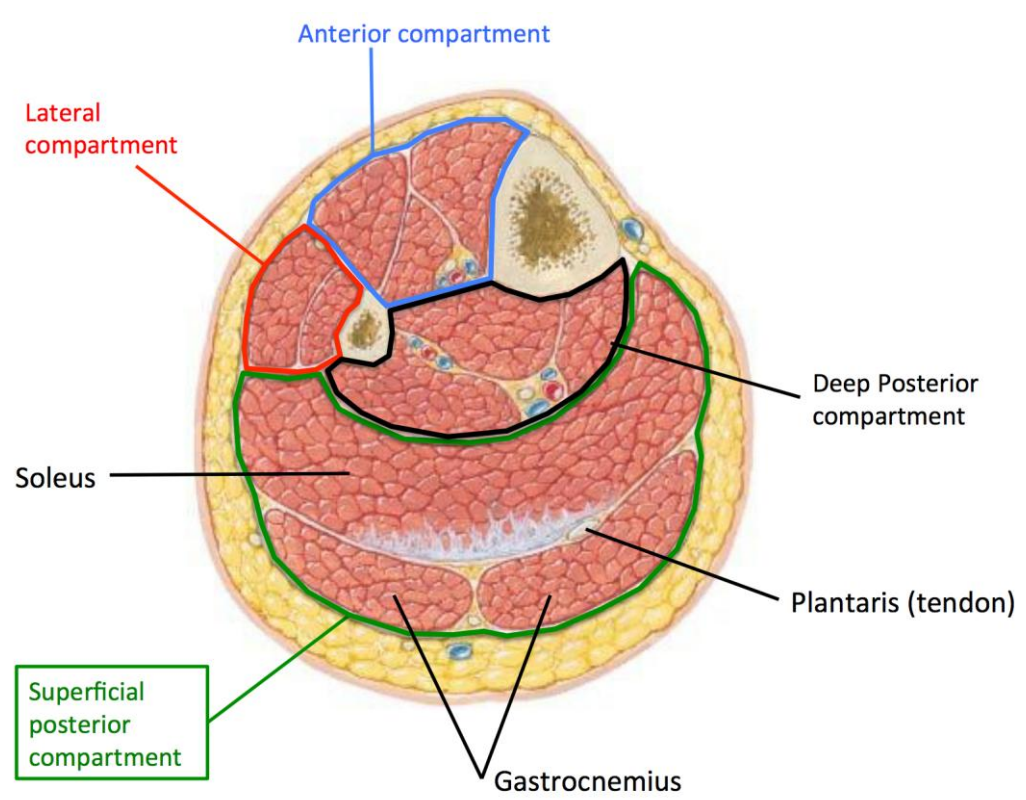
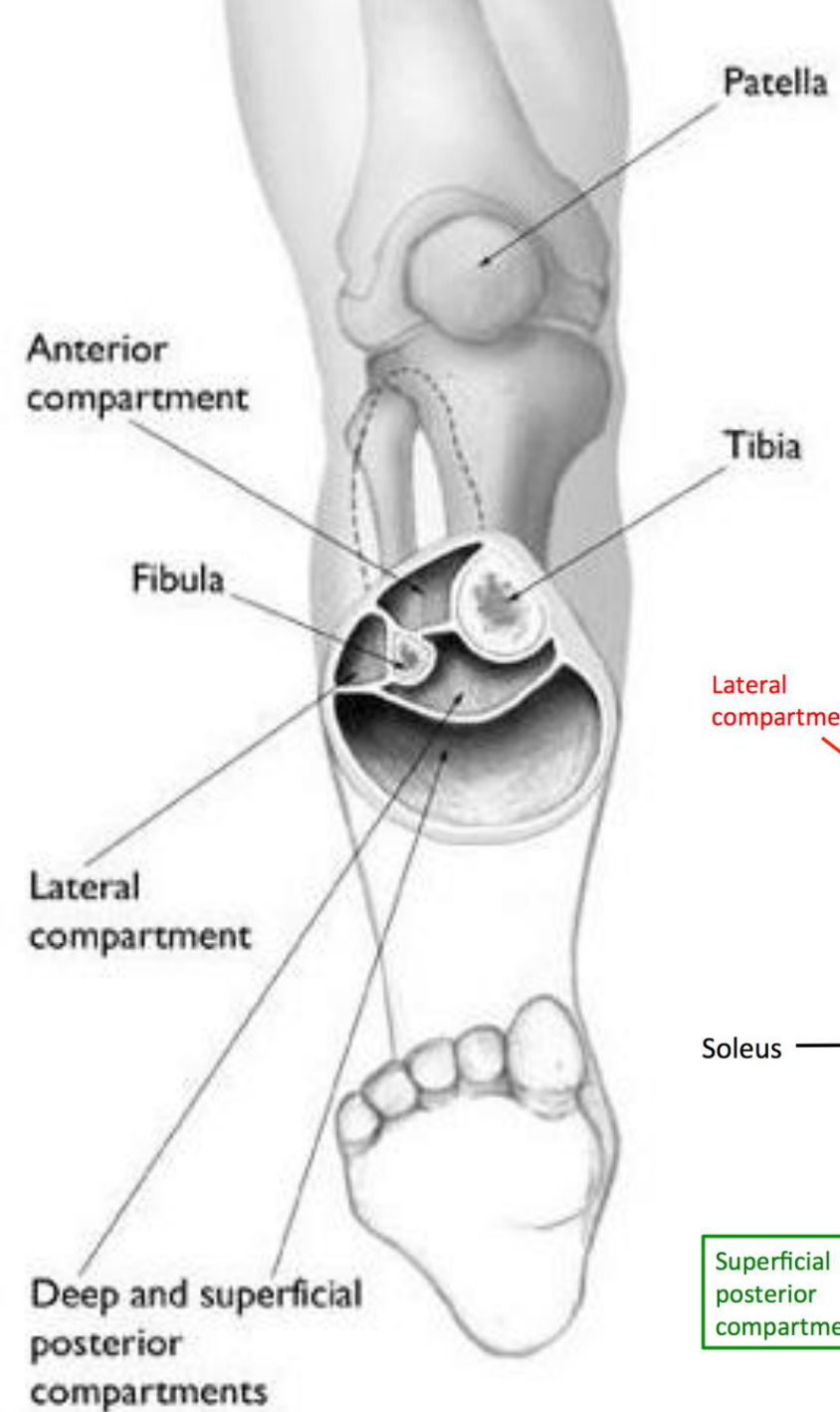
SUPERFICIAL, PERFORATING AND DEEP VEINS













Compartments in lower leg

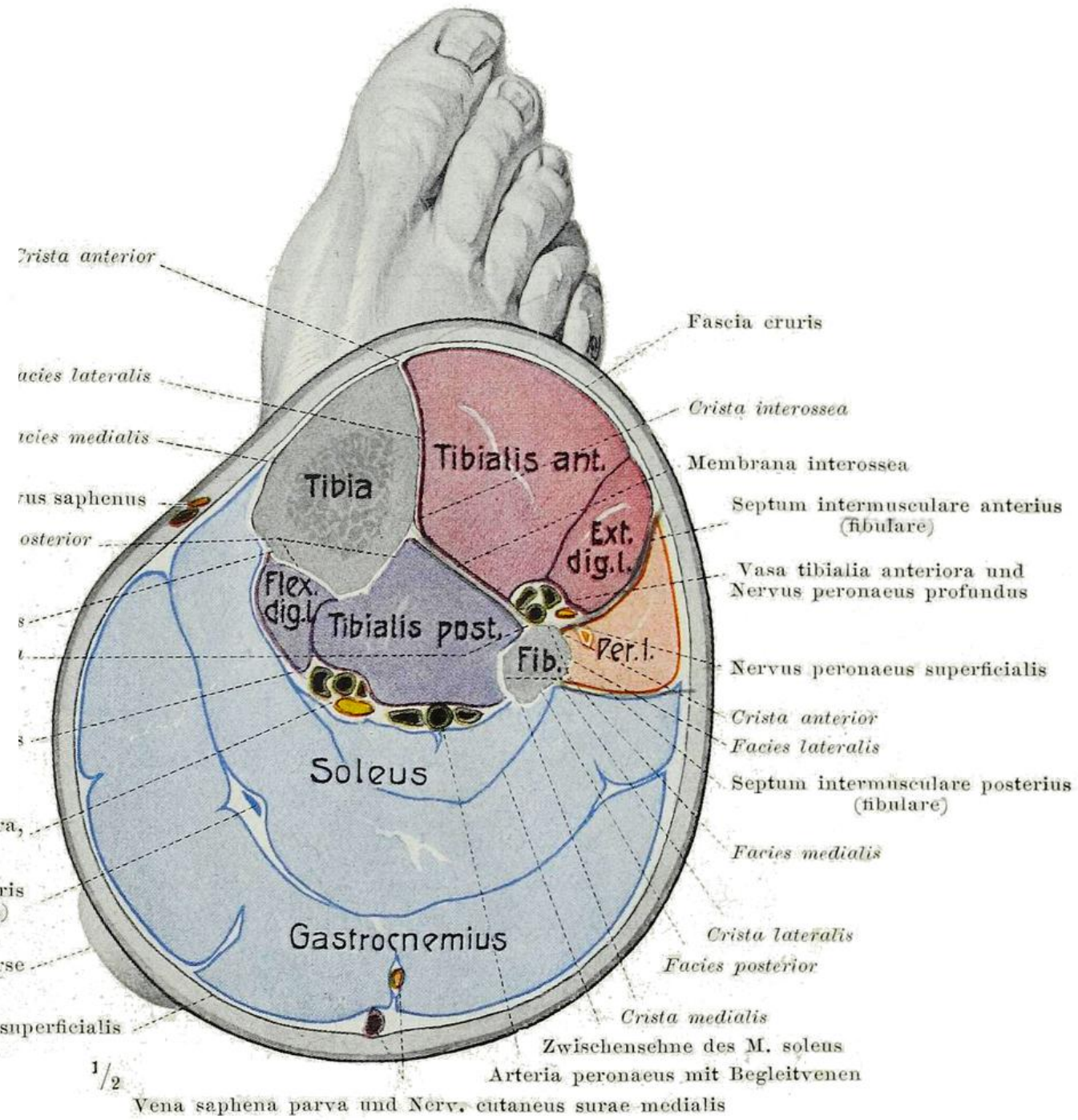
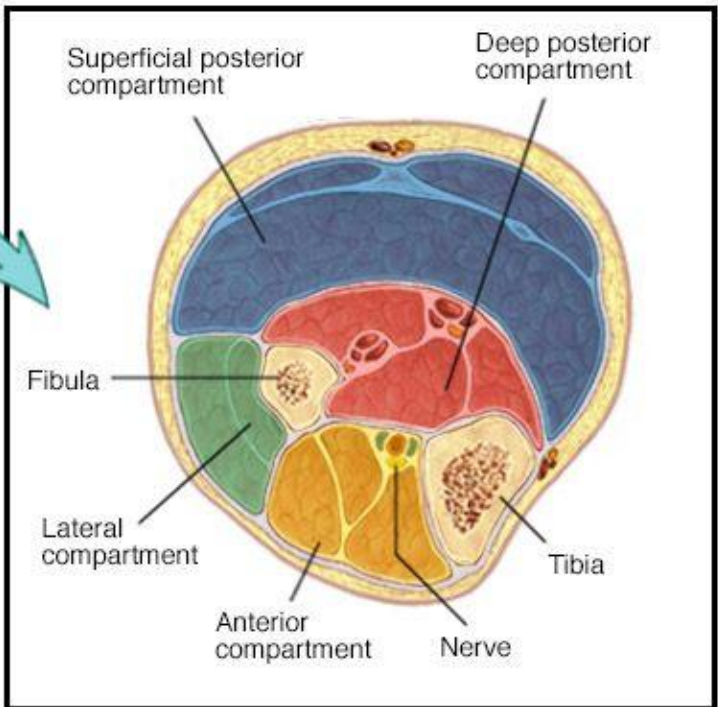
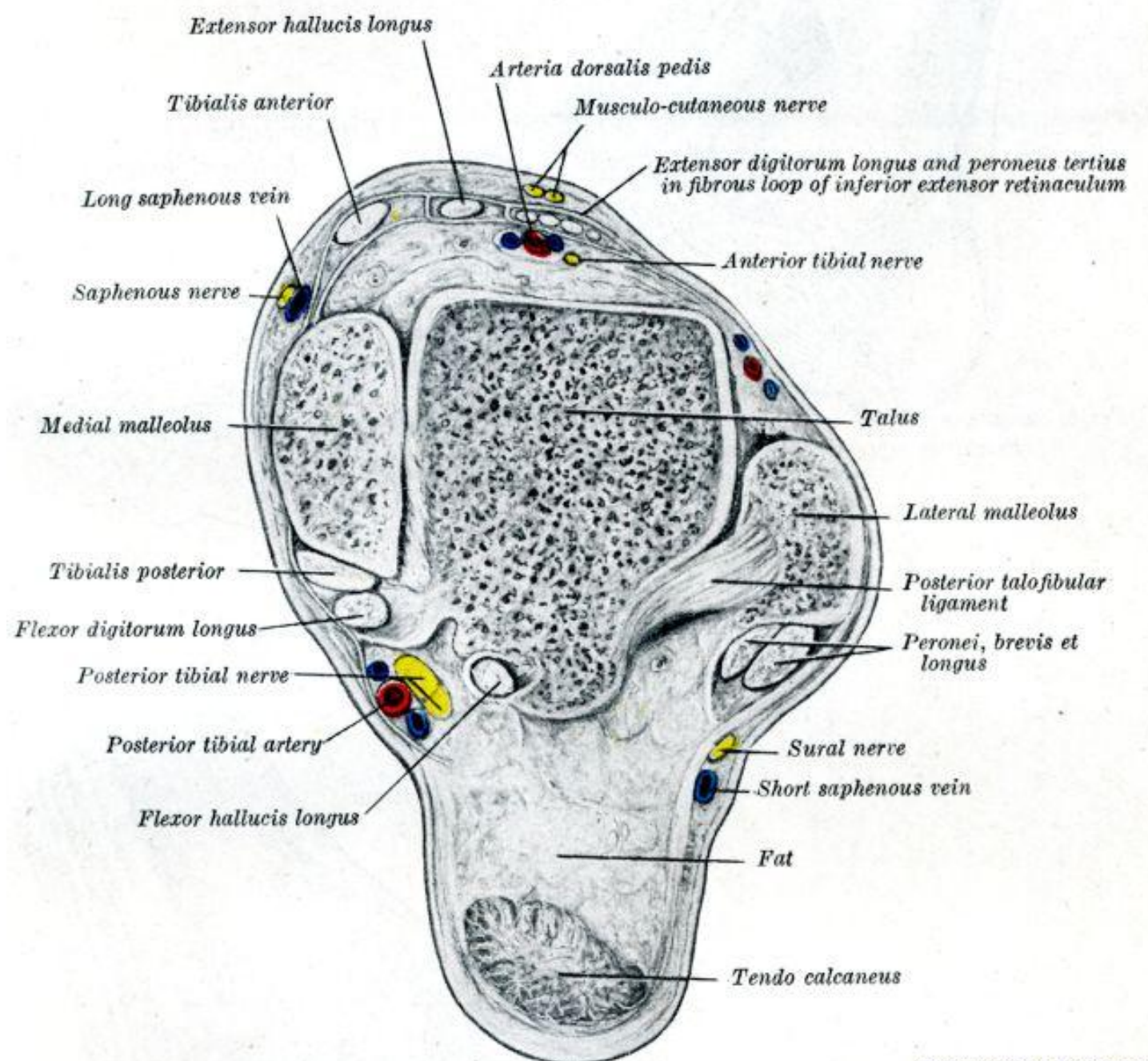
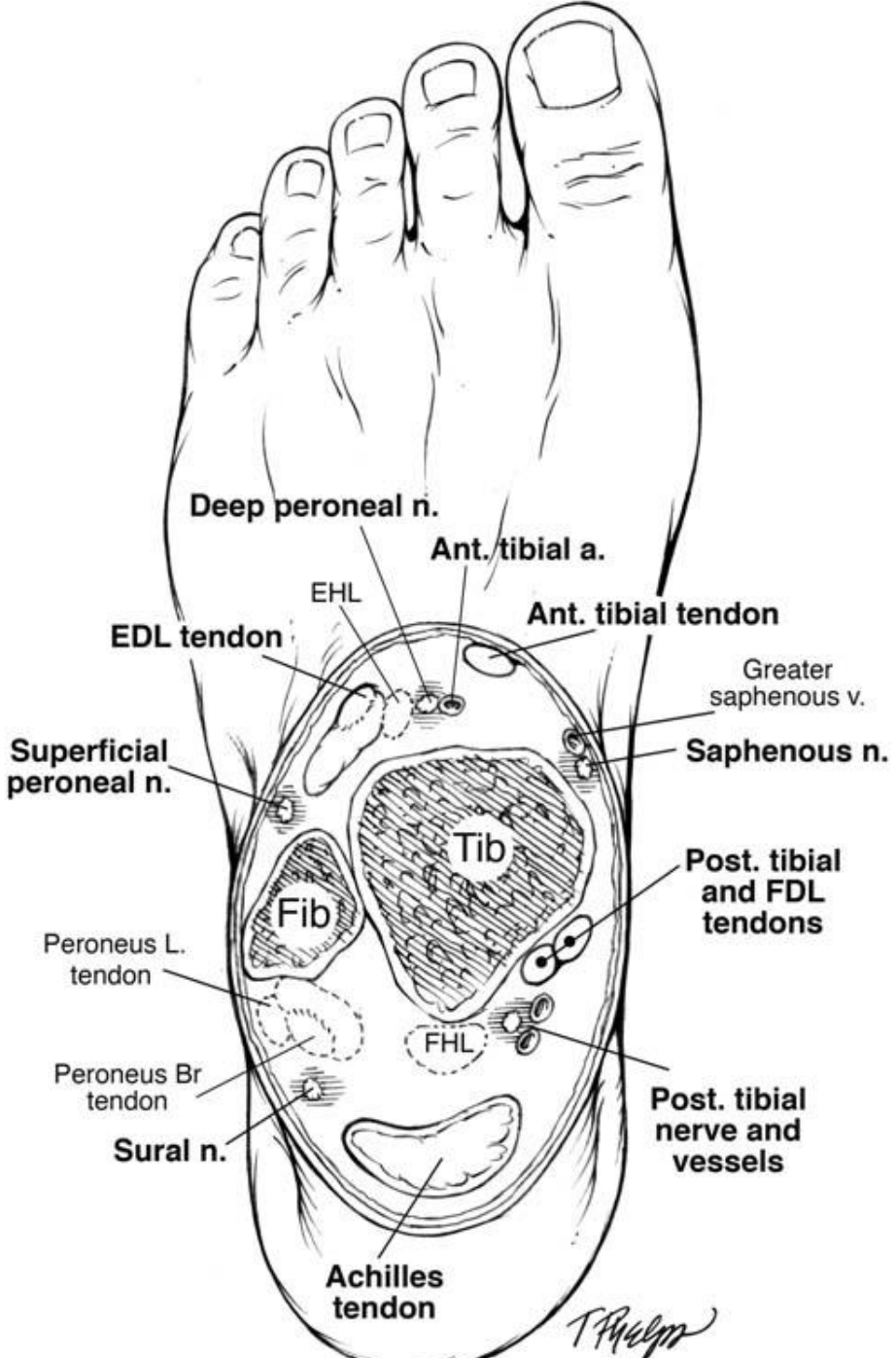
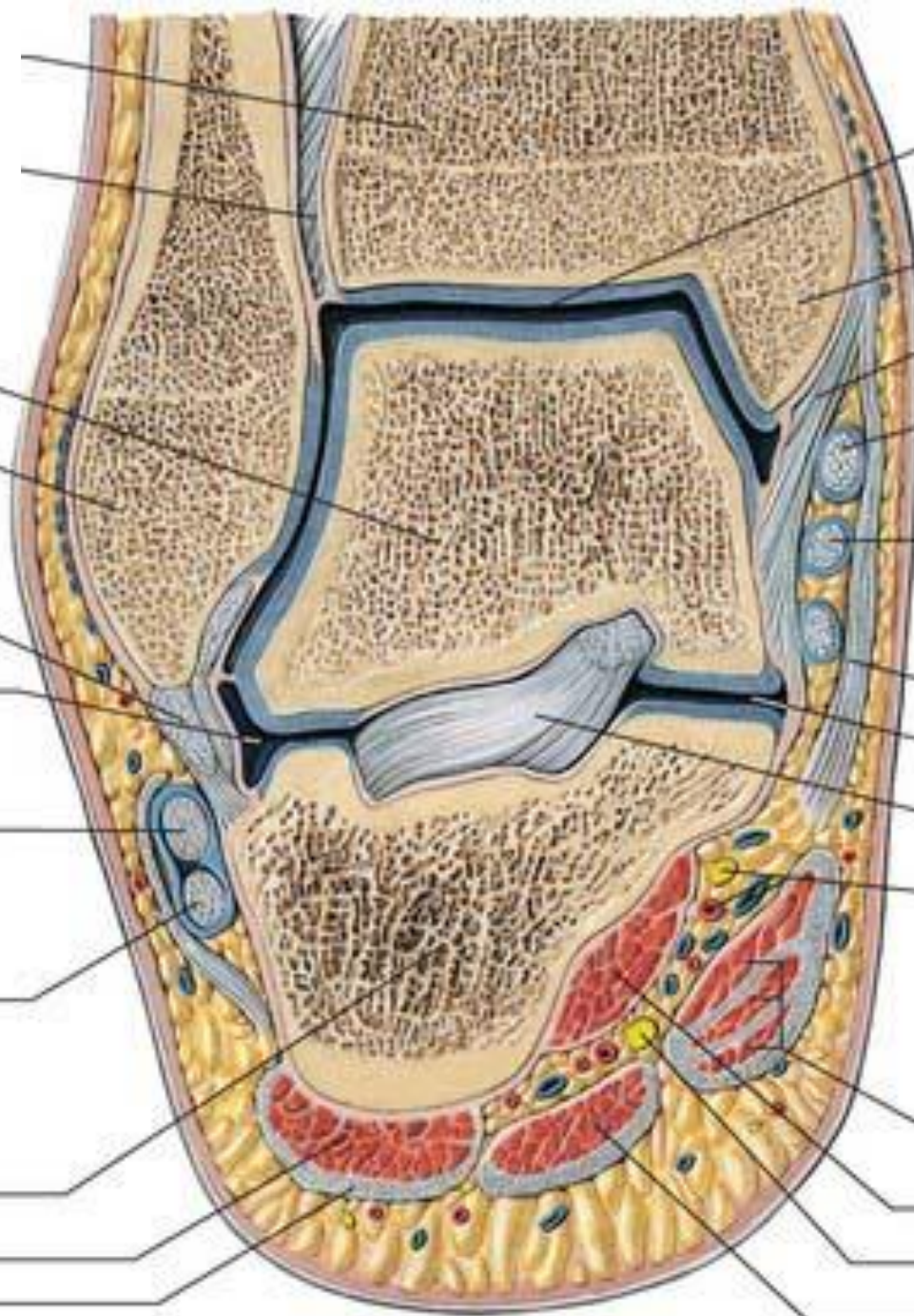


FIG. 661.—Transverse section through the lower part of the ankle-joint.



Plane of section

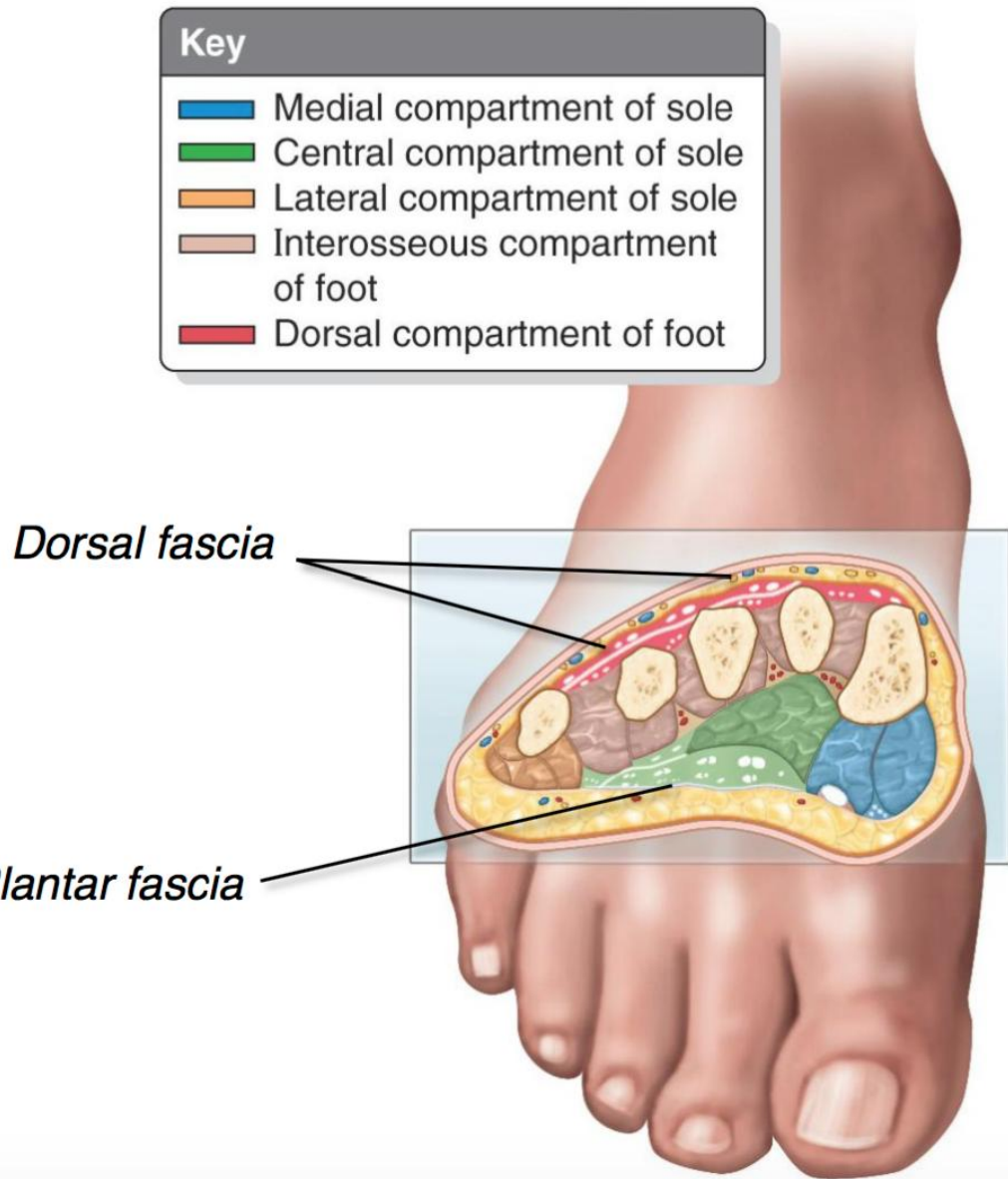
- Talus, body
- Fibula, lateral malleolus
- Calcaneofibular ligament
- Subtalar joint (talocalcaneal joint)
- Tendon of fibularis brevis
- Tendon of fibularis longus
- Calcaneus
- Abductor digiti minimi
- Plantar aponeurosis



- Ankle joint
- Tibia, medial malleolus
- Medial ligament (deltoid ligament),
tibiocalcaneal part
- Tendon of tibialis posterior
- Tendon of flexor digitorum longus
- Flexor retinaculum
- Subtalar joint (talocalcaneal joint)
- Interosseus talocalcaneal ligament
- Medial plantar nerve and vessels
- Abductor hallucis
- Flexor accessorius
- Lateral plantar nerve
- Flexor digitorum brevis

Key

- Medial compartment of sole
- Central compartment of sole
- Lateral compartment of sole
- Interosseous compartment of foot
- Dorsal compartment of foot



Fascial compartments

- Medial:** Hallucis (1st digit) muscles, medial plantar a/n
- Central:** Digitorum flexors, lumbricals, quadratus plantae, lateral plantar a/n
- Lateral:** Digiti minimi (5th digit) muscles
- Interosseus:** Metatarsals, interossei, deep plantar and metatarsal vessels
- Dorsal:** Extensors

