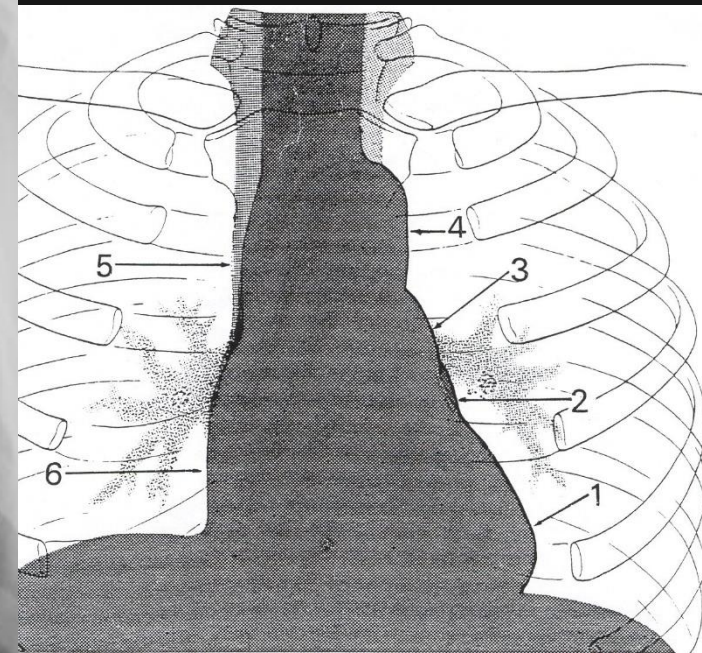
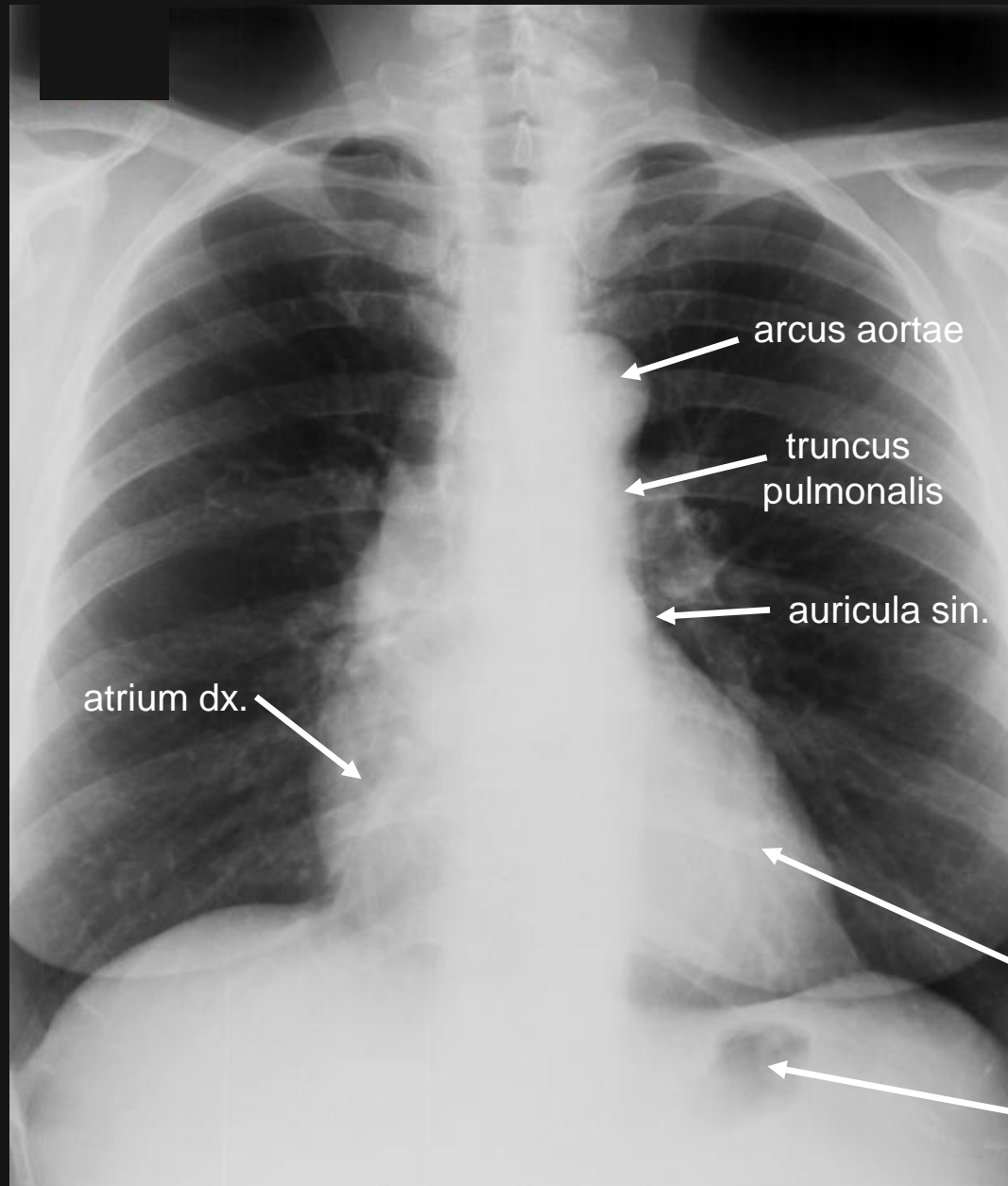


**Srdce a krevní cévy**

**Heart and blood vessels**

# Rentgen srdce / X-ray of the heart *předožadní pohled / posteroanterior view*

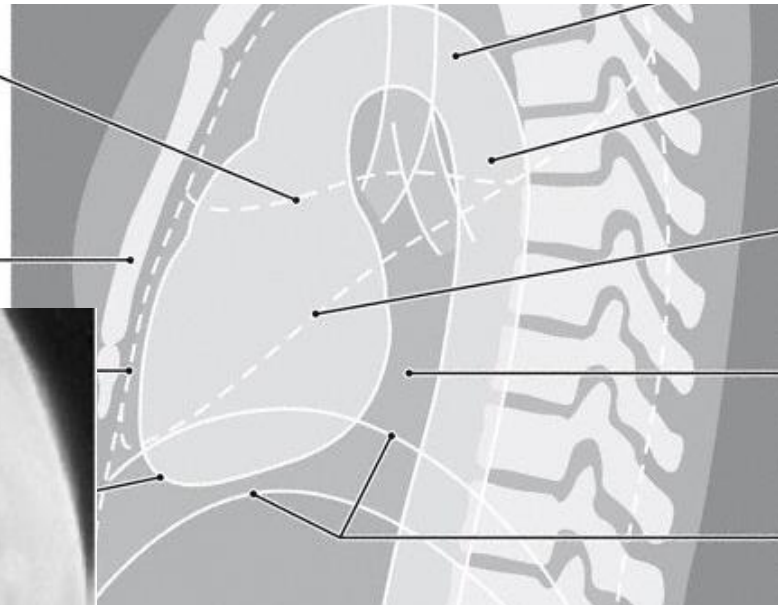


# Rentgen srdce / X-ray of the heart – *posteroanterior view*



Fissura horizontalis pulmonis dextri

Corpus sterni

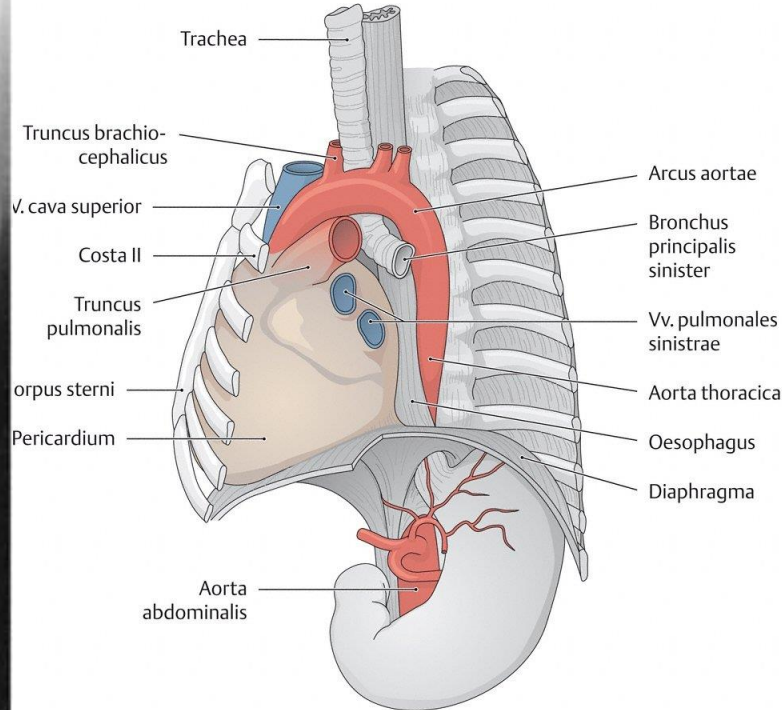


Aorta thoracica

Fissura obliqua pulmonis dextri

„Holzknechtovo okno“

Diaphragma (l.sin. et l. dx.)



Trachea

Truncus brachiocephalicus

V. cava superior

Costa II

Truncus pulmonalis

Corpus sterni

Pericardium

Aorta abdominalis

Arcus aortae

Bronchus principalis sinister

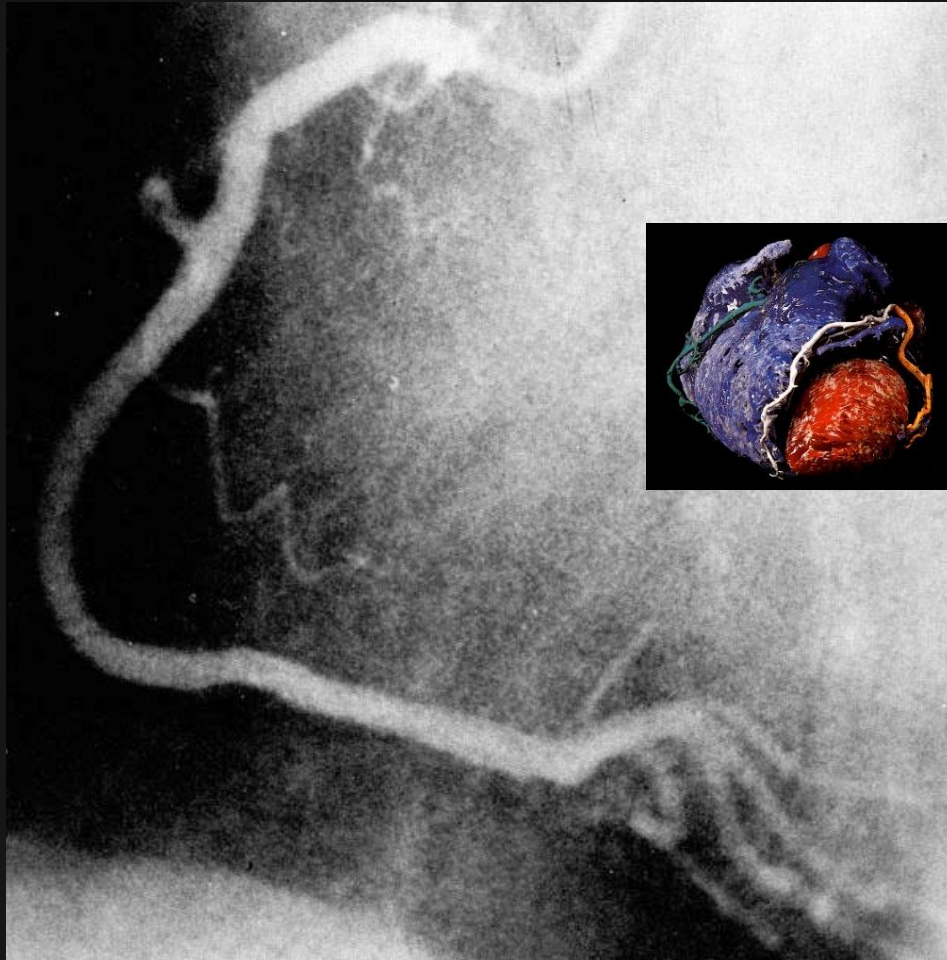
Vv. pulmonales sinistrae

Aorta thoracica

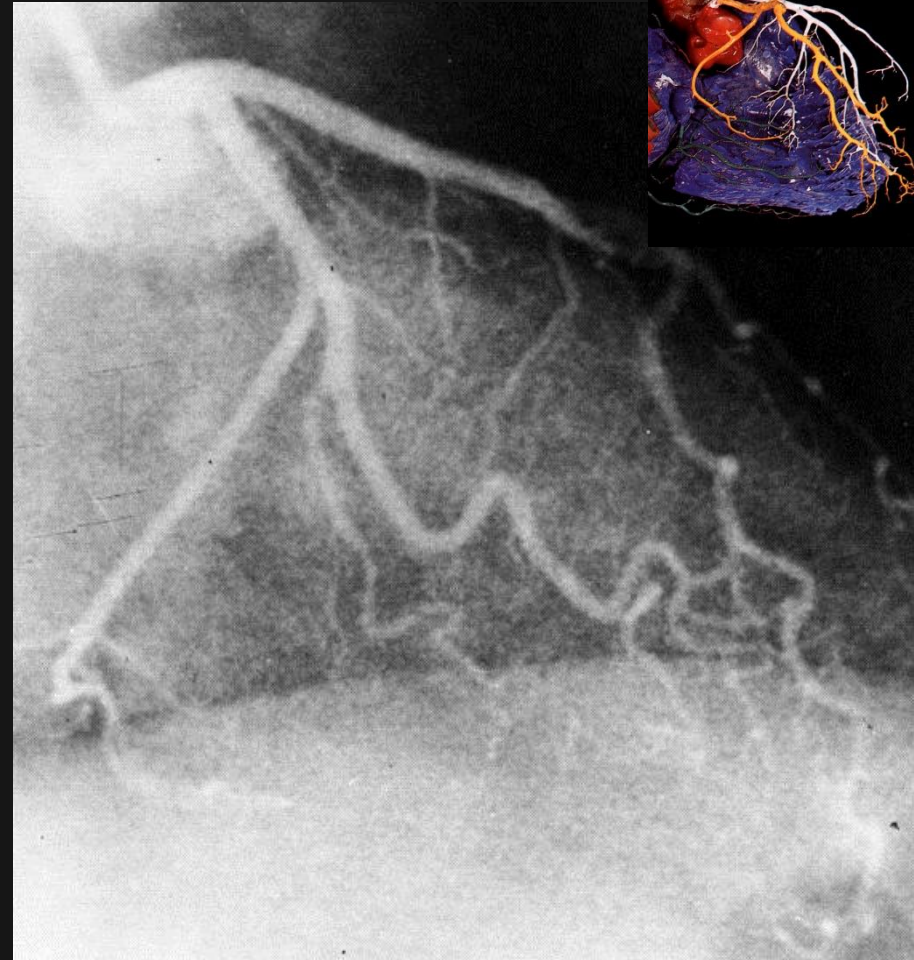
Oesophagus

Diaphragma

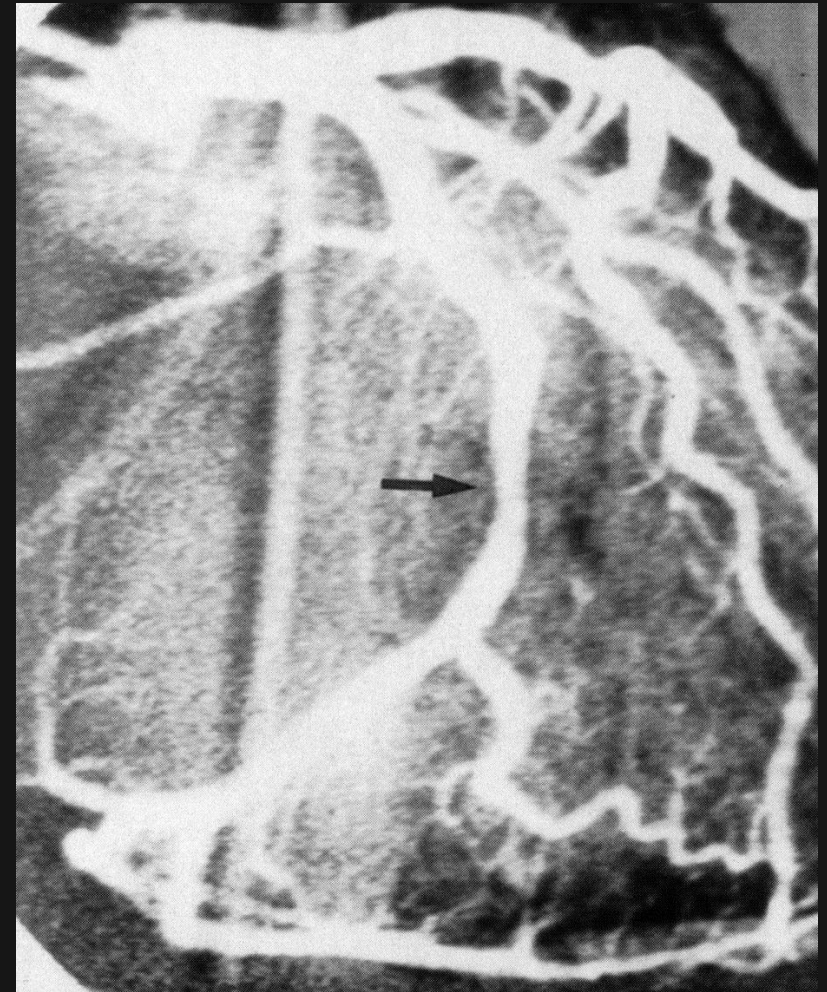
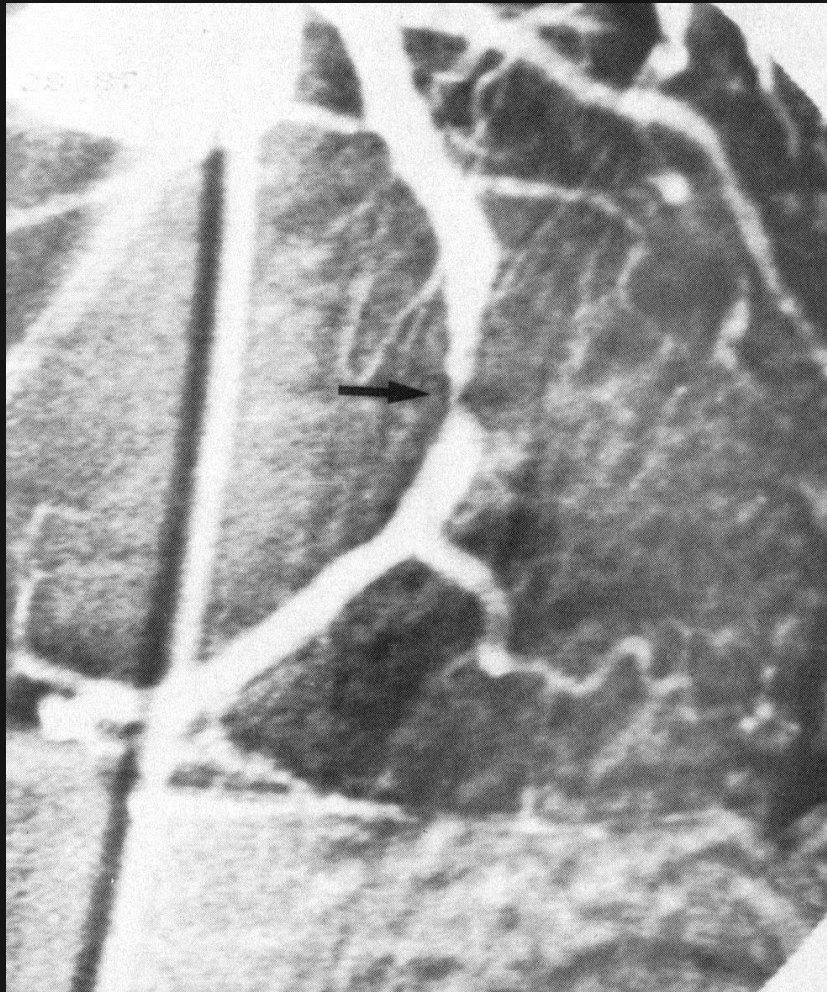
**Arteria coronaria dextra  
Koronarografie /  
Coronarography**



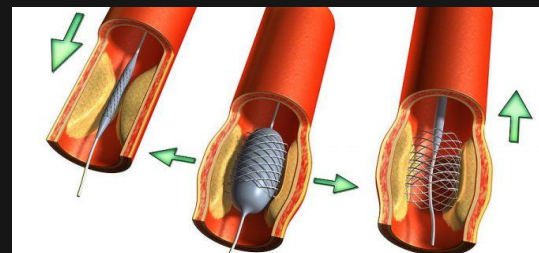
**Arteria coronaria sinistra  
Koronarografie /  
Coronarography**



# Perkutánní Transluminální Coronární Angioplastika (PTCA) Percutaneous Transluminal Coronary Angioplasty (PTCA)



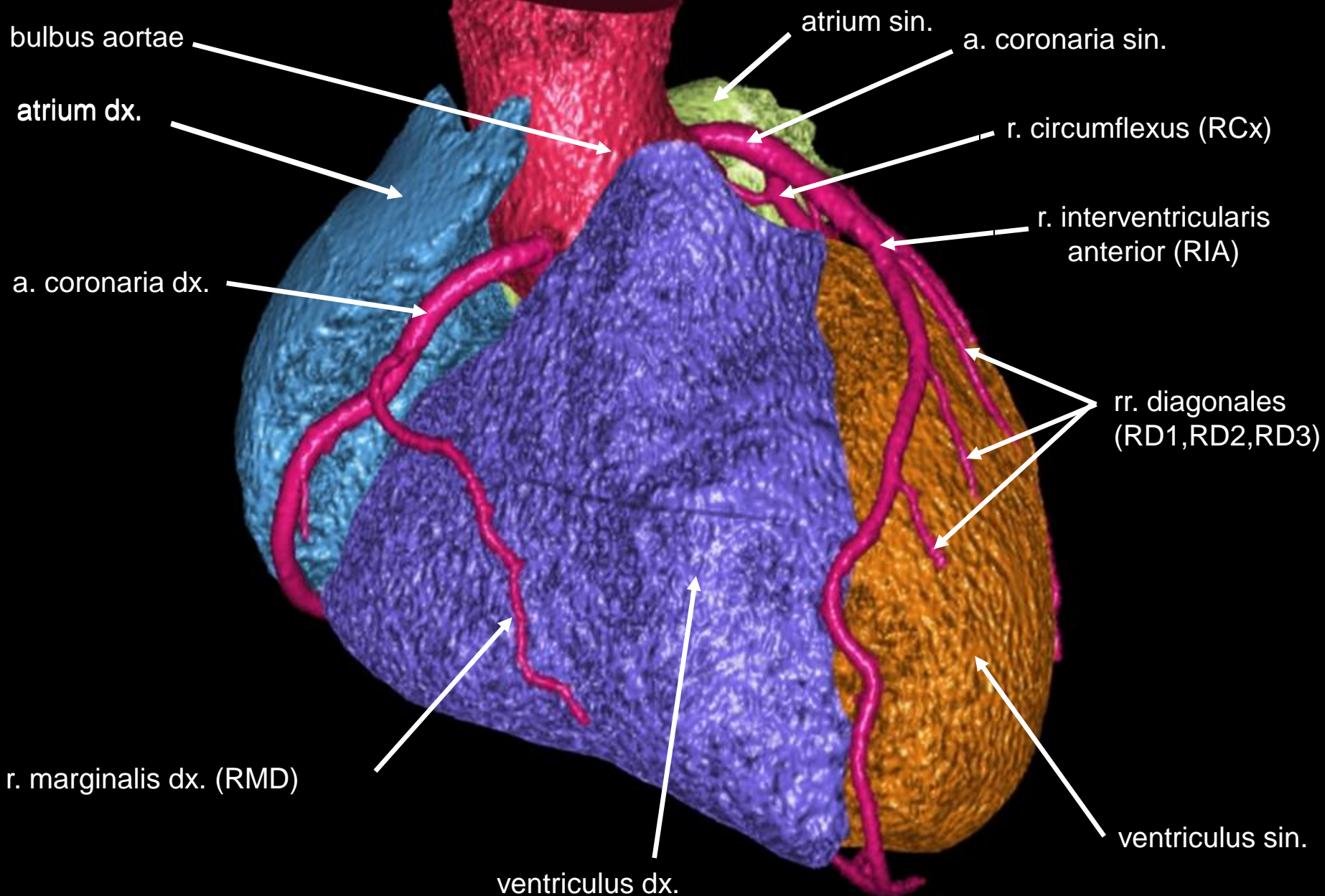
stenóza RIA / stenosis of anterior  
interventricular ramus  
*angiografie s jódovou kontrastní látkou*  
*angiography with iodine contrast fluid*



dilatace stenózy  
metodou PTCA  
dilation of stenosis  
with PTCA

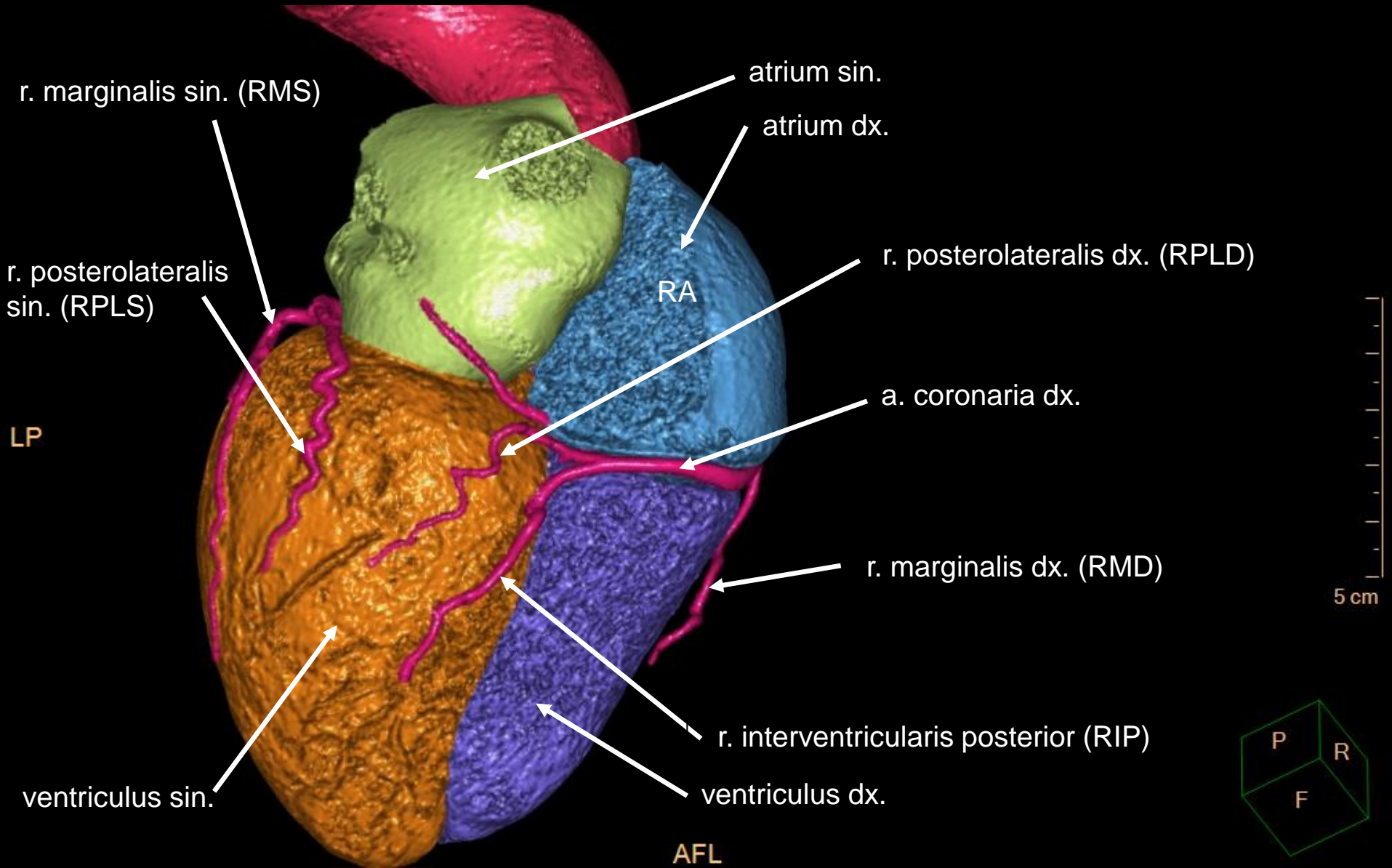
# 3D CT koronarografie / 3D CT coronarography

## *pohled zepředu / anterior view*

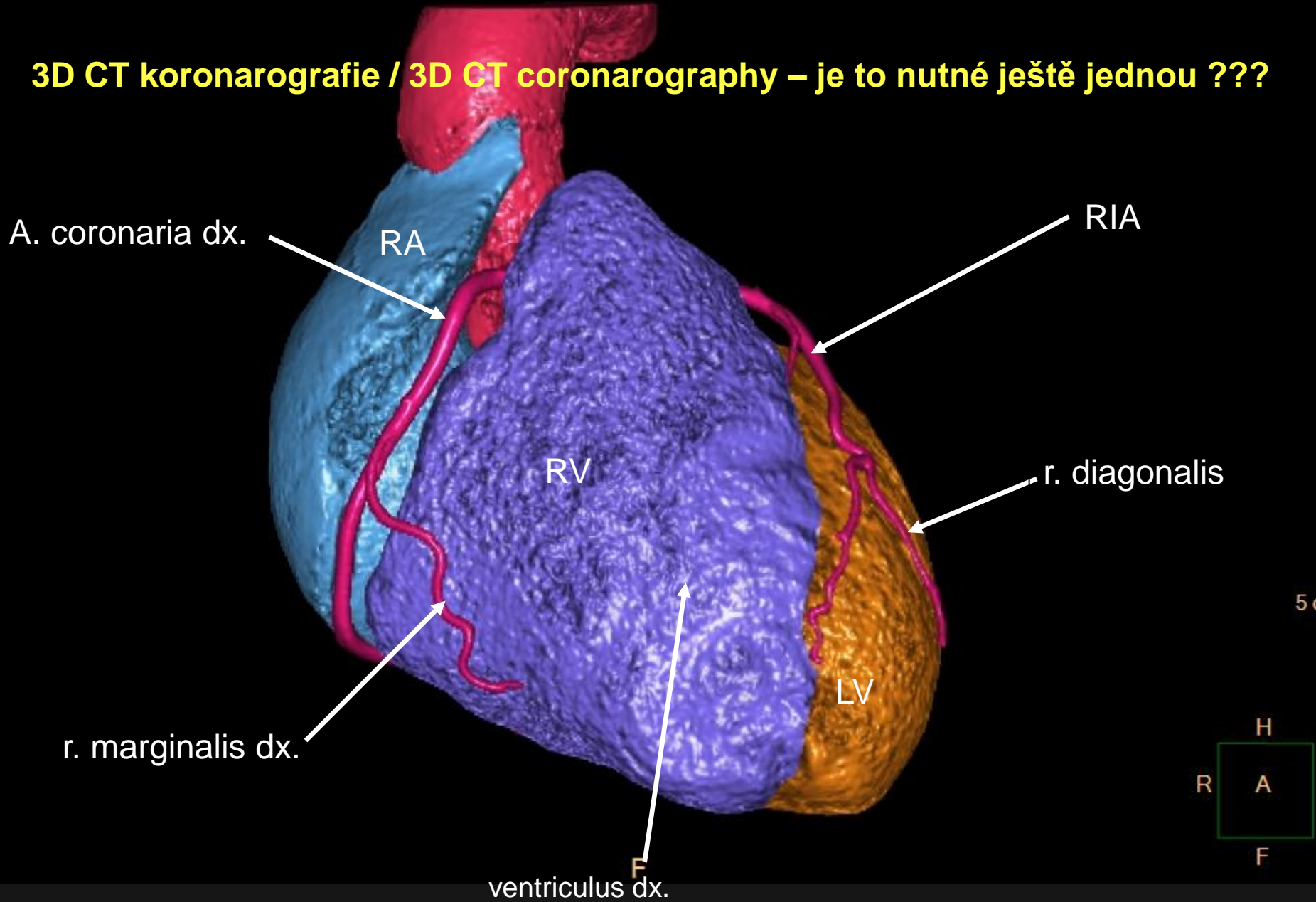


# 3D CT koronarografie / 3D CT coronarography

## *pohled zdola / inferior view*



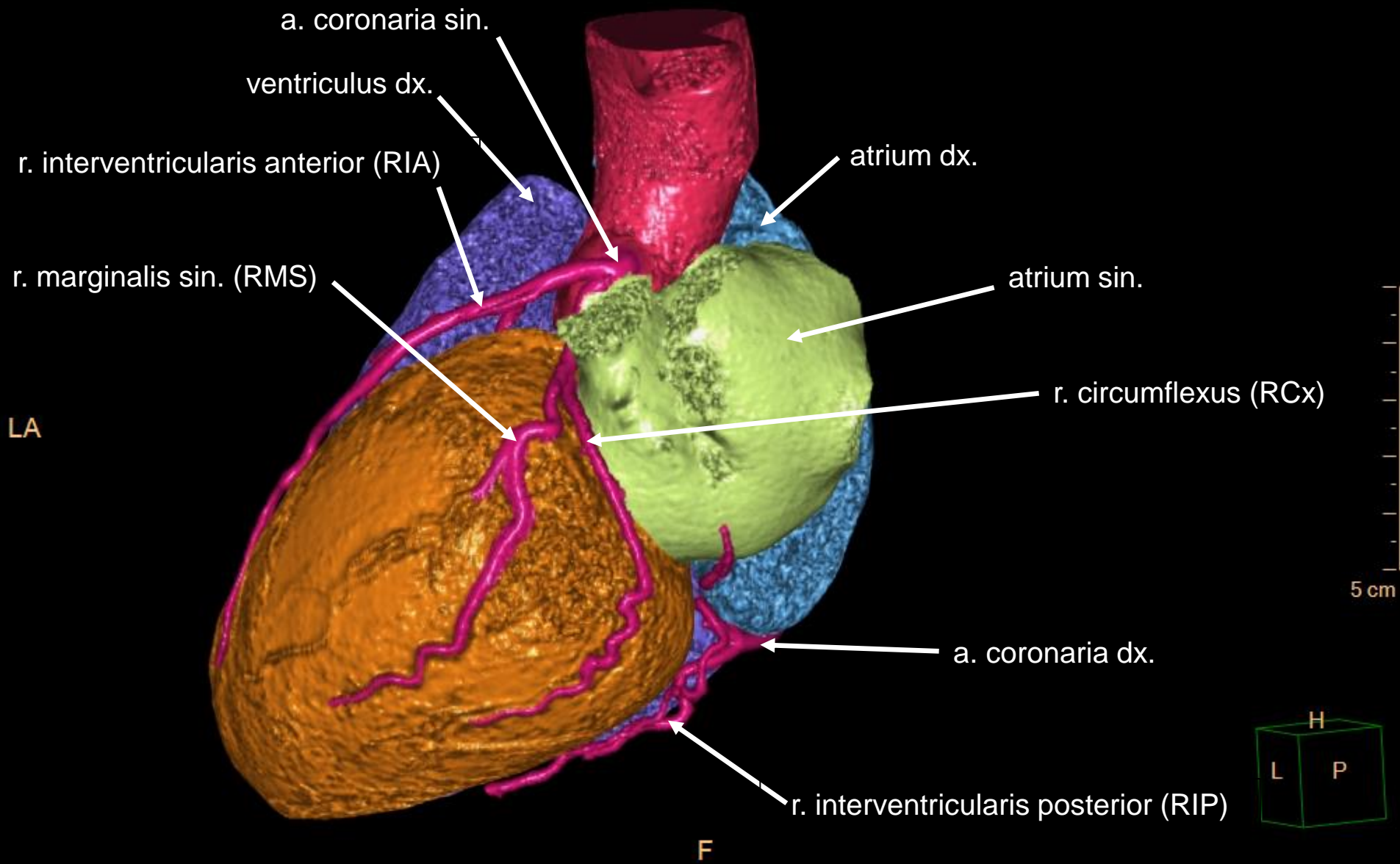
# 3D CT koronarografie / 3D CT coronarography – je to nutné ještě jednou ???





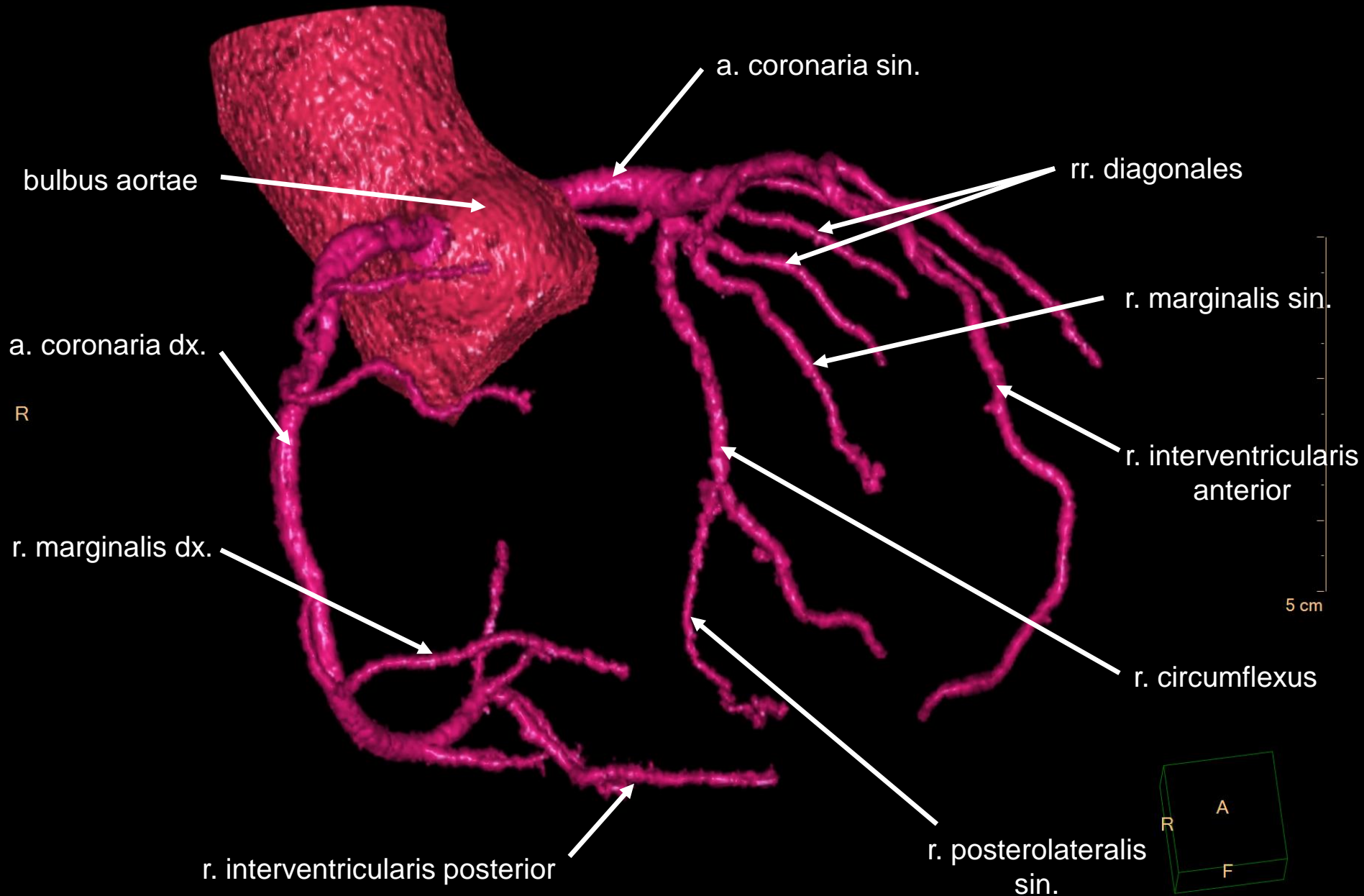
# 3D CT koronarografie / 3D CT coronarography

## *pohled zleva / left view*



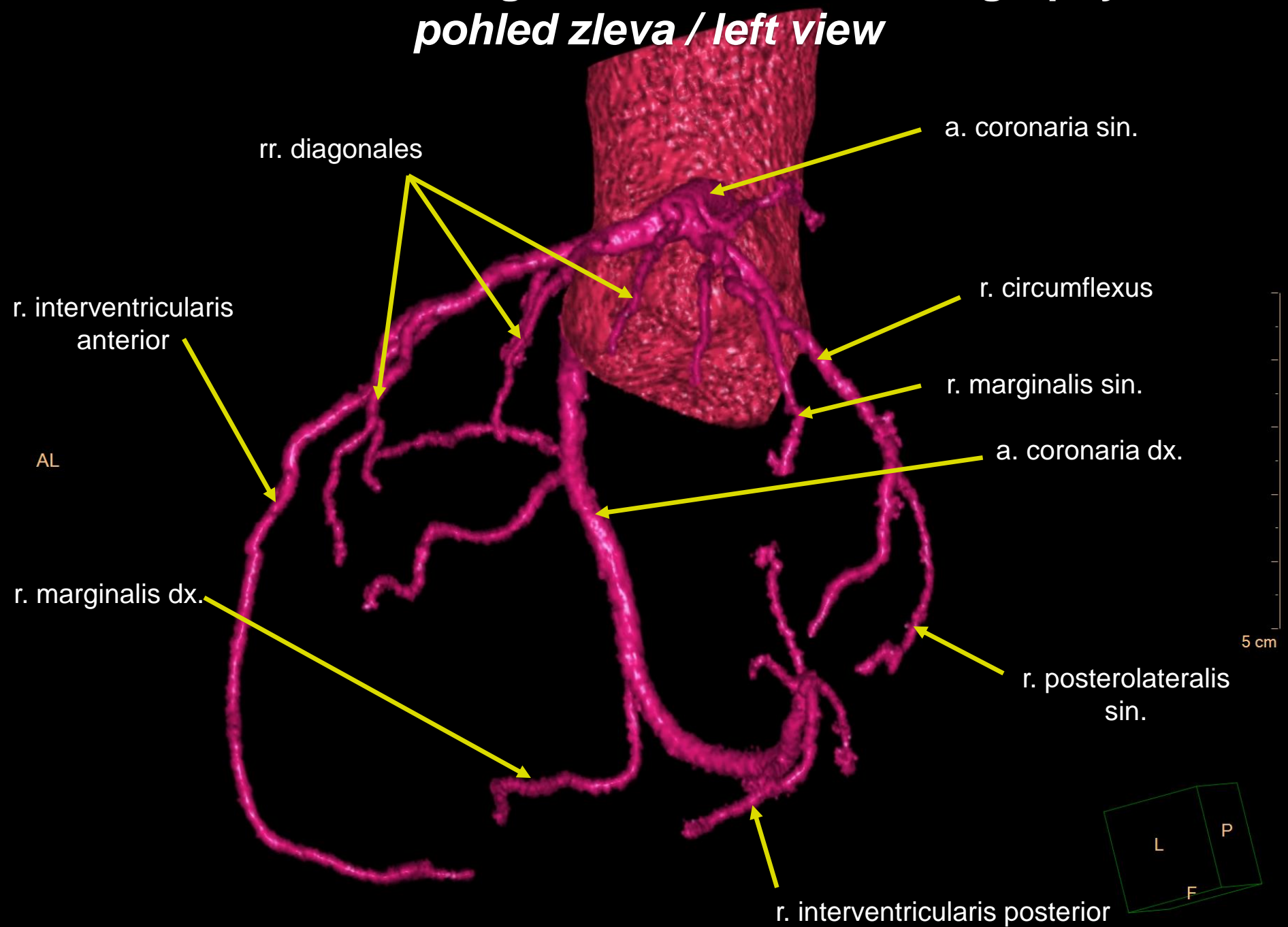
# 3D CT koronarografie / 3D CT coronarography

## *pohled zprava / right view*



# 3D CT koronarografie / 3D CT coronarography

## *pohled zleva / left view*



# 3D CT koronarografie / 3D CT coronarography

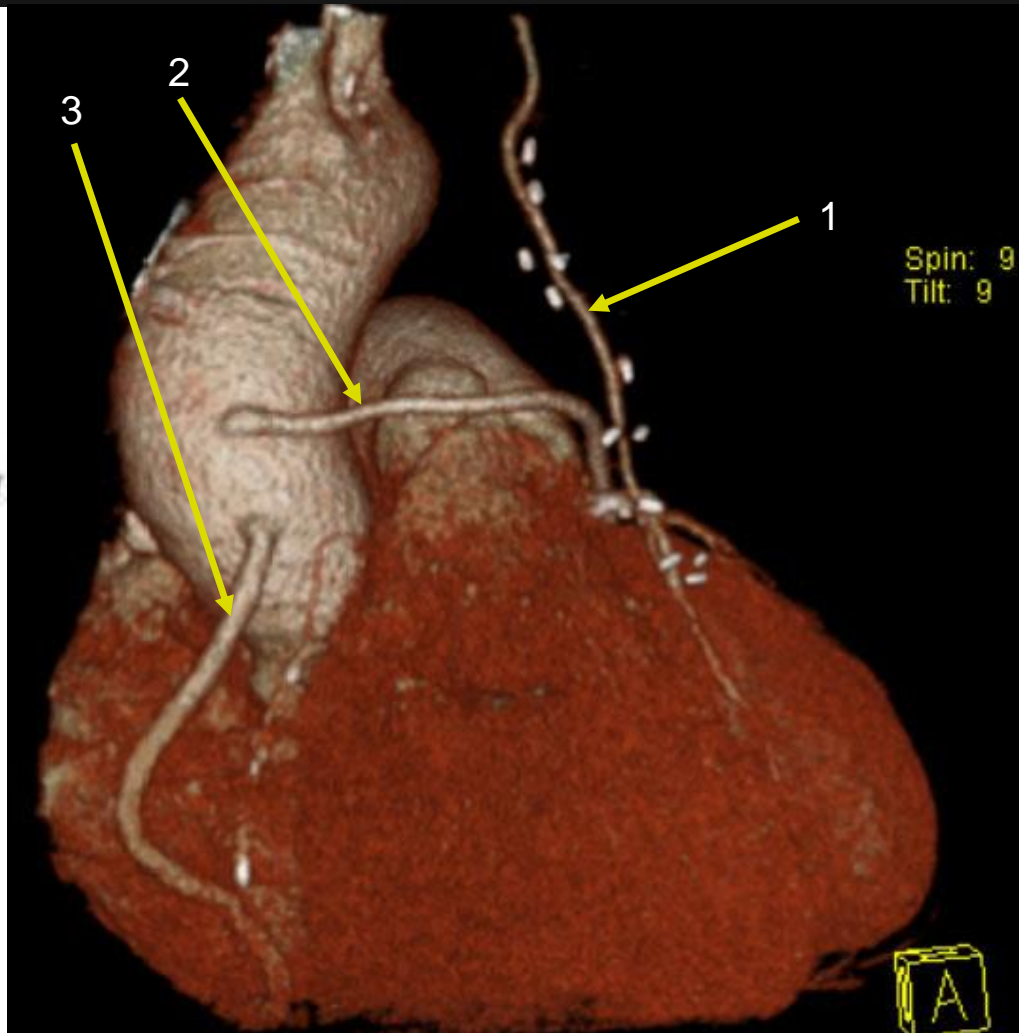
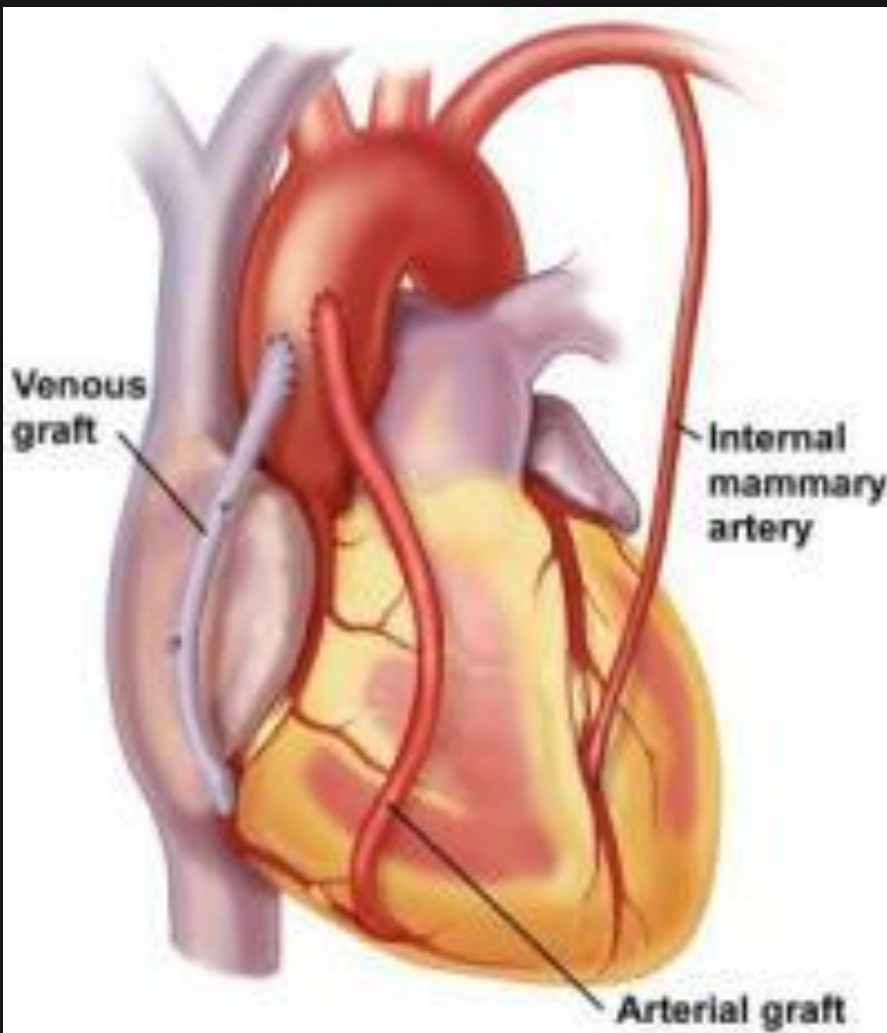
Bypass z a. thoracica interna sinistra na RIA („LIMA-RIA“) (1)

Bypass using a. thoracica interna sinistra to RIA („LIMA-RIA“) (1)

Aortokoronární bypass pomocí štěpu z v. saphena magna na RCx (2) a ACR (3)

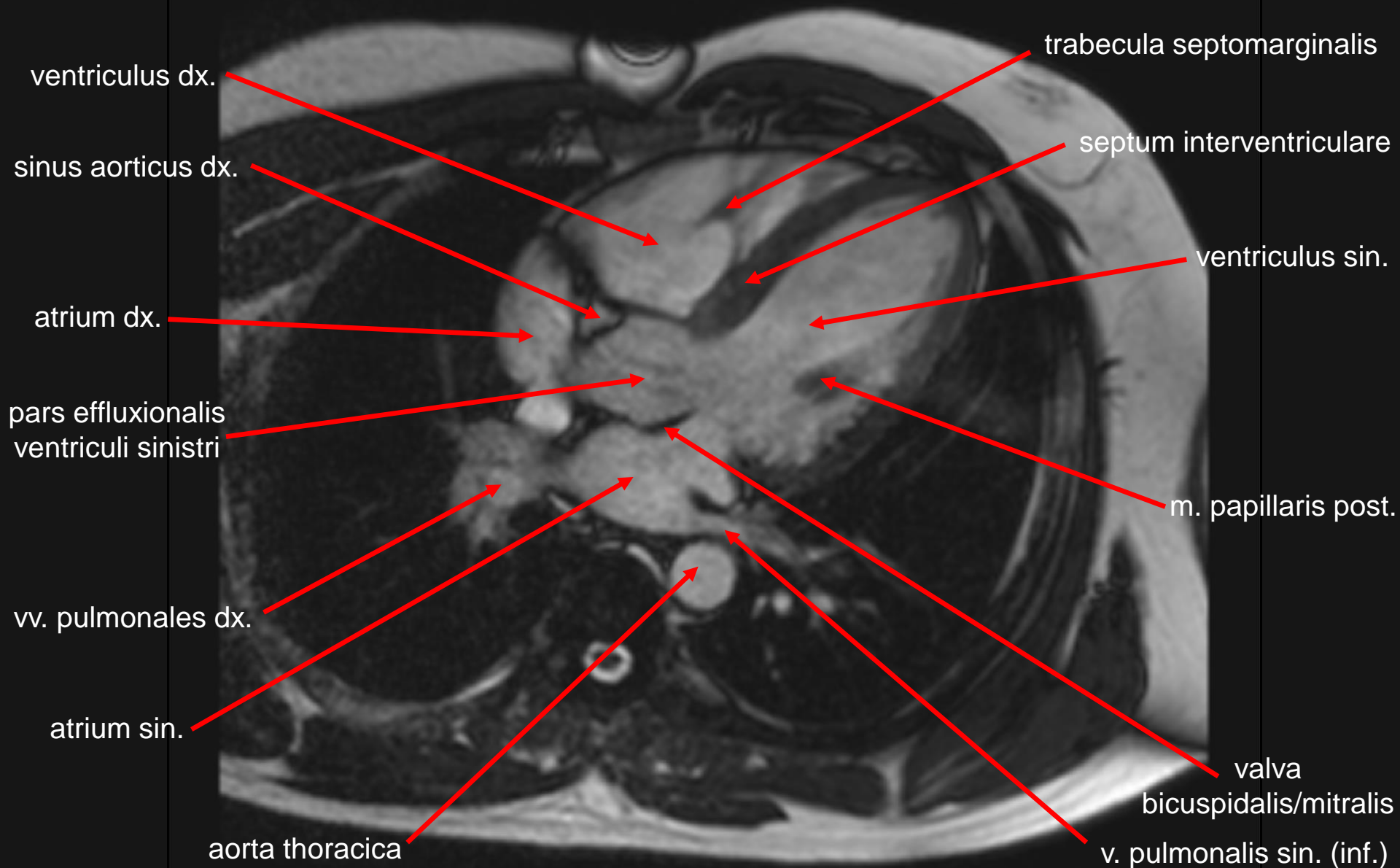
Aortocoronary bypass using v. saphena magna graft to RCx (2) and ACR (3)

*pohled zepředu / anterior view*



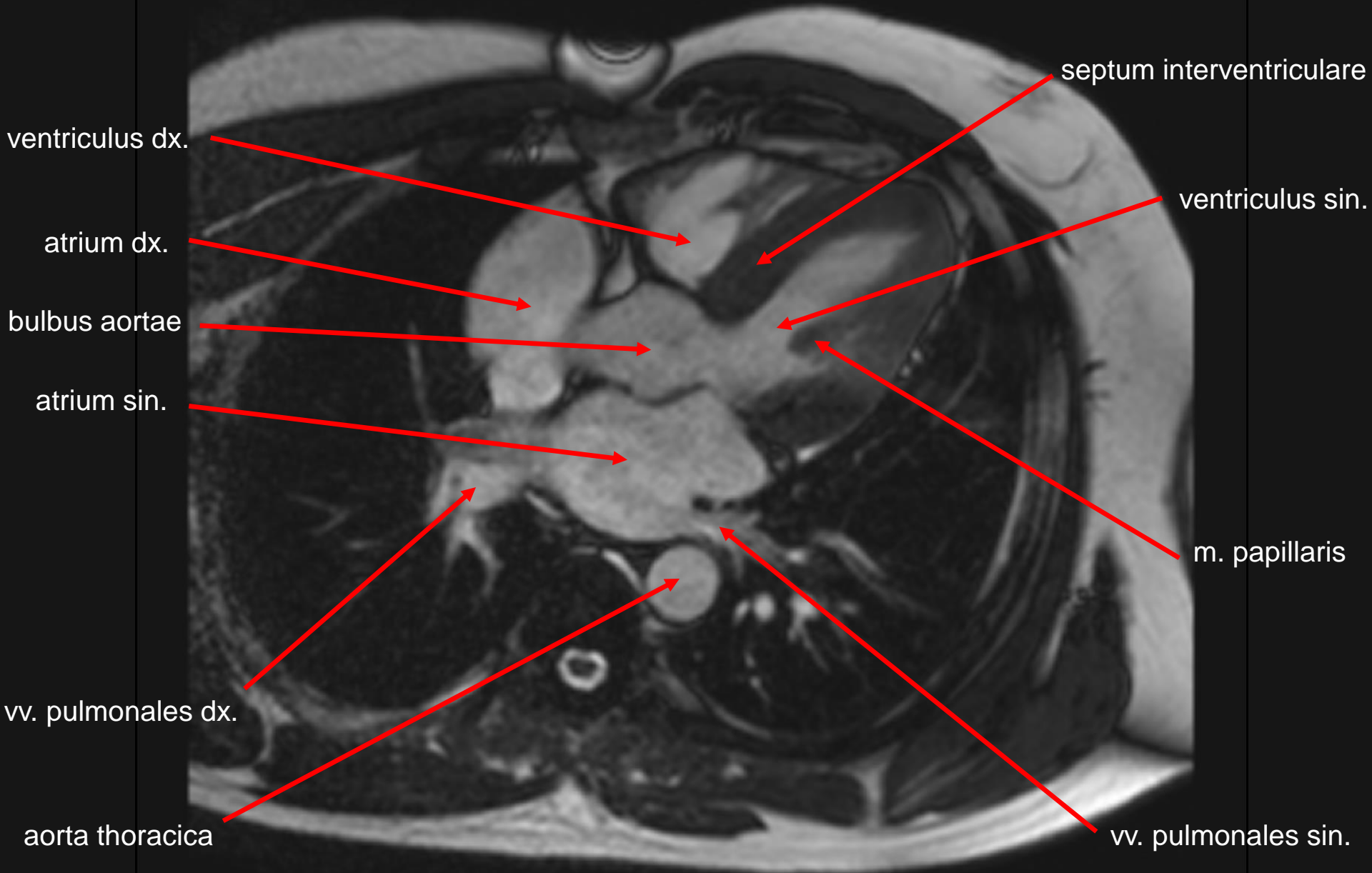
# MR srdce / MRI of the heart

## *transverzální řez / transverse section*



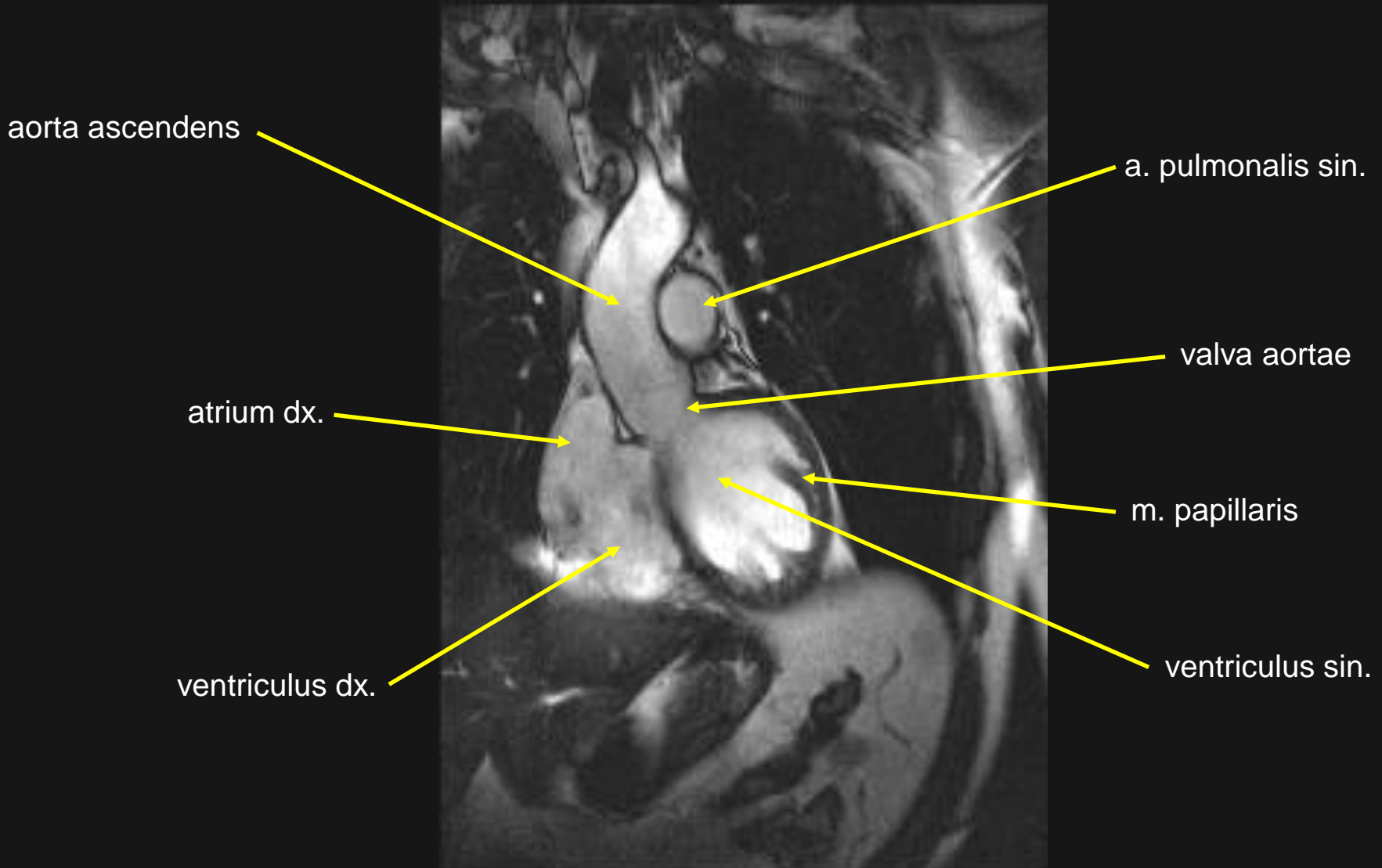
# MR srdce / MRI of the heart

## *transverzální řez / transverse section*



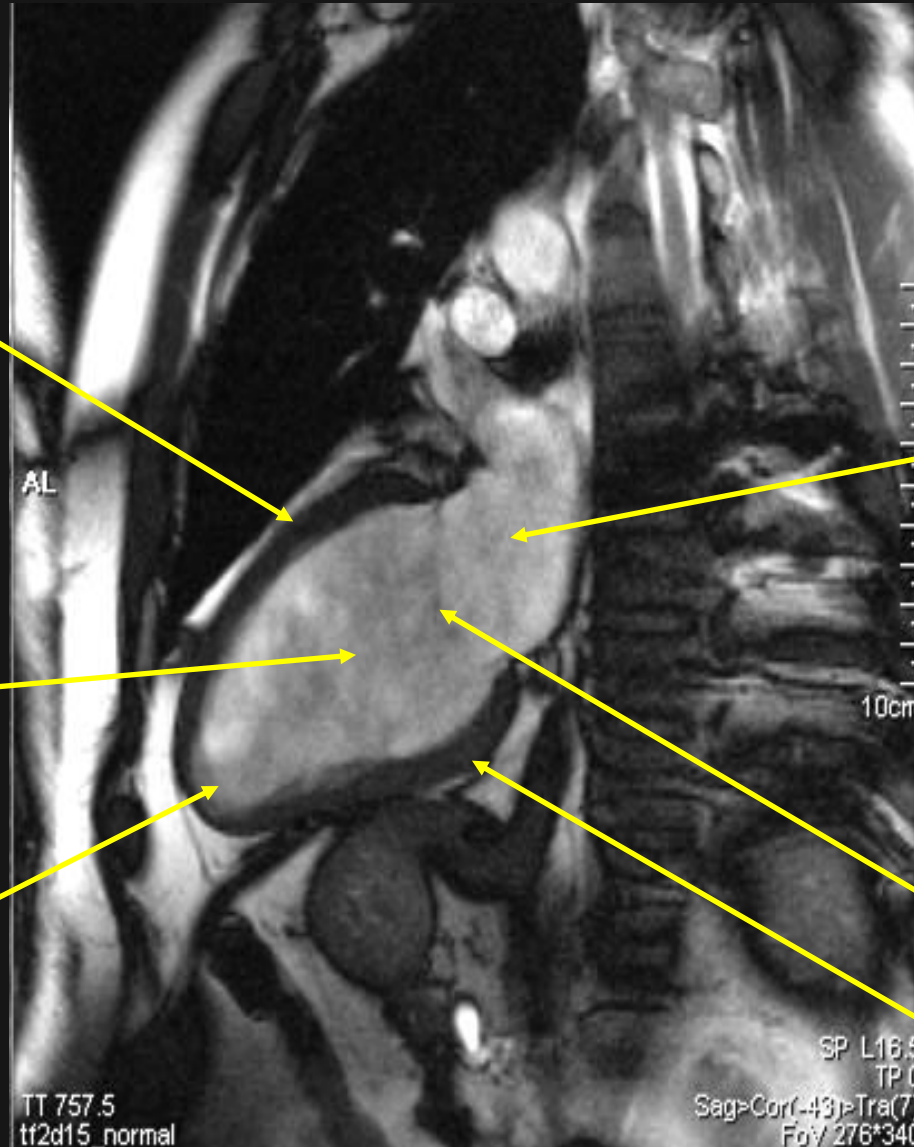
# MR srdce: výtoková část levé komory

## MRI of the heart: pars/tractus effluxionalis ventriculi sinistri (aortic outflow tract)



# MR srdce: 2komorová projekce – dlouhá osa

## MRI of the heart: 2-chamber vertical long axis



ventriculus sinister  
(paries anterior)

atrium sin.

ventriculus sinister  
(cavitas)

valva bicuspidalis/mitralis

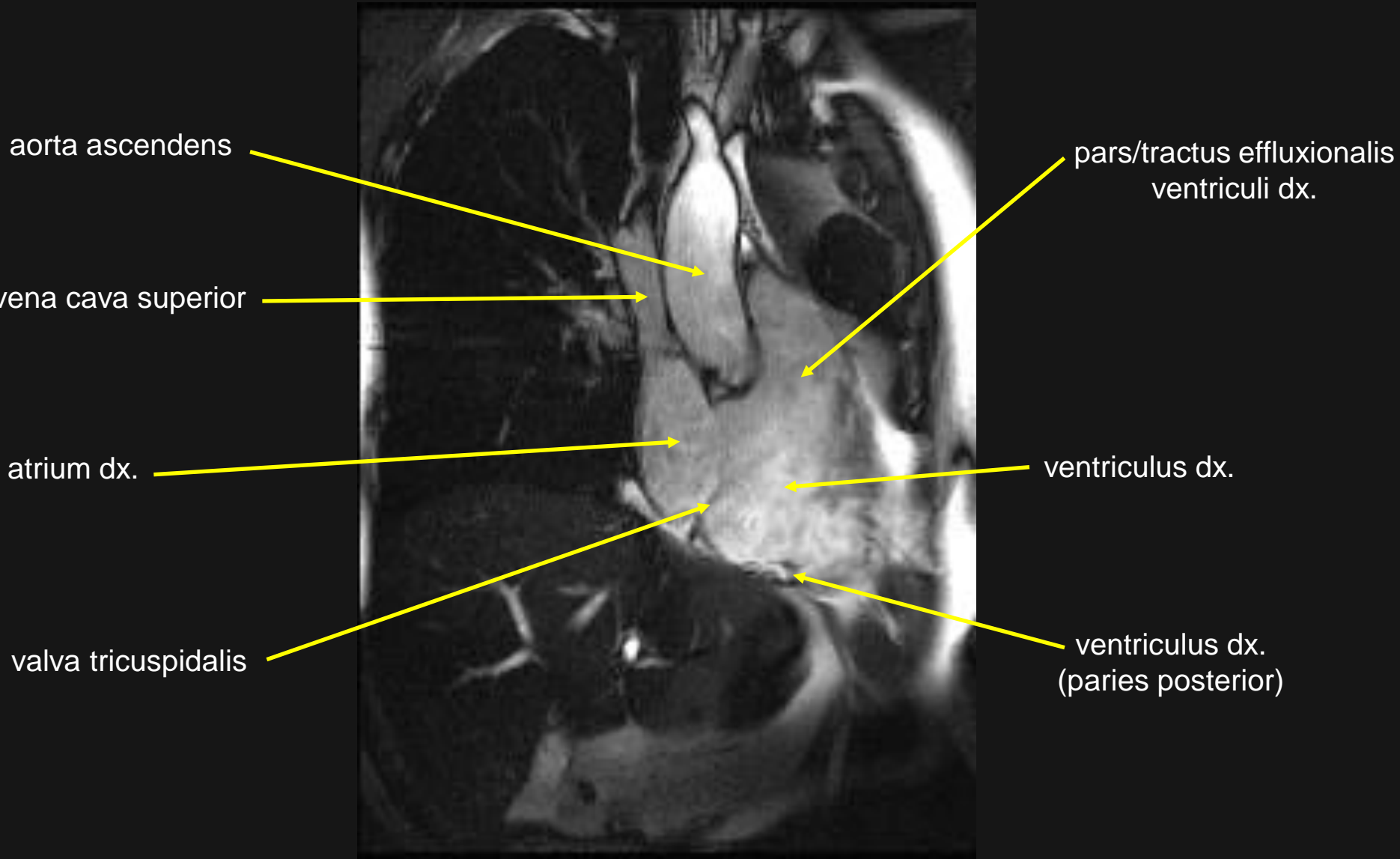
apex cordis

ventriculus sinister  
(paries posterior)



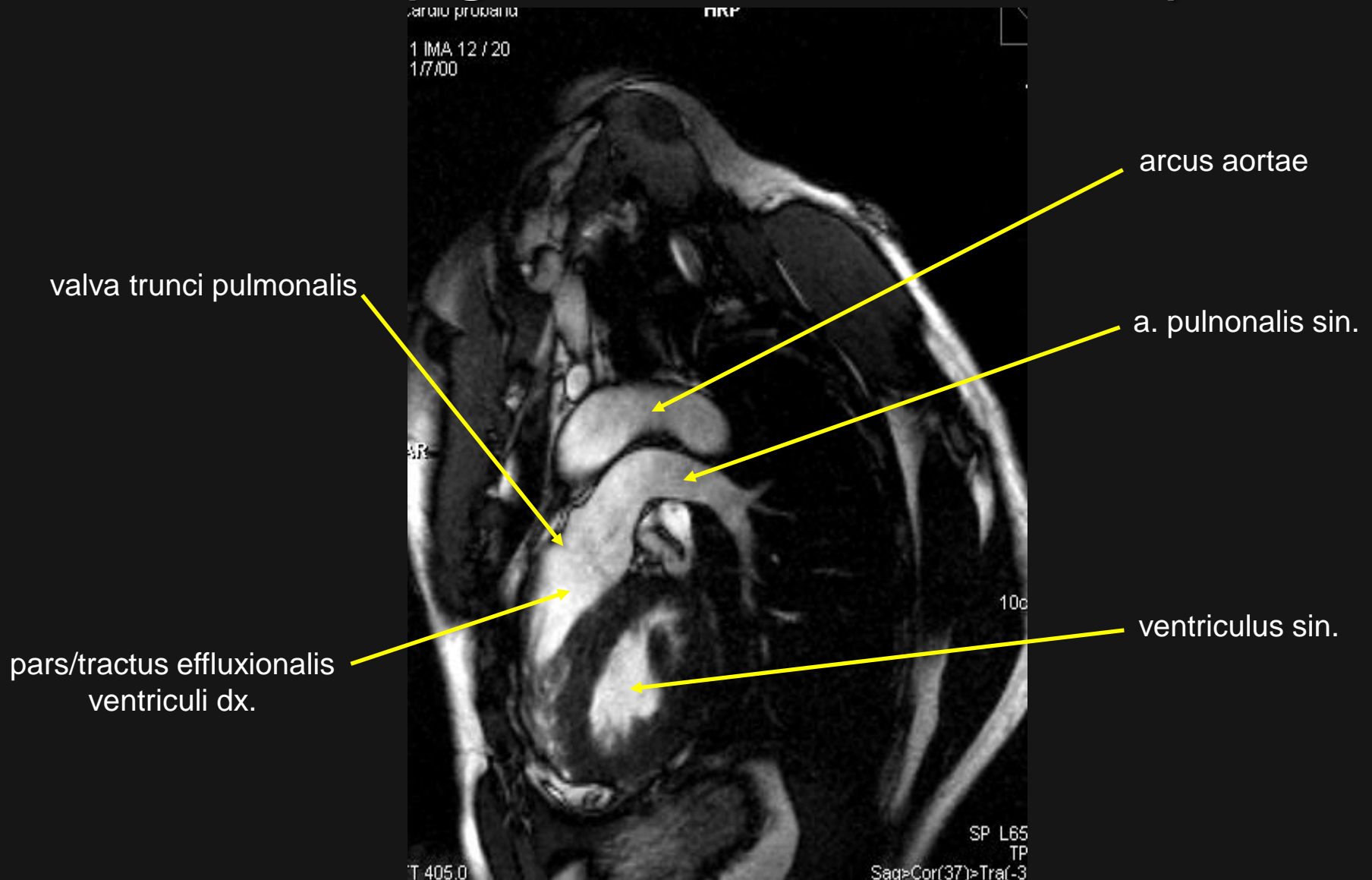
# MR srdce: vtoková část pravé komory

## MRI of the heart: pars/tractus inffluxionalis ventriculi dextri (right ventricular inflow tract)



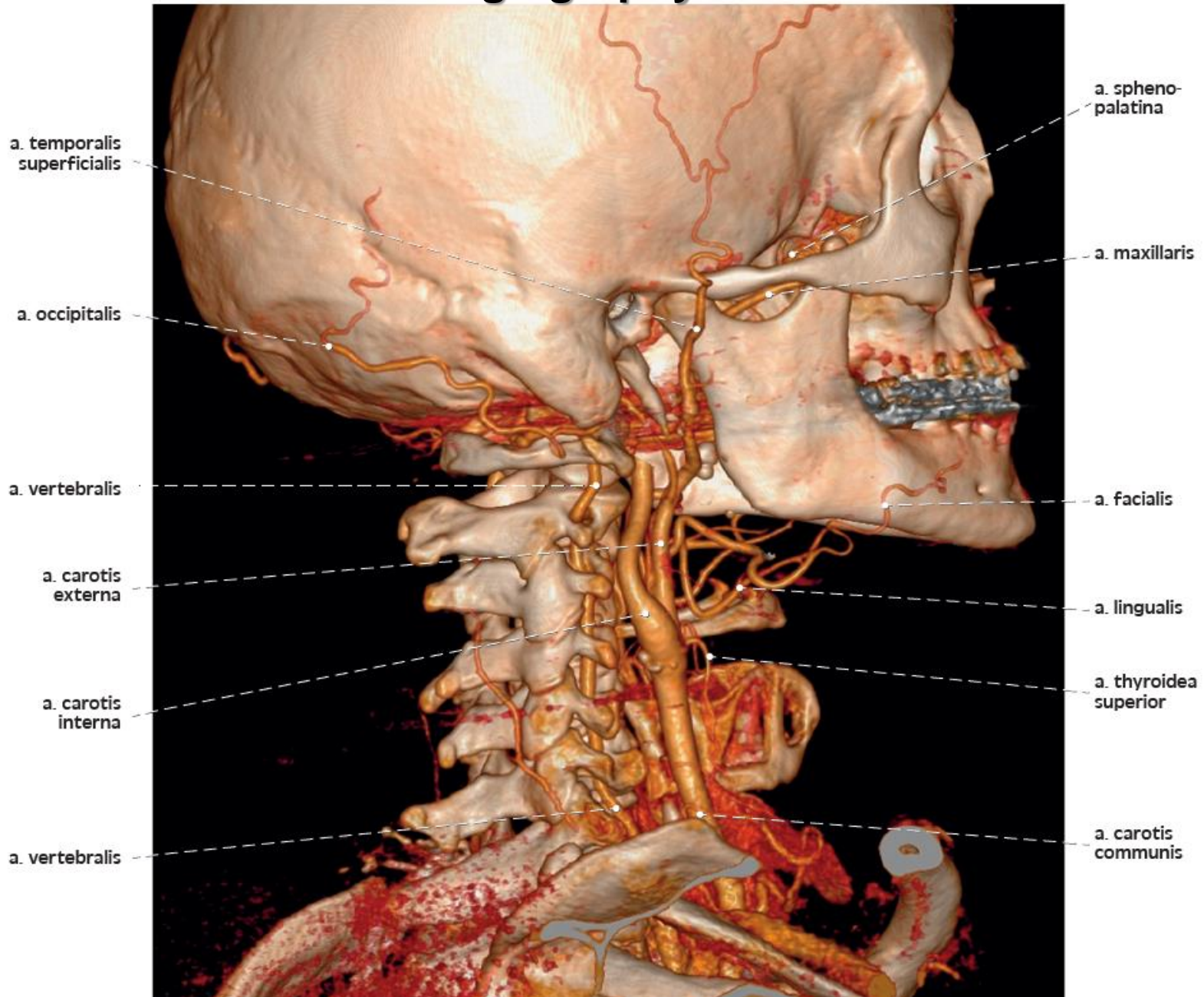
# MR srdce: vtoková část pravé komory

## MRI of the heart: pars/tractus inffluxionalis ventriculi dextri (right ventricular inflow tract)



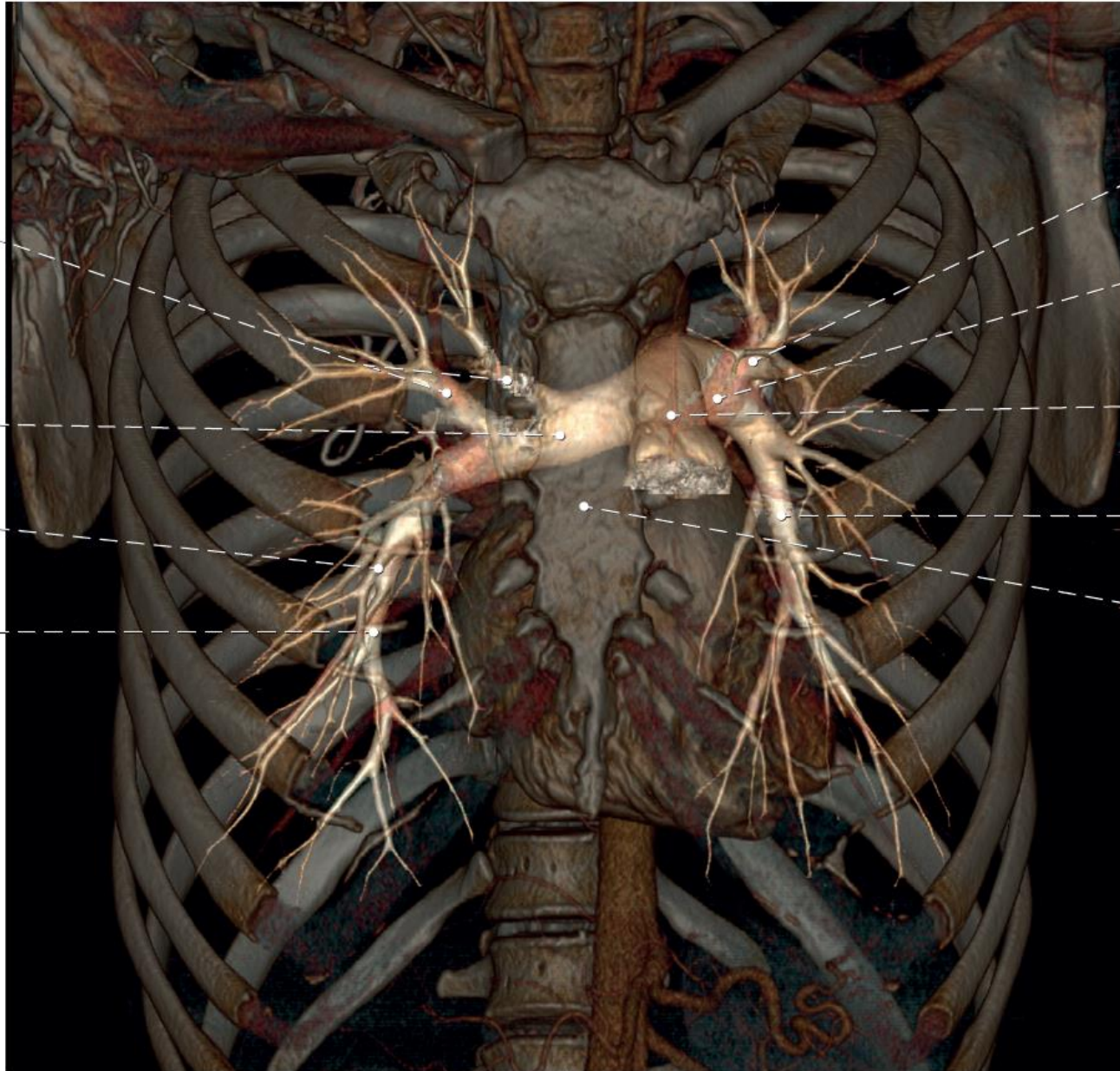
# 3D rekonstrukce CT angiografie tepen krku a hlavy

## 3D reconstruction of CT angiography of the head and neck arteries



# 3D rekonstrukce CT angiografie plícnice

## 3D reconstruction of CT angiography of the truncus pulmonalis



aa. lobares superiores dx.

aa. lobares superiores sin.

a. pulmonalis sin.

truncus pulmonalis

a. lobares inferiores sin.

corpus sterni

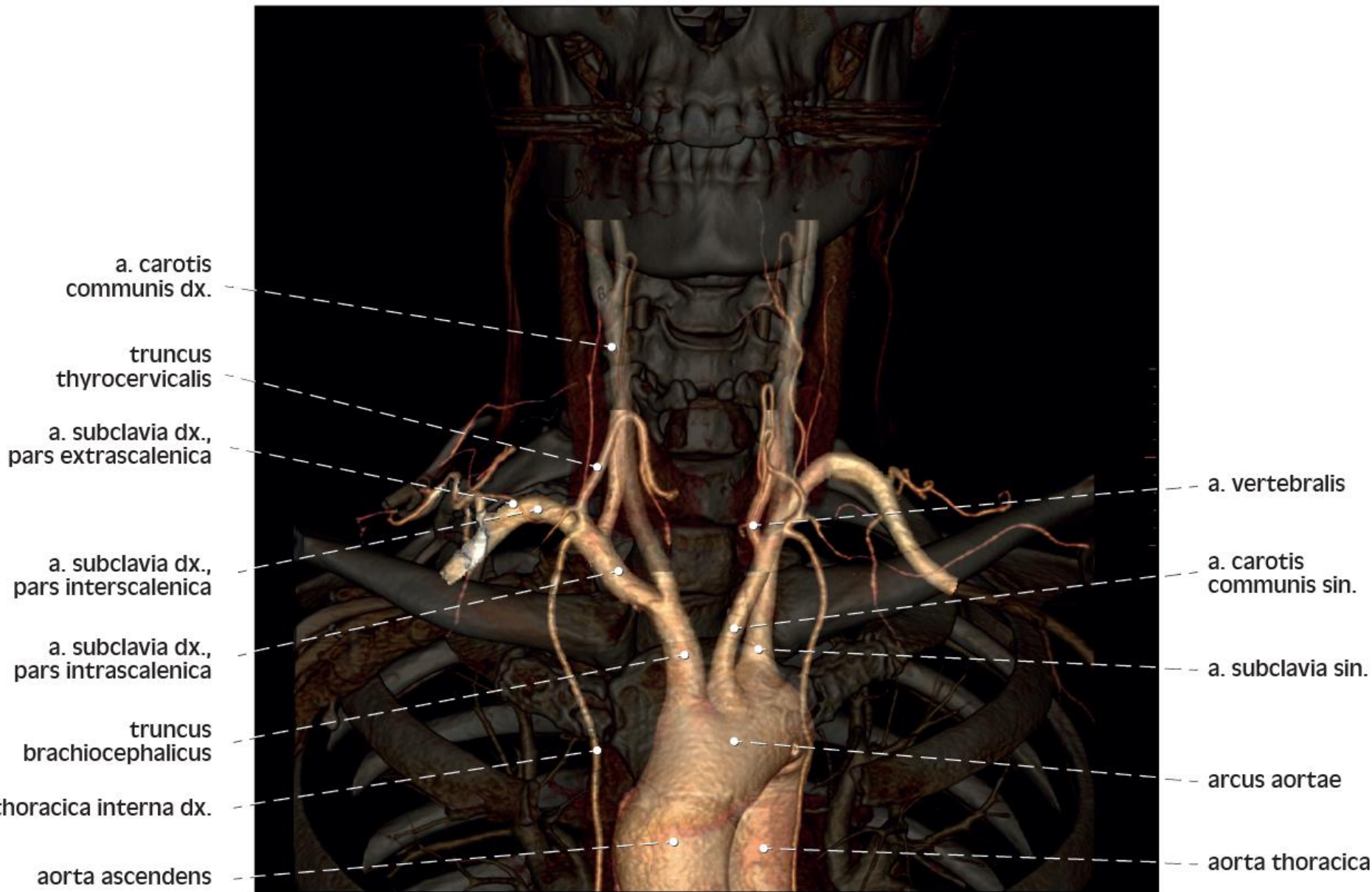
a. pulmonalis dx.

a. lobaris media

a. lobares inferiores dx.

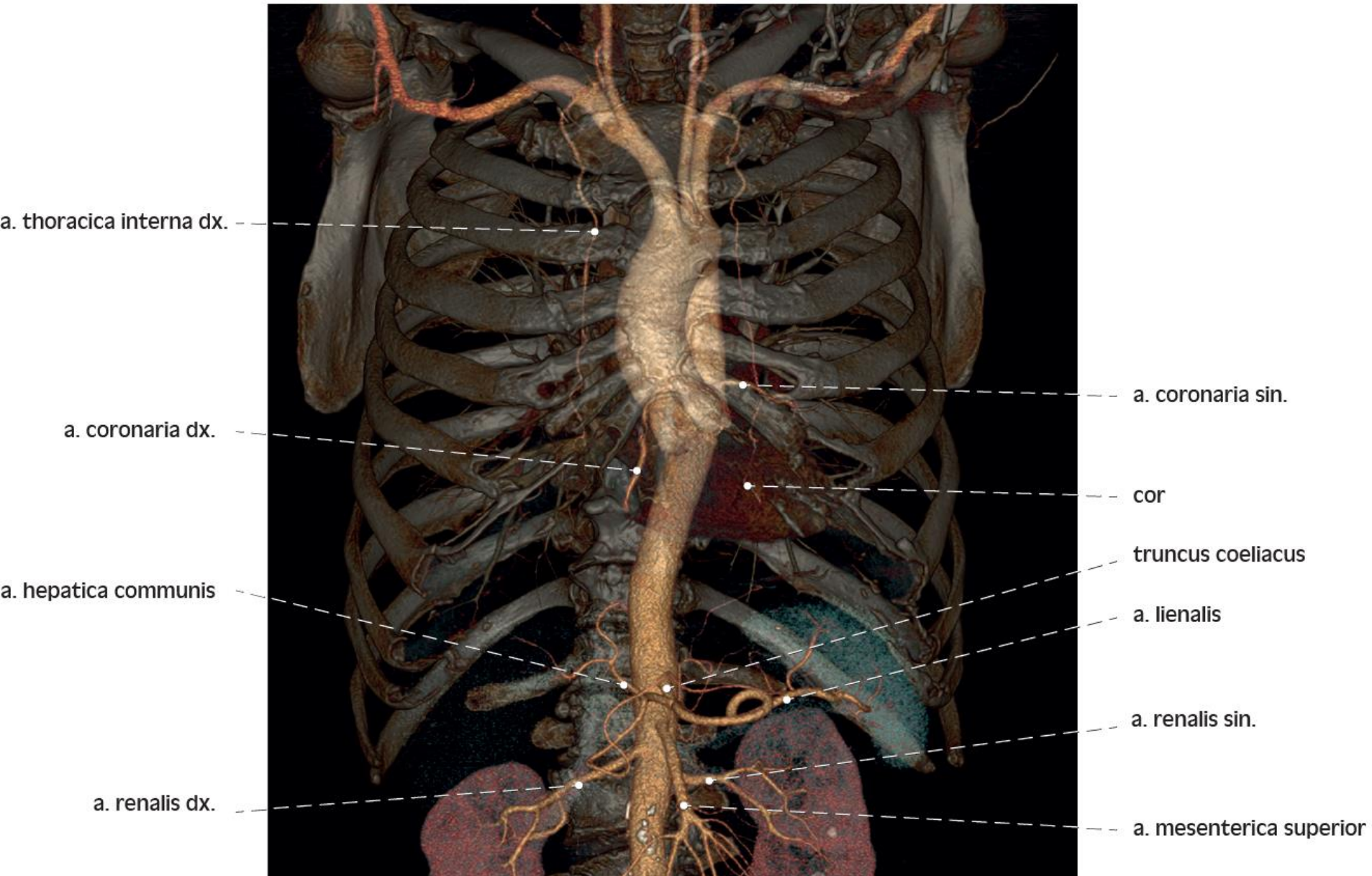
# 3D rekonstrukce CT angiografie srdečníce

## 3D reconstruction of CT angiography of the aorta



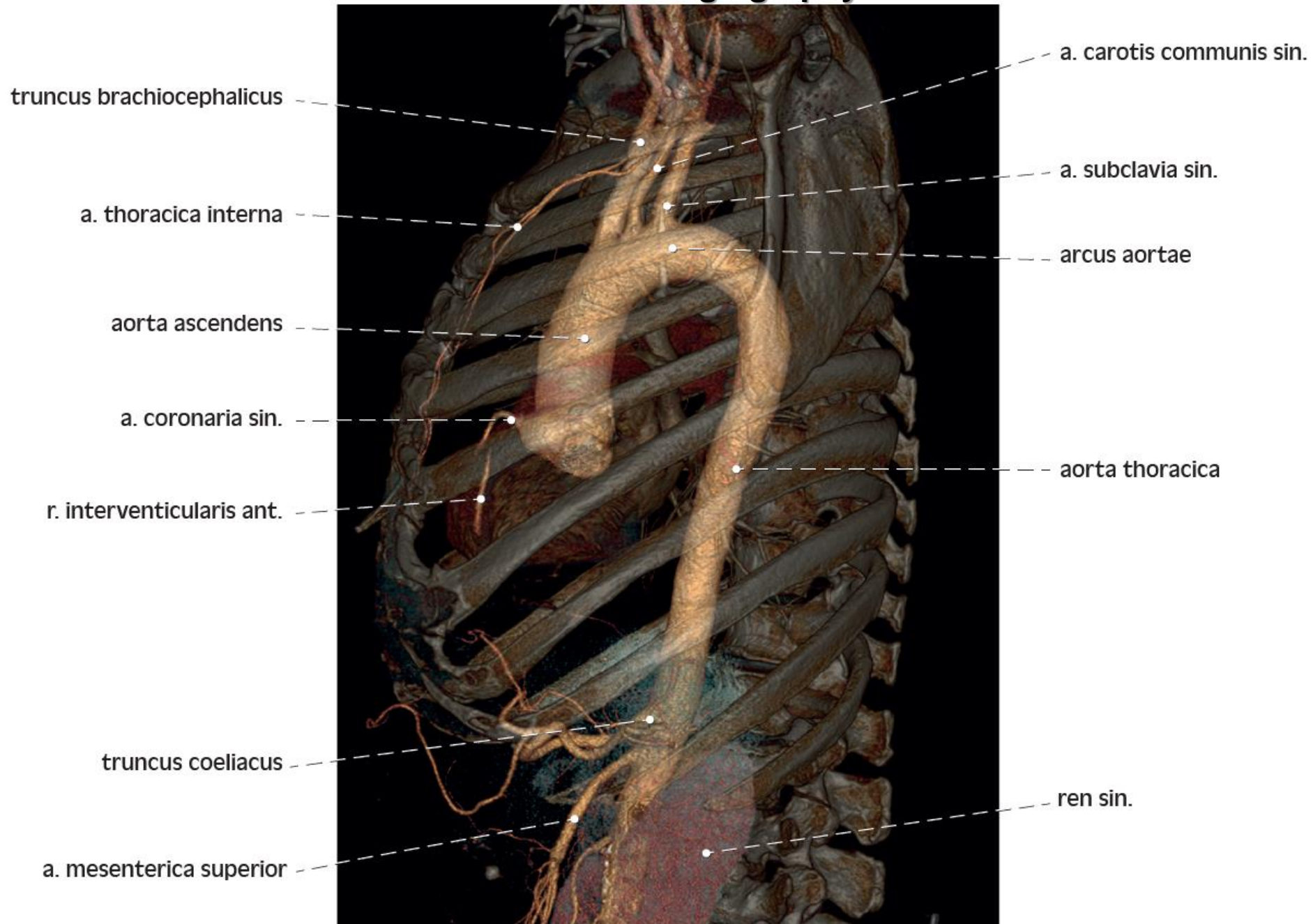
# 3D rekonstrukce CT angiografie srdečníce

## 3D reconstruction of CT angiography of the aorta



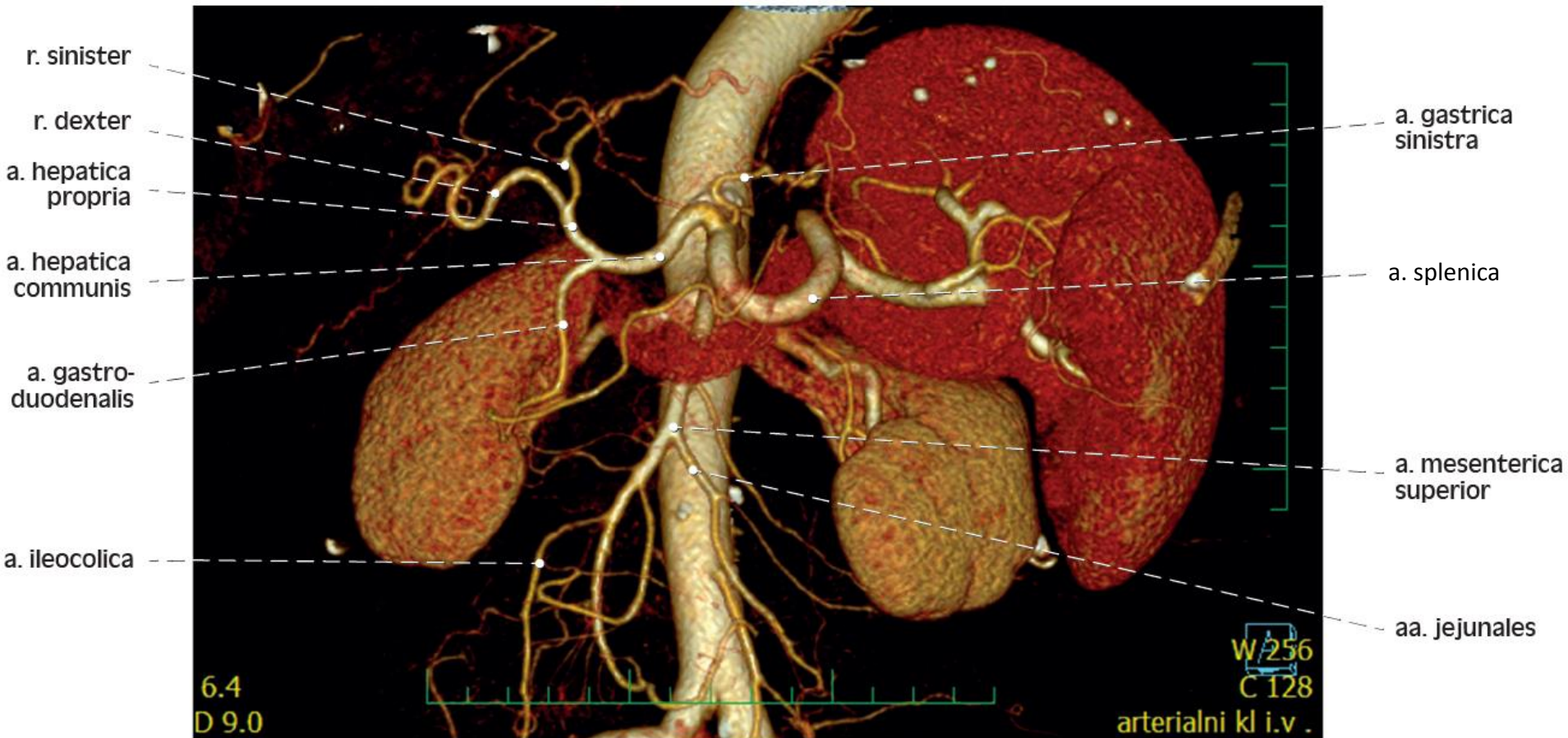
# 3D rekonstrukce CT angiografie srdečníce

## 3D reconstruction of CT angiography of the aorta



# 3D rekonstrukce CT angiografie břišní srdečnice

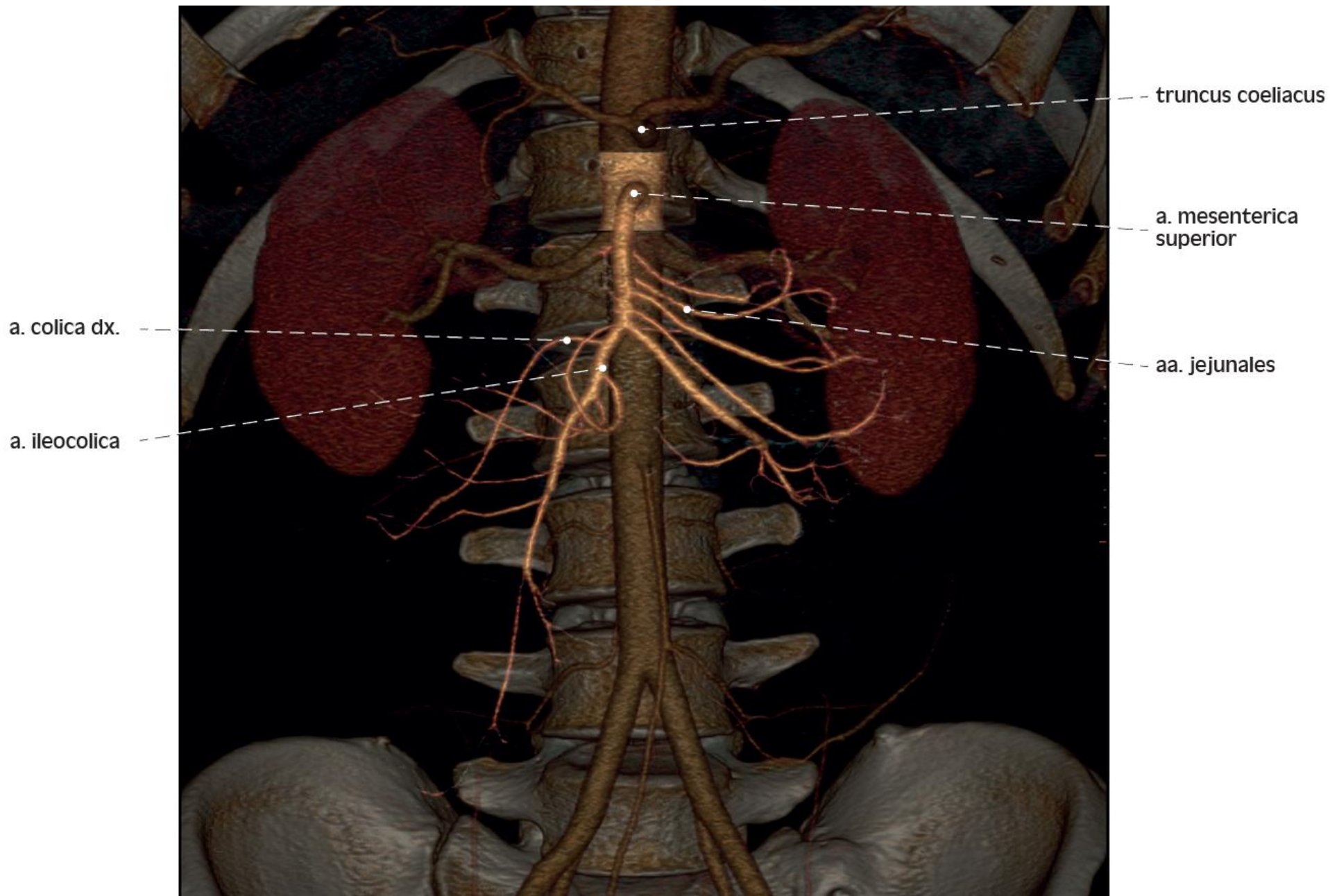
## 3D reconstruction of CT angiography of the aorta abdominalalis





# 3D rekonstrukce CT angiografie břišní srdečnice

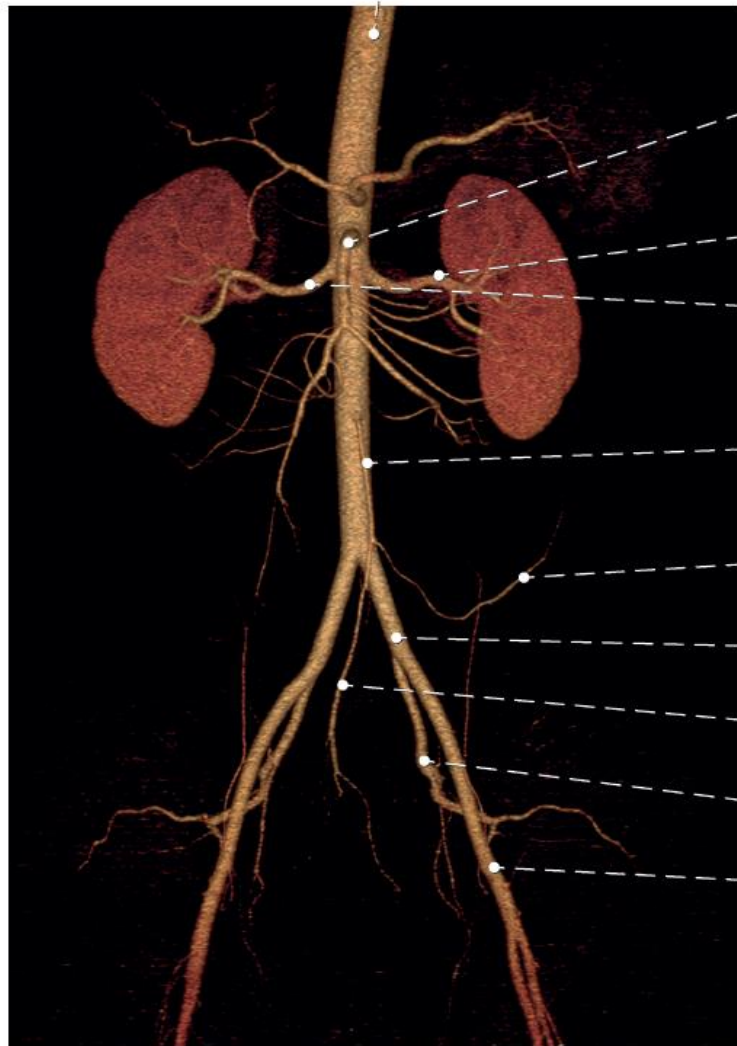
## 3D reconstruction of CT angiography of the aorta abdominalis



# 3D rekonstrukce CT angiografie břišní srdečnice

## 3D reconstruction of CT angiography of the aorta abdominalis

truncus coeliacus



a. mesenterica superior

a. renalis sin.

a. renalis dx.

a. mesenterica inferior

a. colica sin.

a. iliaca communis

a. rectalis superior

a. iliaca interna

a. iliaca externa

a. splenica



truncus coeliacus

a. mesenterica superior

a. mesenterica inferior

a. iliaca interna

a. epigastrica inferior

a. iliaca externa

# 3D rekonstrukce CT angiografie pánevních tepen

## 3D reconstruction of CT angiography of the arteriae iliacaе

