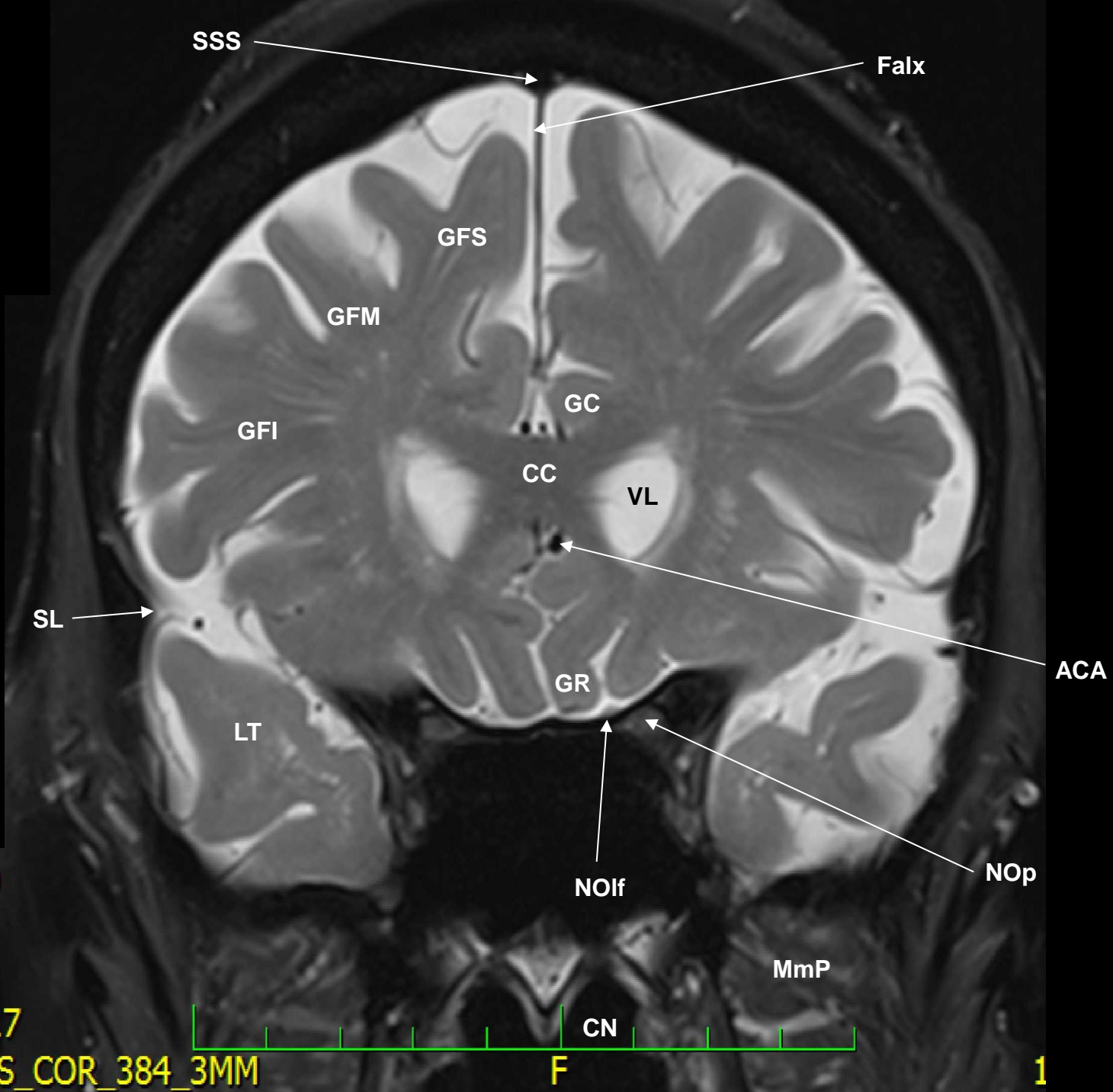


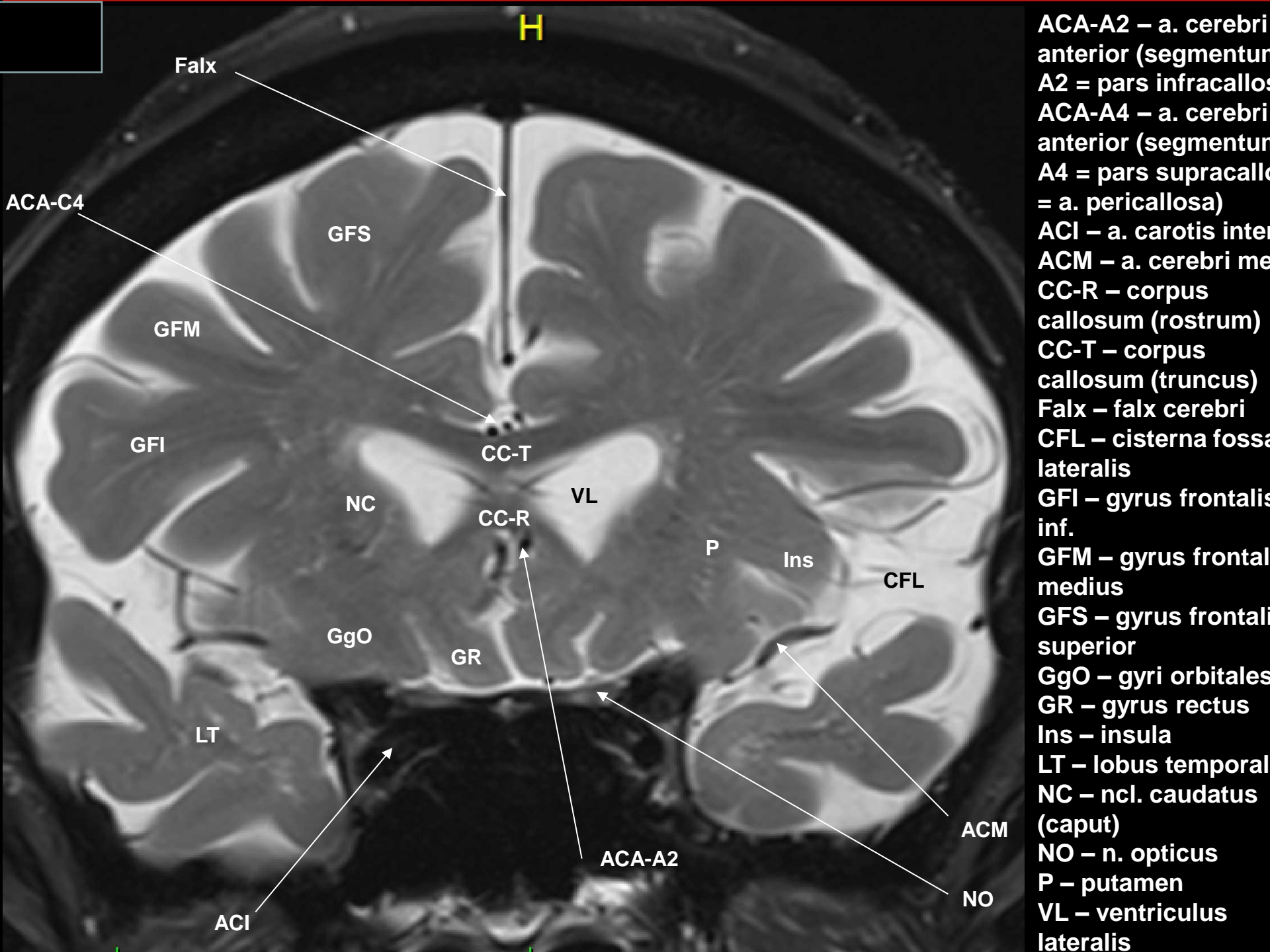
Mozek

Brain

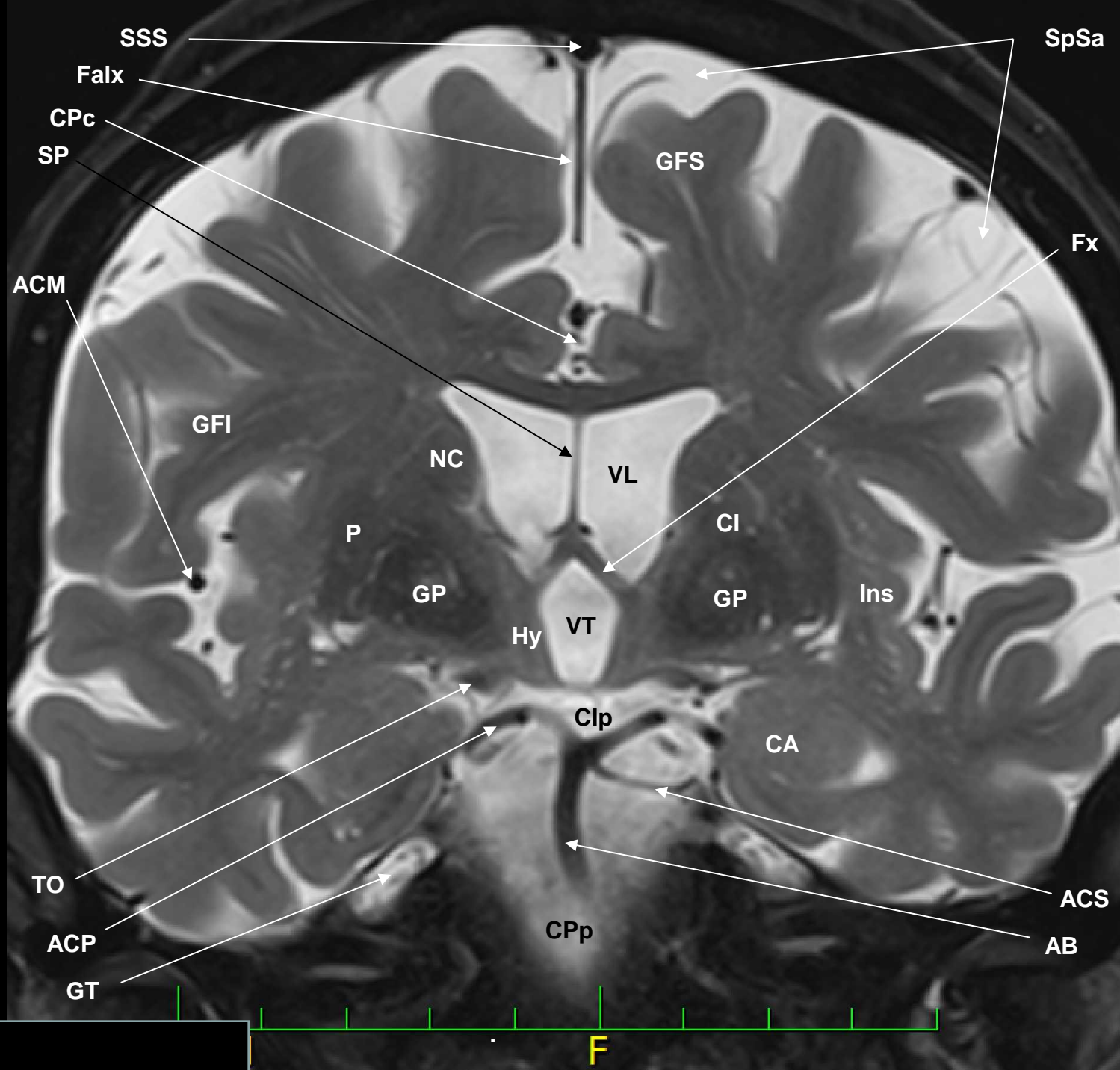
Verze 1.2

ACA – a. cerebri anterior (A2)
CC – corpus callosum (genu)
CN – cavitas nasi
Falx – falx cerebri
GC – gyrus cinguli
GFI – gyrus frontalis inferior
GFM – gyrus frontalis medius
GFS – gyrus frontalis superior
GR – gyrus rectus
LT – lobus temporalis
MmP – mm. pterygoidei
NOlf – n. olfactorius
NOp – n. opticus
SL – sulcus lateralis
SSS – sinus sagittalis superior
VL – ventriculus lateralis (cornu frontale)





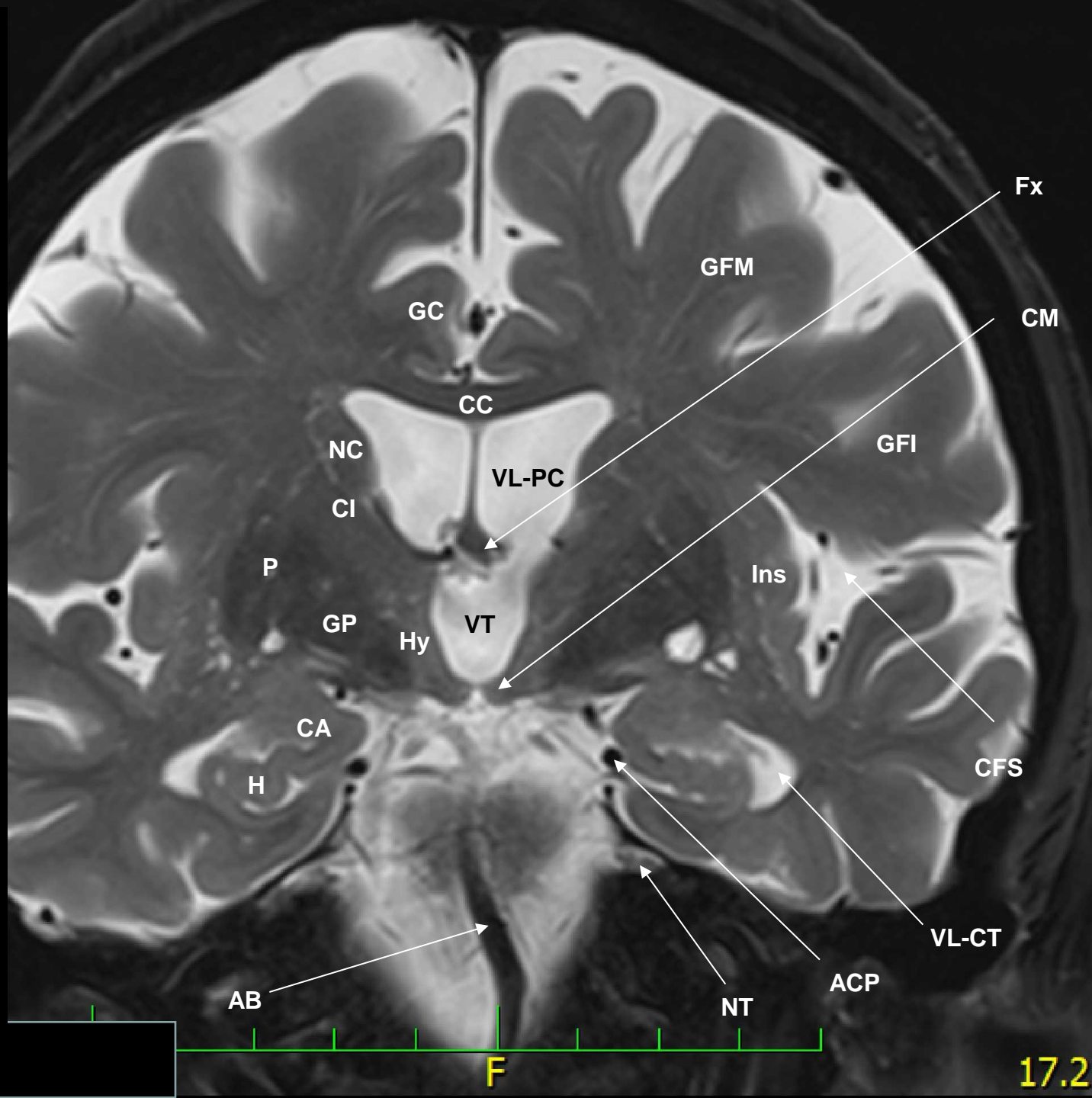
ACA-A2 – a. cerebri anterior (segmentum A2 = pars infracallosa)
 ACA-A4 – a. cerebri anterior (segmentum A4 = pars supracallosa = a. pericallosa)
 ACI – a. carotis interna
 ACM – a. cerebri media
 CC-R – corpus callosum (rostrum)
 CC-T – corpus callosum (truncus)
 Falx – falx cerebri
 CFL – cisterna fossae lateralis
 GFI – gyrus frontalis inf.
 GFM – gyrus frontalis medius
 GFS – gyrus frontalis superior
 GgO – gyri orbitales
 GR – gyrus rectus
 Ins – insula
 LT – lobus temporalis
 NC – ncl. caudatus (caput)
 NO – n. opticus
 P – putamen
 VL – ventriculus lateralis



- SpSa
- AB – a. basilaris
- ACM – a. cerebri media (M3)
- ACP – a. cerebri posterior (P2)
- ACS – a. cerebelli superior
- Ins – insula
- CA – corpus amygdaloideum
- CI – capsula interna
- Cip – cisterna interpeduncularis
- CPc – cisterna pericallosa
- CPp – cisterna prepontina
- Falx – falx cerebri
- Fx – fornix (columna)
- GFS – gyrus frontalis superior
- GP – globus pallidus
- GT – ganglion trigeminale
- Hy – hypothalamus
- NC – ncl. caudatus (corpus)
- P – putamen
- SpSa – spatium subaracnoideum
- SSS – sinus sagittalis superior
- TO – tractus opticus
- VL – ventriculus lateralis (pars centralis)
- VT – ventriculus tertius

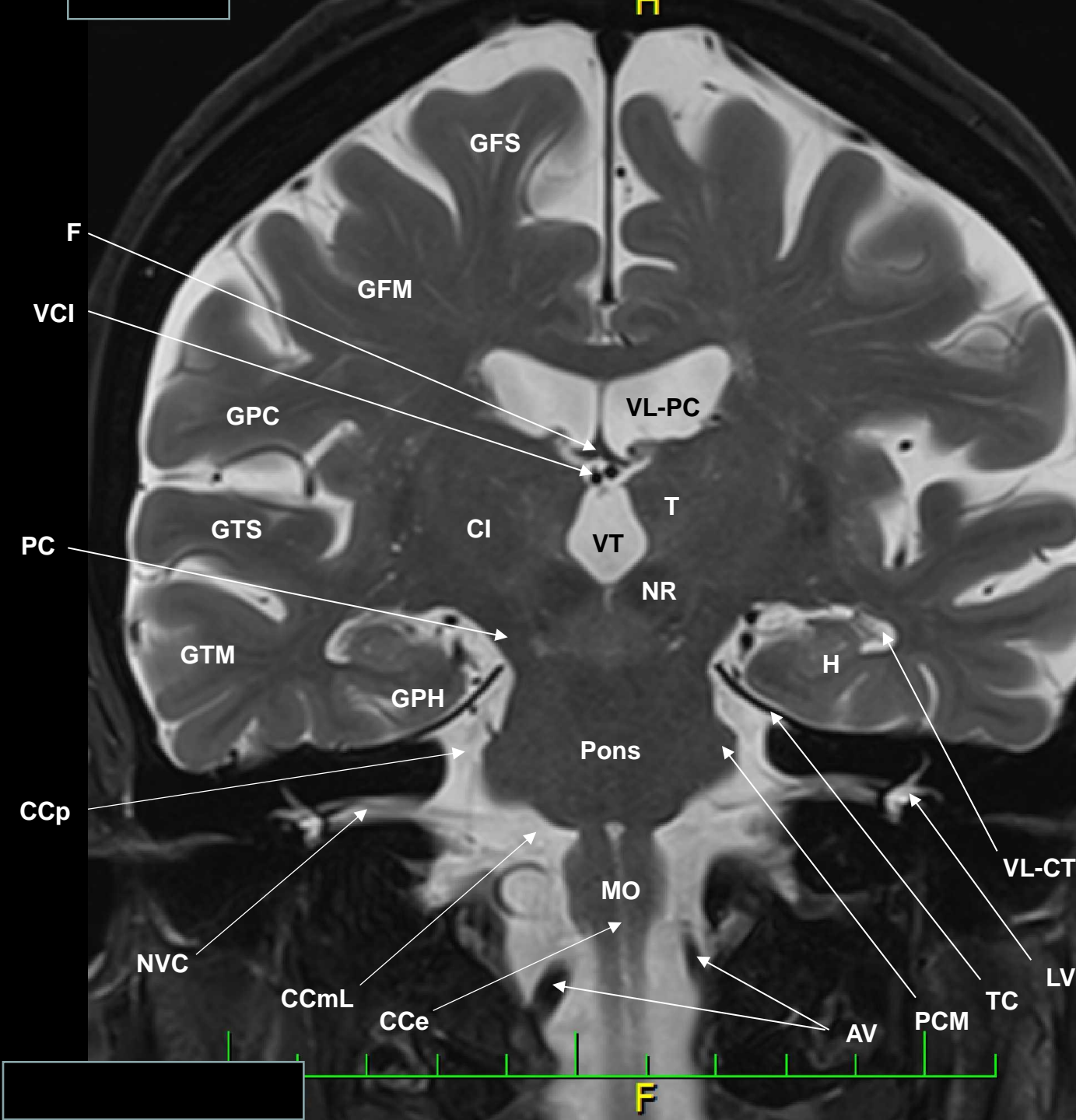
F

AB – a. basilaris
ACP – a. cerebri posterior
(P2)
CA – corpus
 amygdaloideum
CC – corpus callosum
CI – capsula int.
CFS – cisterna fossae
 lateralis
CM – corpora mammillaria
Fx – fornix (corpus)
GC – gyrus cinguli
GFM – gyrus frontalis
 medius
GFI – gyrus frontalis
 inferior
GP – globus pallidus
H – hippocampus
Hy – hypothalamus
Ins – insula
NC – ncl. caudatus
 (corpus)
NT – nervus trigeminus
P – putamen
VL-PC – ventriculus
 lateralis (pars centralis)
VL-CT – ventriculus
 lateralis (cornu
 temporale)
VT – ventriculus tertius



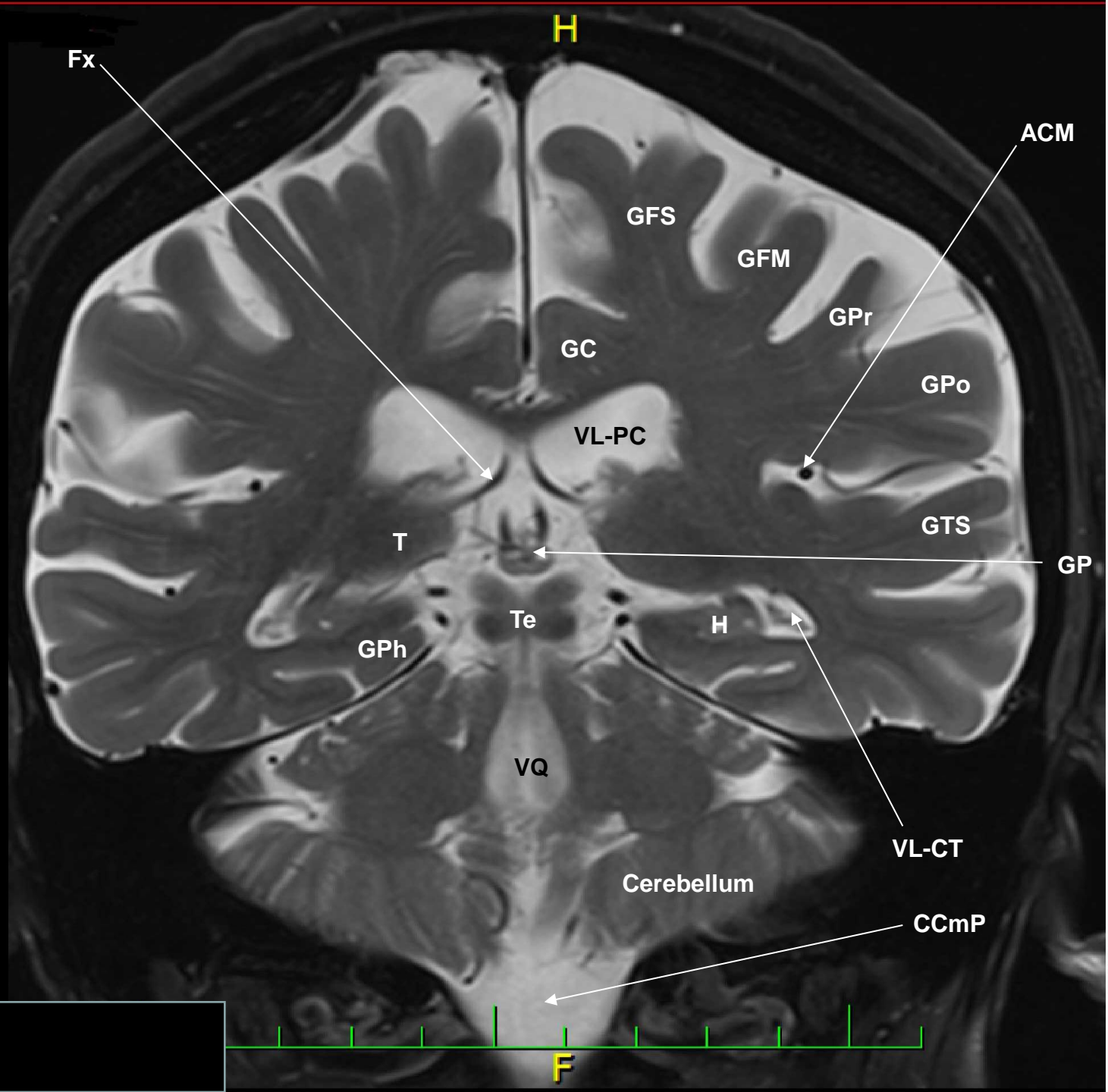


Falx – falx cerebri
 Fip – fossa interpeduncularis
 CI – capsula interna
 CPp – cisterna preoptina
 Fx – fornix (corpus)
 GP – globus pallidus
 GPh – gyrus parahippocampalis
 H – hippocampus
 NC – ncl. caudatus
 NR – ncl. ruber
 NT – n. trigeminus
 P – putamen
 SP – septum pellucidum
 T – thalamus
 VCI – v. cerebra interna
 VvCS – vv. cerebri superiores
 VL-PC – ventriculus lateralis (pars centralis)
 VL-CT – ventriculus lateralis (cornu temporale)
 VT – ventriculus tertius

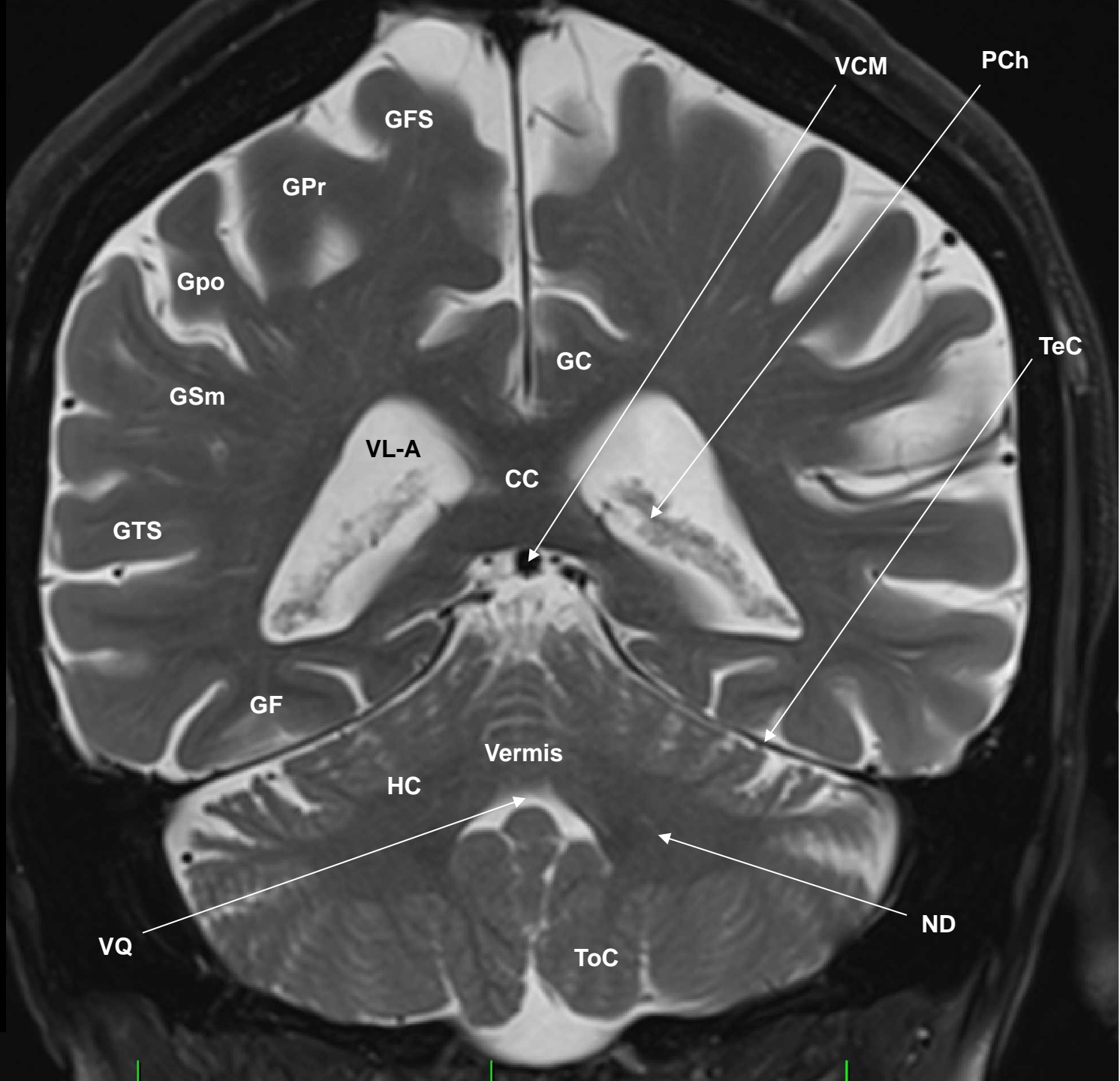


- AV – a. vertebralis (V4)
- Cce – canalis centralis
- CCmL – cisterna cerebellomedullaris lateralis
- CCp – cisterna cerebellopontina
- F – fornix (corpus)
- GPh – gyrus parahippocampalis
- GFM – gyrus frontalis medius
- GFS – gyrus frontalis superior
- GPC – gyrus postcentralis
- GTM – gyrus temporalis medius
- GTS – gyrus temporalis superior
- H – hippocampus
- LV – labyrinthus vestibularis
- MO – medulla oblongata
- NVC – nervus vestibulocochlearis
- PC – pedunculus cerebri
- PCM – pedunculus cerebellaris medius
- T – thalamus
- TC – tentorium cerebelli
- VCI – v. cerebri interna
- VL-PC – ventriculus lateralis (pars centralis)
- VL-CT – ventriculus lateralis (cornu temporale)
- VT – ventriculus tertius

ACM – a. cerebri media
CCmP – cisterna cerebellomedullaris posterior
Fx – fornix (crus)
GC – gyrus cinguli
GFS – gyrus frontalis superior
GFM – gyrus frontalis medius
GP – glandula pinealis
GPO – gyrus postcentralis
GPr – gyrus precentralis
GTS – gyrus temporalis superior
H – hippocampus
VL-PC – ventriculus lateralis (pars centralis)
VL-CT – ventriculus lateralis (cornu temporale)
VQ – ventriculus quartus
GPh – gyrus parahippocampalis
T – thalamus
Te – tectum



CC – corpus callosum (splenium)
Fx – fornix (crus)
GC – gyrus cinguli
GF – gyrus fusiformis
GFS – gyrus frontalis superior
GPo – gyrus postcentralis
GPr – gyrus precentralis
GSm – gyrus supramarginalis
GTS – gyrus temporalis superior
H – hippocampus
ND – ncl. dentatus
HC – hemispherium cerebelli
PCh – plexus choroideus
TeC – tentorium cerebelli
To – tonislla cerebelli
VCM – v. cerebri magna
VL-A – ventriculus lateralis (atrium)





GPr

GFS

GC

VL-A

CC

GF

Vermis

- CQ – cisterna quadrigeminalis
- GC – gyrus cinguli
- GF – gyrus fusiformis
- GFS – gyrus forntalis superior
- GPr – gyrus precentralis
- CC – corpus callosum (splenium)
- PCh – plexus choroideus
- VL-A – ventriculus lateralis (atrium)

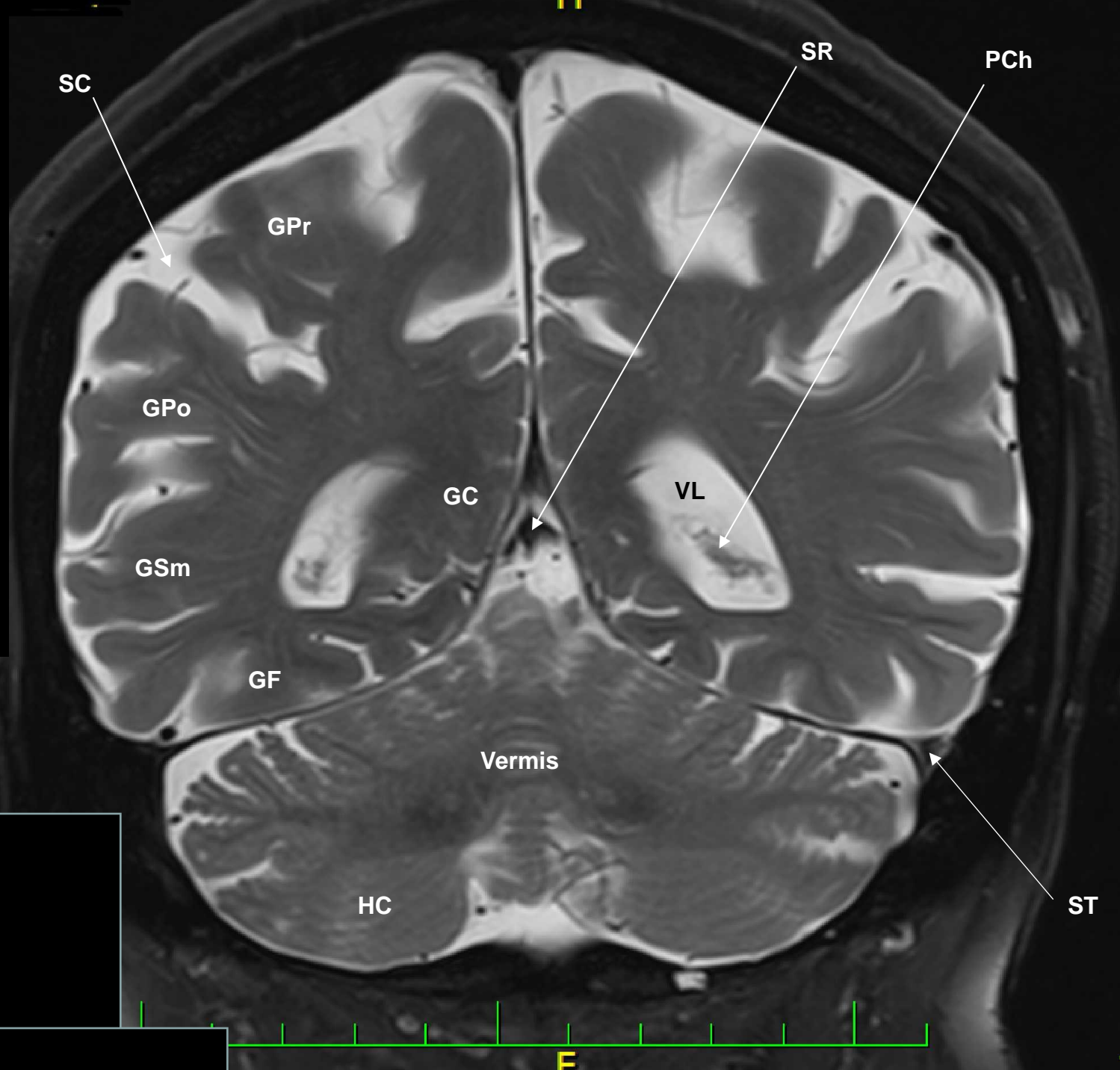
PCh

CQ

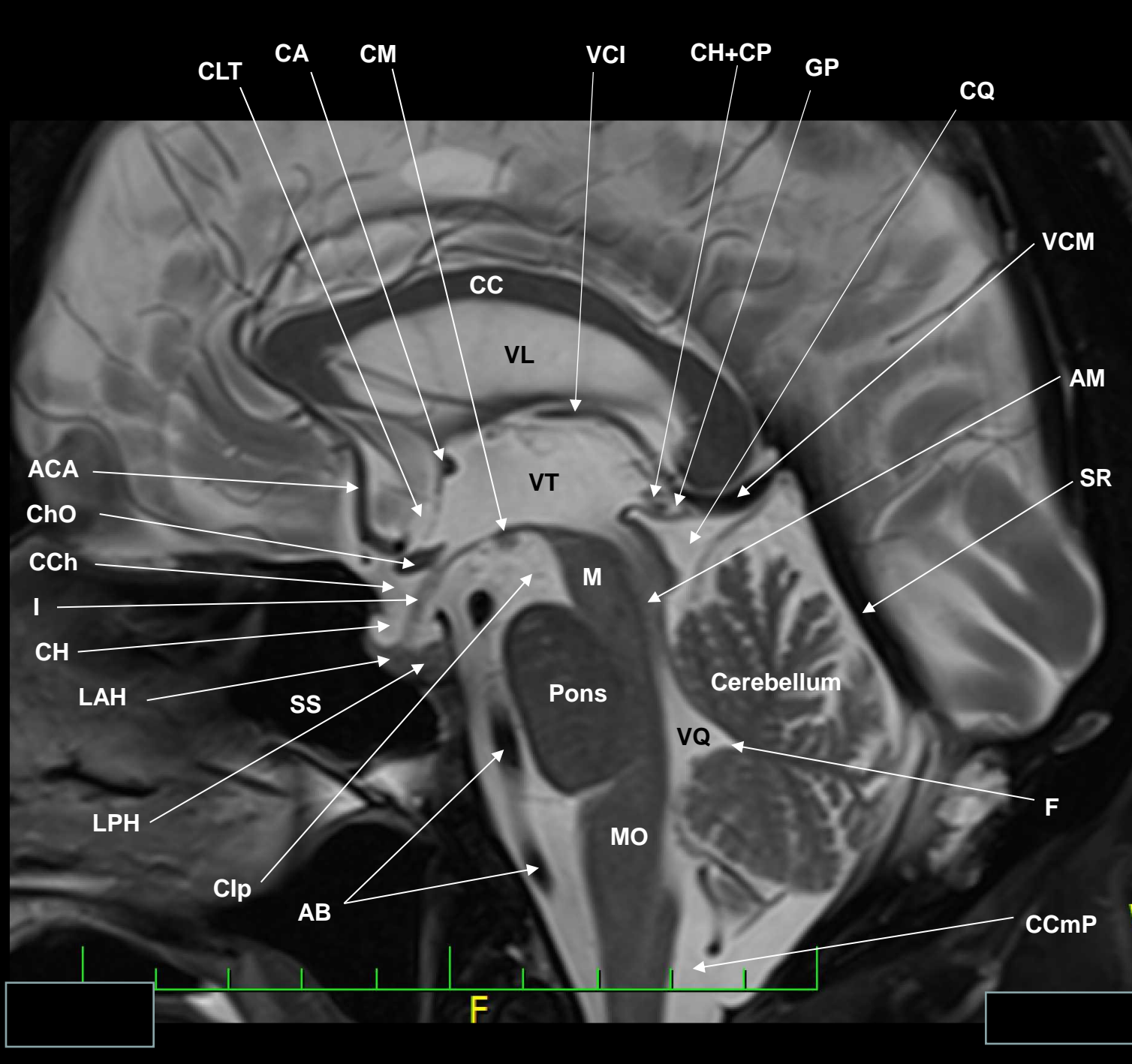
L



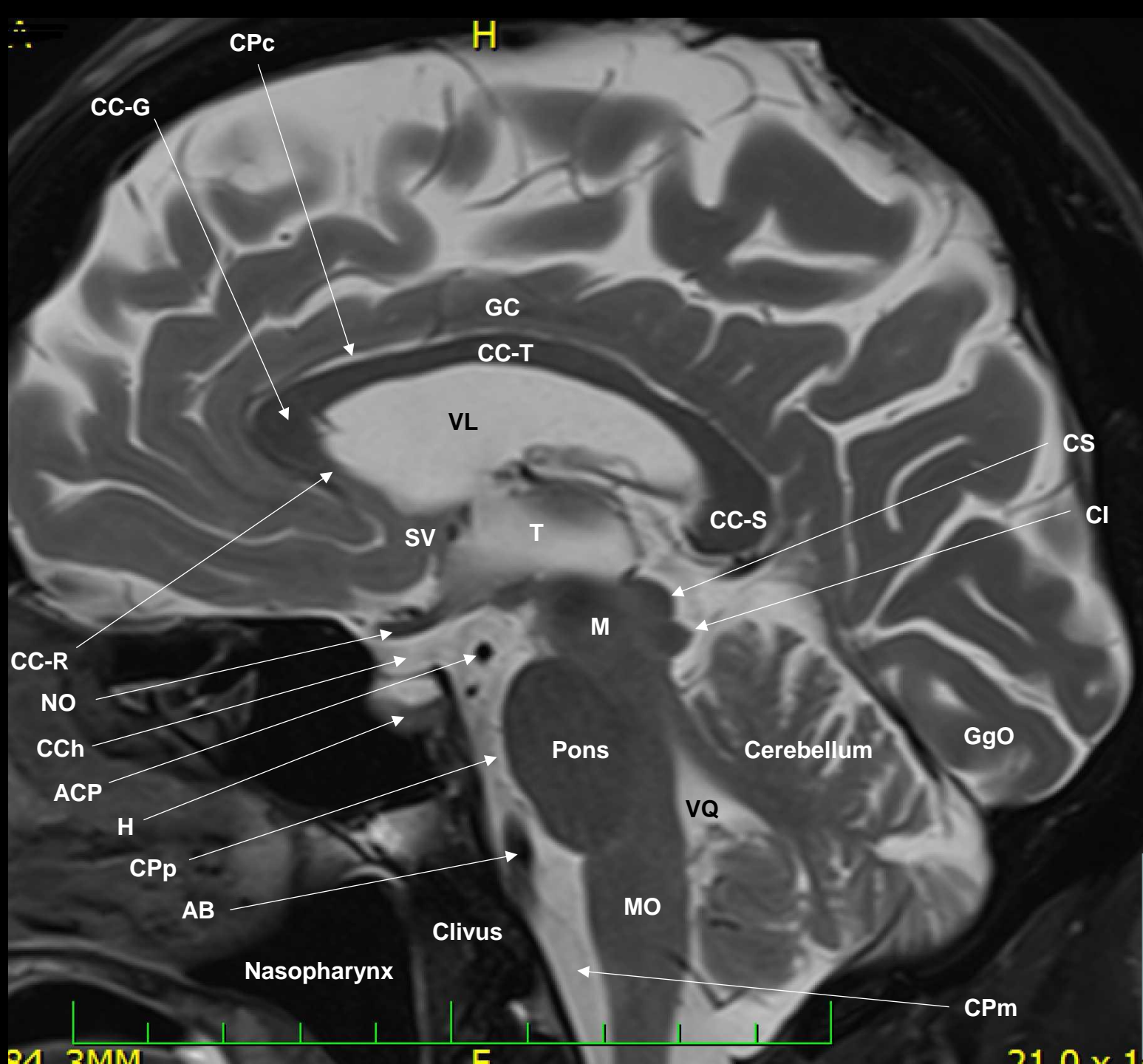
GC – gyrus cinguli
GF – gyrus fusiformis
GPo – gyrus postcentralis
GPr – gyrus precentralis
GSm – gyrus supramarginalis
HC – hemispherium cerebelli
PCh – plexus choroideus
SC – sulcus centralis
SR – sinus rectus
ST – sinus transversus
VL – ventriculus lateralis (bulbus)

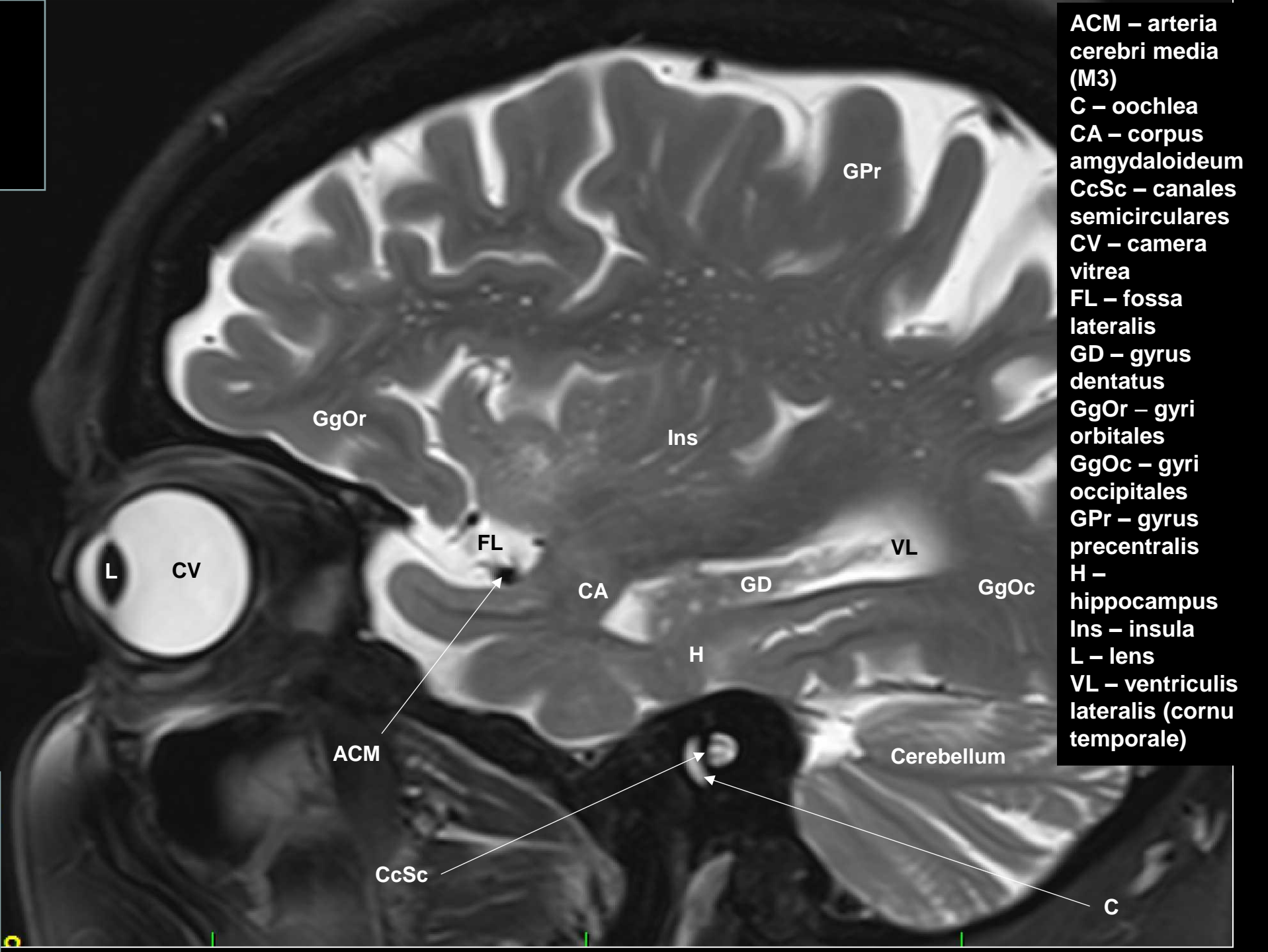


- AB – a. basilaris
- ACA – a. cerebri ant. (A2)
- AM – aqueductus mesencephali
- CA – commissura anterior
- CC – corpus callosum
- CCmP – cisterna cerebellomedullaris posterior
- CH – cisterna hypophysialis
- CH+CP – commissura habenularum et posterior
- CCh – cisterna chiasmatica
- Cip – cisterna interpeduncularis
- CLT – cisterna laminae terminalis
- ChO – chiasma opticum
- CM – corpus mammillare
- CQ – cisterna quadrigeminalis
- F – fastigium
- GP – glandula pinealis
- ChO – chiasma opticum
- I – infundibulum
- LAH – lobus anterior hypophysis
- LPH – lobus posterior hypophysis
- M – mesencephalon
- MO – medulla oblongata
- SR – sinus rectus
- SS – sinus sphenoidalis
- VCI – vena cerebri interna
- VCM – vena cerebri magna
- VL – ventriculus lateralis
- VQ – ventriculus quartus
- VT – ventriculus tertius



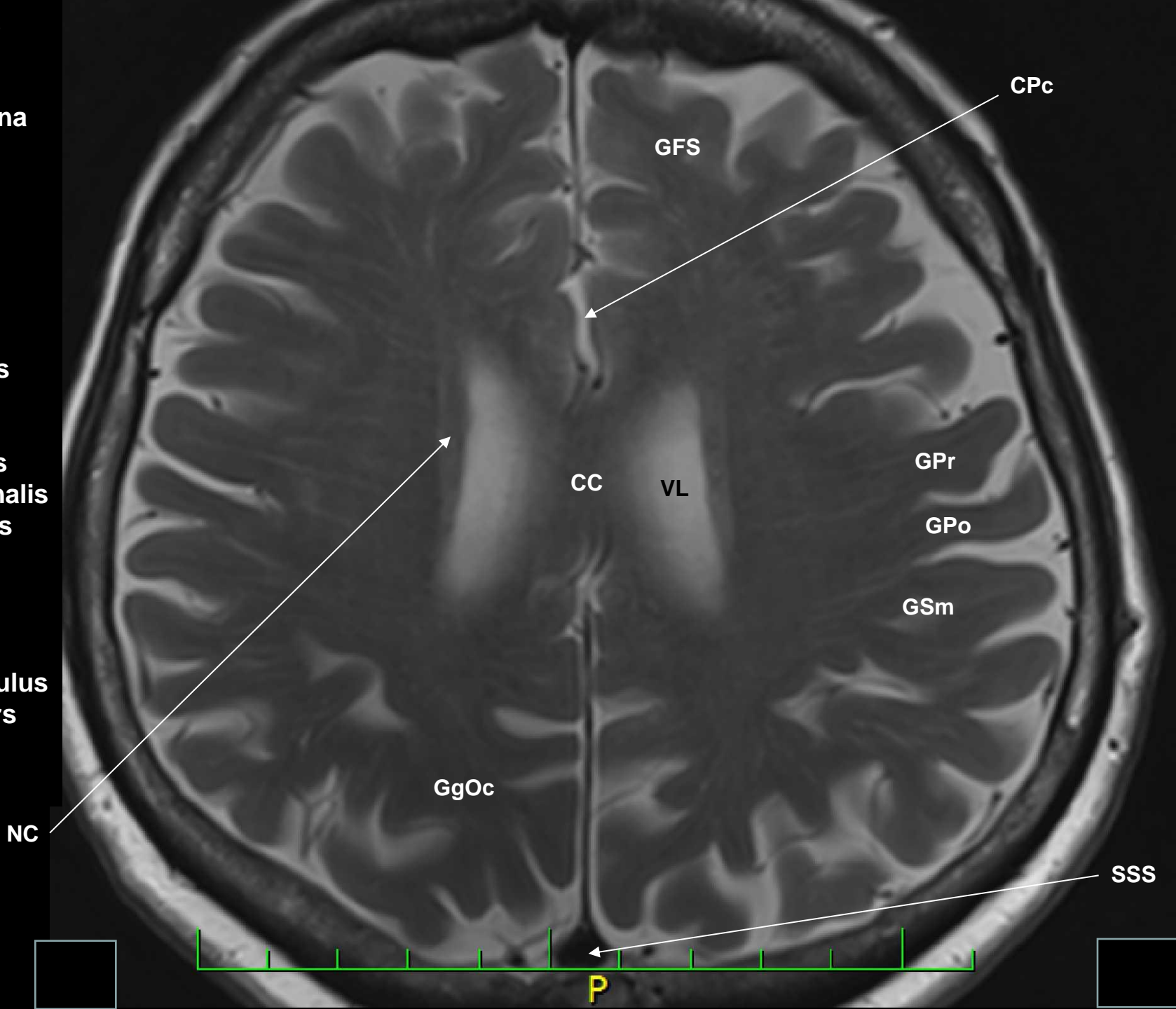
AB – a. basilaris
 ACP – a. cerebri posterior (P1)
 CC-G – corpus callosum (genu)
 CC-R – corpus callosum (rostrum)
 CC-S – corpus callosum (splenium)
 CC-T – corpus callosum (truncus)
 CCh – cisterna chiasmatica
 CI – colliculus inferior
 CPc – cisterna pericallosa
 CPM – cisterna premedullaris
 CPP – cisterna prepontina
 CS – colliculus superior
 GC – gyrus cinguli
 GgO – gyri occipitales
 H – hypophysis
 MO – medulla oblongata
 M – mesencephalon
 NO – n. opticus
 T – thalamus
 SV – septum verum
 VL – ventriculus lateralis
 VQ – ventriculus quartus



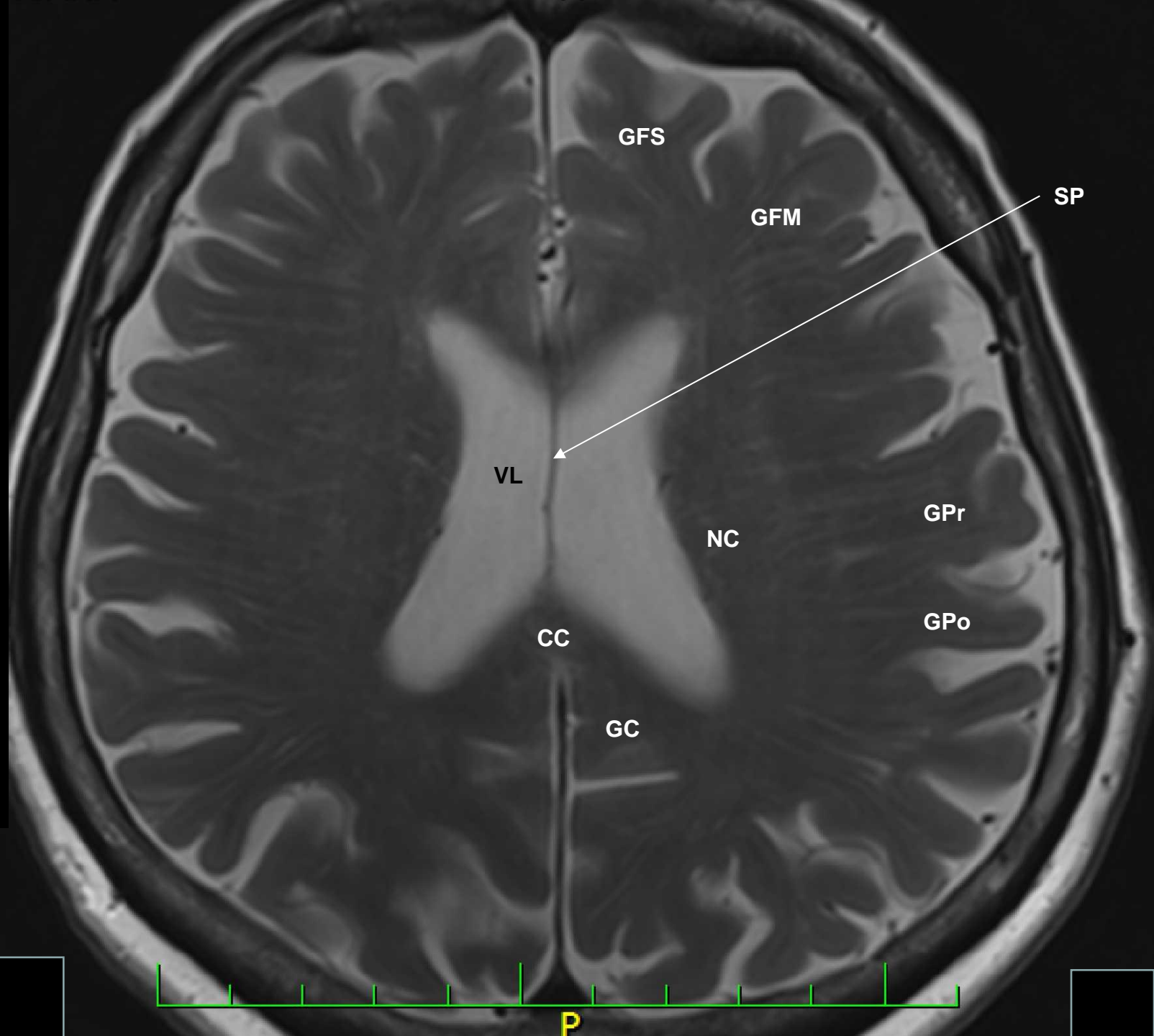


ACM – arteria cerebri media (M3)
C – cochlea
CA – corpus amygdaloideum
CcSc – canales semicirculares
CV – camera vitrea
FL – fossa lateralis
GD – gyrus dentatus
GgOr – gyri orbitales
GgOc – gyri occipitales
GPr – gyrus precentralis
H – hippocampus
Ins – insula
L – lens
VL – ventriculus lateralis (cornu temporale)

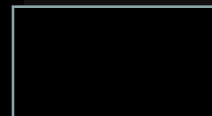
CC – corpus callosum (truncus)
CPc – cisterna pericallosa
GFS – gyrus frontalis superior
GgOc – gyri occipitales
GPO – gyrus postcentralis
GPr – gyrus precentralis
GSm – gyrus supramarginalis
NC – nucleus caudatus
SSS – sinus sagittalis superior
VL – ventriculus lateralis (pars centralis)



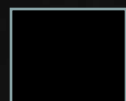
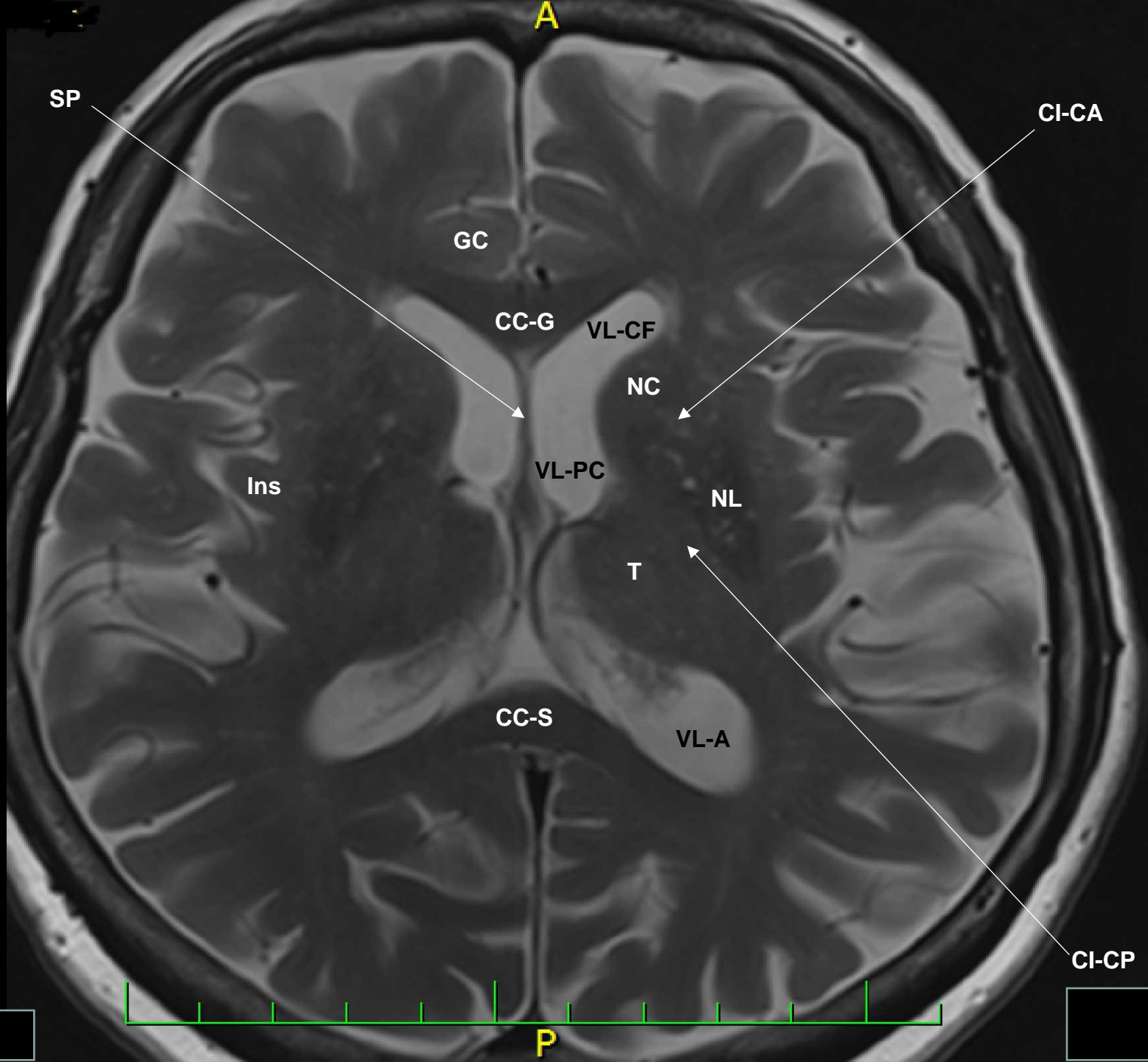
CC – corpus callosum
GC – gyrus cinguli
GFM – gyrus frontalis medius
GFS – gyrus frontalis superior
GgOc – gyri occipitales
GPo – gyrus postcentralis
GPr – gyrus precentralis
GSm – gyrus supramarginalis
NC – nucleus caudatus
SP – septum pellucidum
VL – ventriculus lateralis (pars centralis)



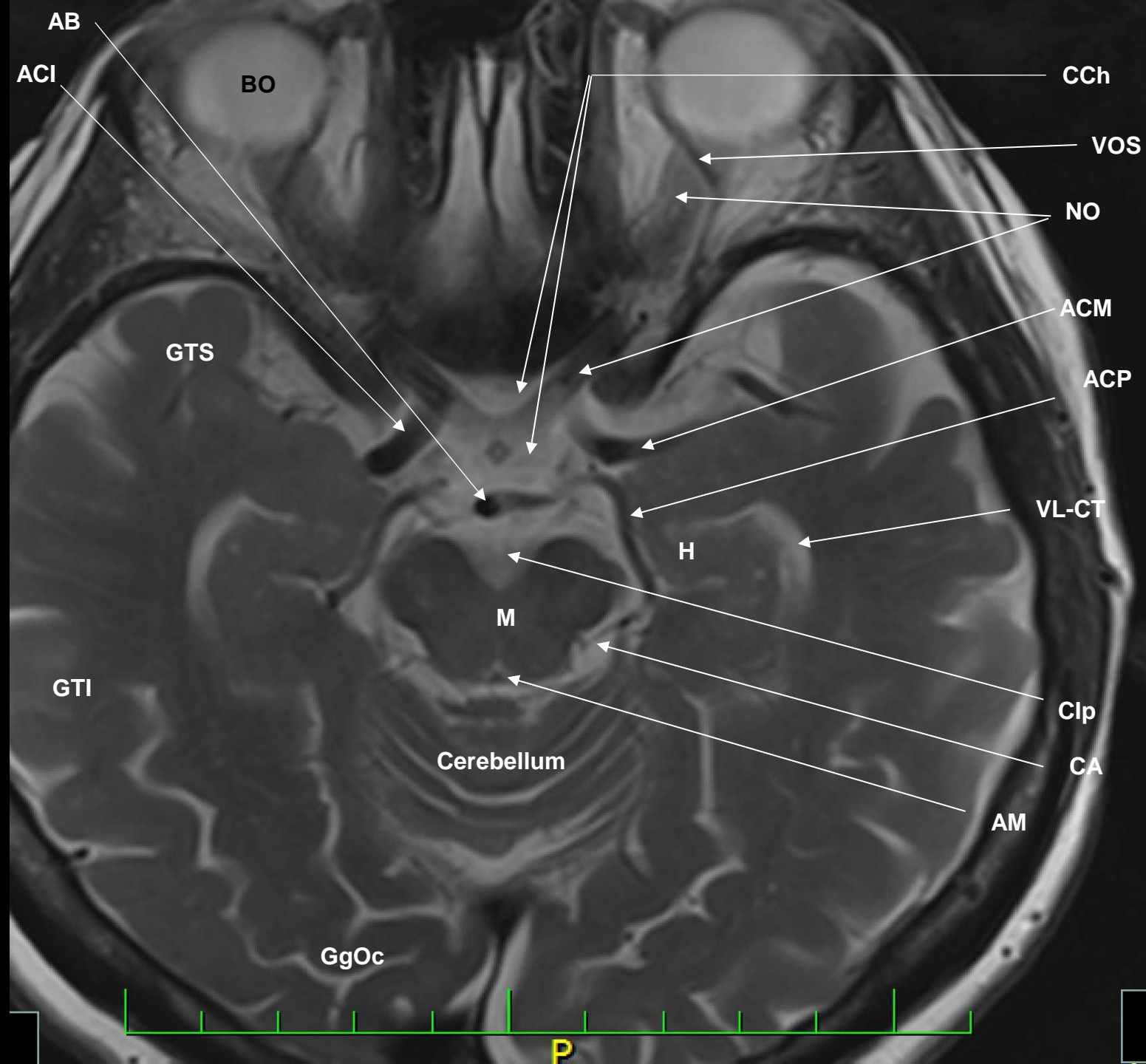
)



CC-G – corpus callosum (genu)
CC-S – corpus callosum (splenium)
CI-CA – capsula interna (crus anterior)
CI-CP – capsula interna (crus posterior)
GC – gyrus cinguli
Ins – insula
NC – nucleus caudatus
NL – nucleus lentiformis
SP – spetum pellucidum
T – thalamus
VL-A – ventriculus lateralis (atrium)
VL-CF – ventriculus lateralis (cornu forntale)
VL-PC – ventriculus lateralis (pars centralis)



AB – a. basilaris
AM – aqueductus
 mesencephali
ACI – a. carotis
 interna (C7)
ACM – a. cerebri
 media (M2)
ACP – a. cerebri
 posterior (P2)
BO – bulbus oculi
CA – cisterna
 ambiens
CCh – cisterna
 chiasmatica
Clp – cisterna
 interpeduncularis
GgOc – gyri
 occipitales
GTS – gyrus
 temporalis
 superior
GTI – gyrus
 temporalis inferior
H – hippocampus
M –
 mesencephalon
NO – n. opticus
VL-CT –
 ventriculus
 lateralis (cornu
 temporale)
VO – v.
 ophthalmica



AB – a. basilaris
 ACI – a. careotis
 interna (C)
 CE – cellulae
 ethmoidales
 CPp – cisterna
 prepontina
 CV – camera vitrea
 H – hypophysis
 L – lens
 GL – gyrus lingualis
 GTI – gyrus
 temporalis inferior
 MRL – m. rectus
 lateralis
 MRM – m. rectus
 medialis
 NO – n. opticus
 SS – sinus
 sphenoidalis
 VQ – ventriculus
 quartus

AB

.0

VQ

ACI

L

CV

CE

SS

Pons

Cerebellum

GL

GTI

MRM

NO

MRL

H

CPp

P

17

