

Kosti a klouby lebky a  
osové kostry

Bones and joints  
of skull and axial  
skeleton

# RTG lebky, frontální pohled

X-ray picture of the skull, frontal view

sutura coronalis



ala minor ossis sphenoidalis

fissura orbitalis superior

cellulae ethmoidales

concha nasalis media

concha nasalis inferior

angulus mandibulae

sutura sagittalis

sutura lambdoidea

sinus frontalis

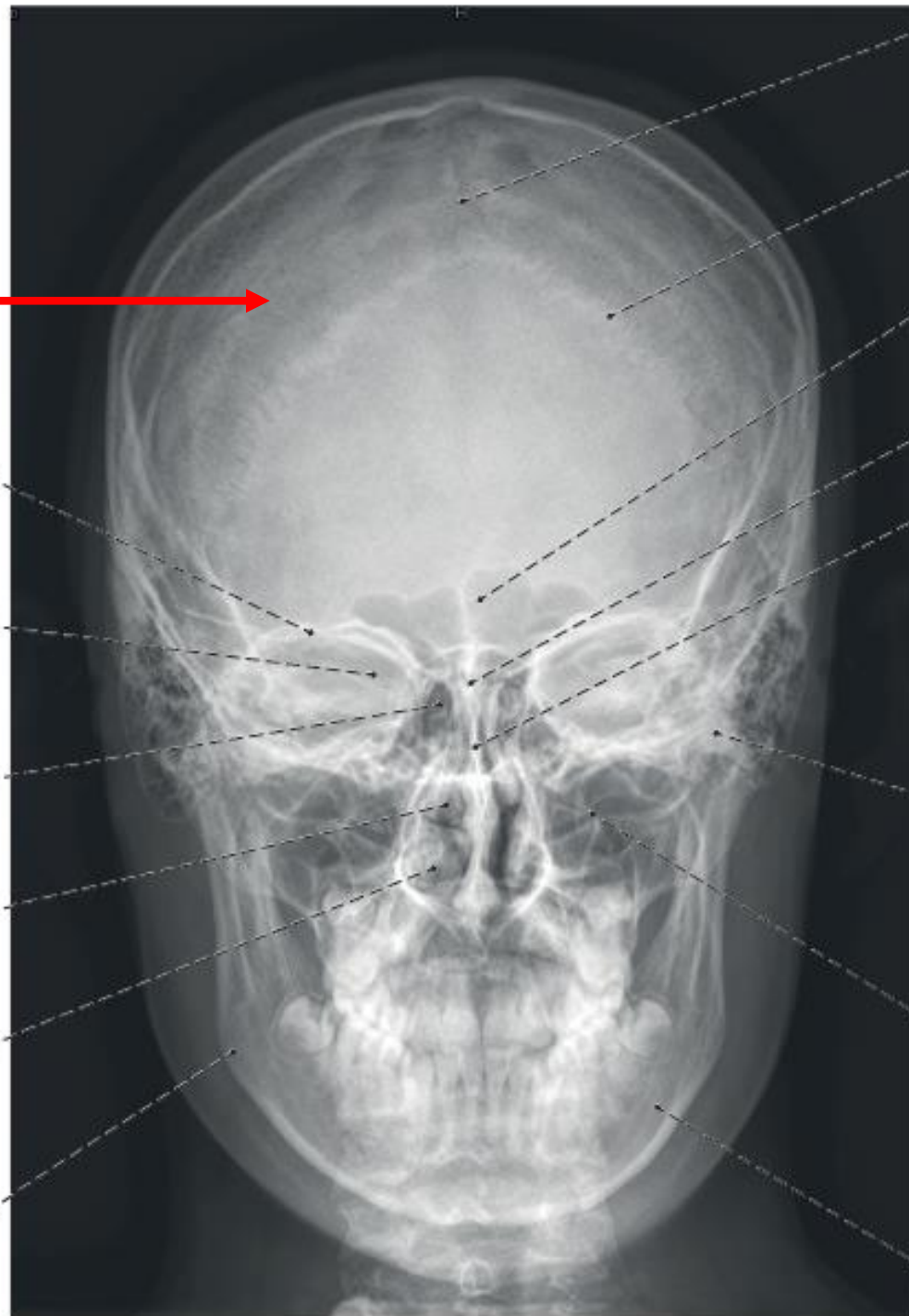
lamina cribrosa ossis ethmoidalis

septum nasi

os zygomaticum

sinus maxillaris

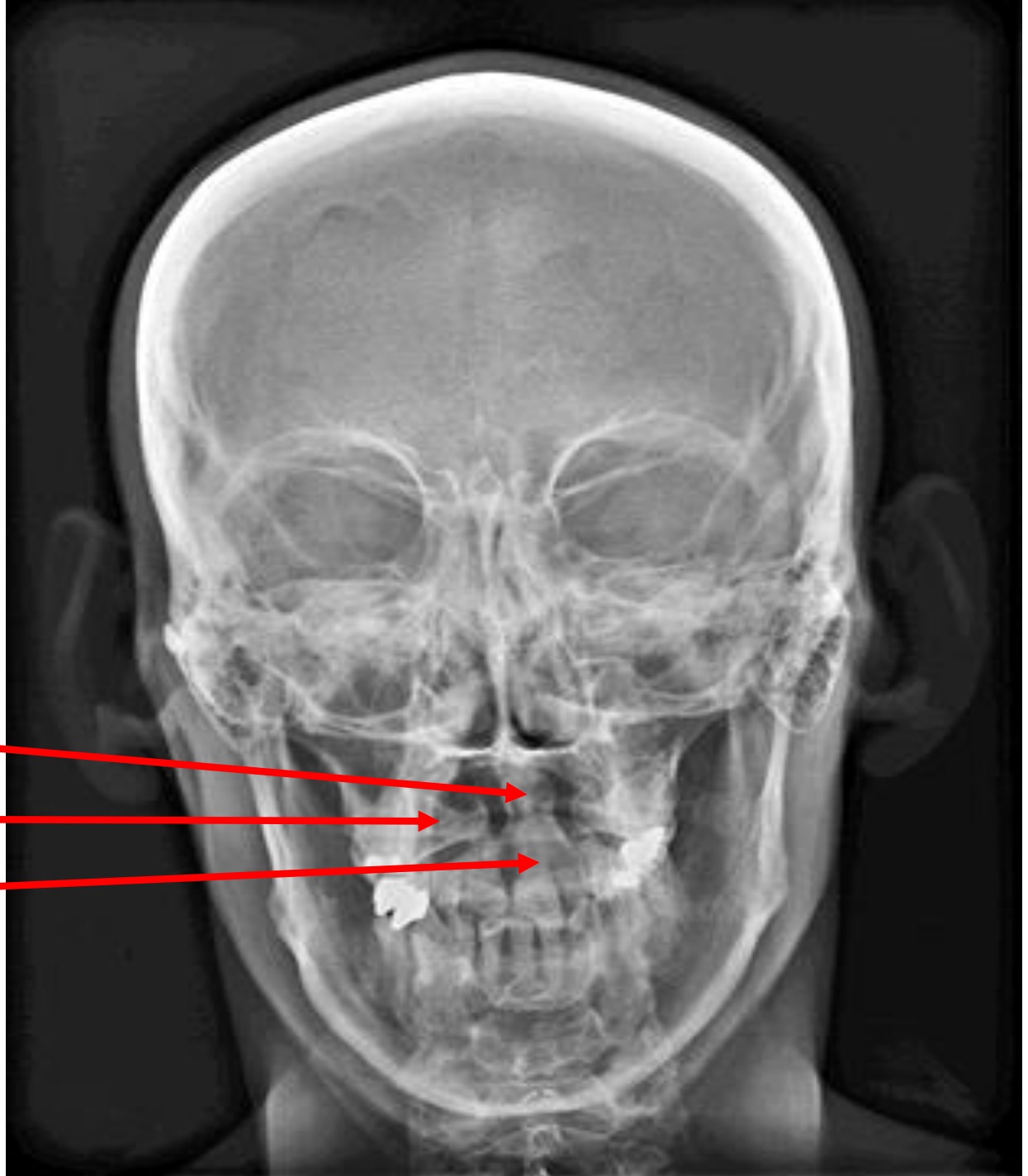
mandibula



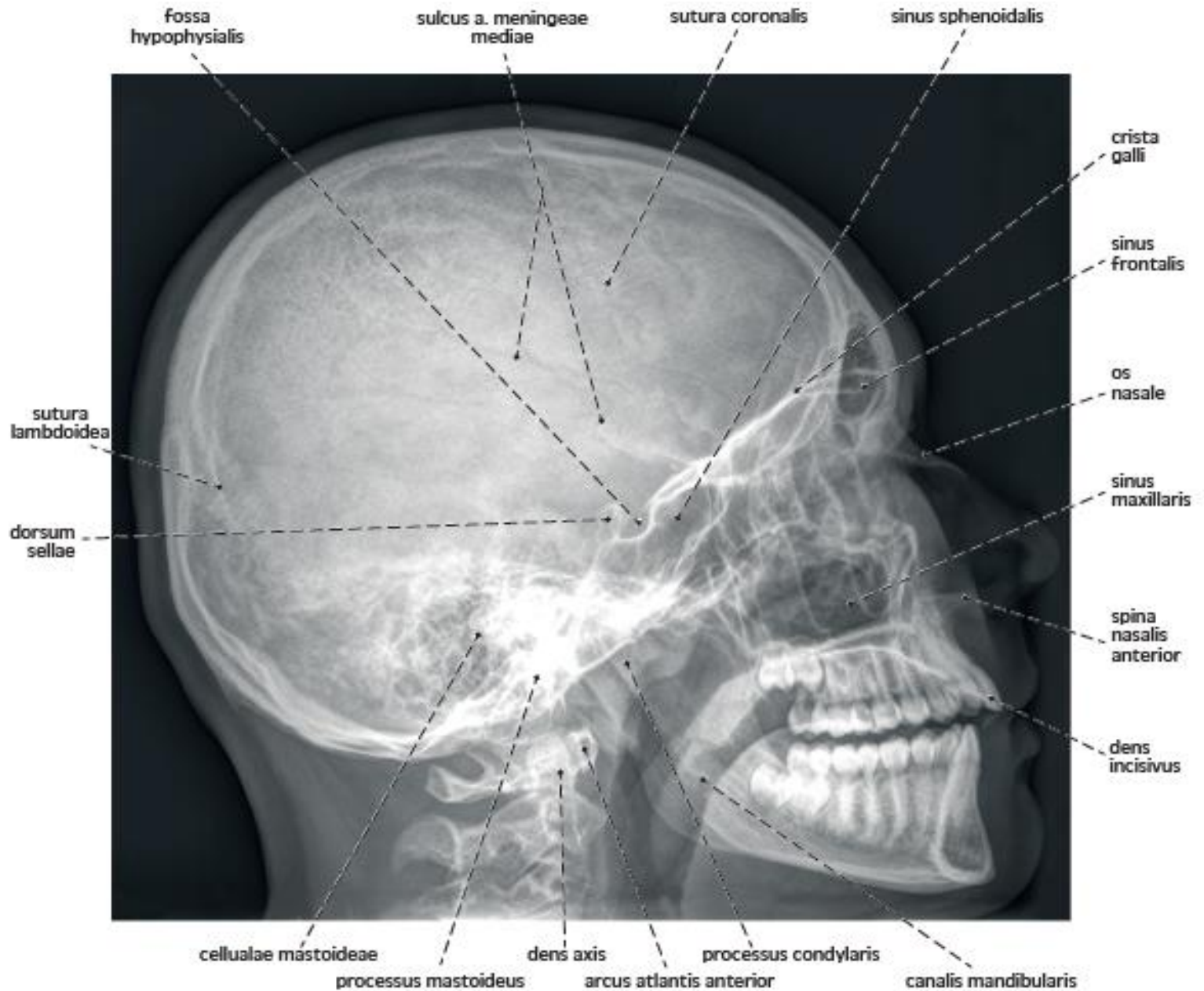
RTG lebky, frontální pohled

X-ray picture of the skull,  
frontal view

Dens axis  
Massa lateralis atlantis  
Corpus axis



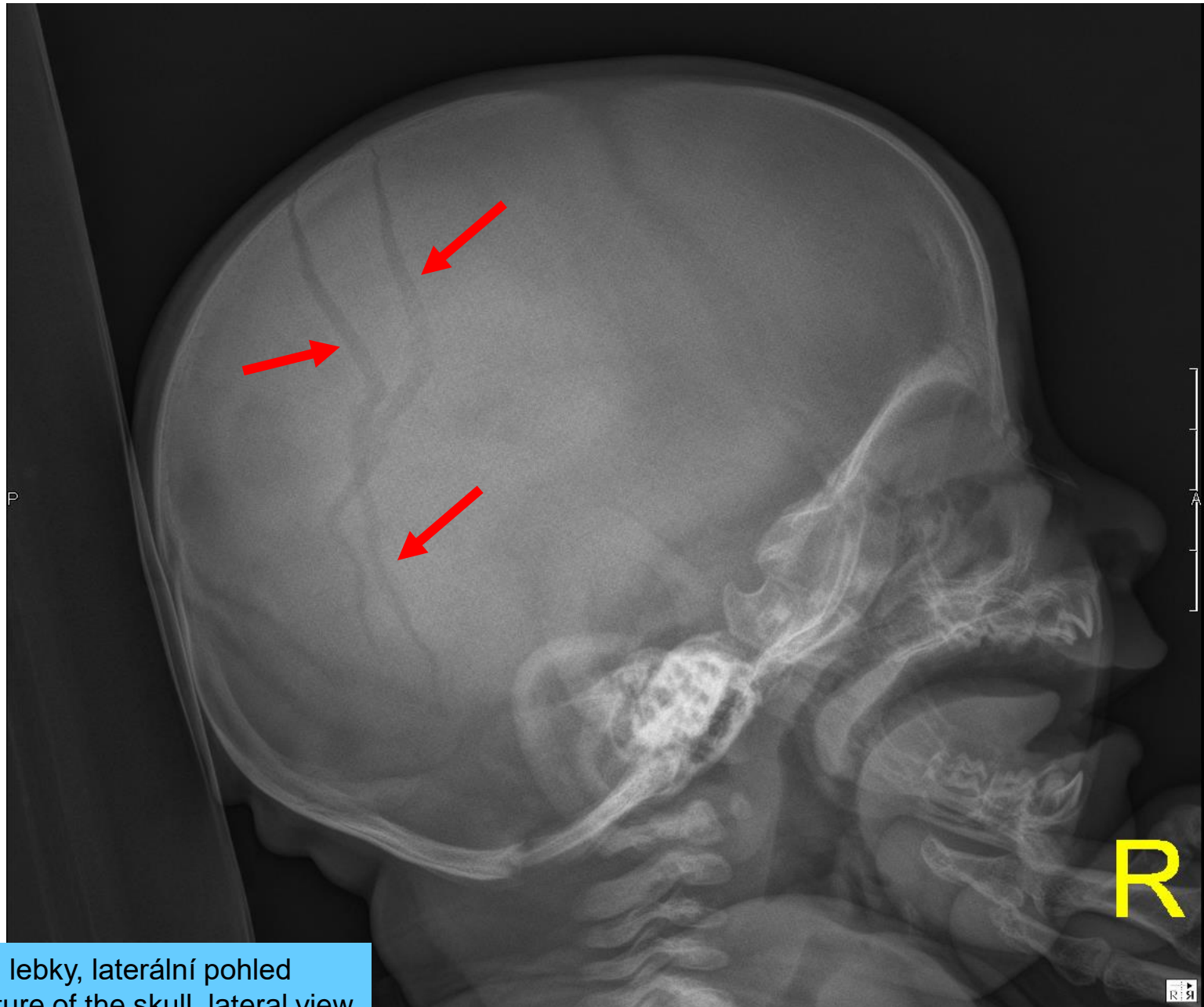
RTG lebky, laterální pohled  
X-ray picture of the skull, lateral view



RTG lebky, laterální pohled  
X-ray picture of the skull, lateral view



# Fractura ossis parietalis bilateralis



RTG lebky, laterální pohled  
X-ray picture of the skull, lateral view

fonticulus anterior

sutura sagittalis

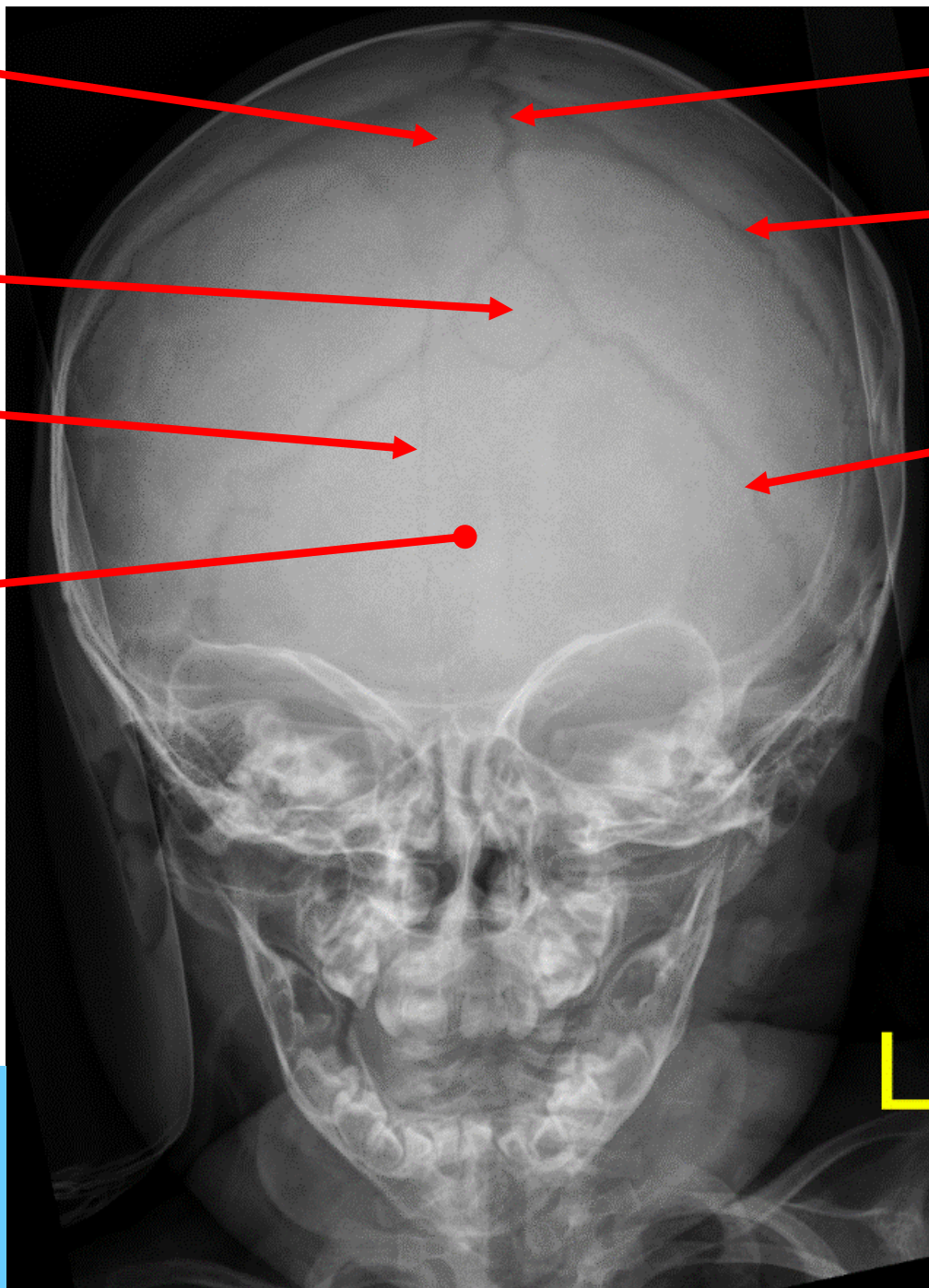
os interparietale

sutura coronalis

sutura frontalis  
persistens

sutura lambdoidea

os occipitale

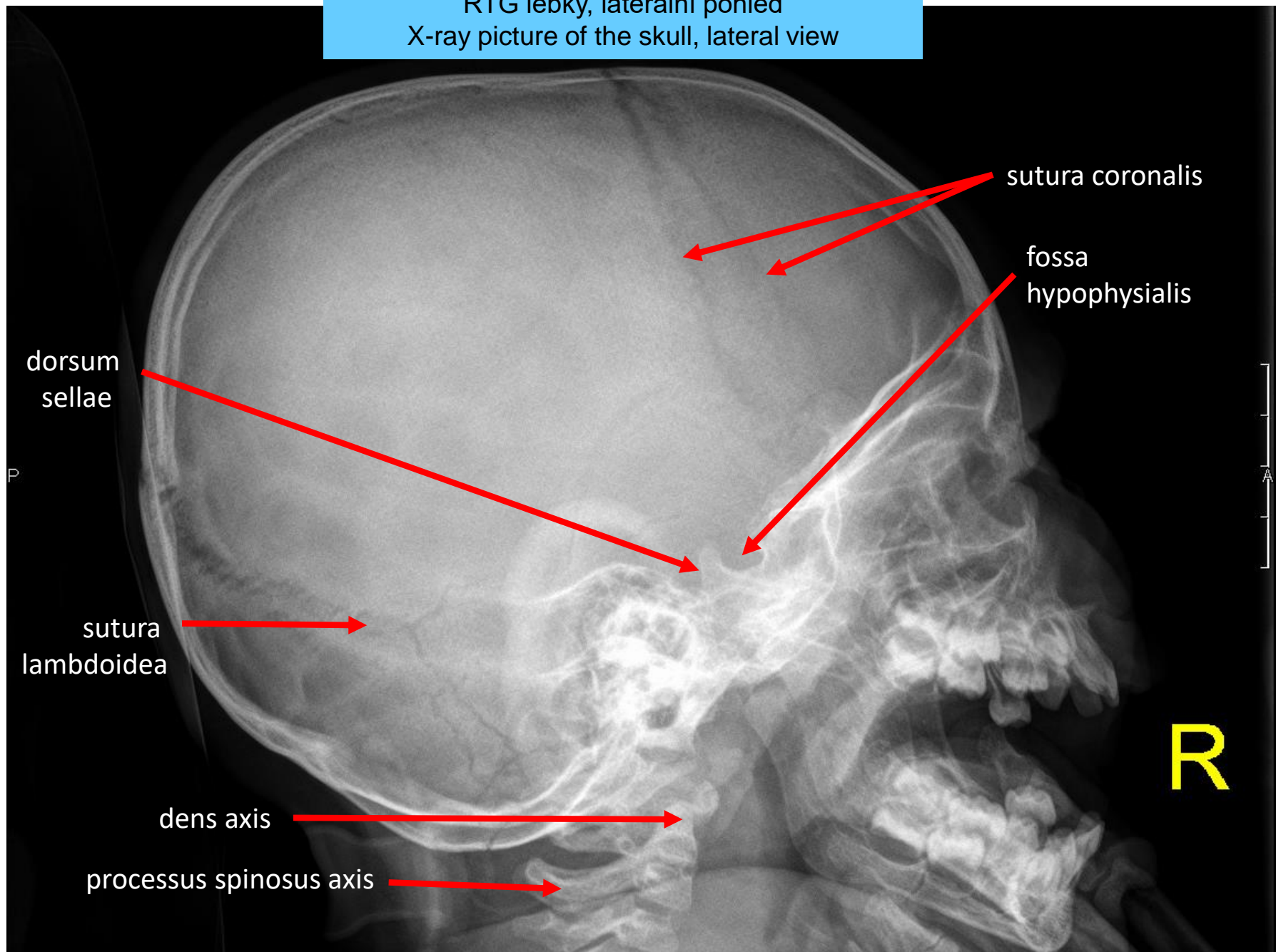


RTG lebky,  
frontální pohled

X-ray picture of the skull,  
frontal view

*8 měsíců / months*

RTG lebky, laterální pohled  
X-ray picture of the skull, lateral view



dorsum  
sellae

sutura coronalis

fossa  
hypophysialis

sutura  
lambdoidea

dens axis

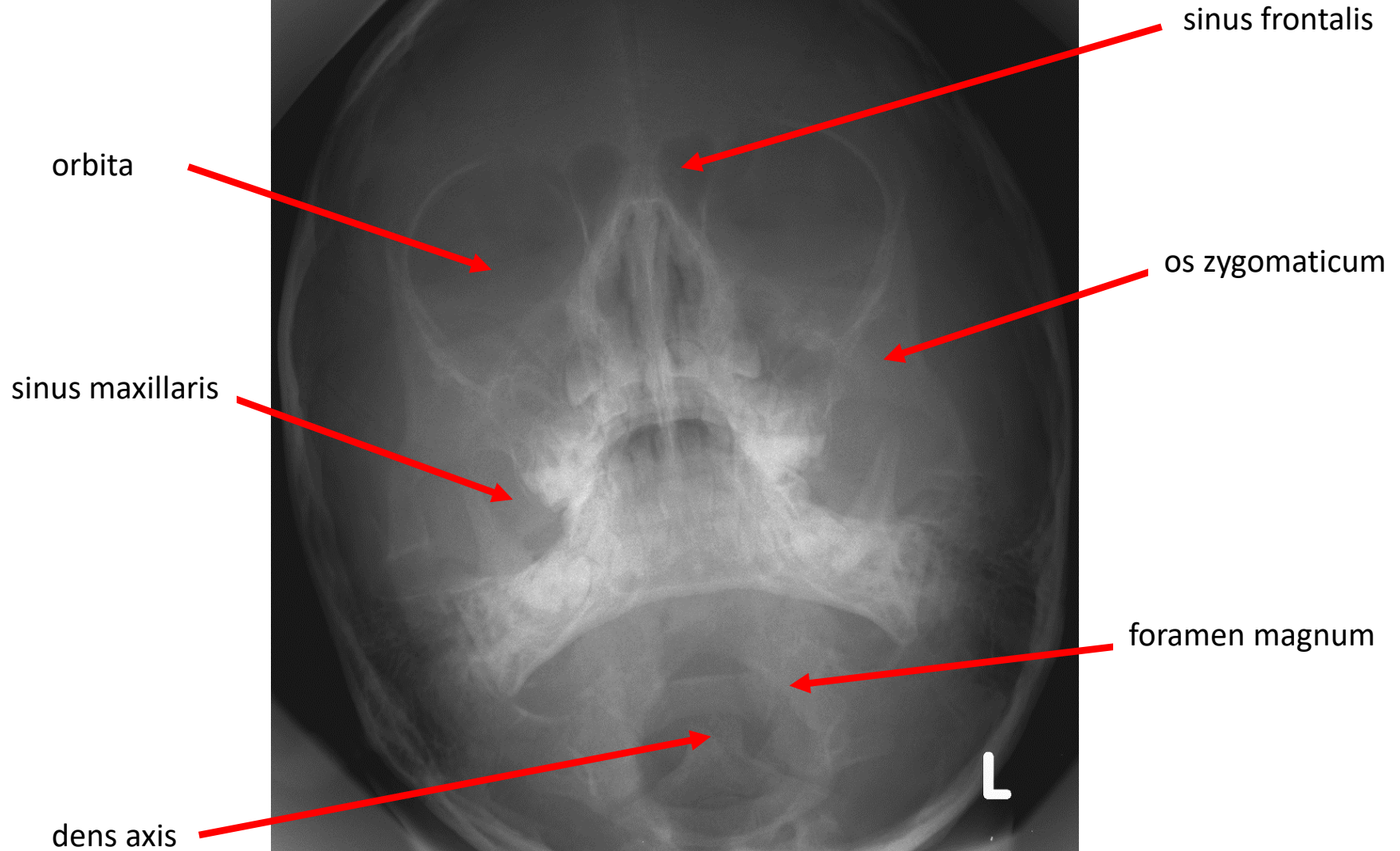
processus spinosus axis

R

16 měsíců / 16 months

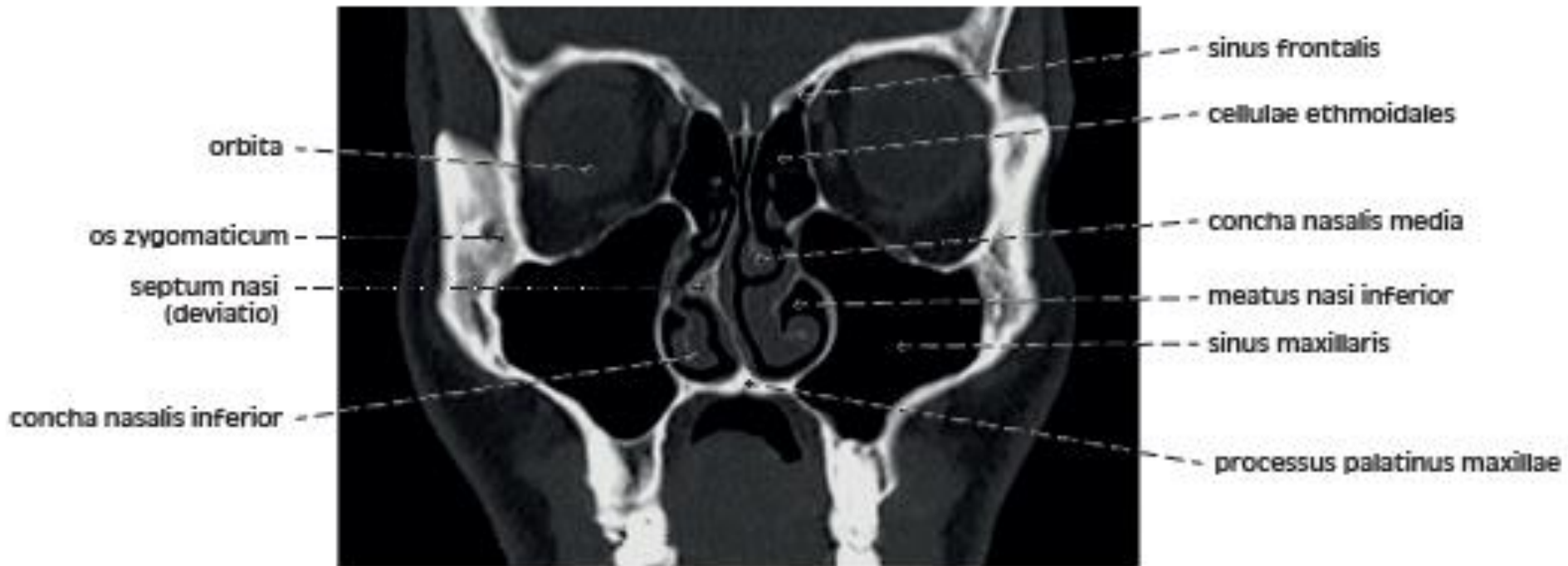


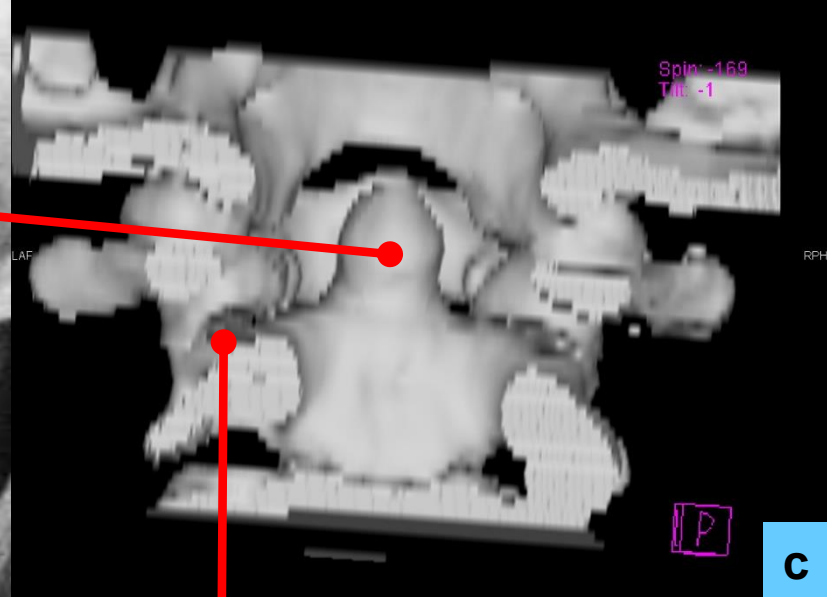
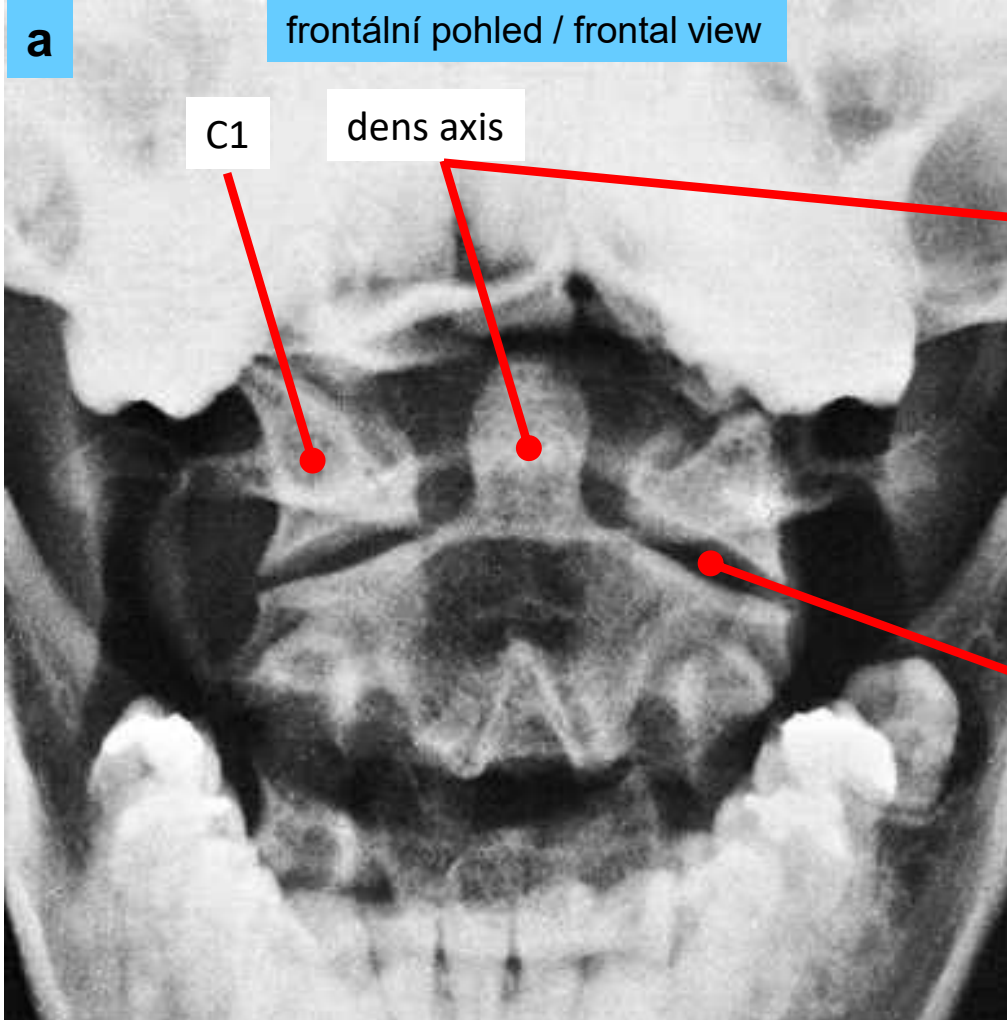
RTG lebky, okcipitomentální projekce  
X-ray picture of the skull, occipito-mental projection



CT lebky – nosní dutina a vedlejší nosní dutiny,  
frontální pohled

CT scan of skull – nasal cavity and paranasal  
sinuses, frontal view



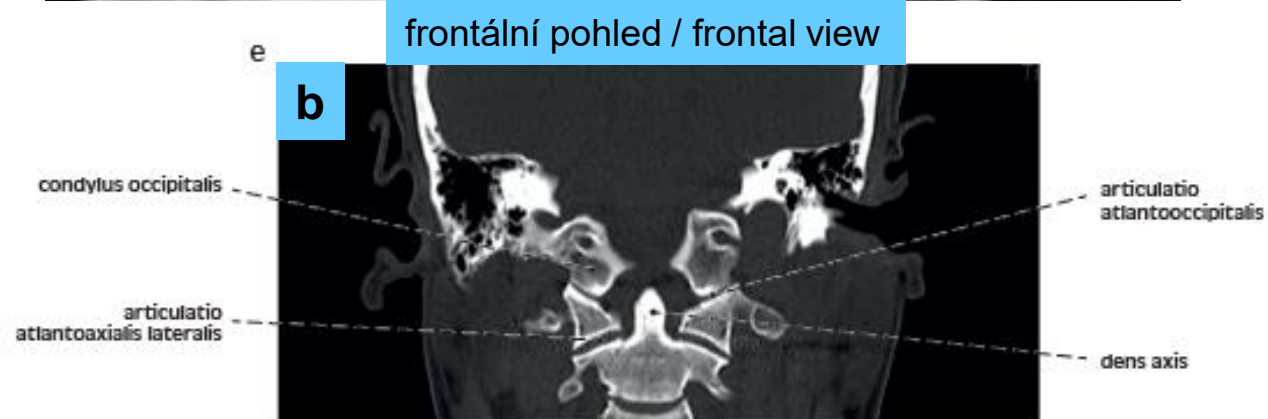


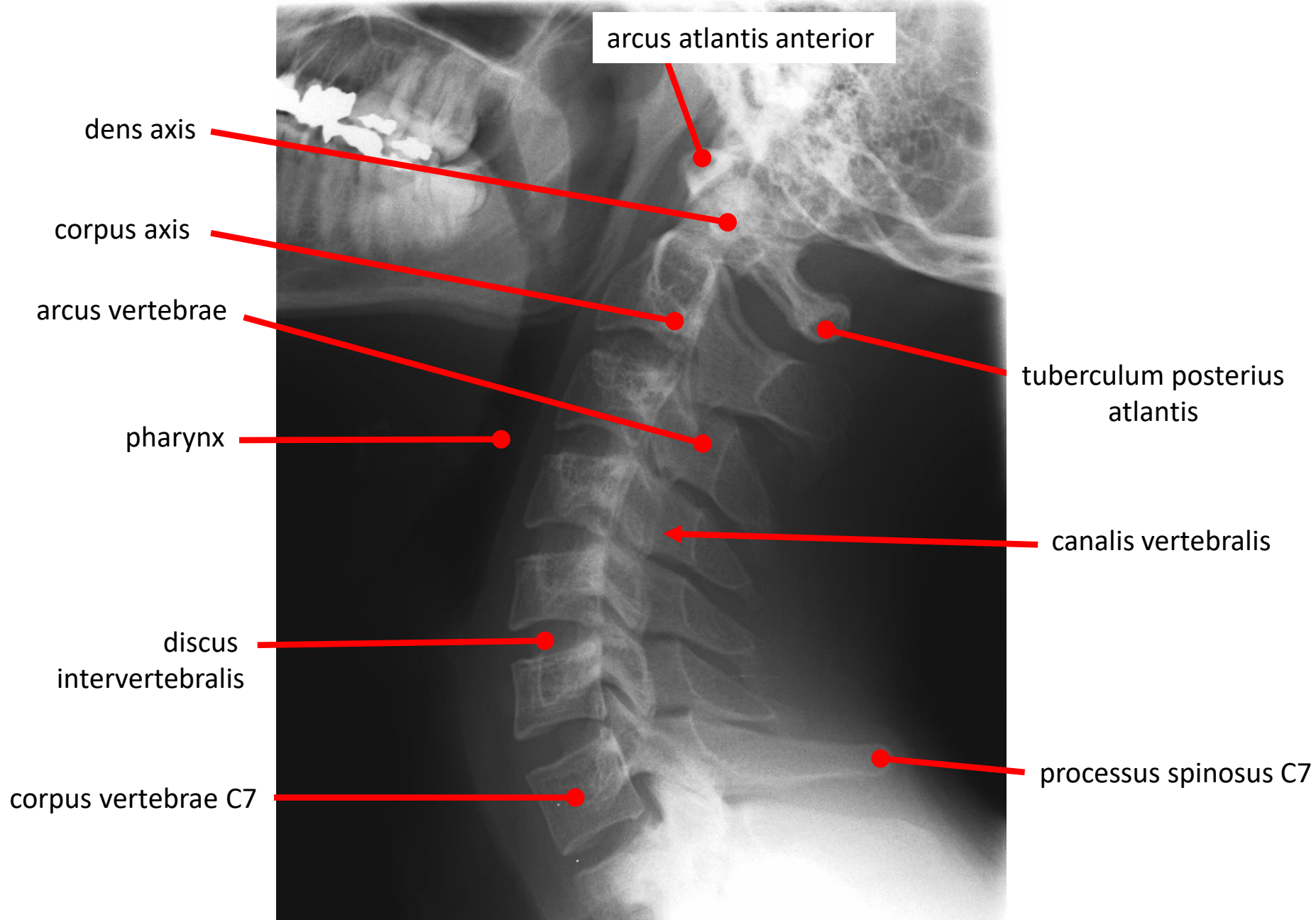
dorzální pohled / dorsal view

articulatio atlantoaxialis lateralis

Obratel C2 (čepovec)  
RTG (a)  
CT (b)  
CT rekonstrukce (c)

Vertebra C2 (axis)  
X-ray (a)  
CT (b)  
CT reconstruction (c)

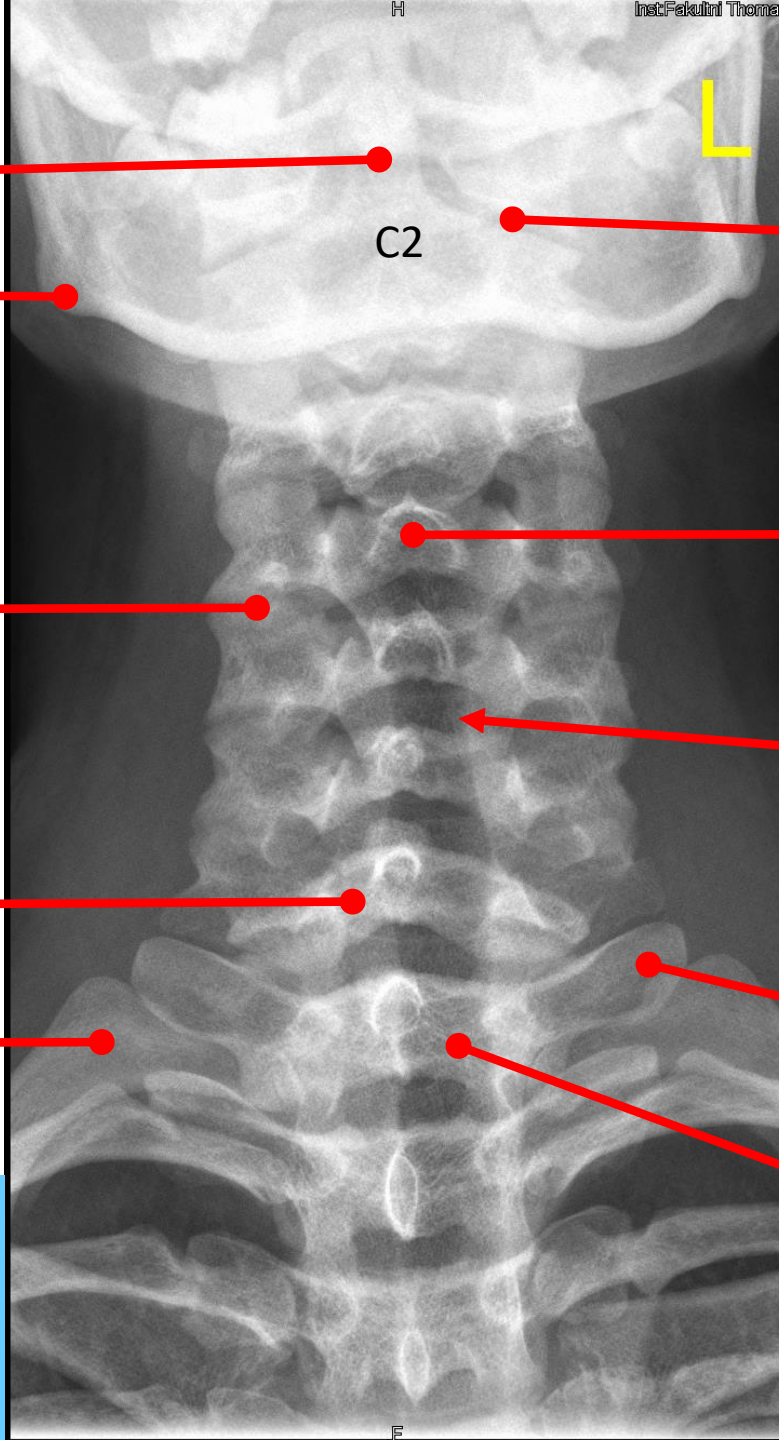




RTG krční páteře, laterální pohled

X-ray picture of the cervical part of the vertebral column, lateral view

zaklon



dens axis

C2

articulatio atlantoaxialis  
lateralis

angulus  
mandibulae

articulatio  
zygapophysialis

processus spinosus

canalis vertebralis

C7

costa prima

processus transversus

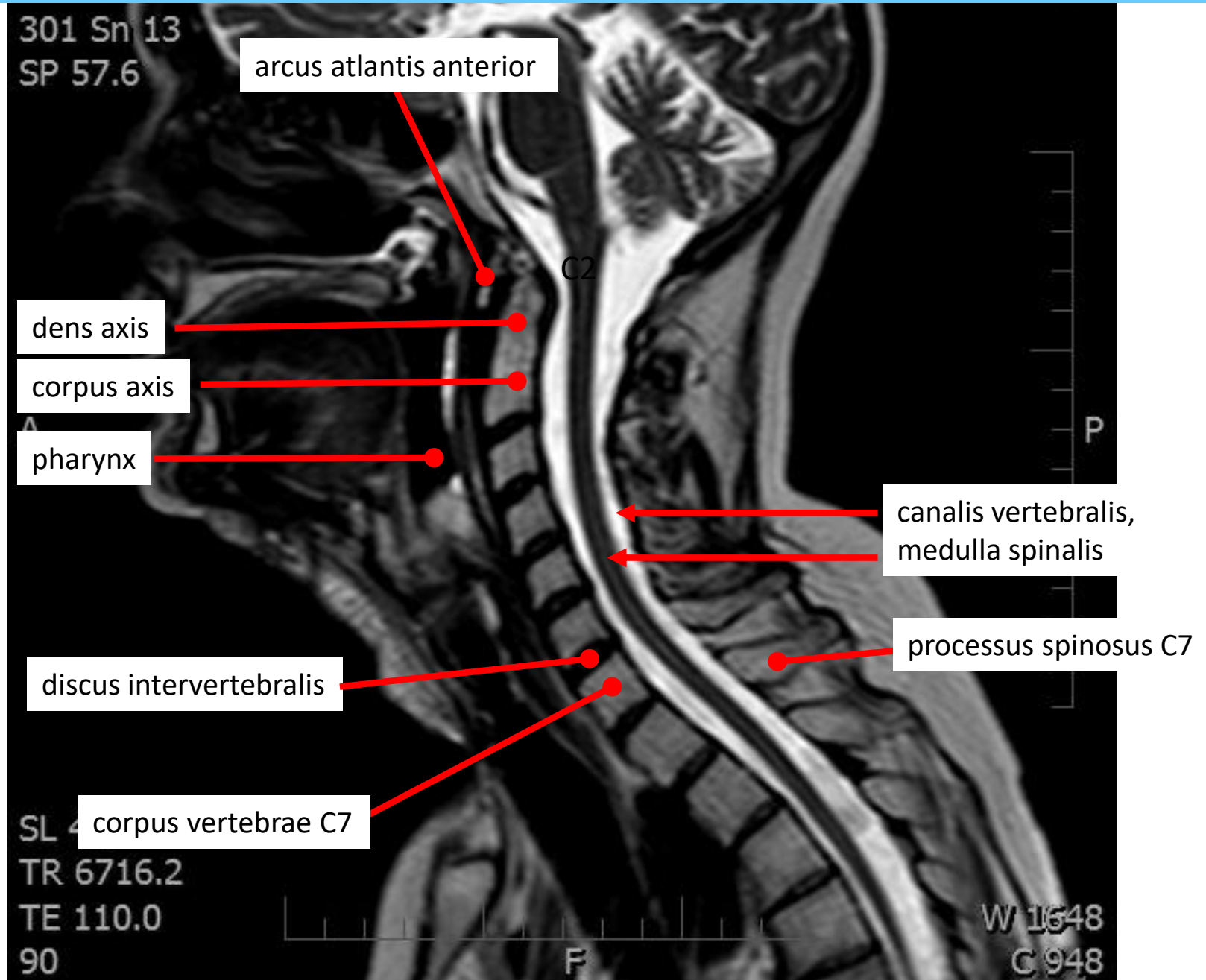
T1

RTG krční páteře,  
frontální pohled

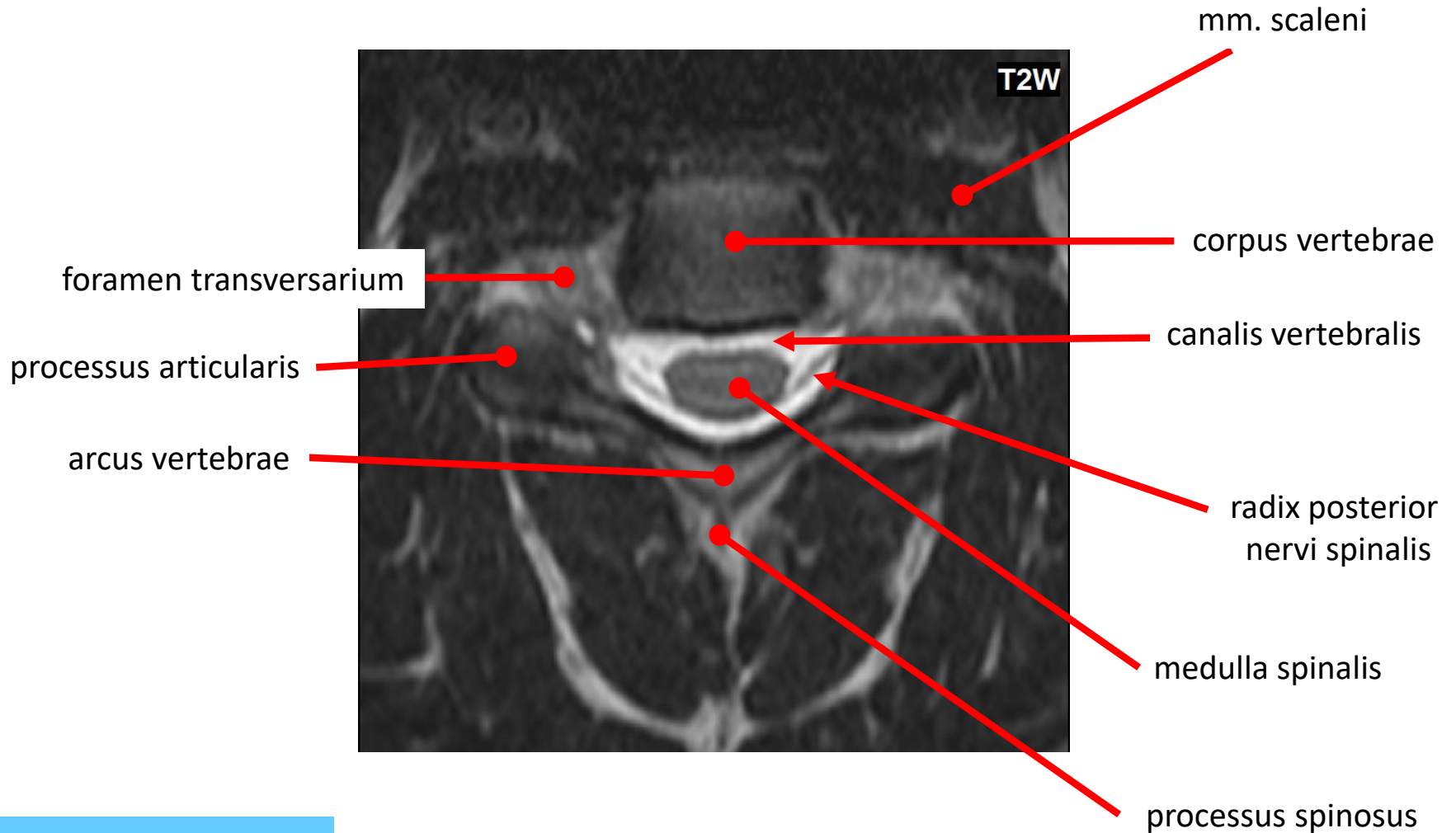
X-ray picture of the cervical  
part of the vertebral column,  
frontal view

MRI krční páteře, laterální pohled

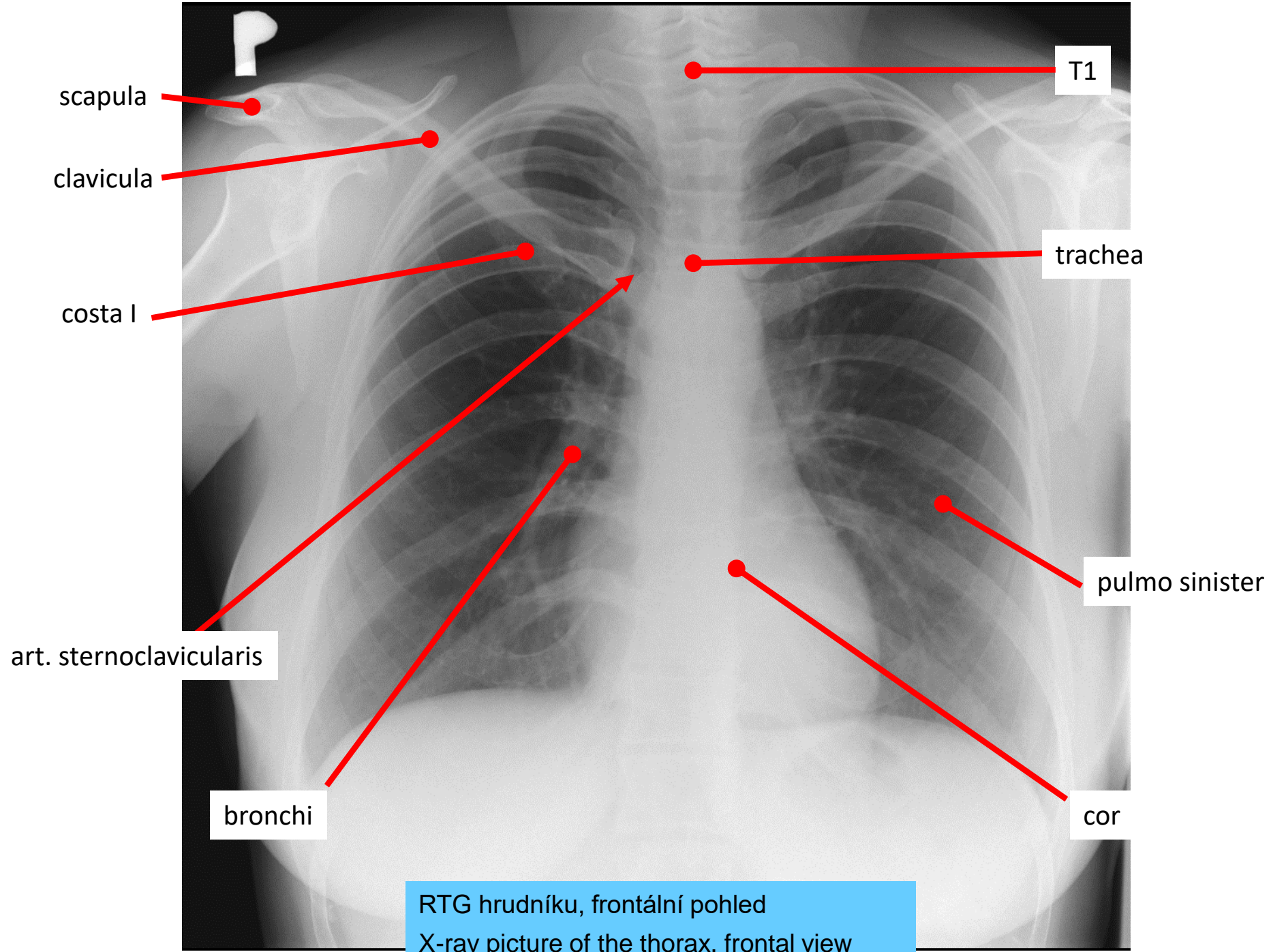
MRI scan of the cervical part of the vertebral column, lateral view



# Vertebra cervicalis quarta (C4)



MRI krční páteře,  
transverzální pohled  
MRI scan of the cervical  
spine, transversal view



scapula

clavicula

costa I

art. sternoclavicularis

bronchi

T1

trachea

pulmo sinister

cor

RTG hrudníku, frontální pohled  
X-ray picture of the thorax, frontal view



RTG hrudníku, frontální pohled  
X-ray picture of the thorax, frontal view

costa X

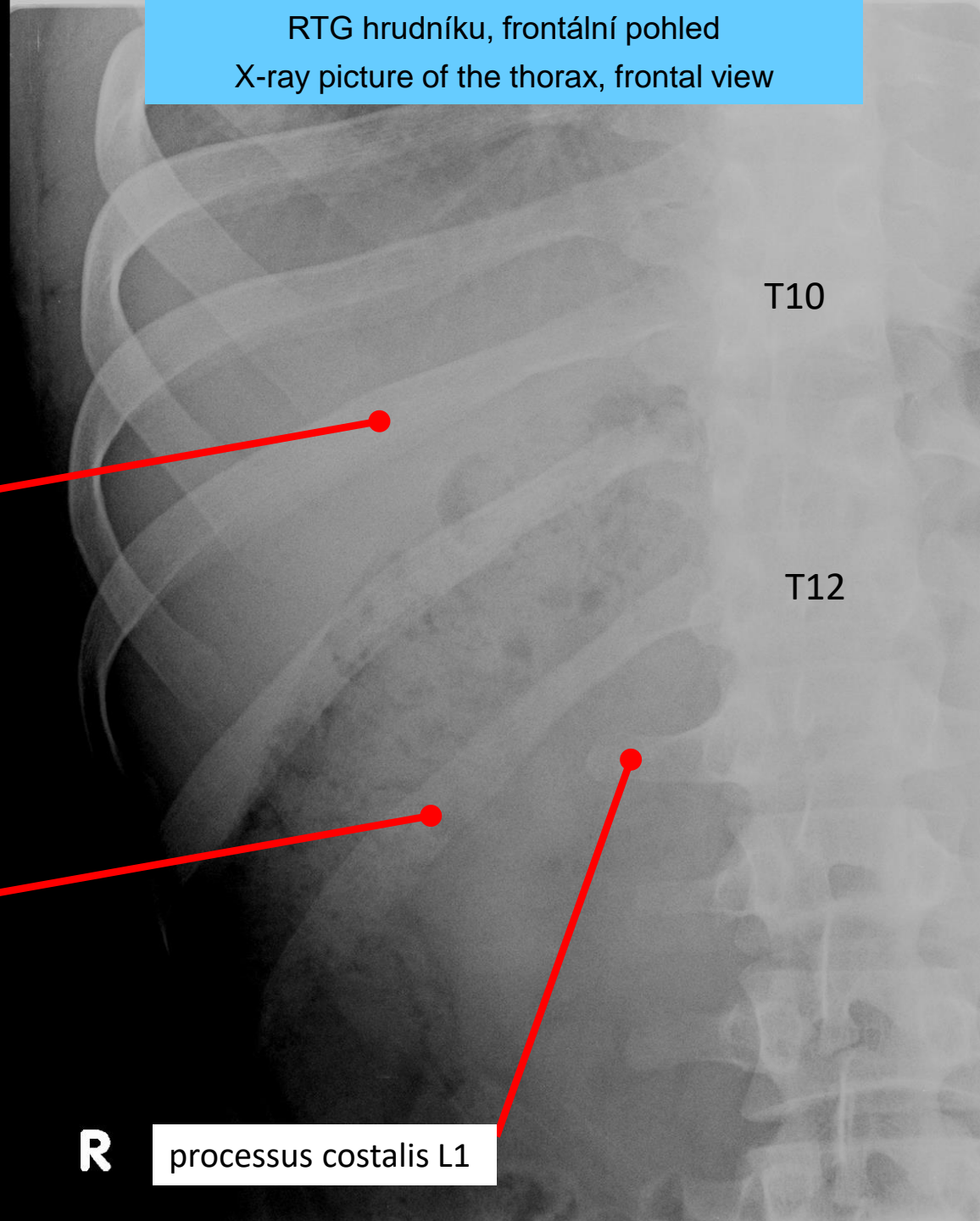
T10

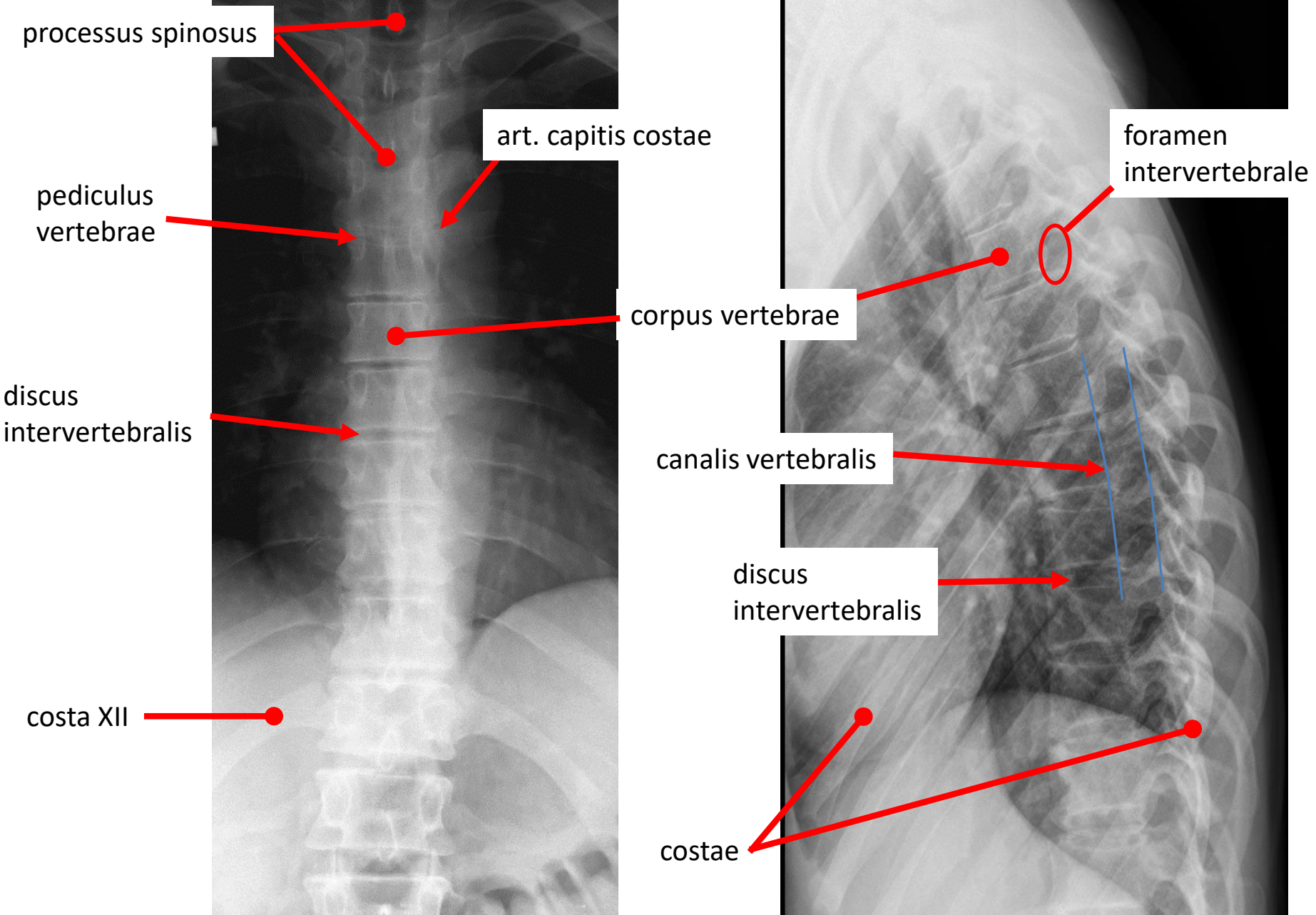
T12

costa XII

**R**

processus costalis L1





processus spinosus

art. capitis costae

foramen intervertebrale

pediculus vertebrae

corpus vertebrae

discus intervertebralis

canalis vertebralis

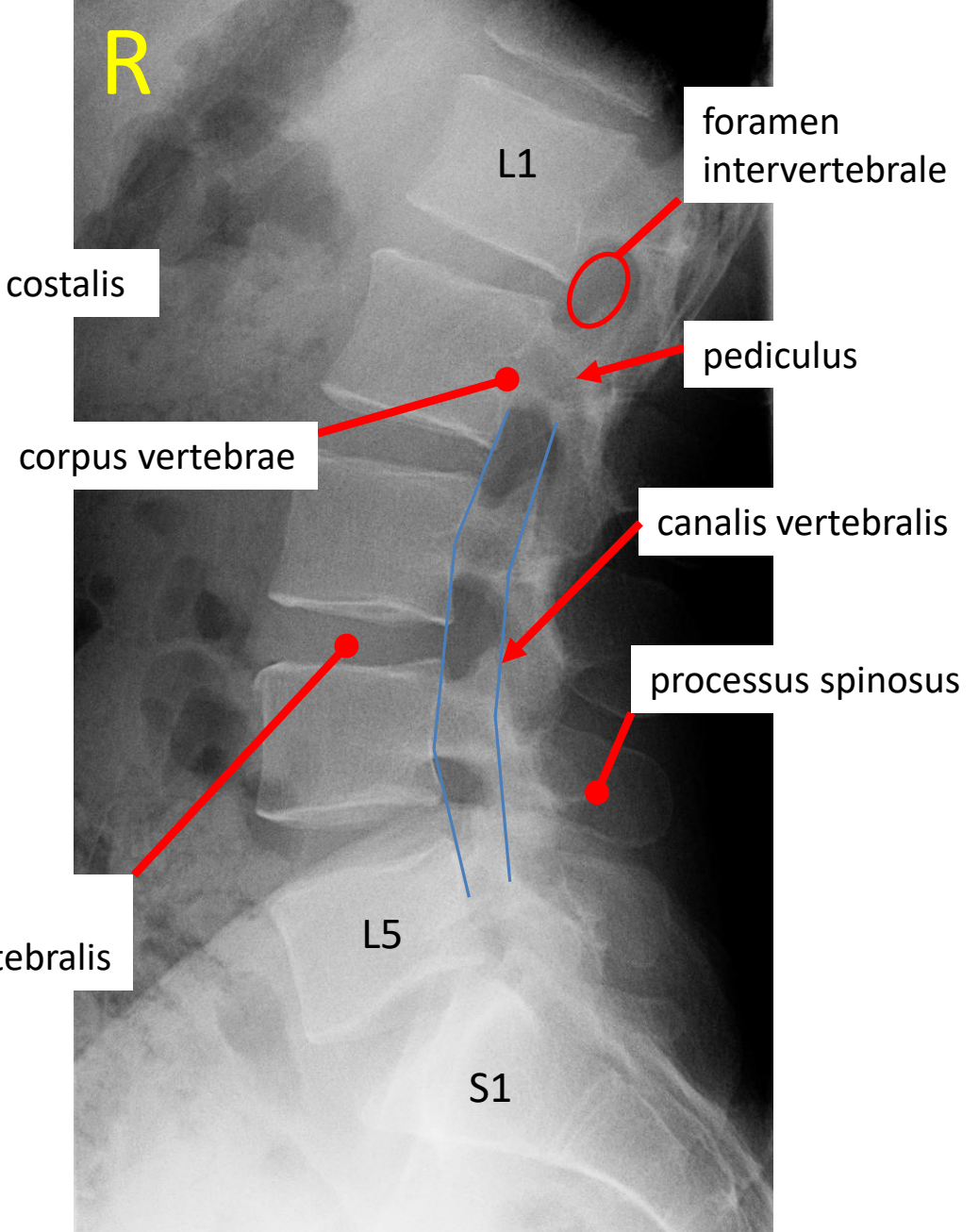
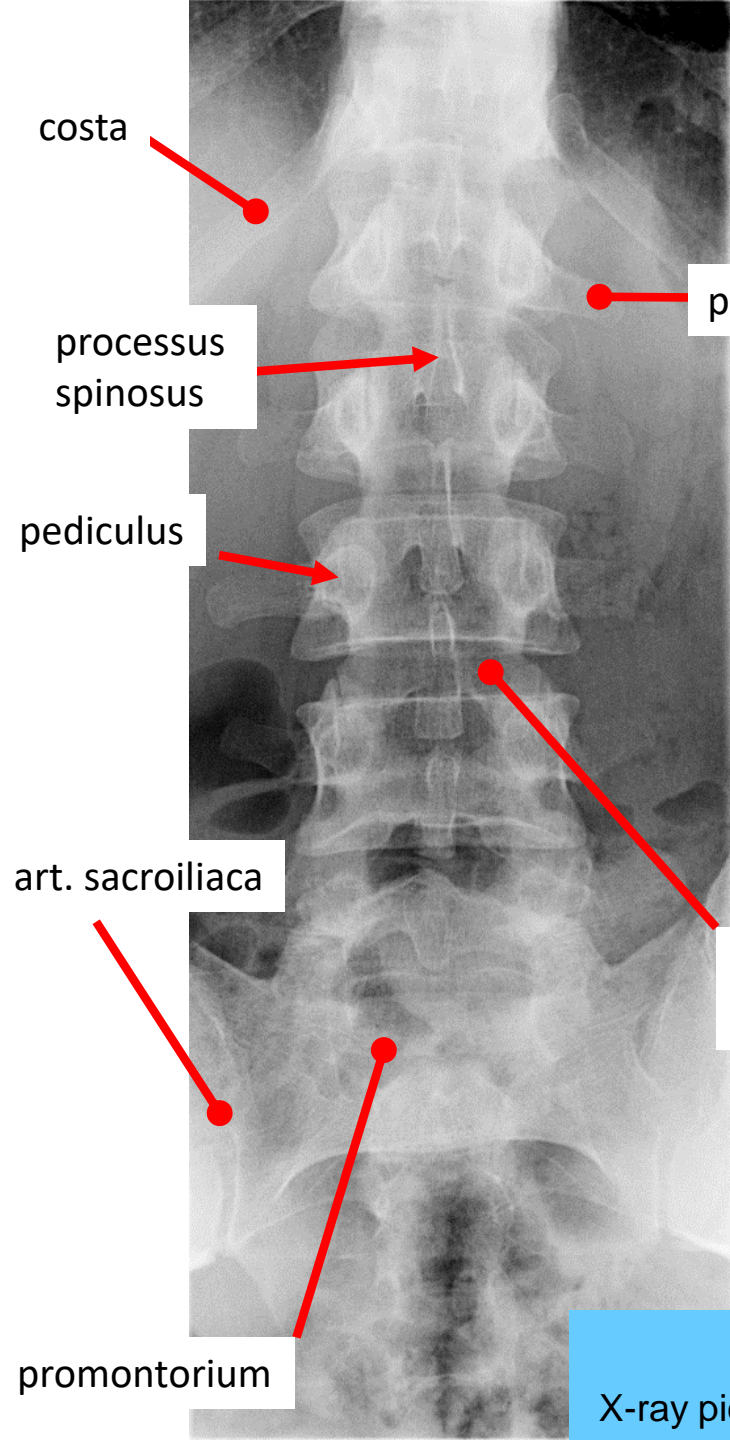
discus intervertebralis

costa XII

costae

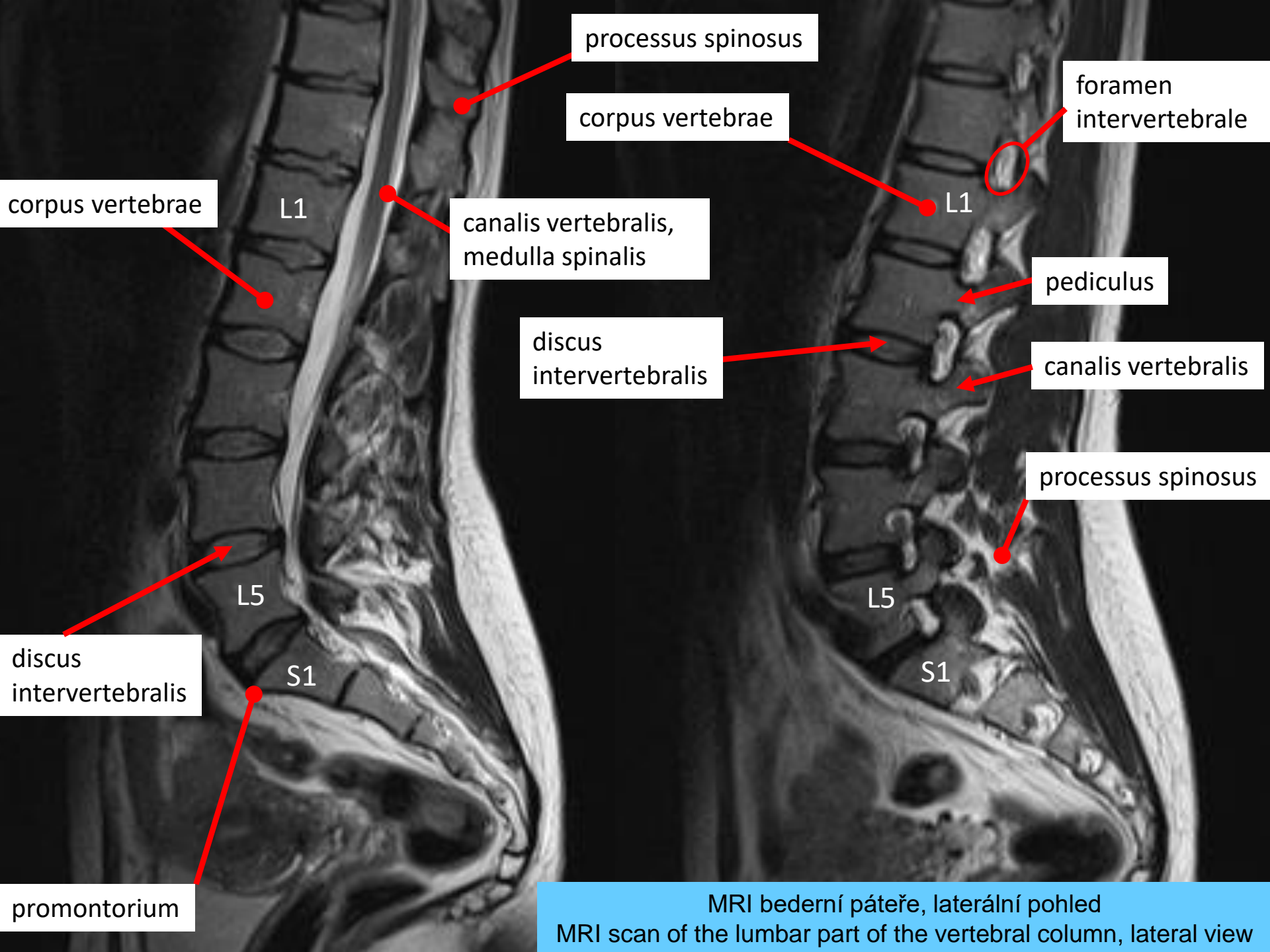
RTG hrudní páteře, frontální a laterální pohled  
X-ray picture of the thoracic part of the vertebral column, frontal and lateral view





RTG bederní páteře, frontální a laterální pohled

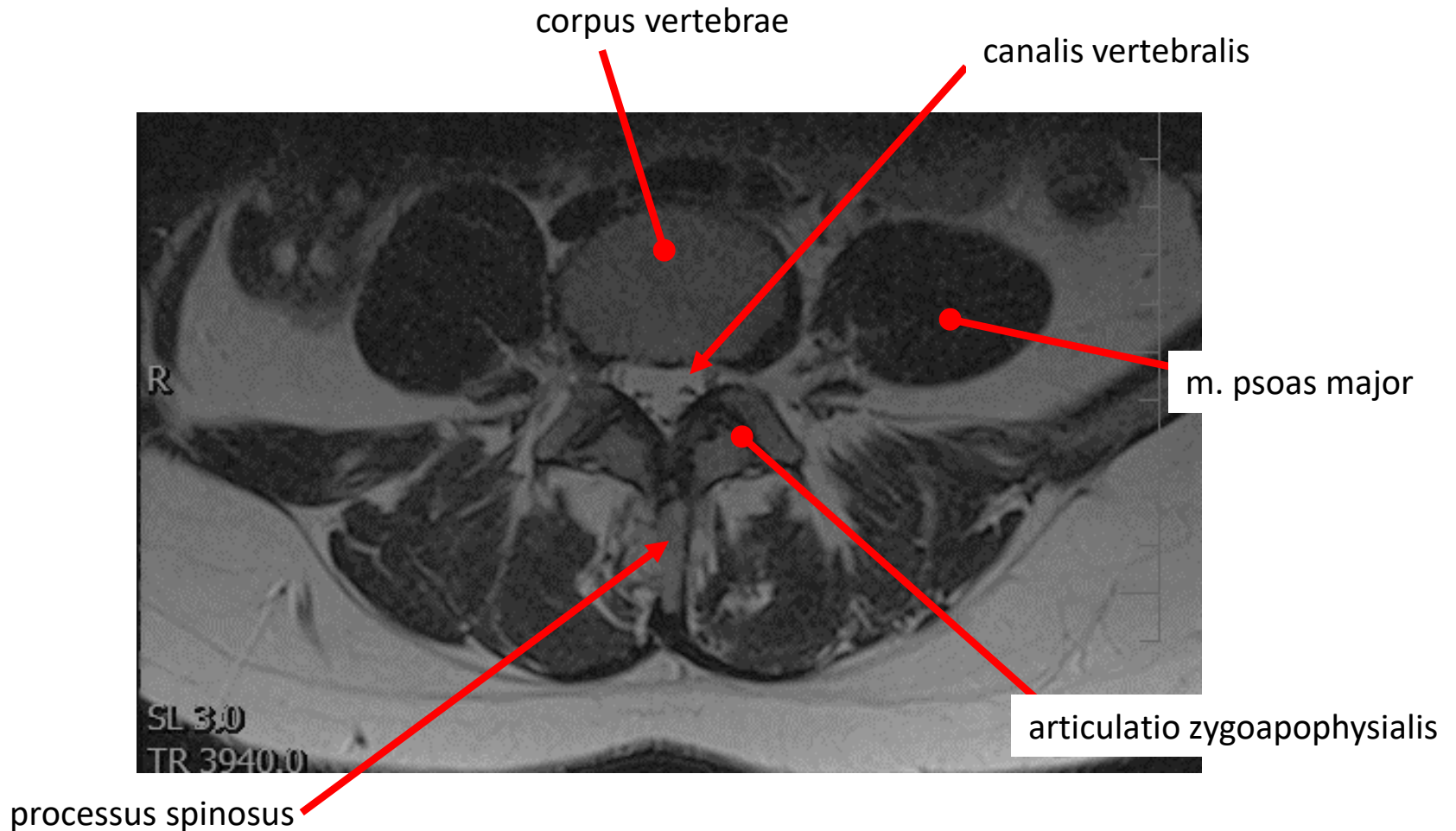
X-ray picture of the lumbar part of the vertebral column, frontal and lateral view



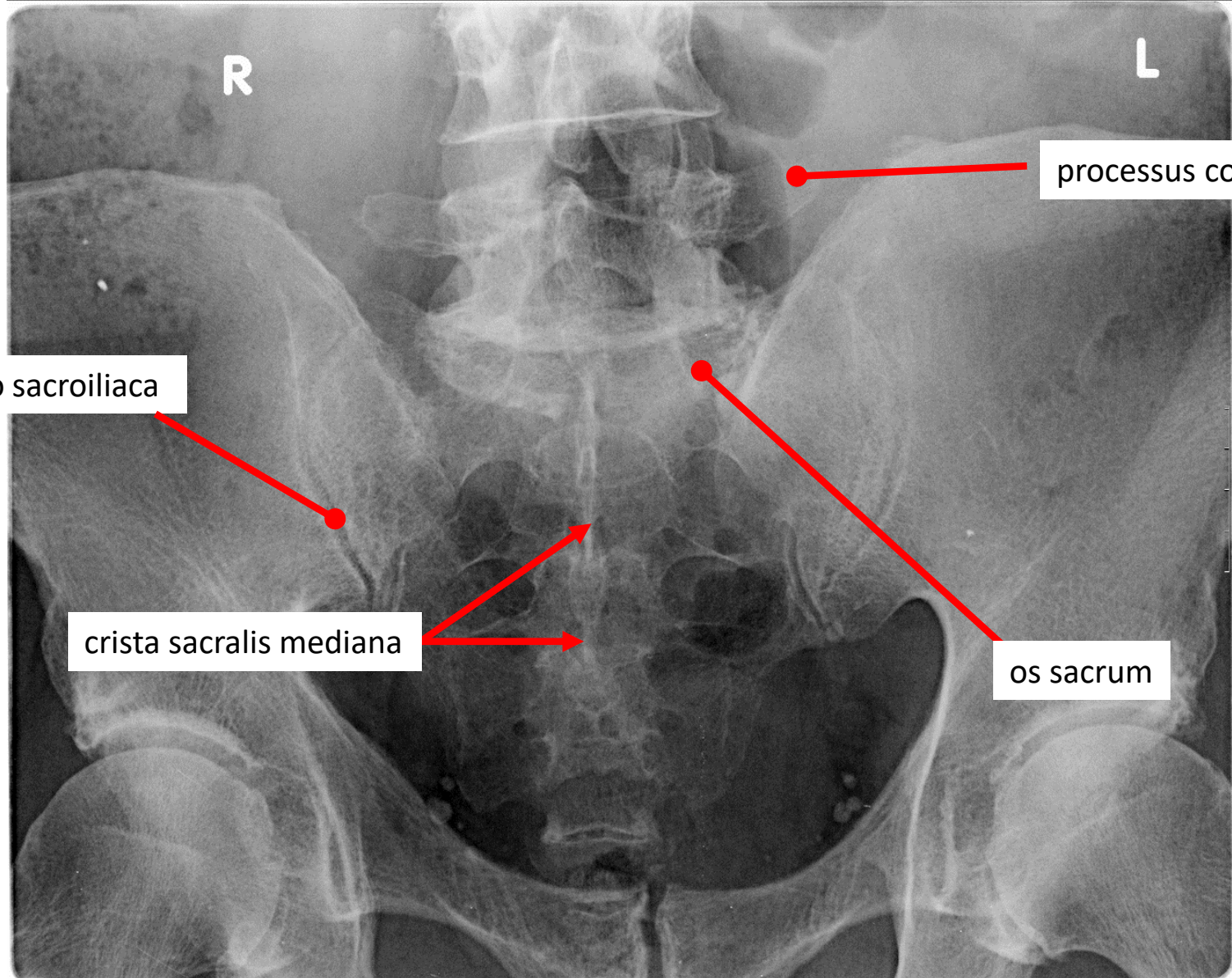
MRI bederní páteře, laterální pohled  
MRI scan of the lumbar part of the vertebral column, lateral view

# Vertebra lumbalis tertia (L3)

MRI bederní páteře, transverzální pohled  
MRI scan of the lumbar part of the vertebral column, transverse view



RTG pánve, frontální pohled  
X-ray picture of the pelvis, frontal view



# Příčný řez v úrovni S1

MRI průřez křížovou kostí, transverzální pohled  
MRI scan, cross-section of the sacrum, transverse view

