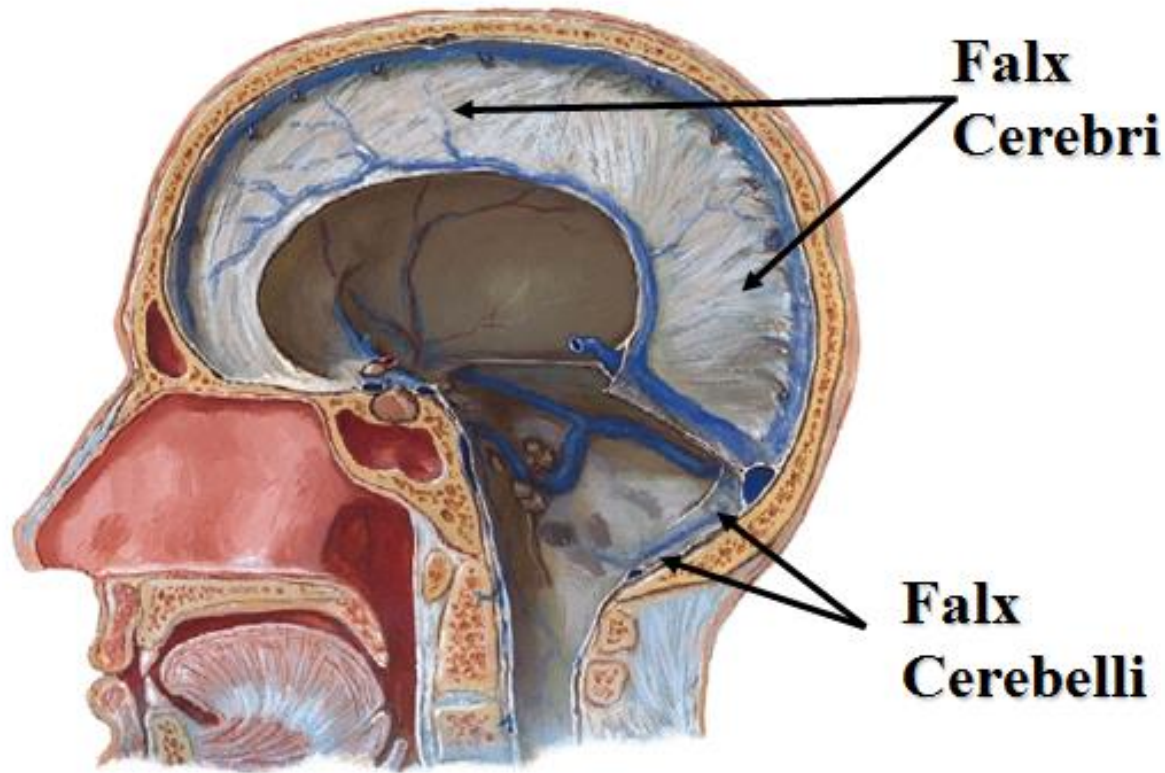
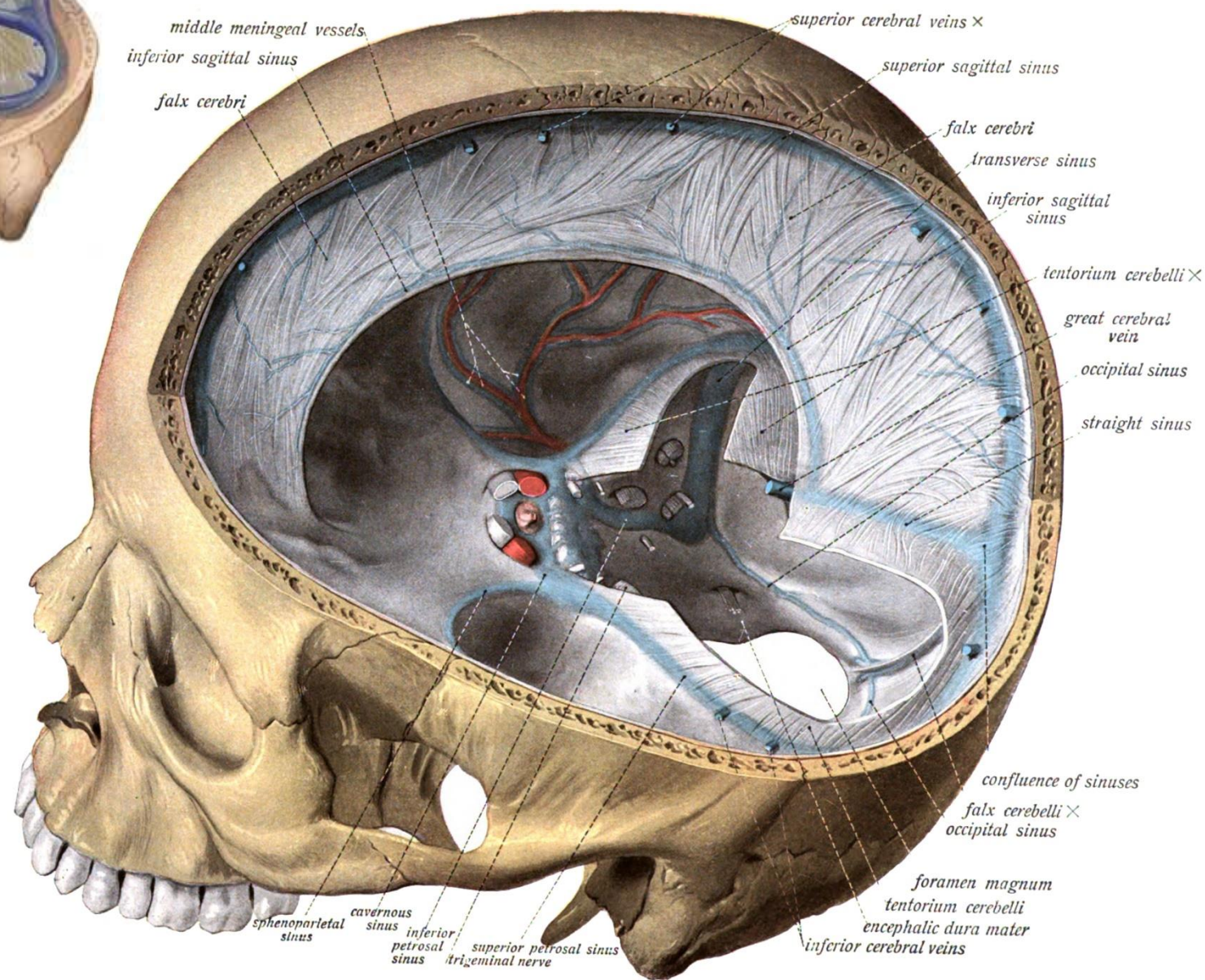
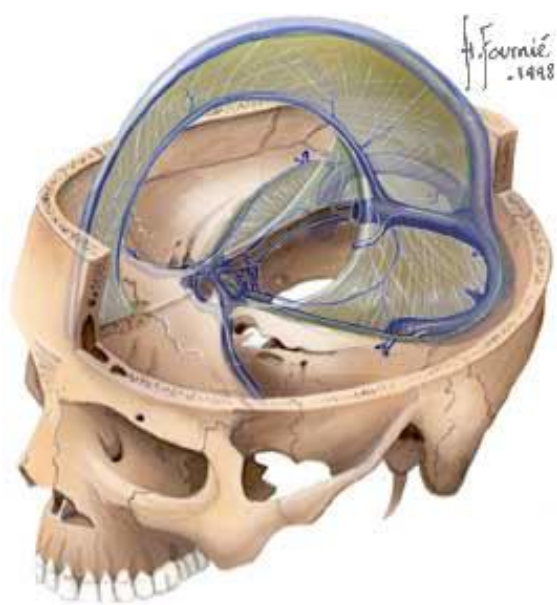


CNS Meninges & Blood Supply



MUDr. Azzat Al-Redouan

Fournié
-1998



middle meningeal vessels
inferior sagittal sinus
falx cerebri

superior cerebral veins ×
superior sagittal sinus

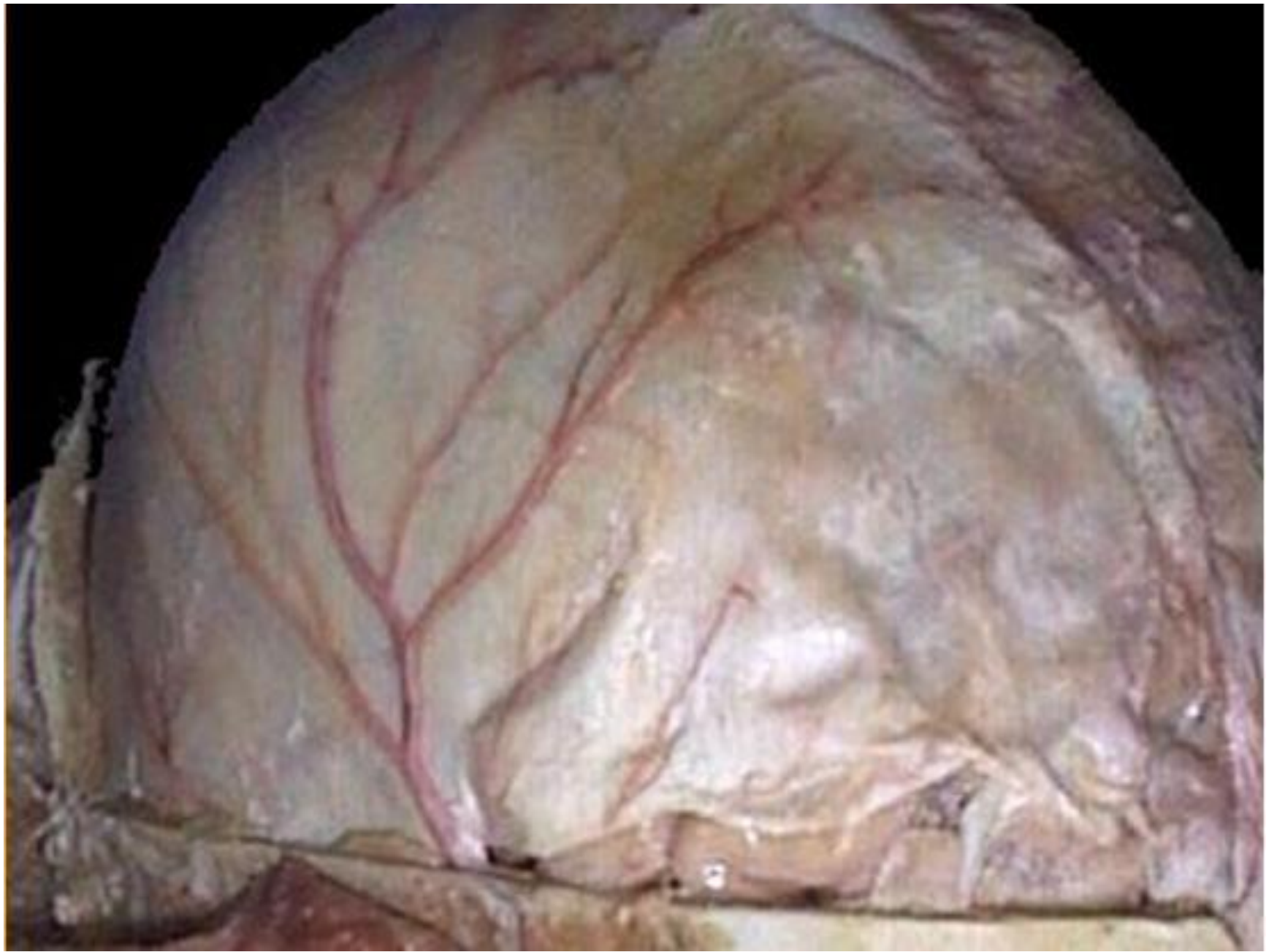
falx cerebri
transverse sinus
inferior sagittal sinus

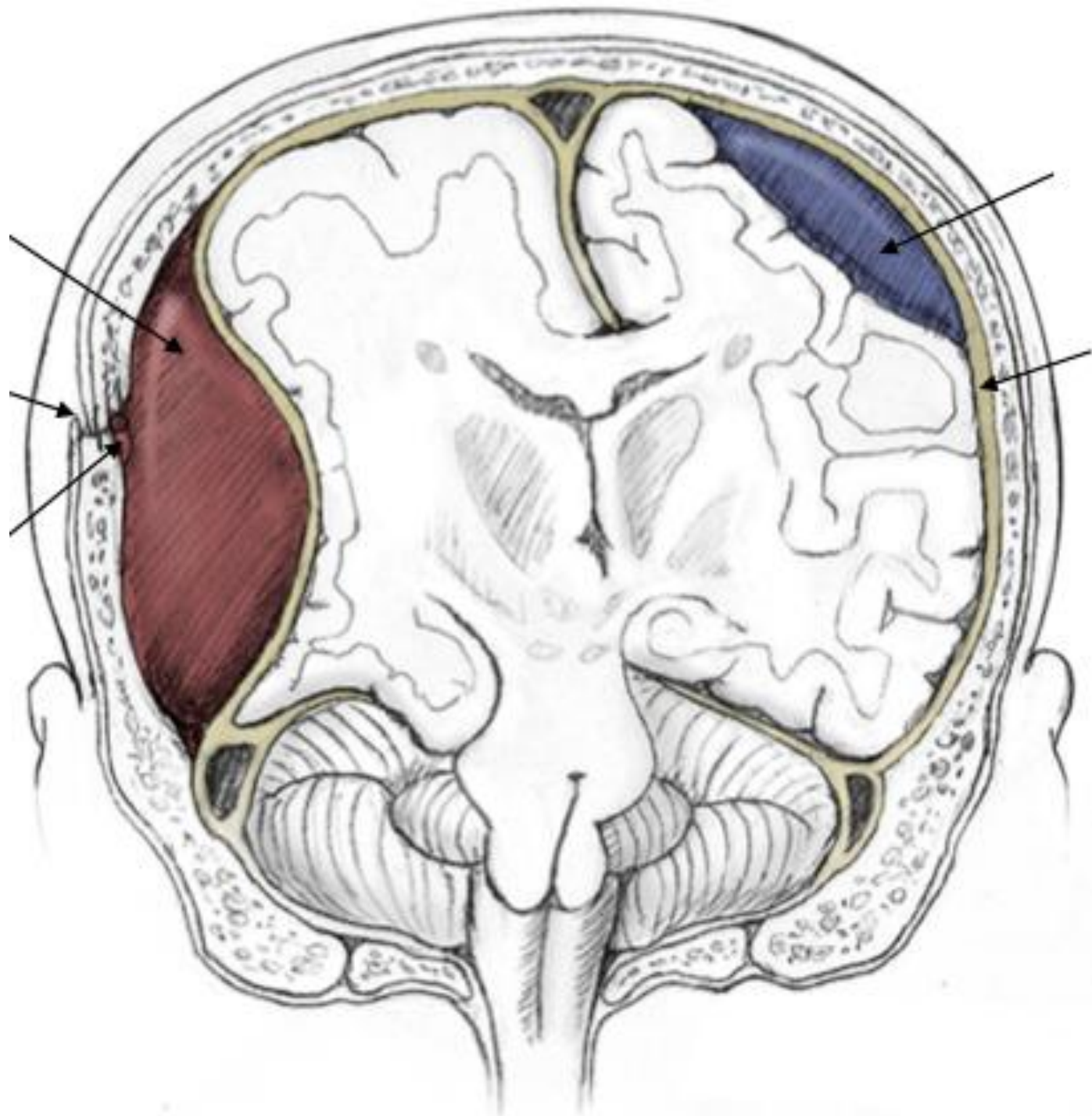
tentorium cerebelli ×
great cerebral vein
occipital sinus
straight sinus

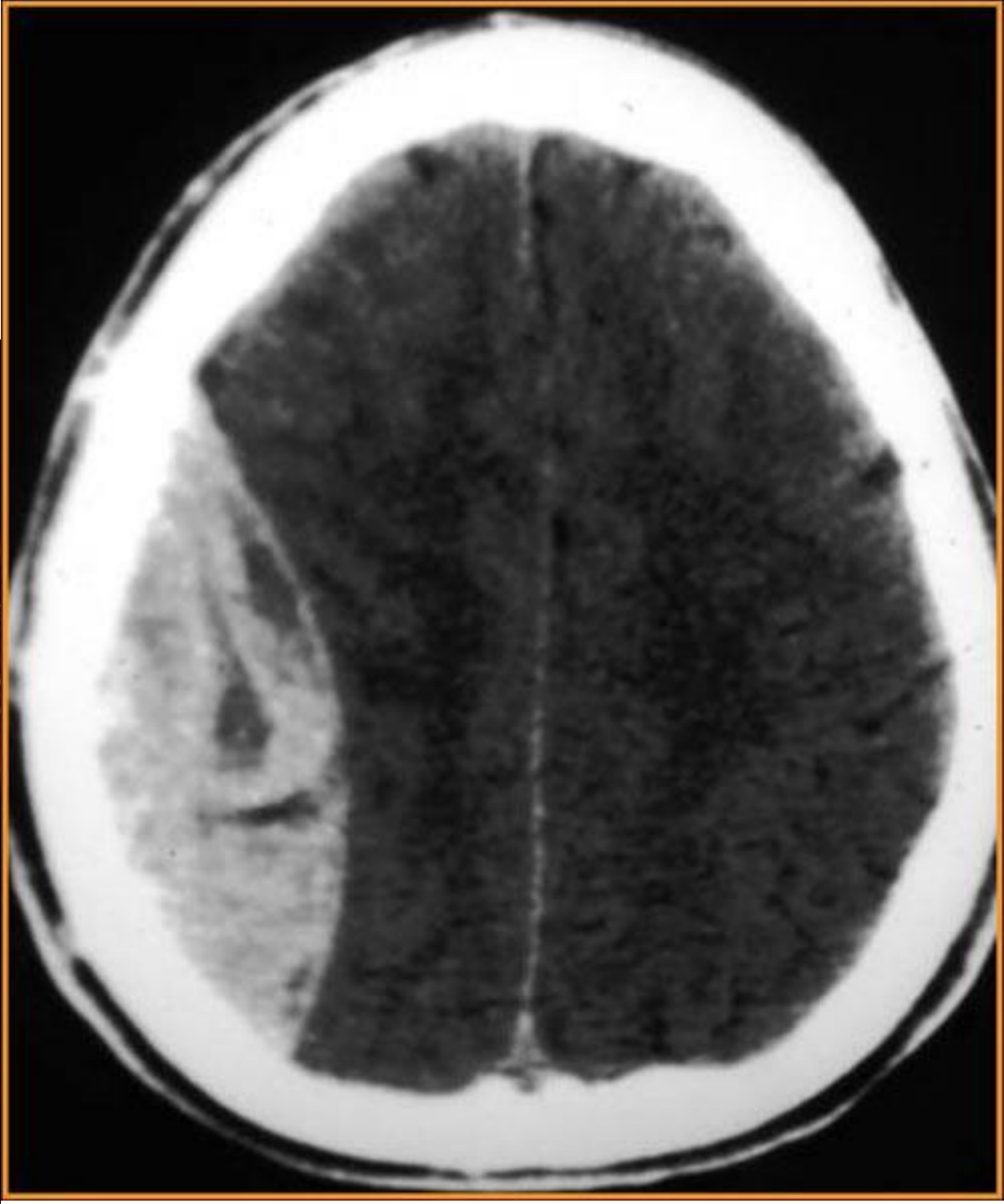
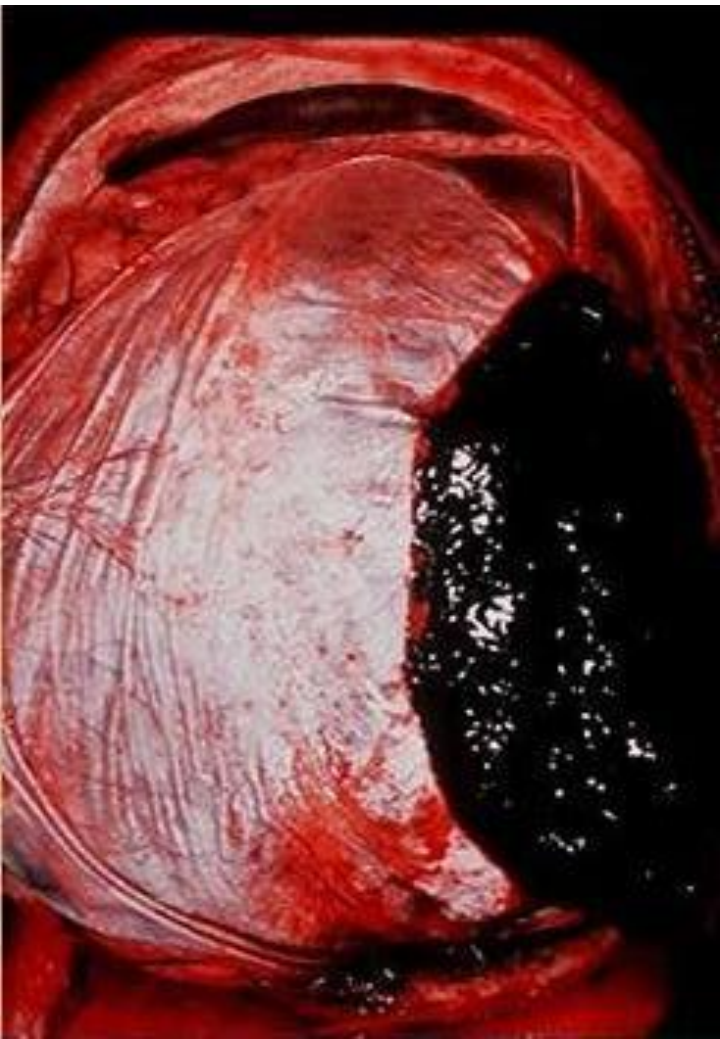
confluence of sinuses
falx cerebelli ×
occipital sinus

foramen magnum
tentorium cerebelli
encephalic dura mater
inferior cerebral veins

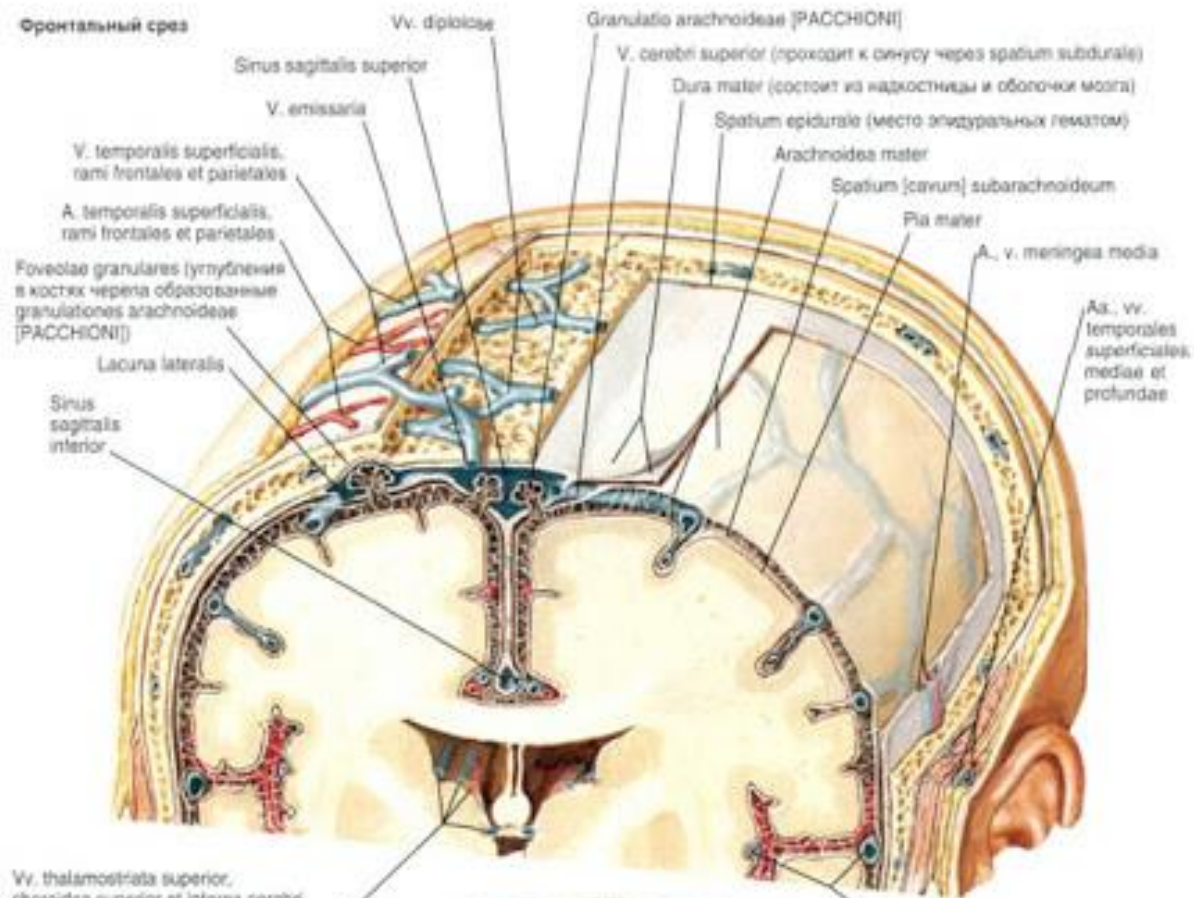
sphenoparietal sinus
cavernous sinus
inferior petrosal sinus
trigeminal nerve
superior petrosal sinus



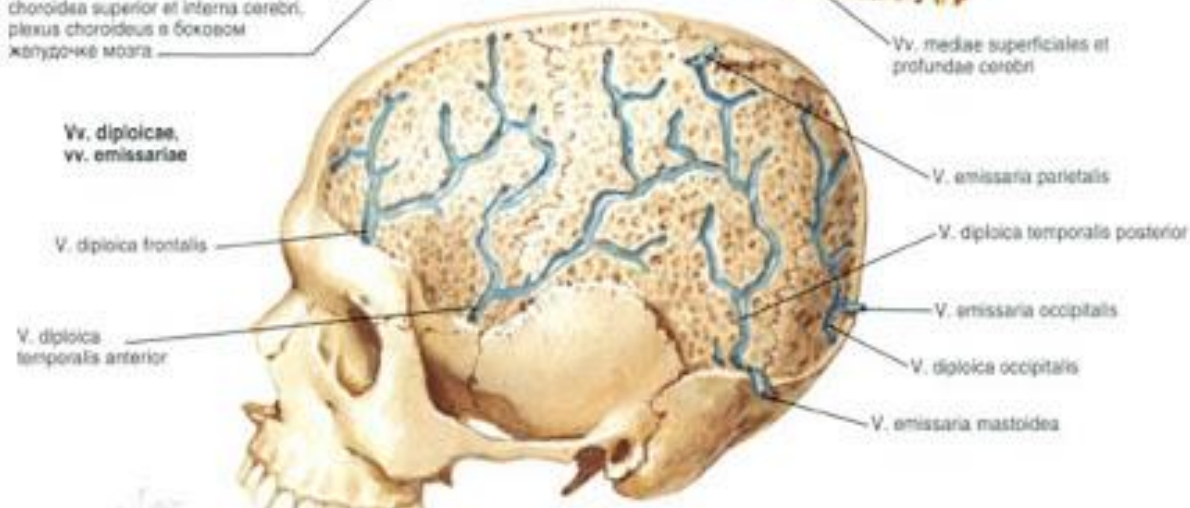


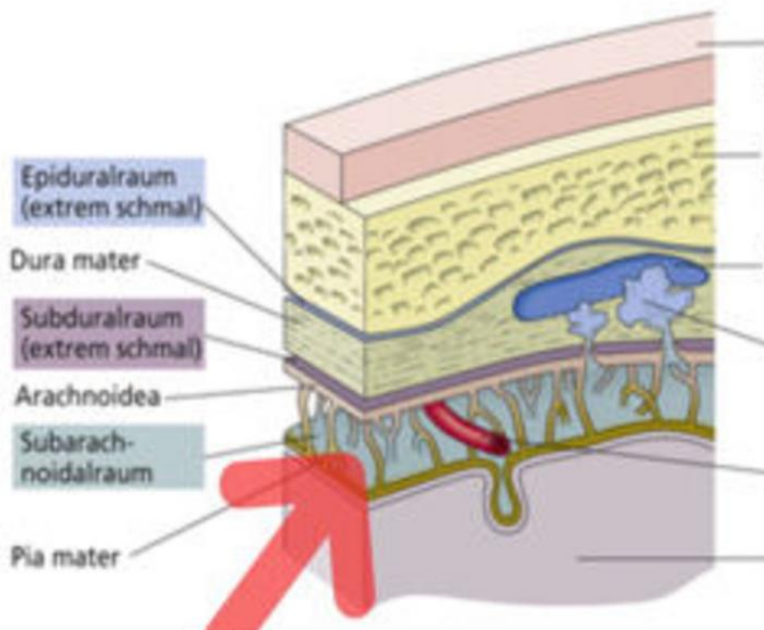


Фронтальный срез

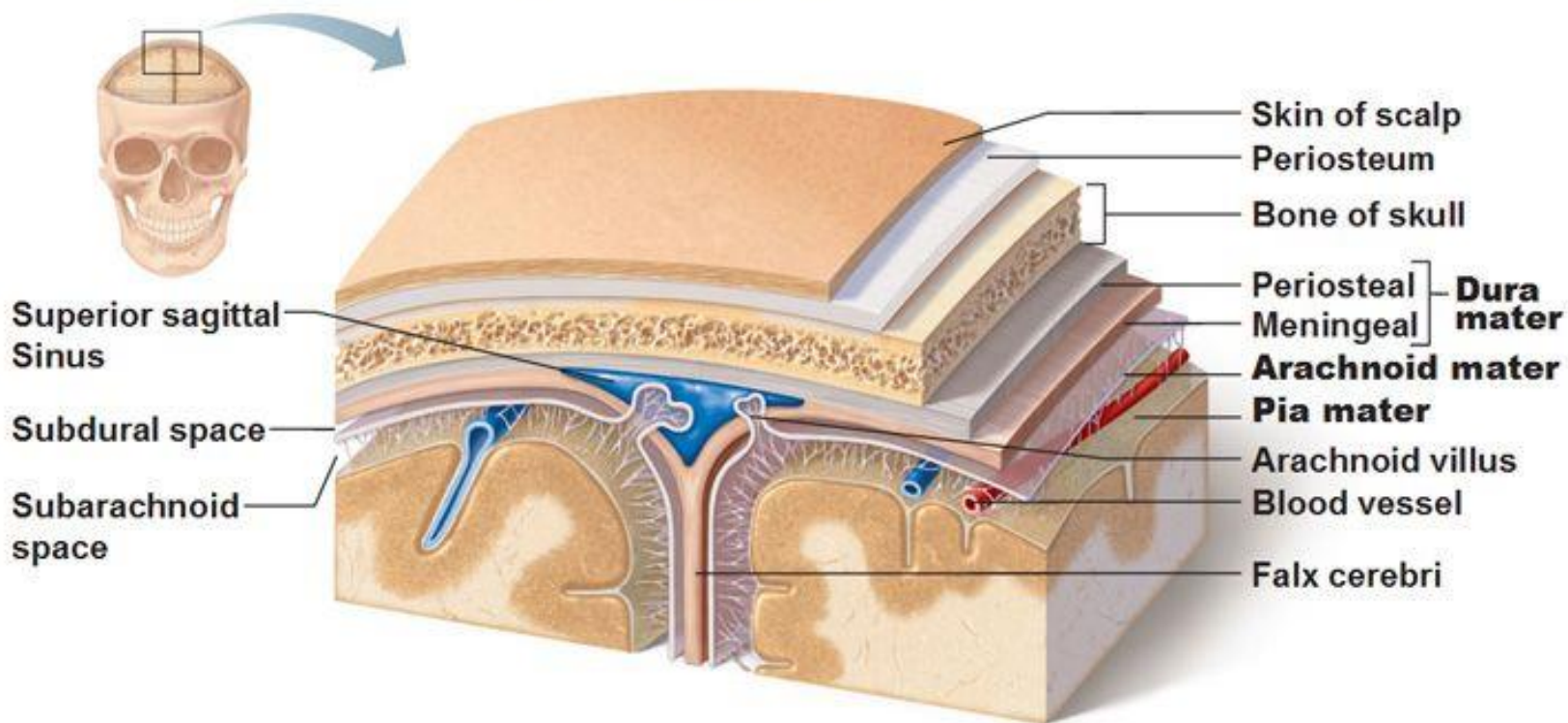


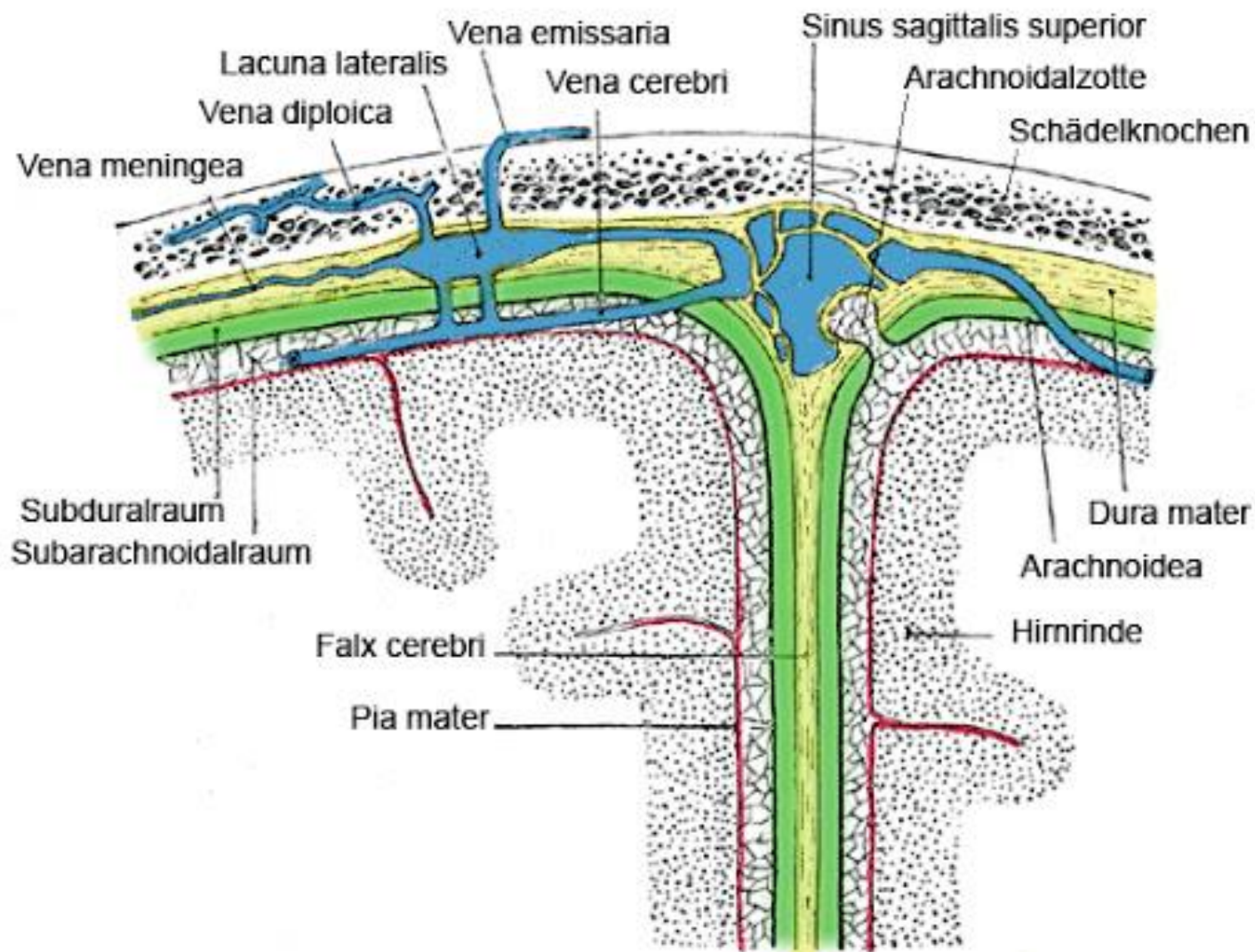
Vv. thalamostriata superior, choroidea superior et interna cerebri, plexus choroideus в боковом желудочке мозга

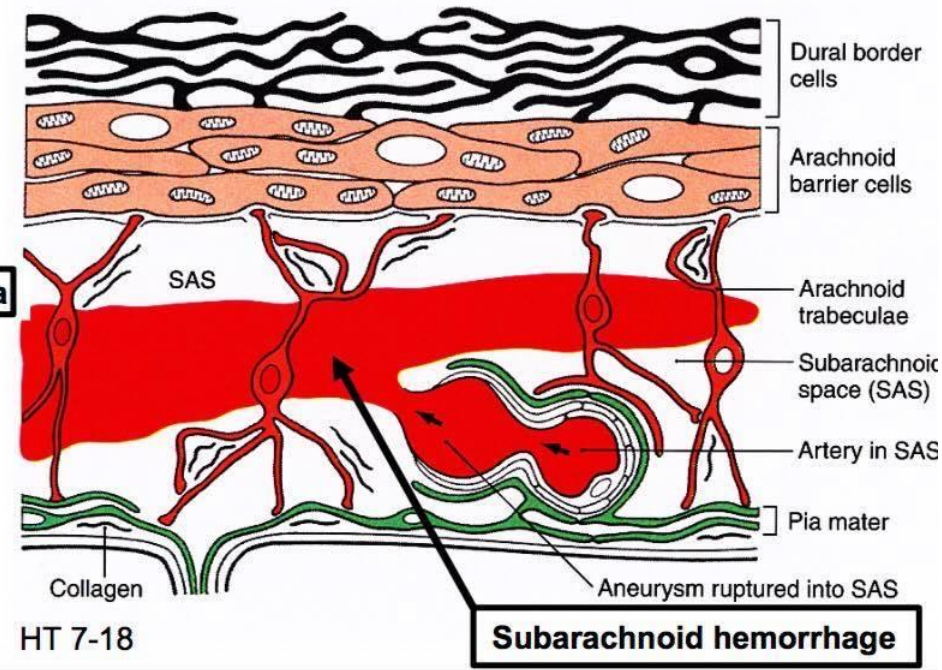
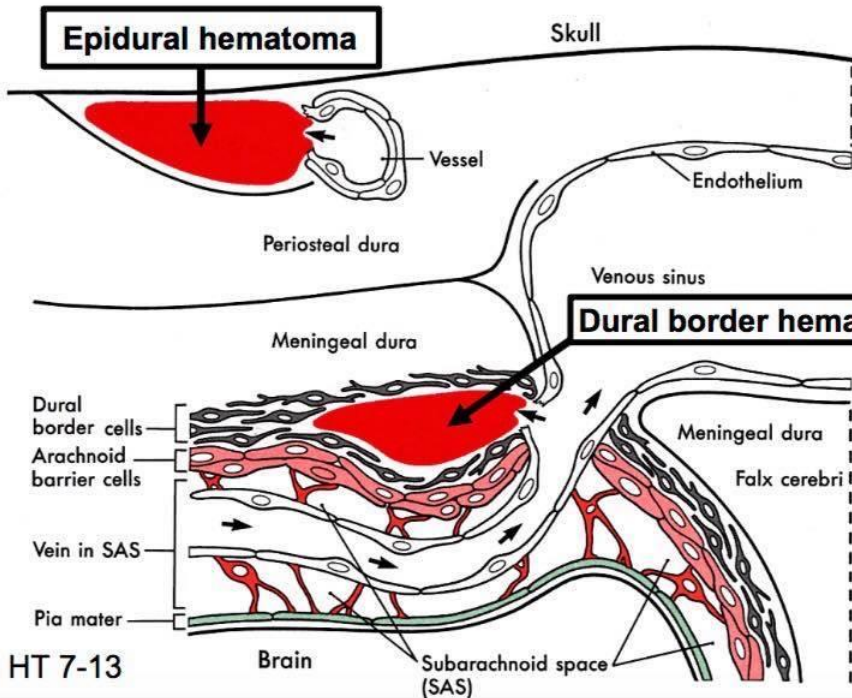
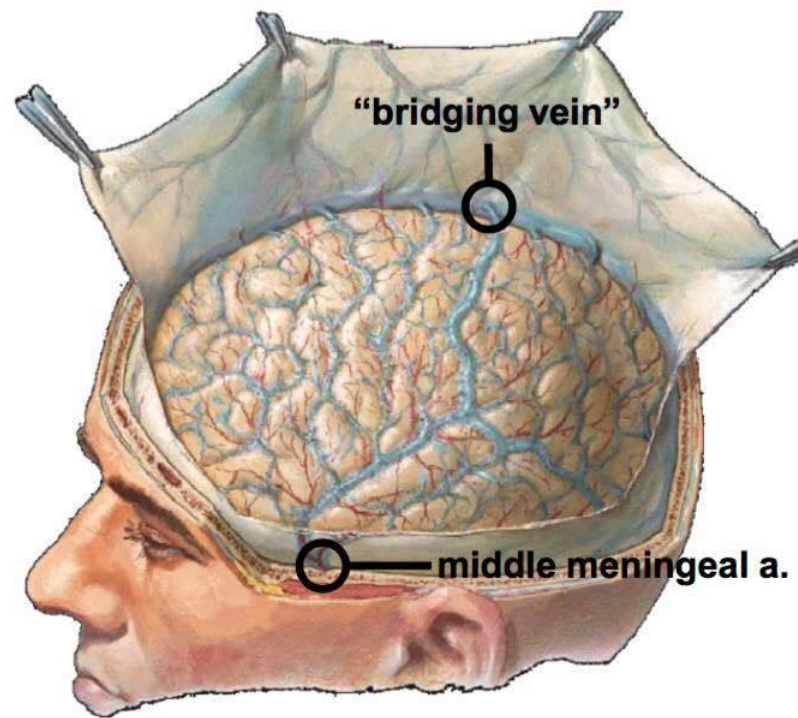
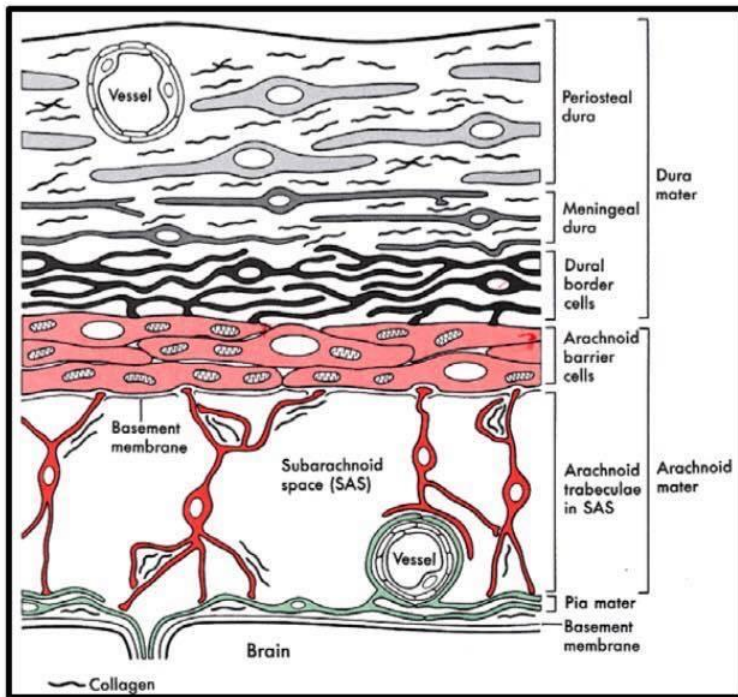


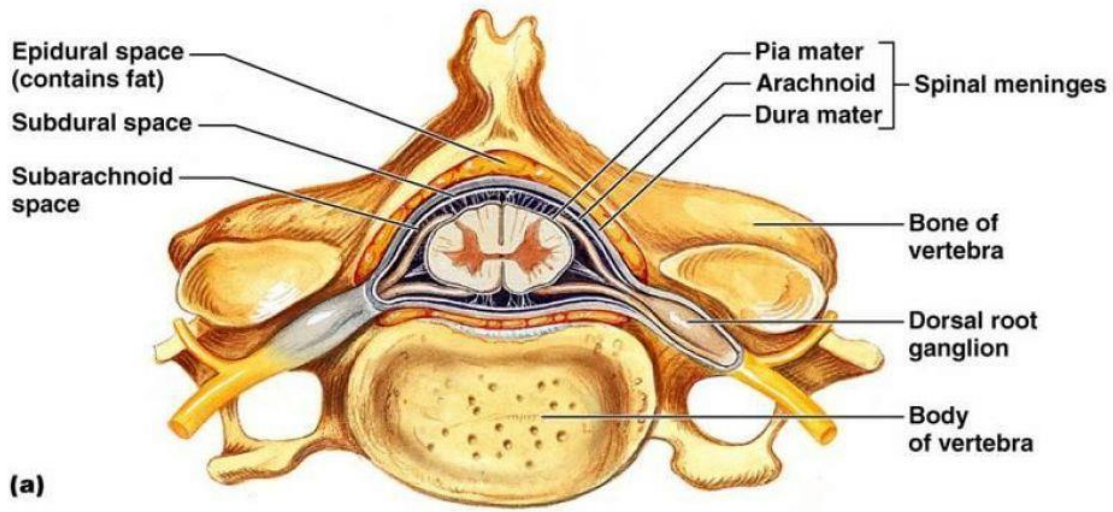


The Dura Mater

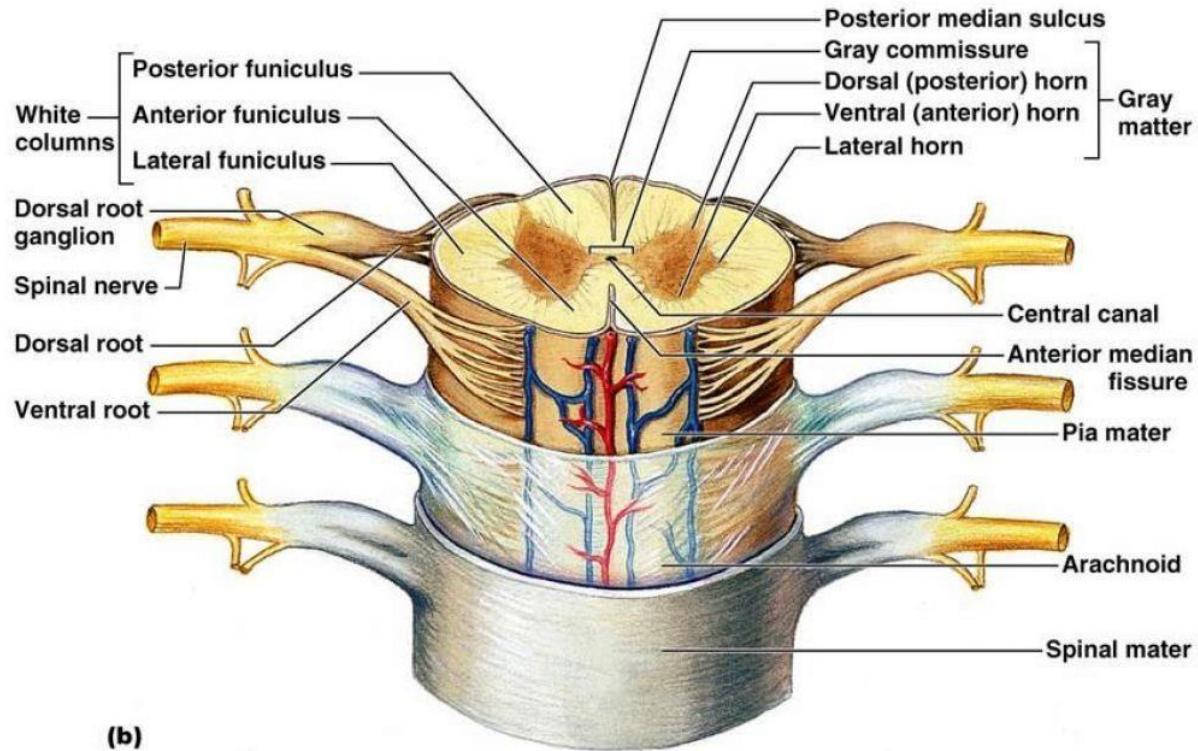






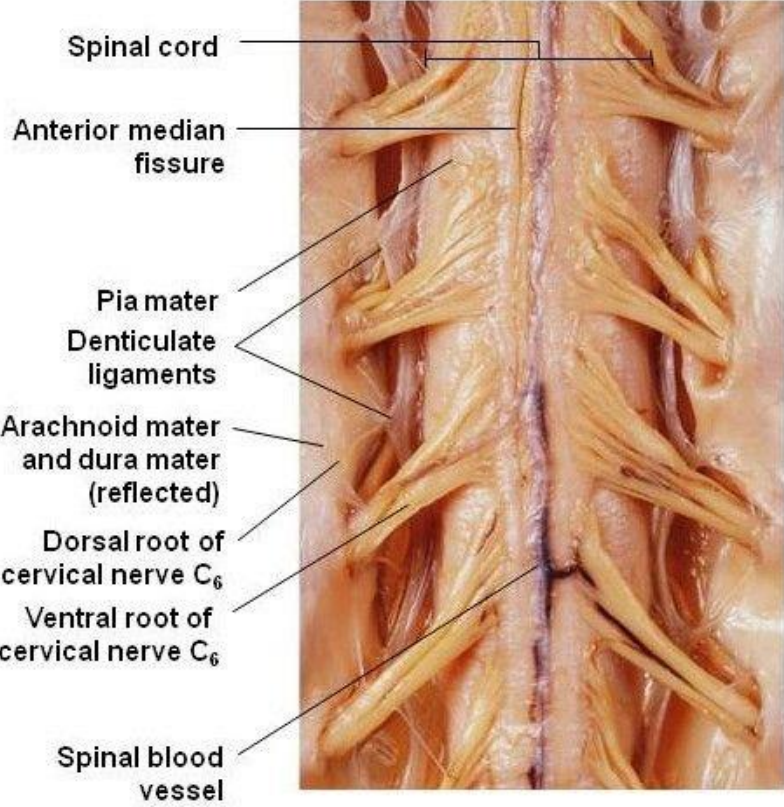


(a)

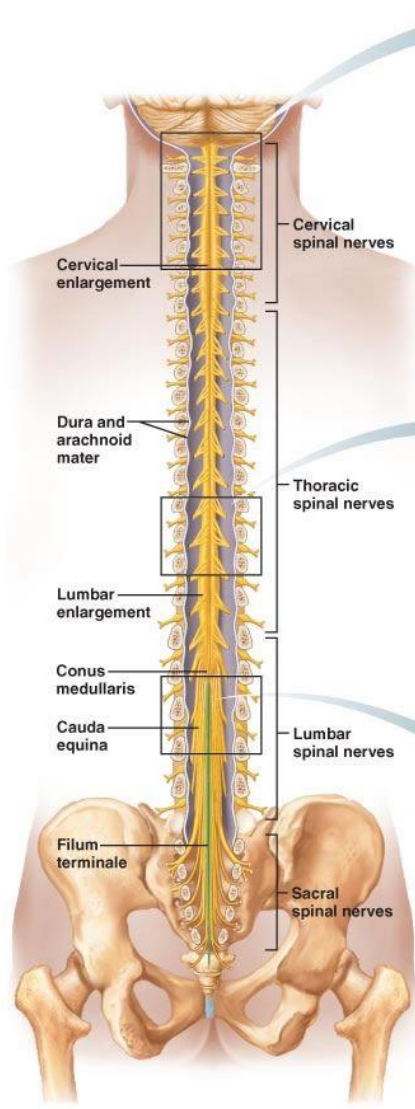


(b)

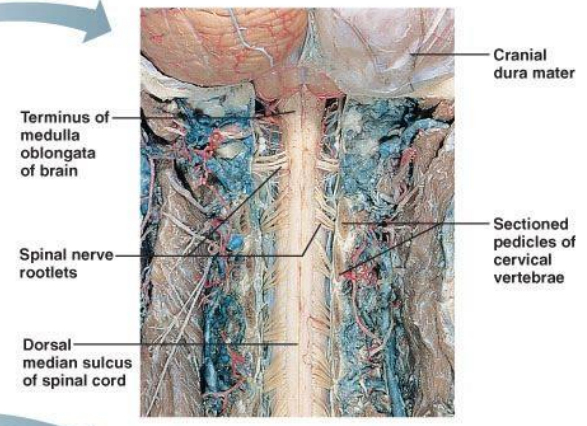
Figure 13-4: The Spinal Cord and Associated Structures



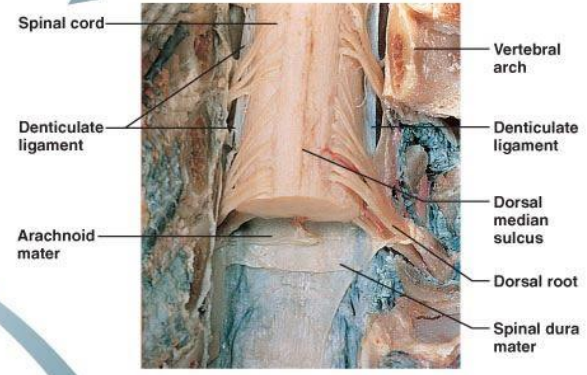
Anterior view



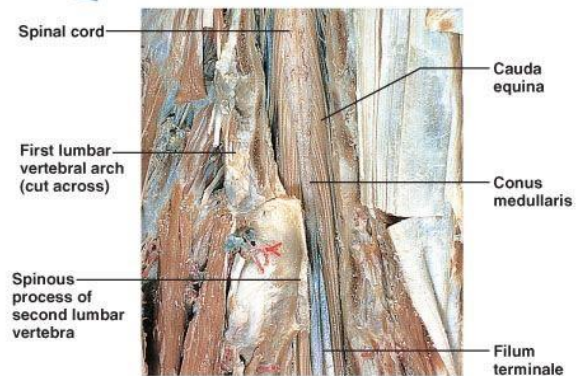
(a) The spinal cord and its nerve roots, with the bony vertebral arches removed. The dura mater and arachnoid mater are cut open and reflected laterally.



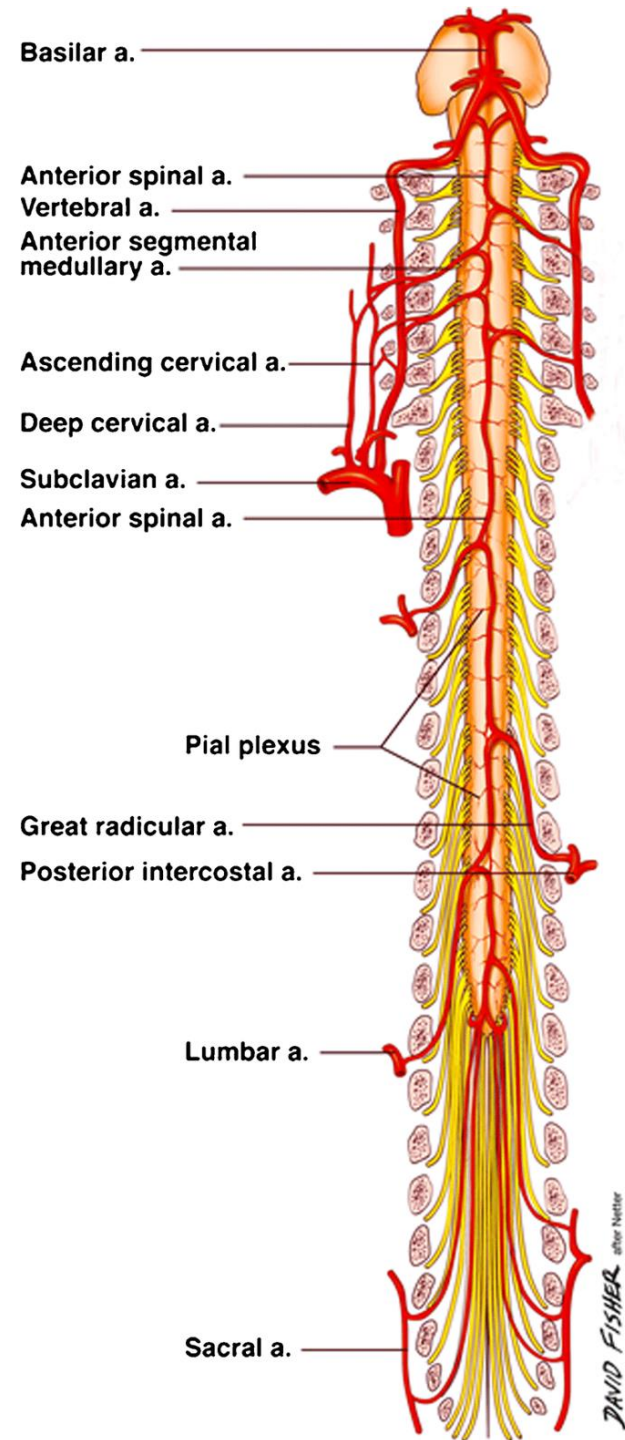
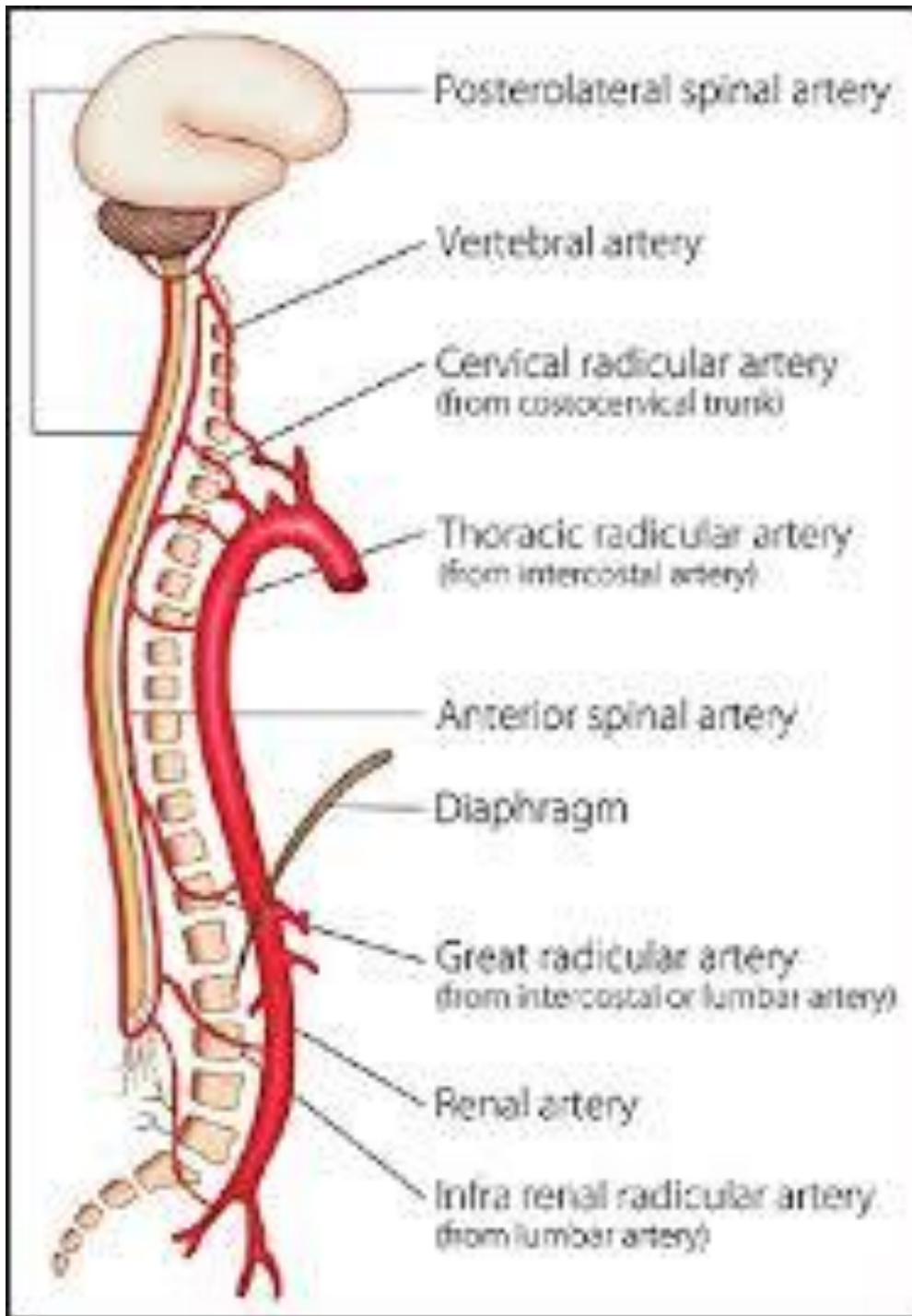
(b) Cervical spinal cord.

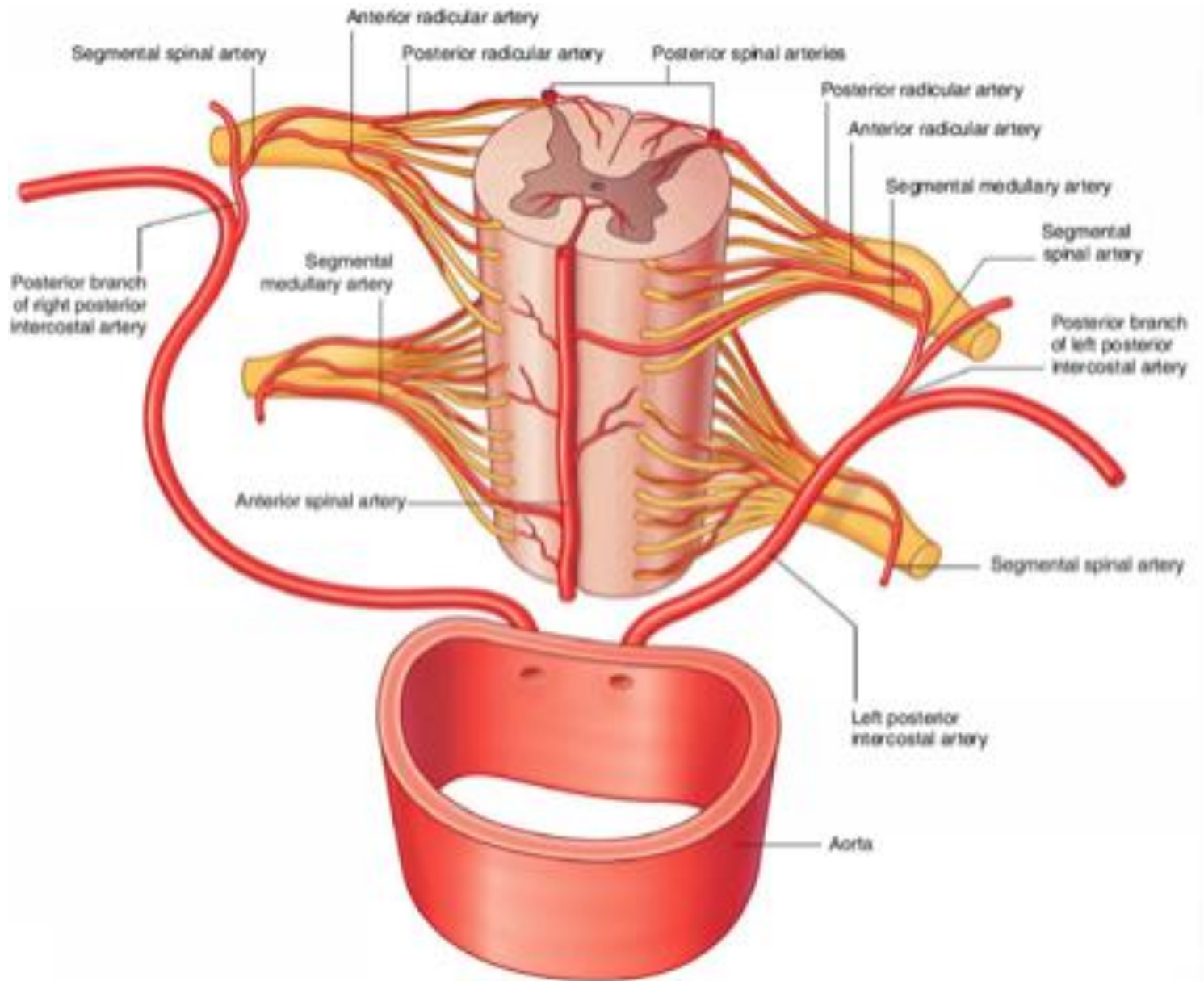


(c) Thoracic spinal cord, showing denticulate ligaments.



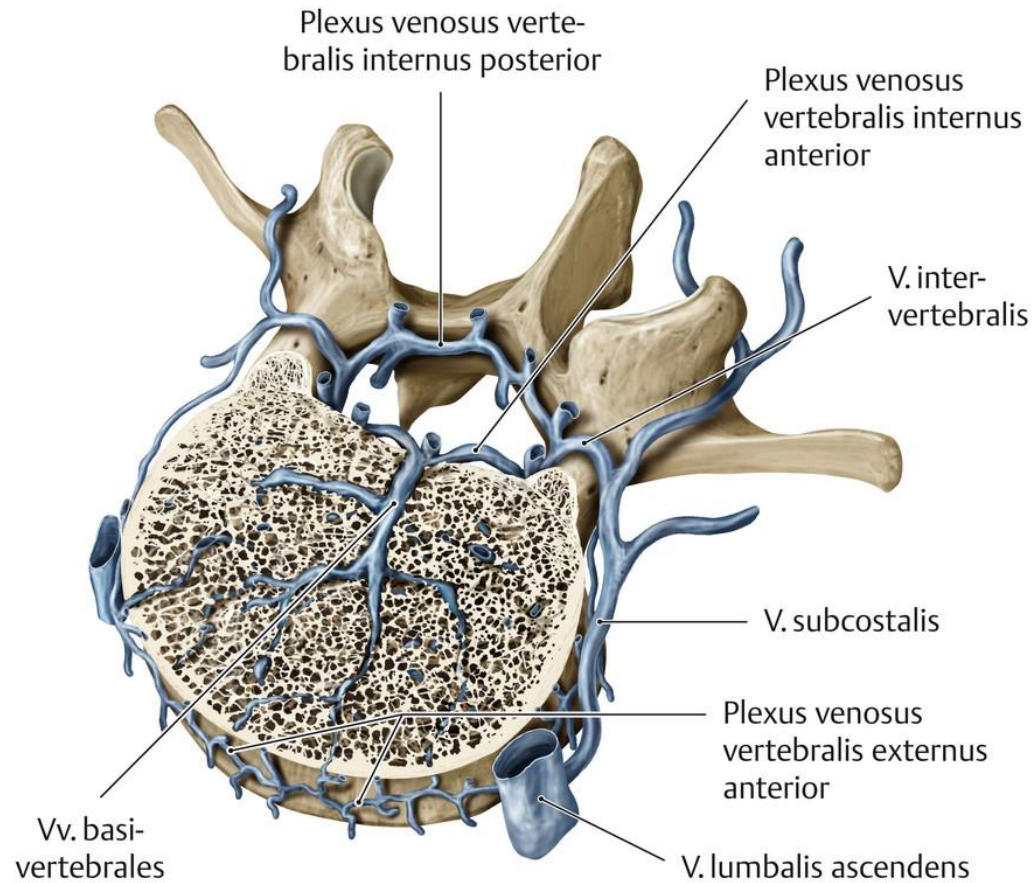
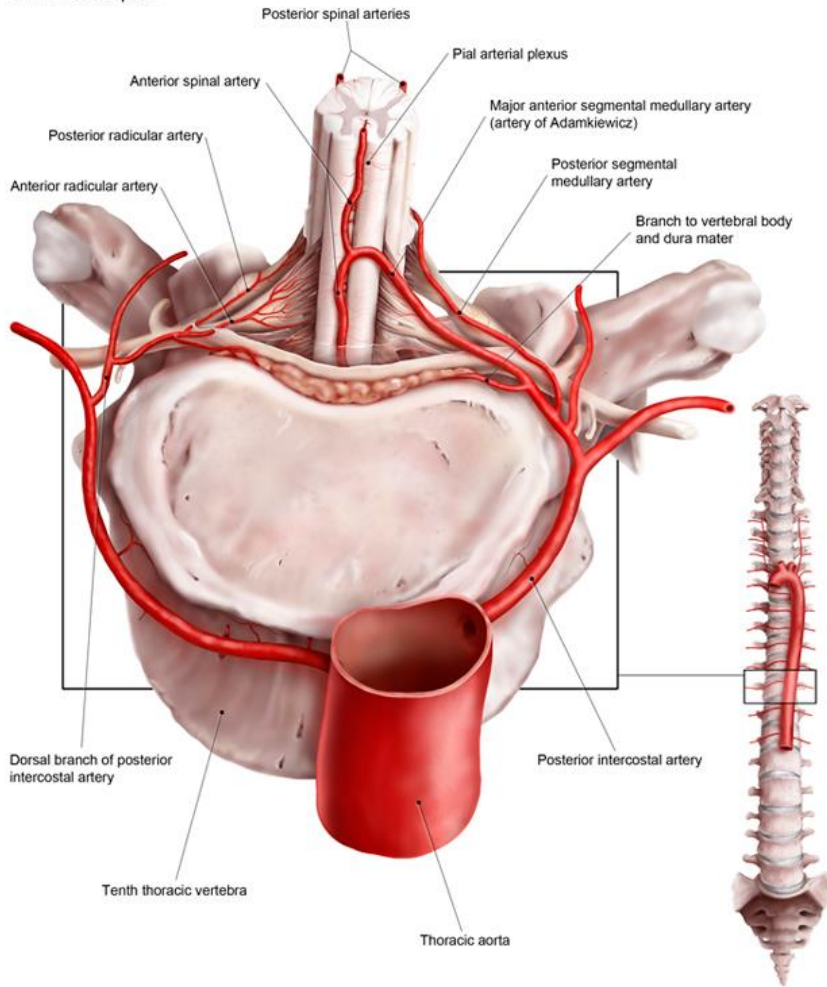
(d) Inferior end of spinal cord, showing conus medullaris, cauda equina, and filum terminale.

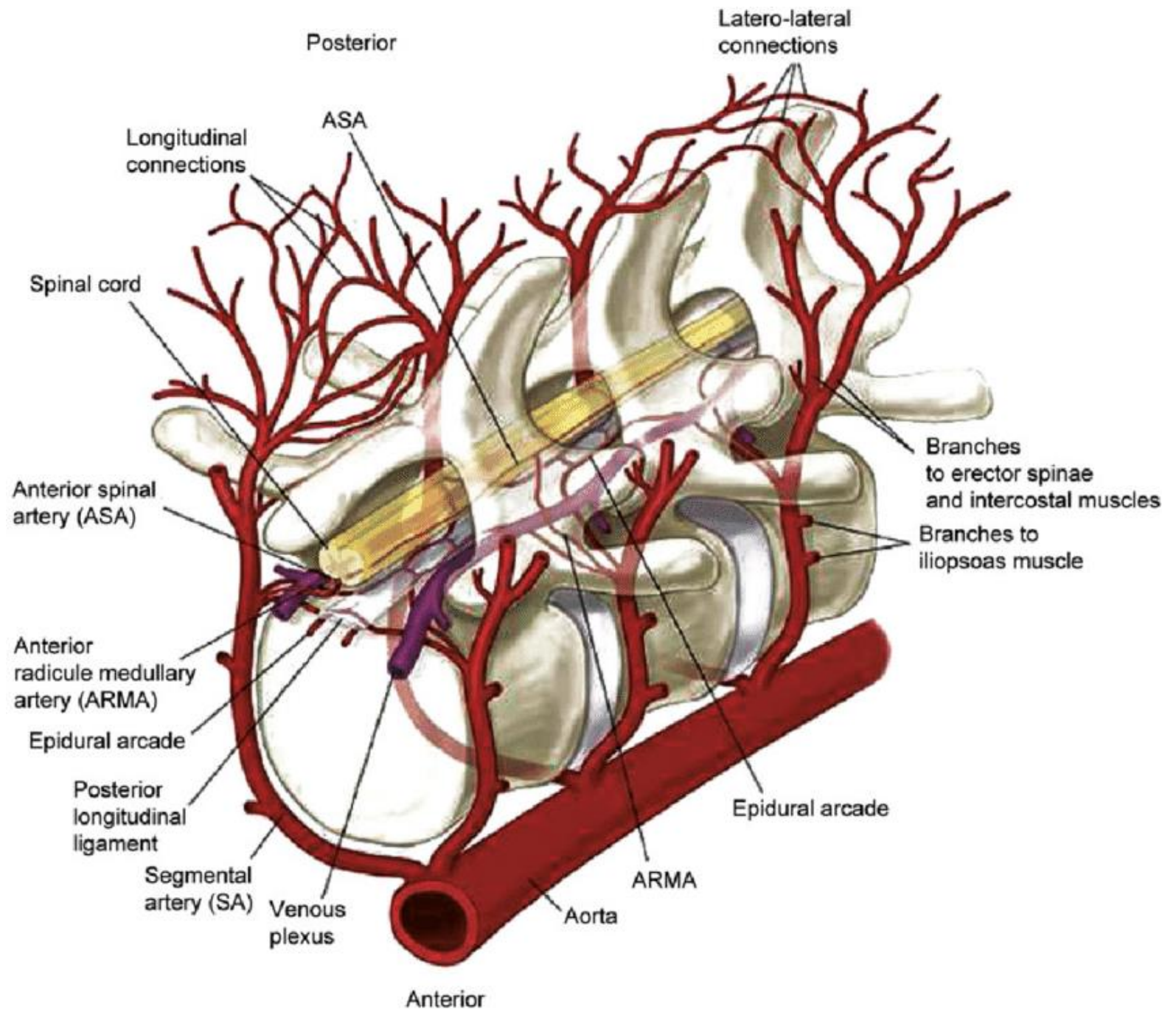


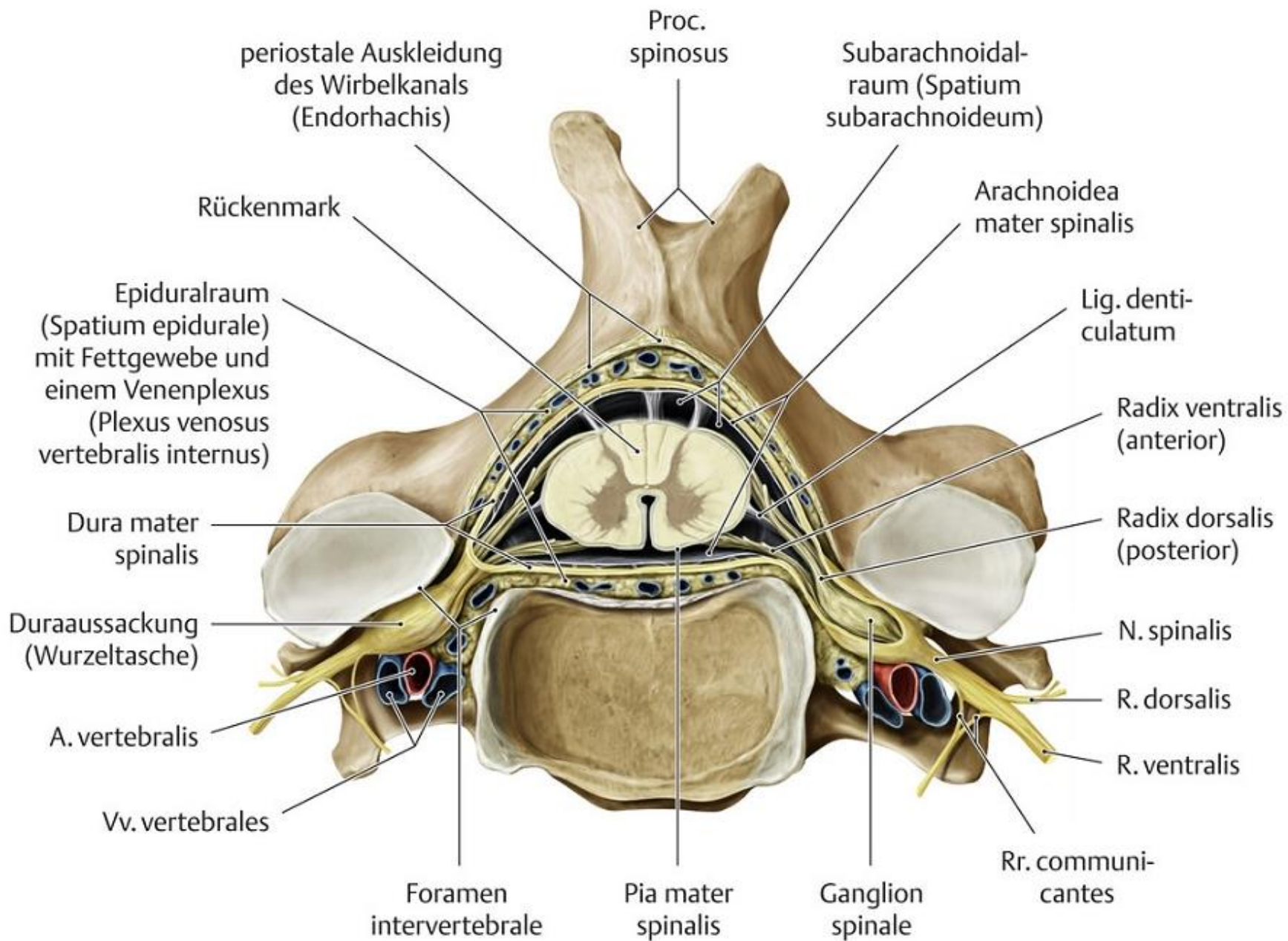


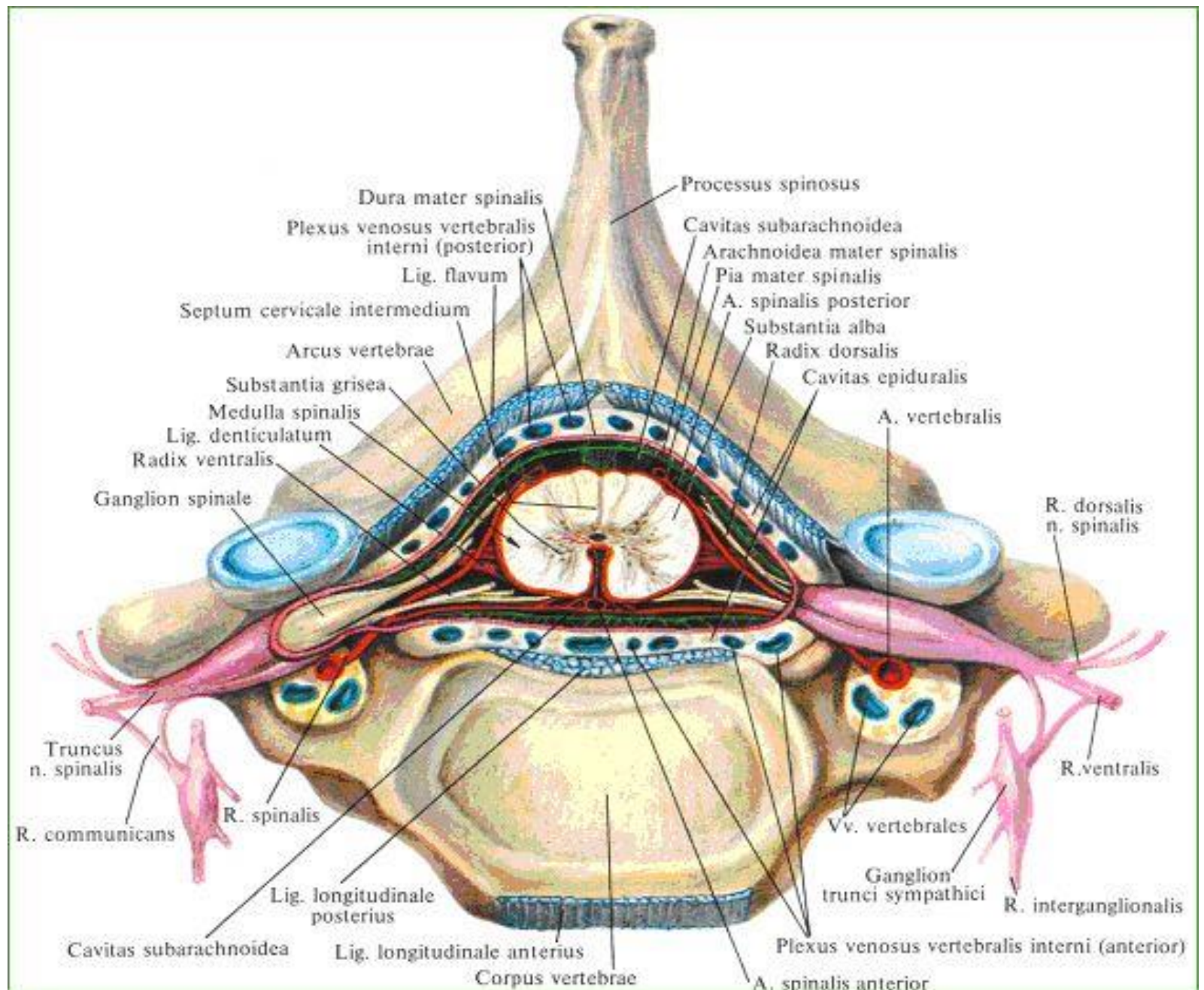
ARTERIAL SUPPLY OF THE LOWER SPINAL CORD

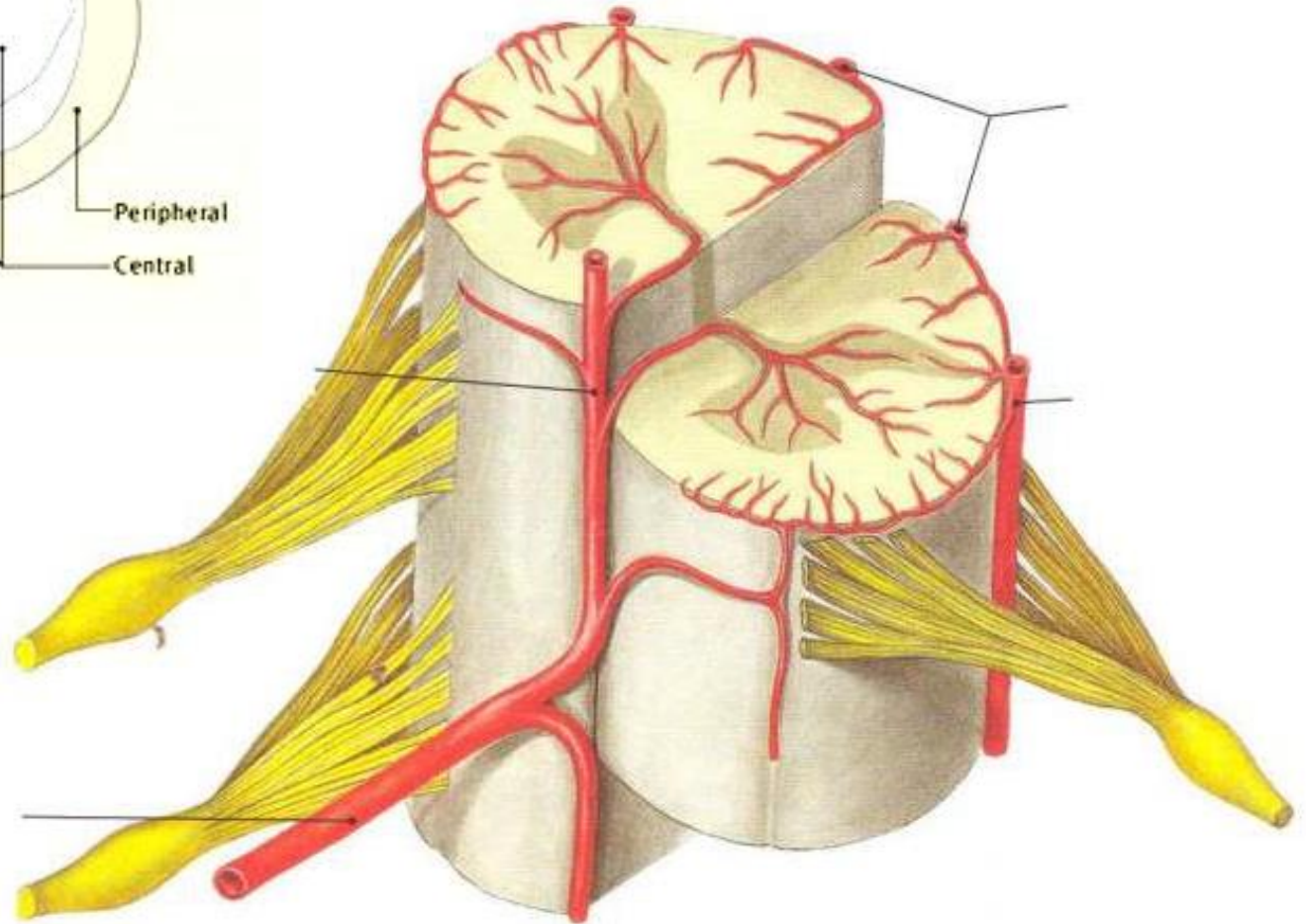
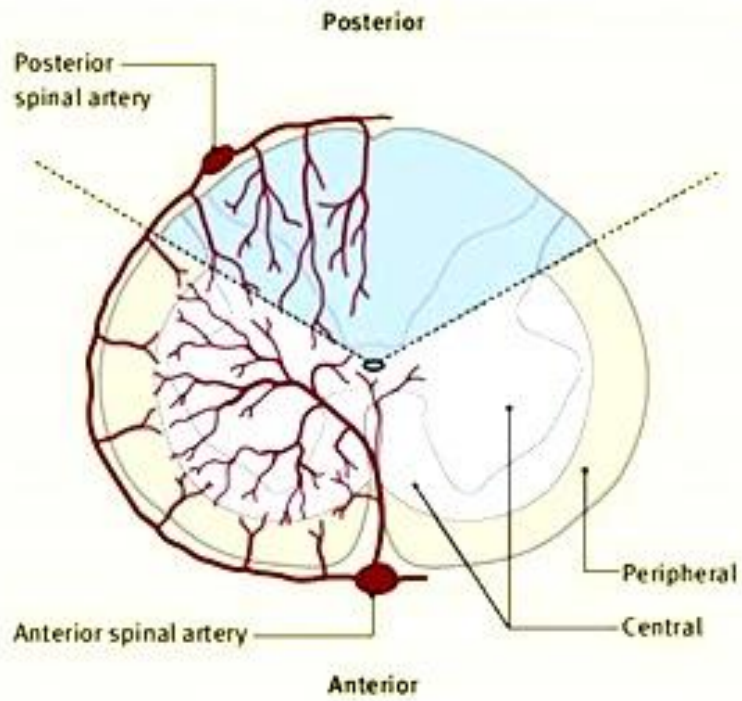
© 2014 J.Campbell



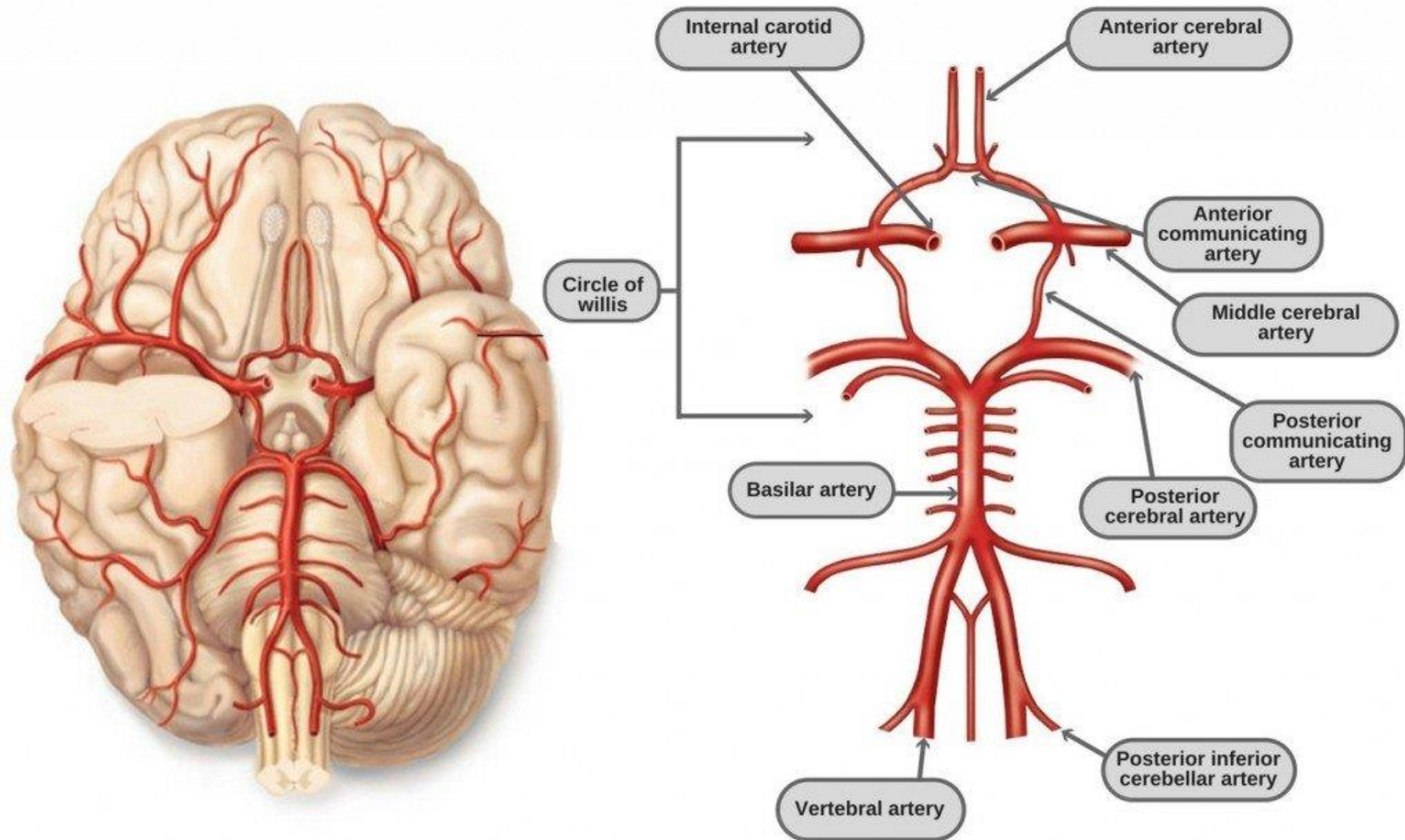


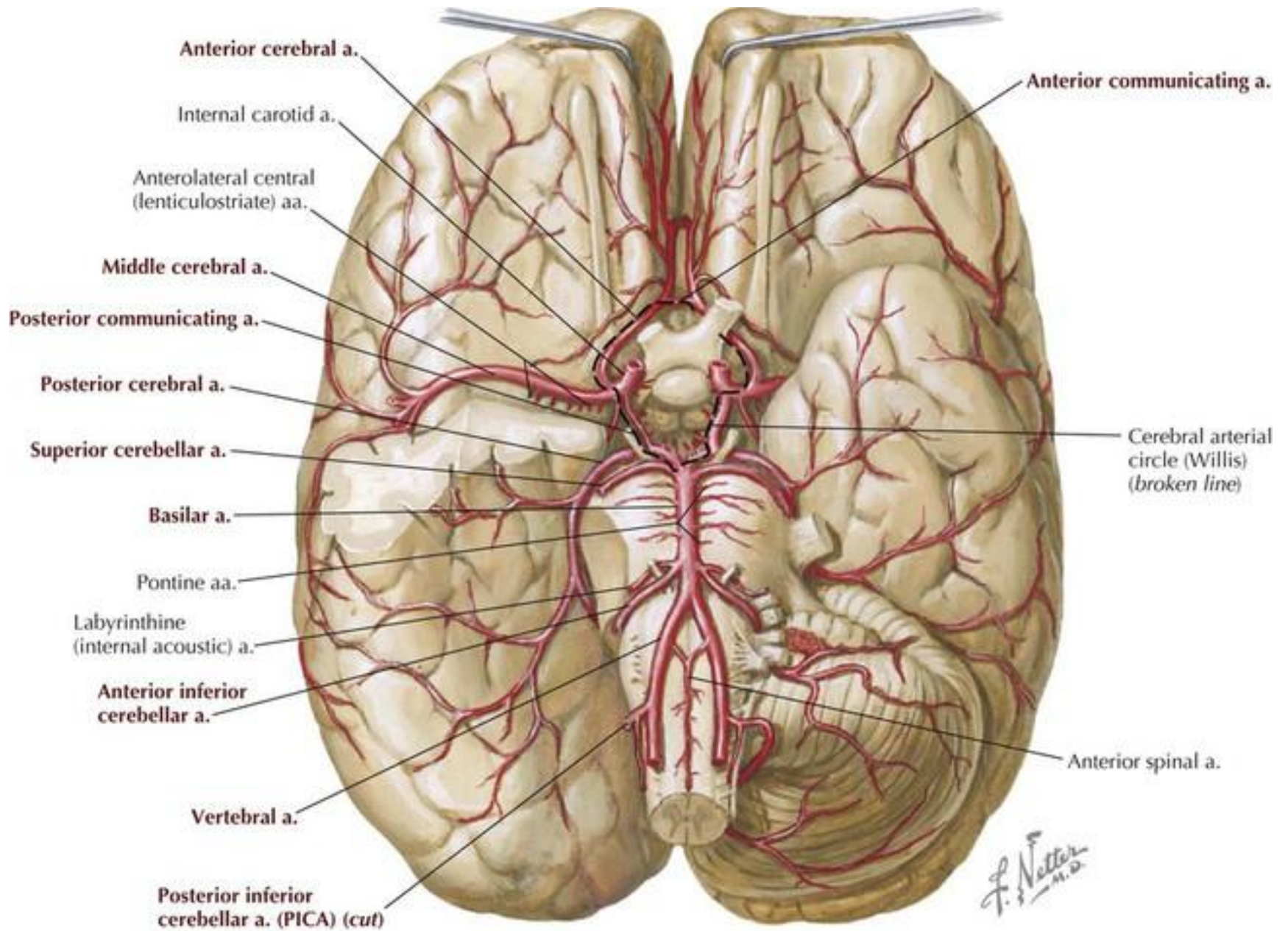






Willis circle of Willis





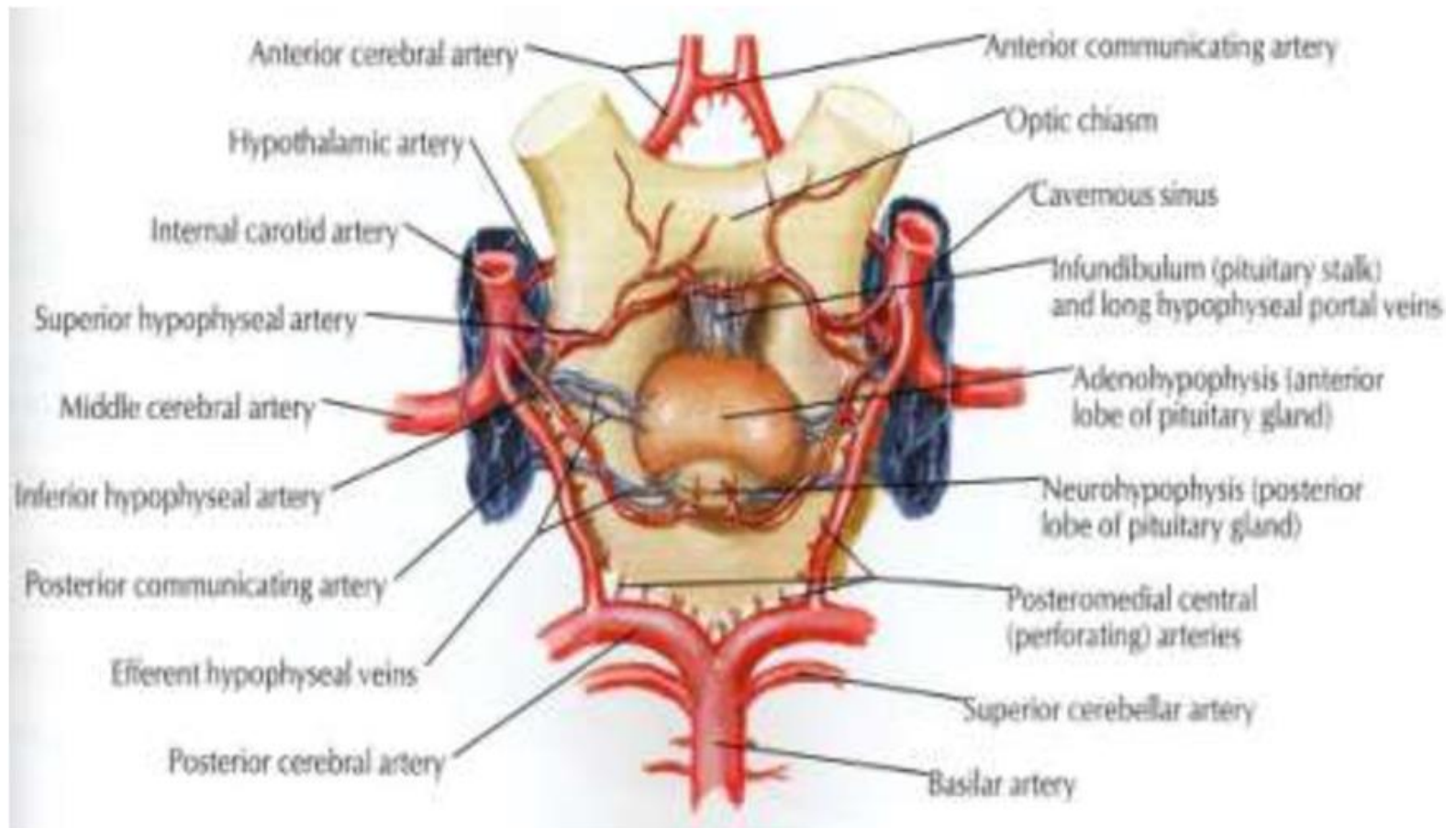
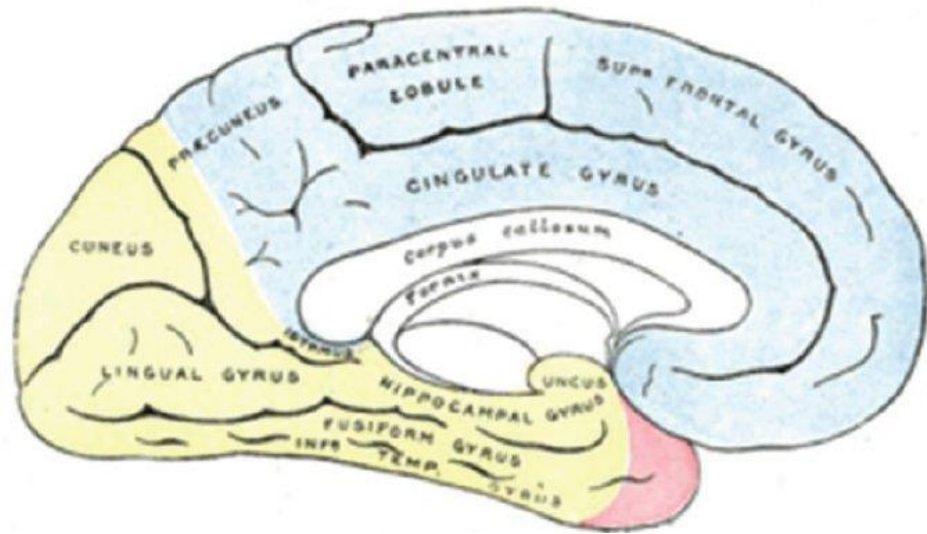
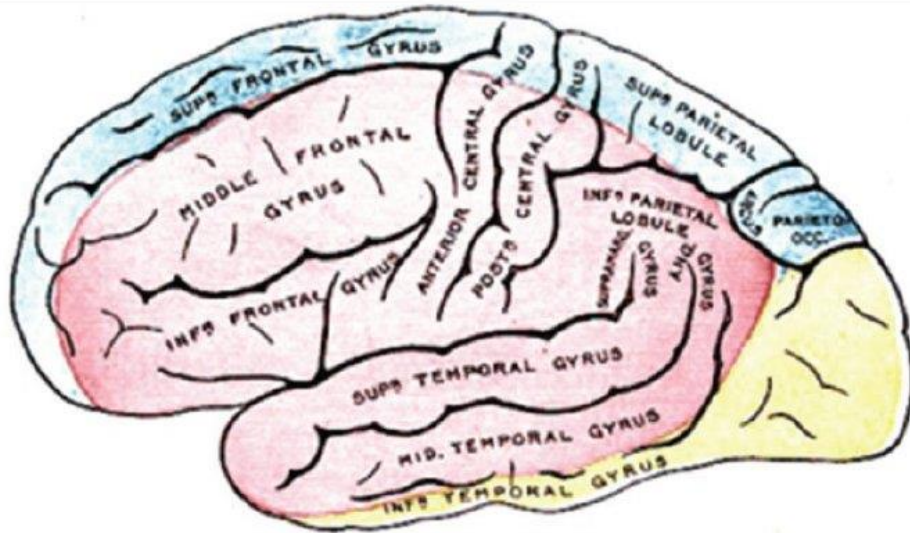
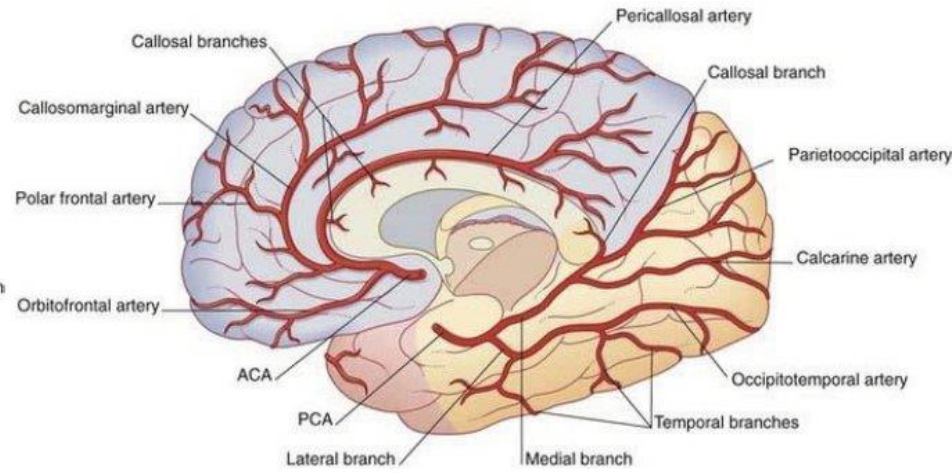
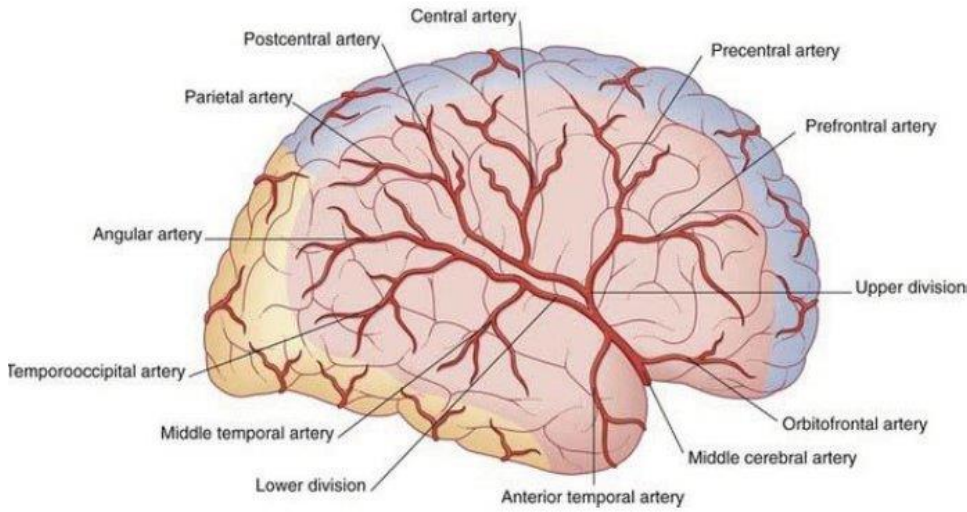
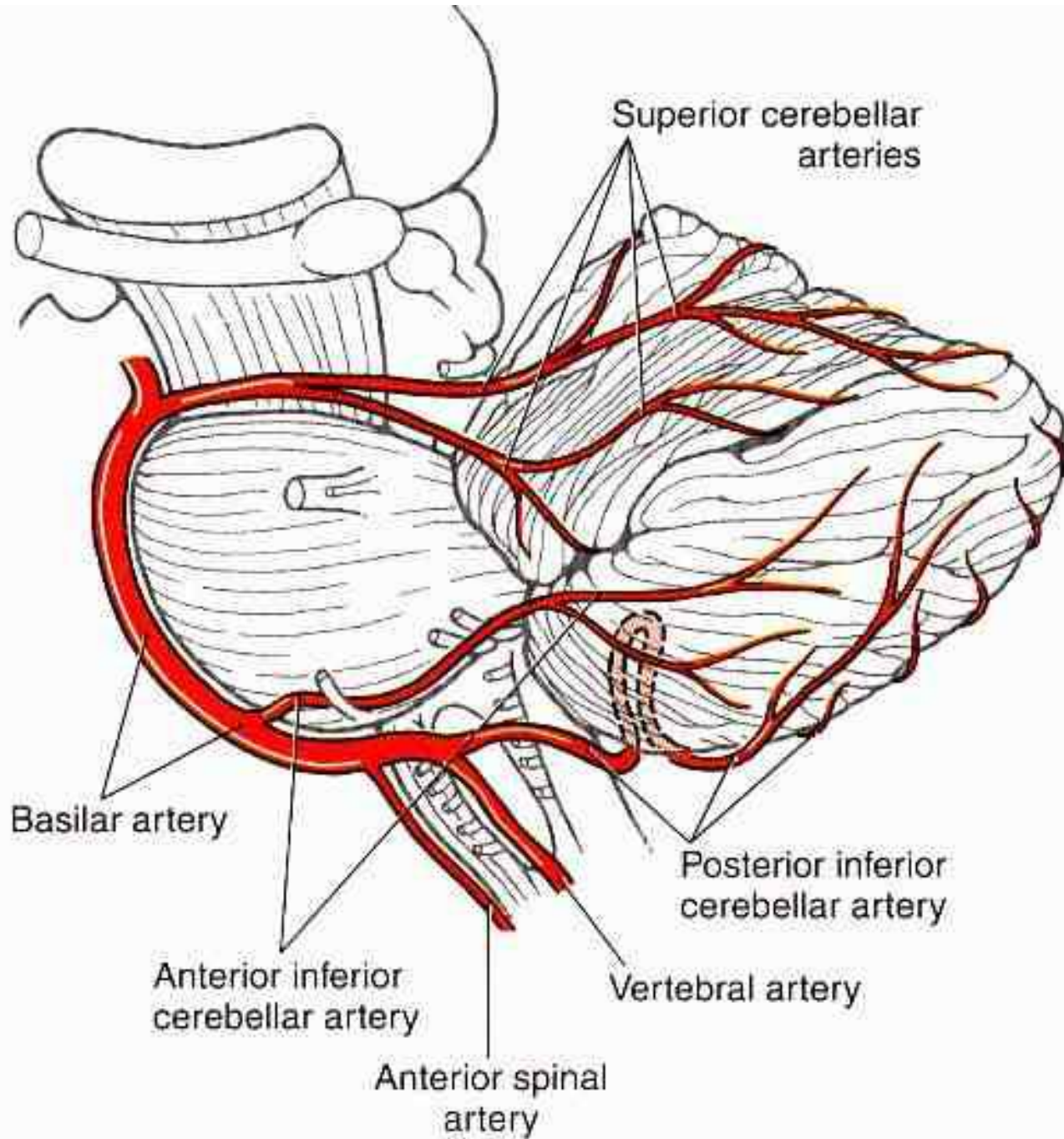
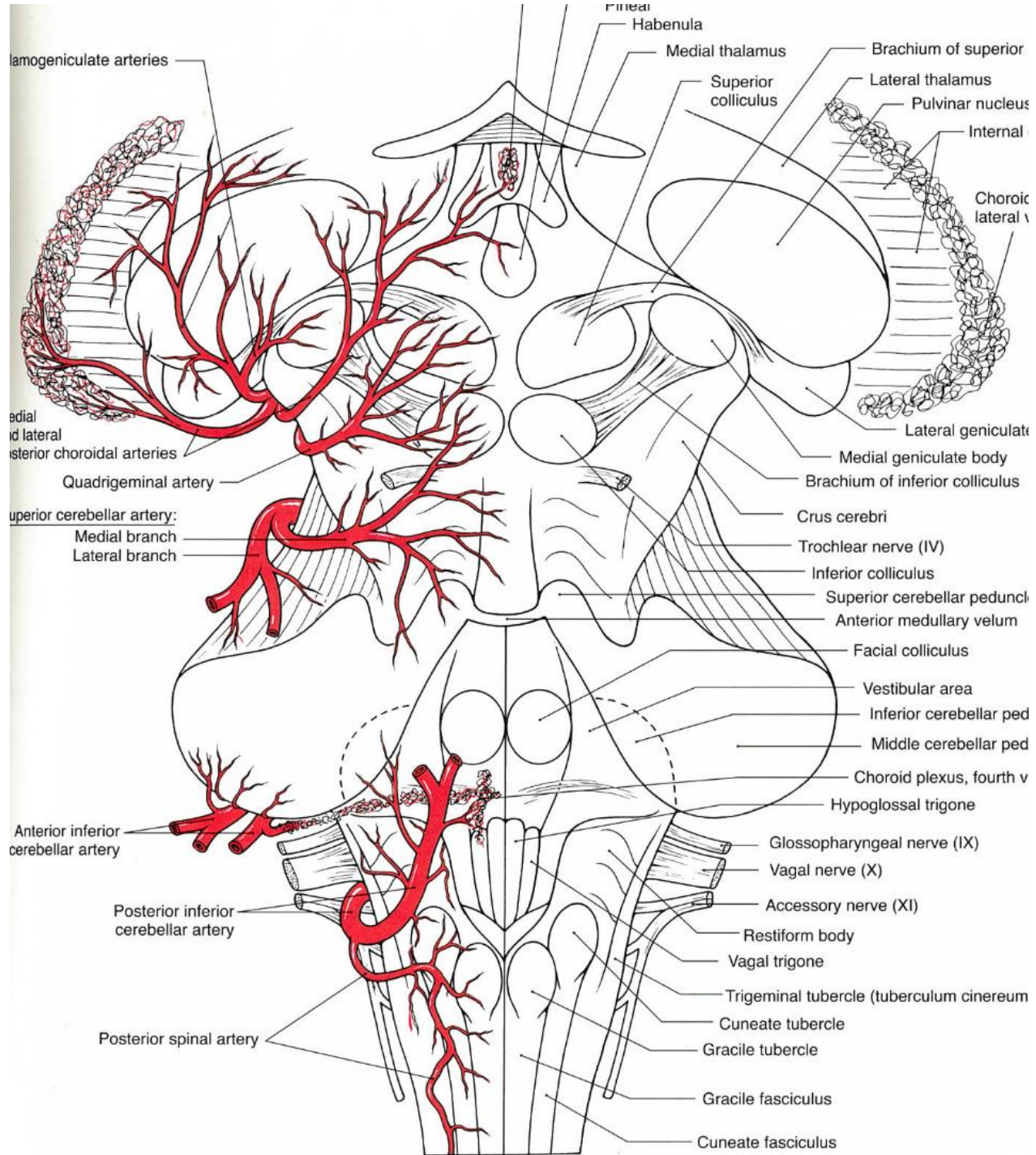


Fig. 1: Showing the normal pattern of the circle of Willis







lamogeniculate arteries

medial and lateral anterior choroidal arteries

Quadrigeminal artery

superior cerebellar artery:
Medial branch
Lateral branch

Anterior inferior cerebellar artery

Posterior inferior cerebellar artery

Posterior spinal artery

Habenula

Medial thalamus

Superior colliculus

Brachium of superior lateral thalamus

Pulvinar nucleus

Internal

Choroid lateral

Lateral geniculate

Medial geniculate body

Brachium of inferior colliculus

Crus cerebri

Trochlear nerve (IV)

Inferior colliculus

Superior cerebellar peduncle

Anterior medullary velum

Facial colliculus

Vestibular area

Inferior cerebellar peduncle

Middle cerebellar peduncle

Choroid plexus, fourth v

Hypoglossal trigone

Glossopharyngeal nerve (IX)

Vagal nerve (X)

Accessory nerve (XI)

Restiform body

Vagal trigone

Trigeminal tubercle (tuberculum cinereum)

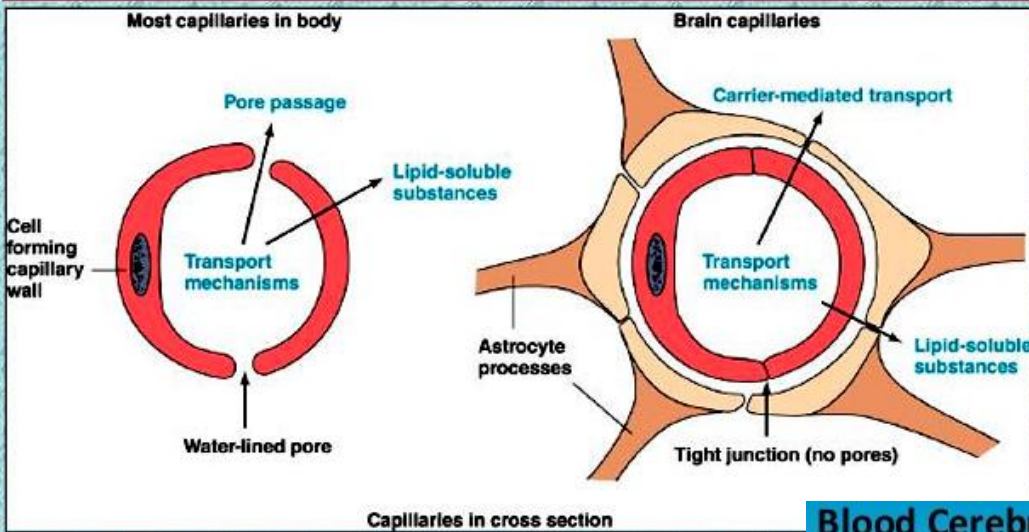
Cuneate tubercle

Gracile tubercle

Gracile fasciculus

Cuneate fasciculus

The Blood Brain Barrier



Blood Cerebrospinal Fluid and Blood Brain Barrier

A barrier protects the brain and spinal cord from harmful substances.

