

Kosti a klouby lebky a
osové kostry

Bones and joints
of skull and axial
skeleton

RTG lebky, frontální pohled

X-ray picture of the skull, frontal view

sutura coronalis



ala minor ossis sphenoidalis

fissura orbitalis superior

cellulae ethmoidales

concha nasalis media

concha nasalis inferior

angulus mandibulae

sutura sagittalis

sutura lambdoidea

sinus frontalis

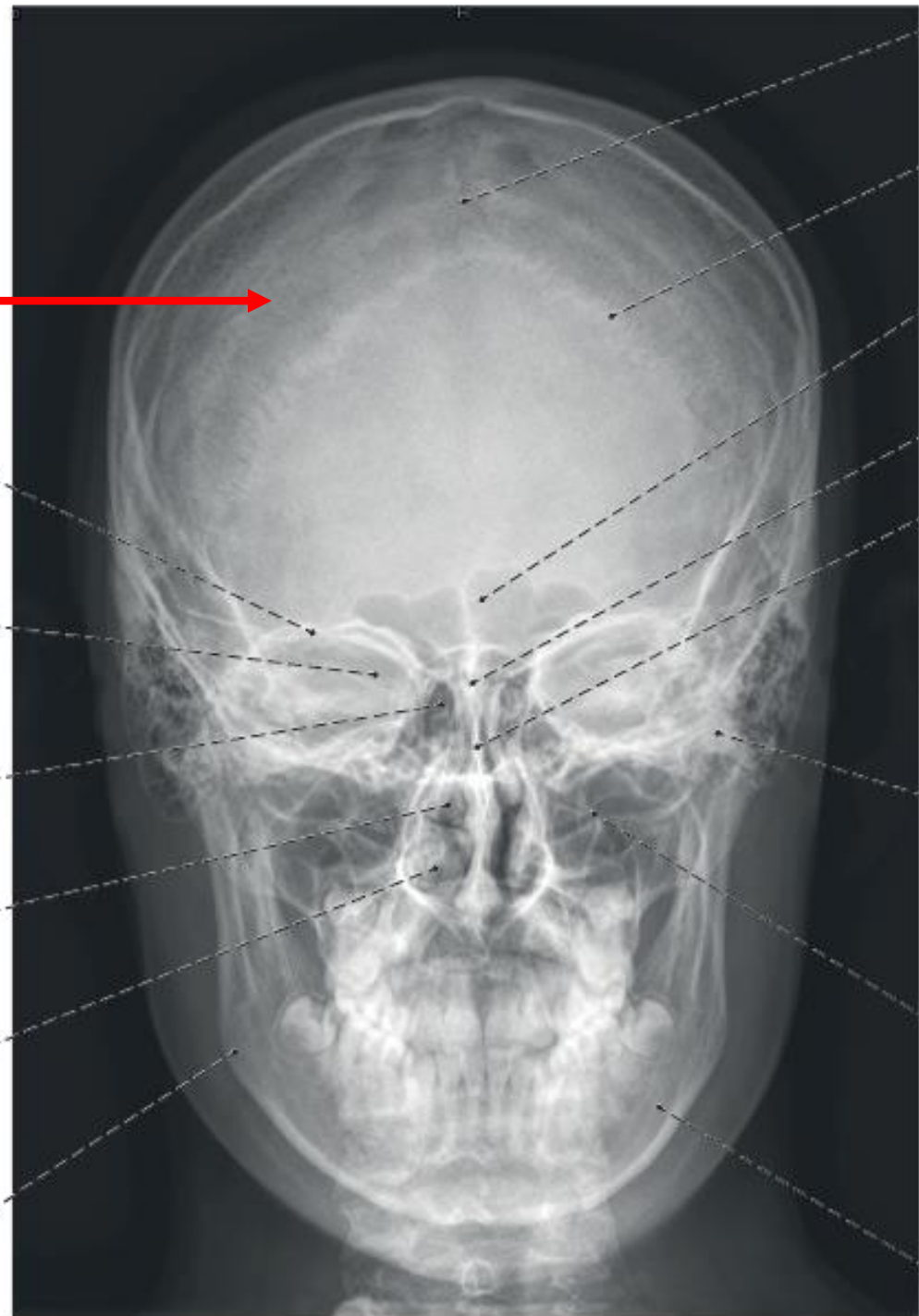
lamina cribrosa ossis ethmoidalis

septum nasi

os zygomaticum

sinus maxillaris

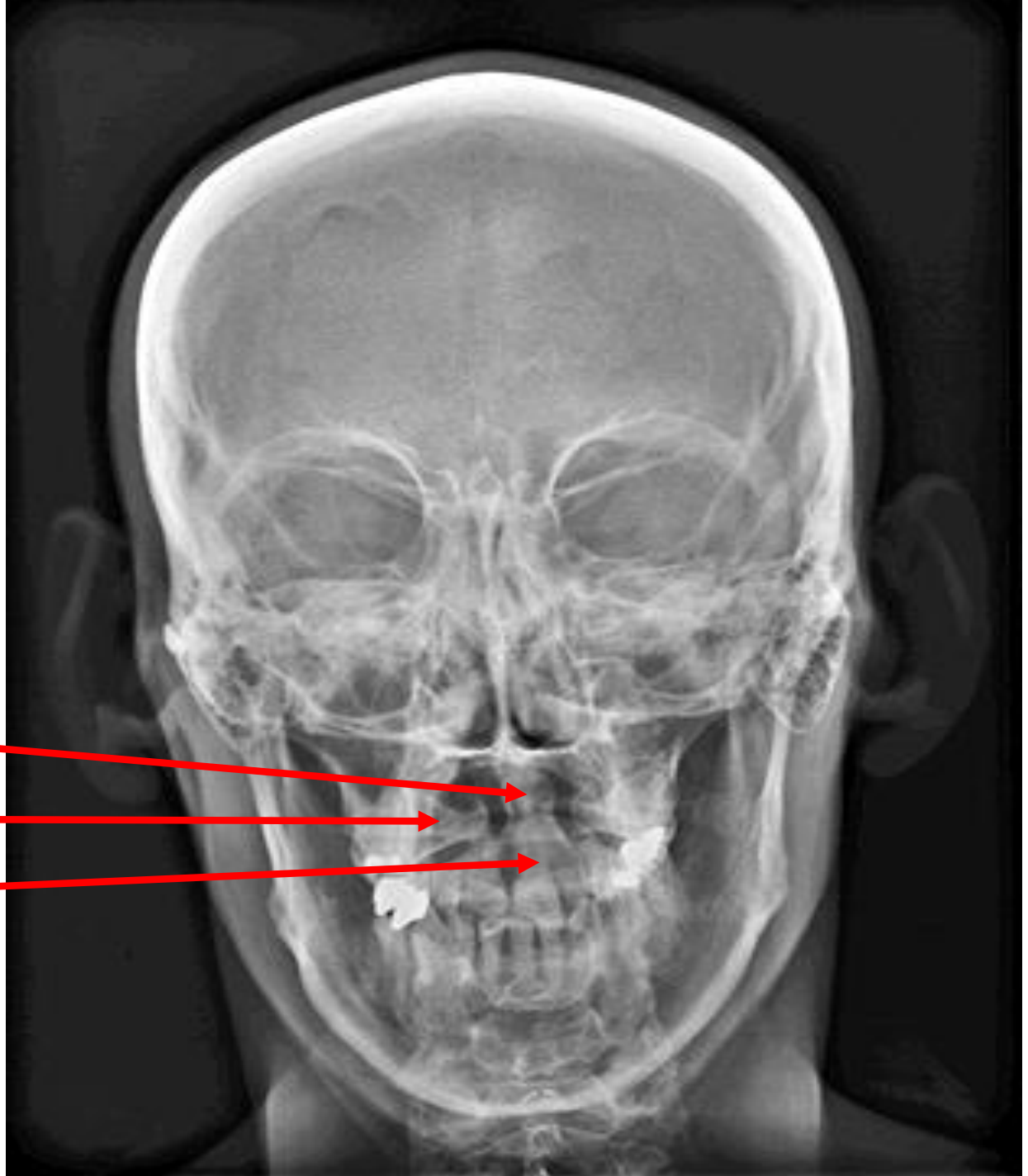
mandibula



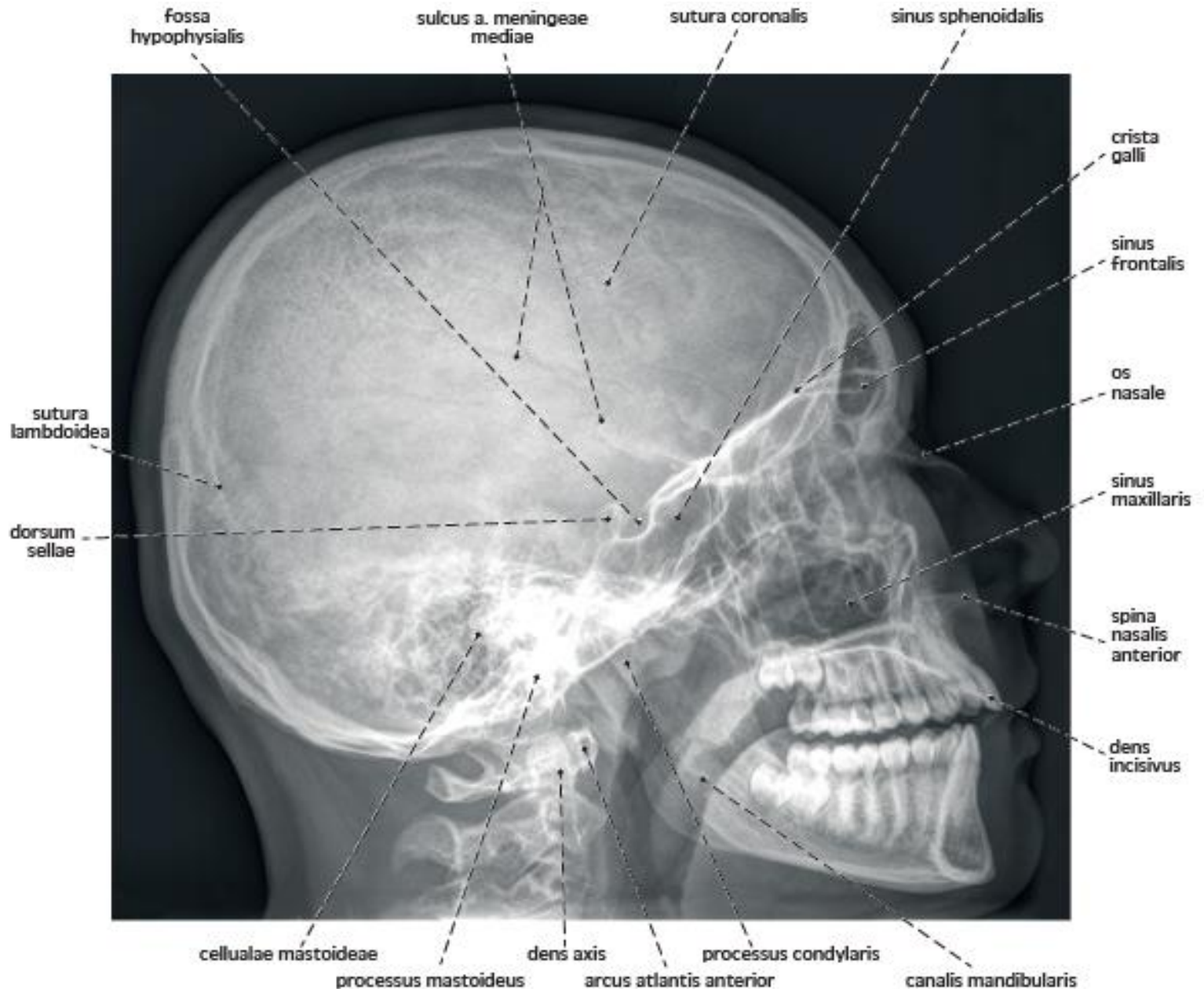
RTG lebky, frontální pohled

X-ray picture of the skull,
frontal view

Dens axis
Massa lateralis atlantis
Corpus axis



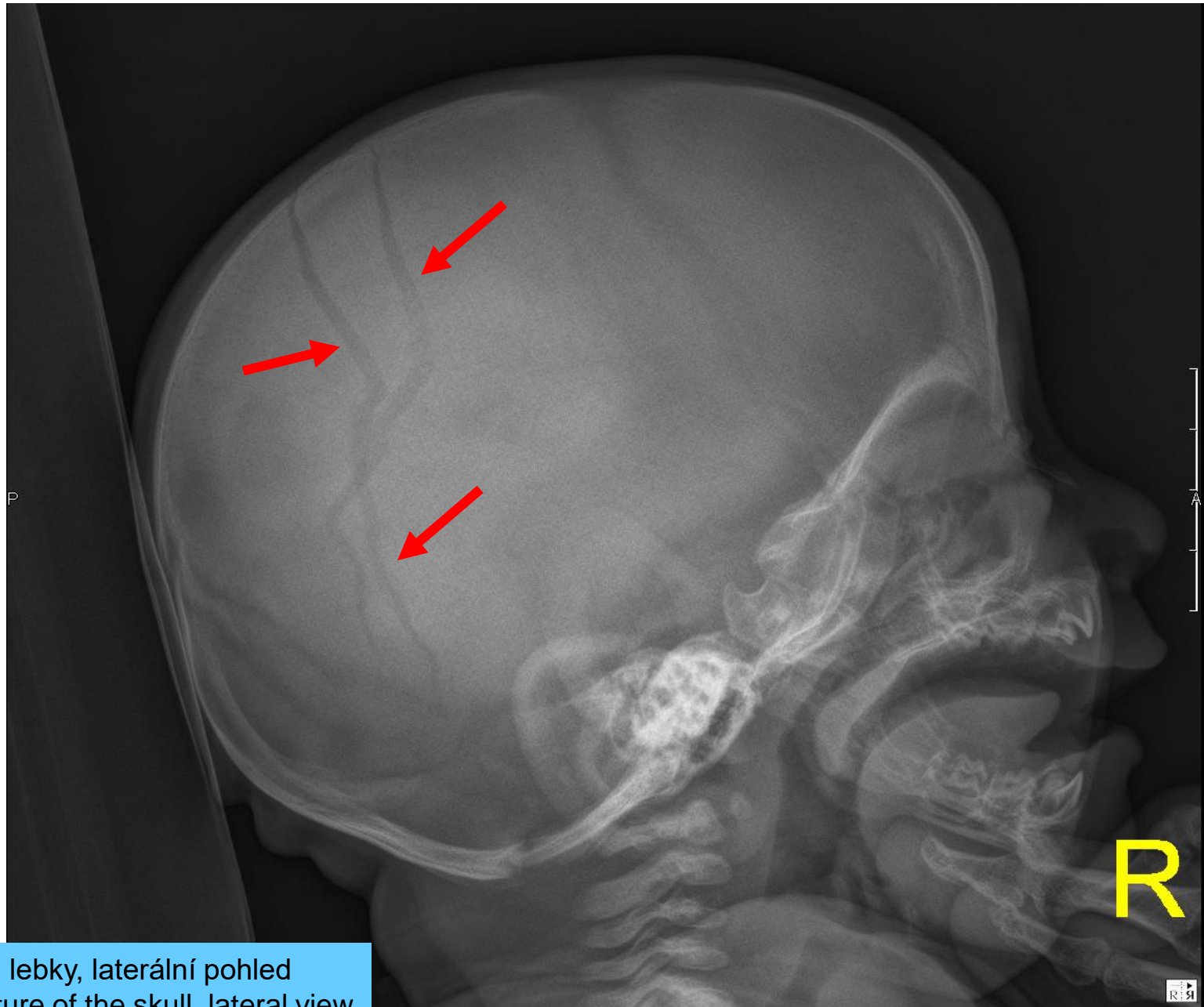
RTG lebky, laterální pohled
X-ray picture of the skull, lateral view



RTG lebky, laterální pohled
X-ray picture of the skull, lateral view



Fractura ossis parietalis bilateralis



RTG lebky, laterální pohled
X-ray picture of the skull, lateral view

fonticulus anterior

sutura sagittalis

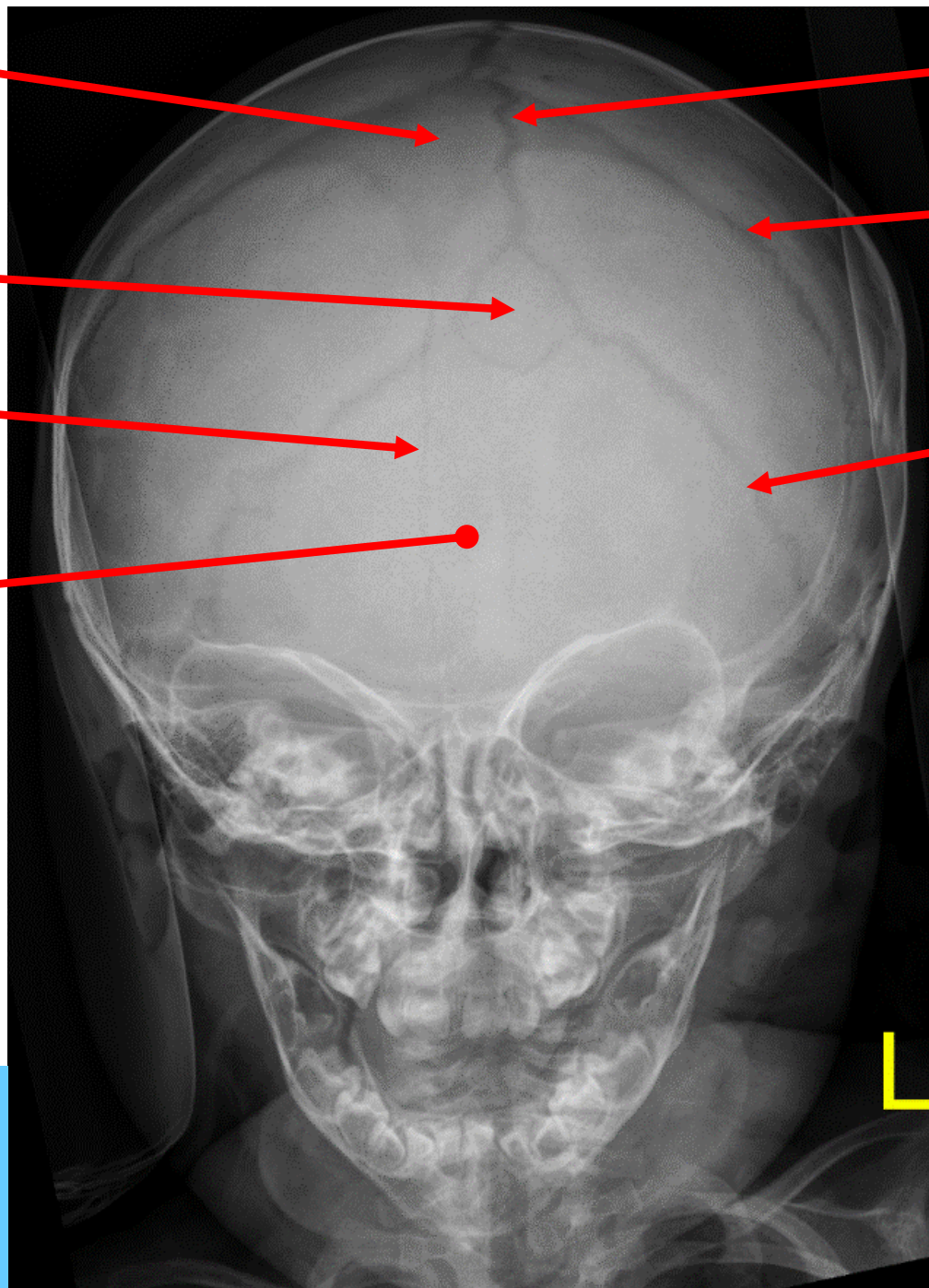
os interparietale

sutura coronalis

sutura frontalis
persistens

sutura lambdoidea

os occipitale

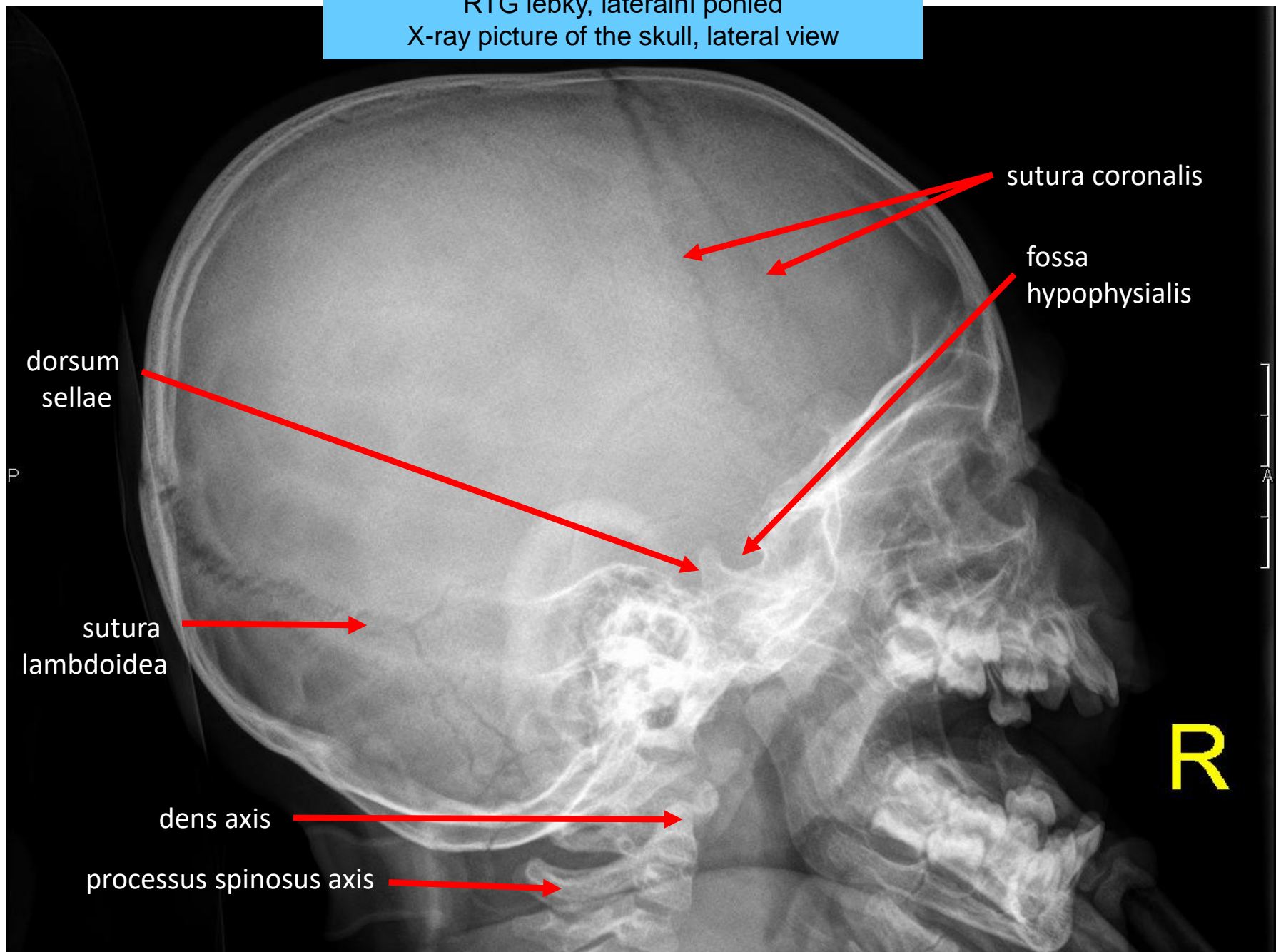


RTG lebky,
frontální pohled

X-ray picture of the skull,
frontal view

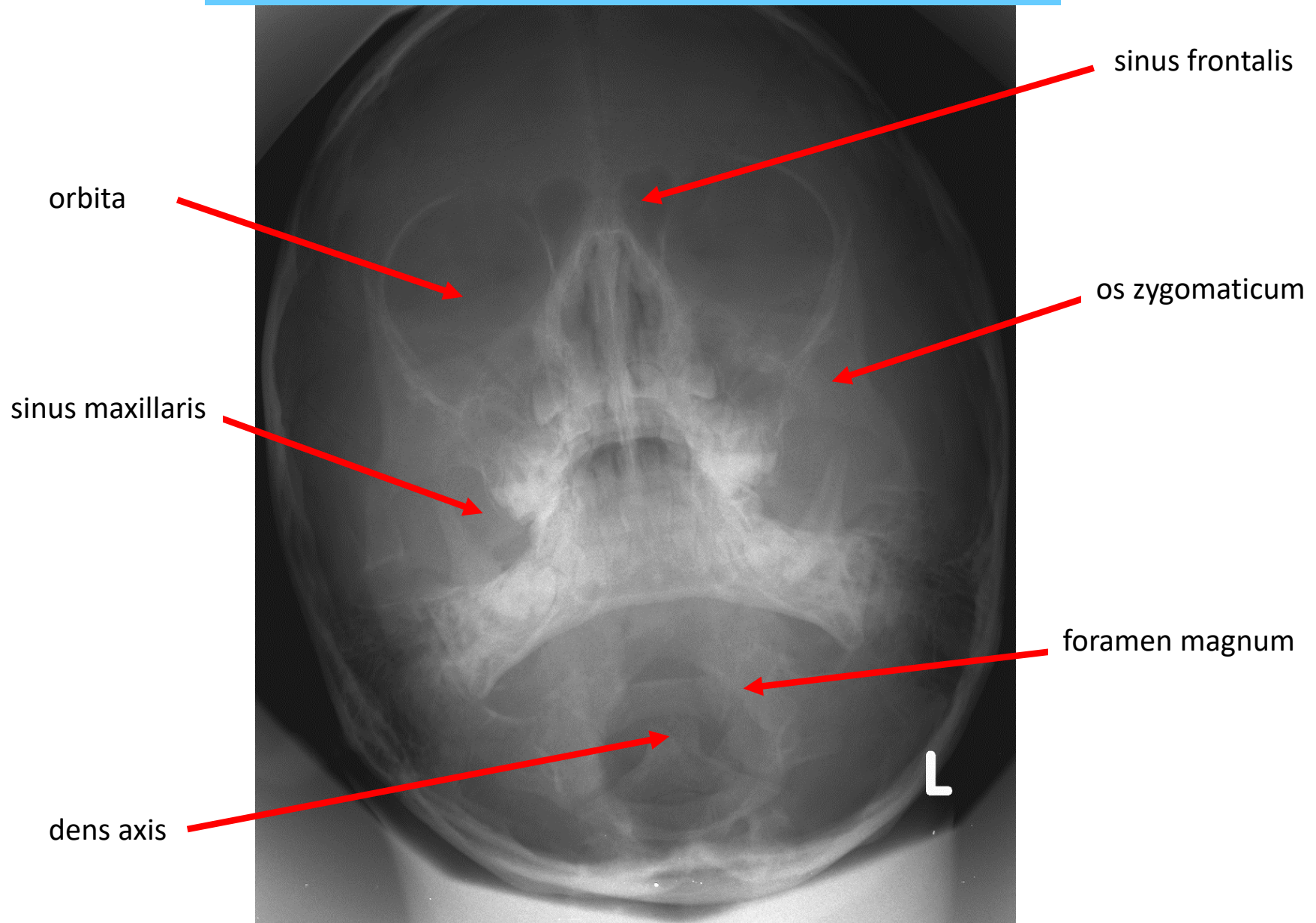
8 měsíců / months

RTG lebky, laterální pohled
X-ray picture of the skull, lateral view



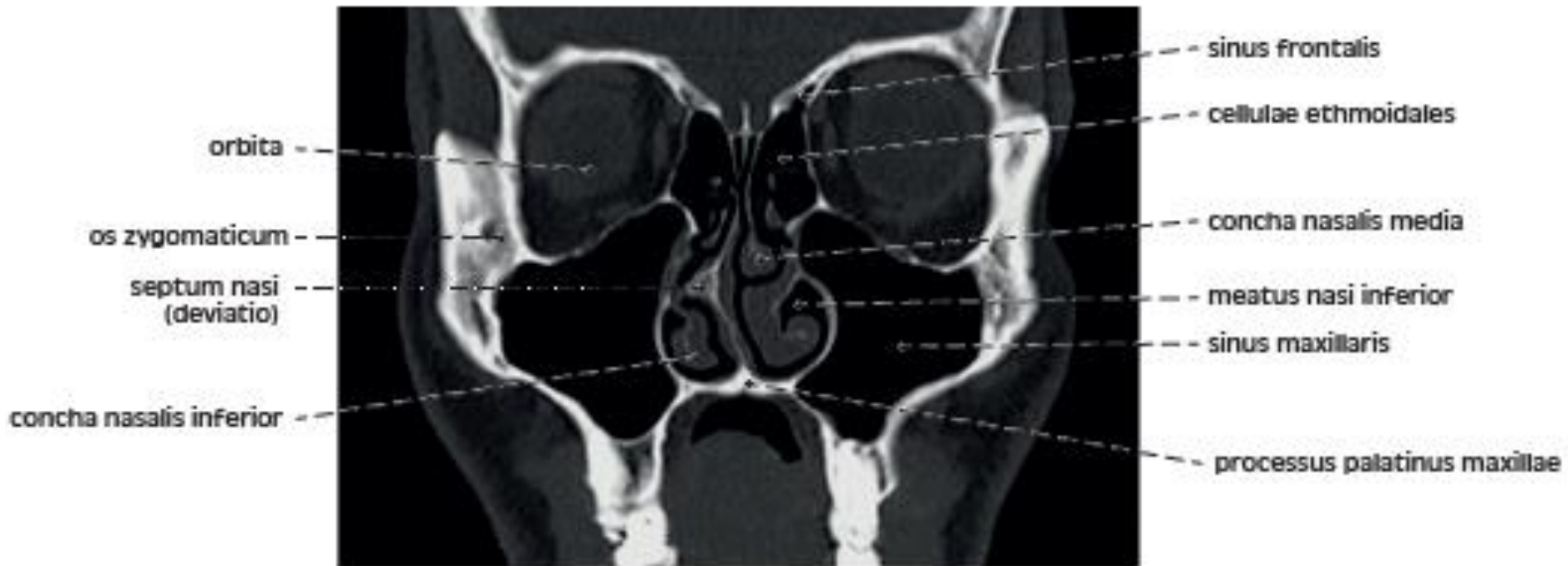
16 měsíců / 16 months

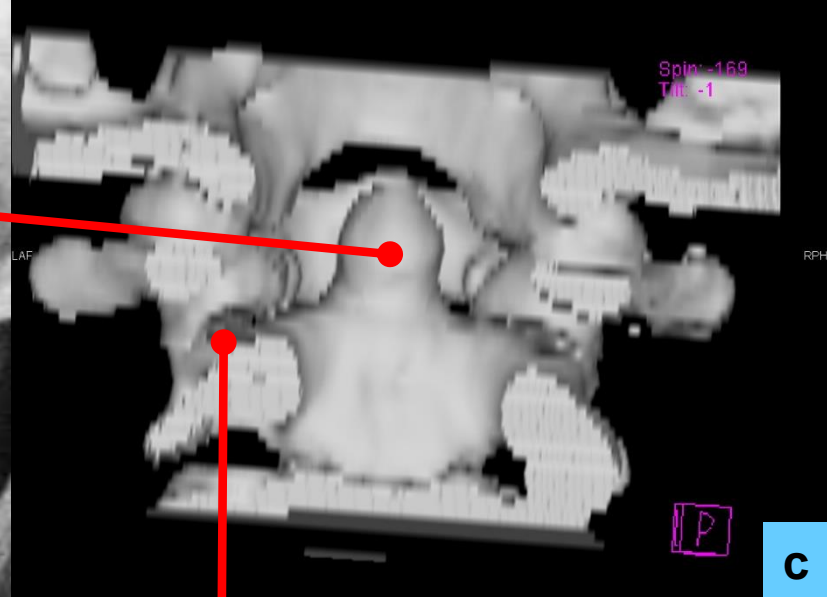
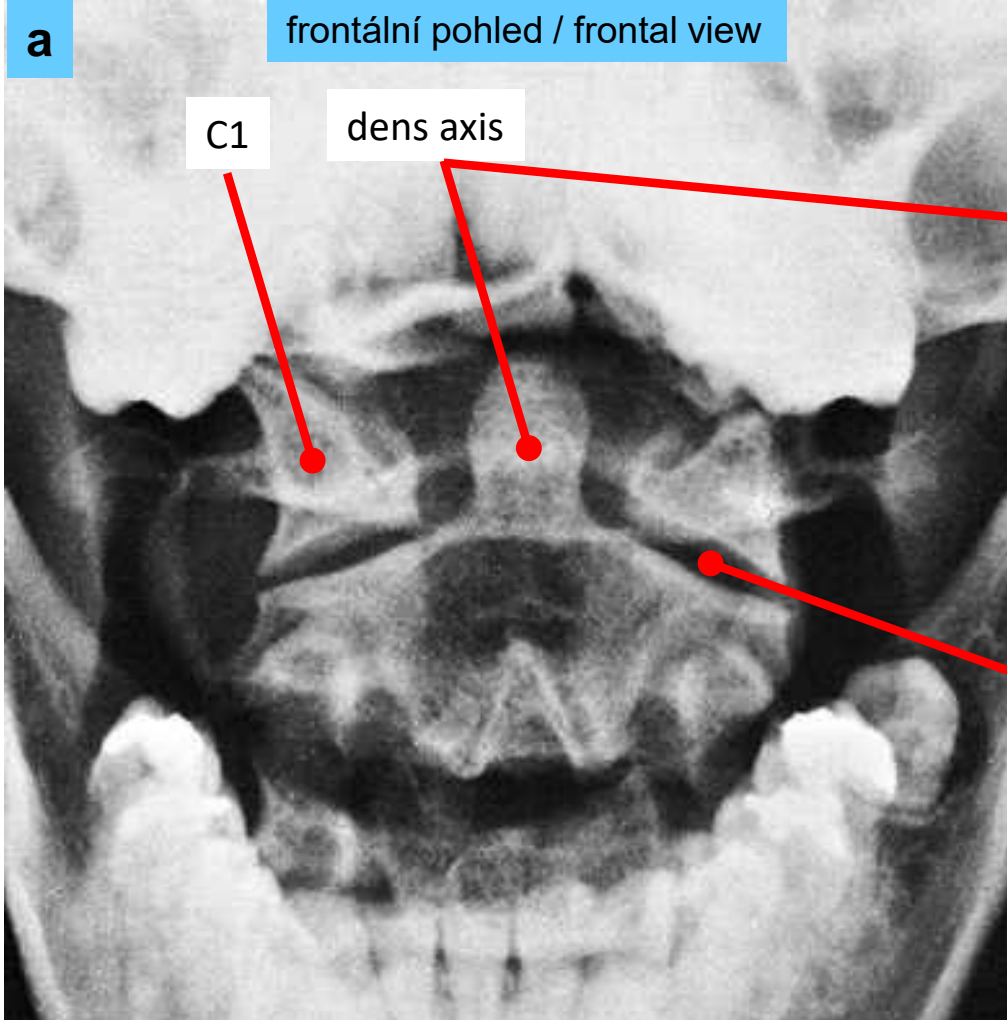
RTG lebky, frontální pohled
Sandbergova projekce na dens axis s otevřenými ústy
X-ray picture of the skull, frontal view
Sandberg's projection with opened mouth to show dens axis



CT lebky – nosní dutina a vedlejší nosní dutiny,
frontální pohled

CT scan of skull – nasal cavity and paranasal
sinuses, frontal view



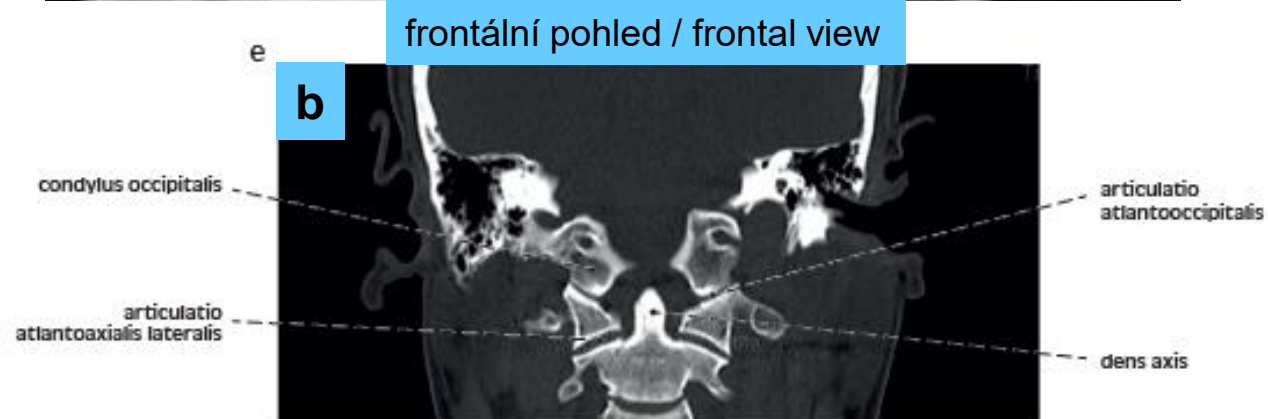


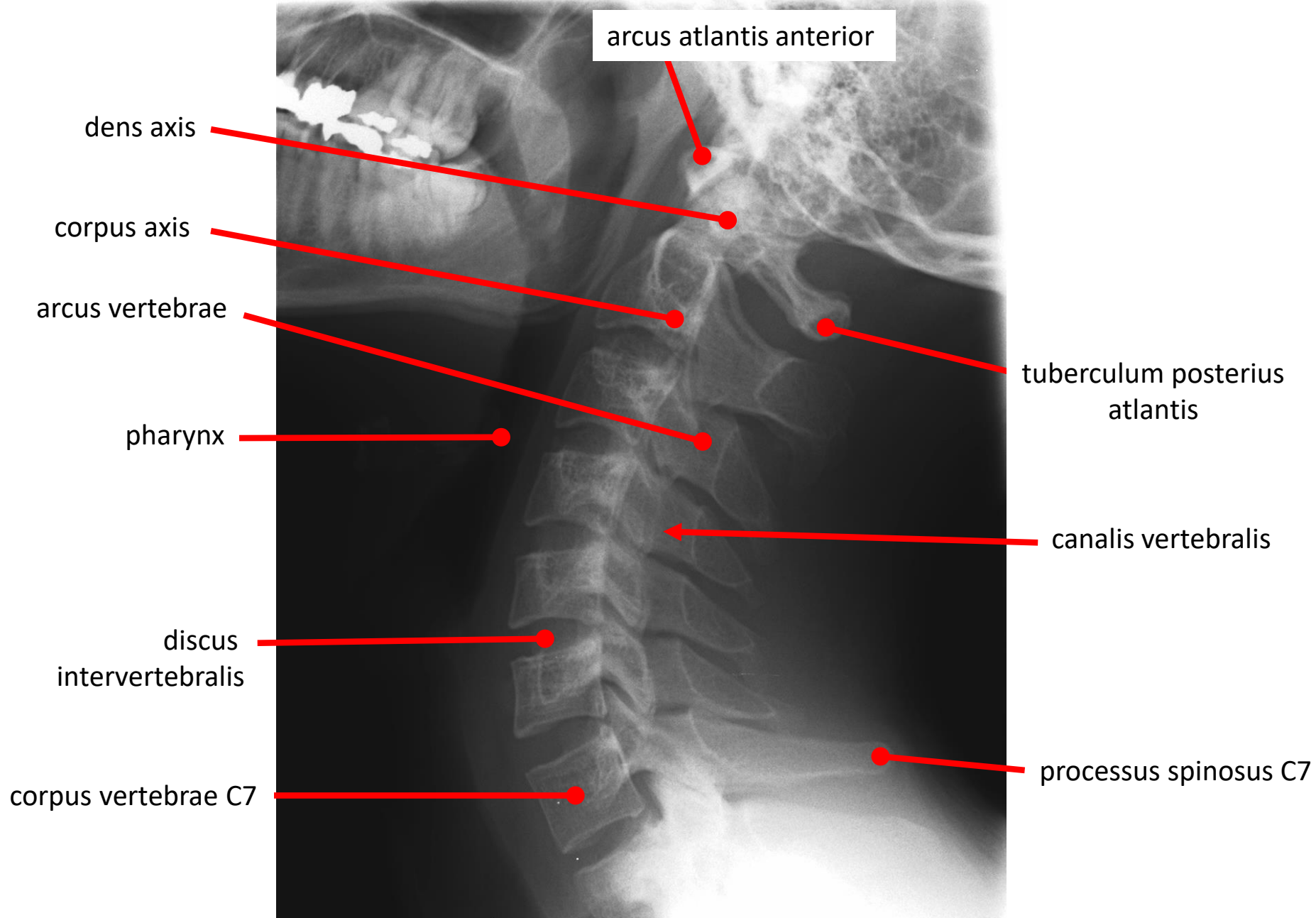
dorzální pohled / dorsal view

articulatio atlantoaxialis lateralis

Obratel C2 (čepovec)
RTG (a)
CT (b)
CT rekonstrukce (c)

Vertebra C2 (axis)
X-ray (a)
CT (b)
CT reconstruction (c)

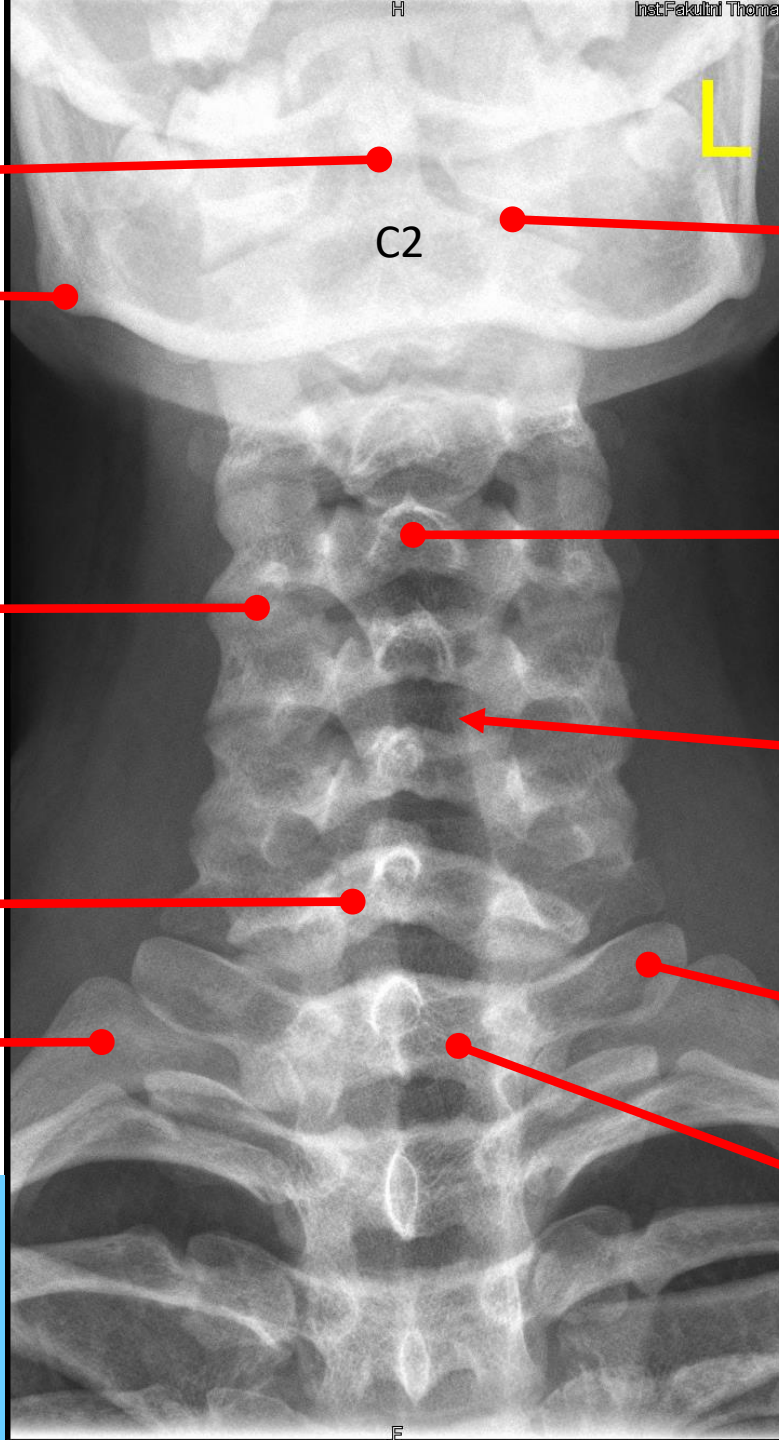




RTG krční páteře, laterální pohled

X-ray picture of the cervical part of the vertebral column, lateral view

zaklon



dens axis

C2

angulus
mandibulae

articulatio atlantoaxialis
lateralis

articulatio
zygapophysialis

processus spinosus

canalis vertebralis

C7

costa prima

processus transversus

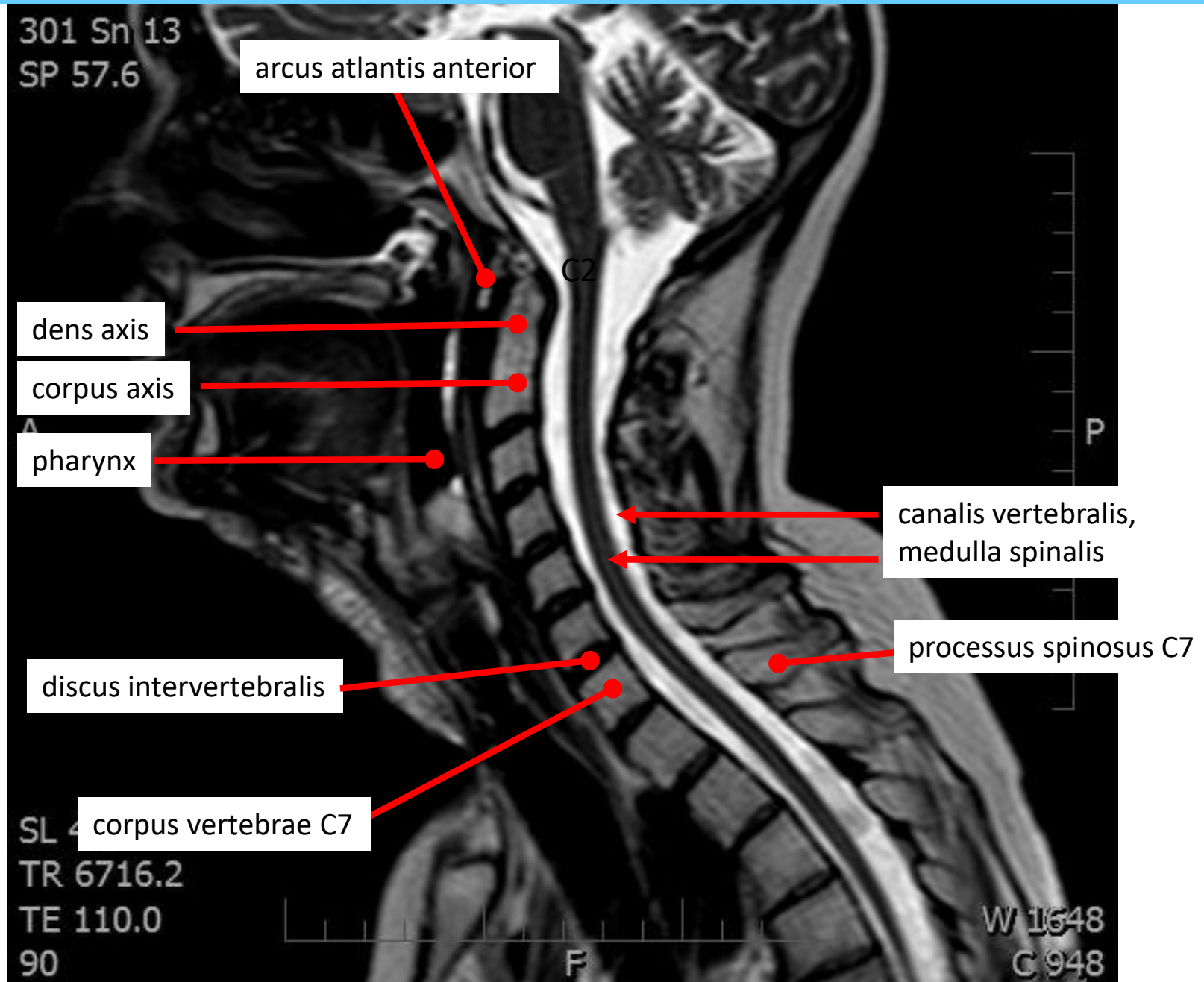
T1

RTG krční páteře,
frontální pohled

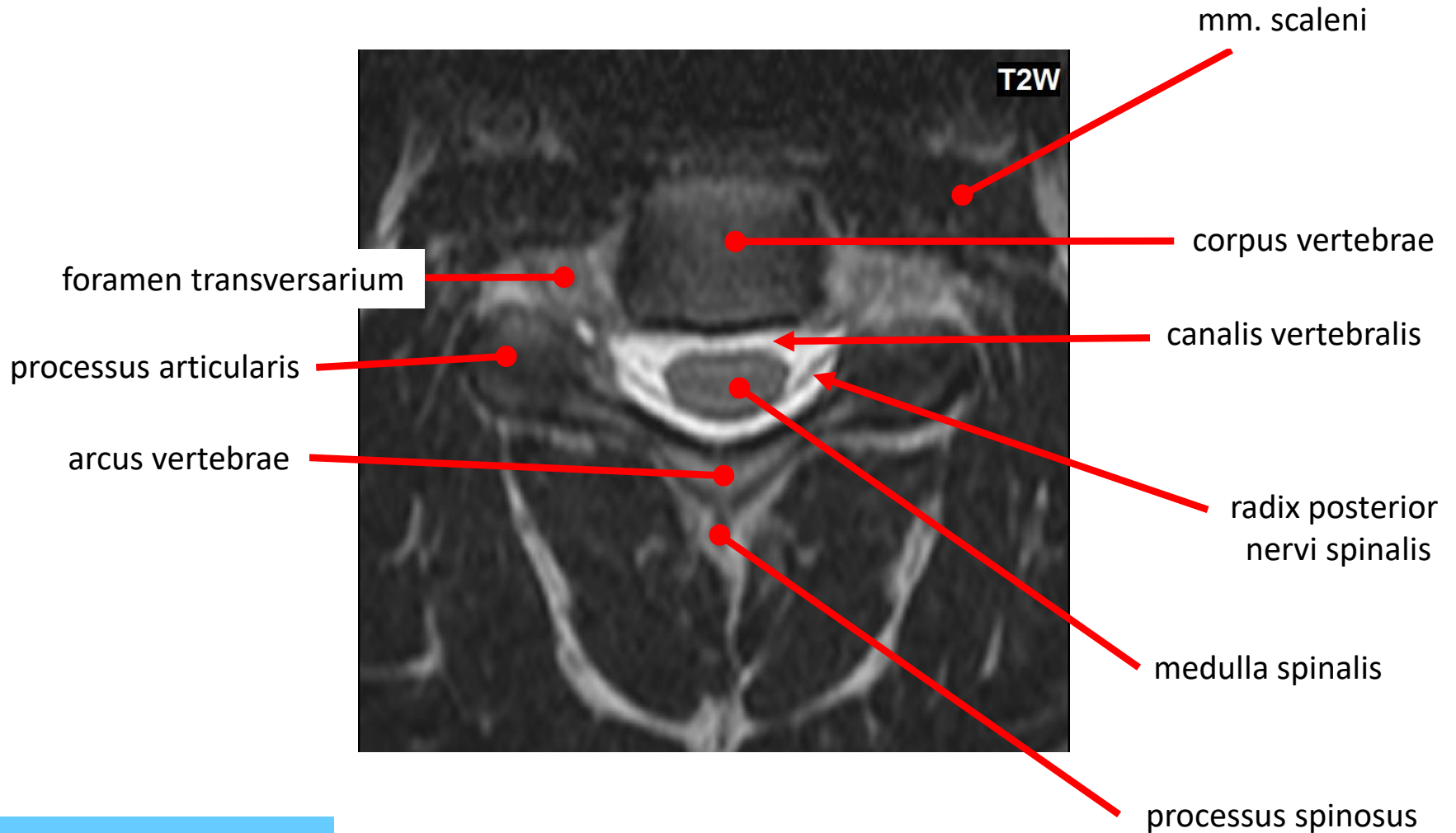
X-ray picture of the cervical
part of the vertebral column,
frontal view

MRI krční páteře, laterální pohled

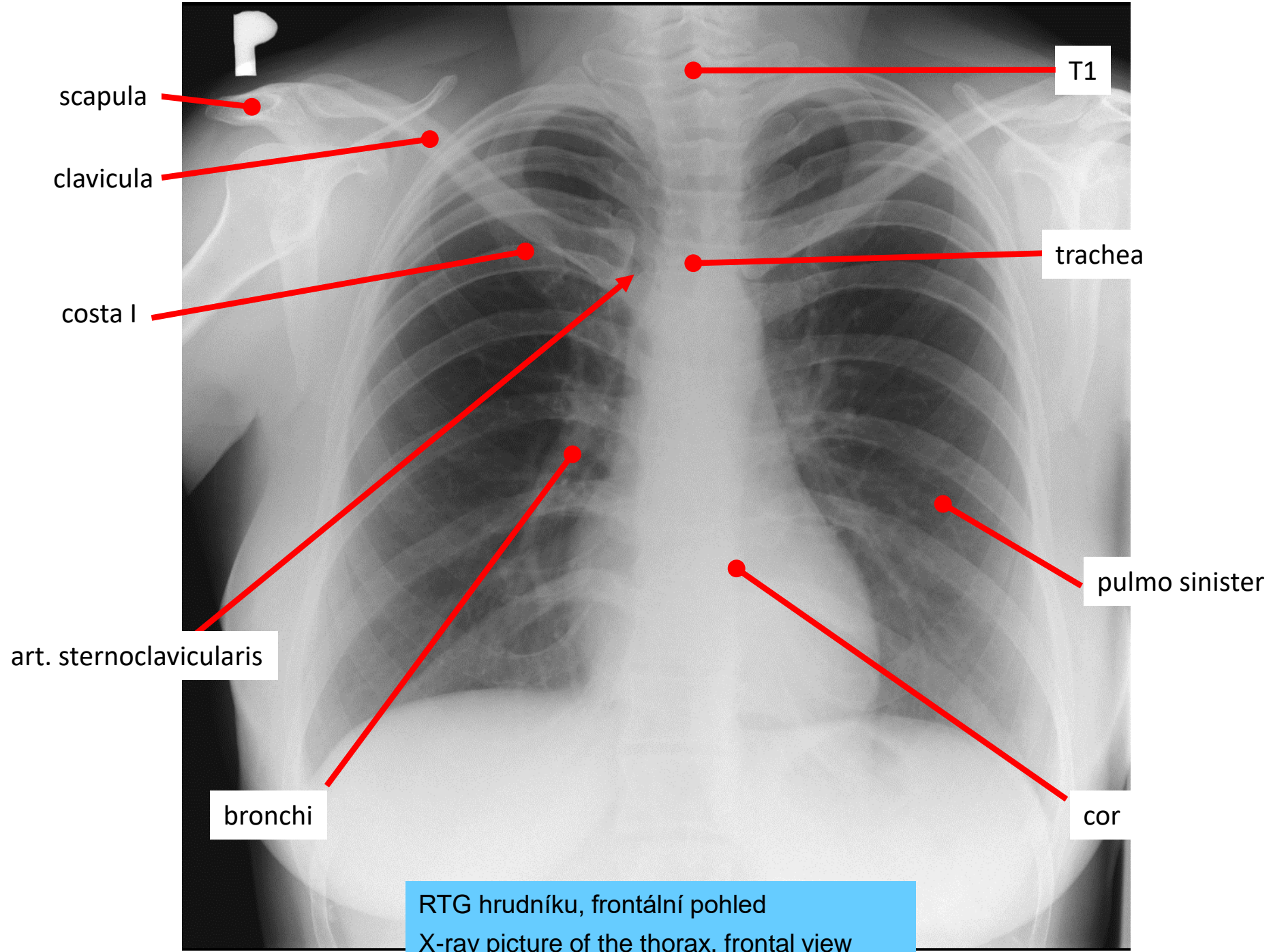
MRI scan of the cervical part of the vertebral column, lateral view



Vertebra cervicalis quarta (C4)



MRI krční páteře,
transverzální pohled
MRI scan of the cervical
spine, transversal view



scapula

clavicula

costa I

art. sternoclavicularis

bronchi

T1

trachea

pulmo sinister

cor

RTG hrudníku, frontální pohled
X-ray picture of the thorax, frontal view

RTG hrudníku, frontální pohled
X-ray picture of the thorax, frontal view

costa X

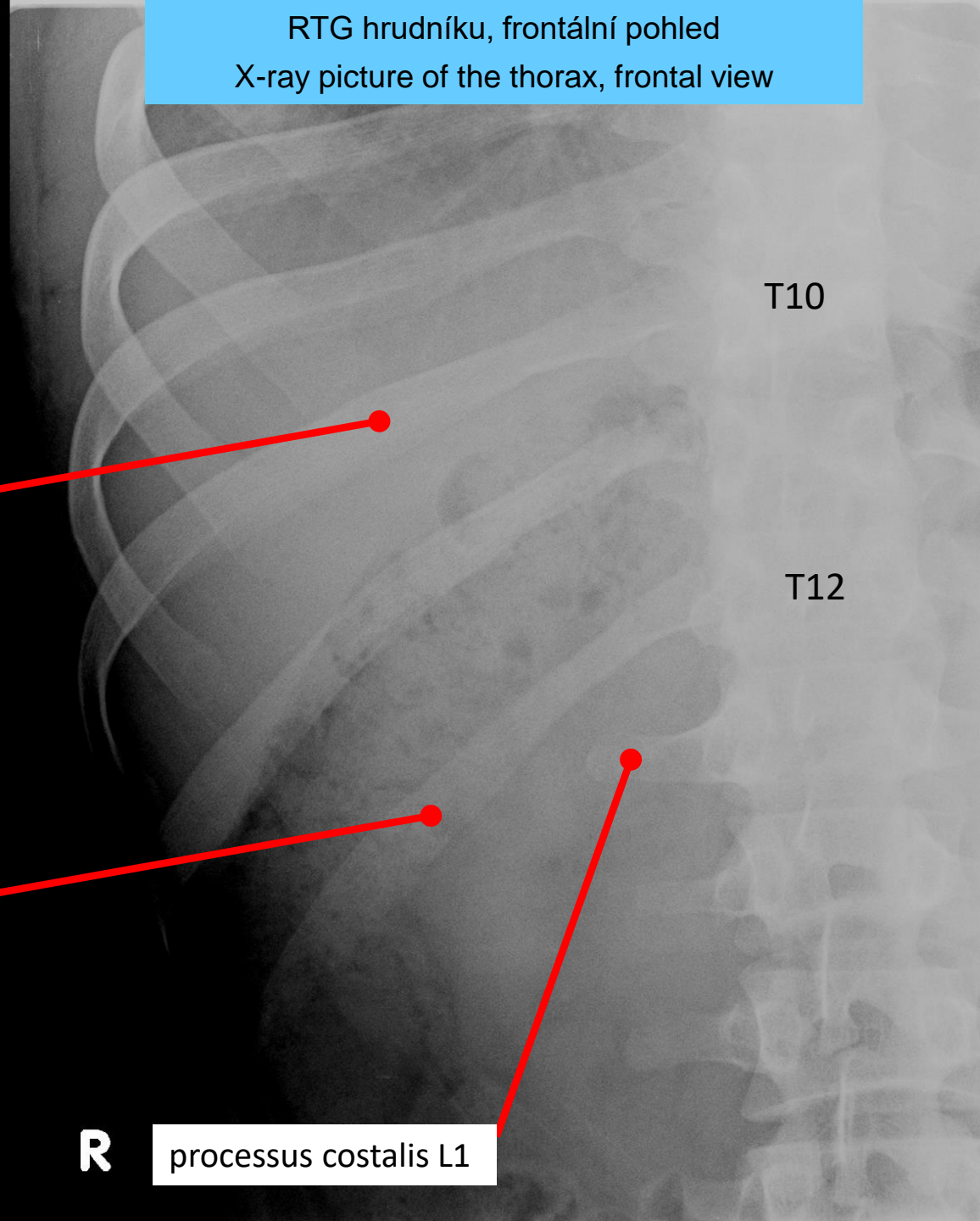
T10

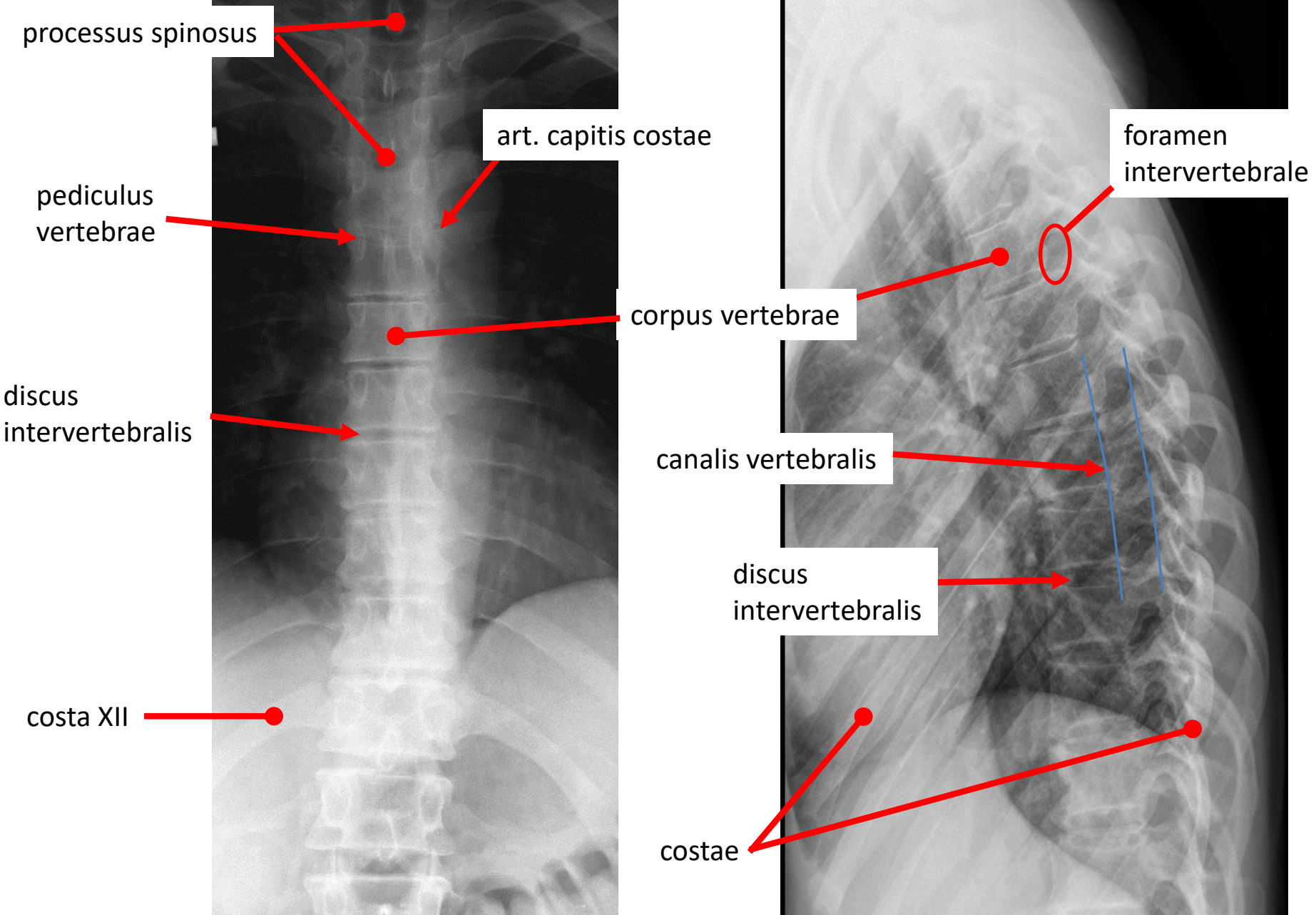
T12

costa XII

R

processus costalis L1





processus spinosus

art. capitis costae

foramen intervertebrale

pediculus vertebrae

corpus vertebrae

discus intervertebralis

canalis vertebralis

discus intervertebralis

costa XII

costae

RTG hrudní páteře, frontální a laterální pohled
X-ray picture of the thoracic part of the vertebral column, frontal and lateral view



Vertebra thoracica octava (T8)

MRI hrudní páteře, transverzální pohled
MRI scan of the thoracic part of the vertebral column, transverse view

corpus vertebrae

aorta thoracica

T2W

T2W

articulatio
capitis costae

costa

lig. flavum

processus spinosus

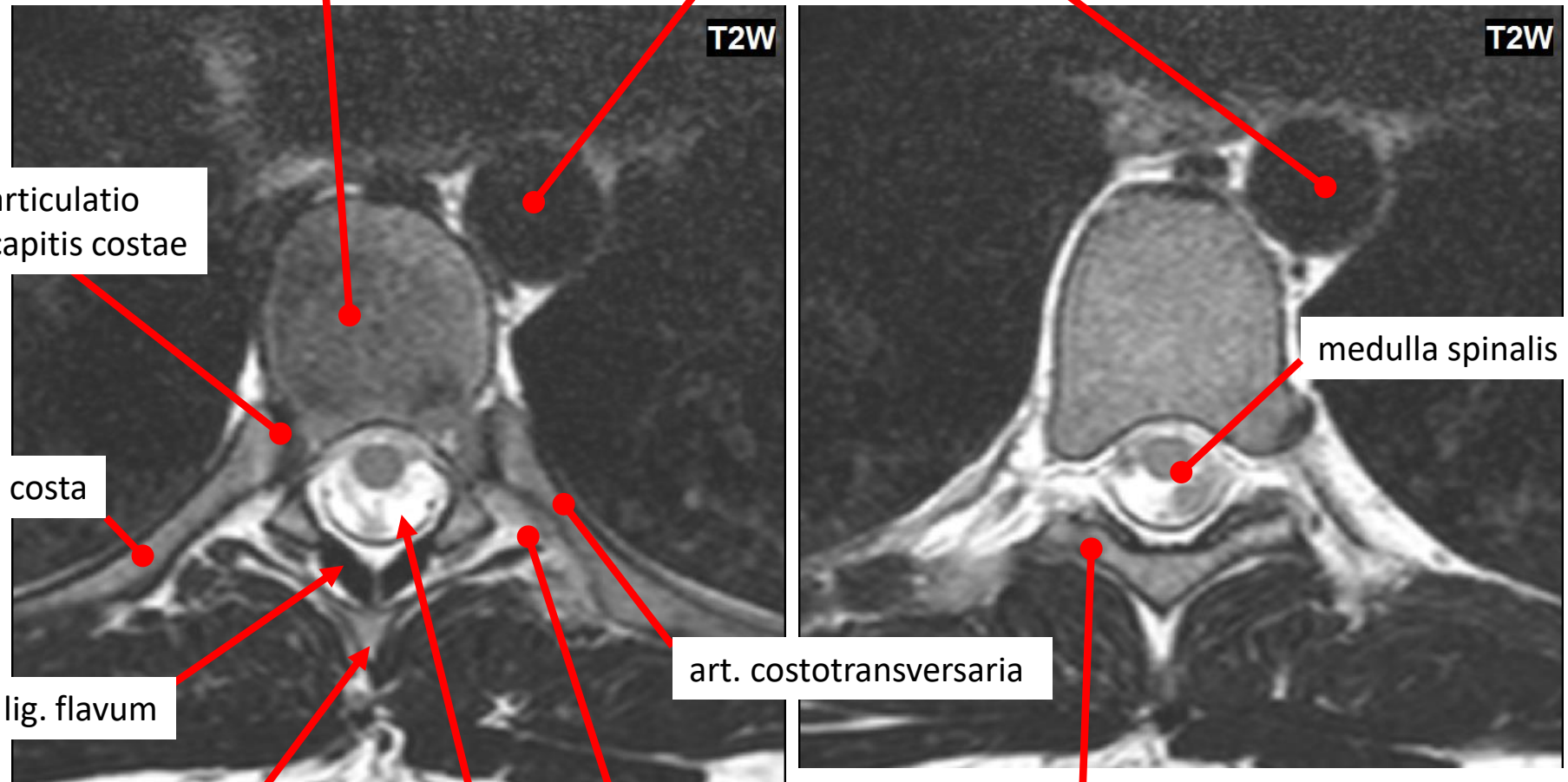
canalis vertebralis

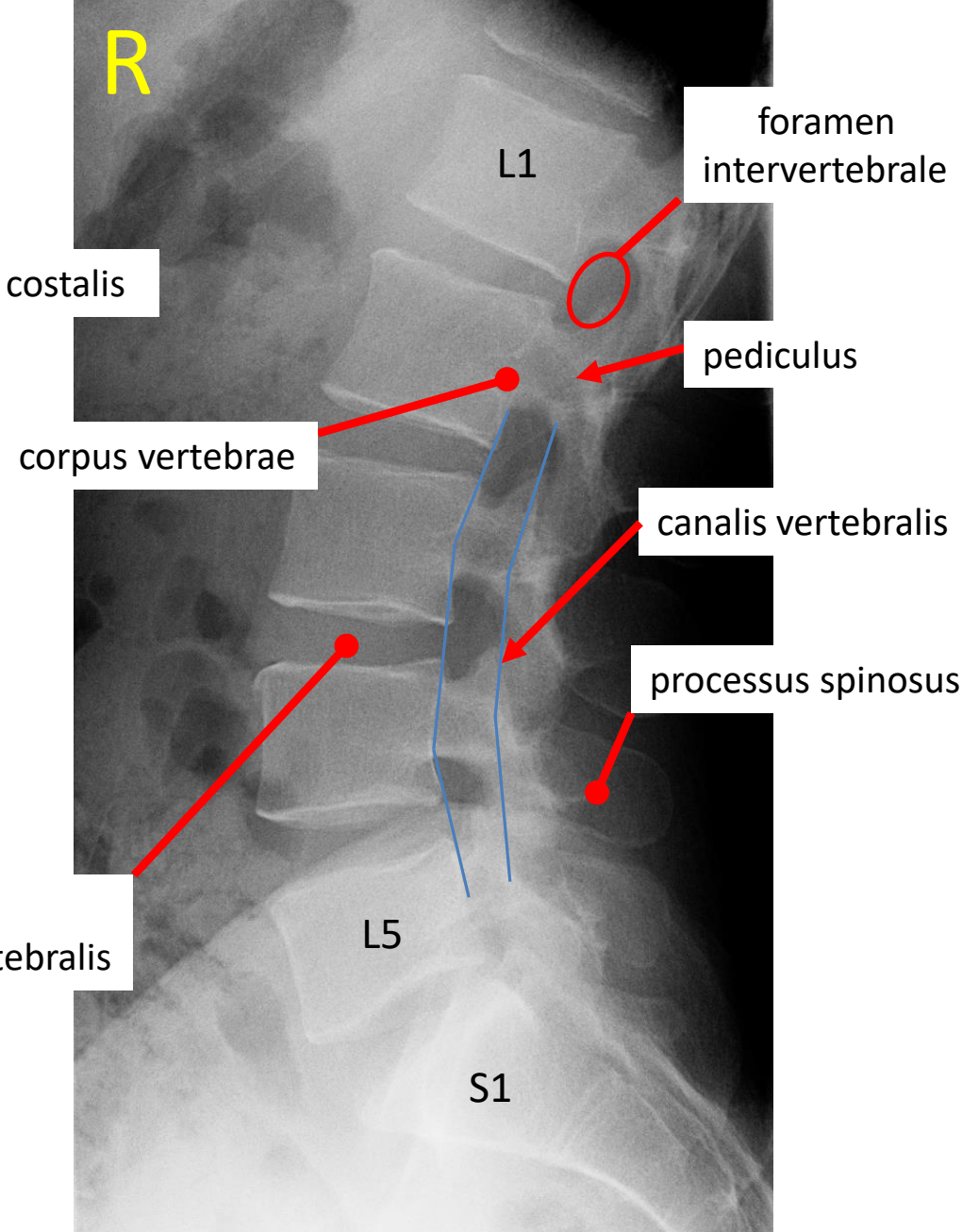
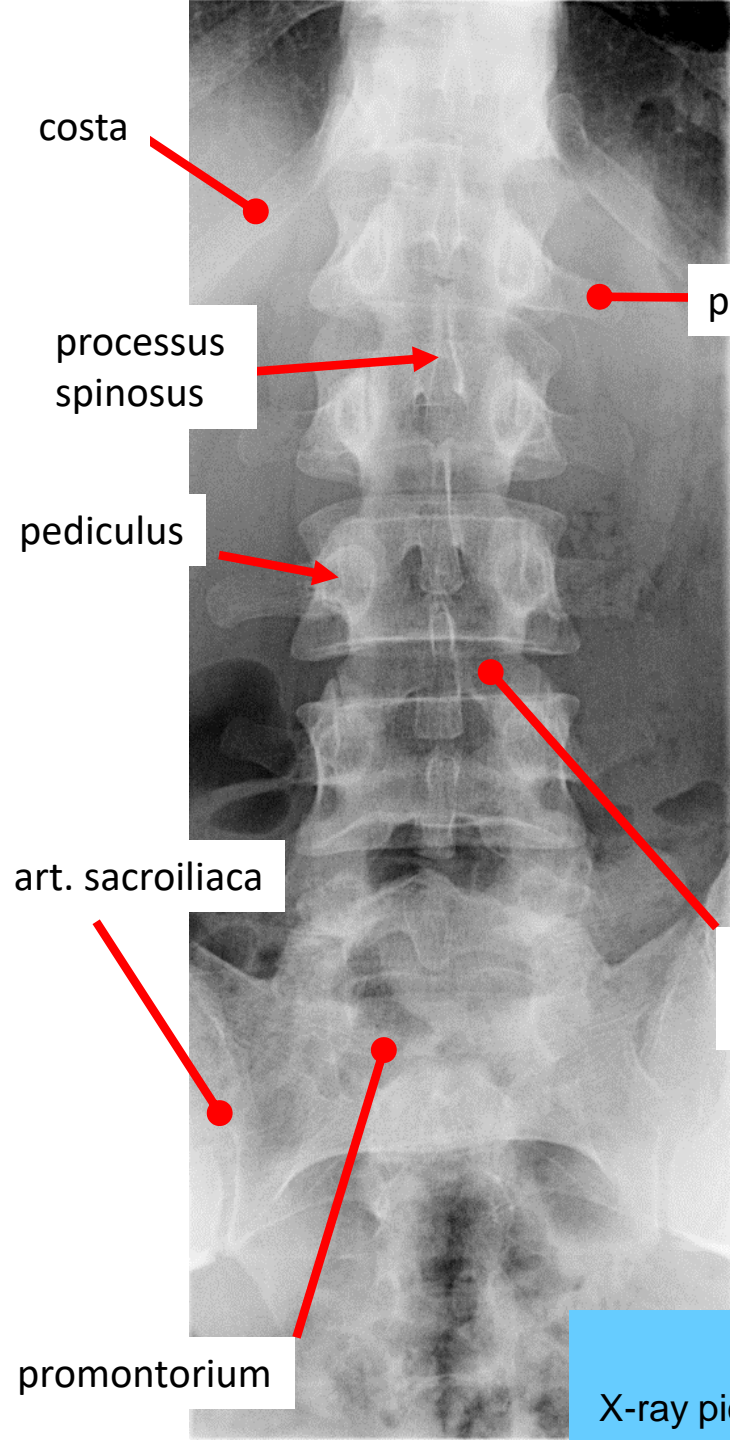
processus transversus

art. costotransversaria

medulla spinalis

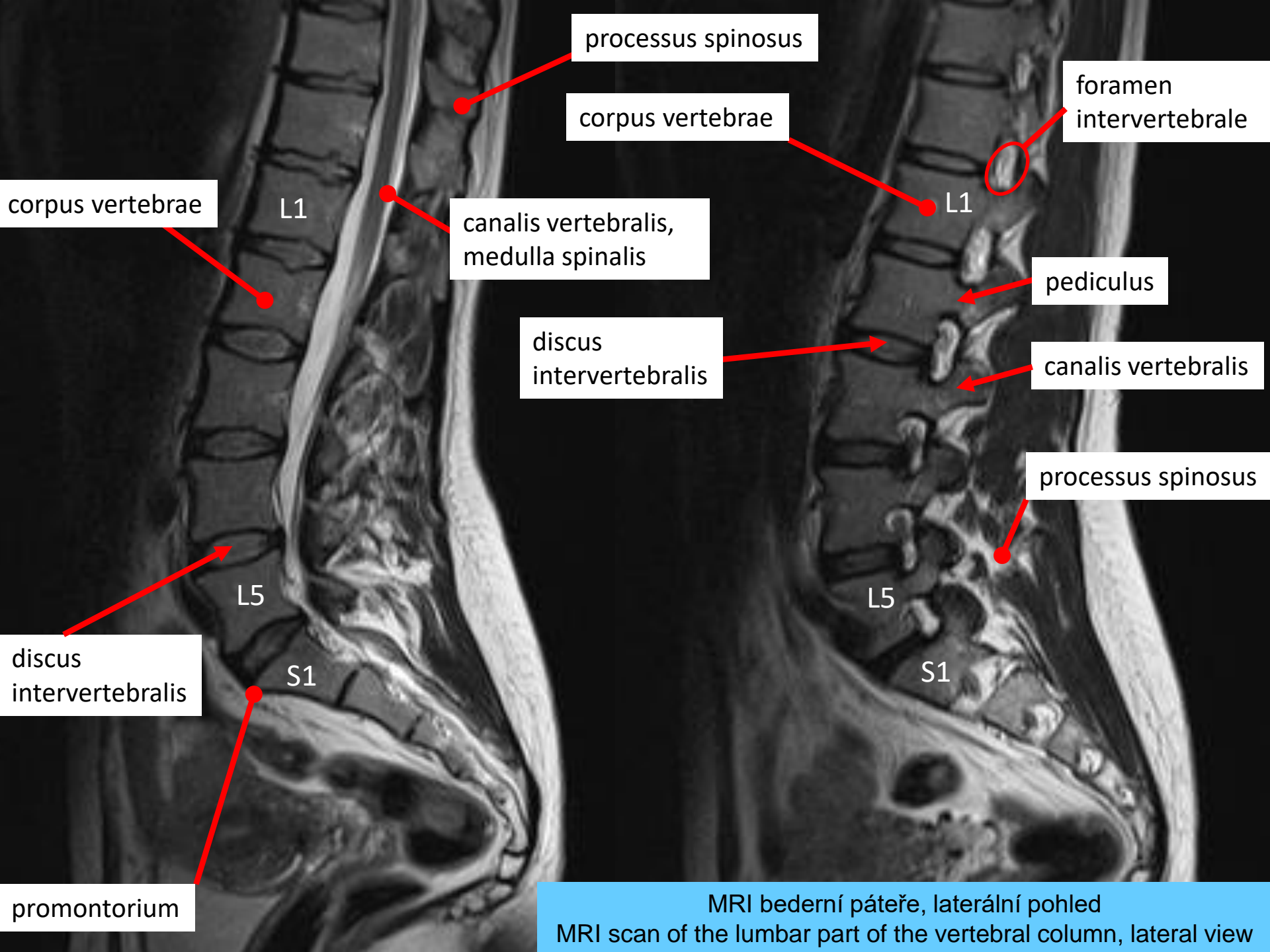
arcus vertebrae





RTG bederní páteře, frontální a laterální pohled

X-ray picture of the lumbar part of the vertebral column, frontal and lateral view



processus spinosus

corpus vertebrae

foramen
intervertebrale

corpus vertebrae

L1

canalis vertebralis,
medulla spinalis

L1

pediculus

discus
intervertebralis

canalis vertebralis

L5

L5

processus spinosus

discus
intervertebralis

S1

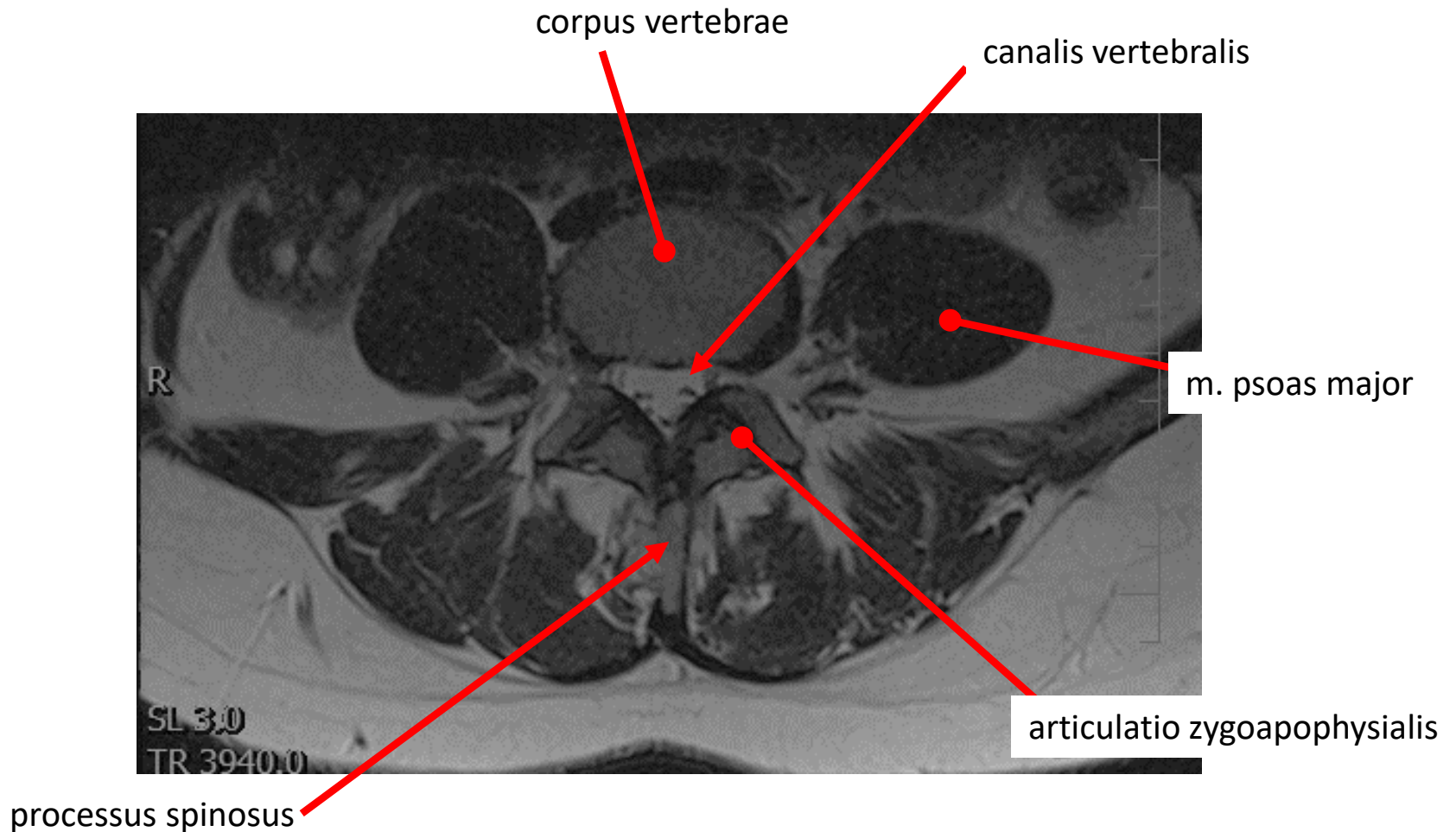
S1

promontorium

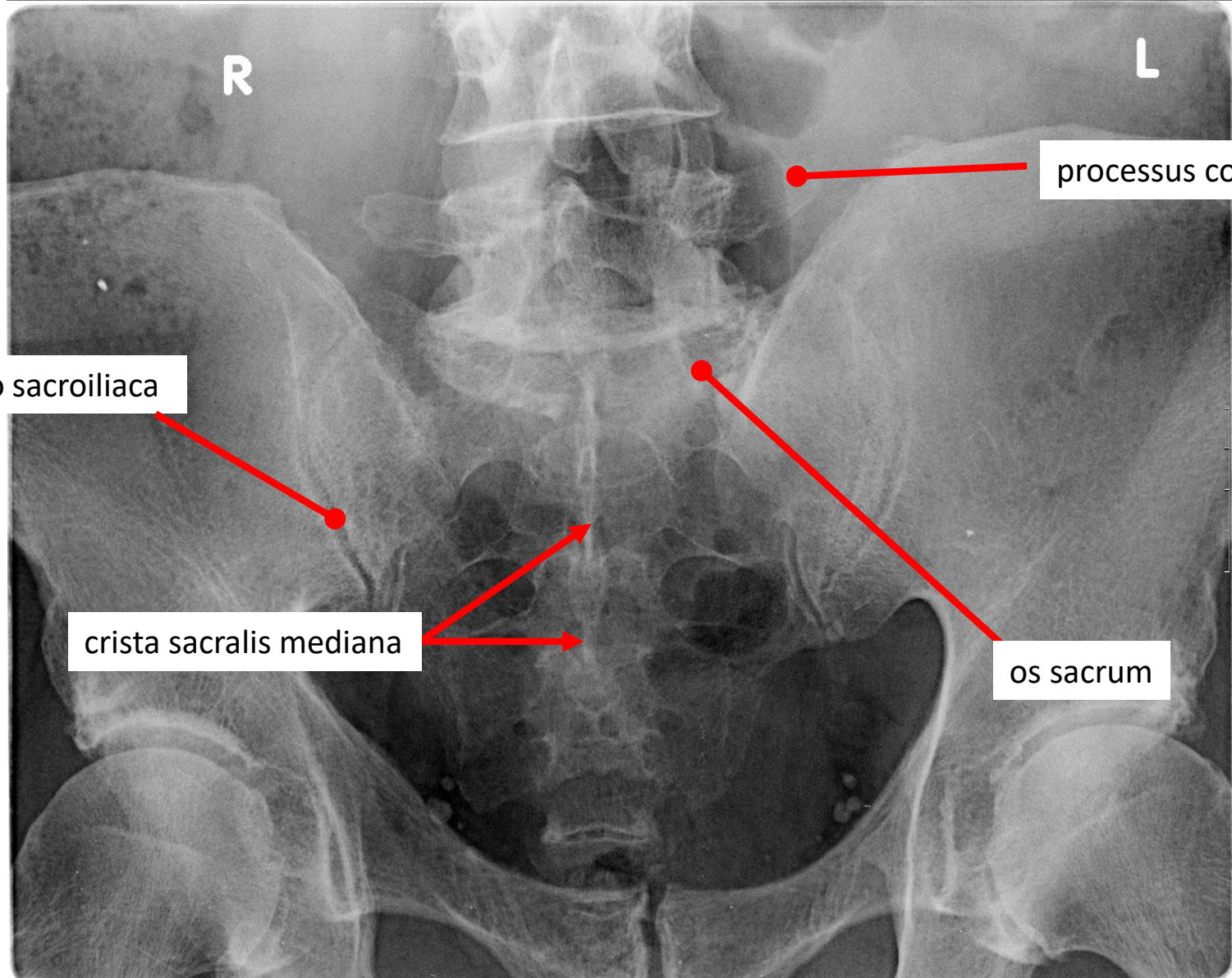
MRI bederní páteře, laterální pohled
MRI scan of the lumbar part of the vertebral column, lateral view

Vertebra lumbalis tertia (L3)

MRI bederní páteře, transverzální pohled
MRI scan of the lumbar part of the vertebral column, transverse view



RTG pánve, frontální pohled
X-ray picture of the pelvis, frontal view



Příčný řez v úrovni S1

MRI průřez křížovou kostí, transverzální pohled
MRI scan, cross-section of the sacrum, transverse view

