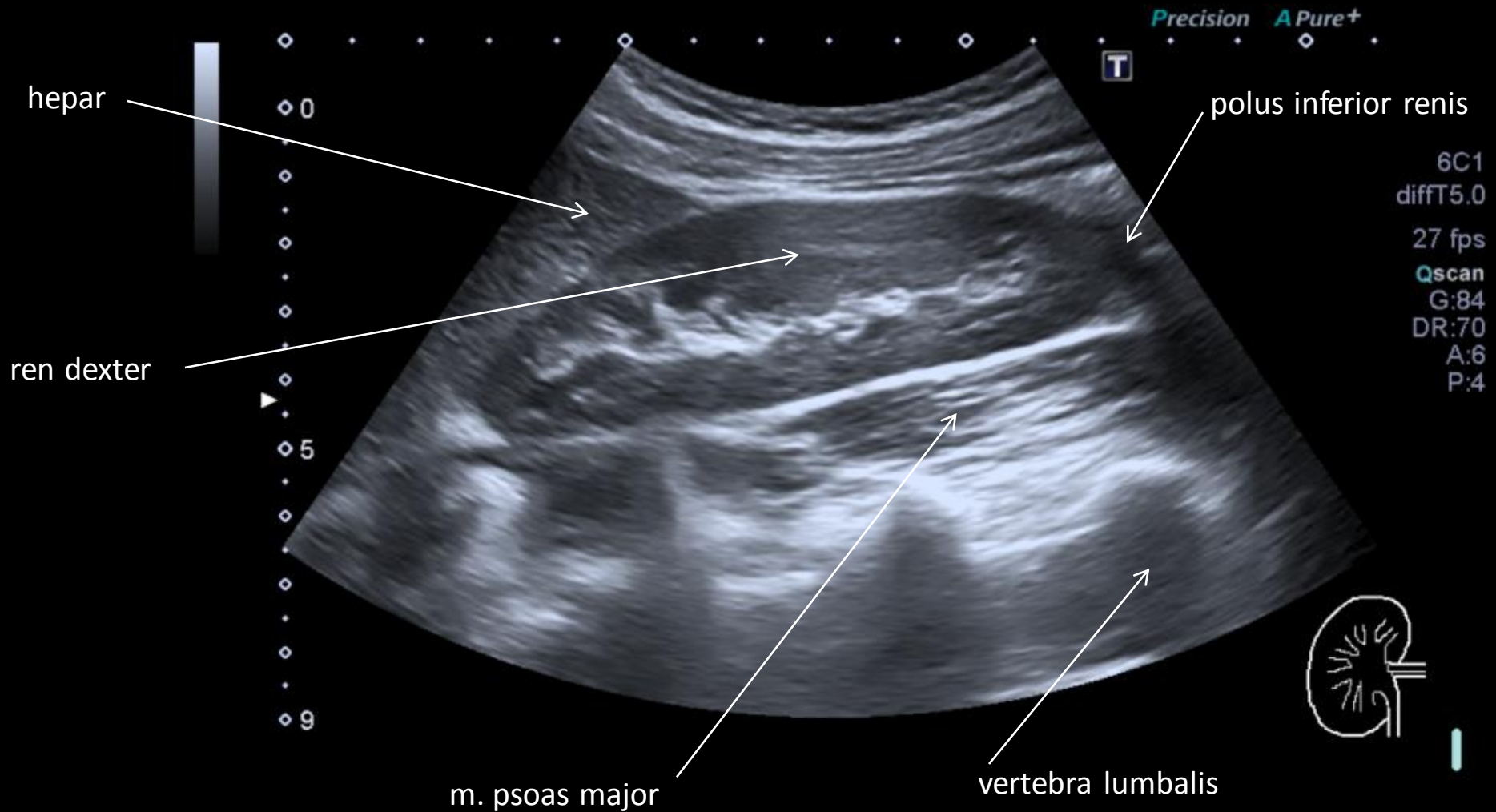


# **Močopohlavní soustava**

**Urogenital system**

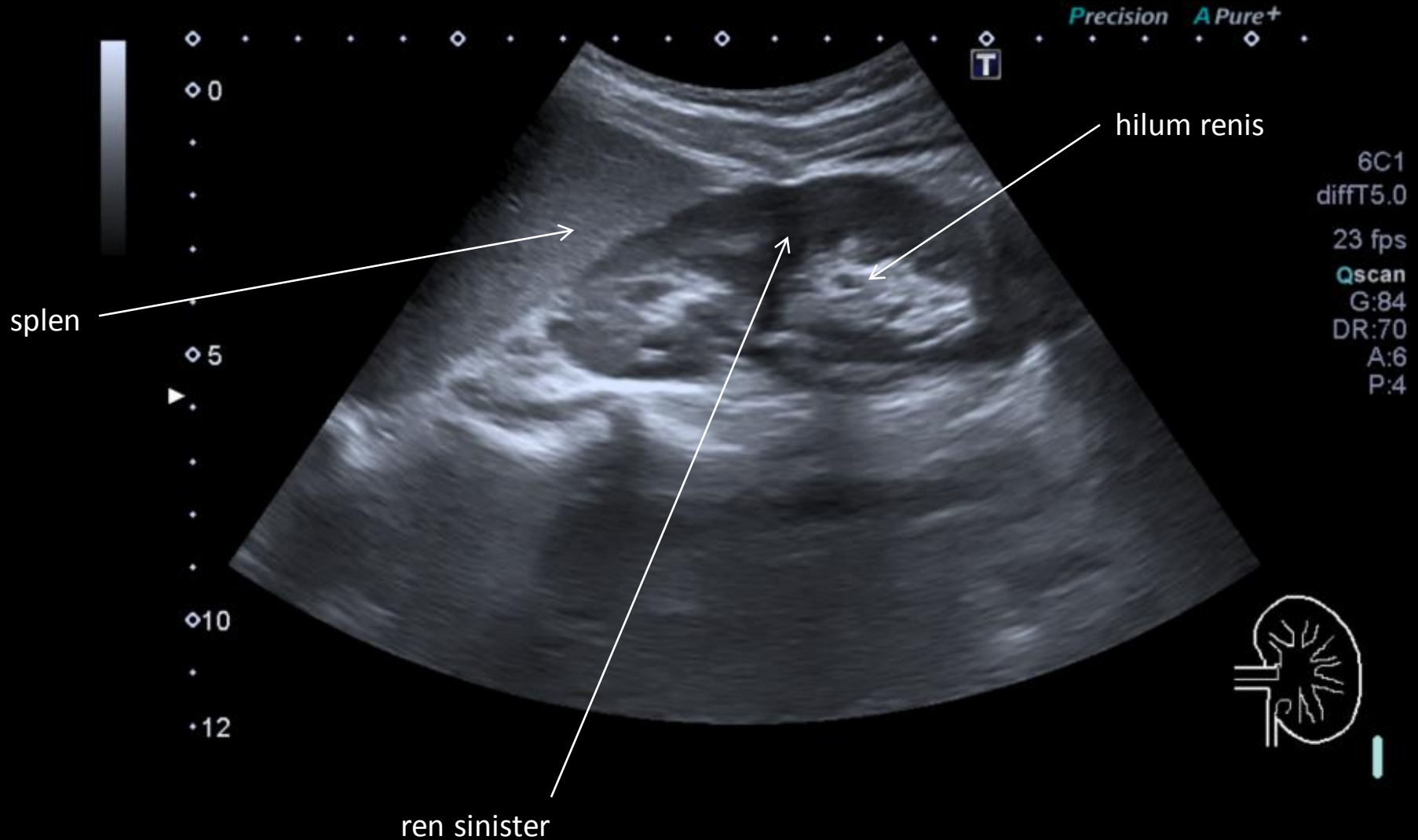
# Ultrazvukové vyšetření ledvin

## *Ultrasound examination of kidney*



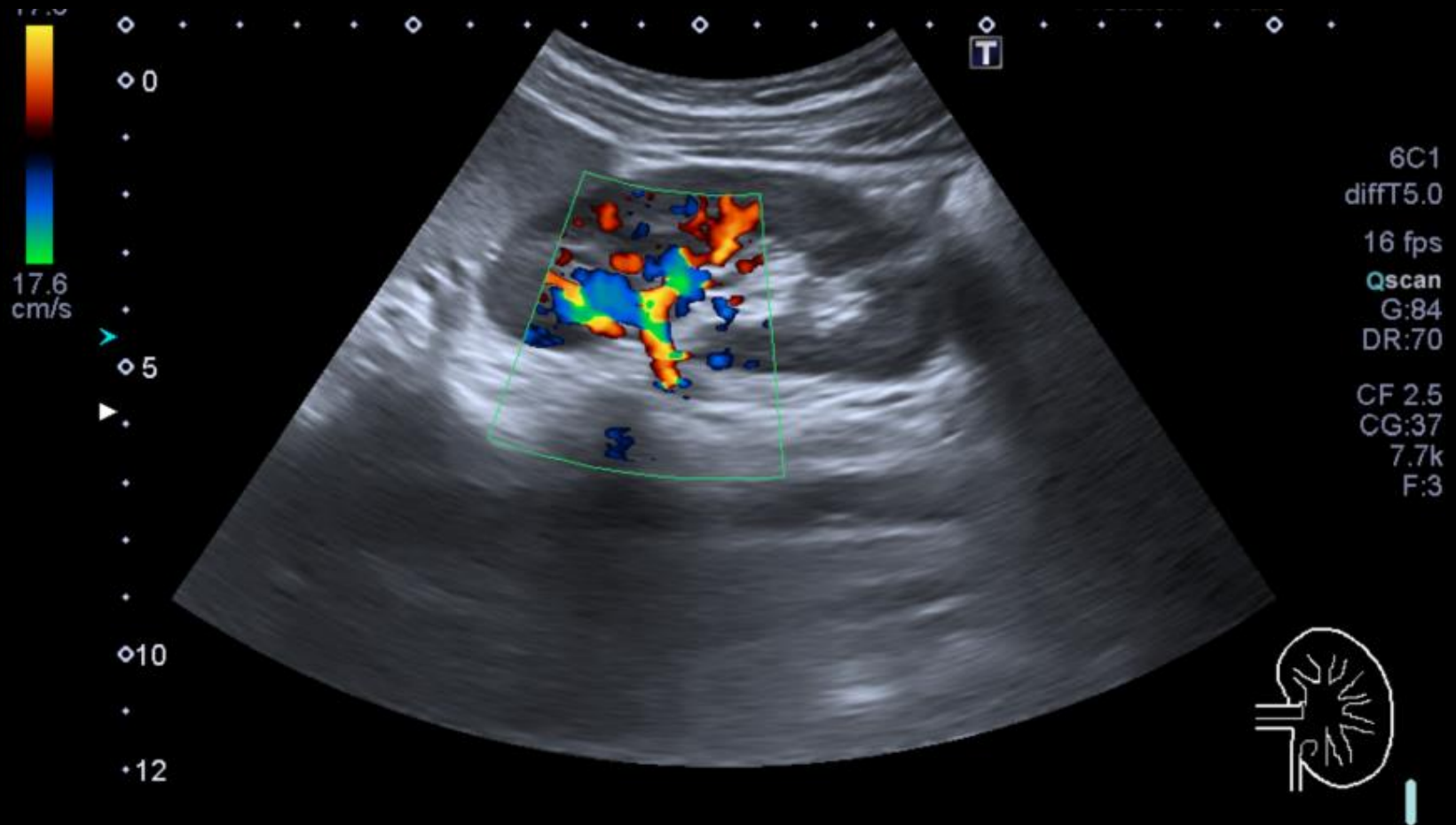
# Ultrazvukové vyšetření ledvin

## *Ultrasound examination of kidney*



# Dopplerovské ultrazvukové vyšetření ledvin

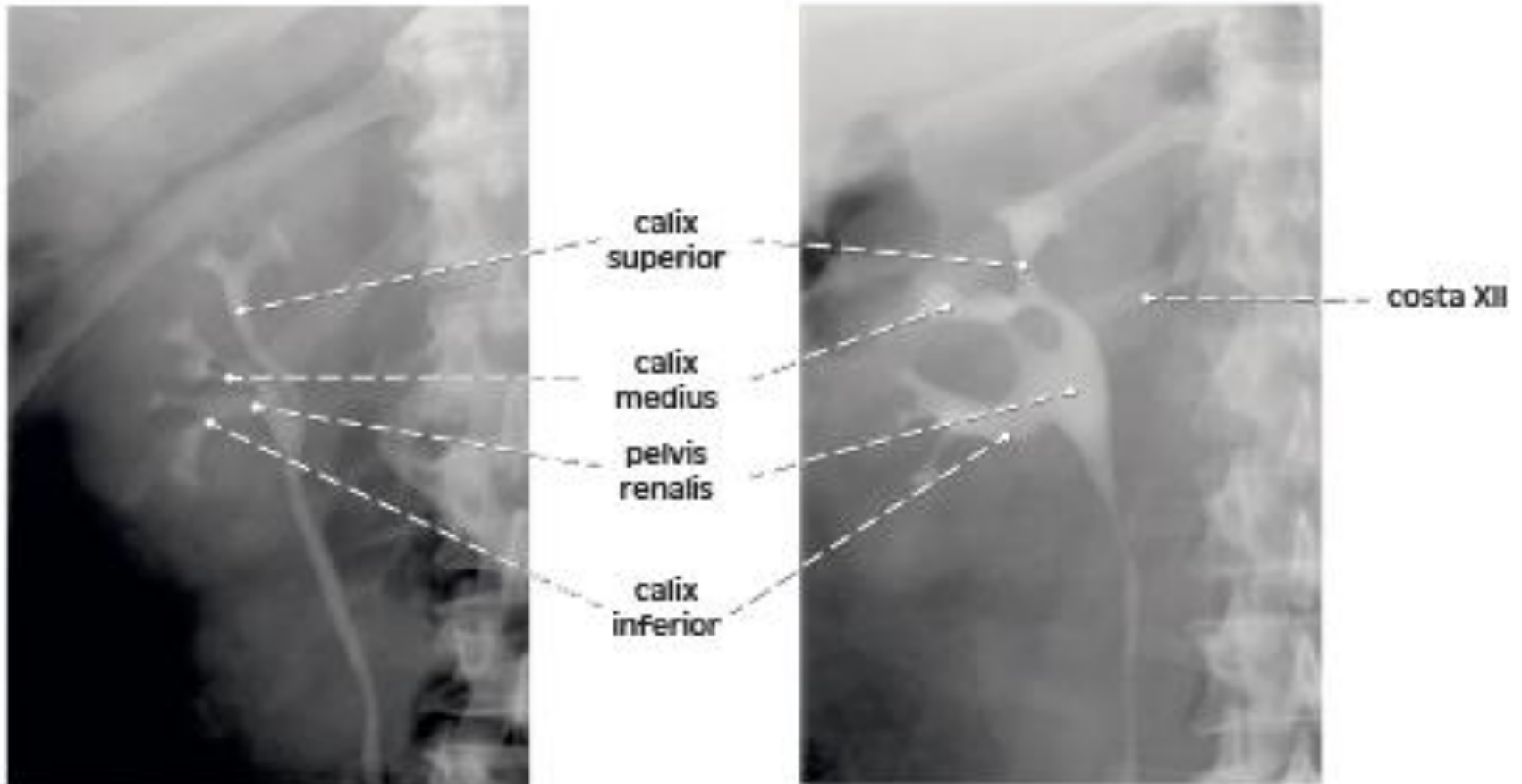
## *Ultrasound examination of kidney – Doppler's mode*



# Vylučovací urografie (s kontrastní látkou)

## Urography with contrast medium

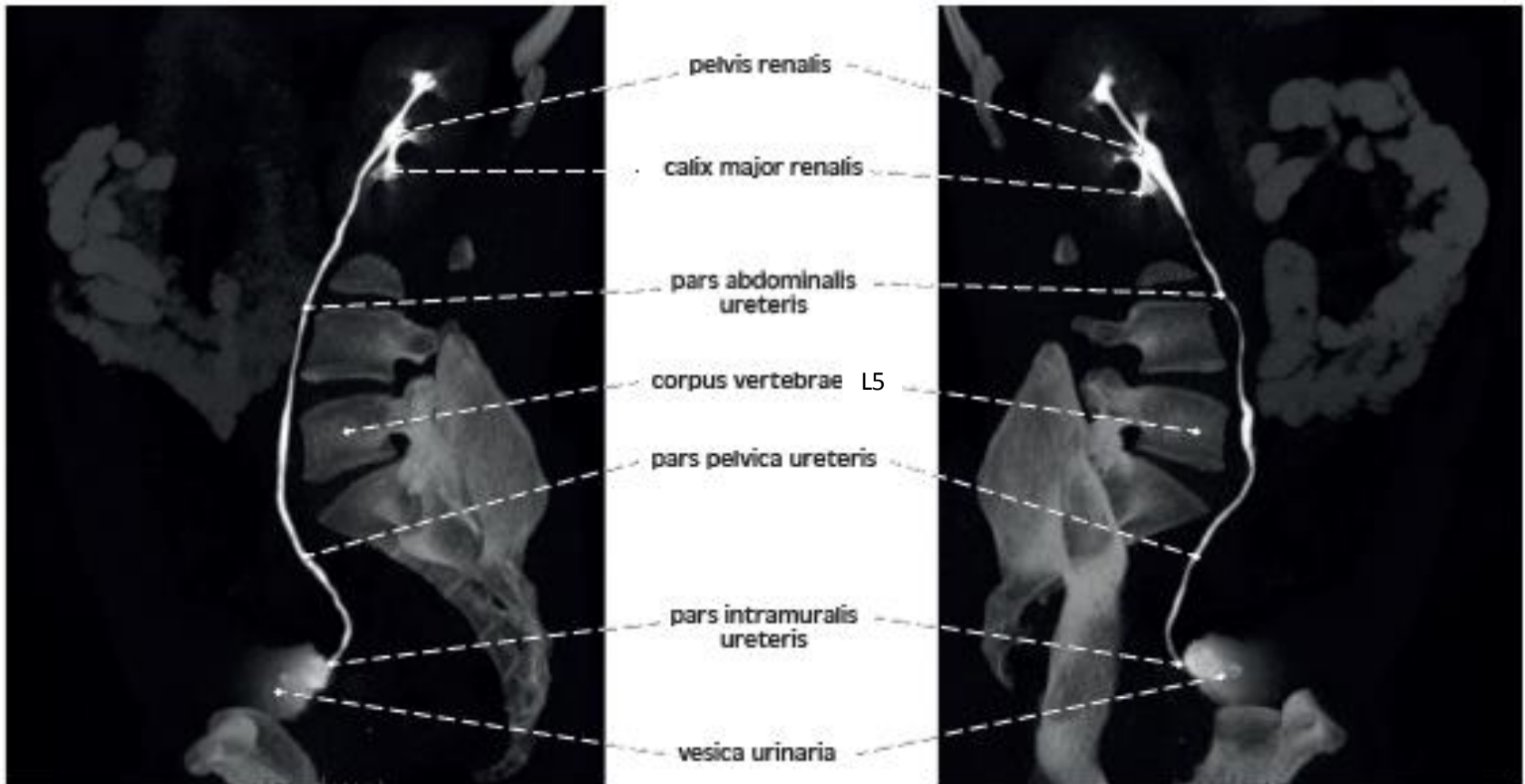
### *frontální řez / frontal section*



# Vylučovací MRI urografie (s kontrastní látkou)

## MRI urography with contrast medium

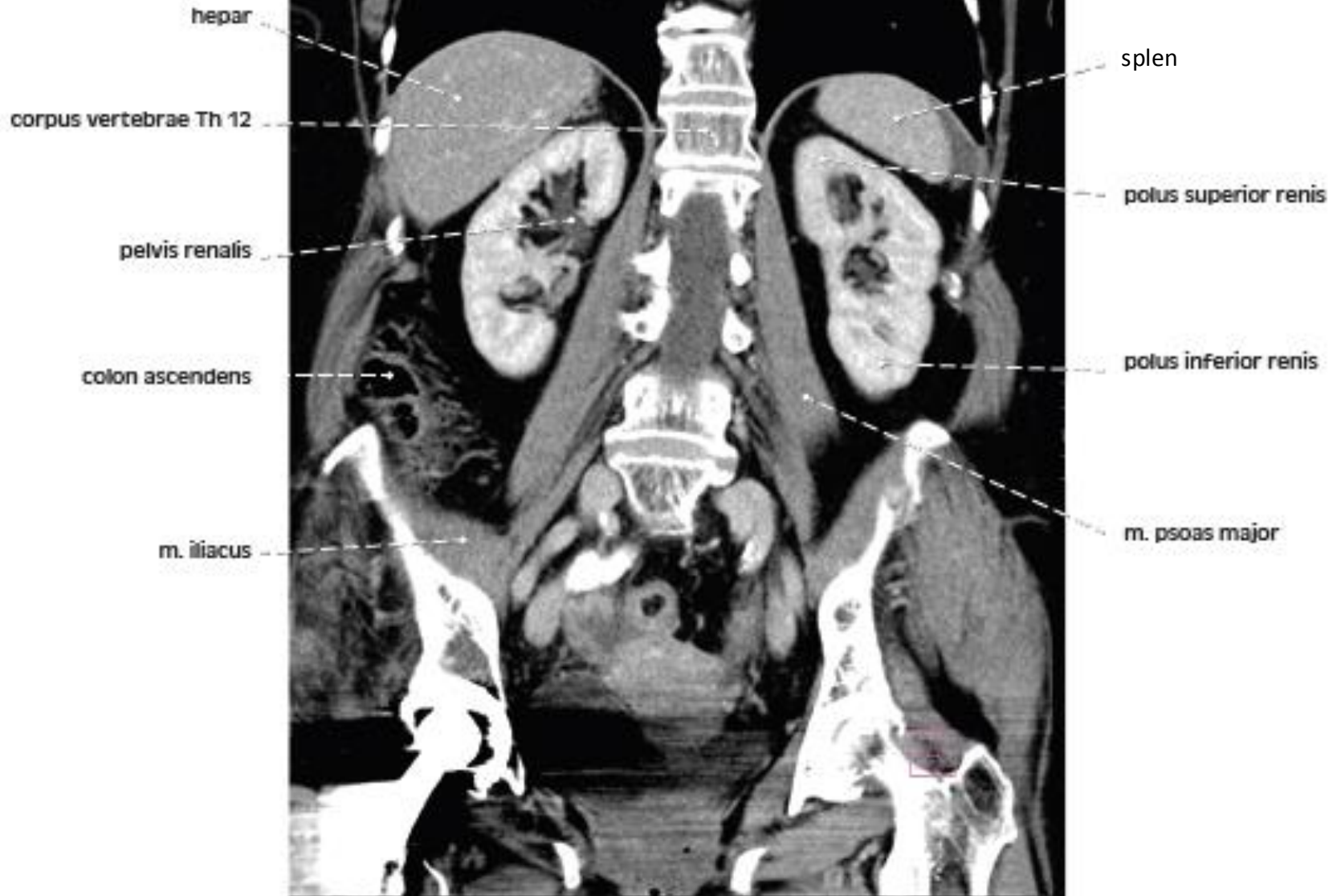
### *sagitální řez / sagittal section*



# CT břicha / CT of the abdomen

## *frontální řez / frontal section*

a



# Vylučovací MRI urografie (s kontrastní látkou)

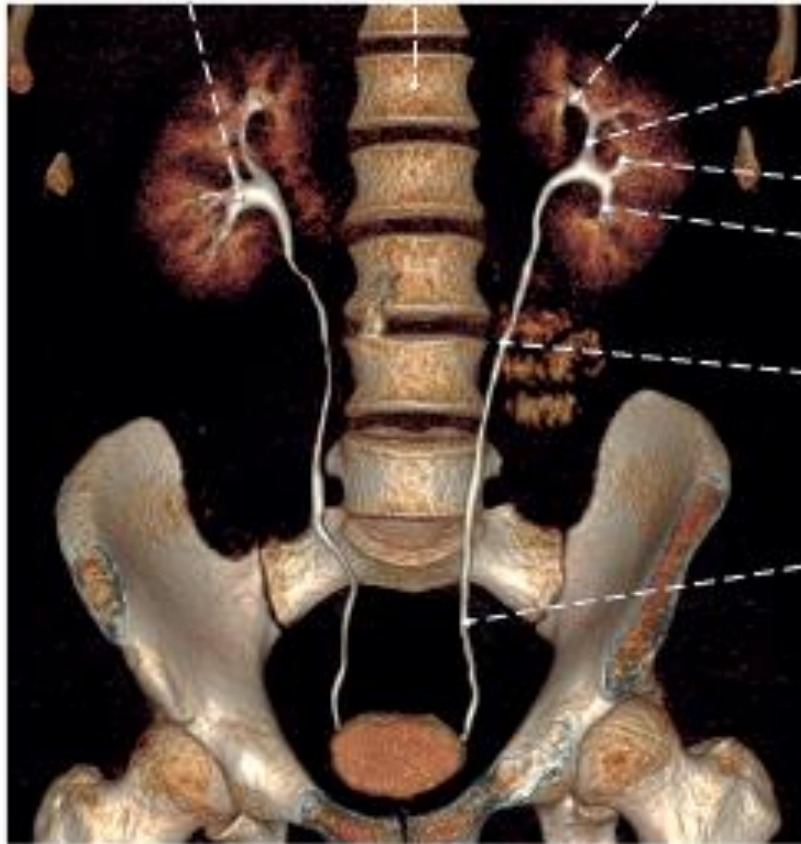
## MRI urography with contrast medium

### *frontální řez / frontal section*

a

b

calix inferior  
corpus vertebrae L1  
calix renalis minor



calix superior

pelvis renalis

calix medius

calix inferior

pars abdominalis  
ureteris

pars pelvica  
ureteris

pars intramuralis  
ureteris

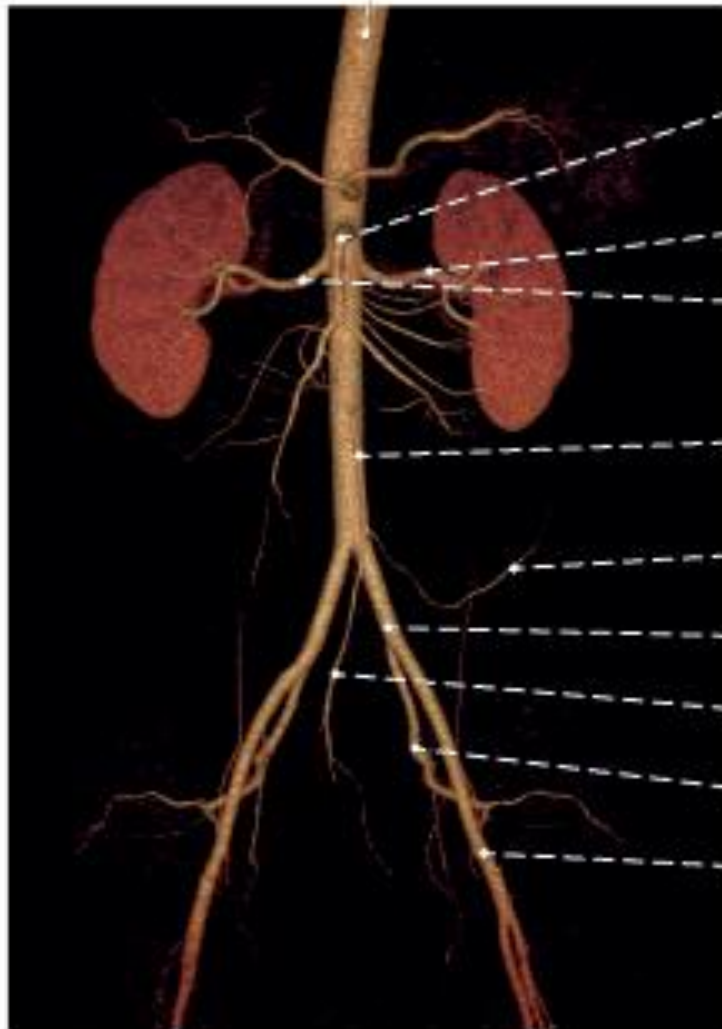




# CT angiografie břišní aorty – 3D rekonstrukce

## CT angiography of the aorta abdominalis – 3D reconstruction

truncus coeliacus



a. mesenterica superior

a. renalis sin.

a. renalis dx.

a. mesenterica inferior

a. sigmoidea

a. iliaca communis

a. rectalis superior

a. iliaca interna

a. iliaca externa

**frontální řez / frontal section**

a. splenica



truncus coeliacus

a. mesenterica superior

a. mesenterica inferior

a. iliaca interna

a. epigastrica inferior

a. iliaca externa

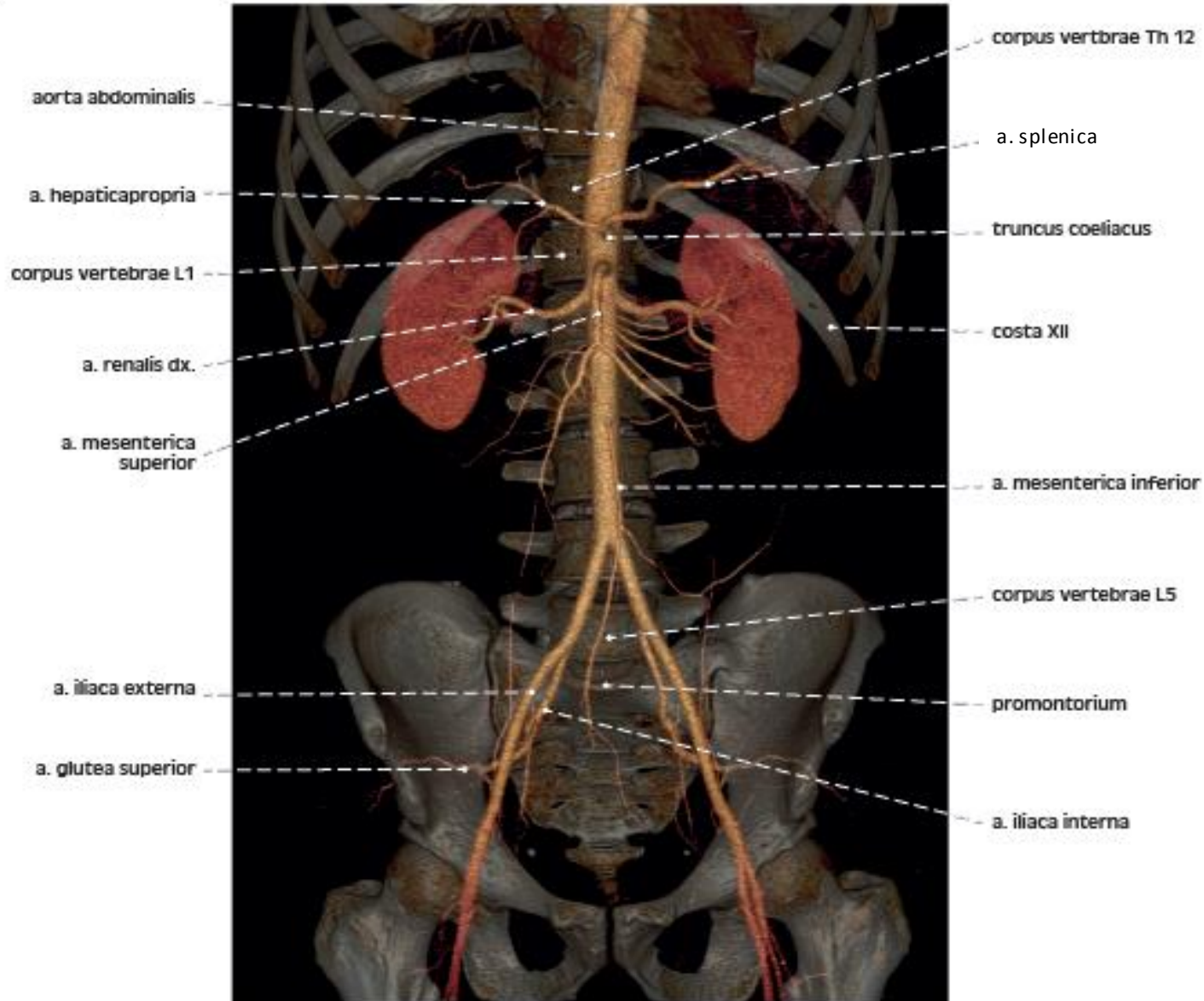
**sagitální řez / sagittal section**

# CT angiografie břišní aorty – 3D rekonstrukce

## CT angiography of the aorta abdominalis – 3D reconstruction

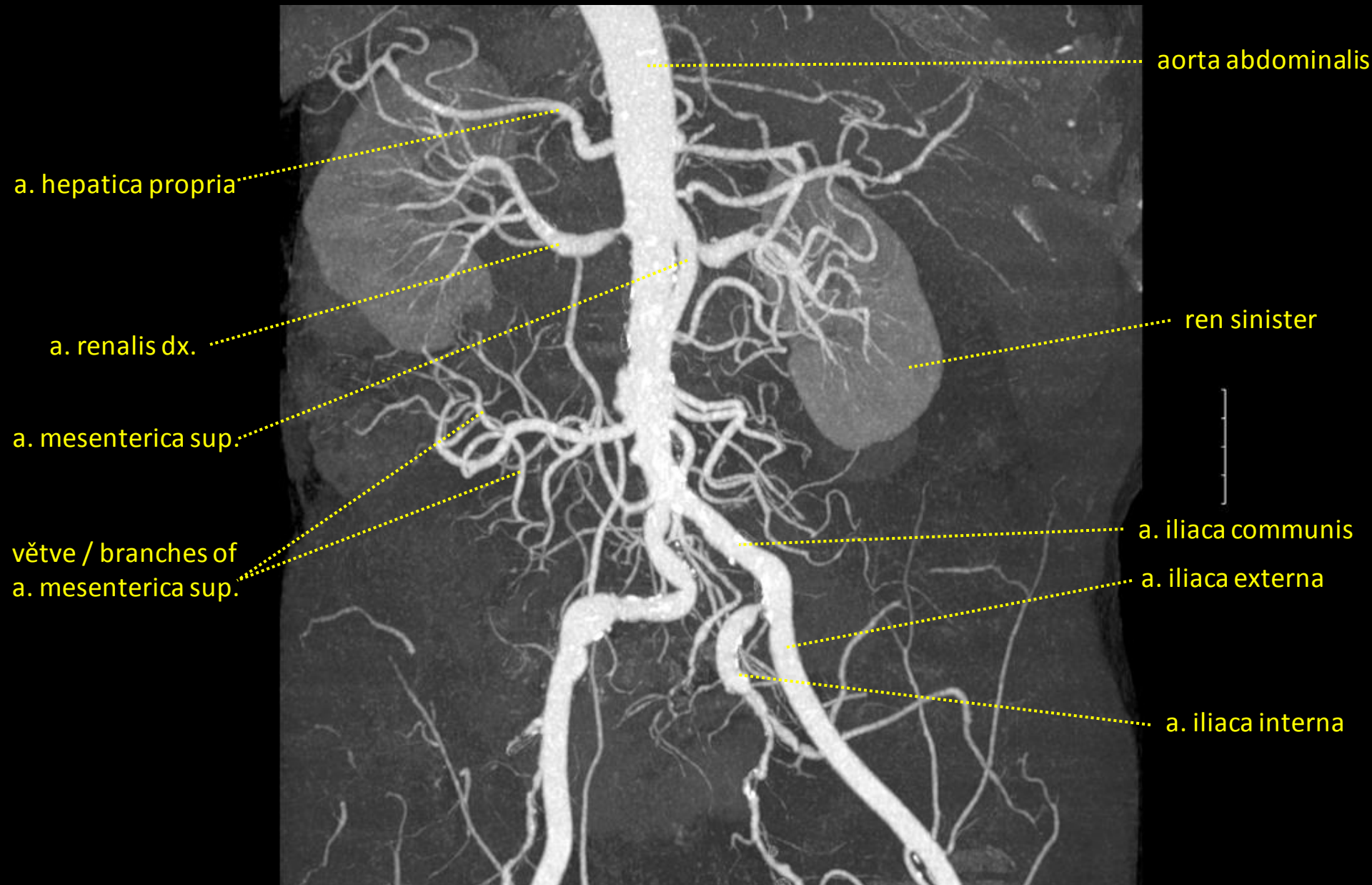
### *frontální řez / frontal section*

a



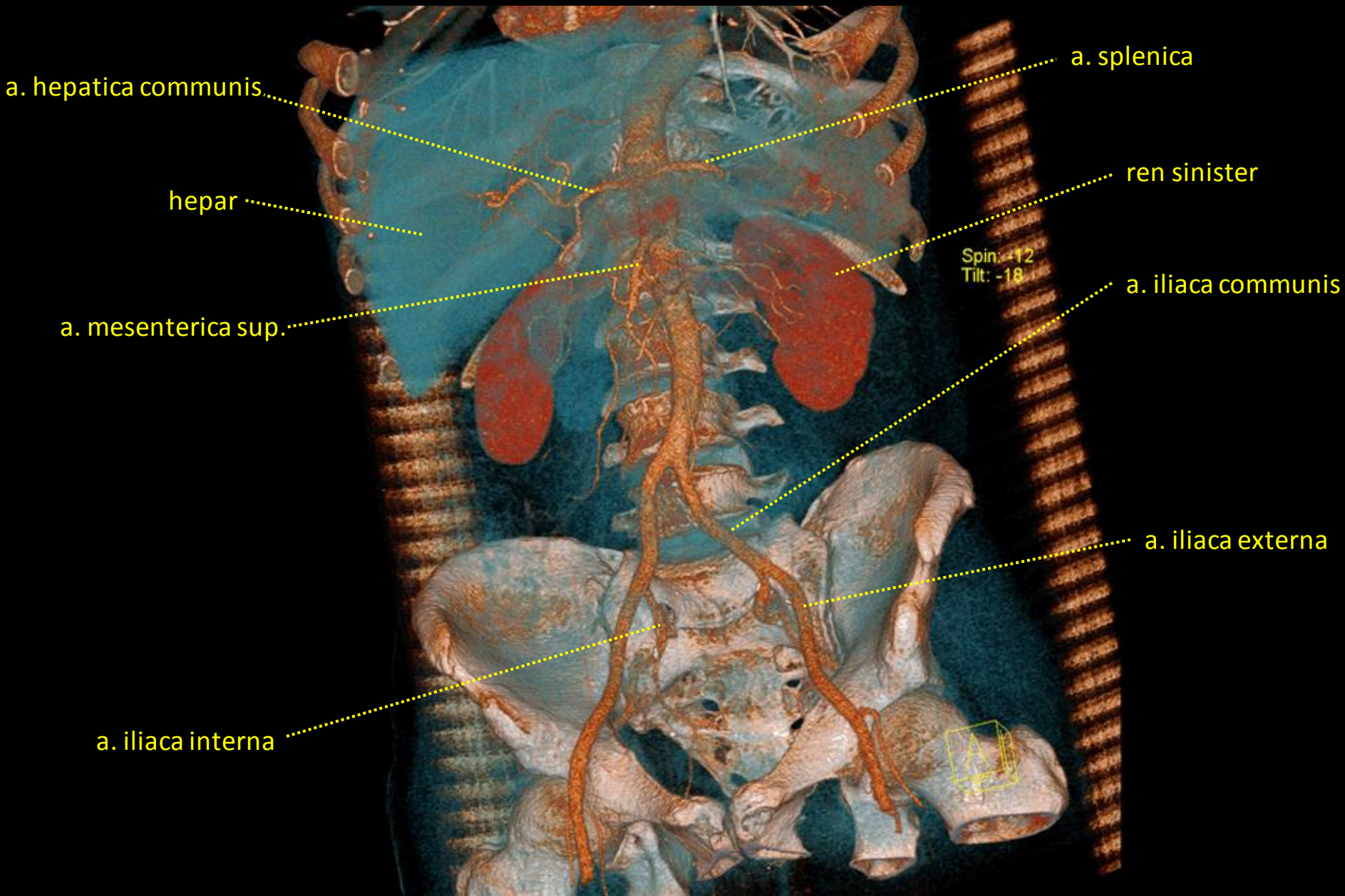
# CT angiografie břišní aorty – 3D rekonstrukce

## CT angiography of the aorta abdominalis – 3D reconstruction



# CT angiografie břišní aorty – 3D rekonstrukce

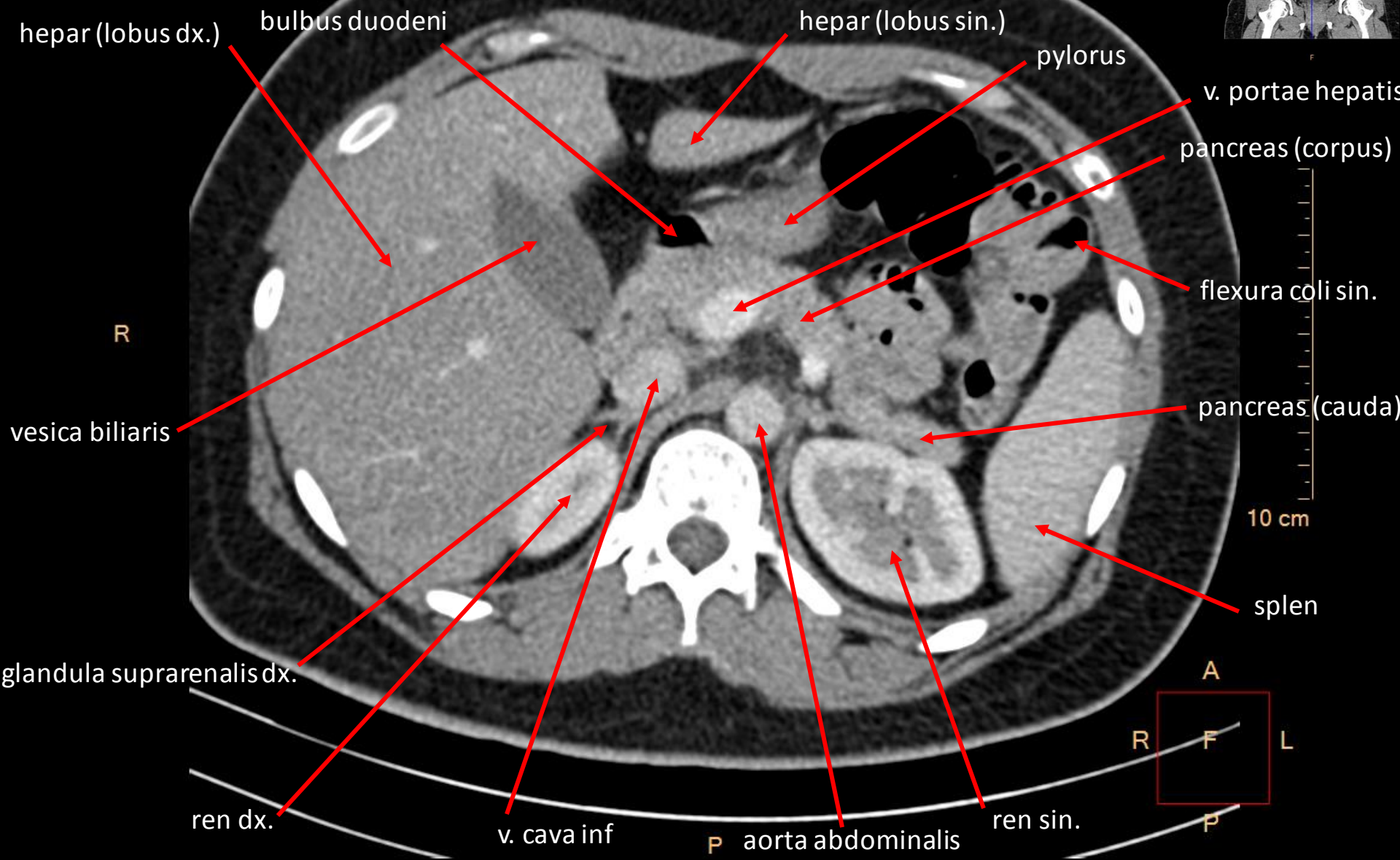
## CT angiography of the aorta abdominalis – 3D reconstruction



# CT břicha s kontrastní látkou ve střevech

## CT of the abdomen with contrast fluid in the intestine

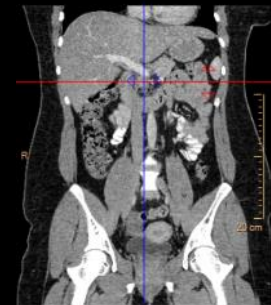
### *transverzální řez / transverse section*



# CT břicha s kontrastní látkou ve střevech

## CT of the abdomen with contrast fluid in the intestine

### *transverzální řez / transverse section*



# CT břicha s kontrastní látkou ve střevech

## CT of the abdomen with contrast fluid in the intestine

### transverzální řez / transverse section



hepar (lobus dx.)

colon transversum

pancreas

v. mesenterica sup.

flexura coli dextra

a. mesenterica sup.

R

v. renalis sin.

jejunum

colon

descendens

10 cm

pars descendens duodeni

ren dx.

ren sin.

R

F

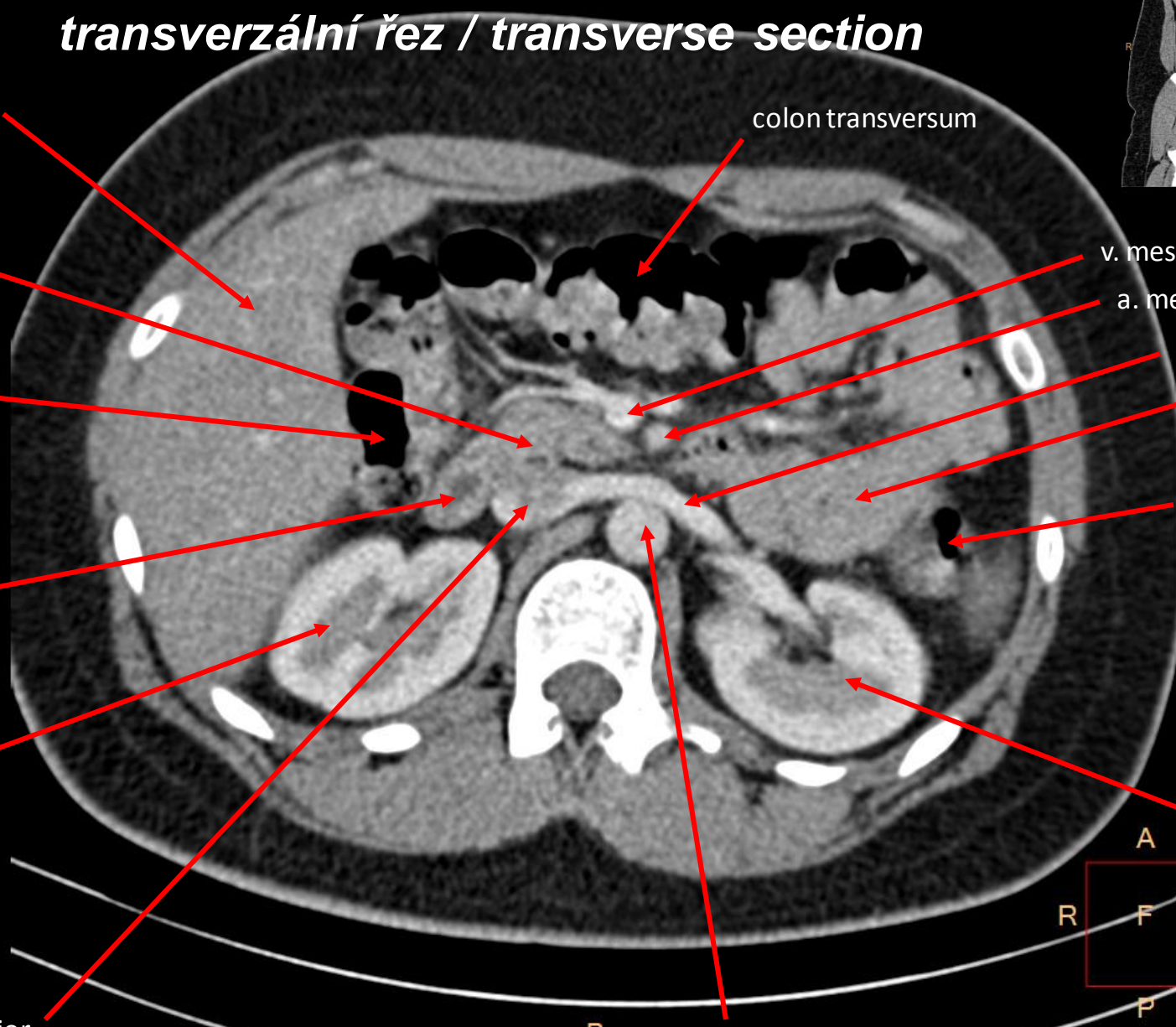
L

v. cava inferior

P

aorta abdominalis

P



# CT břicha s kontrastní látkou ve střevech

## CT of the abdomen with contrast fluid in the intestine

*transverzální řez / transverse section*

colon ascendens

R

ren dx.

v. cava inferior

m. psoas major

P

aorta abdominalis



intestinum tenue

10 cm

colon descendens

ren sin.

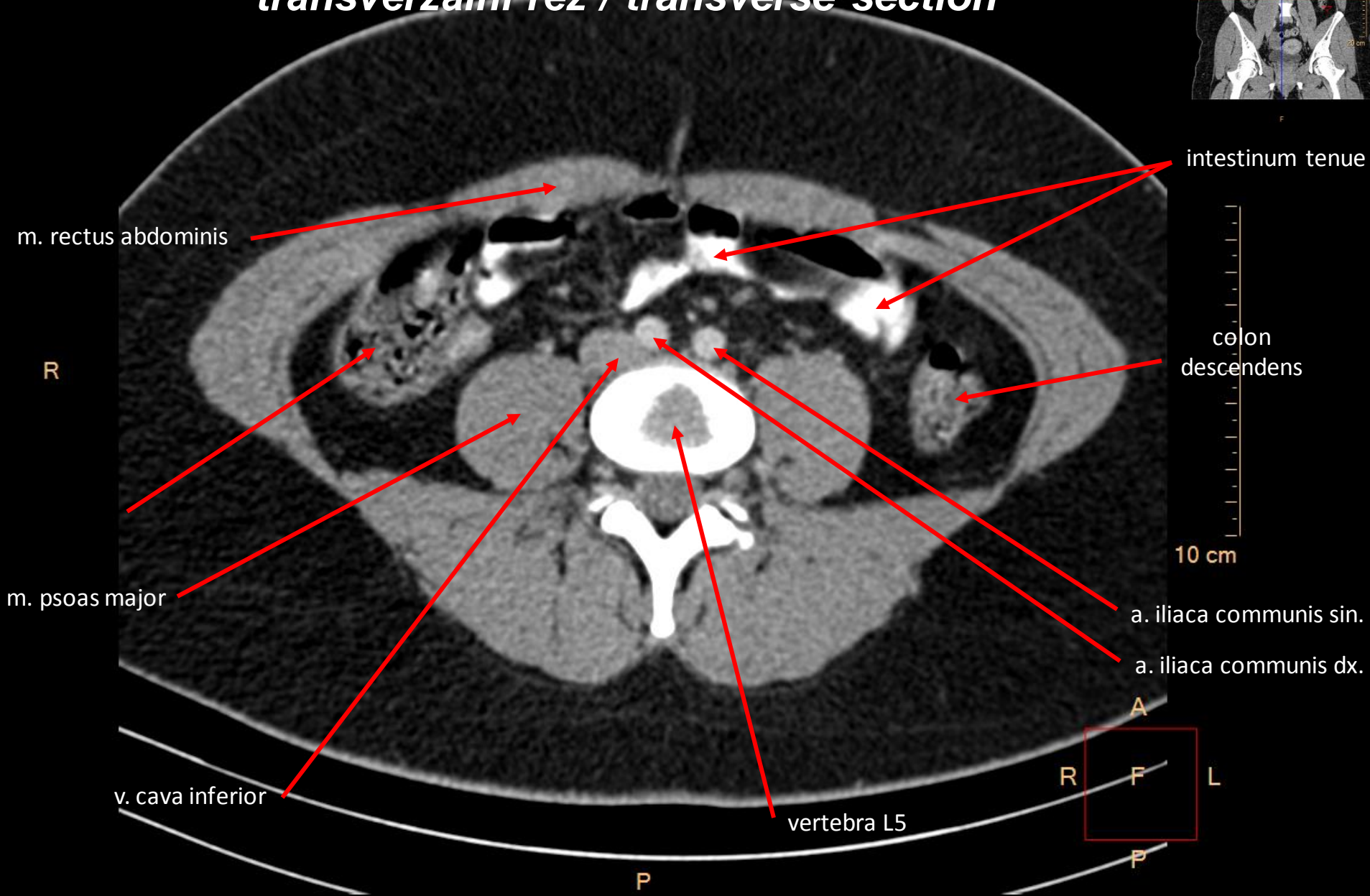




# CT břicha s kontrastní látkou ve střevech

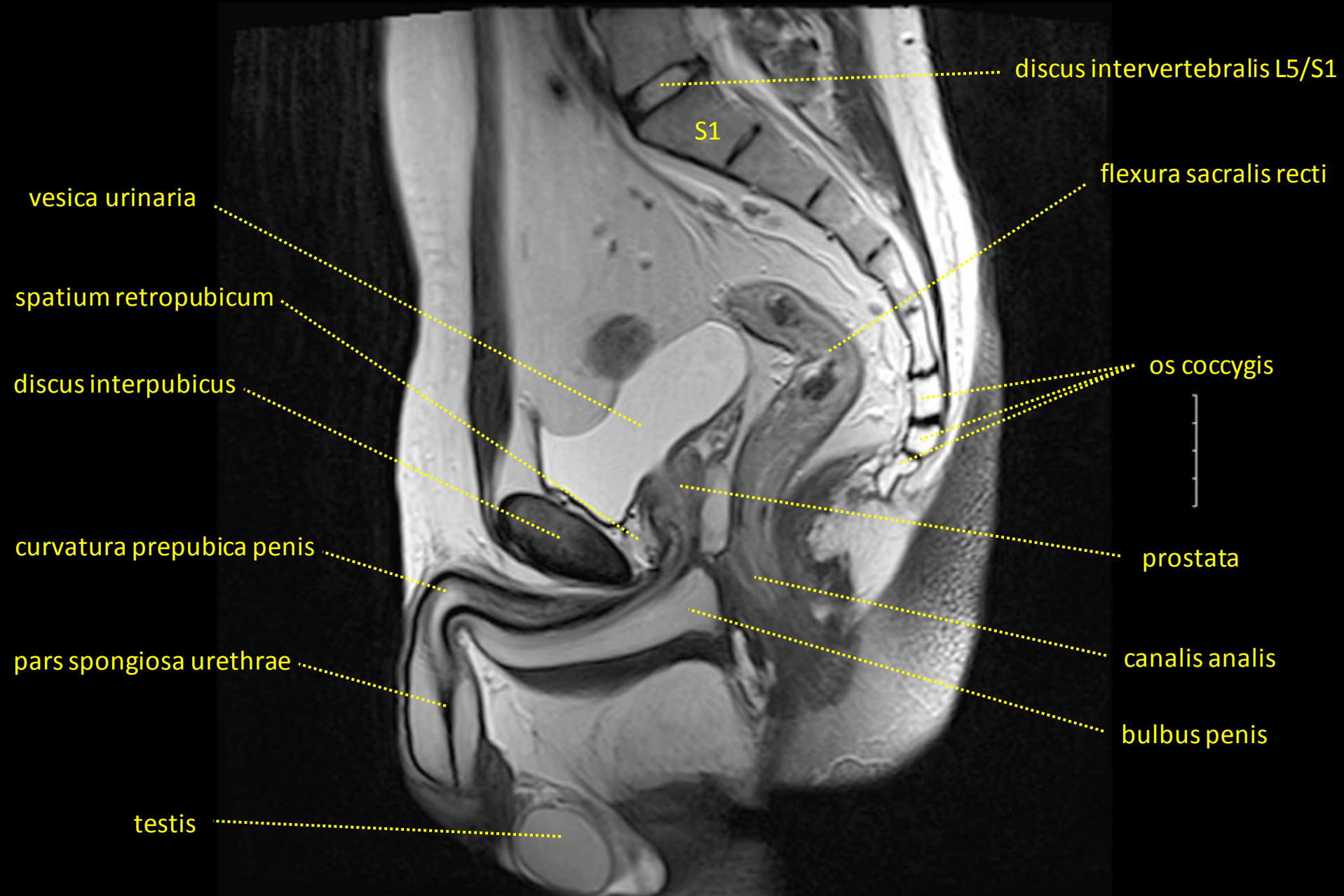
## CT of the abdomen with contrast fluid in the intestine

### transverzální řez / transverse section



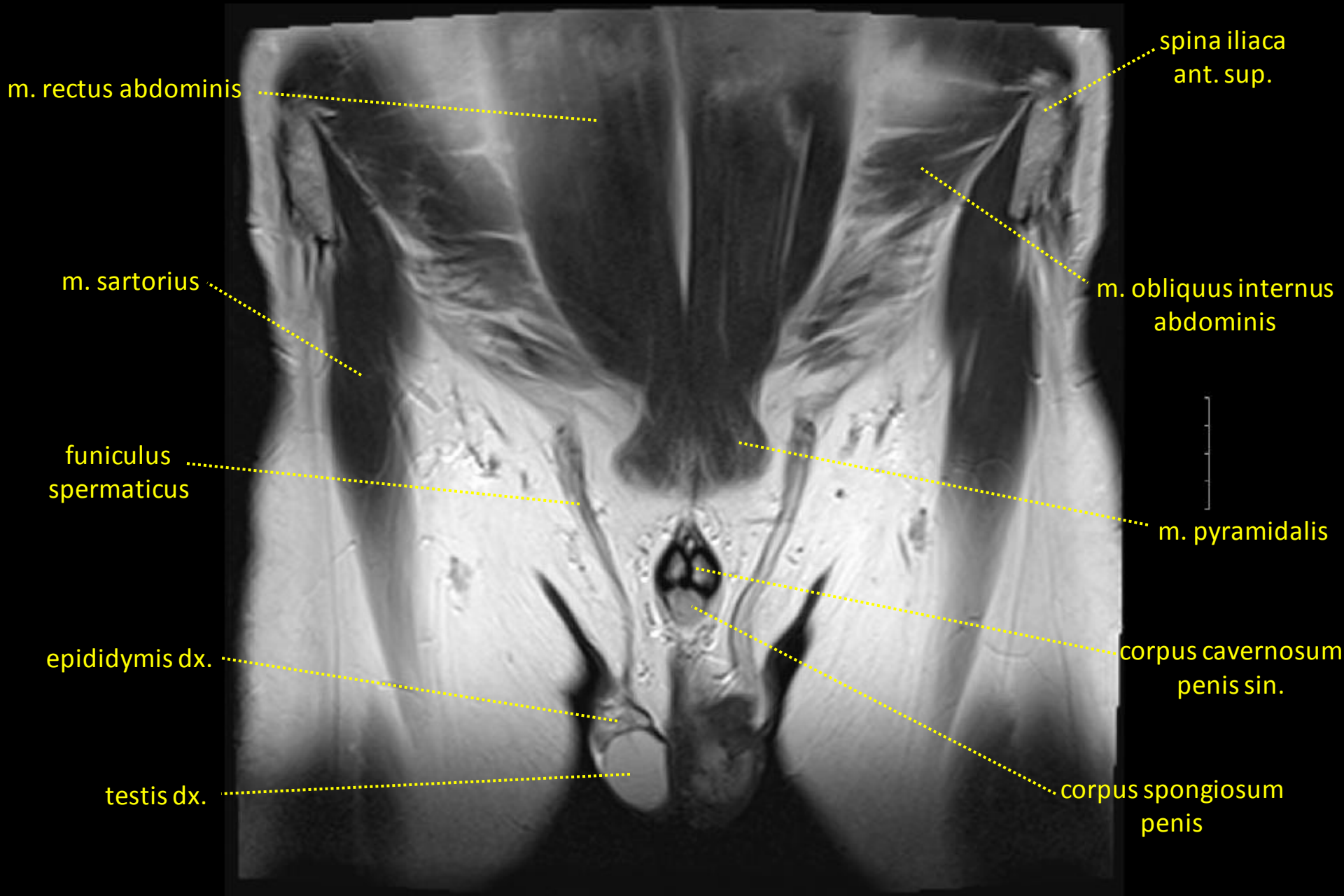
# MR mužské pánve / MRI of the male pelvis

## mediánní řez / median section



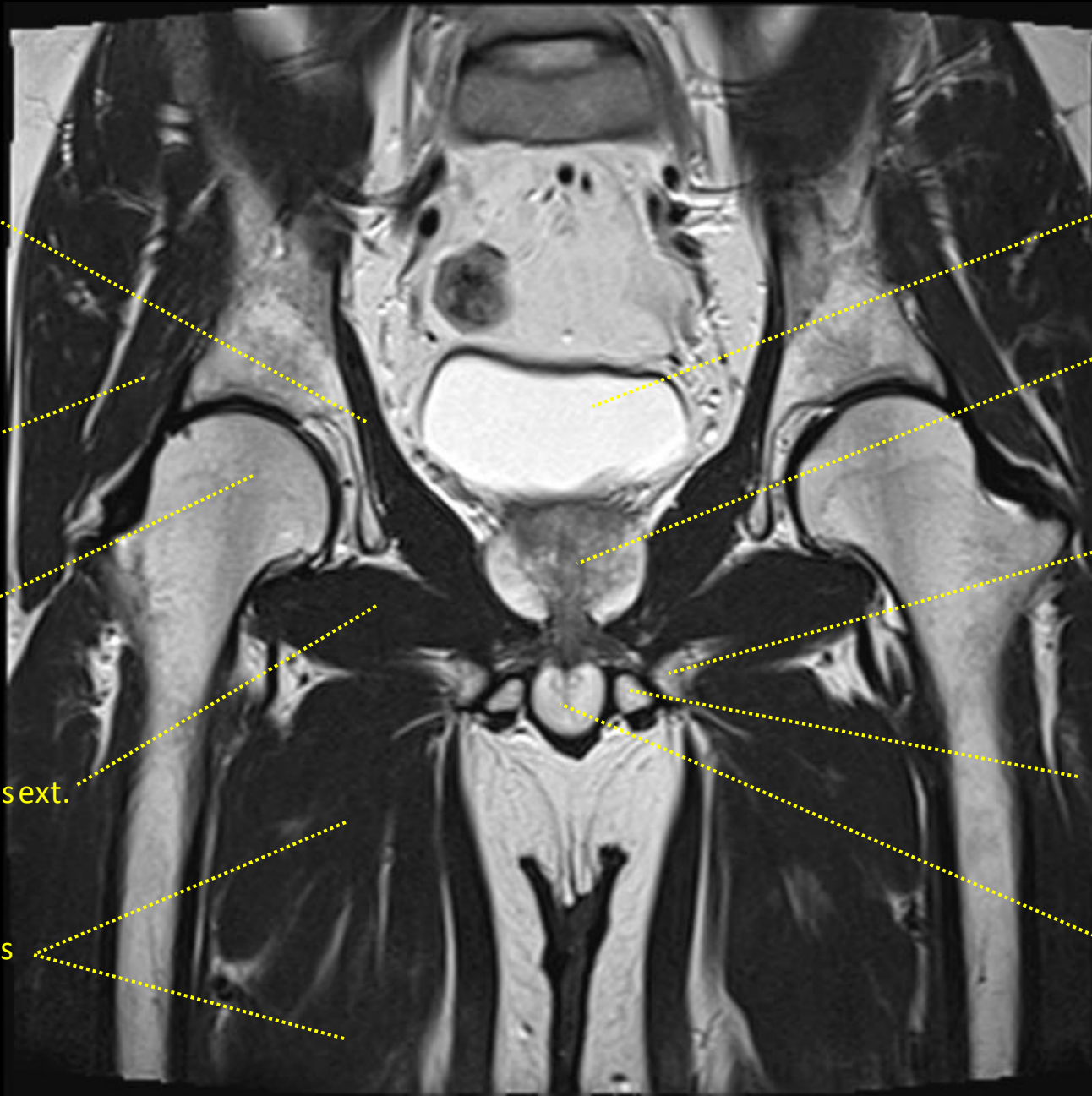
# MR mužské pánve / MRI of the male pelvis

## frontální řez / frontal section



# MR mužské pánve / MRI of the male pelvis

## frontální řez / frontal section



m. levator ani

vesica urinaria

m. gluteus minimus

prostata

ramus inferior  
ossis pubis

caput femoris

corpus cavernosum  
penis sin.

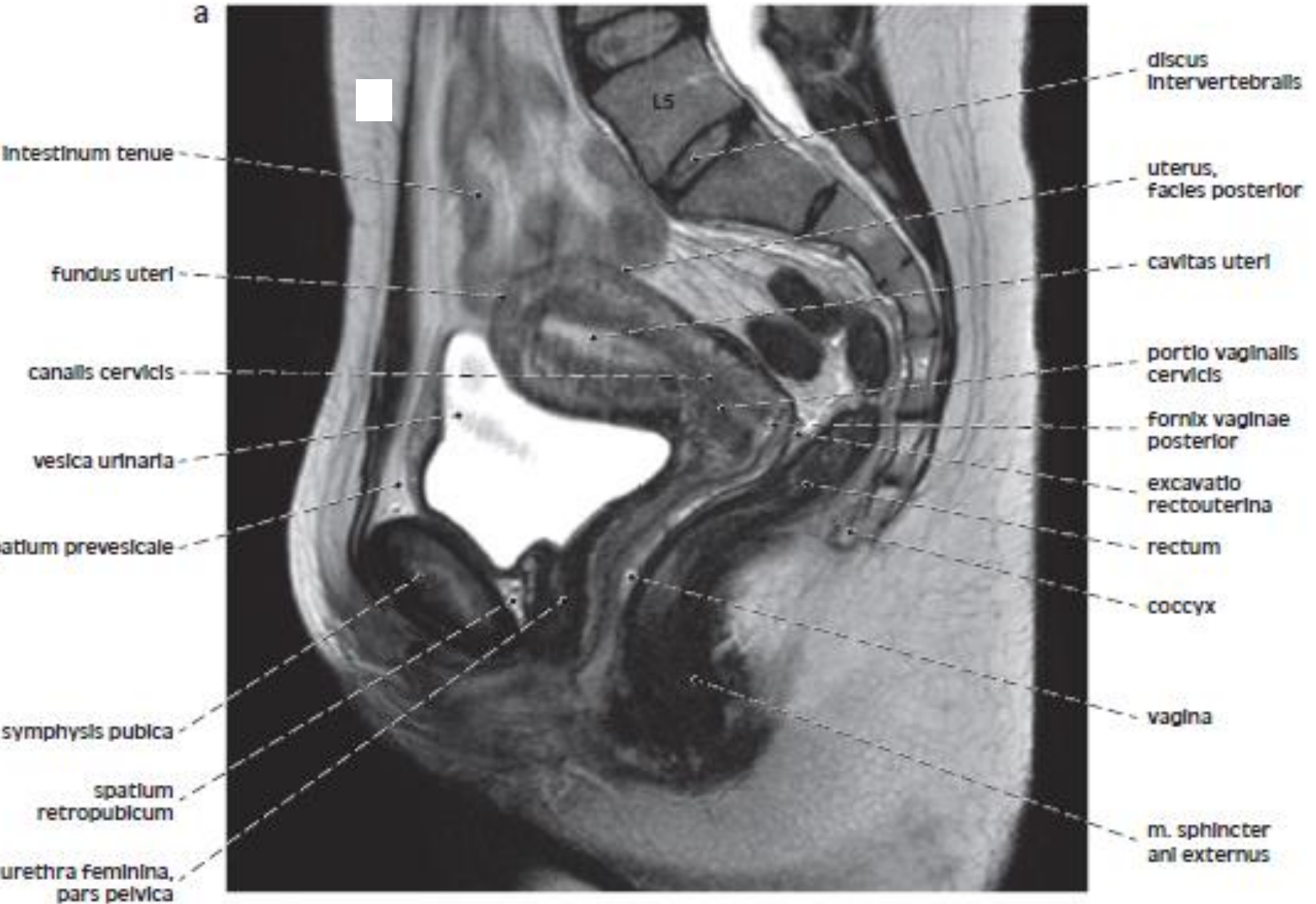
m. obturatorius ext.

bulbus penis

mm. adductores

# MR ženské pánve / MRI of the female pelvis

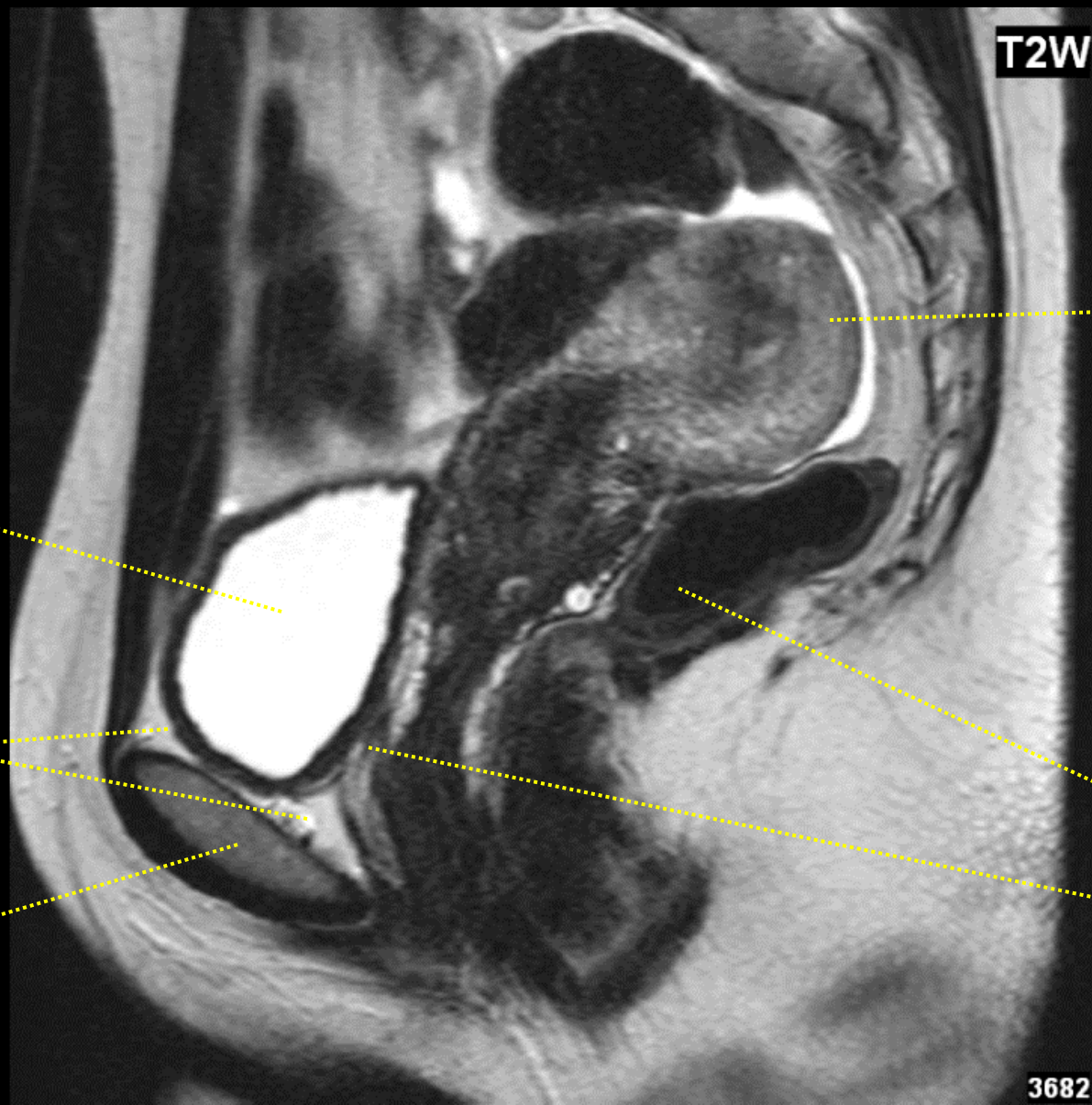
## mediánní řez / median section



# MR ženské pánve / MRI of the female pelvis

## mediánní řez / median section

### Retroverze + retroflexe dělohy / Retroversion + retroflexion of uterus



T2W

fundus uteri

vesica urinaria

spatium  
retropubicum

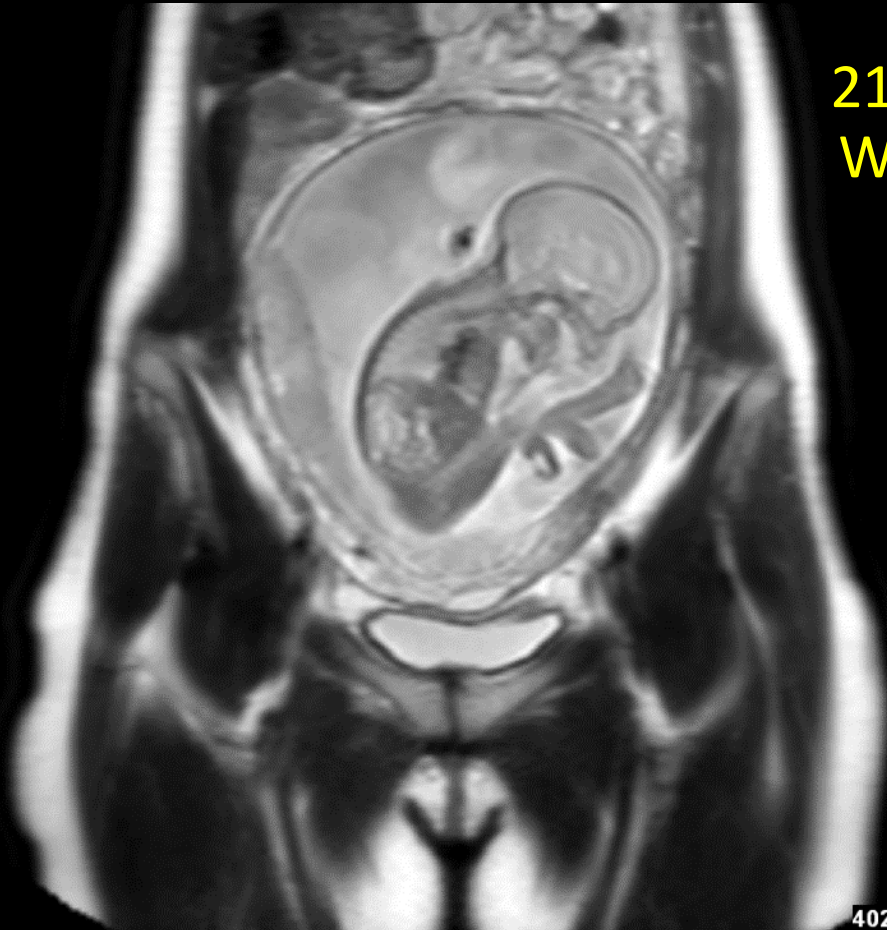
rectum

vagina

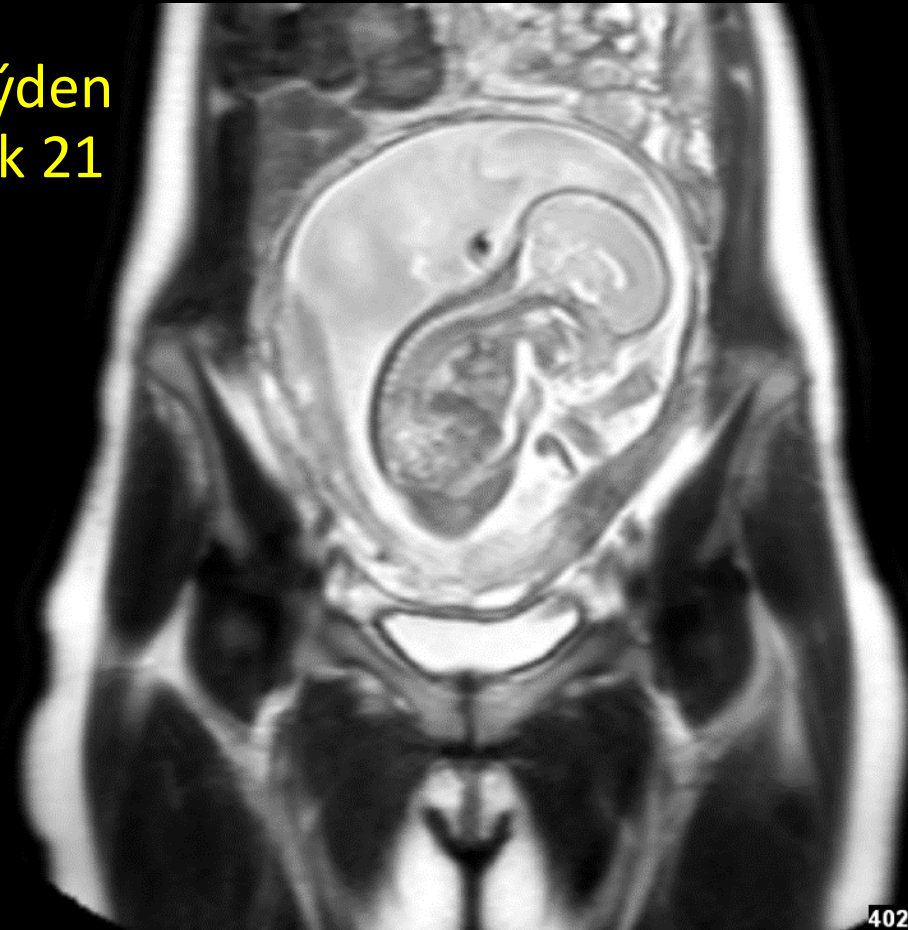
symphysis pubica

3682

**MR ženské pánve v těhotenství**  
**MRI of the female pelvis in pregnancy**  
*frontální řez / frontal section*



21. týden  
Week 21



# MR ženské pánve v těhotenství

## MRI of the female pelvis in pregnancy

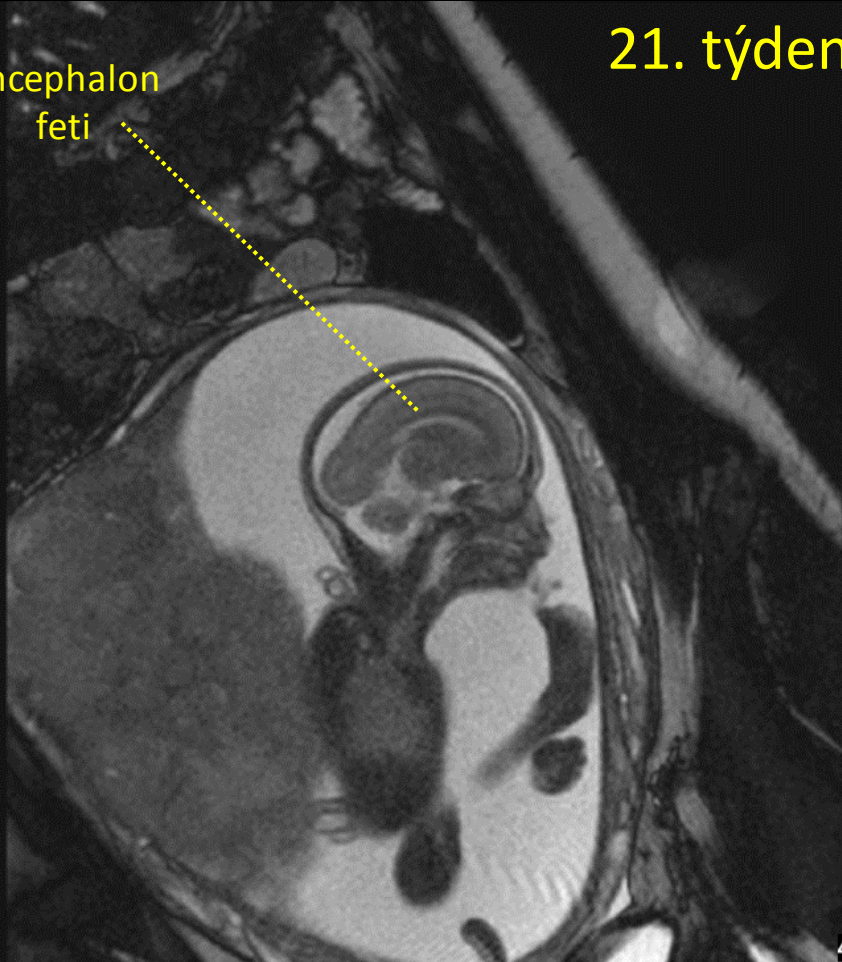
*sagitální řez / sagittal section*

*příčný řez / transverse section*

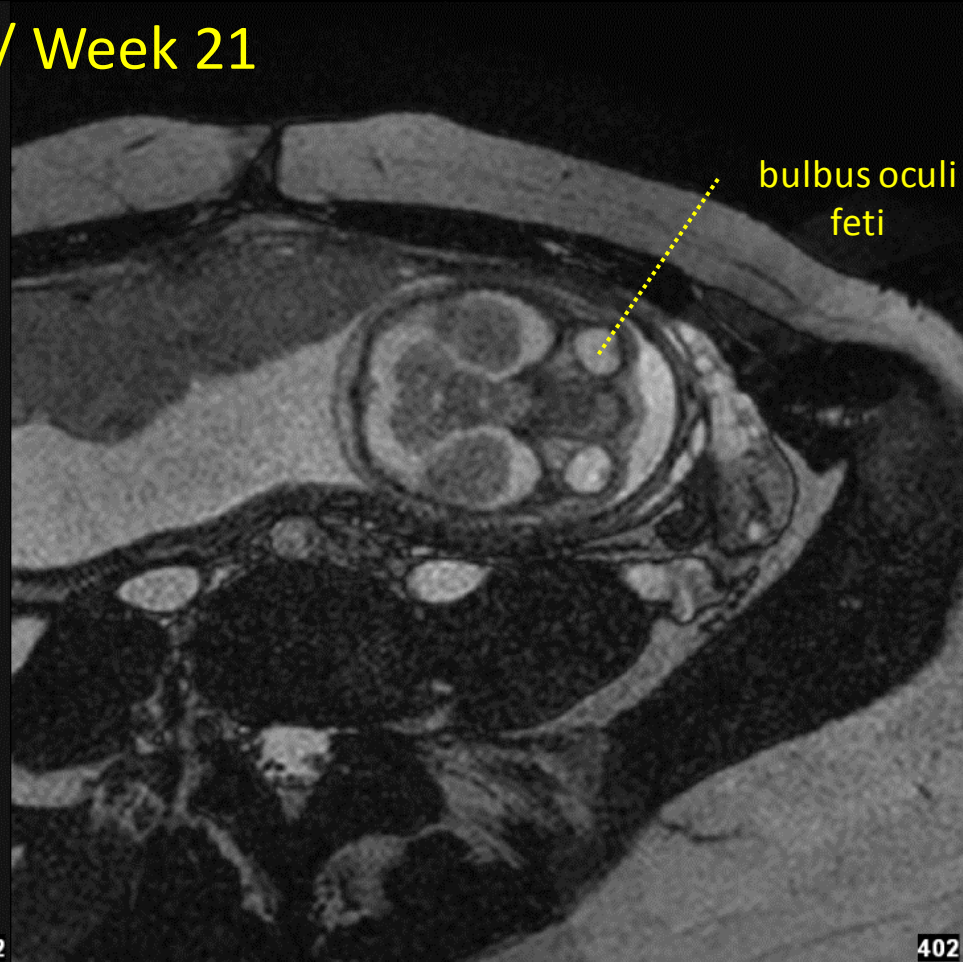
21. týden / Week 21

encephalon  
feti

bulbus oculi  
feti



402



402



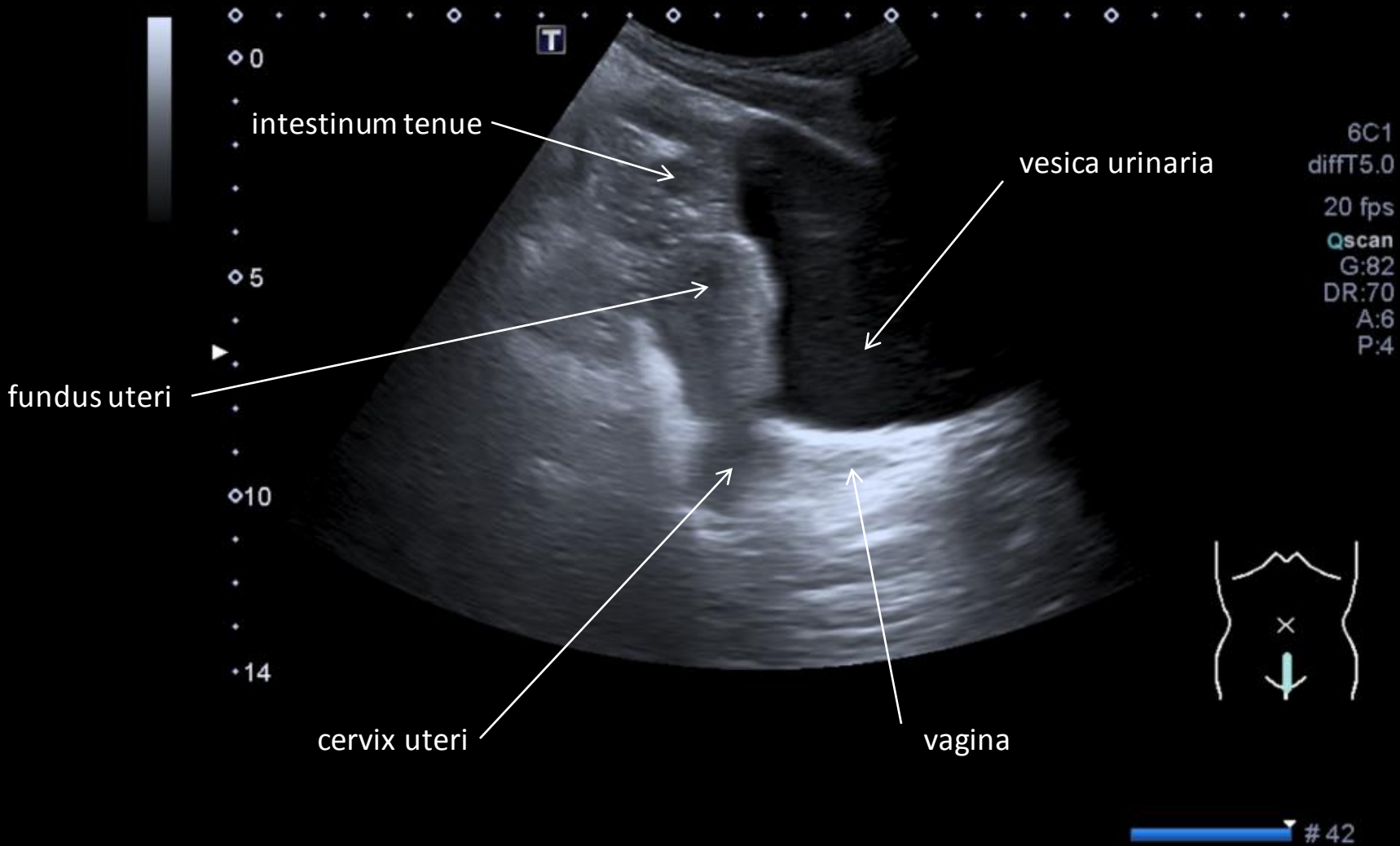
# Ultrazvukové vyšetření močového měchýře

## *Ultrasound examination of the urinary bladder*



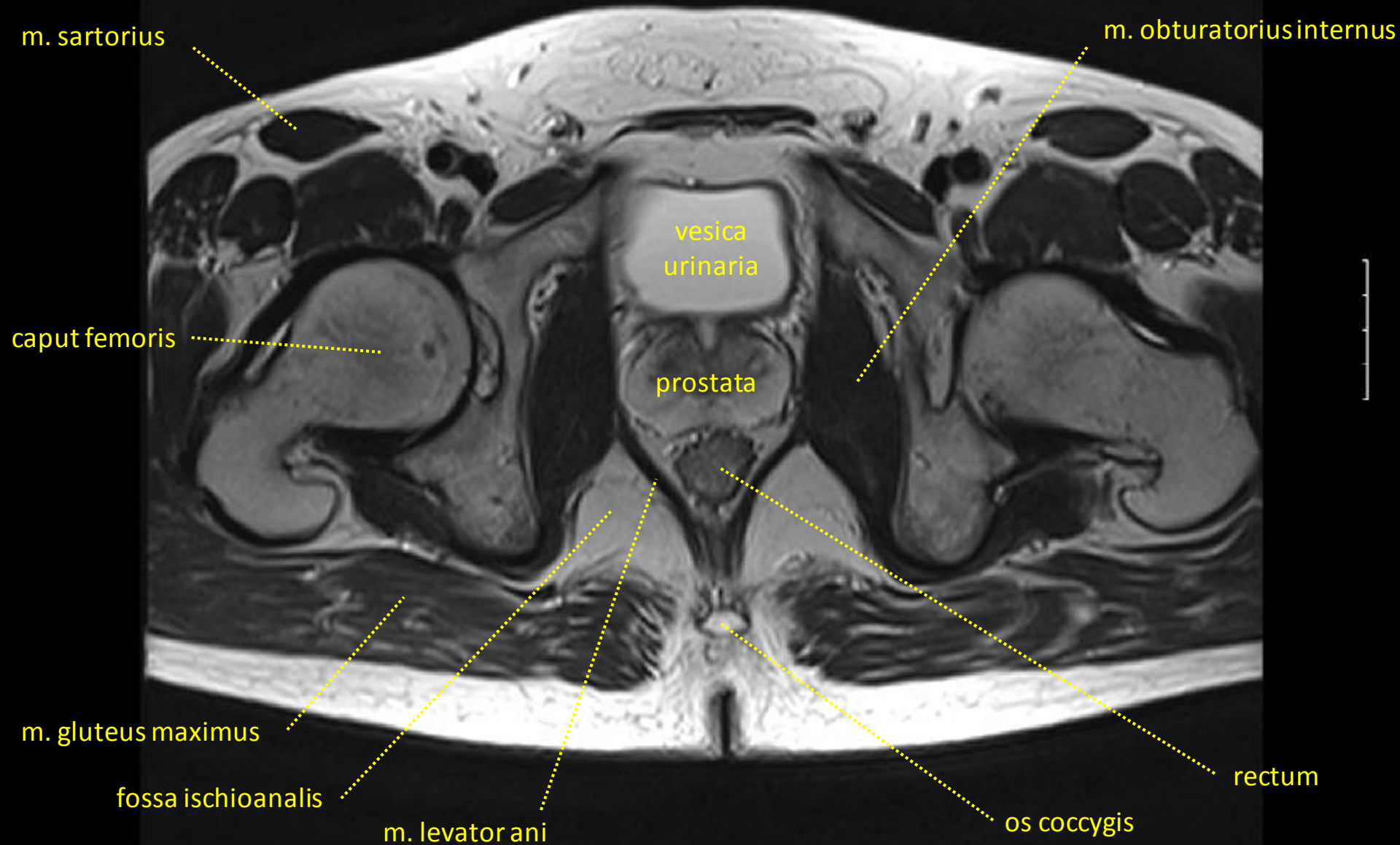
# Ultrazvukové vyšetření močového měchýře

## *Ultrasound examination of the urinary bladder*



# MR břicha / MRI of the abdomen

## *transverzální řez / transverse section*



# CT pánve / CT of the pelvis

## transverzální řez / transverse section

m. rectus abdominis



R

m. iliacus

m. psoas major

ovarium dx.

articulatio sacroiliaca

P



10 cm

ovarium sin.

a. iliaca externa

v. iliaca externa

rectum

R

F

L

P



# CT pánve / CT of the pelvis

## transverzální řez / transverse section

lig. teres uteri

m. iliopsoas

R

uterus

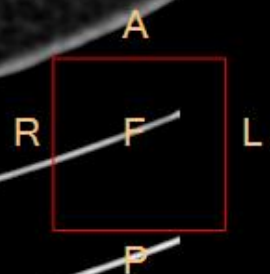
rectum

excavatio rectouterina

a. iliaca externa  
v. iliaca externa

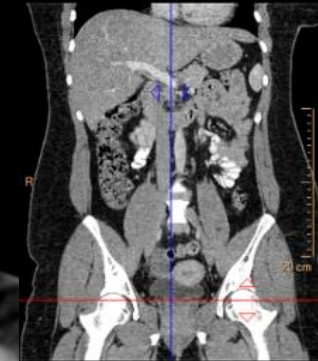


10 cm

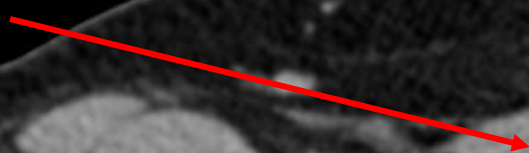


# CT pánve / CT of the pelvis

## transverzální řez / transverse section



m. rectus abdominis

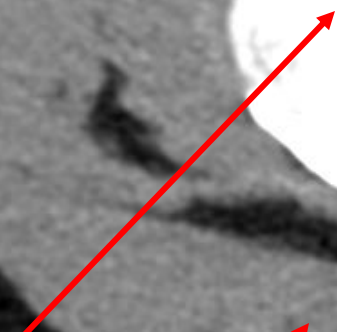


vesica urinaria

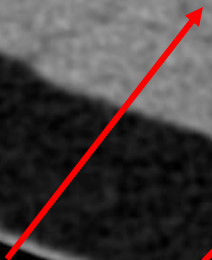


R

caput femoris

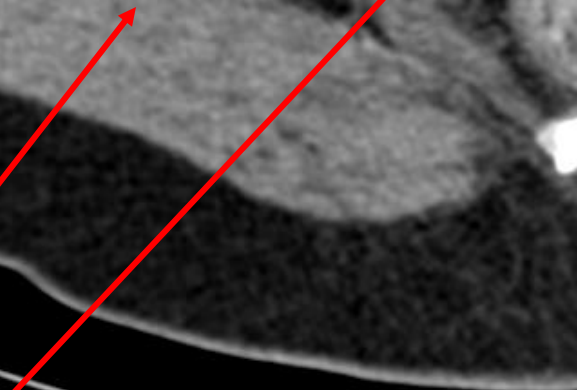


m. gluteus maximus



10 cm

vagina



rectum

