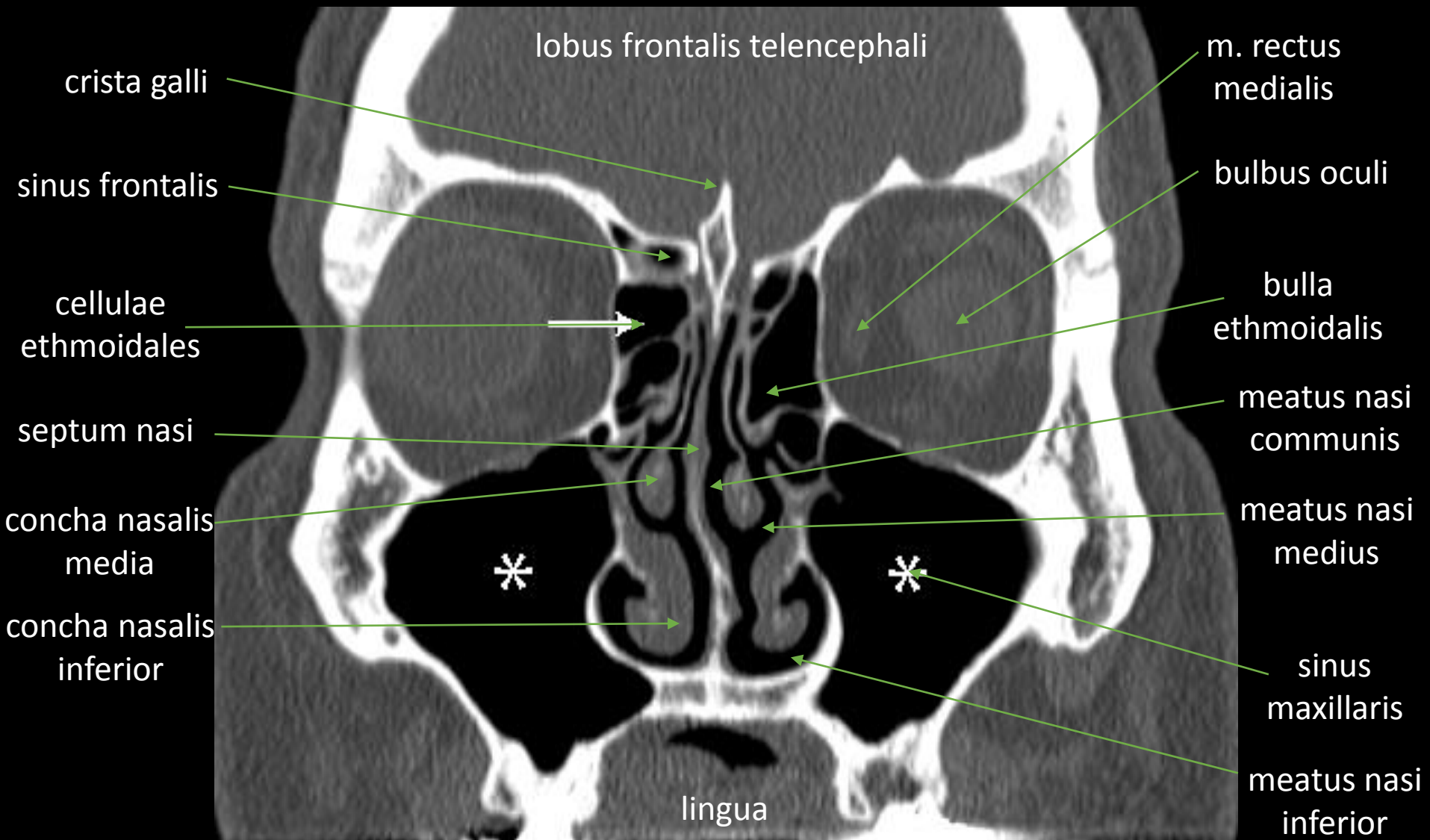


Dýchací soustava a  
mezihrudí

Respiratory system  
and mediastinum

# CT hlavy / CT of the head

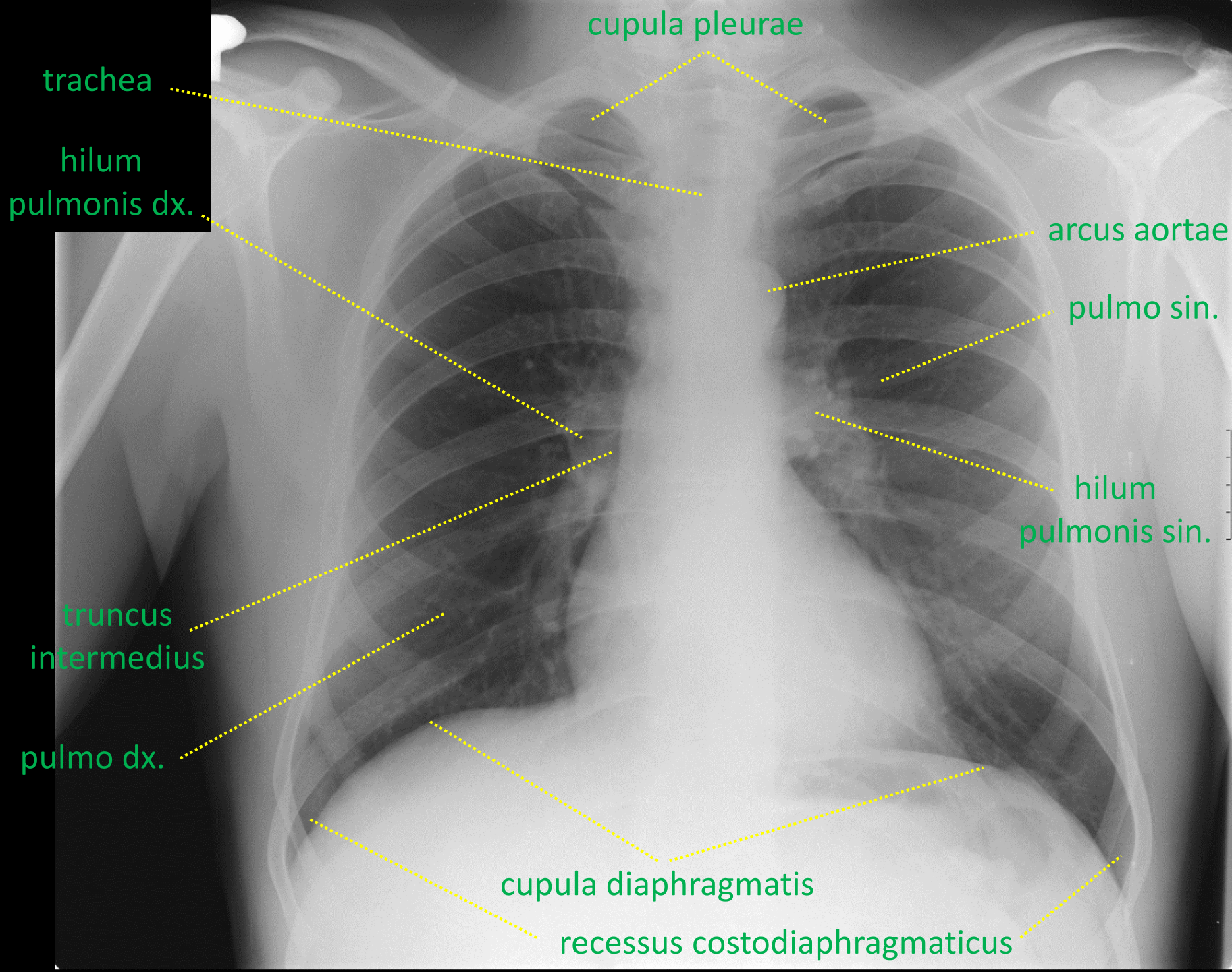
## frontální řez / frontal section



# MR hlavy / MRI of the head

## frontální řez / frontal section





cupula pleurae

trachea

hilum  
pulmonis dx.

arcus aortae

pulmo sin.

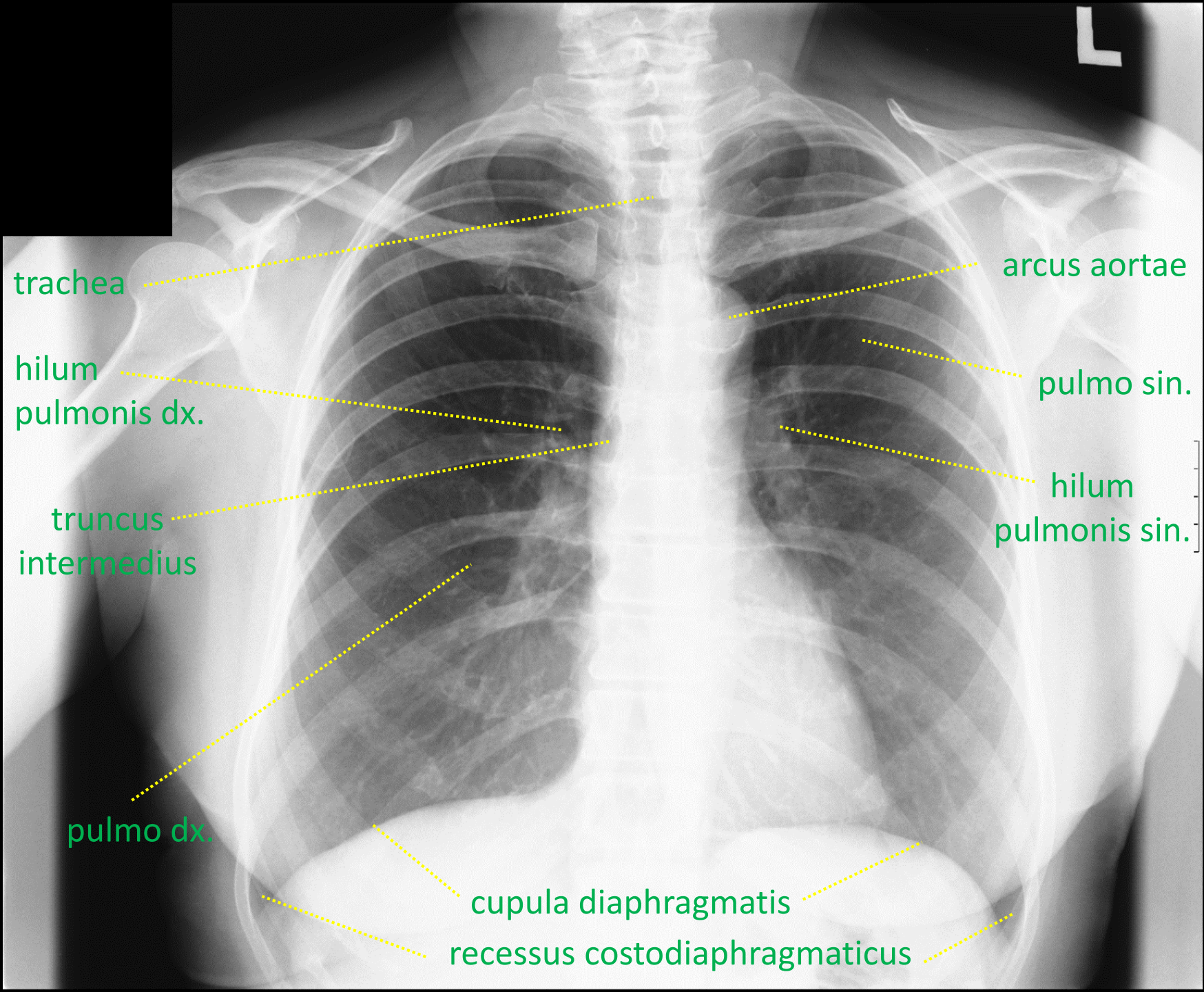
hilum  
pulmonis sin.

truncus  
intermedius

pulmo dx.

cupula diaphragmatis

recessus costodiaphragmaticus



trachea

hilum  
pulmonis dx.

truncus  
intermedius

pulmo dx.

cupula diaphragmatis

recessus costodiaphragmaticus

arcus aortae

pulmo sin.

hilum  
pulmonis sin.

L  
14:10

trachea

bronchus  
principalis dx.

truncus  
intermedius

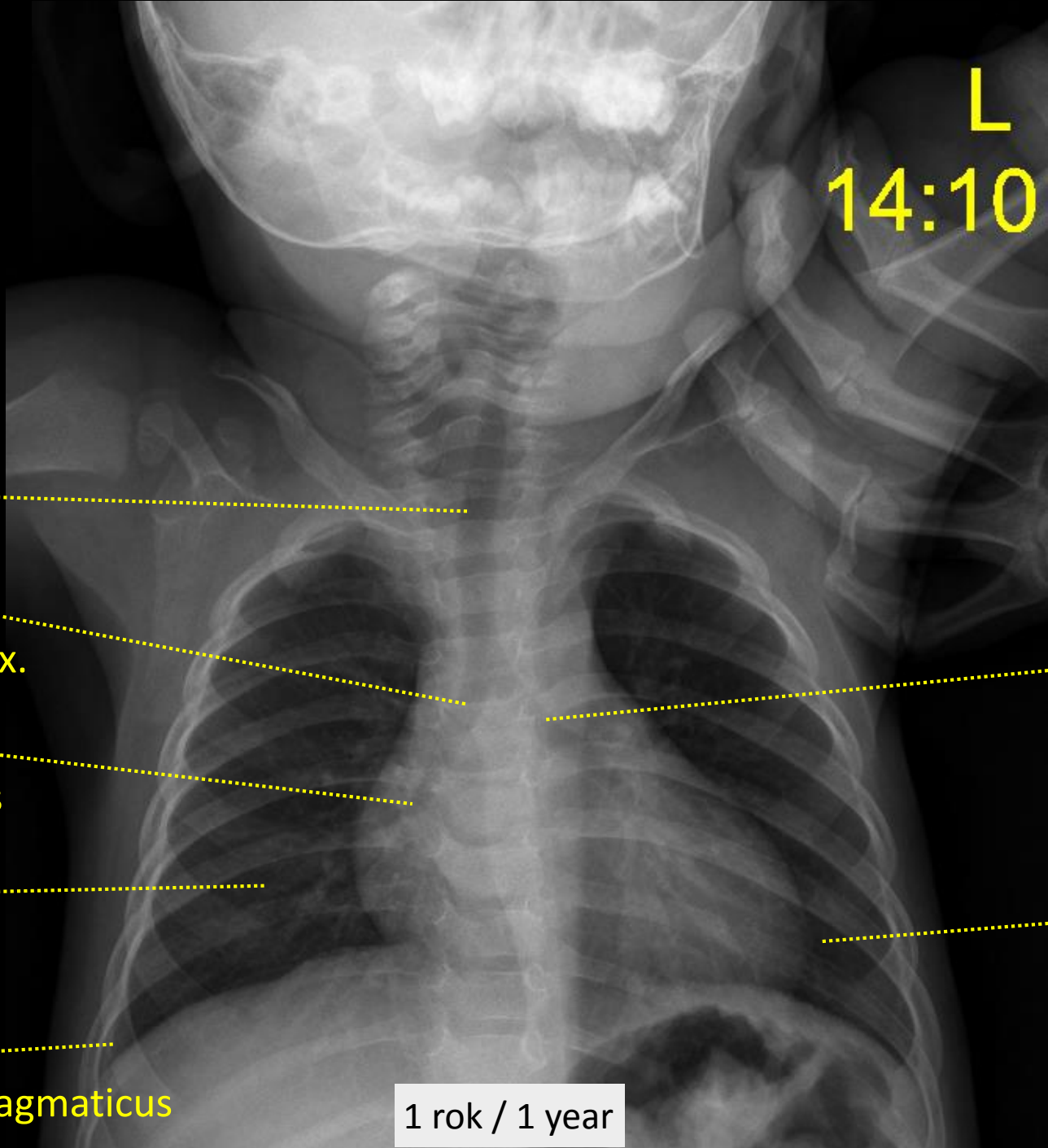
pulmo dx.

recessus  
costodiaphragmaticus

bronchus  
principalis sin.

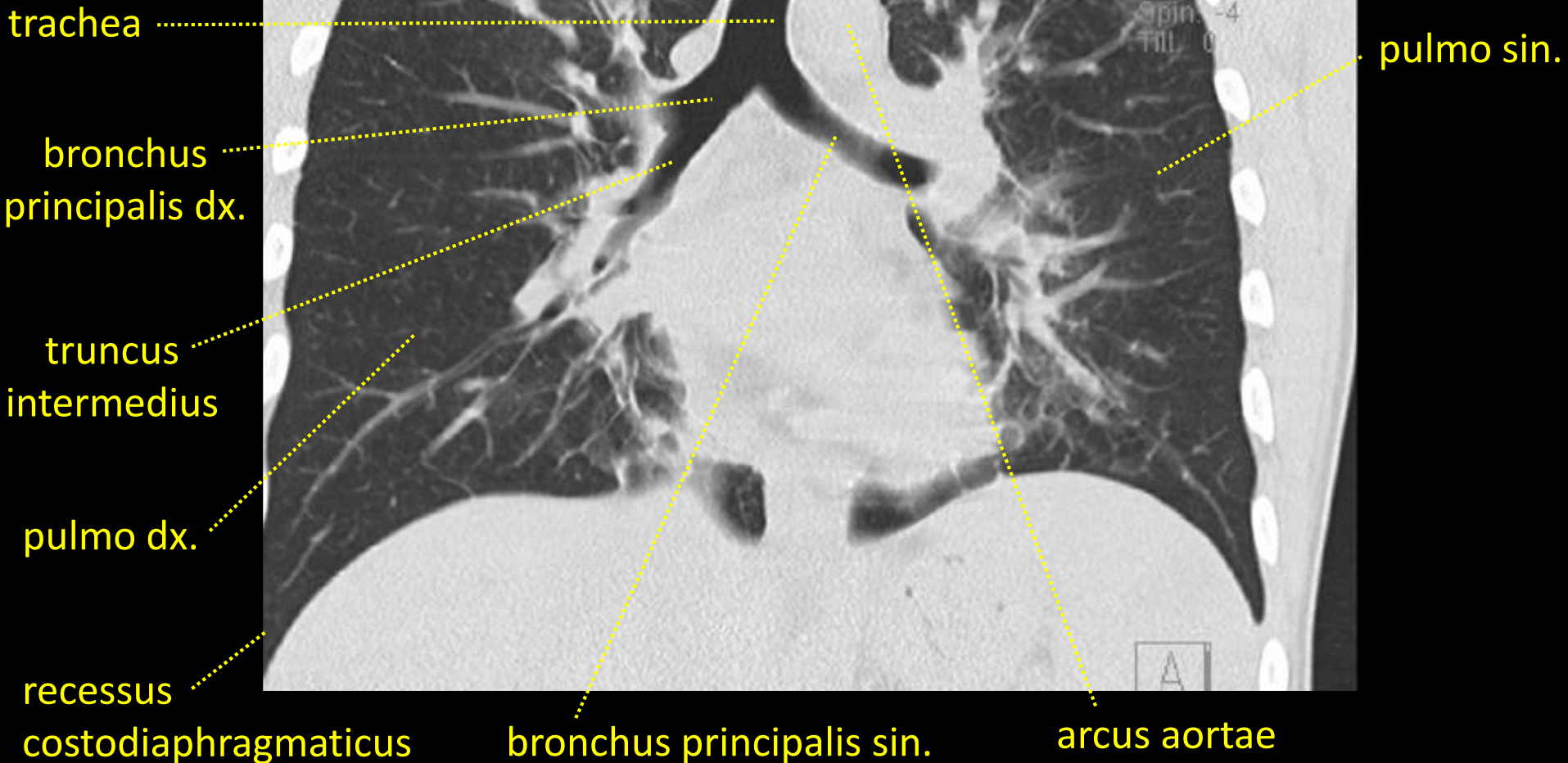
pulmo sin.

1 rok / 1 year



# CT hrudníku / CT of the thorax

*frontální řez*  
*/ frontal*  
*section*

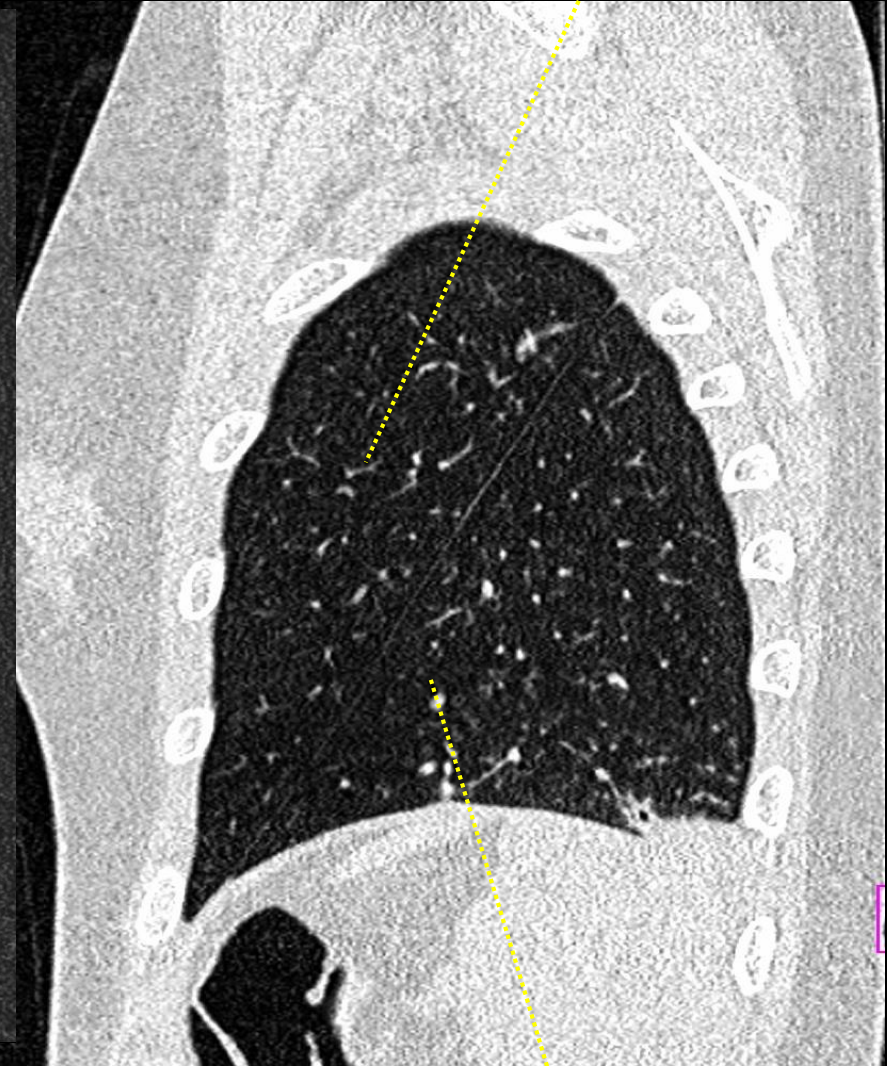
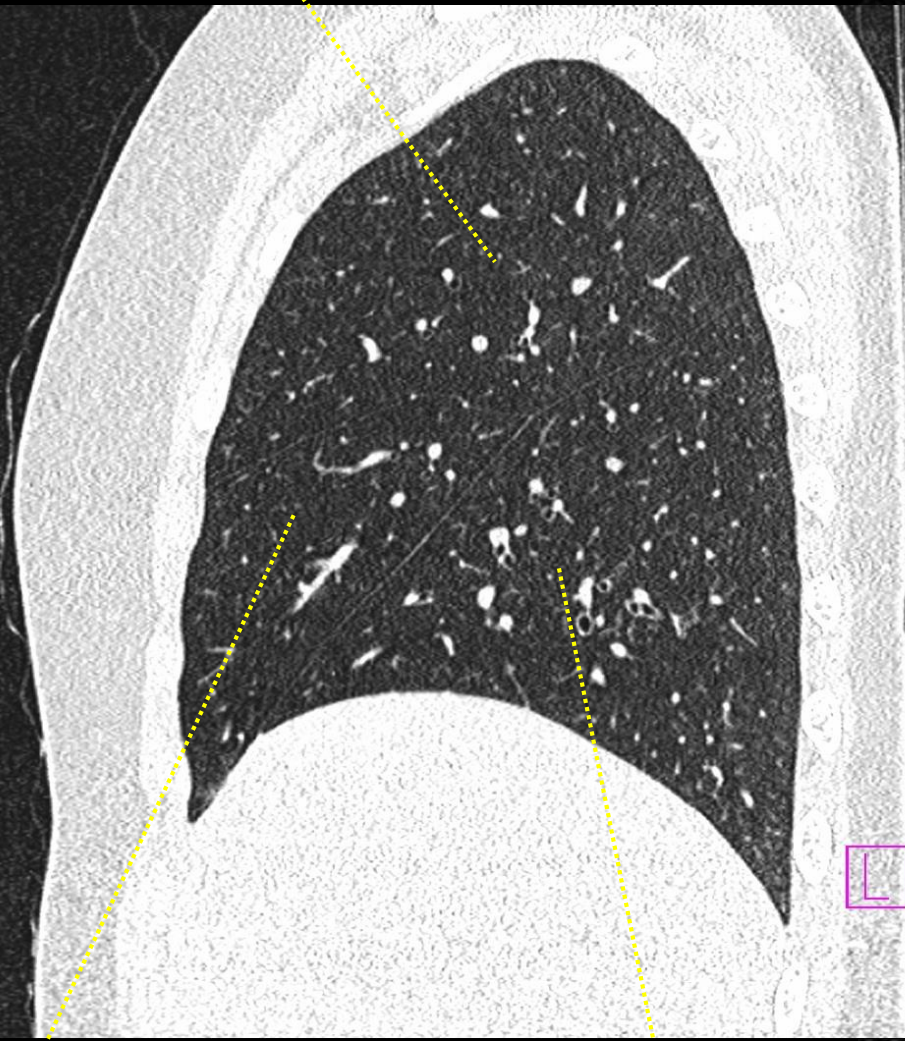


# CT hrudníku / CT of the thorax

## frontální řez / frontal section

lobus sup. dx.

lobus sup. sin.



AcqNo:2

lobus medius dx.

lobus inf. dx.

lobus inf. sin.

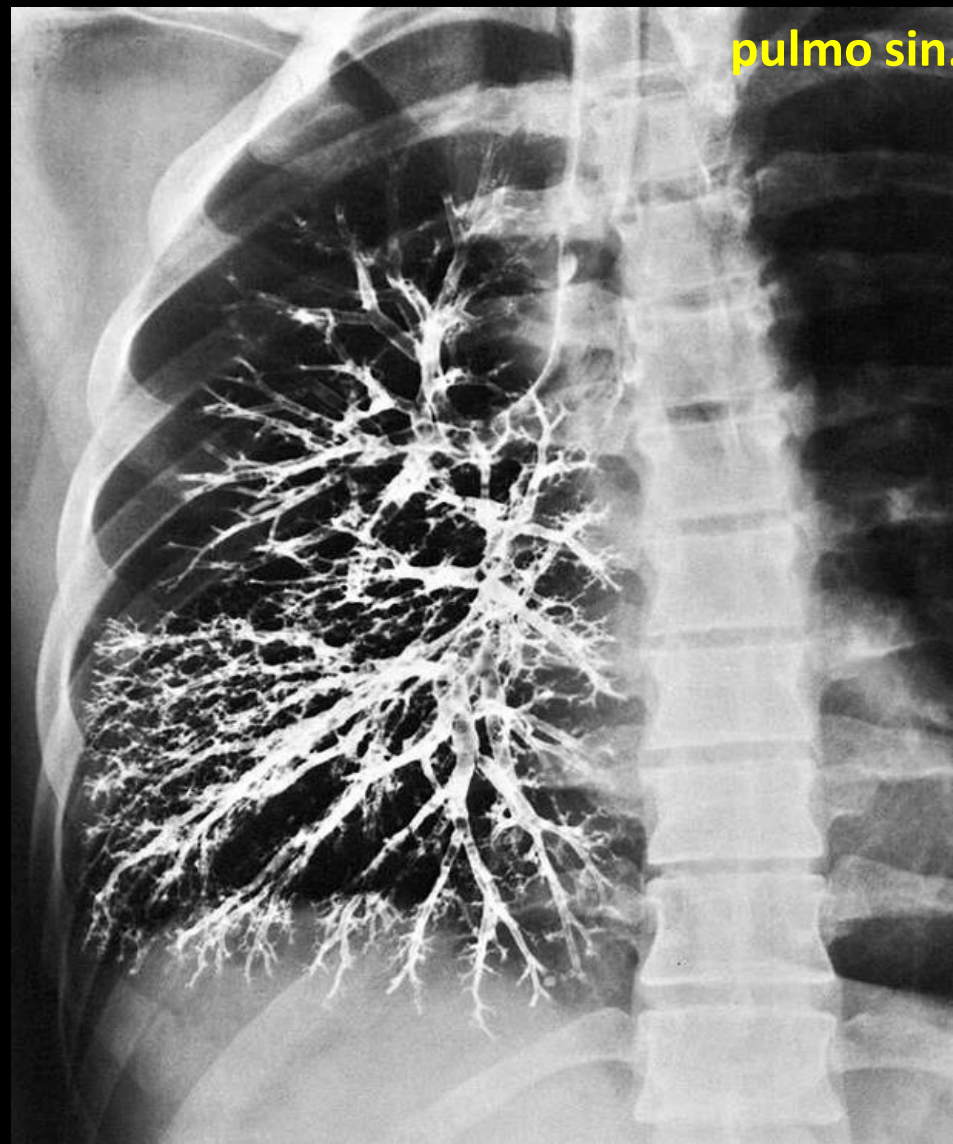
pulmo dexter

pulmo sinister



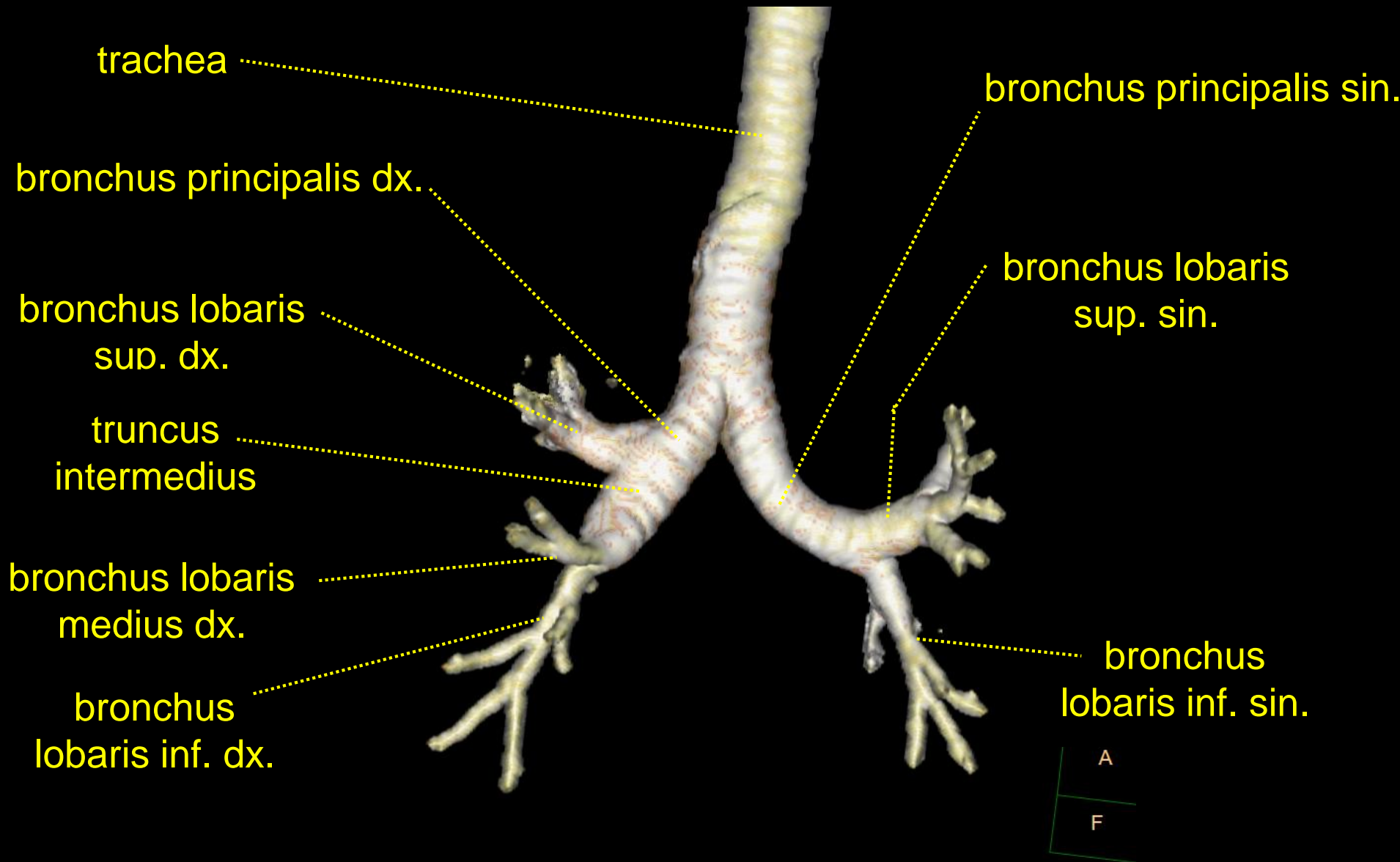
# Bronchografie s kontrastní látkou v průduškovém stromu

## Bronchography with contrast medium in the arbor bronchialis



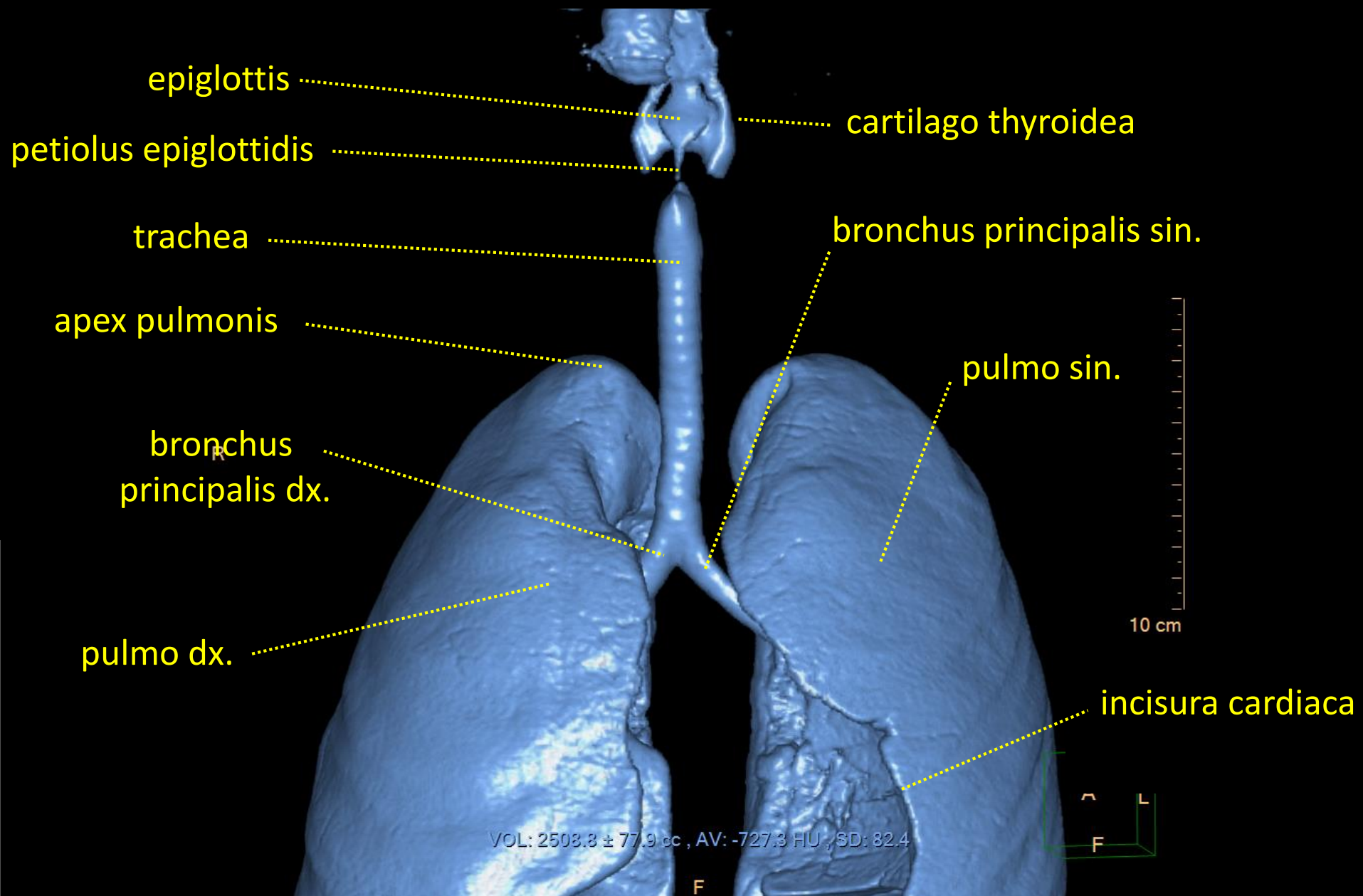
# CT a 3D rekonstrukce průduškového stromu

## CT and 3D reconstruction of the arbor bronchialis



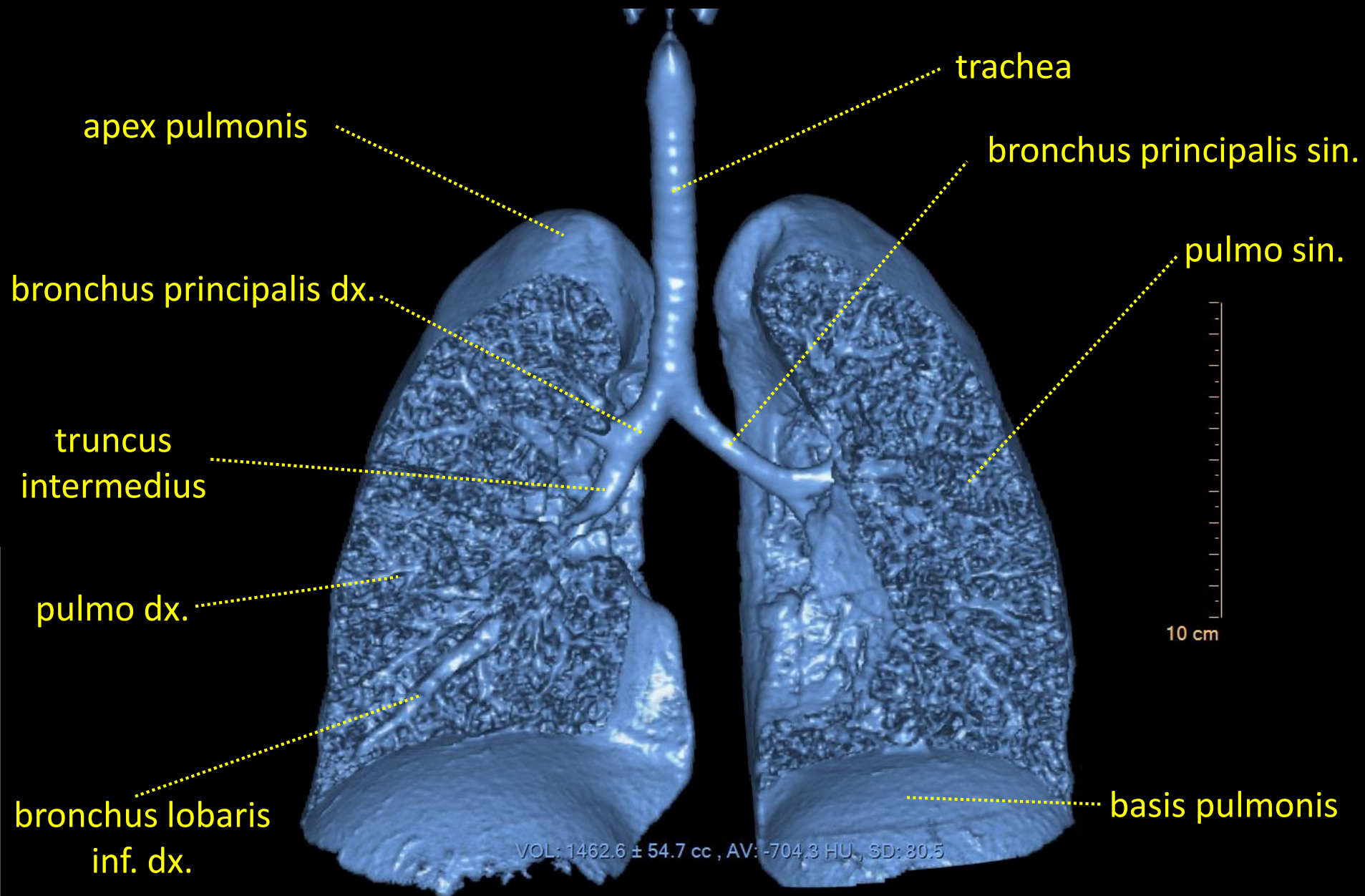
# CT a 3D rekonstrukce průduškového stromu

## CT and 3D reconstruction of the arbor bronchialis



# CT a 3D rekonstrukce průduškového stromu

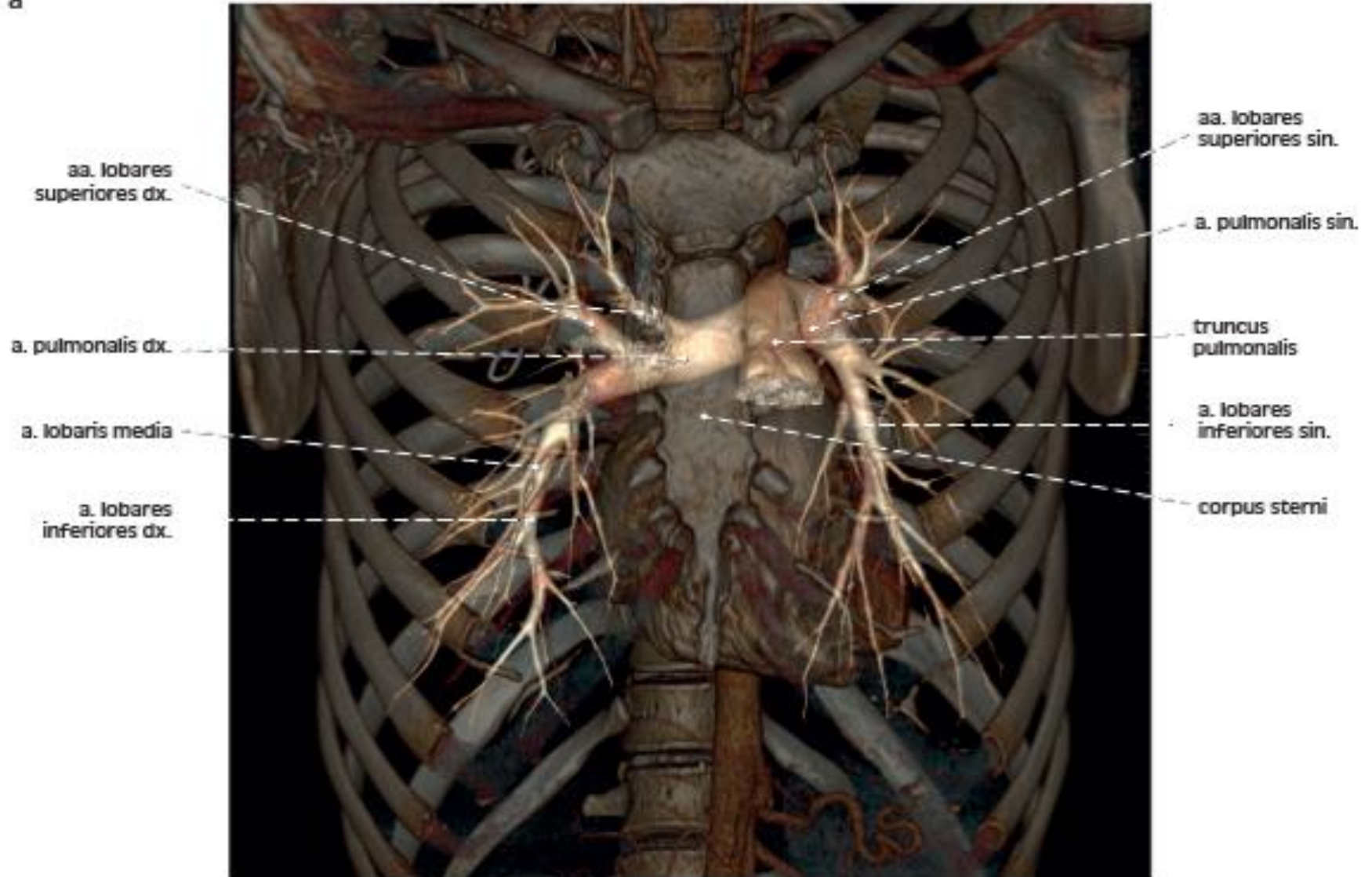
## CT and 3D reconstruction of the arbor bronchialis



# CT a 3D rekonstrukce průduškového stromu

## CT and 3D reconstruction of the arbor bronchialis

a



**CT hrudníku, břicha a  
pánve s kontrastní látkou  
ve střevech  
frontální řez**

**CT of the thorax, abdomen  
and pelvis with contrast  
fluid in the intestine  
frontal section**

pulmo dx.

pulmo sin.

ventriculus dx.

ventriculus sin.

hepar

gaster

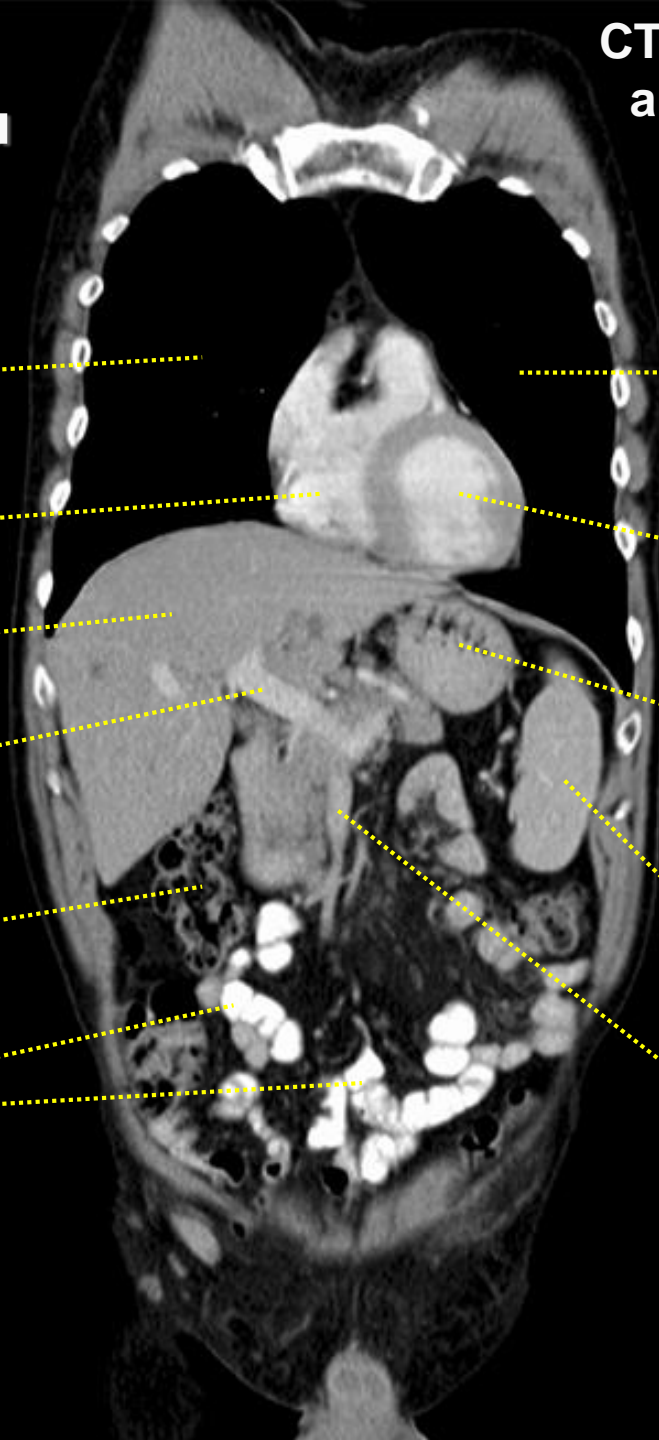
v. portae hepatis

splen

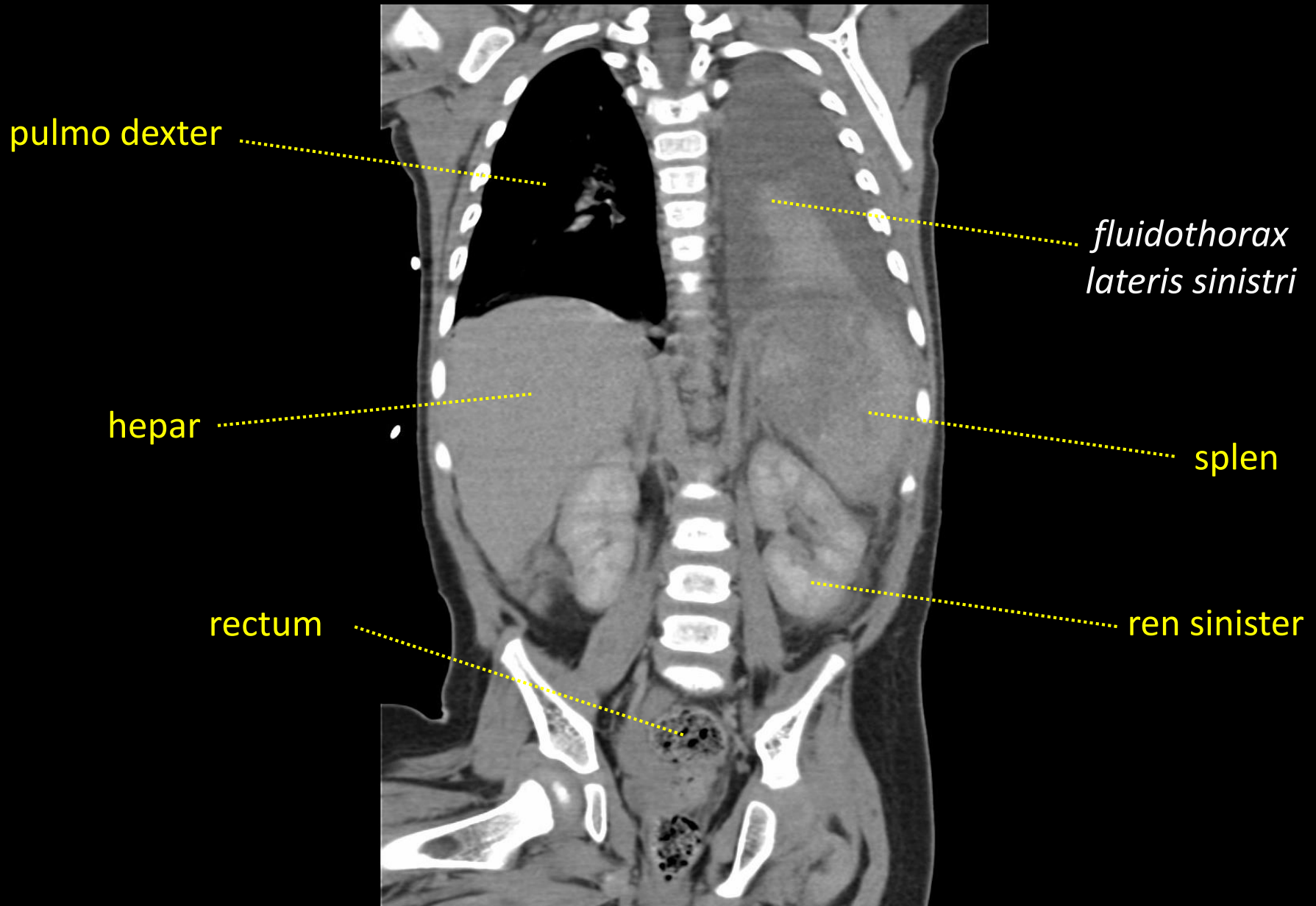
colon ascendens

v. mesenterica inf.

intestinum tenue

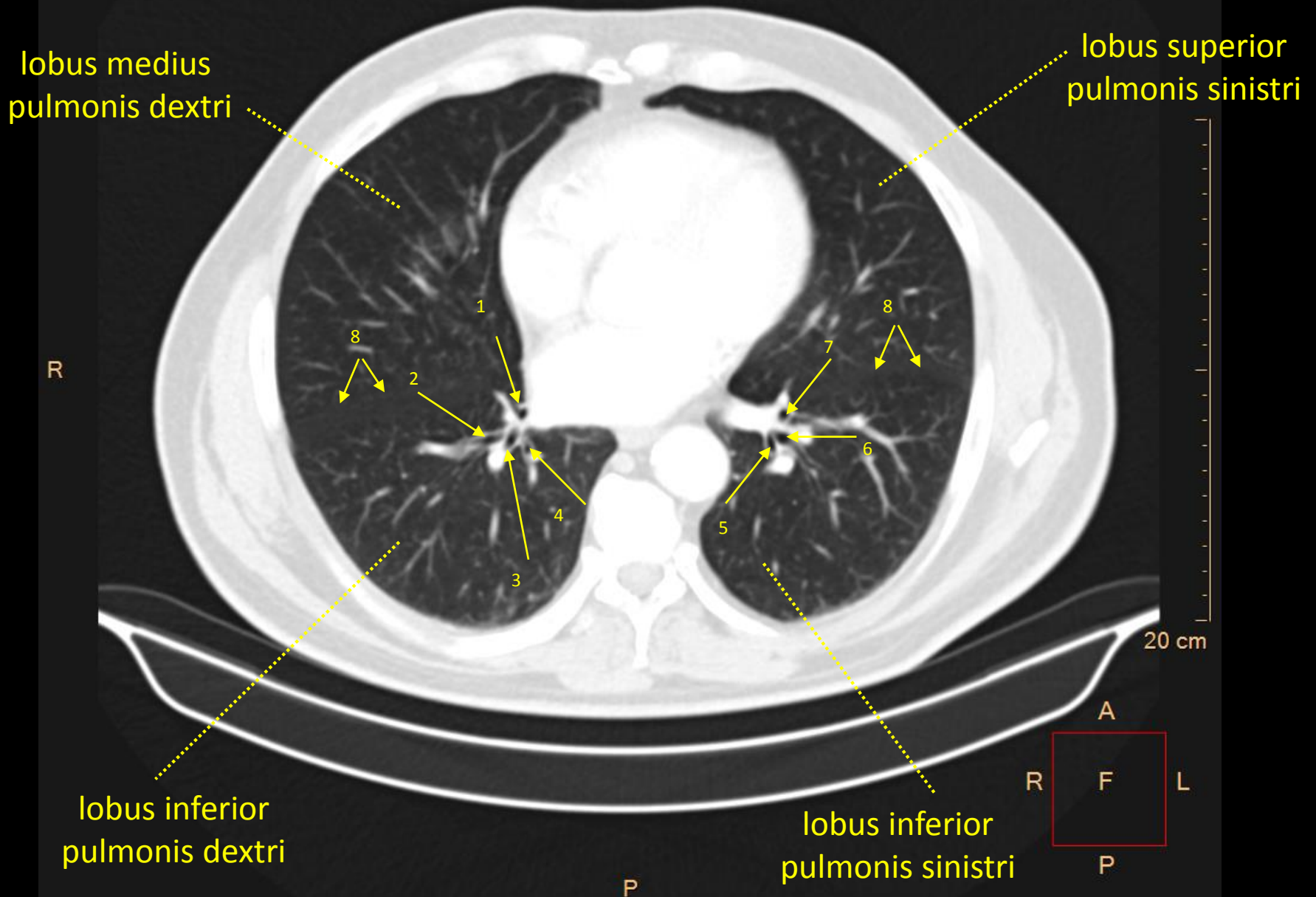


**CT hrudníku, břicha a pánve**  
**CT of the thorax, abdomen and pelvis**  
*frontální řez / frontal section*



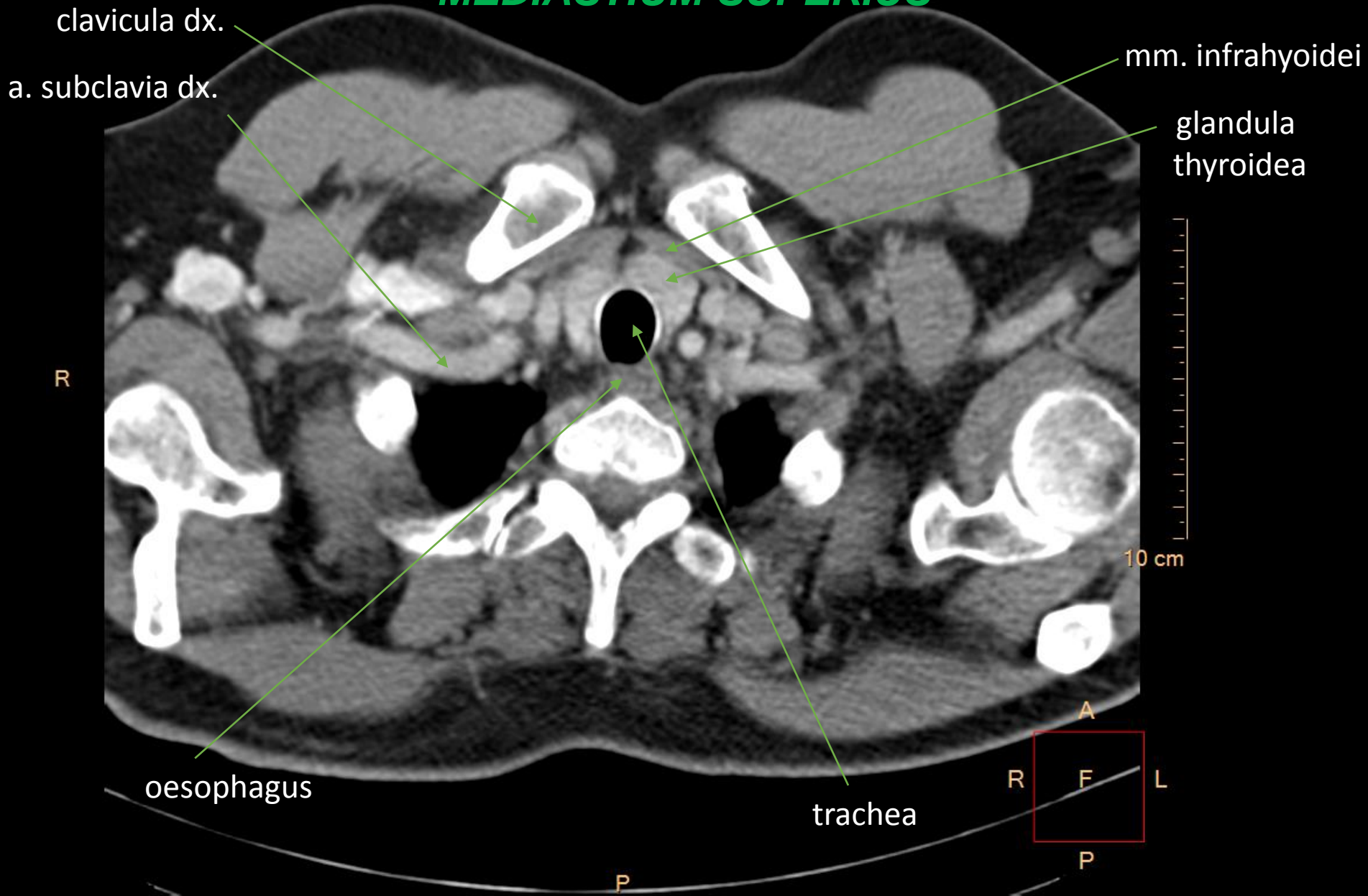
# CT hrudníku / CT of the thorax

## transverzální řez / transverse section (cross-section)

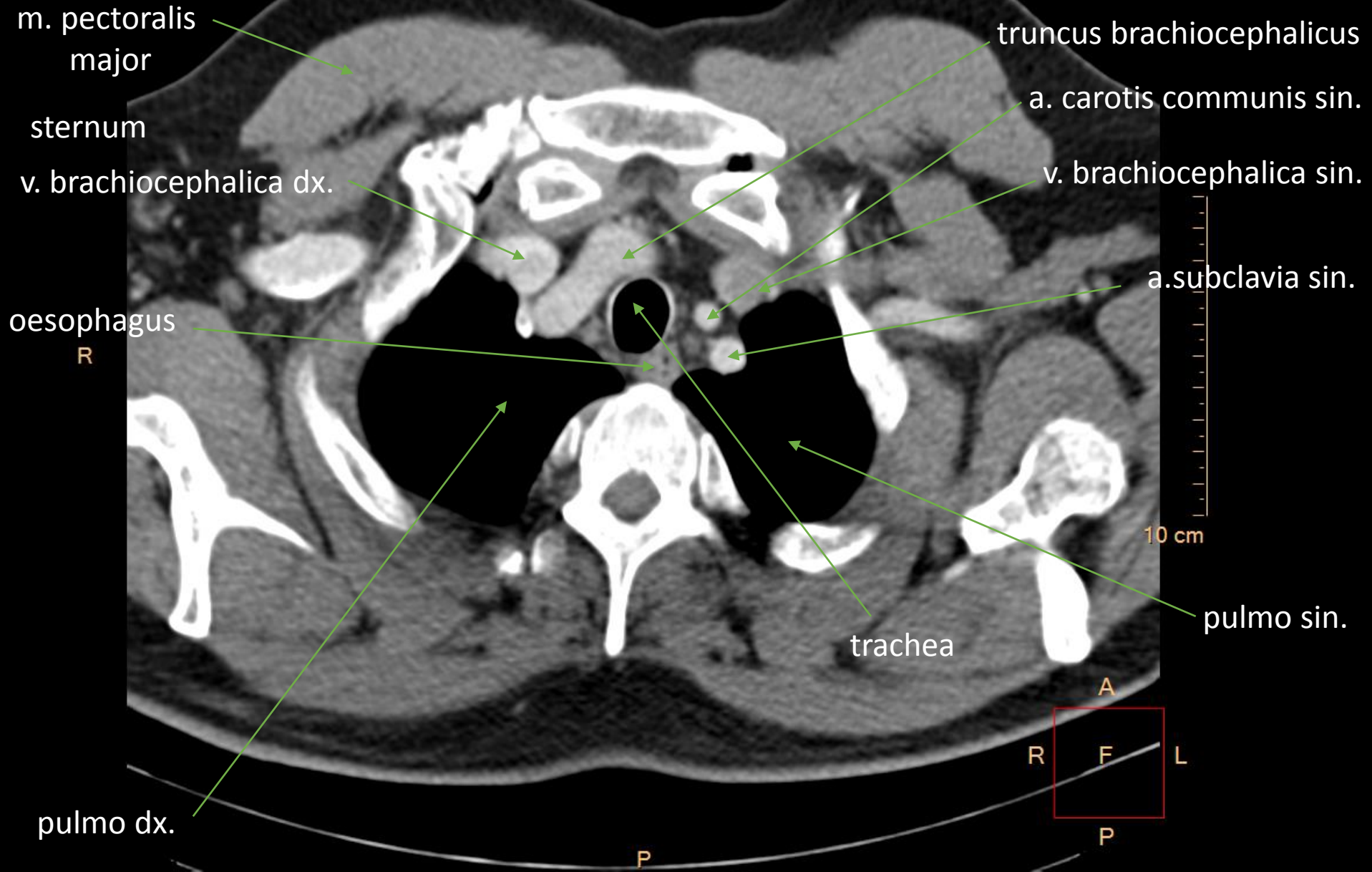




**CT hrudníku / CT of the thorax**  
**transverzální řez / transverse section (cross-section)**  
**MEDIASTIUM SUPERIUS**



**CT hrudníku / CT of the thorax**  
**transverzální řez / transverse section (cross-section)**  
**MEDIASTIUM SUPERIUS**



**CT hrudníku / CT of the thorax**  
**transverzální řez / transverse section (cross-section)**  
**MEDIASTIUM SUPERIUS**

truncus brachiocephalicus

v. brachiocephalica dx.

n.l. paratracheales

R

trachea

pulmo dx.

oesophagus

v. brachiocephalica sin.

a. carotis communis sin.

a. subclavia sin.

10 cm

pulmo sin.

A

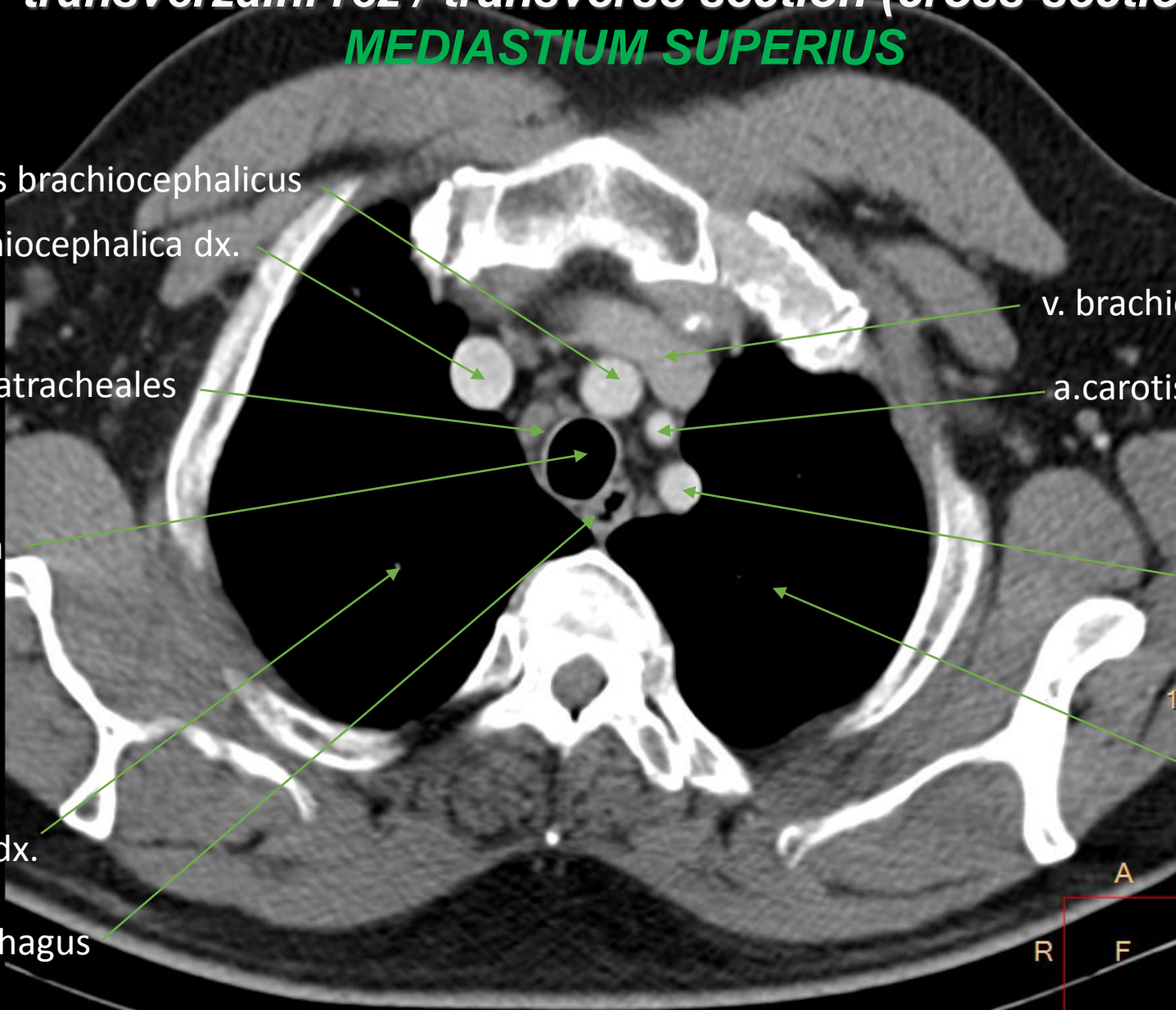
R

F

L

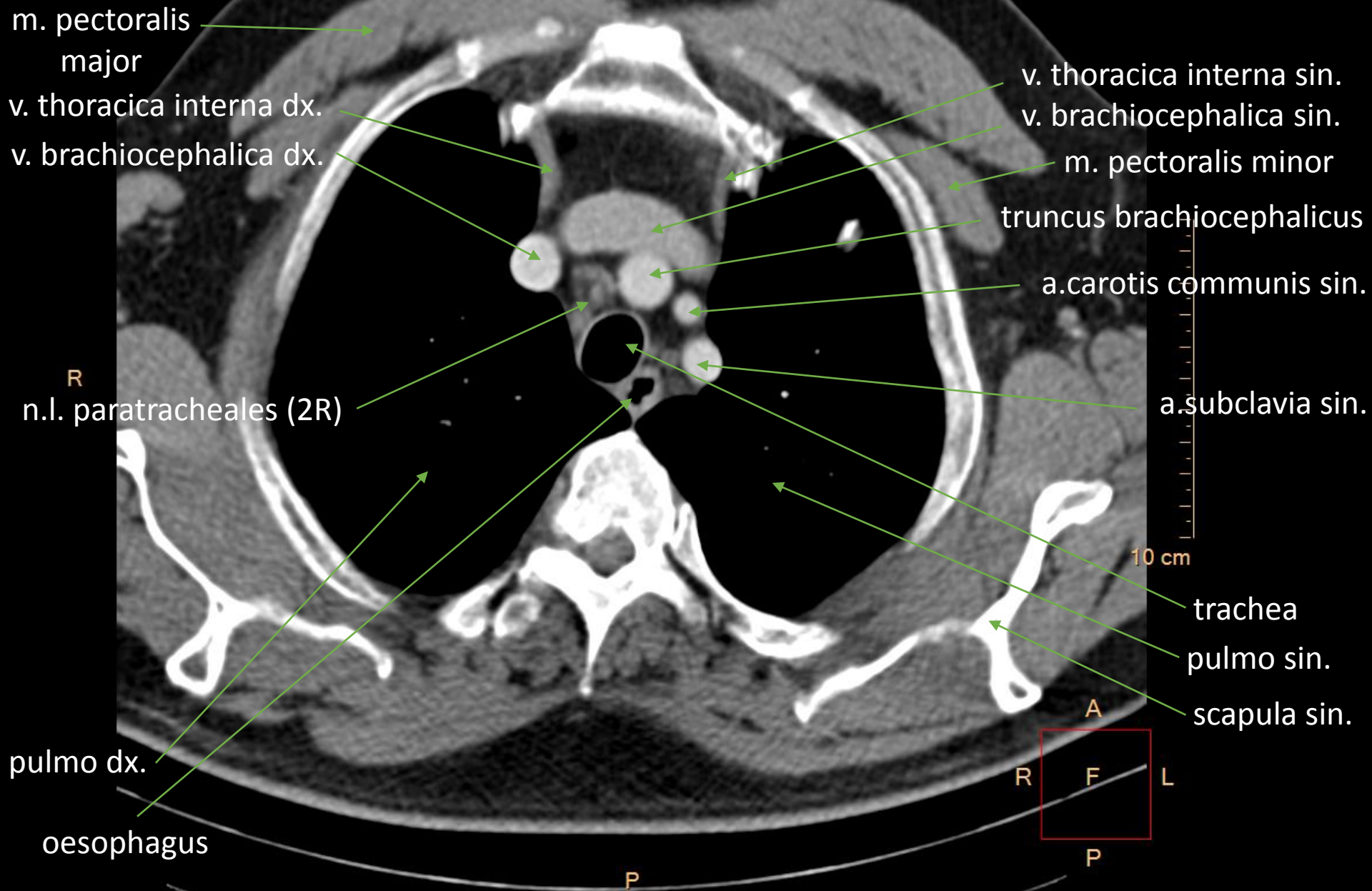
P

P



**CT hrudníku / CT of the thorax**  
**transverzální řez / transverse section (cross-section)**

**MEDIASTIUM SUPERIUS**



CT hrudníku / CT of the thorax  
transverzální řez / transverse section (cross-section)

**MEDIASTIUM SUPERIUS**



CT hrudníku / transverzální řez  
**MEDIASTIUM SUPERIUS**

CT of the thorax  
transverse section (cross-section)  
**MEDIASTIUM SUPERIUS**

v. cava superior

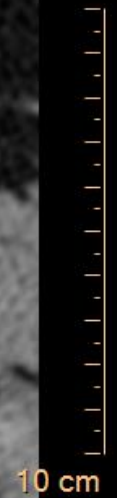
arcus aortae

trachea

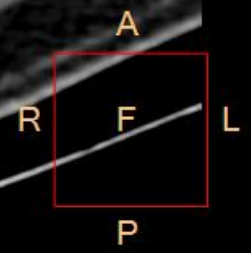
n.l. tracheobronchiales(4R)

R

v. azygos



oesophagus



P

P

CT hrudníku / transverzální řez  
**MEDIASTIUM SUPERIUS**

CT of the thorax  
transverse section (cross-section)  
**MEDIASTIUM SUPERIUS**

v. cava superior

aorta ascendens

carina  
tracheae

truncus pulmonalis

R

oesophagus

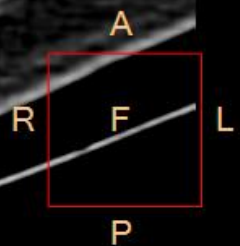
v. azygos

10 cm

pulmo sin.

aorta  
thoracica

pulmo dx.



P

P

CT hrudníku / transverzální řez  
**MEDIASTIUM INFERIUS**

CT of the thorax  
transverse section (cross-section)  
**MEDIASTIUM INFERIUS**

auricula cordis sin.

v. cava superior

a. pulmonalis dx.

R

vena azygos

pulmo dx.

oesophagus

P

aorta thoracica

aorta ascendens

truncus pulmonalis

a. pulmonalis sin.

10 cm

pulmo sin.

bronchus principalis sin.

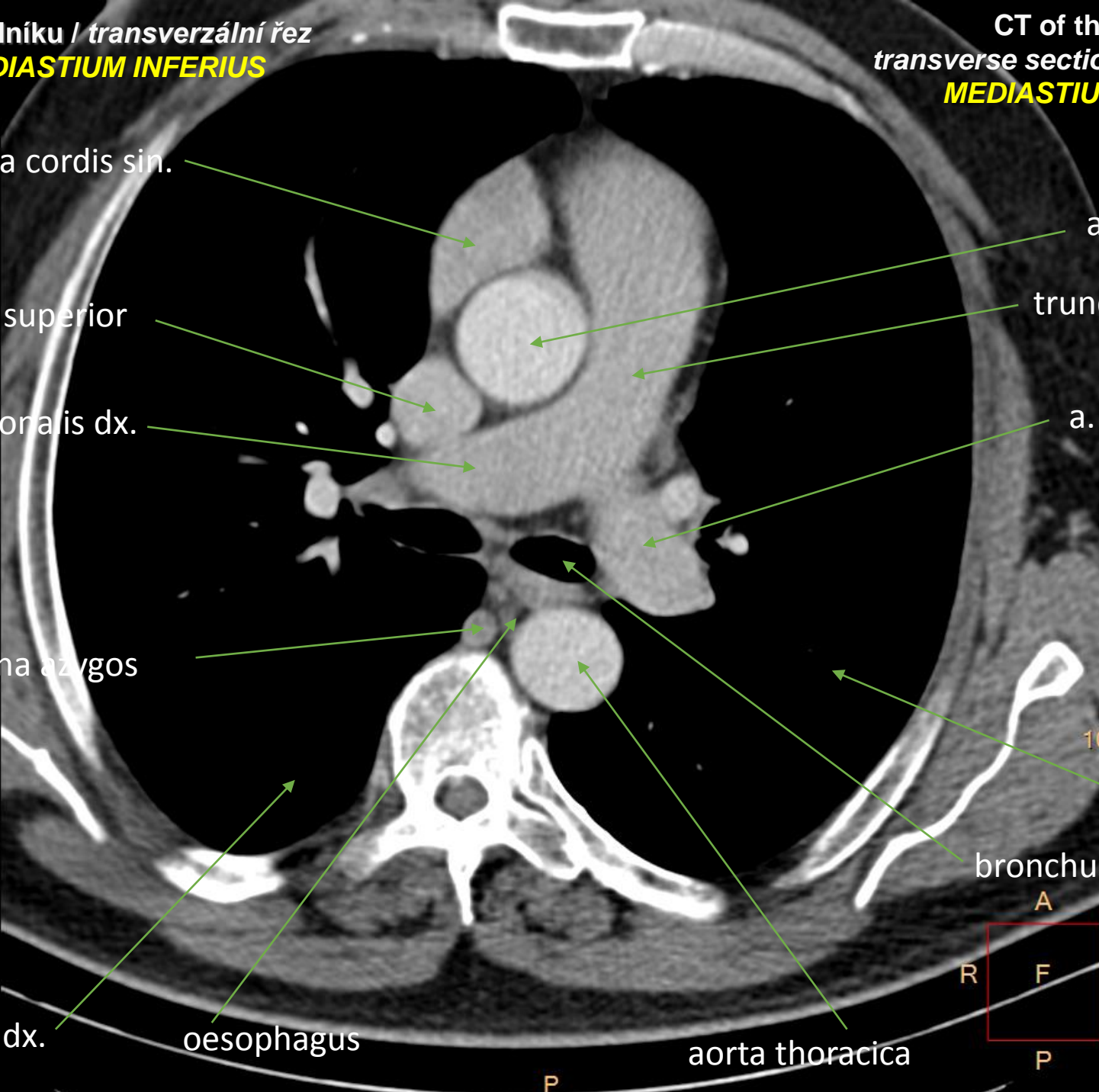
A

R

F

L

P





CT hrudníku / transverzální řez  
**MEDIASTIUM INFERIUS**

CT of the thorax  
transverse section (cross-section)  
**MEDIASTIUM INFERIUS**

atrium dx.

ventriculus sin.

a. pulmonalis dx.

valva aortae

oesophagus

v. pulmonalis superior sin.

R

v. azygos

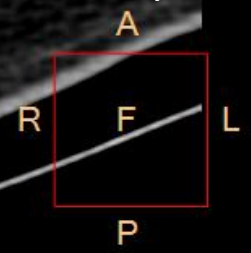
10 cm

pulmo sin.

bronchus principalis I. sin.

pulmo dx.

aorta thoracica



P

P

CT hrudníku / transverzální řez  
**MEDIASTIUM INFERIUS**

CT of the thorax  
transverse section (cross-section)  
**MEDIASTIUM INFERIUS**

atrium dx.

v. pulmonalis inferior dx.

a. lobaris inferior dx.

R

oesophagus

v. azygos

pulmo dx.

ventriculus dx.

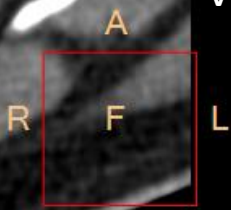
ventriculus sin.

atrium sin.

10 cm

pulmo sin.

v. pulmonalis inferior sin.



aorta thoracica

P

P

CT hrudníku / transverzální řez  
**MEDIASTIUM INFERIUS**

CT of the thorax  
transverse section (cross-section)  
**MEDIASTIUM INFERIUS**

atrium dx.

ventriculus dx.

ventriculus sin.

atrium sin.

oesophagus

R

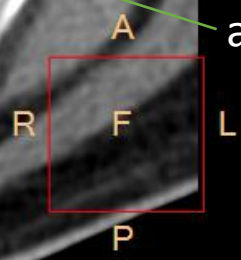
v. azygos

10 cm

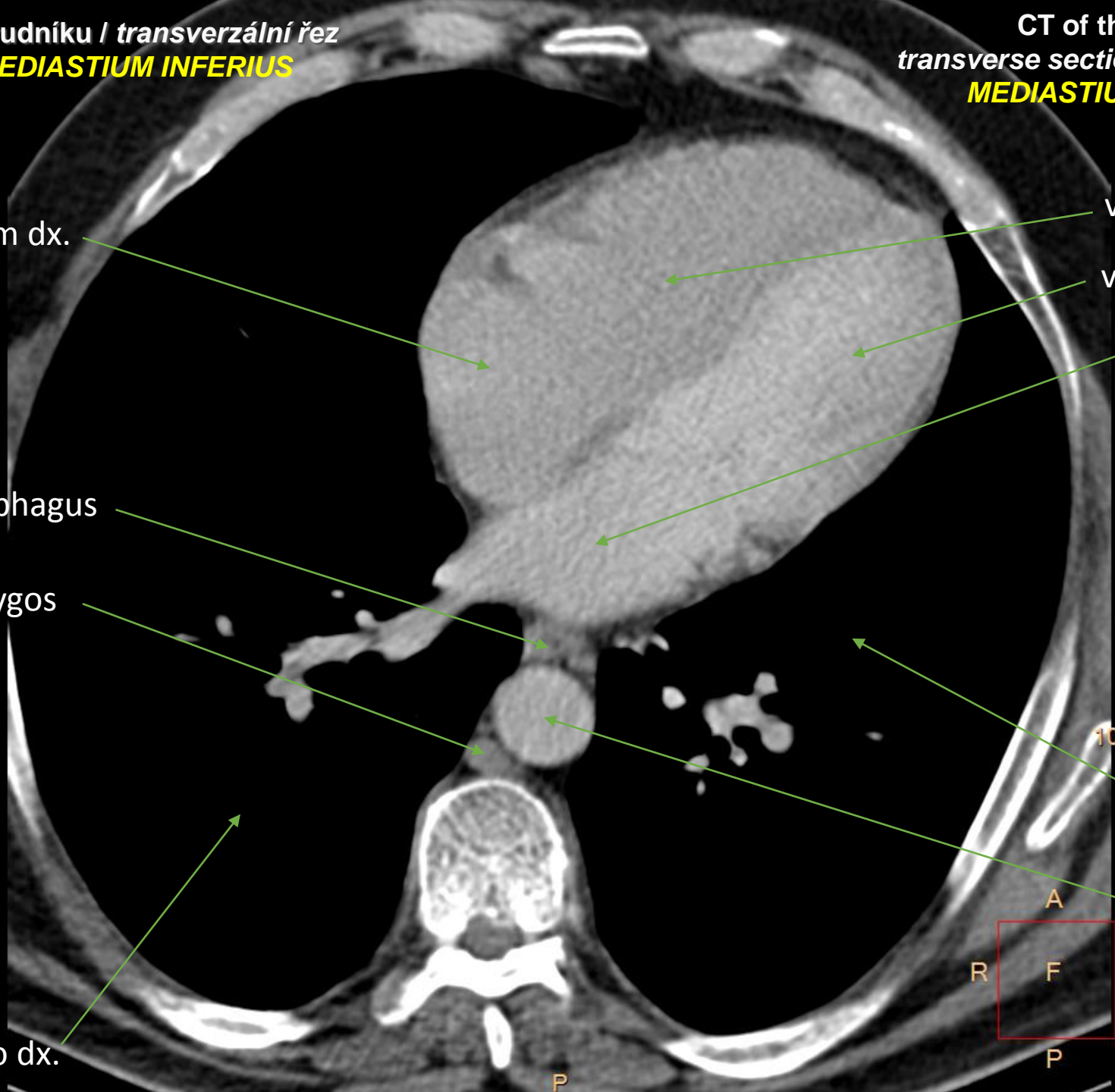
pulmo sin.

aorta thoracica

pulmo dx.



P



CT hrudníku / transverzální řez  
**MEDIASTIUM INFERIUS**

CT of the thorax  
transverse section (cross-section)  
**MEDIASTIUM INFERIUS**

atrium dx.

ventriculus dx.

ventriculus sin.

pulmo sin.

v. cava inferior

oesophagus

R

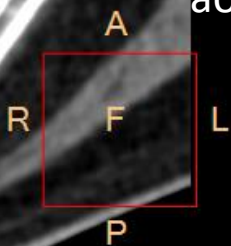
vena azygos

10 cm

atrium sin.

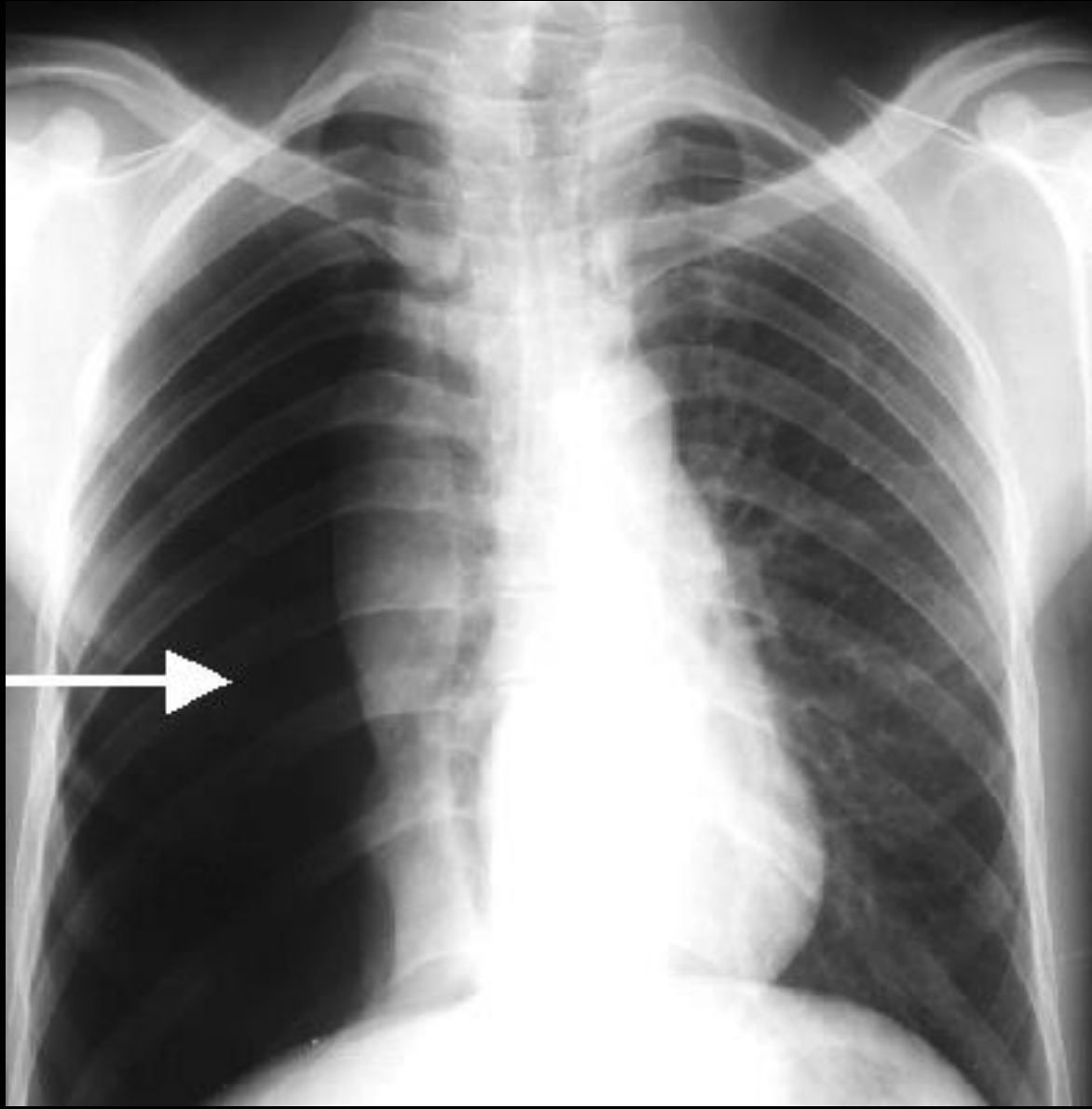
aorta thoracica

pulmo dx.



P

# Pneumothorax I. dx.



Pneumothorax l. dx.

